

Figure S1. The Kaplan-Meier curves of the core subpathway and pathway signatures in The Cancer Genome Atlas subsets.

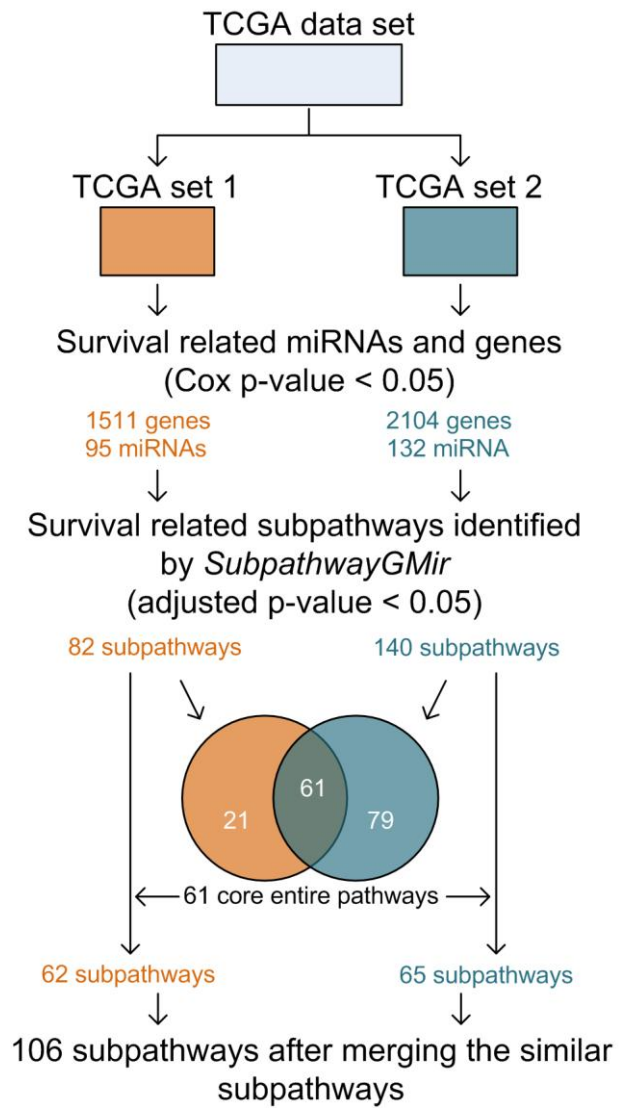


Figure S2. The workflow for identifying the 106 core subpathways.

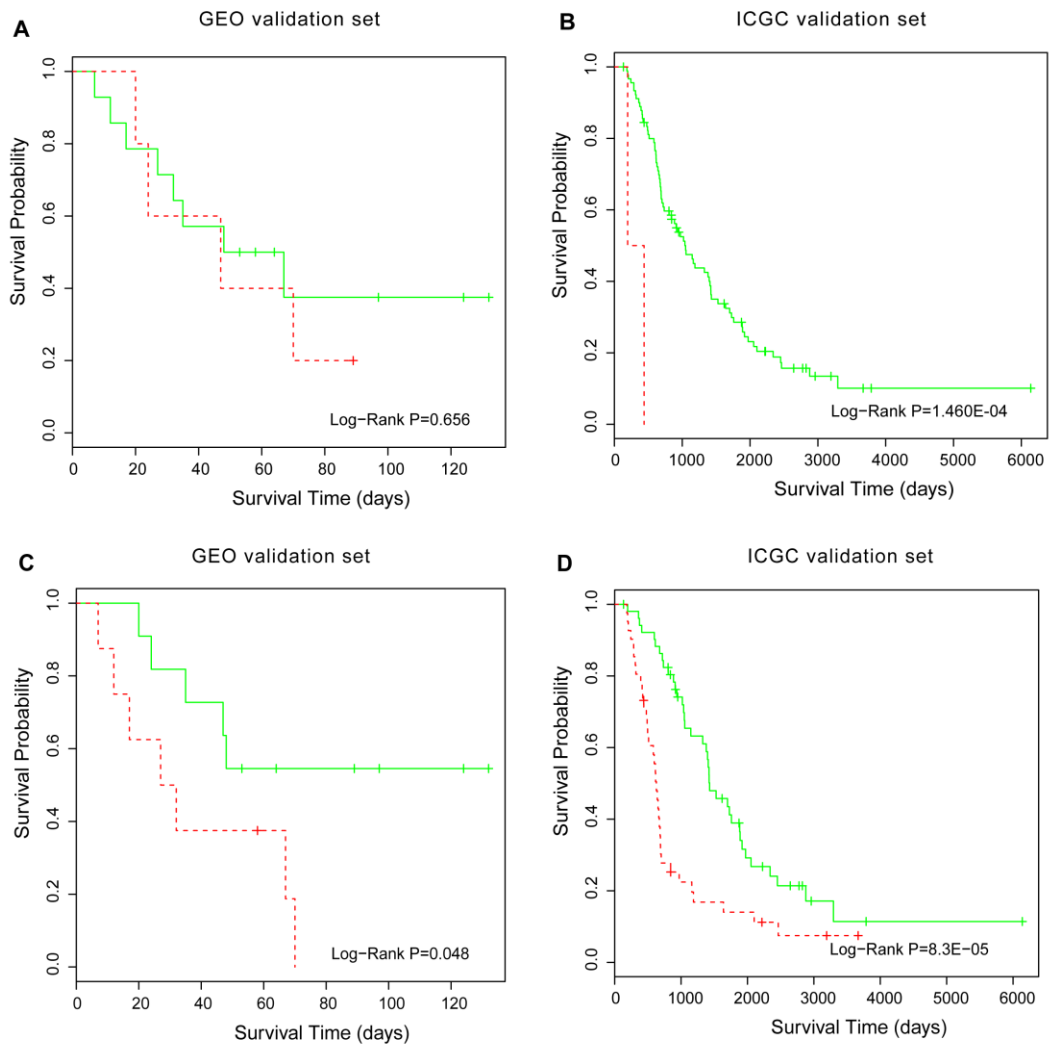


Figure S3. The Kaplan-Meier curves of core subpathways in the two validation data sets.

Characteristic	Training set (N=185)	Testing set (N=185)
Age (Mean±SD)	60.6±11.0	58.6±11.6
Grade		
G1 (%)	1 (0.5%)	0 (0%)
G2 (%)	16 (8.7%)	26 (14.1%)
G3 (%)	162 (87.6%)	154 (83.2%)
GX (%)	6 (3.2%)	5 (2.7%)
Stage		
I (%)	0 (0%)	1 (0.6%)
II (%)	8 (4.3%)	13 (7.0%)
III (%)	145 (78.4%)	143 (77.3%)
IV (%)	29 (15.7%)	28 (15.1%)
Unknown (%)	3 (1.6%)	0 (0%)
Patient survival		
Alive (%)	77 (41.6%)	91 (49.2%)
Deceased (%)	108 (58.4%)	94 (50.8%)
Survival days (Mean±SD)	1039.6±847.0	986.8±817.8

Table S1. The clinical features of patients in the two The Cancer Genome Atlas subsets.