

1 **Subclinical Thyroid Dysfunction and the Risk of Cognitive Decline: a Meta-Analysis** 2 **of Prospective Cohort Studies**

3 **Authors:** Carole Rieben, MD^a; Daniel Segna, MD^a; Bruno R. da Costa, PhD^b; Tinh-Hai Collet, MD^{c,d};
4 Loyal Chaker, MD^e; Carole E. Aubert, MD^a, Christine Baumgartner, MD^a; Osvaldo P. Almeida, MD,
5 PhD^f; Eef Hogervorst, PhD^g; Stella Trompet, PhD^h; Kamal Masaki, MDⁱ; Simon P. Mooijaart, MD, PhD^j;
6 Jacobijn Gussekloo, MD, PhD^k; Robin P. Peeters, MD, PhD^o; Douglas C. Bauer, MD^l; Drahomir Aujesky,
7 MD, MSc^a; Nicolas Rodondi, MD, MAS^{a,b}.

8 **Affiliations:** ^a Department of General Internal Medicine, Inselspital, Bern University Hospital, University
9 of Bern, Switzerland; ^b Institute of Primary Health Care (BIHAM), Faculty of Medicine, University of
10 Bern, Bern, Switzerland; ^c Service of Endocrinology, Diabetes and Metabolism, University Hospital of
11 Lausanne, Lausanne, Switzerland; ^d University of Cambridge Metabolic Research Laboratories, Wellcome
12 Trust-MRC Institute of Metabolic Science, Addenbrooke's Hospital, Cambridge, UK; ^e Rotterdam Thyroid
13 Center, Department of Epidemiology, Rotterdam, The Netherlands; ^f School of Psychiatry and Clinical
14 Neurosciences, University of Western Australia, Perth, Australia; ^g School of Sport, Exercise and Health
15 Sciences, Loughborough University, Leicestershire, UK; ^h Department of Cardiology, Leiden University
16 Medical Center, Leiden, The Netherlands; ⁱ Kuakini Medical Center and the Department of Geriatric Med-
17 icine, John A. Burns School of Medicine, University of Hawaii, Honolulu, Hawaii, USA; ^j Department of
18 Gerontology and Geriatrics, LUMC, Leiden and Institute for Evidence-based Medicine in Old Age (IE-
19 MO), Leiden, The Netherlands; ^k Department of Public Health and Primary Care, Leiden University Med-
20 ical Center, Leiden, The Netherlands; ^l Department of Medicine, University of California, San Francisco,
21 USA.

22 **Corresponding author and address for reprint requests:** Nicolas Rodondi, MD, MAS, Department of
23 General Internal Medicine, Inselspital, Bern University Hospital, University of Bern, 3010 Bern, Switzer-
24 land; e-mail: nicolas.rodondi@insel.ch; Phone +41 31 632 41 63; Fax +41 31 632 88 85

25 **Abbreviated title:** Subclinical Thyroid Dysfunction and Cognitive Decline

26 **Key terms:** Subclinical thyroid dysfunction, subclinical hyperthyroidism, subclinical hypothyroidism,
27 cognitive decline, dementia

28 **Word Count: Text:** 3462

Commented [RN1]: To adapt at the end

29 **Abstract:** 294293

Commented [CB2]: To adapt in the end

30 **Table Count:** 2; **Figure Count:** 2

31 **Supplemental Table Count:** 2; **Supplemental Figures Count:** 2

32 **Reference Count:** 58

Commented [RC3]: Uptdate at the end

33 **Financial Support:** Swiss National Science Foundation (SNSF 320030-150025).

34 **Disclosure summary:** The authors have nothing to disclose.

35 **Registration:** The protocol of this meta-analysis has been published in the PROSPERO (PROSPERO
36 Record: CRD42015019819) register.

37 **ABSTRACT**

38 **Context:** While both overt hyper- and hypothyroidism are known to lead to cognitive impairment, data on
39 the association between subclinical thyroid dysfunction and cognitive function are conflicting.

40 **Objective:** To determine the risk of dementia and cognitive decline associated with subclinical thyroid
41 dysfunction among prospective cohort studies.

42 **Data Sources:** Search in MEDLINE and EMBASE (inception until November 2014) and reference lists of
43 key articles without language restrictions.

44 **Study Selection:** Two physicians identified prospective cohorts that assessed thyroid function at baseline
45 and cognitive outcomes (dementia; Mini-Mental State Examination, MMSE).

46 **Data Extraction:** Data were extracted by one reviewer following standardized protocols and verified by a
47 second reviewer. Both reviewers independently assessed study quality. The primary outcomes were de-
48 mentia and decline in cognitive function measured by MMSE. We calculated risk ratios and 95% confi-
49 dence intervals using random-effects models.

50 **Data Synthesis:** Eleven prospective cohorts followed 16,805 participants during a median follow-up of
51 44.4 months. Five studies analyzed the risk of dementia in subclinical hyperthyroidism (n=6410), six in
52 subclinical hypothyroidism (n=7401). Five studies analyzed MMSE decline in subclinical hyperthyroid-
53 ism (n=7895), seven in subclinical hypothyroidism (n=8960). In random-effects models, the pooled ad-
54 justed RR for dementia in subclinical hyperthyroidism was 1.67 (95% confidence interval [CI] 1.04-2.69)
55 and 1.14 (95%CI 0.84-1.55) in subclinical hypothyroidism versus euthyroidism, both without evidence of
56 significant heterogeneity ($I^2=0.0\%$). Sensitivity analyses pooling only studies with formal outcome adjudi-
57 cation or population-based studies yielded similar results. The pooled mean MMSE decline from baseline
58 to follow-up (mean 32 months) did not significantly differ between subclinical hyper- or hypothyroidism
59 versus euthyroidism.

60 **Conclusions:** Subclinical hyperthyroidism **might** be associated with **an elevated** risk for dementia, while
61 subclinical hypothyroidism is not, and both conditions are not associated with faster decline in MMSE
62 over time. Available data are limited, and additional large, high-quality studies are needed.

63

Formatted: Highlight

64 CONTEXT

65 The prevalence of subclinical hypothyroidism (SHypo) reaches up to 10% in the elderly population, while
66 subclinical hyperthyroidism (SHyper) has a prevalence of 2.4%, and 4.3% in the population aged ≥ 80
67 years.^{1,2} SHypo is biochemically defined as elevated serum thyroid-stimulating hormone (TSH, thyrotro-
68 pin) levels, but free thyroxin (fT₄) levels within laboratory reference ranges³, SHyper is defined as de-
69 creased serum TSH concentrations and normal fT₄ and fT₃ levels. The subclinical forms of thyroid dys-
70 function have previously been associated with increased risk of heart failure and coronary heart disease.⁴⁻⁶
71 Furthermore, SHyper may negatively influence bone and mineral metabolism.⁷

72 While both overt hyper- and hypothyroidism are known to lead to cognitive impairment and clinical
73 guidelines recommend screening for thyroid dysfunction among patients with cognitive disorders⁸, data on
74 the association between subclinical thyroid dysfunction (SCTD) and cognitive function remained conflict-
75 ing. In the general population, the prevalence of mild cognitive impairment is 3-22%, with a higher preva-
76 lence among adults >70 years (14-18%).⁹⁻¹¹ Mild cognitive impairment, a cognitive decline not normal for
77 age but with essentially preserved functional activities, is believed to be the earliest clinical symptom of
78 cognitive disorders and may be the stage to intervene with preventive therapies.^{11,12} The progression rate
79 from cognitive impairment to dementia in the general population aged > 65 years is around 6-10% per
80 year.¹¹ SHyper has also been associated with increased risk of dementia,¹³ with one retrospective cohort
81 reporting a hazard ratio of 1.6 (95% confidence interval [CI] 1.2-2.3) for dementia.¹⁴ SHypo might also be
82 associated with alterations in cognitive function,^{13,15,16} with one case-control study reporting a nearly 4-
83 fold increase in the odds ratio of dementia (OR=3.8, 95%CI 1.6-9.1).¹⁷

84 However, data on the association between SCTD and cognitive function are conflicting.¹⁸⁻²⁰

85 Two recent meta-analyses yielded discrepant findings for SHypo, one showing a significant risk of cogni-
86 tive alteration (composite endpoint of reduced Mini-Mental State Examination (MMSE), Wechsler
87 Memory Scale-Revised, total memory quotient and Wechsler Adult Intelligence Scale scores) for SHypo
88 individuals younger than 75 years with an OR of 1.56 (95%CI 1.07-2.27),²¹ whereas the other found no

89 decline in MMSE in SHypo patients aged ≥ 60 years (pooled estimate [ES] 0.03, 95%CI -0.001-0.07).²²
90 As both meta-analyses were limited by pooling heterogeneous study designs (prospective and retrospec-
91 tive data), and did neither examine the risk of dementia nor cognitive function associated with SHyper, we
92 conducted a meta-analysis to determine whether SHyper and SHypo were associated with an increased
93 risk of dementia or decline in cognitive function in prospective cohorts, the gold standard for observation-
94 al data.

95 **METHODS**

96 **Data sources and Searches**

97 To perform this systematic review, we followed a pre-defined protocol registered on PROSPERO (Rec-
98 ord: CRD42015019819). We conducted a systematic literature search in MEDLINE and EMBASE data-
99 bases from inception until November 2014 searching for articles related to SCTD and cognitive decline
100 and dementia. The Medical Subject Headings (Mesh) in Ovid MEDLINE included “thyroid disease”, “hy-
101 pothyroidism”, “hyperthyroidism”, “thyroid hormones”, “thyrotropin”, “subclinical hyperthyroidism”,
102 “subclinical hypothyroidism”, “subclinical dysthyroidism”, “subclinical thyroid”, “cognition”, “demen-
103 tia”, “memory”, “Alzheimer”, “cognitive”, “cohort studies”, “cohort”, “controlled clinical trial”, “epide-
104 miologic methods”, “review”. We applied a cohort filter designed by the British Medical Journal
105 knowledge information specialists²³ but did not use any other filters or restrictions including year limita-
106 tions or language restrictions. A similar strategy with similar terms was used for EMBASE. Additionally,
107 we searched the bibliographies of included articles, as well as key articles in the field, and contacted sev-
108 eral authors for unpublished subgroup data.

109

110 **Study Selection (Figure 1)**

111 Two reviewers (CR, DS) independently screened titles and abstracts of the search results and selected
112 publications. In a second step, the same two reviewers independently evaluated the full-text publications
113 of the retrieved studies according to the following pre-specified eligibility criteria: prospective cohort
114 studies among participants ≥ 18 years, including a SCTD and a euthyroid control group with thyroid func-
115 tion tests at baseline and assessment of cognitive function during follow-up, with published risk estimates
116 or sufficient information to calculate them. We excluded studies examining solely participants with overt
117 thyroid disease. Disagreements were resolved by an independent third author (NR). SHyper was defined
118 as decreased or undetectable TSH and normal fT_4 , and SHypo as elevated TSH and normal fT_4 . Cohort-
119 specific TSH- and fT_4 -cutoff levels were used to determine thyroid status. For dementia definition, we
120 accepted all validated assessments of memory and cognitive function, and did not exclude studies that

121 reported other scales than MMSE. For our analyses, we also collected information on clinical dementia
122 (Supplement table 1). Additionally, we gathered data on MMSE results at baseline and follow-up visits

123

124 **Data Extraction and Quality Assessment**

125 Standardized data extraction forms were used to collect information from the included cohorts concerning
126 patient characteristics, thyroid hormone levels, and scales for tests or criteria used to define memory func-
127 tion, dementia or Alzheimer's disease (AD). Data were extracted by one reviewer (CR) and verified by a
128 second independent reviewer (DS). Discrepancies were solved by a third author (NR). Two reviewers
129 (CR, DS) independently assessed study quality using key indicators of cohort study quality^{24,25}: origin of
130 population (convenience versus population-based, the latter defined as a random sample of the general
131 population), methods of outcome ascertainment and adjudication (considered as adequate if in each poten-
132 tial case performed by an expert panel blinded regarding the thyroid status and following defined outcome
133 criteria), completeness of follow-up, assessment of the proportional hazard assumption and adjustment for
134 confounders.

135

136 **Data Synthesis and Statistical Analysis**

137 We expressed the estimates of the association between SCTD (i.e. SHyper or SHypo) and outcomes as
138 risk ratios (RR) for dementia or as between-group differences in mean changes from baseline for MMSE
139 scores (MD). Only prospective data were analyzed. A RR>1 indicates a higher risk of an event in SCTD
140 compared to euthyroids and a MD>0 indicates higher decline of MMSE in SCTD compared to euthyroids.
141 To account for the different lengths of follow-up time across studies, we standardized MD per 1 year unit.
142 We used most adjusted estimates provided by the studies as primary analysis. We used an inverse variance
143 random-effects meta-analysis to pool estimates across studies. Estimates of the association between SCTD
144 and dementia were pooled on a log scale and latter exponentiated to be reported as RR. To evaluate heter-
145 ogeneity across the studies, we used the Q statistic with a conservative p-value of 0.10.²⁶ Furthermore, we
146 calculated the I² statistic, indicating the proportion of variability in estimates of effects across studies that

147 is not due to chance alone (<25% low, 25-75% increasing, >75% high heterogeneity between studies).²⁴
148 We visually evaluated publication bias through funnel plots and, statistically, with the Egger's test.^{27,28} To
149 explore the sources of heterogeneity, we conducted several sensitivity analyses. Due to the small number
150 of studies in each group, subgroup analysis with interaction tests could not be meaningfully performed.
151 All P-values were two-sided. All analyses were conducted using STATA software, version 13.1 (College
152 Station, Texas).

153 **RESULTS**

154 **Study Selection**

155 Of the 1505 reports initially identified, 1471 remained after removing duplicates. We excluded 1435 rec-
156 ords on the basis of their abstracts and 25 after full text examination (**Figure 1**). Eleven studies met pre-
157 specified eligibility criteria and were included in the analyses. The agreement among the reviewers was
158 98.63% for the first screen of abstracts ($\kappa=0.75$) and 89.74% for the full-text search ($\kappa=0.71$).

159

160 **Study Characteristics**

161 Eleven cohorts reported data on 16,805 participants (**Table 1**). Two cohorts only included men.^{29,30} Mean
162 age was 70 years or higher, except for one study.³¹ The follow-up time ranged from 12 to 152 months
163 (median follow-up 44.4 months). Eight cohorts excluded participants treated with thyroid hormones or
164 medications altering thyroid hormone levels, while three excluded the participants taking thyroid hor-
165 mones or thyroid altering medication in sensitivity analysis.³²⁻³⁴

166

167 **Description and Quality of Studies**

168 The quality of studies was heterogeneous. Nine cohorts were population-based and two were convenience
169 samples (**Supplement Table 1**). All the cohorts used third generation TSH assays, except one using sec-
170 ond generation tests and one that did not report test details.^{35,36} Four studies had a formal adjudication
171 committee for dementia diagnosis.^{29,32} Seven studies provided information on attrition during follow-
172 up.^{20,29,30,32,33,36,37} Six studies provided information on non-violation of the proportional hazard
173 assumption.^{29,30,33,34,37,38} All studies reported adjusted data with various confounders, except one study that
174 provided us unadjusted data.³²

175

176 **Subclinical Hyperthyroidism and Dementia**

177 Among five cohorts analyzing the association between SHyper and dementia (n=6410, 329 cases of de-
178 mentia, mean follow-up 68.3 months),^{29-31,37,38} the pooled risk ratio [RR] of dementia was 1.67 (95%CI

179 1.04-2.69, $I^2=0.0\%$, p for heterogeneity=0.82) among SHyper patients compared with euthyroidism (**Fig-**
180 **ure 2**). Sensitivity analyses (**Table 2**) excluding one study with a convenience-based sample, one study
181 that followed both patients with and without thyroid hormone replacement, or studies without or not re-
182 ported formal adjudication for dementia, yielded similar results. As the Framingham study only analyzed
183 the relationship with dementia using TSH tertiles (highest tertile: TSH 1.9-9.9 mU/L) and did not measure
184 ftT_4 ,³⁴ we added this study in a sensitivity analysis and found comparable results. A sensitivity analysis
185 excluding 475 overlapping patients between two cohorts^{31,38} yielded similar results; we did not include
186 these data in the main analysis, as they examined different follow-up duration and were not based on peer-
187 reviewed published results (the investigators sent us these data separately). The relationship between
188 SHyper and AD was assessed by three studies only ($n=3186$, 108 AD cases, mean follow-up 75.0
189 months).^{30,31,38} The pooled RR for AD was 1.67 (95%CI 0.79-3.51, $I^2=16.8\%$, p for heterogeneity=0.30).

190

191 **Subclinical Hypothyroidism and Dementia**

192 Among six studies analyzing the relationship between SHypo and dementia ($n=7401$, 416 cases of demen-
193 tia, mean follow-up 64.6 months),^{29-32,37,38} the pooled RR for dementia was 1.14 (95%CI 0.84-1.55,
194 $I^2=0.0\%$, p for heterogeneity=0.49) (**Figure 2**). No individual study showed a statistically significant asso-
195 ciation. Sensitivity analyses (**Table 2**) excluding a study with a convenience-based sample, studies with
196 TSH cut-off <4.5 mU/l and potentially including individuals in the euthyroid range, two studies that fol-
197 lowed both patients with and without thyroid hormone replacement, studies without or not reported formal
198 adjudication process for dementia, one study with additional unadjusted data, or 475 overlapping partici-
199 pants between two cohorts^{31,38} yielded similar results. The addition of the Framingham study³⁴ to the main
200 analysis yielded similar results. Four studies analyzed the relationship between SHypo and AD ($n=3823$,
201 151 AD cases, mean follow-up 69.36 months).^{30-32,38} The pooled RR for AD was 0.95 (95%CI 0.52-1.71,
202 $I^2=0.0\%$, p for heterogeneity=0.89).

203

204 Subclinical Hyperthyroidism and MMSE

205 Among five studies reporting change in MMSE among participants with SHyper (n=7895, mean follow-
206 up 33.6 months),^{20,31,33,36,37} the pooled mean MMSE decline in cognitive function per year was 0.01 points
207 difference from baseline (95%CI -0.14-0.15; I²=23.5%, p for heterogeneity=0.27; **Supplement Figure 1**).
208 Results remained similar after excluding one study using a convenience-based sample or one study that
209 followed both patients with and without thyroid hormone replacement (**Supplement Table 2**). Because
210 the results of the main analyses between SHyper and dementia did not seem concordant with the results of
211 the meta-analysis looking at the decrease of MMSE in SHyper participants, we undertook a sensitivity
212 analysis including the two studies examining the relationship of SHyper and both MMSE and
213 dementia^{31,37}, which also showed no larger decline of MMSE among SHyper.

214

215 Subclinical Hypothyroidism and MMSE

216 Among seven studies reporting change in MMSE in SHypo (n=8960; mean follow-up 32.2 months),<sup>20,31-
217 33,35-37</sup> pooled mean MMSE per year declines did not significantly differ between SHypo and euthyroid
218 groups (ES 0.01 points difference from baseline, 95%CI -0.10-0.12, I²=27.6%, p for heterogeneity=0.22;
219 **Supplement Figure 1**). Sensitivity analyses (**Supplement Table 2**) excluding one study with a conven-
220 ience-based sample, studies using TSH cut-offs <4.5mU/l, one study that followed both patients with and
221 without thyroid hormone replacement, one study that might have subclinical hyperthyroid participants in
222 the control group,³⁵ or one study using unadjusted data yielded similar results.

223

224 Publication bias

225 Both graphical inspection and Egger's tests indicated little evidence of publication bias for all associa-
226 tions, although the number of available studies was small (**Supplement Figure 2**).³⁹

227

228 DISCUSSION AND CONCLUSION

229 In this meta-analysis of 11 prospective cohorts, we found that SHyper, but not SHypo, **might be** associated
230 with **an elevated** risk for dementia, while decline in MMSE over time was minimal for both conditions.

231 SHyper showed also a similar pattern of higher risk for AD. Results for the association between SHyper
232 and dementia remained similar when we pooled higher quality studies in sensitivity analysis, such as stud-
233 ies with formal adjudication process for the outcome assessment or population-based studies.

234 Our results for SHyper and risk for dementia are consistent with a non-systematic literature review sum-
235 marizing results from 13 cross-sectional or case-control, and 10 cohort studies that found supportive evi-
236 dence of an association between SHyper and cognitive impairment or dementia.⁴⁰ Of these 10 cohort stud-
237 ies, four did not meet the eligibility criteria for our systematic review: one due to missing subgroups of
238 thyroid dysfunction⁴¹, two analyzed only euthyroid participants^{42,43} and one had a retrospective design¹⁴.

239 Several other individual studies reported an association between SHyper and an elevated risk for dementia
240 as well^{14,44,45}: a retrospective nested case-control study including 2004 patients with SHyper reported a
241 hazard ratio for dementia of 1.79 (95%CI 1.28-2.51), and a cross-sectional study found a positive associa-
242 tion between SHyper and dementia in 1276 participants (33 with SHyper) aged ≥ 65 years (OR for demen-
243 tia 4.1, 95%CI 1.3-13.1).^{14,44} Van Osch et al prospectively studied 178 patients with AD and 291 commu-
244 nity-dwelling controls without objective cognitive impairment, and found an adjusted OR for AD of 2.36
245 (95%CI 1.19-4.67) in participants in the lowest (TSH<1.3mU/l) versus highest TSH tertile
246 (TSH>2.1mU/l).⁴⁵ Another population-based prospective cohort of 313 elderly adults with normal TSH
247 that found that those with a decline of cognitive dysfunction had a mean TSH of 1.78mU/l, while those
248 without decline had a mean TSH of 2.24mU/l (p=0.001).⁴⁶

249
250 Our findings **might be** consistent with the hypothesis that SHyper increases the risk of dementia, although
251 decline in MMSE over time did not differ between SHyper and euthyroidism. In our meta-analysis, only
252 two out of 11 studies published results on both dementia and MMSE in SHyper. Analyzing only these two
253 studies showed no larger decline of MMSE among participants with SHyper. This discrepancy might be

254 explained by several factors: the length of follow-up of studies on SCTD and dementia was twice the du-
255 ration of studies on SCTD and MMSE (mean follow-up time 66 vs. 33 months), different population in-
256 vestigated, the modest sensitivity of MMSE as a diagnostic tool (79%)^{47,48}, as well as for detecting mild
257 cognitive impairment and subtle changes in specific cognitive domains, and the multimodal approach
258 needed to diagnose dementia.⁴⁹ Furthermore, different scores were used as gold standard depending on the
259 type and version of diagnostic criteria (**supplement table 1**). Factors increasing the plausibility of the
260 association between SHyper and dementia were that results remained similar when we pooled higher qual-
261 ity studies in sensitivity analysis, such as studies with formal adjudication process for the outcome as-
262 sessment or population-based studies, and that SHyper also showed a pattern of higher risk for AD. How-
263 ever, higher quality studies are needed.

264
265 Several pathways could explain the association of thyroid dysfunction with cognition and dementia. Thy-
266 roid hormone has distinct effects on the cardiovascular system and thyroid dysfunction has been associat-
267 ed with several cardiovascular risk factors, including hypertension, dyslipidemia and atrial fibrillation.^{4,6}
268 In turn, these cardiovascular risk factors are associated with a higher risk of dementia and Alzheimer's
269 Disease.⁵⁰ Most studies included in our meta-analysis adjusted for cardiovascular risk factors. However,
270 the number and type of variables that were adjusted for differed for each study. Other explanations for the
271 association include direct effects of thyroid hormone, such as neurotoxicity and altered gene expression in
272 pathways relevant for dementia. The exact pathophysiological link between thyroid dysfunction and de-
273 mentia remains unclear and requires more research.

274
275 Recently, two meta analyses on SHypo and cognitive impairment were published, yielding discrepant
276 results.^{21,22} The first review included 13 studies and found a significant higher risk for cognitive alteration
277 (composite endpoint of incidence or prevalence of dementia or difference in MMSE, Wechsler Adult In-
278 telligence scale and Wechsler Memory-Revised score) in SHypo individuals younger than 75 years (OR
279 1.56; 95%CI 1.07-2.27, p=0.02), and for dementia (OR 1.81; 95%CI 1.43-2.28, p<0.01).²¹ However, the

280 authors pooled different designs (cross sectional, case-control, cohort studies), used a composite endpoint
281 of clinical events and scales as primary outcome, and found a significant risk for the primary endpoint
282 only in subclinical hypothyroid individuals younger than 75 years. As results were calculated on the basis
283 of mean age, without availability of individual patient data, they may have been subject to potential ag-
284 gregation bias (ecological fallacy).⁵¹ Contrary to that meta-analysis, all studies in our meta-analysis but
285 one (included only in a sensitivity analysis) measured fT₄ to define SCTD. The second meta-analysis ana-
286 lyzed 15 studies (9 cross-sectional, 6 prospective cohort studies) and found no association between SHypo
287 and decline in cognitive function among people aged > 60 years (cross-sectional analysis: pooled ES for
288 MMSE -0.01 points difference from baseline [95%CI -0.09-0.08]; prospective analysis, pooled MMSE
289 change: 0.03 [95%CI -0.001-0.07] p=0.055, with heterogeneity [I²] of <0.001%),²² which is consistent
290 with our findings. In comparison to these two meta-analyses, we included **only** prospective cohorts **(n=11)**
291 allowing us to reduce the bias that could arise due to differing study designs. **In order to broaden our**
292 **make literature search broad enough, we excluded studies examining solely participants with overt thyroid**
293 **disease but added no other exclusion criteria.**

294 Two small placebo controlled trials (n=89; n=94) found no evidence that treatment of SHypo with levo-
295 thyroxin was associated with improved cognitive function.^{18,52} However, these trials had several limita-
296 tions. In the trial by Parle et al,⁵² recruitment was based on a single thyroid function test, so that euthyroid
297 participants with transiently elevated TSH may have been included (50% in the placebo group were eu-
298 thyroid at 12 months), which may have underpowered the trial to detect an effect of hormone
299 replacement.⁵² Thyroxin substitution lasted only for 12-months, which may have been too short to affect
300 cognitive function. In the trial by Jorde et al,¹⁸ one third of participants did not attend follow-up. Because
301 of numerous exclusion criteria, the study population was unusually healthy, with 57% of the participants
302 having a TSH value between 3.50 and 4.99mU/l, so that it probably included many euthyroid participants.
303 The ongoing TRUST (Thyroid Hormone Replacement for Subclinical Hypothyroidism) trial (ClinicalTri-
304 als.gov: NCT01660126) may clarify whether treatment with levothyroxin in SHypo is associated with
305 better cognitive outcomes over time.⁵³

306 There are several strengths of our meta-analysis. By combining the results of 11 prospective cohorts, we
 307 analyzed a total of 432 cases of dementia and 160 cases of AD in more than 15,000 participants. By con-
 308 tacting several authors of these studies, we obtained additional data that allowed us to derive more uni-
 309 form subgroup and sensitivity analyses. In comparison to the two other meta-analyses,^{21,22} our results are
 310 less prone to bias due to pooling of heterogeneous study design and quality, because we only included
 311 prospective cohorts. We also conducted a detailed literature search in several electronic databases with as
 312 few limitations as possible in order to retrieve the maximum number of studies available on the topic, and
 313 were able to include a larger number of prospective cohorts than previous meta-analyses.^{21,22}

314
 315 Our meta-analysis has also several limitations. Except for two studies^{30,35}, studies only examined Cauca-
 316 sians, limiting the generalizability to other populations. All studies were performed in participants with a
 317 mean age ≥ 65 years and the time of follow-up was relatively short, ranging between 12 and 70.8 months
 318 (152.4 months in the Framingham Study,³⁴ added in a sensitivity analysis). ~~Except for All but two~~^{20,33}
 319 studies assessed thyroid function tests only at baseline, which is a limitation of most previously published
 320 large cohort studies on the risks of thyroid dysfunction^{54,55}. **Some participants with SCTD at baseline may**
 321 **have normalized to euthyroidism or progressed to overt thyroid disease over time.** Regarding the elderly
 322 participants in the included studies, we cannot exclude ~~a certain degree of some overdiagnosis with of~~
 323 SHypo due to the physiological rise of TSH towards upper limits during normal ageing⁵⁶. All these non-
 324 differential misclassification of thyroid status might bias the results towards no difference. The limited
 325 sensitivity of MMSE ~~to-for detect~~ing subtle changes in specific cognitive domains⁵⁷, may further limit our
 326 ability to ~~detect-verify~~ a possible decline in cognitive function. A meta-analysis of observational studies
 327 requires cautious interpretation of the results and potential biases, and confounding and heterogeneity
 328 must be carefully investigated.^{58,59} The quality of the incorporated studies was variable. We performed
 329 several sensitivity analyses to address differences between the studies, as recommended,⁵⁸ although they
 330 should be interpreted with caution given the small number of studies. In **study level meta-analysis, inter-**
 331 **pretation of subgroup data should be performed with caution. Because of the small amount of studies, no**

Commented [SD4]: A little ambiguous. Do you mean: "Except for two studies, thyroid function was assessed at baseline only"? You may want to rephrase it.

332 meaningful subgroup analysis could be performed ~~in this study~~. There are multiple confounders for cogni-
333 tive decline and dementia, the most important is age, others are depression or cardiometabolic risk factors.
334 All cohorts adjusted for age and several other confounders, but there was heterogeneity in the choice of
335 confounders, which may lead to residual confounding. Bias in the selection of included studies cannot be
336 excluded. To limit selection bias, we conducted a detailed literature search in several electronic databases
337 with broad inclusion. We performed graphical and statistical assessment to assess selective reporting, but
338 these analyses were not very sensitive considering the small number of studies included.^{25,28} Although
339 included cohorts enrolled community-dwelling adults in ambulatory visits, who are therefore less likely to
340 have an acute disease, some participants with non-thyroidal illness may have been analyzed. Included
341 studies addressed this problem differently: Two repeatedly measured thyroid values^{20,33}, one assessed and
342 adjusted for rT3 (reverse triiodothyronine)³⁸, and others adjusted for comorbidities. We cannot exclude
343 that some participants had nonthyroidal illness.

344 What are the potential clinical and research implication of our findings? Our data suggest that SHyper
345 might represent a potentially treatable risk factor for dementia. Given the relatively high prevalence of
346 both SCTD and cognitive dysfunction in the aging population, even a modest increase of dementia inci-
347 dence among individuals with SCTD might have public health implications. Data on benefit of SCTD
348 treatment are scarce, therefore current guidelines do not recommend treatment for most adults with mild
349 SCTD (serum TSH 0.1-0.45mU/l or 4.5-10.0mU/l).^{60,61} Large randomized controlled trials are required to
350 assess the efficacy of treatment in SCTD associated with dementia. For SHypo, the ongoing TRUST (Thy-
351 roid Hormone Replacement for Subclinical Hypothyroidism) trial (ClinicalTrials.gov: NCT01660126)
352 will clarify this issue.⁶²

353
354 In summary, our systematic review and meta-analysis indicates that SHyper, but not SHypo, might be
355 associated with a modestly elevated risk of dementia. Neither SHyper nor SHypo were significantly asso-
356 ciated with a faster decline in MMSE over time, as compared to euthyroidism. Available data were lim-
357 ited, and additional large, high-quality prospective cohort studies are needed.

358

359 **Financial Support**

360 Prof. N. Rodondi's work is supported by a grant from the Swiss National Science Foundation (SNSF
361 320030-150025). Dr Tinh-Hai Collet's research is supported by grants from the Swiss National Science
362 Foundation (PBLAP3-145870, P3SMP3-155318).

363

364 **Acknowledgements**

365 The authors thank Francesc Formiga Pérez (Bellvitge University Hospital, Barcelona, Spain), Paola Forti
366 (Department of Medical and Surgical Sciences, Bologna, Italy), Mohammad Arfan Ikram (Erasmus Medi-
367 cal Center, Rotterdam, The Netherlands), Bu Yeap (University of Western Australia and Fiona Stanley
368 and Freemantle Hospitals, Perth, Australia) for supplying additional data from their studies.

369

370 **References**

- 371 1. Biondi B, Cooper DS. The clinical significance of subclinical thyroid dysfunction. *Endocrine*
372 *reviews*. 2008;29(1):76-131.
- 373 2. Delitala AP, Pilia MG, Ferreli L, et al. Prevalence of unknown thyroid disorders in a Sardinian
374 cohort. *European journal of endocrinology / European Federation of Endocrine Societies*.
375 2014;171(1):143-149.
- 376 3. Helfand M. Screening for subclinical thyroid dysfunction in nonpregnant adults: a summary of
377 the evidence for the U.S. Preventive Services Task Force. *Annals of internal medicine*.
378 2004;140(2):128-141.
- 379 4. Rodondi N, den Elzen WP, Bauer DC, et al. Subclinical hypothyroidism and the risk of coronary
380 heart disease and mortality. *Jama*. 2010;304(12):1365-1374.
- 381 5. Gencer B, Collet TH, Virgini V, et al. Subclinical thyroid dysfunction and the risk of heart failure
382 events: an individual participant data analysis from 6 prospective cohorts. *Circulation*.
383 2012;126(9):1040-1049.
- 384 6. Collet TH, Gusssekloo J, Bauer DC, et al. Subclinical hyperthyroidism and the risk of coronary heart
385 disease and mortality. *Arch Intern Med*. 2012;172(10):799-809.
- 386 7. Wirth CD, Blum MR, da Costa BR, et al. Subclinical thyroid dysfunction and the risk for fractures:
387 a systematic review and meta-analysis. *Annals of internal medicine*. 2014;161(3):189-199.
- 388 8. Waldemar G, Dubois B, Emre M, et al. Recommendations for the diagnosis and management of
389 Alzheimer's disease and other disorders associated with dementia: EFNS guideline. *European*
390 *journal of neurology*. 2007;14(1):e1-26.
- 391 9. Ebly EM, Parhad IM, Hogan DB, Fung TS. Prevalence and types of dementia in the very old:
392 results from the Canadian Study of Health and Aging. *Neurology*. 1994;44(9):1593-1600.
- 393 10. Di Carlo A, Baldereschi M, Amaducci L, et al. Cognitive impairment without dementia in older
394 people: prevalence, vascular risk factors, impact on disability. The Italian Longitudinal Study on
395 Aging. *Journal of the American Geriatrics Society*. 2000;48(7):775-782.
- 396 11. Petersen RC, Roberts RO, Knopman DS, et al. Mild cognitive impairment: ten years later. *Archives*
397 *of neurology*. 2009;66(12):1447-1455.
- 398 12. Voisin T, Touchon J, Vellas B. Mild cognitive impairment: a nosological entity? *Current Opinion in*
399 *Neurology*. 2003;16:S43-S45.
- 400 13. Cooper DS, Biondi B. Subclinical thyroid disease. *Lancet*. 2012;379(9821):1142-1154.
- 401 14. Vadiveloo T, Donnan PT, Cochrane L, Leese GP. The Thyroid Epidemiology, Audit, and Research
402 Study (TEARS): morbidity in patients with endogenous subclinical hyperthyroidism. *The Journal*
403 *of clinical endocrinology and metabolism*. 2011;96(5):1344-1351.
- 404 15. Baldini IM, Vita A, Mauri MC, et al. Psychopathological and cognitive features in subclinical
405 hypothyroidism. *Prog Neuropsychopharmacol Biol Psychiatry*. 1997;21(6):925-935.
- 406 16. Zhu DF, Wang ZX, Zhang DR, et al. fMRI revealed neural substrate for reversible working memory
407 dysfunction in subclinical hypothyroidism. *Brain : a journal of neurology*. 2006;129(Pt 11):2923-
408 2930.
- 409 17. Ganguli M, Burmeister LA, Seaberg EC, Belle S, DeKosky ST. Association between dementia and
410 elevated TSH: a community-based study. *Biol Psychiatry*. 1996;40(8):714-725.
- 411 18. Jorde R, Waterloo K, Storhaug H, Nyrnes A, Sundsfjord J, Jenssen TG. Neuropsychological
412 function and symptoms in subjects with subclinical hypothyroidism and the effect of thyroxine
413 treatment. *The Journal of clinical endocrinology and metabolism*. 2006;91(1):145-153.
- 414 19. Park YJ, Lee EJ, Lee YJ, et al. Subclinical hypothyroidism (SCH) is not associated with metabolic
415 derangement, cognitive impairment, depression or poor quality of life (QoL) in elderly subjects.
416 *Archives of gerontology and geriatrics*. 2010;50(3):e68-73.

Formatted: French (Switzerland)

- 417 20. Wijsman LW, de Craen AJ, Trompet S, et al. Subclinical thyroid dysfunction and cognitive decline
418 in old age. *PLoS One*. 2013;8(3):e59199.
- 419 21. Pasqualetti G, Pagano G, Rengo G, Ferrara N, Monzani F. Subclinical Hypothyroidism and
420 Cognitive Impairment: Systematic Review and Meta-Analysis. *The Journal of clinical*
421 *endocrinology and metabolism*. 2015;100(11):4240-4248.
- 422 22. Akintola AA, Jansen SW, van Bodegom D, et al. Subclinical hypothyroidism and cognitive function
423 in people over 60 years: a systematic review and meta-analysis. *Frontiers in aging neuroscience*.
424 2015;7:150.
- 425 23. BMJ Evidence Centre Study design search filters. *BMJ* 2012;
426 <http://clinicalevidence.bmj.com/x/set/static/ebm/learn/665076.html>.
- 427 24. da Costa BR, Juni P. Systematic reviews and meta-analyses of randomized trials: principles and
428 pitfalls. *European heart journal*. 2014;35(47):3336-3345.
- 429 25. Sterne JA, Egger M, Smith GD. Systematic reviews in health care: Investigating and dealing with
430 publication and other biases in meta-analysis. *Bmj*. 2001;323(7304):101-105.
- 431 26. Petitti DB. Approaches to heterogeneity in meta-analysis. *Statistics in medicine*.
432 2001;20(23):3625-3633.
- 433 27. Egger M, Davey Smith G, Schneider M, Minder C. Bias in meta-analysis detected by a simple,
434 graphical test. *BMJ*. 1997;315(7109):629-634.
- 435 28. Harbord RM, Egger M, Sterne JA. A modified test for small-study effects in meta-analyses of
436 controlled trials with binary endpoints. *Statistics in medicine*. 2006;25(20):3443-3457.
- 437 29. Yeap BB, Alfonso H, Chubb SA, et al. Higher free thyroxine levels predict increased incidence of
438 dementia in older men: the Health in Men Study. *The Journal of clinical endocrinology and*
439 *metabolism*. 2012;97(12):E2230-2237.
- 440 30. de Jong FJ, Masaki K, Chen H, et al. Thyroid function, the risk of dementia and neuropathologic
441 changes: the Honolulu-Asia aging study. *Neurobiology of aging*. 2009;30(4):600-606.
- 442 31. Kalmijn S, Mehta KM, Pols HA, Hofman A, Drexhage HA, Breteler MM. Subclinical
443 hyperthyroidism and the risk of dementia. The Rotterdam study. *Clinical endocrinology*.
444 2000;53(6):733-737.
- 445 32. Forti P, Olivelli V, Rietti E, et al. Serum thyroid-stimulating hormone as a predictor of cognitive
446 impairment in an elderly cohort. *Gerontology*. 2012;58(1):41-49.
- 447 33. Gussekloo J, van Exel E, de Craen AJ, Meinders AE, Frolich M, Westendorp RG. Thyroid status,
448 disability and cognitive function, and survival in old age. *Jama*. 2004;292(21):2591-2599.
- 449 34. Tan ZS, Beiser A, Vasan RS, et al. Thyroid function and the risk of Alzheimer disease: the
450 Framingham Study. *Arch Intern Med*. 2008;168(14):1514-1520.
- 451 35. Yamamoto N, Ishizawa K, Ishikawa M, et al. Cognitive function with subclinical hypothyroidism in
452 elderly people without dementia: one year follow up. *Geriatrics & gerontology international*.
453 2012;12(1):164-165.
- 454 36. Hogervorst E, Huppert F, Matthews FE, Brayne C. Thyroid function and cognitive decline in the
455 MRC Cognitive Function and Ageing Study. *Psychoneuroendocrinology*. 2008;33(7):1013-1022.
- 456 37. Formiga F, Ferrer A, Padros G, et al. Thyroid status and functional and cognitive status at
457 baseline and survival after 3 years of follow-up: the OCTABAIX study. *European journal of*
458 *endocrinology / European Federation of Endocrine Societies*. 2014;170(1):69-75.
- 459 38. de Jong FJ, den Heijer T, Visser TJ, et al. Thyroid hormones, dementia, and atrophy of the medial
460 temporal lobe. *The Journal of clinical endocrinology and metabolism*. 2006;91(7):2569-2573.
- 461 39. Begg CB, Mazumdar M. Operating characteristics of a rank correlation test for publication bias.
462 *Biometrics*. 1994;50(4):1088-1101.
- 463 40. Gan EH, Pearce SH. Clinical review: The thyroid in mind: cognitive function and low thyrotropin in
464 older people. *The Journal of clinical endocrinology and metabolism*. 2012;97(10):3438-3449.

Field Code Changed

- 465 41. Annerbo S, Wahlund LO, Lökk J. The significance of thyroid-stimulating hormone and
 466 homocysteine in the development of Alzheimer's disease in mild cognitive impairment: a 6-year
 467 follow-up study. *American journal of Alzheimer's disease and other dementias*. 2006;21(3):182-
 468 188.
- 469 42. Wahlin A, Bunce D, Wahlin TB. Longitudinal evidence of the impact of normal thyroid stimulating
 470 hormone variations on cognitive functioning in very old age. *Psychoneuroendocrinology*.
 471 2005;30(7):625-637.
- 472 43. Volpato S, Guralnik JM, Fried LP, Remaley AT, Cappola AR, Launer LJ. Serum thyroxine level and
 473 cognitive decline in euthyroid older women. *Neurology*. 2002;58(7):1055-1061.
- 474 44. Bensenor IM, Lotufo PA, Menezes PR, Sczufca M. Subclinical hyperthyroidism and dementia:
 475 the Sao Paulo Ageing & Health Study (SPAH). *BMC Public Health*. 2010;10:298.
- 476 45. van Osch LA, Hogervorst E, Combrinck M, Smith AD. Low thyroid-stimulating hormone as an
 477 independent risk factor for Alzheimer disease. *Neurology*. 2004;62(11):1967-1971.
- 478 46. Moon JH, Park YJ, Kim TH, et al. Lower-but-normal serum TSH level is associated with the
 479 development or progression of cognitive impairment in elderly: Korean Longitudinal Study on
 480 Health and Aging (KLoSHA). *The Journal of clinical endocrinology and metabolism*.
 481 2014;99(2):424-432.
- 482 47. Hancock P, Lerner AJ. Test Your Memory test: diagnostic utility in a memory clinic population.
 483 *International journal of geriatric psychiatry*. 2011;26(9):976-980.
- 484 48. Sheehan B. Assessment scales in dementia. *Therapeutic advances in neurological disorders*.
 485 2012;5(6):349-358.
- 486 49. Galvin JE, Sadowsky CH, Nincds A. Practical guidelines for the recognition and diagnosis of
 487 dementia. *J Am Board Fam Med*. 2012;25(3):367-382.
- 488 50. de Bruijn RF, Ikram MA. Cardiovascular risk factors and future risk of Alzheimer's disease. *BMC*
 489 *Med*. 2014;12:130.
- 490 51. Egger M, Davey Smith G, Altman D, eds. *Systematic Reviews in Health Care: Meta-analysis in*
 491 *Context*. London, England: BMJ Publishing Group; 2001.
- 492 52. Parle J, Roberts L, Wilson S, et al. A randomized controlled trial of the effect of thyroxine
 493 replacement on cognitive function in community-living elderly subjects with subclinical
 494 hypothyroidism: the Birmingham Elderly Thyroid study. *The Journal of clinical endocrinology and*
 495 *metabolism*. 2010;95(8):3623-3632.
- 496 53. Quinn TJ, Gussekloo J, Kearney P, Rodondi N, Stott DJ. Subclinical thyroid disorders. *Lancet*.
 497 2012;380(9839):335-336; author reply 336-337.
- 498 54. Cappola AR, Fried LP, Arnold AM, et al. Thyroid status, cardiovascular risk, and mortality in older
 499 adults. *Jama*. 2006;295(9):1033-1041.
- 500 55. Boekholdt SM, Titan SM, Wiersinga WM, et al. Initial thyroid status and cardiovascular risk
 501 factors: the EPIC-Norfolk prospective population study. *Clinical endocrinology*. 2010;72(3):404-
 502 410.
- 503 56. Boucai L, Hollowell JG, Surks MI. An approach for development of age-, gender-, and ethnicity-
 504 specific thyrotropin reference limits. *Thyroid : official journal of the American Thyroid*
 505 *Association*. 2011;21(1):5-11.
- 506 57. Trzepacz PT, Hochstetler H, Wang S, Walker B, Saykin AJ. Relationship between the Montreal
 507 Cognitive Assessment and Mini-mental State Examination for assessment of mild cognitive
 508 impairment in older adults. *BMC geriatrics*. 2015;15:107.
- 509 58. Stroup DF, Berlin JA, Morton SC, et al. Meta-analysis of observational studies in epidemiology: a
 510 proposal for reporting. Meta-analysis Of Observational Studies in Epidemiology (MOOSE) group.
 511 *Jama*. 2000;283(15):2008-2012.

- 512 59. Altman DG. Systematic reviews of evaluations of prognostic variables. *BMJ*. 2001;323(7306):224-
513 228.
- 514 60. Surks MI, Ortiz E, Daniels GH, et al. Subclinical thyroid disease: scientific review and guidelines
515 for diagnosis and management. *Jama*. 2004;291(2):228-238.
- 516 61. Rugge JB, Bougatsos C, Chou R. Screening and treatment of thyroid dysfunction: an evidence
517 review for the U.S. Preventive Services Task Force. *Annals of internal medicine*. 2015;162(1):35-
518 45.
- 519 62. Rodondi N, Bauer DC. Subclinical hypothyroidism and cardiovascular risk: how to end the
520 controversy. *J Clin Endocrinol Metab*. 2013;98(6):2267-2269.
- 521

522 **Table 1. Description of Included Studies for the Effect of Subclinical Thyroid Dysfunction on Dementia/Mini-Mental State Examination**
 523 **(MMSE)**

Study, Year of publication	Population N	Women %	Mean age; SD years	Follow- up time months	Age min-max. years	TSH cutoff level (mU/l)		fT4 measured	Thyroid hormone recipients excluded?
						SHypo	SHyper		
Rotterdam, ³¹ 2000 [§]	1843	61.9	68.8; 7.5	25.2	55-93	> 4.0	< 0.4	yes	yes
Leiden 85-Plus Study, ³³ 2004	558	66.0	85.0; 0.0	44.4	85	> 4.8	< 0.3	yes	in SA
Rotterdam Scan, ³⁸ 2006	1077	51.2	72.3 [†] ; 7.4	66.0	60-90	> 4.3	< 0.4	yes	yes
Health Ageing, ³⁶ 2008	1047	51.0	73.6; 6.2	24.0	64-94	> 4.8	< 0.3	yes	yes
Framingham, ³⁴ 2008 [‡]	1864	59.0	71.0; 7.0	152.4		‡	‡	no	in SA
HAAS, ³⁰ 2009	665	0.0	78.0	56.4	71-93	> 4.3	< 0.4	yes	yes
Japanese Study, ³⁵ 2010	229	65.0	80.9; 4.7	12.0		> 4.0	NR	yes	yes
Conselice, ³² 2012 [§]	660	52.9	73.3; 6.0	45.6	65-91	> 4.5	< 0.45	yes	in SA
HIMS, ²⁹ 2012	3401	0.0	76.8; 3.5	70.8 [†]	70-89	> 4.0	< 0.4	yes	yes
PROSPER, ²⁰ 2013	5154	49.4	75.0	38.4	80-82	> 4.5	< 0.45	yes	yes
OCTABAIX, ³⁷ 2014	307	54.6	85.0; 0.0	36.0	85	> 5	< 0.25	yes	yes

524 **Abbreviations:** Conselice = Conselice Study of Brain Ageing; Framingham = The Framingham Study; fT4 = free thyroxine; HAAS = Honolulu-Asia Aging Study;
 525 Health Ageing = Health Ageing Study; HIMS = The Health in Men Study; Japanese Study = Cognitive function with subclinical hypothyroidism in elderly people
 526 without dementia: One year follow up; Leiden 85+ = Leiden 85-plus Study; NR = not reported; OCTABAIX = OCTABAIX Study; PROSPER = The PROSPER
 527 Study; Rotterdam Scan = Rotterdam Scan Study; Rotterdam = The Rotterdam Study; SA = sensitivity analysis; SHyper = subclinical hyperthyroidism; SHypo =
 528 subclinical hypothyroidism; TSH = thyrotropin.

529 [†] median

530 [‡] The Framingham Study did not use TSH cut-offs for SCTD, but tertiles: tertile 1: 0.1-1.08mU/l for women, 0.10-0.90mU/l for men; tertile 2: 1.10-2.03mU/l for
 531 women, 0.99-1.80mU/l for men; tertile 3: 2.10-9.90mU/l for women, 1.09-9.90mU/l for men. Therefore, this study could not be included in the meta-analysis
 532 but was added to a sensitivity analysis.

533 [§] Due to additional unpublished data provided by the authors, the studies could be incorporated in the meta-analysis on SCTD and MMSE; unadjusted data.

534 ^{||} Due to additional unpublished data provided by the authors, the study could be incorporated in the meta-analysis on SCTD and dementia.

535 **Table 2: Sensitivity Analyses on the Association between Subclinical Thyroid Dysfunction (SCTD)**
 536 **and Dementia**

	RR [†]	95% CI	p for heterogeneity	N of studies
Subclinical Hyperthyroidism and Dementia				
Main analysis ^{29-31,37,38}	1.67	1.04, 2.69	0.82	5
Exclusion of one study using a convenience-based sample ^{30,31,37,38}	1.73	1.07, 2.80	0.82	4
Exclusion of one study enrolling patients with and without thyroid hormone replacement ^{29,31,37,38}	1.73	0.96, 3.11	0.68	4
Exclusion of studies without formal adjudication ^{30,31}	1.86	0.96, 3.62	0.46	2
Exclusion of overlapping 475 participants from 2 studies ^{29-31,37,38‡}	1.60	0.92, 2.78	0.82	5
Main analysis adding the Framingham Study ^{29-31,34,37,38 §}	1.46	1.08, 1.97	0.84	6
Subclinical Hypothyroidism and Dementia				
Main analysis ^{29-32,37,38}	1.14	0.84, 1.55	0.49	6
Exclusion of one study using a convenience-based population ^{30-32,37,38}	1.31	0.91, 1.89	0.65	5
Exclusion of studies with TSH cut-off <4.5mU/l ^{32,37}	1.36	0.91, 2.05	0.59	2
Exclusion of two studies enrolling patients with and without thyroid hormone replacement ^{29,31,37,38}	1.14	0.69, 1.90	0.29	4
Exclusion of studies without formal adjudication process ³⁰⁻³²	1.14	0.73, 1.78	0.57	3
Exclusion of one study with unadjusted data ^{29-31,37,38}	1.06	0.71, 1.60	0.39	5
Exclusion of overlapping 475 participants from 2 studies ^{29-32,37,38 ‡}	1.10	0.80, 1.50	0.66	6
Main analysis adding the Framingham Study ^{29-32,34,37,38§}	1.18	0.91, 1.52	0.60	7

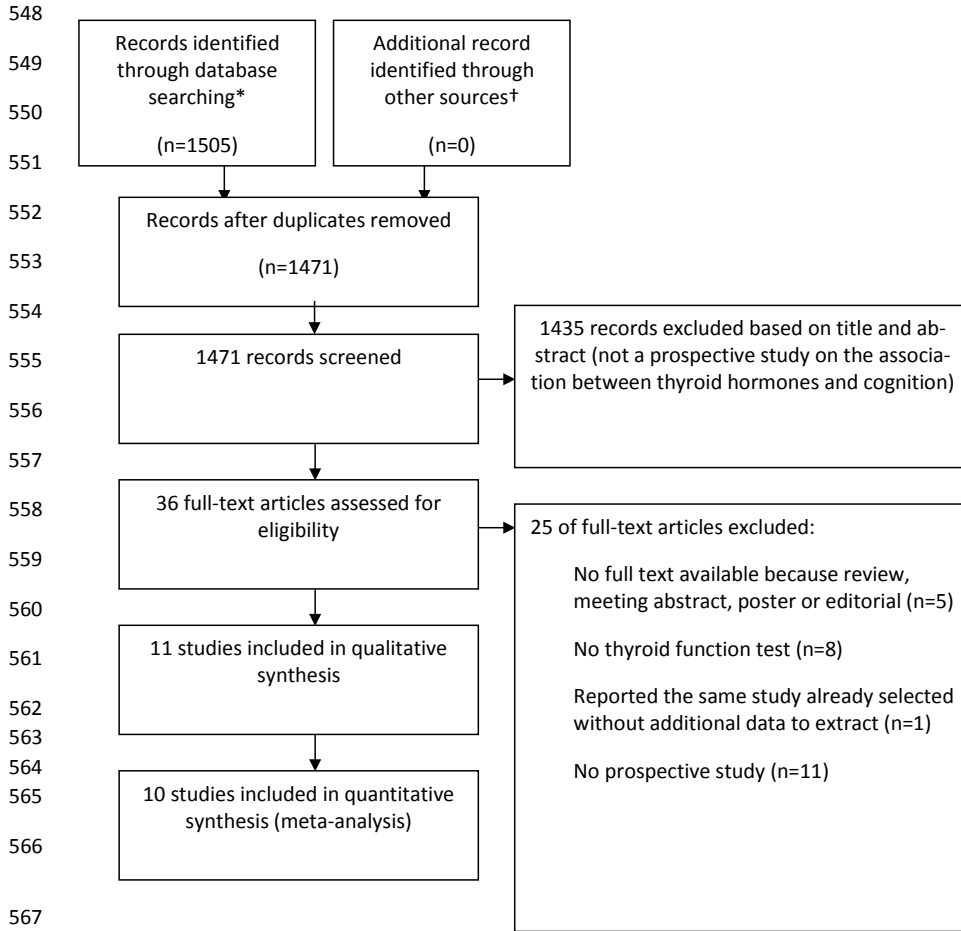
537 **Abbreviations:** CI = confidence interval; N = number; RR = risk ratio; SCTD = subclinical thyroid dysfunction; TSH =
 538 thyrotropin.

539 [†] RR>1 indicates higher risk of an event in SCTD than in euthyroidism. A positive mean difference indicates larger
 540 decrease in cognitive function in SCTD than in euthyroidism.

541 [‡] Performed on data additionally provided by the author; we did not include these data in the main analysis, as they
 542 examined different follow-up duration and were not based on peer-reviewed published results (the investigators sent us
 543 these data separately)

544 [§] As the Framingham Study did not use TSH cut-off for SCTD, we compared lowest versus highest tertiles (lowest
 545 tertile: 0.10-1.08 for women, 0.10-0.90 for men; highest tertile 2.10-9.90 for women, 1.90-9.90 for men).³⁴

546 **Figure 1: Study Evaluation for Inclusion in the Meta-Analysis, adapted from PRISMA Statement**
 547 **Flow Diagram**

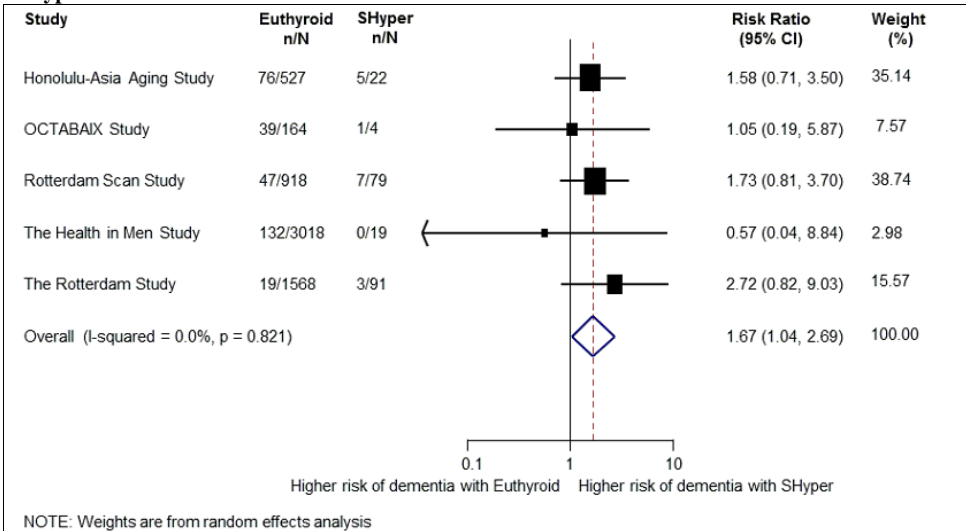


568
 569
 570
 571
 572
 573
 574
 575

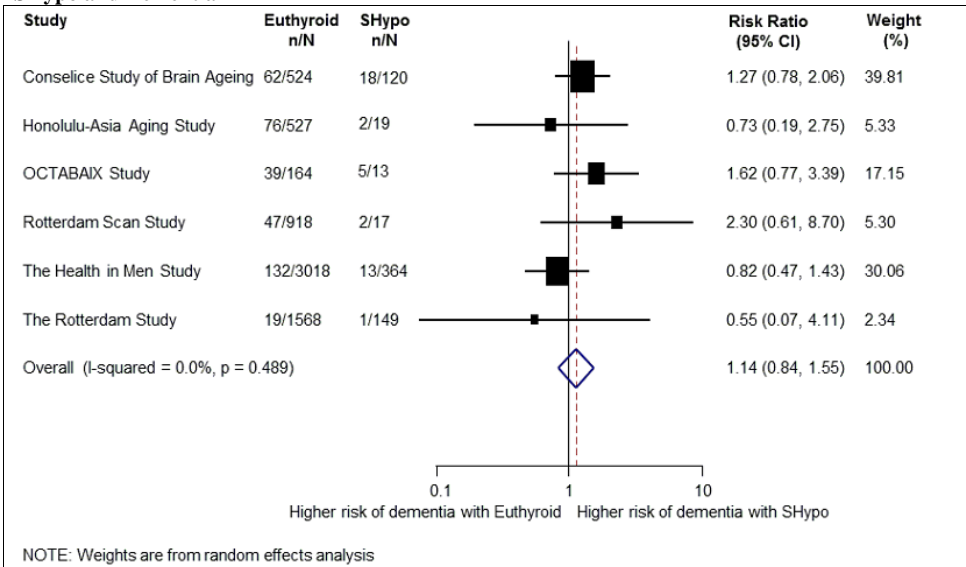
* Until November 11, 2014 for MEDLINE and November 14, 2014 for EMBASE.

† From key articles in the field and contact with authors.

Figure 2: Association between Subclinical Thyroid Dysfunction and Dementia
SHyper and Dementia



SHypo and Dementia



576 **Legend, Figure 2:** RR>1 indicates higher risk of an event in SCTD than in euthyroidism. Abbreviations: 95% CI = 95%
 577 confidence interval; Euthyroid = euthyroidism; n = number of patients with dementia per group; N = total number of
 578 patients per group; SHyper = subclinical hyperthyroidism; SHypo = subclinical hypothyroidism

579 Supplement Table 1: Quality Assessment of Included Studies

Study	Population, setting	Assessment of dementia or Alzheimer's Disease	Formal adjudication for dementia or Alzheimer's Disease	Blinding of study investigators regarding TSH	Blinding of patients regarding TSH	Loss of FUP (reasons for incompleteness)	TSH assessment	TSH assay	Adjustment for potential confounders
Rotterdam, ³¹ 2000	population-based, ambulatory / subjects in institutions	D: DSM-III-R (3-step-screening: 1. MMSE (<26), GMSS (<0); 2. CAMDEX; 3. Neurologist, Neuropsychologist, Brain Image); AD: NINCDS-ADRDA	yes	NR	NR	NR	BL	3 rd	Age, sex, atrial fibrillation, education (years), cigarette smoking (never, former, current), depressive symptoms, APOE
Leiden 85-Plus Study, ³³ 2004	population-based, ambulatory	not assessed	dementia not assessed	NR	NR	279 (death [209], refusal [70])	BL + 3 year FUP	3 rd	** Sex, self-reported educational level (<6 vs > 6 years of education), albumin, CRP, MMSE at baseline, subjective health, type 2 diabetes, myocardial infarction, stroke, COPD, arthritis, Parkinson disease
Rotterdam Scan, ³⁸ 2006	population-based, ambulatory / subjects in institutions	D: DSM-III-R (MR for all study subjects, then three step protocol for screening: 1. Screening MMSE (<26) and GMSS (>0); 2. CAMDEX; 3. Neuropsychological testing); AD: NINCDS-ADRDA	NR	NR	NR	NR	BL	3 rd	Age, sex, educational level, depressive symptoms, cigarette smoking, cardiac medication, beta-blockers, systemic corticosteroid use, atrial fibrillation, diabetes mellitus, BMI; total cholesterol and HDL levels, creatinine, homocysteine level, T3/rT3, TPO-AB
Health Aging, ³⁶ 2008	population-based, ambulatory	not assessed	dementia not assessed	yes	NR	148	BL	2 nd	Age, sex, education, mood, baseline MMSE, high blood pressure, smoking, history of diabetes mellitus, heart attack, stroke, study site

Study	Population	Assessment of dementia or Alzheimer's Disease	Formal adjudication for dementia or Alzheimer's Disease	Blinding of study investigators regarding TSH	Blinding of patients regarding TSH	Loss of FUP (reasons for incompleteness)	TSH assessment	TSH assay	Adjustment for potential confounders
Framingham, ³⁴ 2008	population-based, ambulatory	D: DSM-IV and Clinical Dementia Rating ≥ 1 and symptoms of dementia ≥ 6 months (Multi step protocol: 1. Neuropsychological Testing, MMSE; 2. Neurological and neuropsychological examinations); AD: NINCDS-ADRDA D: DSM-III-R	yes	NR	NR	295 (reason unclear)	2 years before BL	3 rd	Age, APOE, education level (dichotomized: high school completion yes/no), plasma homocysteine, current smoking, body-mass index, prevalent stroke, atrial fibrillation
HAAS, ³⁰ 2009	population-based, ambulatory	(Multi step protocol: 1. CASI; 2. CERAD; 3. Neurologic Exam and Interview. In case of Dementia: neuroimaging and blood test); AD: NINCDS-ADRDA; CERAD	yes	NR	NR	335 (dementia at BL [131], death or refusal [204])	BL	3 rd	Age, age at death (autopsy-study), educational level, depressive symptoms, diabetes mellitus, smoking status, systolic and diastolic blood pressure, use of thyroid medication, thyroid-altering drugs (incl. beta-blocking agents and anti-arrhythmics), BMI, biochemical markers (albumin, total and HDL cholesterol, APOE).
Japanese Study, ³⁵ 2010	population-based, ambulatory	not assessed	dementia not assessed	NR	NR	NR	BL	NR	Sex, age, BMI, physical status, diabetes mellitus, cardiovascular disease, hypertension, dyslipidemia, points of BL cognitive function, arterial stiffness.

Study	Population	Assessment of dementia or Alzheimer's Disease	Formal adjudication for dementia or Alzheimer's Disease	Blinding of study investigators regarding TSH	Blinding of patients regarding TSH	Loss of FUP (reasons for incompleteness)	TSH assessment	TSH assay	Adjustment for potential confounders
Conselice, ³² 2012	population-based, ambulatory	D: DSM-IV (Multi step screening: 1. Interview, IADL, GDS, MMSE (<24; >9), neurological examination, blood test; 2. Neuropsychological testing with Mental Deterioration Battery, Prose Memory Test); AD: NINCDS-ADRDA	yes	no	NR	Exclusion at BL: dementia [60], MCI [71], unclassifiable cognitive status [22], at BL or FUP ; missing laboratory data [32], missing information about cognitive status at FUP [82], due to death [82], refusal [52] or failure to be traced 2848 (exclusion due to: history of thyroid disease [2139], thyroid drugs [71], missing data [82], hyperthyroidism [14], prevalent dementia [12], with SMMSE < 24 [521], fT4 < 9 pmol/l [1], fT4 > 25pmol/l [8])	BL	3 rd	*
HIMS, ²⁹ 2012	convenience-based, ambulatory	D: ICD-9/10	NR	NR	NR		BL	3 rd	Age, BMI, smoking-status, education, SMMSE, social support, medical comorbidities, sensorial impairment

Study	Population	Assessment of dementia or Alzheimer's Disease	Formal adjudication for dementia or Alzheimer's Disease	Blinding of study investigators regarding TSH	Blinding of patients regarding TSH	Loss of FUP (reasons for incompleteness)	TSH assessment	TSH assay	Adjustment for potential confounders
PROSPER, ²⁰ 2013	convenience-based, ambulatory	not assessed	dementia not assessed	NR	NR	650 (exclusion at BL: antithyroid drugs [6], levothyroxine[159], amiodarone [20], high FT4 and high TSH [7], low FT4 and low TSH [1], overt thyroid disease [146], missing FT4 [303], missing TSH [8])	BL + at 6 Month	3 rd	Sex, age, education, country, Apo E genotype
OCTABAIX, ³⁷ 2014	population-based, ambulatory	NR (Assessments: BI, BADL, LI; MMSE <23/35pts; Mini Nutritional Assessment, Gait Rating Scale, QoL-VAS, CS)	NR	NR	NR	102 (death during FUP [51], from the 256 surviving patients only 205 with geriatric assessment, reason unclear)	BL	3 rd	** Sex, education, marital status, cardiovascular risk factors such as treatment for high blood pressure above 140/90, diabetes mellitus, dyslipidemia, heart failure, medication, prevalence for stroke or dementia, number of drugs prescribed

583 **Abbreviations:** AD = Alzheimer's disease; APOE = Apolipoprotein-E ε4 allele status; BADL = Basic Activities of Daily Living; BI = Barthel Index; BL = Baseline; BMI =
 584 Body mass index; CAMDEX = Cambridge examination for mental disorders of the elderly ; CASI = Cognitive Abilities Screening Instrument; CERAD = Consortium to Es-
 585 tablish a Registry for Alzheimer Disease battery; Conselice = Conselice Study of Brain Ageing; COPD = Chronic obstructive pulmonary disease; CRP = C-reactive protein;
 586 CS = Charlson Score; D = dementia; DSM = Diagnostic and Statistical Manual of Mental Disorders; Framingham = The Framingham Study; FT₄ = Free thyroxine; FUP =
 587 Follow-up; GDS = Geriatric Depression Scale; GMSS = Geriatric Mental State Schedule ; HAAS = Honolulu-Asia Aging Study; HDL = High-density lipoproteins; Health
 588 Ageing = Health Ageing Study; HIMS = The Health in Men Study; IADL = Instrumental Activities of Daily Living; ICD = International Statistical Classification of Diseases
 589 and Related Health Problems; Japanese Study = Cognitive function with subclinical hypothyroidism in elderly people without dementia: One year follow up; Leiden 85+ =
 590 Leiden 85-Plus Study; LI = Lawton Index; MCI = Mild cognitive impairment; MMSE = Mini Mental State Exam; NINCDS-ADRDA = National Institute of Neurological and
 591 Communicative Disorders and Stroke and the Alzheimer's Disease and Related Disorders Association; NR = Not reported; OCTABAIX = OCTABAIX Study; PROSPER = Th
 592 PROSPER Study; pts = points; QoL-VAS = Quality of Life Test Visual Analogue Scale; Rotterdam Scan = Rotterdam Scan Study; Rotterdam = The Rotterdam Study; SA =

Field Code Changed

Field Code Changed

593 Sensitivity analysis; SHyper = Subclinical hyperthyroidism; SHypo = Subclinical hypothyroidism; SMMSE = Standardized mini mental state exam; TPO-AB = Thyroid pe-
594 roxidase antibodies; TSH = thyrotropin.

595

596 * unadjusted additional data has been used for this meta-analysis. The original study adjusted for age, sex, education, serum cholesterol, Geriatric Depression Scale Score,
597 BMI, hypertension, diabetes mellitus, history of cardiovascular disease, plasma total homocysteine.

598 ** No adjustment for age because of same aged cohort.

599

600 **Supplement Table 2: Sensitivity Analyses on the Association between Subclinical Thyroid Dysfunction and Annualized Mean Change in Mini-Mental State Examination (MMSE)**
 601

	ES	95% CI	p for heterogeneity	N. of studies
Subclinical Hyperthyroidism and MMSE				
Main analysis ^{20,31,33,36,37}	0.01	-0.14, 0.15	0.27	5
Exclusion of one study using a convenience-based population ^{31,33,36,37}	0.06	-0.36, 0.49	0.20	4
Exclusion of one study enrolling patients with and without thyroid hormone replacement ^{20,31,33,37}	-0.01	-0.11, 0.09	0.68	4
Studies indicating results for both MMSE and dementia ^{31,37}	-0.09	-0.26, 0.08	0.80	2
Subclinical Hypothyroidism and MMSE				
Main analysis ^{20,31,33,35,37}	0.01	-0.10, 0.12	0.22	7
Exclusion of one study using a convenience-based population ^{31,33,35,37}	0.06	-0.06, 0.18	0.48	6
Exclusion of studies with TSH cut-off <4.5mU/l ^{20,32,33,36,37}	0.07	-0.13, 0.28	0.09	5
Exclusion of one study Exclusion of one study enrolling patients with and without thyroid hormone replacement ^{20,31,33,35,37}	-0.01	-0.12, 0.11	0.22	6
Exclusion of one study with unadjusted data ^{20,31,33,35,37}	-0.06	-0.13, 0.01	0.70	6
Studies indicating results for both MMSE and dementia ^{31,32,37}	0.06	-0.14, 0.26	0.18	3
Exclusion of the Japanese Study ^{20,31,33,36,37†}	0.01	-0.11, 0.13	0.16	6

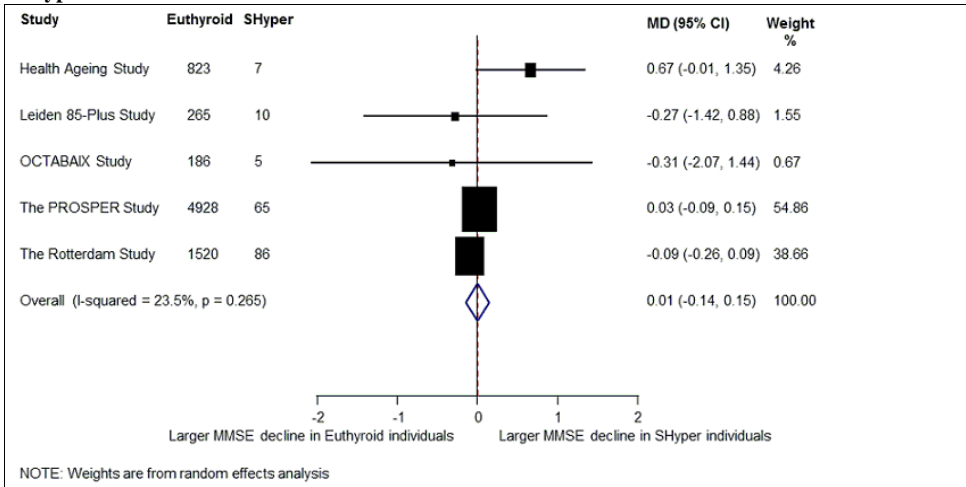
602 **Abbreviations:** MD = mean difference in change from baseline for mini mental state exam score. MD >0 indicates
 603 higher decline of MMSE in SCTD than in euthyroidism.

604 Abbreviations: CI = confidence interval; ES = effect size, defined as annualized mean change in MMSE; MMSE =
 605 Mini-Mental State Examination; N = number; SCTD = subclinical thyroid dysfunction; TSH = thyrotropin.

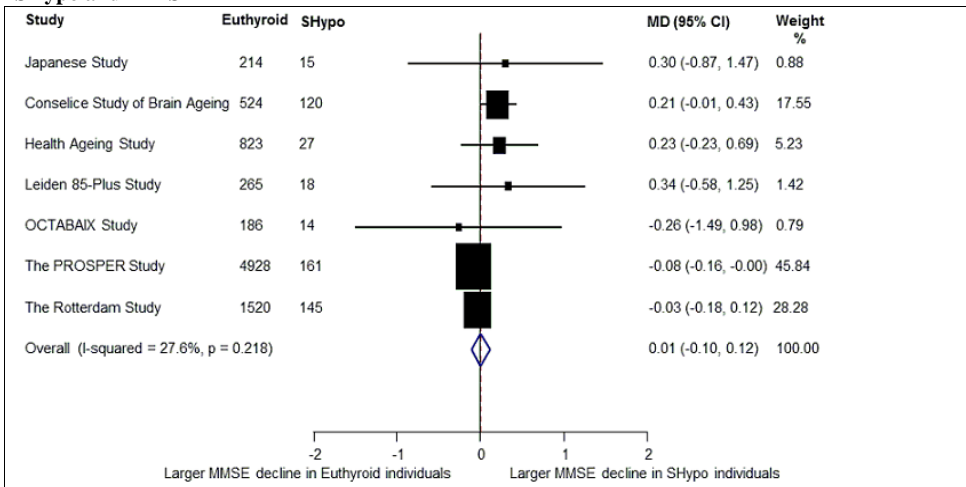
606 † This study³⁵ was excluded in the sensitivity analysis, because it might have included subclinical hyperthyroid par-
 607 ticipants in the control group.

608

609 **Supplement Figure 1: Association between Subclinical Thyroid Dysfunction and Annualized Mean**
 610 **Change in Mini-Mental State Examination (MMSE)**
SHyper and MMSE

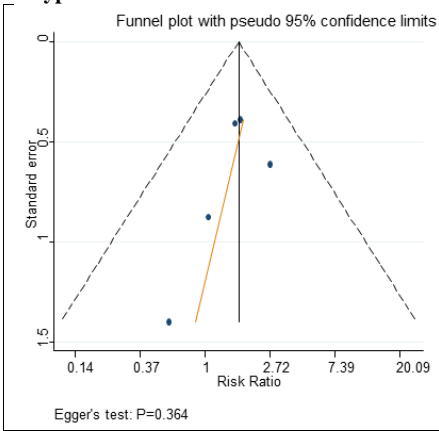


SHypo and MMSE

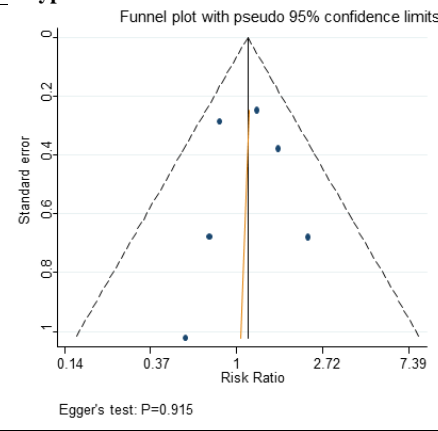


611 **Legend, Supplement Figure 1:** MD = mean difference in change from baseline for MMSE score. MD>0 indicates
 612 higher decline of MMSE in SCTD than in euthyroidism. Abbreviations: 95%CI = 95% confidence interval; MD =
 613 annualized differences in mean change from baseline in MMSE; Euthyroid = euthyroidism; MMSE = Mini-Mental
 614 State Examination; n = number of patients with dementia per group; N = total number of patients per group; SHyper
 615 = subclinical hyperthyroidism; SHypo = subclinical hypothyroidism.

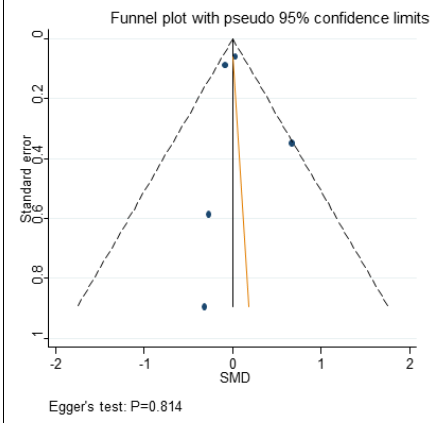
Supplement Figure 2: Funnel Plots and Egger's Tests
SHyper and Dementia



SHypo and Dementia



SHyper and MMSE



SHypo and MMSE

