

This item was submitted to [Loughborough's Research Repository](#) by the author.  
Items in Figshare are protected by copyright, with all rights reserved, unless otherwise indicated.

## Development of novel drug formulation using microfluidic device

PLEASE CITE THE PUBLISHED VERSION

<http://www.ukptforum.org.uk/>

LICENCE

CC BY-NC-ND 4.0

REPOSITORY RECORD

Ekanem, Ekanem E., Yuk Yeung Shiu, Zhandos Tauanov, Lav Sharma, Hamed Shahmohamadi, John V. Henry, Diganta Bhusan Das, and Goran T. Vladisavljevic. 2012. "Development of Novel Drug Formulation Using Microfluidic Device". figshare. <https://hdl.handle.net/2134/10084>.

This item was submitted to Loughborough's Institutional Repository (<https://dspace.lboro.ac.uk/>) by the author and is made available under the following Creative Commons Licence conditions.



**CC creative commons**  
COMMONS DEED

**Attribution-NonCommercial-NoDerivs 2.5**

**You are free:**

- to copy, distribute, display, and perform the work

**Under the following conditions:**

**BY:** **Attribution.** You must attribute the work in the manner specified by the author or licensor.

**Noncommercial.** You may not use this work for commercial purposes.

**No Derivative Works.** You may not alter, transform, or build upon this work.

- For any reuse or distribution, you must make clear to others the license terms of this work.
- Any of these conditions can be waived if you get permission from the copyright holder.

**Your fair use and other rights are in no way affected by the above.**

This is a human-readable summary of the [Legal Code \(the full license\)](#).

[Disclaimer](#) 

For the full text of this licence, please go to:  
<http://creativecommons.org/licenses/by-nc-nd/2.5/>

## 1. Introduction

Biosorbable poly(lactic acid) (PLA) microspheres have been used for controlled drug release, as ultrasound contrast agents, for cell cultivation in tissue engineering, fabrication of scaffolds, composite coatings, etc. Coherent PLA particles can be fabricated via single emulsion route. First, PLA is dissolved in a volatile organic solvent (DCM) and this solution is emulsified in an aqueous surfactant solution. In the next stage, the resultant droplets are solidified by evaporation of solvent. Porous PLA particles can be produced via W/O/W emulsion route, where first, an inner water phase is dispersed in a mixture of PLA and DCM in the presence of oil-soluble surfactant form a W/O emulsion. This emulsion is then dispersed drop-wise into an aqueous surfactant solution to form a W/O/W emulsion. W/O particles are formed by evaporation of DCM.

(a) Single emulsion method



(b) Multiple emulsion method



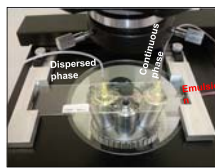
## 2. Emulsion Formulation

Single o/w emulsion method:

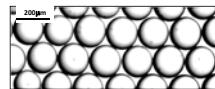
- Continuous phase: 5 wt.% poly(vinyl alcohol) in Milli-Q water
- Dispersed phase: 0.5–3% wt. poly(DL-lactic acid) + trace amounts of Nile red dye in organic solvent (dichloromethane, ethyl acetate, 1:2 chloroform/toluene)

Multiple w/o/w emulsion method:

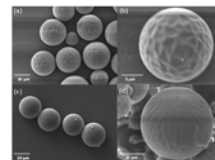
- Outer aqueous phase (a & b): 5 wt.% poly(vinyl alcohol) in Milli-Q water
- Oil phase (a): 10 wt.% PGPR + 1 wt.% PLA + Nile red in DCM
- Inner aqueous phase (a): 20 wt.% Milli-Q water
- Oil phase (b): 10 wt.% PGPR + 1 wt.% PLA + Nile red in 1:2 chloroform/toluene
- Inner aqueous phase (b): 10 wt.% Milli-Q water



Experimental setup



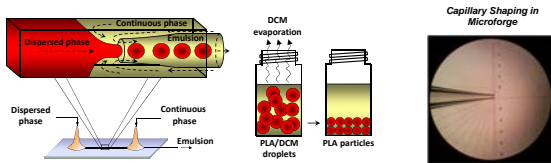
Monodisperse PLA droplets



Monodisperse PLA particles

## 3. Glass Capillary Devices [1]

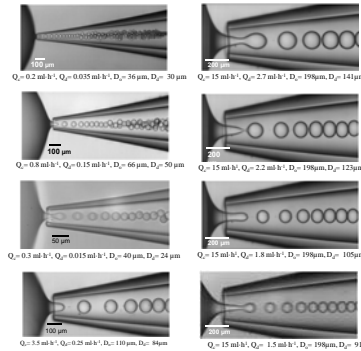
The dispersed and continuous phase were supplied from the two ends of the same square capillary in opposite directions and both liquids were collected through the inner circular capillary. The continuous phase moulds the interface into a cusp, which causes the dispersed phase to break into drops in the tapered section of the collection tube. Taper angle and aperture size of inner capillaries was finely tuned with a micropipette puller and microforge. Capillary tips were treated with a hydrophilic silane to hydrophilise the glass surface uniformly.



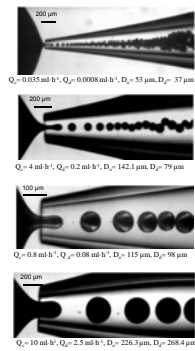
Capillary Shaping in Microforge

## 4. Drop Generation in Glass Capillaries

(a) Single Emulsions

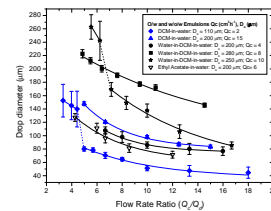
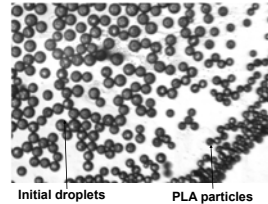
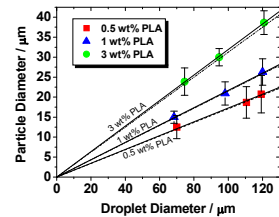


(b) Multiple Emulsions



## 5. Experimental Results

Results show linear relationship between particle and droplet size; gradient increases when PLA concentration is higher. Solid lines represent trend lines; dotted lines are lines corresponding to mass balance equations. Relationship between flow conditions and optimal drop size elucidated.



Reference [1] A.S. Utada et al., Monodisperse double emulsions generated from a microcapillary device, *Science* 308, 537 (2005).

## 6. Conclusions

- > Monodispersed poly(lactic acid) (PLA) particles of 10 to 40 µm have been produced via flow focusing glass capillary devices.
- > The sizes of PLA particles has been accurately controlled with a selection of PLA concentration in DCM (0.5–5 wt.%), orifice size of the injection capillary and fluid flow rates.
- > Further work will investigate drug release profile for these particles.

## 7. Acknowledgement

This work was supported by EPSRC first grant No. EP/HO29923/1