

This item was submitted to [Loughborough's Research Repository](#) by the author.  
Items in Figshare are protected by copyright, with all rights reserved, unless otherwise indicated.

## **Spatial variations in the microbial community structure and diversity of the human foot is associated with the production of odorous volatiles**

PLEASE CITE THE PUBLISHED VERSION

<http://dx.doi.org/10.1093/femsec/fiu018>

PUBLISHER

Oxford University Press © FEMS

VERSION

AM (Accepted Manuscript)

PUBLISHER STATEMENT

This work is made available according to the conditions of the Creative Commons Attribution-NonCommercial-NoDerivatives 4.0 International (CC BY-NC-ND 4.0) licence. Full details of this licence are available at:  
<https://creativecommons.org/licenses/by-nc-nd/4.0/>

LICENCE

CC BY-NC-ND 4.0

REPOSITORY RECORD

Stevens, Deborah, Robert Cornmell, David Taylor, Sally G. Grimshaw, Svetlana Riazanskaia, David S. Arnold, Sara J. Fernstad, et al.. 2019. "Spatial Variations in the Microbial Community Structure and Diversity of the Human Foot Is Associated with the Production of Odorous Volatiles". figshare.  
<https://hdl.handle.net/2134/18359>.

**Spatial variations in the microbial community structure and  
diversity of the human foot is associated with the production of  
odorous volatiles**

Authors; Deborah Stevens<sup>1</sup>, Robert Cornmell<sup>1</sup>, David Taylor<sup>1</sup>, Sally G Grimshaw<sup>1</sup>, Svetlana Riazanskaia<sup>1</sup>, David S Arnold<sup>1</sup>, Sara F Johansson Fernstad<sup>1</sup>, Adrian M Smith<sup>2</sup> Liam M Heaney<sup>3</sup> James C Reynolds<sup>4</sup>, CL Paul Thomas, & Mark Harker<sup>1</sup>

Address; <sup>1</sup>Unilever R&D, Quarry Road East, Port Sunlight, Bebington, UK, CH63 3JW;  
<sup>2</sup>Unilever R&D, Colworth Science Park, Sharnbrook, United Kingdom, MK44 1LQ; <sup>3</sup>School of Sport, Exercise & Health Sciences, Loughborough University, Loughborough, Leics, LE11 3TU, <sup>4</sup>Centre for Analytical Science, Department of Chemistry, Loughborough University, Loughborough, Leics LE11 3TU.

Corresponding author; Mark Harker

Address; Unilever R&D, Port Sunlight, Port Sunlight, Bebington, UK, CH63 3JW

Telephone; +44 151 641 3992

Fax; +44 151 641 1806

E-mail; mark.harker@unilever.com

Key words; isovaleric acid; microbiomics; odour; GC/MS

Running title; Microbial ecology of the foot and its relationship to odour

## 28    **Abstract**

29    The human foot provides an ideal environment for the colonization and growth of bacteria  
30    and subsequently is a body site associated with the liberation of odour. This study aimed to  
31    enumerate and spatially map bacterial populations resident across the foot to understand  
32    any association with odour production. Culture based analysis confirmed that *Staphylococci*  
33    were present in higher numbers than aerobic corynebacteria and Gram positive aerobic  
34    cocci, with all species being present at much higher levels on the plantar sites compared to  
35    dorsal sites. Microbiomic analysis supported these findings demonstrating that  
36    *Staphylococcus* spp. were dominant across different foot sites and comprised almost the  
37    entire bacterial population on the plantar surface. The levels of volatile fatty acids, including  
38    the key foot odour compound isovaleric acid, that contribute to foot odour were significantly  
39    increased at the plantar skin site compared to the dorsal surface. The fact that isovaleric  
40    acid was not detected on the dorsal surface, but was present on the plantar surface is  
41    probably attributable to the high numbers of *Staphylococcus* spp. residing at this site.  
42    Variations in the spatial distribution of these microbes appear to be responsible for the  
43    localised production of odour across the foot.

## Introduction

The commensal microbial flora of human skin represents a diverse and dynamic ecosystem which has evolved to colonise virtually every available habitat both on and within the integumentary system (Malcolm & Hughes, 1980; Roth & James, 1988). This microbial flora varies in number from  $<10$  to  $>10^7$  micro-organisms per square cm (Bojar & Holland, 2002; Marshall *et al.*, 1988). These variations are a consequence of the different environmental, topographical and biochemical conditions encountered between different skin sites and are also a reflection of person-to-person variability (Costello *et al.*, 2009; Leeming *et al.*, 1984). These factors also play a major role in determining the bacterial diversity of the microbial communities that reside at the different body sites (Grice & Segre, 2011). It has been well documented that body sites exhibiting increased temperatures and humidity (i.e. axilla, perineum and foot) support the highest bacterial populations compared to other body sites (Costello *et al.*, 2009; Findley *et al.*, 2013; Grice *et al.*, 2009). These sites have been shown to be preferentially colonised by *Staphylococcus* and *Corynebacterium* spp. (Bojar & Holland, 2002; Taylor *et al.*, 2003) and display reduced levels of bacterial diversity than drier less moist sites (Gao *et al.*, 2007). These bacteria are also the key microbes responsible for the biotransformation of odourless glandular secretions into volatile odorous compounds (James *et al.*, 2013; Natsch *et al.*, 2006; Troccaz *et al.*, 2008).

The human foot provides an ideal environment for the colonization and growth of bacteria, affording high levels of humidity and a rich supply of nutrients. Previous culture and genomic based studies have demonstrated that *Staphylococcus* is the most dominant organism present on the plantar surface of the foot, with *Corynebacterium* also providing a significant contribution. *Micrococcus*, *Propionibacterium*, *Betaproteobacterium* and *Brevibacterium* species also make up a significant contribution to the overall foot microflora in some subjects (Costello *et al.*, 2009; Findley *et al.*, 2013; Grice *et al.*, 2009; Marshall *et al.*, 1987). The spatial distribution of these bacterial populations across the foot has not been studied in any great detail. Eccrine sweat glands are the primary source of foot

secretions and are present on both the plantar and dorsal surface, secreting a primarily aqueous solution containing inorganic electrolytes, free amino acids, lactic acid and urea (Quinton *et al.*, 1999). Unlike most areas of the body, the plantar surface of the feet have no sebaceous glands and also lack apocrine glands which are associated with odour production in the axilla. One of the chief consequences of this high microbial load is the production of an unpleasant odour which has a distinct cheesy/acidic note (James *et al.*, 2013). Previous work has demonstrated that this odour emanates from the bacterial biotransformation of branched-chain amino acids, such as leucine and valine into volatile fatty acids (VFA's), in particular isovaleric acid (Ara *et al.*, 2006; Kanda *et al.*, 1990). The branched-chain amino acids are liberated *via* the degradation of the exfoliated layers of the stratum corneum under the influence of extra-cellular bacterial proteases (Holland *et al.*, 1990). Alternatively, they originate as a soluble component of the secreted eccrine sweat (Ara *et al.*, 2006; Harker & Harding, 2012). The key causative bacteria responsible for this biotransformation on the foot are *Staphylococcus* spp., but some species of *Brevibacterium*, *Micrococcus* and *Kytococcus* are biochemically competent at converting branched-chain amino acids to VFA's (Ara *et al.*, 2006; James *et al.*, 2013).

Although the key chemical components of foot odour have been identified, in the majority of the published studies the analytical approaches adopted did not directly sample the headspace above the foot. In most instances the odorous volatile components were identified through either chemical modification of liquid extracts obtained from the foot; or by incubating liquid extracts from the foot with foot derived bacterial isolates (Ara *et al.*, 2006; Caroprese *et al.*, 2009; James *et al.*, 2013; Kanda *et al.*, 1990). The application of such methods does not fully resolve the question of the exact chemical identity of the volatile components responsible for the generation of foot odour. In this study we sought to enumerate and spatially map the key bacteria resident across the foot. We then obtained diversity profiles of the foot microflora at two different sites to investigate how this influenced the VFA profiles across the dorsal and plantar surfaces under controlled conditions.

## 99    **Materials & Methods**

100

### 101    **Subjects**

102    These studies were conducted in accordance with the ethical principles of Good Clinical  
103    Practice and the Declaration of Helsinki. Ethics committee approval was sought before  
104    commencement of the studies and all subjects gave written informed consent. Subjects  
105    recruited for the various studies were aged between 21 to 65 years old and in good general  
106    health (BMI 19.8 to 35.0).

107

### 108    **Microbiological sampling, isolation and enumeration of bacteria**

109    Sixteen subjects (8 females and 8 males) were microbiologically sampled by the standard  
110    Williamson and Kligman technique (Williamson & Kligman, 1965) from the foot surface 24  
111    hrs after undertaking a controlled foot wash. Subjects refrained from washing their feet or  
112    applying any foot products for the intervening 24 hrs prior to microbiological sampling. They  
113    were requested to wear test centre supplied socks for the duration of the study. The  
114    microbiological sampling procedure was performed eight times on each foot on adjacent  
115    areas with four samples taken from the plantar surface and four samples from the dorsal  
116    surface of the foot (for exact locations see Fig. S1). The four dorsal sites sampled comprised  
117    of two adjacent sites on the forefoot nearest to the toe web space in line with the first and  
118    third toe clefts, and 2 sites closely located further up the dorsal surface one near to the hind-  
119    foot and one closer to the mid-foot labelled as sites A, B, C and D, respectively. Similarly,  
120    four sites were sampled on the plantar surface two adjacent sites one on the ball of the big  
121    toe and one from the plantar heel and an adjacent site towards the mid-foot plantar arch  
122    labelled as sites E, F, G and H, respectively. Samples were taken by standardised  
123    scrubbing using a sterile sampling fluid (75 mM sodium phosphate buffer, 0.1 % Triton X-  
124    100, pH 7.9).

Collected samples were plated on three different types of media; a, aerobic coryneform medium with phosphomycin (ACP) (Taylor *et al.*, 2003) for the enumeration of aerobic *Corynebacterium* spp.; b, *Staphylococcus* selective medium (SS) (Marshall *et al.*, 1987; Schleifer & Kloos, 1975) for the enumeration of aerobic *Staphylococcus* spp.; c, fastidious anaerobic agar containing novobiocin (FaNov) (46 mg mL<sup>-1</sup> Fastidious anaerobe agar (LabM), 3 mg mL<sup>-1</sup> yeast extract, 5 mg mL<sup>-1</sup> Tween 80, 50 µl mL<sup>-1</sup> defibrinated horse blood (Oxoid), 10 µg mL<sup>-1</sup> Novobiocin (Oxoid)) for the enumeration of Gram-positive anaerobic cocci (GPAC). This medium is designed to facilitate the growth of GPAC microbes and inhibit the growth of facultative anaerobic staphylococci, anaerobic corynebacteria and anaerobic propionibacteria. Samples were spiral plated with either neat inoculums or diluted 10<sup>-2</sup> (Don Whitley Scientific) onto each selective medium and incubated at 37 °C for 2 days for the aerobic bacteria. The anaerobic bacteria were incubated at 37 °C for 7 days in an anaerobic chamber supplied with a gas mix of 80 % (v/v) nitrogen, 10 % (v/v) carbon dioxide and 10 % (v/v) hydrogen. After incubation, plates were selected for each medium type with an estimated count of between 30 to 300 colonies. The plates were enumerated using the Protocol2 colony counter (Synbiosis) and data presented as colony forming units per millilitre sample (cfu mL<sup>-1</sup>).

### **Statistical analysis**

Data from the Protocol2 was converted to log colony forming units per square centimetre of skin (log<sub>10</sub> cfu cm<sup>-2</sup> skin). Data was analysed using the statistical package JMP using the 'Fit Model'. The minimum detectable number of bacteria for the method used is 5 cfu mL<sup>-1</sup> (which equates to 0.72 log<sub>10</sub> cfu cm<sup>-2</sup>). In cases where no bacterial colonies were recovered values provided are 0.42 log<sub>10</sub> cfu cm<sup>-2</sup> generated from an artificially provided value of 2.5 cfu mL<sup>-1</sup> bacteria.

## **Microbiomic sampling, DNA extraction, sample preparation and sequence processing**

Ten subjects (5 females and 5 males) were microbiologically sampled by the standard Williamson and Kligman technique (Williamson & Kligman, 1965) from the foot surface 24 hrs after undertaking a controlled foot wash. Subjects refrained from washing their feet or applying any foot products for the intervening 24 hrs prior to microbiological sampling. They were requested to wear test centre supplied socks for the duration of the study. The microbiomics sampling procedure was performed twice times on either the left or right foot with one sample taken from the plantar surface (site E) and the other sample from the dorsal surface (site B) (Fig. S1). The DNA extraction, PCR amplification and subsequent analysis was performed as previously published (Harker *et al.*, 2014) with certain alterations to the protocol. Twenty buffer scrub samples (50 mM Tris-HCl + 0.1 % v/v Triton-X100, pH 7.9) were concentrated by centrifugation at 13,200 rpm for 20 min, the supernatant was removed, and the cells resuspended in 500 µL Tris-EDTA (TE) buffer (10 mM Tris-HCl; 1 mM EDTA, pH 7.4 ), in a Pathogen Lysis L tube (Qiagen). A negative control sample of the same buffer used for sampling was included in the extraction and PCR amplification steps. Cell lysis of the buffer samples was carried out by adding 3 µL Epicentre® Ready-Lyse lysozyme (250 U/µL) and incubating the cell suspension with agitation of 300 rpm at 37 °C for 18 h, followed by bead beating at 6.5 m/s for 2 x 45 seconds, with 5 minutes rest between bursts (on ice), using the FastPrep 24 machine (MPBiomedicals). Samples were placed on the QIASymphony DNA extraction robot and DNA extracted as per the manufacturer's instructions using the Virus/Pathogen DNA extraction kit (Qiagen).

Three primers pairs (27f/338r, 8f/1391r & 515f/1061r) targeting different regions of the 16S rRNA gene were evaluated *in-silico* using the open-source software tool PrimerProspector v1.0.1 (Walters *et al.*, 2011) and the Silva database. The primer pair 515f/1061r predicted 100 % taxonomic coverage across 23,441 bacterial sequences including the phyla Actinobacteria (most dominant reported genera: *Corynebacterium* and *Propionibacterium*) and Firmicutes (majorly represented by *Staphylococcus* spp.), and was



selected for this study (Fig S2). The forward primer contained the 454 Life Sciences adaptor A, the primer key "TCAG", a unique 12 base pairs (bp) error-correcting Golay code (Hamady *et al.*, 2008), was used to tag each PCR product, and the bacterial primer 515f (Marcille *et al.*, 2002; Meyer *et al.*, 2004)]. The reverse primer contained the 454 Life Sciences adaptor B, the primer key "TCAG", and the bacterial primer 1061r (Andersson *et al.*, 2008). Quantitative PCR (qPCR) amplification was carried out on each sample to quantify the DNA and to determine the number of PCR cycles required to reach the sub-plateau phase of amplification. It has been reported that elevated cycle number increases the potential for the generation of chimeras, which can result in the overestimation of microbial community diversity (Farrelly *et al.*, 1995; Gonzalez *et al.*, 2005). Reactions consisted of 2  $\mu$ L (5  $\mu$ M) of each forward and reverse primer, 10  $\mu$ L of Rotor-Gene SYBR Green Mastermix (Qiagen), 3  $\mu$ L of template DNA and 3  $\mu$ L molecular grade water (Qiagen). Samples were amplified using the following parameters: 95 °C for 5 min, 40 cycles of; 95 °C for 45 s, 65 °C for 30 s, and 72 °C for 90 s, with a final extension of 10 min at 72 °C. To minimize PCR amplification bias, samples were grouped by the cycle number required to reach the late exponential phase of the amplification curve, as determined by the qPCR step, resulting in 4 PCR runs of between 18 to 37 cycles.

The 16S rRNA amplification consisted of 2  $\mu$ L (5  $\mu$ M) of each forward and reverse primer, 10  $\mu$ L of HotStarTaq Plus Mastermix (Qiagen), 3  $\mu$ L of template DNA and 3  $\mu$ L molecular grade water (Qiagen). The samples were amplified in triplicate using the following parameters: 95 °C for 5 min, either 18, 23, 30 or 37 cycles of; 95 °C for 45 s, 65 °C for 30 s, and 72 °C for 90 s, with a final extension of 10 min at 72 °C. The replicate PCR amplicons from each sample were pooled and purified using the Qiaquick PCR purification kit with the QIAcube robot (Qiagen) as per the manufacturer's instructions. The DNA of each sample was quantified by using Quant-IT Broad Range dsDNA kit (Invitrogen), and a composite sample for pyrosequencing was prepared by pooling equal amounts of PCR amplicon from each sample. The QIAgility liquid handling robot (Qiagen) was used to prepare samples for PCR, pooling and DNA quantification.

The composite sample was sent to the Centre for Genomics Research (CGR) at Liverpool University for pyrosequencing on the Genome Sequencer FLX (Roche/454 Life Sciences). The pooled amplicons were checked on an Agilent Bioanalyzer DNA HS chip for the absence of primer-dimers, and quantitated using the Qubit® dsDNA HS Assay Kit, with the Qubit® 2.0 Fluorometer (Invitrogen). The amplicon library with an average size of 640 bp was diluted to  $1 \times 10^7$  molecules/ $\mu$ L. Emulsion PCR was set up according to Roche's recommendations. Following emulsion PCR enrichment, beads produced were deposited into 2-region gasket format wells of a Titanium Series PicoTiterPlate device. Sequencing was performed using the GS FLX Titanium Sequencing Kit XLR70, on the GS FLX instrument according to the manufacturer's recommendations (Roche/454 Life Sciences, Branford, CT). Image analysis, shotgun signal processing, and base calling were performed using the supplied system software (version 2.6). The Standard Flowgram Format (sff) files output from base calling were employed in subsequent analysis. The resulting flowgrams were processed using the AmpliconNoise algorithm (Quince *et al.*, 2011), to remove inherent noise in the data which has been shown previously to drastically over-estimate true levels of  $\alpha$ -diversity (Quince *et al.*, 2009). Chimeras were removed using the AmpliconNoise associated Perseus algorithm, and the resulting denoised sequences were clustered into Operational Taxonomic Units (OTUs) at the 3 % level. OTUs were taxonomically assigned using the Ribosomal Database Project (RDP) Classifier version 2.2 (Wang *et al.*, 2007) accessed via *QIIME PIPELINE version 1.5.0* (Quantitative Insights into Microbial Ecology), an open source software package for analysis of microbial communities (Caporaso *et al.*, 2010)..

## **Microbial Diversity**

$\alpha$ -diversity was measured using Renyi Entropy, which employs a generalisation of a number of information theoretic measures. This allows the estimation of diversity across abundance levels from rare species to the most abundant. One community can be regarded as more diverse than the other if its Renyi diversity is higher across all abundance levels (Mecklin,

2004).  $\beta$ -diversity between communities was measured using the weighted UniFrac distance and illustrated on a two dimensional plot produced from a principal coordinate analysis performed in QIIME (Caporaso *et al.*, 2010). The mean  $\beta$ -diversity was confirmed using permutation ANOVA (Anderson, 2001).

### **Comparative Testing**

A comparison of taxonomic differences in the mean relative abundance of taxa can be modelled using a Multinomial sampling model. However, due to the very sparse nature of the data which may lead to over dispersion, a Dirichlet-Multinomial sampling model was used to provide a better fit to the data. The statistical hypothesis testing was performed using the vegan: Community Ecology Package (Vegan: Community Ecology Package. R package version 2.0-10. <http://CRAN.R-project.org/package=vegan>).

### **Data Visualisation**

The primary visualisation technique employed involves using colour coded tables, commonly known as heatmaps. They provide a visual overview of distribution within various data analysis contexts. Here, an in-house heatmap was used to analyse the differences and similarities of sample groups in the context of microbial distribution within samples, based on the relative abundance of microbes. This includes microbes that comprise 97% of the total microbial population represented by their taxonomic classification and ordered based on relative sample abundances with the most abundant microbes at the top. Samples were ordered by clustering using the Bray-Curtis dissimilarity matrix. To highlight subtler differences in low and medium abundance cells, a logarithmically scaled colouring was used where black represent cells with no abundance, blue to light yellow represent cells with low to medium abundance and light yellow to red represent cells with medium to high abundance.

### **Nucleotide Sequence Accession Number**

The raw sequences reported in this paper have been deposited in the NCBI BioProject database, Accession no. PRJNA263008.

#### **Volatile organic compound (VOC) analysis**

Ten subjects (4 female and 6 male) undertook a controlled wash of each foot and were provided with a clean pair of socks. Subjects refrained from washing their feet or applying any foot products, after 24 hrs subjects were provided with another clean pair of socks to wear, such that test centre supplied socks were worn continuously 48 hrs prior to sampling. On the day of sampling participants were instructed to fast and avoid drinking anything other than water until the samples were taken. Conditioned polydimethylsilicone (PDMS) membrane patches (Goodfellow Ltd, Cambridge, P/N Si303045), were placed onto the dorsal (Site B) and plantar (Site E) surfaces of the foot (Fig. S1), an unscented cotton wool pad (that had previously been conditioned by vacuum polishing at 75 °C wrapped in foil for 12 hours) was placed on top of the skin patch and then secured in place using microporous tape. Patches remained on the foot for 30 min whereupon they were removed with a clean pair of tweezers and placed back in the corresponding 1 cm Tenax® thermal desorption tube (Markes International). The tube fittings were then tightened and the tube was stored at 4 °C prior to gas chromatography-mass spectrometry (GC-MS) analysis. Field blanks were taken by placing a conditioned patch between 2 cotton wool pads and sealing them together with microporous tape. This was left in the room while sampling took place for 30 min before returning it to a thermal desorption tube and storing at 4 °C.

#### **Skin patch thermal desorption tube preparation**

All samples were collected using PDMS skin patches (Goodfellow Ltd, Cambridge, P/N Si303045), tubes and patches were prepared using the method as previously described (Martin *et al.*, 2012; Riazanskaia *et al.*, 2008). The skin patches were subject to 3

consecutive methanol washes, with 10 min in an ultra-sonic bath at 30 °C for each wash. After cleaning the patches were conditioned at 185 °C and a pressure <1 mbar for no less than 15 hrs. Once conditioned the tubes were immediately capped and stored in an airtight box at 4 °C. Prior to use the skin sampling-patches were thermally desorbed to establish that any residues of VOC's within them were at acceptable levels and to further "polish" the patch prior to sampling. Each tube was spiked with 0.2 µL of 20 ng µL<sup>-1</sup> toluene-D8 solution (4 ng total loading) while skin sampling took place. This was accomplished using a Markes International tube loading device operating at 100 mL<sup>-1</sup> min for 1 min.

### **Thermal desorption GC-MS**

All analyses were performed using a VG Trio 1 mass spectrometer combined with a HP5890 GC system and a Markes UNITY 2 thermal desorption unit. Samples were analysed using the thermal desorption method as previously reported (Martin *et al.*,2012). The resolution conditions and mass spectrometer parameters are summarised in supplementary Table S1. A sulphur cold trap was utilised in the Markes UNITY 2(PN: U-T6SUL-2S) for the duration of this experiment to give enhanced retention of low Mw volatile fatty acids (VFA's). Eight *m/z* ratios were monitored during sample analysis. Specific retention times of VOC's of interest are provided in supplementary Table S2 alongside the respective target ion *m/z* ratios used for detection of each of these individual metabolites.

Quantification of target VOC's was facilitated by the construction of calibration curves of authentic standards of the reference compounds. Standard graphs were obtained for 9 of the VFAs acetic, 2-methylbutyric, 4-methylvaleric, butyric, hexanoic, isobutyric, isovaleric, propionic and valeric acid, respectively. Standards were prepared as v/v mixtures in acetonitrile, at a range between 156.25 pg/µL to 10 ng/µL. Tubes used in quantification were firstly spiked with 4 ng of toluene-D<sub>8</sub> and then 1 µL of the standard solution was spiked directly on to the skin patch prior to thermal desorption GC-MS analysis. The linearity of

each calibration curve was determined by plotting the peak area of each compound at a minimum of four different concentrations vs. detector response.

The lower limit of quantification is defined as the lowest concentration on the calibration curve with an acceptable accuracy (relative error, RE) within  $\pm 20\%$  and a precision (relative standard deviation, RSD) below 20 %. The standard calibration curves for each VOC were linear over the concentration range of 312.5 pg/ $\mu$ L to 5 ng/ $\mu$ L ( $r^2 \geq 0.99$  to 0.97). Dilution of the VOC's to 156.25 pg/ $\mu$ L was shown to be below the experimental limit of detection for all 10 VFA's measured.

## **Statistical analysis**

Quantitative data were expressed as means with standard deviations. Statistical comparisons were performed using the two-sided paired t-test. A  $P$  value  $< 0.05$  was considered significant.

## **Results**

### **Microbiological mapping of commensal bacteria on the foot**

The feet of 8 female and 8 male panellists were sampled 24 hours after a controlled wash from 8 different sites on each foot. Bacterial enumeration *via* culture dependent methods of samples obtained from different sites on the foot, revealed significant differences in the numbers of commensal bacteria observed on each media between the dorsal and plantar surfaces of the foot as presented (Fig. 1). Plantar sites E and F (the ball of the foot) had significantly higher mean log counts than G and H (the heel of the foot). However, in the case of GPAC sites F and G were not significantly different from each other. There was a significant difference between site A (dorsal, near the big toe) and the other dorsal sites for staphylococci ( $p=0.004$ ), for corynebacteria these differences were non-significant ( $p=0.07$ ). No significant differences existed between the other dorsal sites for any organism. Sites G

and H (plantar heel) exhibited significantly higher bacterial numbers than all the dorsal sites A-D ( $p < 0.0001$ ). The difference was most pronounced for staphylococci and then corynebacteria but it was also significant for the anaerobes ( $p < 0.0001$ ). *Staphylococcus* spp. bacteria were isolated in high numbers from all panellists whereas aerobic corynebacteria and GPAC were much lower in number and were not isolated from a large proportion of samples. The culture based data demonstrates the relative numbers of each organism within the bacterial population of the foot with *Staphylococcus* spp. making the largest contribution to the microbial community, with the next largest contribution made by *Corynebacterium* spp. and the smallest contribution being made by the GPAC organisms (Fig. 1).

Figure 2 depicts contour plots of the bacterial enumeration data across all the sites for each media type and coloured by gender. To illustrate, dense red indicates  $\log_{10}$  counts that are exhibited by a high proportion of the male population, e.g. for total staphylococci, site E (plantar, ball of foot) for the male sample has high numbers of subjects whose  $\log_{10}$  counts are ~6-7. Although the adjusted mean log counts were slightly higher for the female samples than for the males, for all organisms at all sites these differences were not statistically significant across gender. The only exception was for GPAC numbers at sites E and F demonstrating significantly greater  $\log_{10}$  cfu  $\text{cm}^{-2}$  in female subjects. Other than this one example there are distinct areas of overlap within the bacterial enumerations on each media type at each site between males and females.

## Microbiomic analysis of the human foot

We obtained 201,136 raw sequences of which 16,898 sequences were not assignable to a specific sample due to errors in barcodes or primer sequence. A further 41,699 sequences were removed during additional denoising and chimera checks, leaving 142,539 sequences for downstream analysis with an average length of 392 base pairs (min 220, max 400). The number of sequences for each sample varied from 306 to 65805 (Table S3). No sequences

were obtained from the negative control as insufficient DNA was generated from PCR to warrant sequencing. Figure 3 illustrates the individual (and mean Fig S3) relative abundance of the major bacterial genera obtained from either the dorsal or plantar surfaces of the foot. This data indicates an increase in the relative diversity of the dorsal surface compared to the homogenous nature of the plantar surface, with *Staphylococcus* spp. the only statistically significantly genus enriched at the plantar surface and making up 98.6% of the total plantar skin microbiome. On the dorsal surface *Staphylococcus* spp. are still the dominant organisms but to a much lesser degree (26.9%) compared to the plantar surface, with *Corynebacterium* spp. (12.1%) the second most abundant organisms, indicating that the remaining ~60% of bacteria present represent a diverse range of cutaneous commensals. Twelve genera were significantly enriched at the dorsal sites with a relative abundance of between 0.10 to 12.10%, including *Corynebacterium* (12.1%), *Enhydrobacter* (6.5%), *Chryseobacterium* (6.0%) and *Micrococcus* (5.5%) and the GPACs, *Peptinophilus* (0.6%) and *Fingoldia* (0.5%). *Kytococcus* and *Brevibacterium*, genera previously implicated in foot malodour were present in low relative abundance at both plantar (0.10%, 0.22%, respectively) and dorsal (0.02%, 0.06%, respectively) sites. Table S4 provides a list of the genera showing evidence of statistically significant differences between the mean relative abundance on the dorsal and plantar surfaces.

The heatmap visualisation of classified genera reveals cluster patterns based on the genera present at the plantar and dorsal sites (Fig. 4). Samples were seen to cluster into two groups, based on the Bray-Curtis distance, indicating a high degree of dissimilarity. Most samples clustered according to their site, however the plantar sample from subject 8 clustered with the dorsal samples (highlighted in green), indicating that this sample shares a more similar microbial community structure with this site. The ability to measure the diversity within a site ( $\alpha$ -diversity) allows a greater understanding of the differences in bacterial populations at those sample sites. The  $\alpha$ -diversity was examined by generating diversity profiles using Renyi entropy (Mecklin, 2004). Figure S4 compares the  $\alpha$ -diversity of



the dorsal and plantar sites of the foot confirming that diversity at the dorsal site is significantly greater than the plantar across all levels of taxonomic abundance. Analysis of the diversity between the bacterial communities of different sites ( $\beta$ -diversity) shows clustering of the plantar samples with the exception of the plantar sample from subject 8, which clusters with the dorsal samples (Fig. S5) and confirms the previous observations (Fig. S4). Analysis of these weighted UniFrac distances using permutation ANOVA revealed a statistically significant difference in mean diversity between plantar and dorsal sites ( $\text{Pr}( > F ) = < 0.001$ ). No evidence of a difference was observed for gender ( $\text{Pr}( > F ) = 0.56$ ). Due to uneven read distribution among two samples (3P & 6P) these were removed from a subsequent analysis. Removal of these samples did not cause a significant shift in community  $\alpha$  or  $\beta$ -diversity measurement (Fig. S4 & Fig. S5).

#### **Analysis of volatile fatty acids by thermal desorption-GC-MS of skin patches sampling different sites on the foot**

The volatile fatty acid quantification from the dorsal and plantar surfaces from 10 subjects are provided in Table 1. This data demonstrates significant increases of specific volatiles symptomatic of foot odour on the plantar surface when compared with the lower concentrations detected from the dorsal region i.e. acetic, butyric and valeric acid. Even more pronounced is the complete absence of the highly odiferous volatile isovaleric acid from the dorsal surface, whereas in contrast this key foot odorant is readily detected on the plantar surface. This data indicates VOC's responsible for foot malodour to be more prevalent and abundant on the sole of the foot especially in the case of isovaleric acid which was never observed in samples obtained from the dorsal surface. Figure 5 illustrates representative chromatograms of PDMS skin patches derived from the dorsal and plantar surfaces of the same male volunteer (subject 5), showing increases in hexanoic and valeric acid and the appearance of isovaleric acid in the skin patch from the plantar sample compared to the dorsal sample.

## Discussion

The results obtained in the present study are similar to those reported previously. Staphylococci were isolated from every foot at almost every site. In total, staphylococci were prevalent in 93.3% of all foot samples. Aerobic corynebacteria were isolated from 86.9% of all samples. The prevalence of bacteria was lower from dorsal surfaces than plantar surfaces for all bacterial types. Staphylococci were present in 96.8% plantar samples compared to 89.6% dorsal samples. Corynebacteria were isolated from 95.3% plantar samples and 78.4% dorsal samples. GPAC were isolated from 90.6% plantar sample and only 68.3% dorsal samples. The prevalence of staphylococci and aerobic corynebacteria was 100% and 98.3% from the dorsal and 100% and 96.6%, respectively in the population sampled previously (Marshall *et al.*, 1987). GPAC's were isolated from 79.8% of all samples, which is considerably higher than previously reported levels of 6.7% from both plantar and dorsal surfaces (Marshall *et al.*, 1987).

Staphylococci were present in higher numbers than aerobic corynebacteria and GPAC. The population density of staphylococci ranged from 4 to 5 log<sub>10</sub> cfu/cm<sup>2</sup> on the plantar sites and was approximately 2.0 log<sub>10</sub> cfu/cm<sup>2</sup> on the dorsal surface of the foot, similar to those reported previously. The mean population densities of staphylococci from a study involving 30 males and 30 females were 5.48 and 2.54 log<sub>10</sub> cfu/cm<sup>2</sup> for the plantar and dorsal surfaces respectively (Marshall *et al.*, 1987). In another study of 19 males, the mean population density of staphylococci from the plantar surface was 5.94 log<sub>10</sub> cfu/cm<sup>2</sup>, of the 19 feet studied, 17 had microflora dominated by staphylococci (Marshall *et al.*, 1988). Similarly, the counts obtained for aerobic corynebacteria were also higher from the plantar sites (2.5 to 4.0 log<sub>10</sub> cfu/cm<sup>2</sup>) than the dorsal sites (1.5 to 2.0 log<sub>10</sub> cfu/cm<sup>2</sup>). Again, this reflects previous data where a study of 30 males and 30 females recovered 4.21 log<sub>10</sub>

cfu/cm<sup>2</sup> corynebacteria from the plantar and 2.4 log<sub>10</sub> cfu/cm<sup>2</sup> corynebacteria from the dorsal surfaces (Marshall *et al.*, 1987). A study of 19 males also yielded a mean bacterial density from the plantar surface of 4.92 log<sub>10</sub> cfu/cm<sup>2</sup> corynebacteria (Marshall *et al.*, 1988). The mean counts for GPAC were 1.0 and 1.0 to 2.0 log<sub>10</sub> cfu/cm<sup>2</sup> for the dorsal and plantar surfaces, respectively. Previous work demonstrated higher counts for GPACs on the dorsal than the plantar surface but these were in the range of 0.86 to 2.25 log<sub>10</sub> cfu/cm<sup>2</sup> (Marshall *et al.*, 1987). The inter-toe web space is reported to sustain the highest microbial populations on the foot, however, due to the absence of a suitable sampling method (i.e. ability to sample bacteria per unit area) this site was not evaluated in the present study.

The dominance of *Staphylococcus* spp. across different foot sites was also supported by the microbiomic analysis, which highlighted the fact that staphylococci comprised almost the entire bacterial population on the plantar surface. This rather extreme finding has not been reported previously across an entire study population but has been noted in isolated individuals in previous studies (Costello *et al.*, 2009; Findley *et al.*, 2013; Grice *et al.*, 2009). This finding is potentially a consequence of the stringent subject restrictions imposed during the course of the study, resulting in a very homologous microbial composition residing on the plantar surface. This is a novel finding as previous studies investigating the microbial composition of the plantar surface of the foot have not included such clear instructions for subject adherence, in terms of bathing and the type of foot wear to be worn throughout the course of the study. This has resulted in much higher levels of bacterial diversity being reported on the plantar surface (Costello *et al.*, 2009; Findley *et al.*, 2013; Grice *et al.*, 2009). This imposition of a relatively uniform external environment across subjects indicates that host factors do not contribute significantly to increasing bacterial diversity at this site (Grice & Segre, 2011).

In general genomic approaches to characterize skin bacteria have revealed a much greater diversity of organisms than that revealed by culture-based methods (Grice & Segre, 2011). However, genomic approaches to characterize skin bacteria on the foot have not drastically changed our understanding of the microbiota of this site. The available

microbiomic data available for feet demonstrates that *Staphylococcus* is the most dominant organism present on the plantar surface of the foot with *Corynebacterium* spp. also providing a significant contribution (Costello *et al.*, 2009; Findley *et al.*, 2013; Grice *et al.*, 2009). Data from the present study supports the former but not the latter conclusion. The inter toe web space has been shown to display a relatively low bacterial diversity, being dominated by *Staphylococcus* and/or *Corynebacterium* spp. with *Betaproteobacteria* making a significant contribution in some individuals (Findley *et al.*, 2013; Grice *et al.*, 2009).

This is the first study to directly compare the bacterial diversity of the plantar and dorsal surfaces. Although the prevailing environmental conditions on both surfaces can be considered similar i.e. high levels of moisture and high temperature, these surfaces support vastly different microbial populations both in terms of composition and number. The dorsal surface of the foot is known to produce more than twice as much sweat as the plantar surface,(Fogarty *et al.*, 2007; Smith & Havenith, 2011; Taylor *et al.*, 2006) whereas plantar skin displays a thickened stratum corneum, (Kim *et al.*, 2010) a reduced lipid content, (Egelrud & Lundstrom, 1991)contains one of the highest sweat gland densities found on the human body ( $620 \pm 120$  glands  $\text{cm}^{-2}$ ) (Szabo, 1962) and is subject to increased mechanical stress (Kim *et al.*, 2010). Which if any of these factors is responsible for the stark differences in microbial numbers and diversity between these two sites remains to be established, although superficially not drastically different, the intrinsic subtleties between these two sites appear to be responsible for causing radical differences in the skin microbiota at these two sites. Of particular importance may be the low levels of extracellular lipids available to sustain the growth of *Corynebacteria* spp. Many *Corynebacterium* spp. are known to be lipid-dependent as they lack the necessary fatty acid synthase gene essential for lipid biosynthesis, rendering these microbes dependent on their host for a supply of lipids to sustain growth (Tauch *et al.*, 2005). Therefore, a lack of available lipid on the plantar surface may be one reason why these bacteria are unable to effectively colonise this site, particularly since this bacterium is unable to utilize glucose or acetate as its sole carbon source.

Foot malodour has a distinct cheesy, acidic note that has been attributed to VFA's, and, in particular, to isovaleric acid (Ara *et al.*, 2006; Caroprese *et al.*, 2009). *Staphylococcus* spp. isolated from the human foot have been shown to convert branched aliphatic amino acids, such as L-leucine, to short-chain methyl-branched VFA's, including isovaleric acid (James *et al.*, 2013). Isovaleric acid was detected in the plantar skin patches of 8 subjects but was not detected in measurable quantities in any of the dorsal samples. The fact that isovaleric acid was not detected on any skin patches obtained from the dorsal surface, but was present on the plantar surface is almost certainly attributable to the high numbers of *Staphylococcus* spp. residing at this site. Although staphylococci were present on the dorsal surface it would appear that there were insufficient numbers to produce detectable levels of isovaleric acid. The levels of other VFA's that contribute to foot odour (Ara *et al.*, 2006; Caroprese *et al.*, 2009; Kanda *et al.*, 1990) were also significantly increased on the plantar skin patches compared to those obtained from the dorsal surface, indicating that staphylococci may play a major role in the generation of these acids also. The skin patch data supports the notion that high numbers of bacteria, in particular *Staphylococcus* spp., are implicated in the production of foot odour. Variations in the spatial distribution of these microbes appear to be responsible for the localised production of odour across the foot, a notion put forward previously but until now not verified (James *et al.*, 2013).

One particular bacterium that has been linked with the generation of foot malodour is *Kytococcus sedentarius* (Marshall *et al.*, 1988). Strains of *K. sedentarius* isolated from normal feet are capable of efficiently degrading callus, which is mainly composed of keratin protein, into soluble peptides and free amino acids, which may then serve as direct substrates for malodour formation (Holland *et al.*, 1990). The data obtained in the current study suggests that *K. sedentarius* is not particularly prevalent on the plantar surface of the foot (20%) and that the generation of VFA's responsible for foot odour are not dependent on its presence. Whether or not this bacterium is associated with extremes of foot odour is open to question, what is clear though is that the generation of appreciable levels of odorous

VFA's can be accomplished in its absence. The absence of large numbers of certain bacteria implicated in the production of foot odour such as *K. sedentarius*, *Brevibacterium* and *Micrococcus* is in agreement with previous studies that have investigated the foot microbiome (Grice *et al.*, 2009; Findley *et al.*, 2013) and is not considered to be an experimental artefact given the extensive taxonomic coverage of the approach adopted.

The intensity of foot malodour would appear to be associated with an increase in the total microbial load, along with elevated skin pH and minor pitting of the stratum corneum (Marshall *et al.*, 1988). Elevated hydration levels, as a consequence of the use of occlusive footwear and/or high environmental temperatures, lead to an increase in microbial numbers, particularly *Staphylococcus* spp. Under these conditions the combination of increasing levels of eccrine sweat (Harker & Harding, 2012) and callus-degrading activity by the foot microbiota (Holland *et al.*, 1990), leads to the liberation of high levels of peptides and amino acids which, in turn, serve as substrates for the production of malodour. Due to differences in the spatial distribution of the microbial population across the foot the plantar surface is a major site of malodour production. Given the high microbial load and propensity of *Staphylococcus* spp. to colonise this site it is also expected that the inter-toe web space is an important site for malodour production on the foot.

Further studies should seek to establish more direct relationships between the foot microbiota and the generation of odorous volatiles. Current sampling techniques prevent the direct sampling of the same skin sites for both microbial and volatile analysis. The development of more discreet and/or less invasive sampling strategies should remedy this issue and facilitate the direct statistical comparison of microbial and VOC datasets. It is clear from the current work that high numbers of *Staphylococcus* spp. are correlated with the production of isovaleric acid and increases in the levels of other odorous acids. Nevertheless, parallel integrated sampling would facilitate greater statistical scrutiny of such datasets and potentially help identify new causative organisms involved in foot odour production.

## Acknowledgements

The authors would like to thank Dr. Gordon James and Dr Barry Murphy for critical review of this manuscript. We also thank Prof. Neil Hall and the Centre for Genomics Research (CGR), Liverpool, UK for help with pyrosequencing of the bacterial samples. Finally, we thank all subjects for their cooperation and participation in this study.

## Conflict of Interest

The authors declare no conflicts of interest

## References

- Anderson MJ (2001) A new method for non-parametric multivariate analysis of variance. *Austral Ecol* **26**: 32-46.
- Andersson AF, Lindberg M, Jakobsson H, Bäckhed F, Nyrén P & Engstrand L (2008). Comparative analysis of human gut microbiota by barcoded pyrosequencing. *PLoSOne* 3: e2836.
- Ara K, Hama M, Akiba S, Koike K, Okisaka K, Hagura T, Kamiya T & Tomita F (2006) Foot odor due to microbial metabolism and its control. *Can J Microb* **52**: 357-364.
- Bojar RA & Holland KT (2002) Review: The human cutaneous microflora and factors controlling colonisation. *World J Microb Biot* **18**: 889-903.
- Caporaso JG, Kuczynski J, Stombaugh J, Bittinger K, Bushman FD, Costello EK, Fierer N, Pena AG, Goodrich JK, Gordon JI, Huttley GA, Kelley ST, Knights D, Koenig JE, Ley RE, Lozupone CA, McDonald D, Muegge BD, Pirrung M, Reeder J, Sevinsky JR, Tumbaugh PJ, Walters WA, Widmann J, Yatsunenko T, Zaneveld J & Knight R (2010) QIIME allows analysis of high-throughput community sequencing data. *Nat Methods* **7**: 335-336.

584 Caroprese A, Gabbanini S, Beltramini C, Lucchi E & Valgimigli L (2009) HS-SPME-GC-MS  
 585 analysis of body odor to test the efficacy of foot deodorant formulations. *Skin Res Tech* **15**:  
 586 503-510.

587 Costello EK, Lauber CL, Hamady M, Fierer N, Gordon JL & Knight R (2009) Bacterial  
 588 community variation in human body habitats across space and time. *Science* **326**: 1694-  
 589 1697.

590 Egelrud T & Lundstrom A (1991) Intercellular lamellar lipids in plantar stratum-corneum. *Acta*  
 591 *Dermato-Venereol* **71**: 369-372.

592 Farrelly V, Rainey FA & Stackebrandt E (1995) Effect of genome size and rrn gene copy  
 593 number on PCR amplification of 16S rRNA genes from a mixture of bacterial species. *Appl*  
 594 *Environ Microbiol* **61**: 2798-2801

595 Findley K, Oh J, Yang J, Conlan S, Deming C, Meyer JA, Schoenfeld D, Nomicos E, Park M,  
 596 Kong HH & Segre JA (2013) Topographic diversity of fungal and bacterial communities in  
 597 human skin. *Nature* **498**: 367-370.

598 Fogarty AL, Barlett R, Ventenat V & Havenith G (2007) Regional foot sweat rates during a  
 599 65 minute uphill walk with a backpack. In *Environmental Ergonomics XII* ed. Mekjavic IB,  
 600 Kounalakis SN & Taylor NAS pp. 266-269. Ljubljana.

601 Gao Z, Tseng CH, Pei Z & Blaser MJ (2007) Molecular analysis of human forearm superficial  
 602 skin bacterial biota. *P Natl Acad Sci USA* **104**: 2927-2932.

603 Gonzalez JM, Zimmermann J & Saiz-Jimenez C (2005) Evaluating putative chimeric  
 604 sequences from PCR amplified products and other cross-over events. *Bioinformatics* **21**:  
 605 333-343.



606 Grice EA, Kong HH, Conlan S, Deming CB, Davis J, Young AC, Bouffard GG, Blakesley  
607 RW, Murray PR, Green ED, Turner ML & Segre JA (2009) Topographical and temporal  
608 diversity of the human skin microbiome. *Science* **324**: 1190-1192.

609 Grice EA & Segre JA (2011) The skin microbiome. *Nat Rev Microb* **9**: 244-253. Hamady M,  
610 Walker JJ, Harris JK, Gold NJ & Knight R (2008). Error-correcting barcoded primers allow  
611 hundreds of samples to be pyrosequenced in multiplex. *Nat Methods* **5**: 235.

612 Harker M, Carvell A-M, Marti VPJ, Riazanskaia S, Kelso H, Taylor D, Grimshaw S, Arnold  
613 DS, Zillmer R, Shaw J, Kirk JM, Alcasid ZM, Gonzales-Tanon S, Rosing EAE & Smith AM  
614 (2014) Functional characterization of a SNP in the ABCC11 allele - Effects on axillary skin  
615 metabolism, odour generation and associated behaviours. *J Dermatol Sci* **73**: 23-30.

616 Harker M & Harding CR (2012) Amino acid composition, including key derivatives of eccrine  
617 sweat: potential biomarkers of certain atopic skin conditions. *Int J Cosmet Sci* **35**: 163-168.

618 Holland KT, Gribbon EM & Marshall J (1990) Qualitative and quantitative assay for detection  
619 of callus degrading activity by bacteria. *Letts Appl Microb* **11**: 224-227.

620 James AG, Cox D. & Worrall K (2013) Microbiological and biochemical origins of human foot  
621 malodour. *Flavour Fragr J* **28**: 231-237.

622 Kanda F, Yagi E, Fukuda M, Nakajima K, Ohta T & Nakata O (1990) Elucidation of chemical  
623 compounds responsible for foot malodor. *Brit J Dermatol* **122**: 771-776.

624 Kim SH, Kim S, Choi HI, Choi YJ, Lee YS, Sohn KC, Lee Y, Kim CD, Yoon TJ, Lee JH & Lee  
625 YH (2010) Callus formation is associated with hyperproliferation and incomplete  
626 differentiation of keratinocytes, and increased expression of adhesion molecules. *Brit J*  
627 *Dermatol* **163**: 495-501.

628 Leeming JP, Holland KT & Cunliffe WJ (1984) The microbial ecology of pilosebaceous units  
629 isolated from human skin. *J Gen Microb* **130**: 803-807.

630 Malcolm SA & Hughes TC (1980) Demonstration of bacteria on and within the stratum-  
 631 corneum using scanning electron-microscopy. *Brit J Dermatol* **102**: 267-275.

632 Marcille F, Gomez A, Joubert P, Ladire M, Veau G, Clara A, Gavini F, Willems A & Fons M.  
 633 Distribution of genes encoding the trypsin-dependent lantibiotic ruminococcin A among  
 634 bacteria isolated from human fecal microbiota. *Appl Environ Microbiol* **68**: 3424-3431.

635 Marshall J, Holland KT & Gribbon EM (1988) A comparative study of the cutaneous  
 636 microflora of normal feet with low and high-levels of odor. *J Appl Bacteriol* **65**: 61-68.

637 Marshall J, Leeming JP & Holland KT (1987) The cutaneous microbiology of normal human  
 638 feet. *J Appl Bacteriol* **62**: 139-146.

639 Martin HJ, Riazanskaia S. & Thomas CLP (2012) Sampling and characterisation of volatile  
 640 organic compound profiles in human saliva using a polydimethylsiloxane coupon placed  
 641 within the oral cavity. *Analyst* **137**: 3627-3634.

642 Mecklin CJ (2004) The credible diversity plot: A graphic for the comparison of biodiversity.  
 643 *Accuracy 2004 Conference. Portland, Maine. International Spatial Accuracy Research*  
 644 *Association.*

645 Meyer AF, Lipson DA, Martin AP, Schadt CW & Schmidt SK (2004) Molecular and metabolic  
 646 characterization of cold-tolerant alpine soil *Pseudomonas sensu stricto*. *Appl Environ*  
 647 *Microbiol* **70**: 483-489.

648 Natsch A, Derrer S, Flachsmann F & Schmid J (2006) A broad diversity of volatile carboxylic  
 649 acids, released by a bacterial aminoacylase from axilla secretions, as candidate molecules  
 650 for the determination of human-body odor type. *Chem Biodivers* **3**: 1-20.

651 Quince C, Lanzen A, Curtis TP, Davenport RJ, Hall N, Head IM, Read LF & Sloan WT  
 652 (2009) Accurate determination of microbial diversity from 454 pyrosequencing data. *Nat*  
 653 *Methods* **6**: 639.

654 Quince C, Lanzen A, Davenport RJ & Turnbaugh PJ (2011) Removing noise from  
 655 pyrosequenced amplicons. *BMC Bioinformatics* **12**: 38.

656 Quinton PM, Elder HY, McEwan Jenkinson D & Bovell DL (1999) Structure and function of  
 657 human sweat glands. In *Antiperspirants and Deodorants* ed. Laden K & Felger CB pp. 17-  
 658 57. New York: Marcell Dekker Inc.

659 Riazanskaia S, Blackburn G, Harker M, Taylor D & Thomas CLP (2008) The analytical utility  
 660 of thermally desorbed polydimethylsilicone membranes for *in-vivo* sampling of volatile  
 661 organic compounds in and on human skin. *Analyst* **133**: 1020-1027.

662 Roth RR & James WD (1988) Microbial ecology of the skin. *Annu Rev Microb* **42**: 441-464.

663 Schleifer KH & Kloos WE (1975) Isolation and characterization of Staphylococci from human  
 664 skin I. Amended descriptions of *Staphylococcus epidermidis* and *Staphylococcus*  
 665 *saprophyticus* and descriptions of three new species: *Staphylococcus cohnii*,  
 666 *Staphylococcus haemolyticus*, and *Staphylococcus xylosus*. *J Syst Bacteriol* **25**: 50-61.

667 Smith CJ & Havenith G (2011) Body mapping of sweating patterns in male athletes in mild  
 668 exercise-induced hyperthermia. *Euro J Appl Physiol* **111**: 1391-1404.

669 Szabo G (1962) The number of eccrine sweat glands in human skin. In *Advances in biology*  
 670 *of the skin* ed. Montagna W, Ellis RA & Silver AF pp. 1-5. London: Pergamon Press.

671 Tauch A, Kaiser O, Hain T, Goesmann A, Weisshaar B, Albersmeier A, Bekel T, Bischoff N,  
 672 Brune I, Chakraborty T, Kalinowski J, Meyer F, Rupp O, Schneiker S, Viehoveer P & Puhler  
 673 A (2005) Complete genome sequence and analysis of the multiresistant nosocomial  
 674 pathogen *Corynebacterium jeikeium* K411, a lipid-requiring bacterium of the human skin  
 675 flora. *J Bacteriol* **187**: 4671-4682.

676 Taylor D, Daulby A, Grimshaw S, James G, Mercer J & Vaziri S (2003) Characterization of  
 677 the microflora of the human axilla. *Int J Cosmet Sci* **25**: 137-145.

678 Taylor NAS, Caldwell FN & Mekjavic IB (2006) The sweating foot: Local differences in sweat  
679 secretion during exercise-induced hyperthermia. *Aviat Space Environ Med* **77**: 1020-1027.

680 Troccaz M, Benattia F, Borchard G & Clark AJ (2008) Properties of recombinant  
681 *Staphylococcus haemolyticus* cystathionine  $\beta$ -lyase (metC) and its potential role in the  
682 generation of volatile thiols in axillary malodor. *Chem Biodivers* **5**: 2372-2385.

683 Walters WA, Caporaso JG, Lauber CL, Berg-Lyons D, Fierer N & Knight R (2011)  
684 PrimerProspector: de novo design and taxonomic analysis of PCR primers. *BMC*  
685 *Bioinformatics* **27**:1159-1161.

686 Wang Q, Garrity GM, Tiedje JM & Cole JR (2007). Naive Bayesian classifier for rapid  
687 assignment of rRNA sequences into the new bacterial taxonomy. *Appl Environ Microbiol* **73**:  
688 5261-5267.

689 Williamson P & Kligman AM (1965) A new method for the quantitative investigation of  
690 cutaneous bacteria. *J Invest Dermatol* **45**: 498-503.

691

692 **Figure 1.** Mapping of bacteria across the foot at sites A to H. Bars represent mean bacterial enumeration on  
693 three different media; a.SS, *Staphylococcus* selective medium; b. ACP, aerobic *Corynebacterium* spp.; c. FaNov,  
694 fastidious anaerobe agar for the enumeration of Gram-positive anaerobic cocci. N = 16 subjects and left and  
695 right so each bar is indicative of 32 data points. Coloured by foot area, blue = dorsal, red = plantar. Letters  
696 above the bars refer to those skin sites displaying statistically significant differences in bacterial numbers  
697 compared to the skin site represented by that bar.

698

699 **Figure 2.** Contour plot displaying differences in numbers of bacteria across sites A to H on the foot between  
700 males and females. Bacterial enumeration data from three media ; a.SS, *Staphylococcus* selective medium; b.  
701 ACP, aerobic *Corynebacterium* spp.; c. FaNov, fastidious anaerobe agar for the enumeration of Gram-positive  
702 anaerobic cocci. N = 16 subjects (8 males and 8 females), left and right foot sampled so each site has 32 data  
703 points. Contour plot coloured by gender and overlaid contours, blue = female, red = male.

704

705 **Figure 3.** Interpersonal variation in bacterial community composition for the 13 most predominant genera  
706 observed across the dorsal and plantar skin sites.

707

708 **Figure 4.** Heat map representation of the prevalence of bacterial genera at plantar and dorsal sites. Colours  
709 reflect the relative abundance of genera from low (black) through blue and yellow to red (high). The genera form  
710 the rows sorted by abundance, and samples form the columns and are clustered based on the Bray-Curtis  
711 dissimilarity matrix.

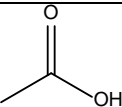
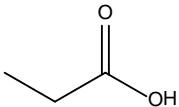
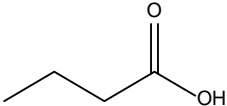
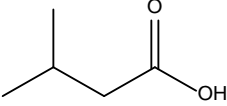
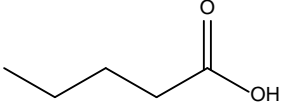
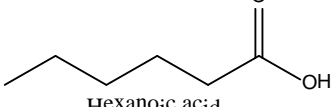
712

713

714 **Figure 5.** Example of a selected ion ( $m/z$  60) chromatogram obtained from GC/MS analysis of a PDMS skin  
715 patch of the A dorsal, and B. plantar surfaces of the foot of the same subject. The fatty acids identified are; 1 =  
716 acetic acid, 2 = butyric acid, 3 = isovaleric acid, 4 = valeric acid, 5 = hexanoic acid.

717

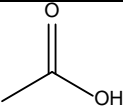
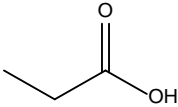
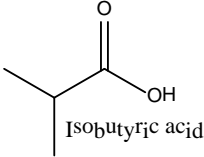
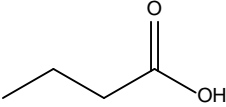
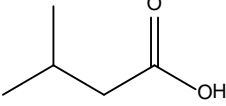
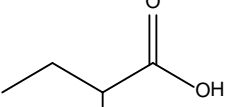
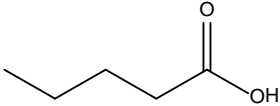
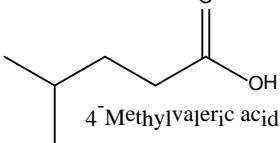
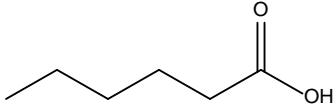
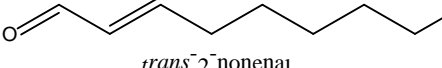
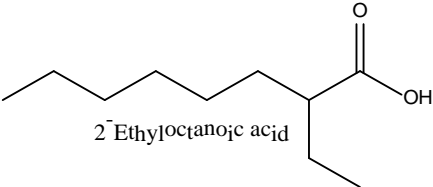
**Table 1.** Quantification of volatile fatty acids from the dorsal and plantar surface of the foot and the respective p values comparing both sites (n=10).

VFA	Dorsal Amount (ng) ± Standard deviation	Plantar Amount (ng) ± Standard deviation	t-test p-value
 Acetic acid	4.309 (± 1.302)	8.359 (± 3.742)	0.013
 Propionic acid	1.376 (± 0.446)	1.830 (± 0.655)	0.189
 Butyric acid	1.591 (± 0.934)	2.370 (± 0.878)	0.152
 Isovaleric acid	0 (± 0)	0.310 (± 0.256)	0.012
 Valeric acid	1.216 (± 0.584)	2.173 (± 0.84)	0.022
 Hexanoic acid	3.952 (± 2.862)	10.049 (± 4.282)	0.003

**Table S1 : Thermal desorber and GC-MS conditions**

Parameter	Setting
<b>Markes International</b>	<b>Unity 2 Thermal Desorption Conditions</b>
Primary desorption flow	50 cm <sup>3</sup> min <sup>-1</sup>
Primary desorption temperature	180°C
Primary desorption split	Splitless
Primary desorption time	5.0 min
Cold trap	Markes International UK general purpose hydrophobic cold trap (Part No U-T2GPH-2S)
Cold trap low temperature	-10°C
Secondary desorption flow	1 cm <sup>3</sup> min <sup>-1</sup>
Secondary desorption temperature	300°C
Secondary desorption split	Splitless
Secondary desorption time	5.0 min
<b>Gas Chromatograph Conditions</b>	
Column	DB5 MS 60 m x 0.25 mm x 0.25 µm
Column flow	2 ml/min <sup>-1</sup>
Carrier gas	Helium
Temperature program	40°C initial, hold 0.0 min 5°C min <sup>-1</sup> to 300°C, hold 8.0 min
Total run time	60 min
<b>Mass Spectrometer Conditions</b>	
Scan type	TIC or SIM (see table 3 for SIM target details)
Mass range	40 to 445 m/z
Scan time	0.45 secs
Ionisation	EI+
Total run time	60 min (140min)
Source Temperature	200°C
Interface Temperature	250°C

**Table S2:** Volatile fatty acid GC/MS retention times using the separation conditions as described and their respective target ions in selected ion chromatogram mode.

VFA	Retention time (minutes)	Target ion mass in SIC mode (m/z)
 Acetic acid	3.72	60
 Propionic acid	4.57	74
 Isobutyric acid	5.23	73
 Butyric acid	5.94	60
 Isovaleric acid	7.12	60
 2-Methylbutyric acid	7.41	74
 Valeric acid	8.25	60
 4-Methylvaleric acid	9.99	74
 Hexanoic acid	10.89	60
 <i>trans</i> -2-nonenal	16.04	83
 2-Ethyl-octanoic acid	21.38	73



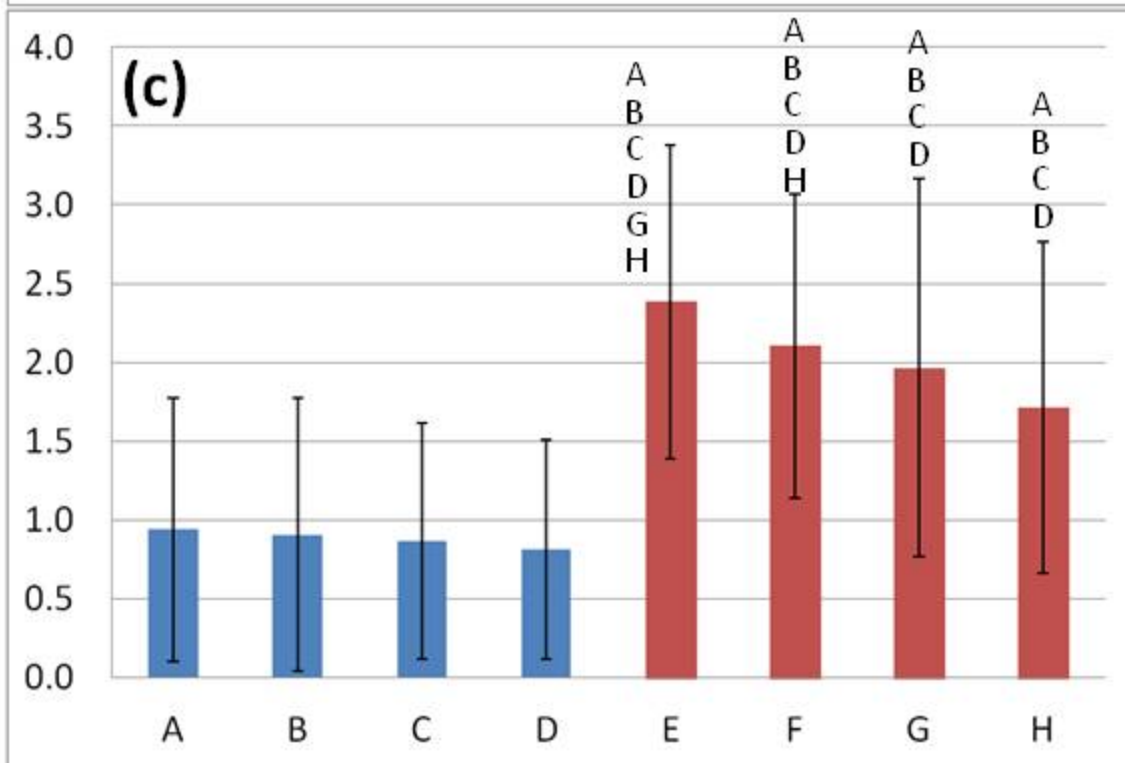
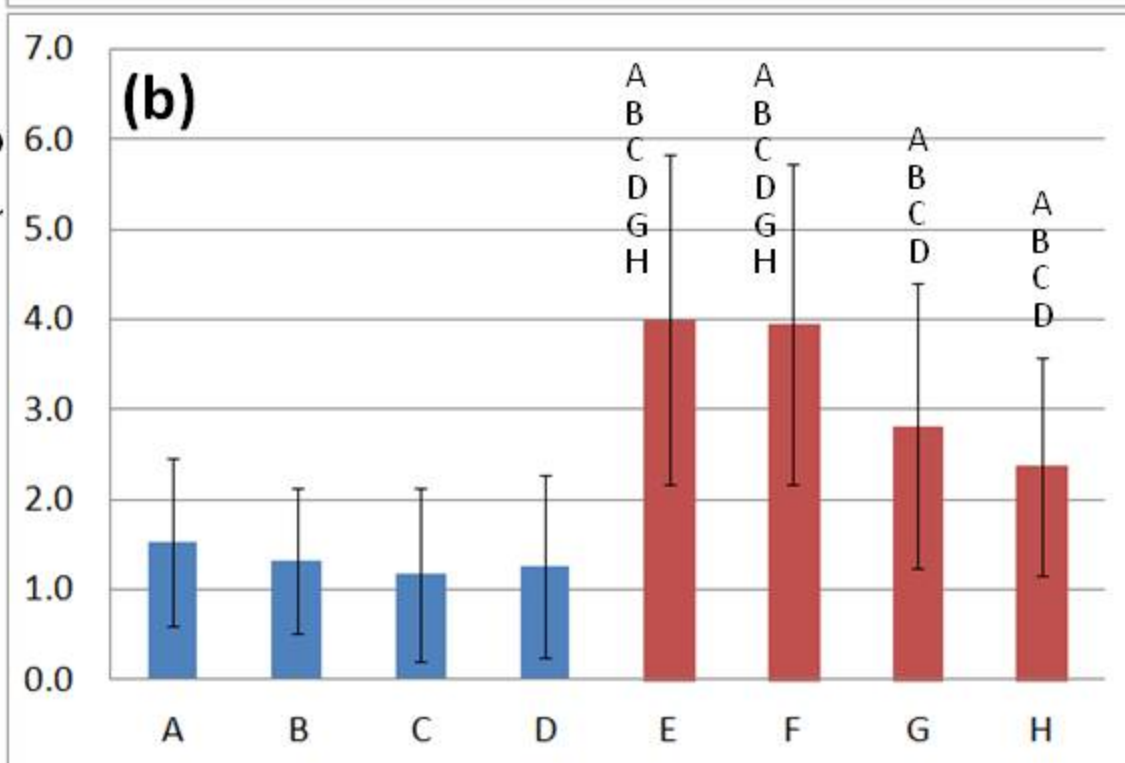
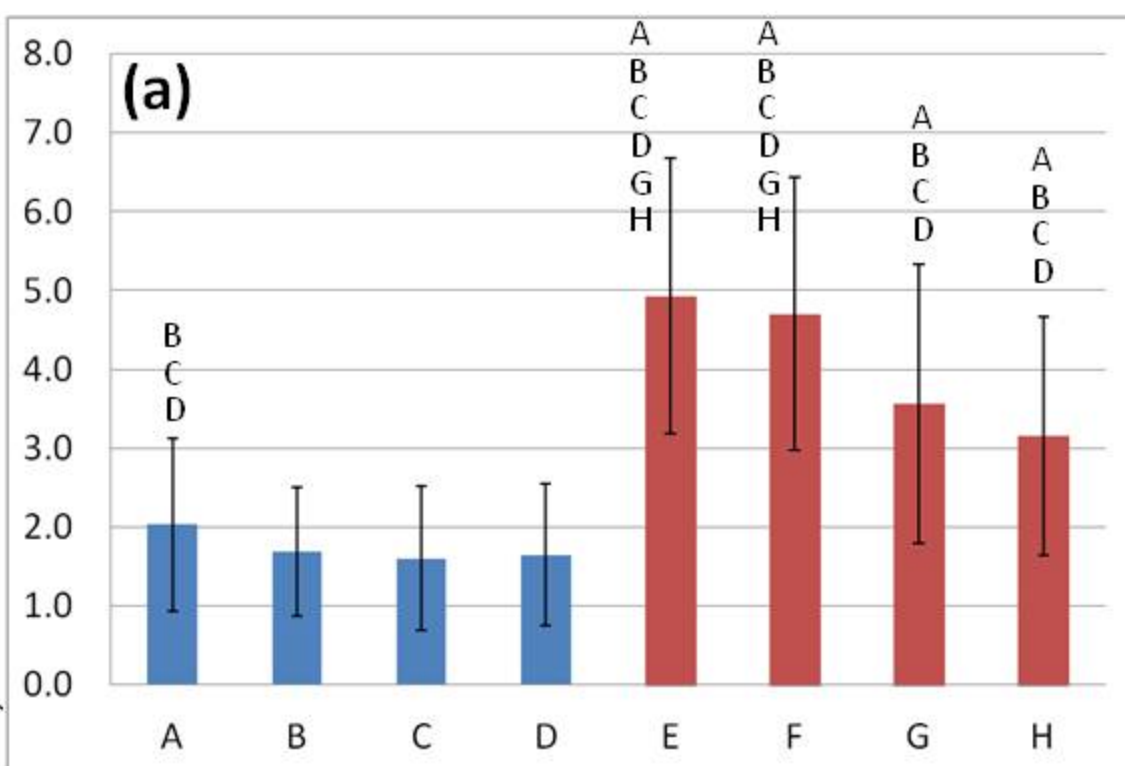
**Table S3:** Sequence and OTU distribution by individual sample. The table illustrates the effect of barcode & primer sequence errors (1), denoising and chimera removal (2) on the sequence data and indicates the number of OTUs obtained per sample. Data here shows 10 subjects (Sample ID) 1 to 10 together with the corresponding site sampled (D, Dorsal; P, Plantar). Total OTUs are all observations found in the individual samples.

Sample	Assignable Raw Sequences (1)	Processed Sequences (2)	OTUs
1D	1030	944	82
1P	3462	3162	3
2D	2771	2583	169
2P	7800	7262	13
3D	2166	1997	124
3P	336	306	36
4D	5299	4906	212
4P	9329	8509	58
5D	1382	1307	91
5P	7581	6982	3
6D	2692	2453	95
6P	101019	65805	1
7D	8900	8296	98
7P	3610	3327	60
8D	1751	1615	131
8P	1884	1785	134
9D	4148	3764	114
9P	1542	1432	15
10D	15249	13993	244
10P	2287	2111	2
<b>Total</b>	<b>184238</b>	<b>142539</b>	<b>681</b>

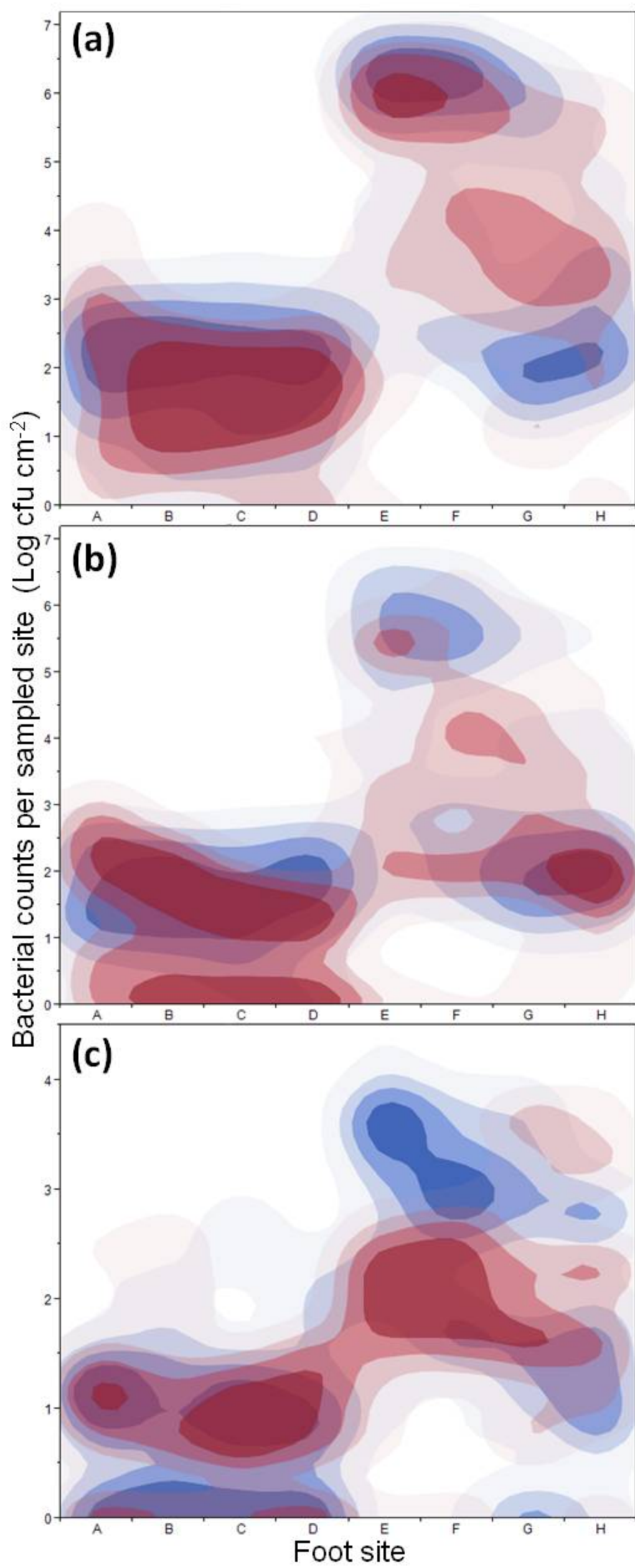
**Table S4:** Comparative testing using the Dirichlet-multinomial model. Genera showing evidence of a statistically significant difference between the mean relative abundance on the dorsal and plantar surfaces at the 95% confidence level.

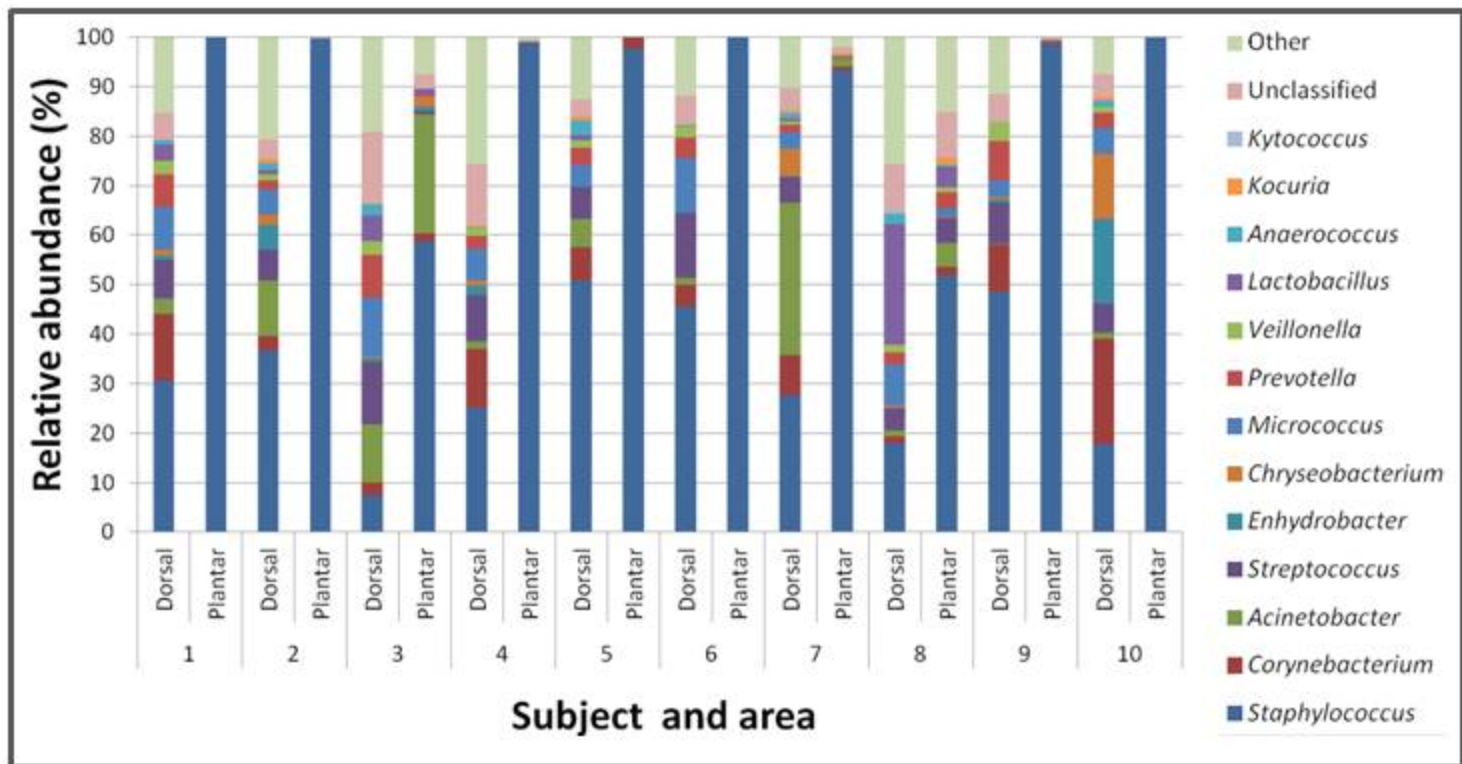
Genus	Dorsal	Plantar	p-value	q value
<i>Staphylococcus</i>	0.26908	0.98605	0.0010	0.0020
<i>Corynebacterium</i>	0.12064	0.00228	0.0029	0.0047
<i>Enhydrobacter</i>	0.06548	0.00004	<.0001	<.0001
<i>Chryseobacterium</i>	0.05998	0.0002	0.0015	0.0026
<i>Micrococcus</i>	0.05512	0.00042	0.0106	0.0139
<i>Peptoniphilus</i>	0.00596	0.00001	0.0477	0.0490
<i>Fingoldia</i>	0.00464	0.00001	0.0006	0.0014
<i>Fusobacterium</i>	0.00323	0.00001	<.0001	<.0001
<i>Paracoccus</i>	0.0021	0.00001	0.0126	0.0150
<i>Spirosoma</i>	0.00191	0.00001	<.0001	<.0001
<i>Aerococcus</i>	0.00073	0.00001	0.0001	0.0003
<i>Adhaeribacter</i>	0.00071	0.00001	0.00001	<.0001
<i>Arthrobacter</i>	0.00017	0.00001	0.0204	0.0225

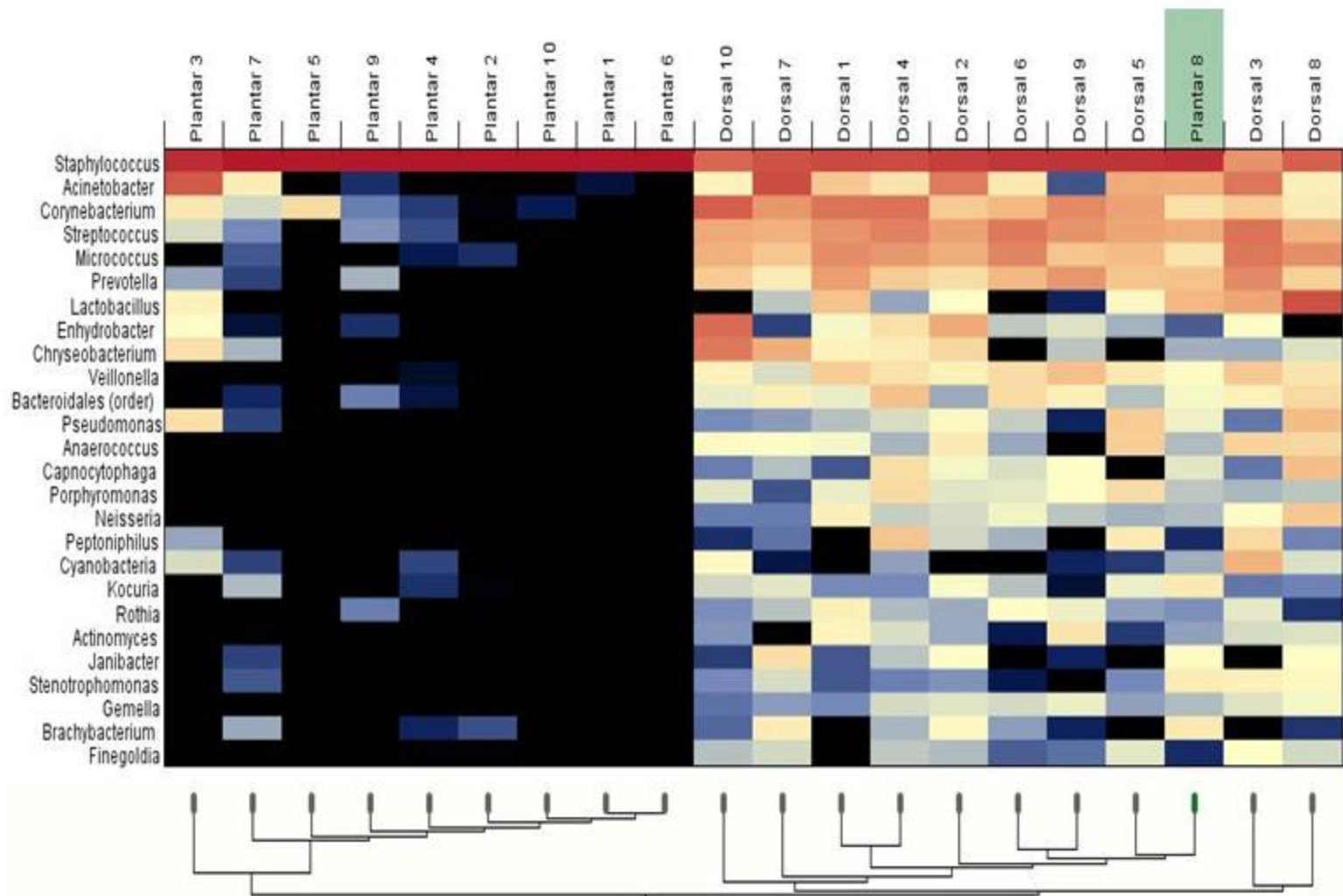
Mean bacterial enumeration (Log cfu cm<sup>-2</sup>)

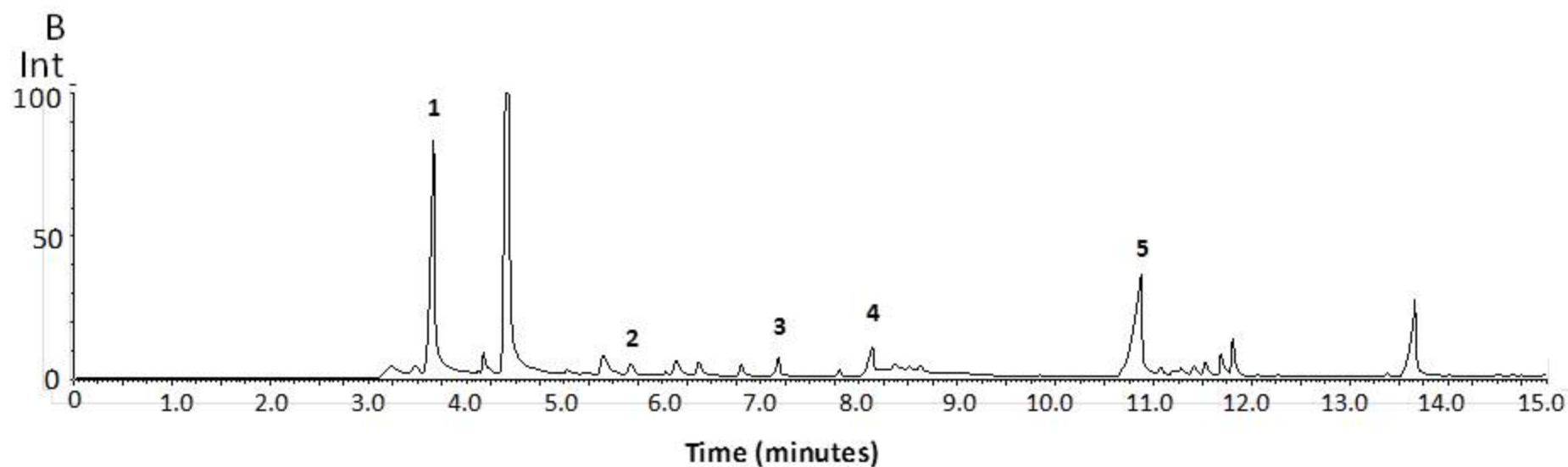
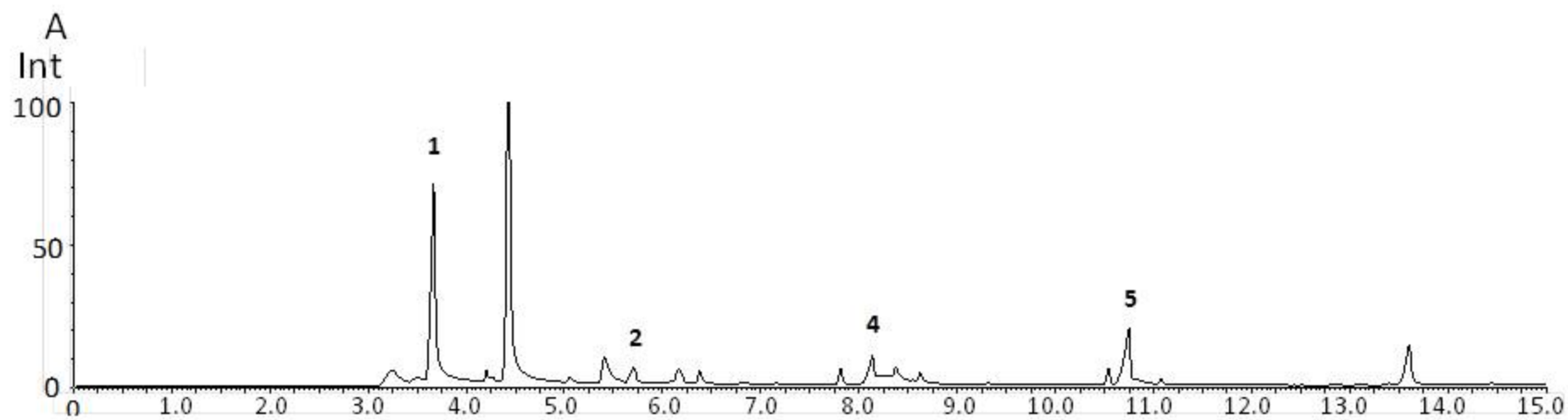


Foot site

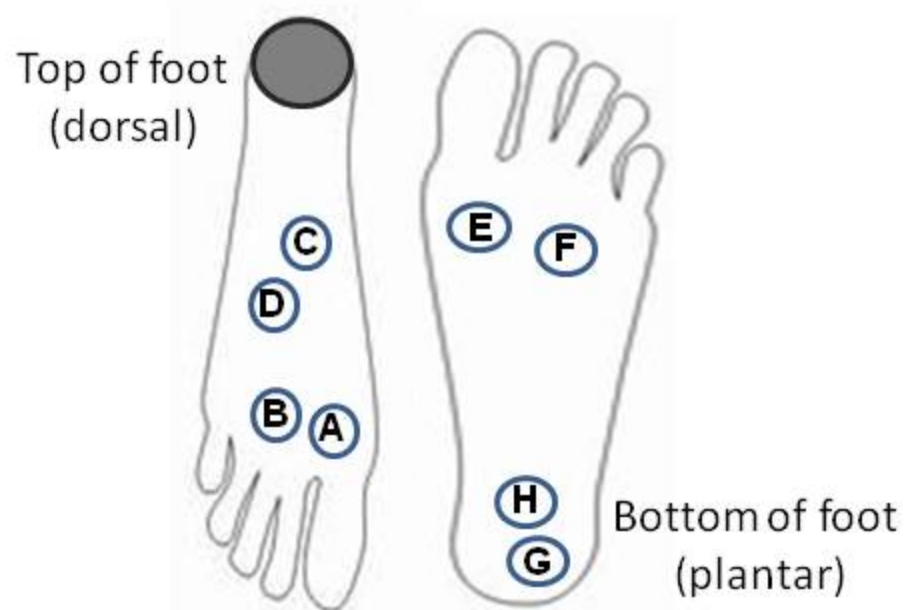








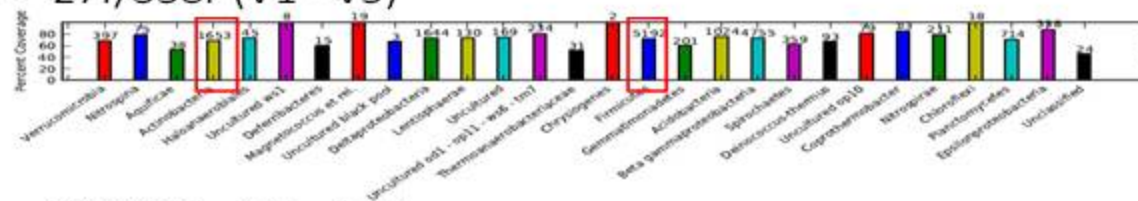
**Figure S1.** Diagrammatic representation of the 8 sampling sites selected for bacterial enumeration *via* culture based methods.



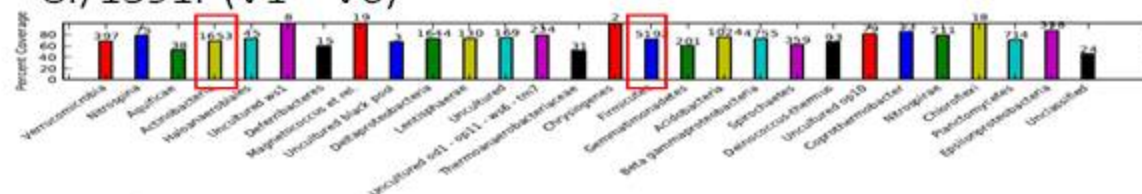


**Figure S2.** Predicted taxonomic coverage of primer pairs targeting different regions (V1–V6) of the 16S rRNA gene using PrimerProspector v1.0.1. The phyla highlighted in red include genera commonly associated with the skin microbiome. The 515f/1061r primer pair are predicted to provide broader phylum coverage and were selected for this study.

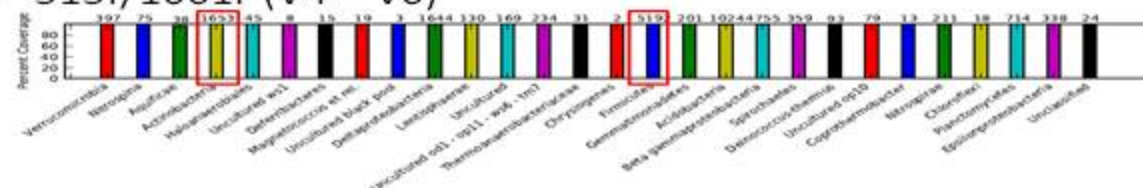
- 27f/338r (V1 - V3)



- 8f/1391r (V1 – V6)



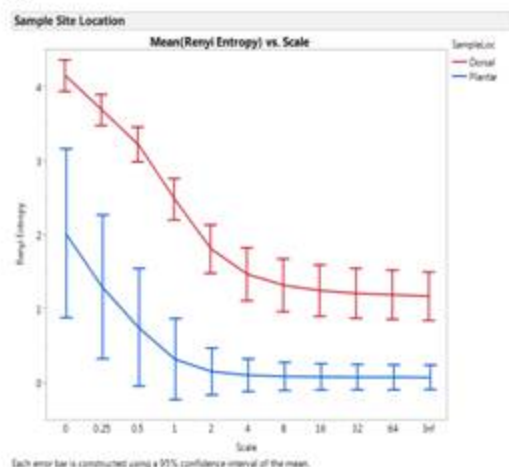
- 515f/1061r (V4 – V6)



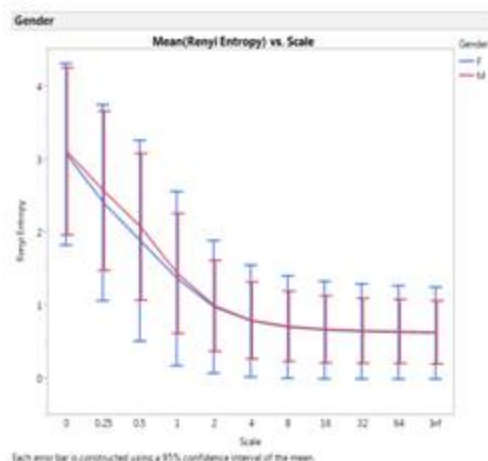


**Figure S4:  $\alpha$  diversity plots generated using Renyi Entropy calculations.** This allows the estimation of diversity across abundance levels from rare species (0) to the most abundant (Inf). Significant differences in diversity are observed where there is a clear separation of the error bars which represent 95% confidence intervals. A. Comparison of the two sample sites, dorsal (red) and plantar (blue); B. Comparisons between gender, female (blue) and male (red); D. Comparison of the two sample sites, dorsal (red) and plantar (blue) excluding samples 3P & 6P; Comparisons between gender, female (blue) and male (red) excluding samples 3P & 6P.

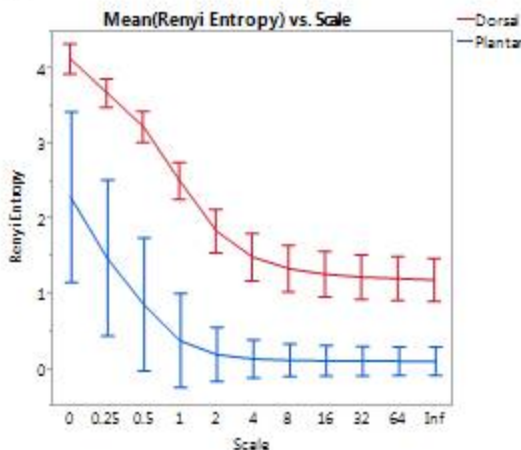
A.



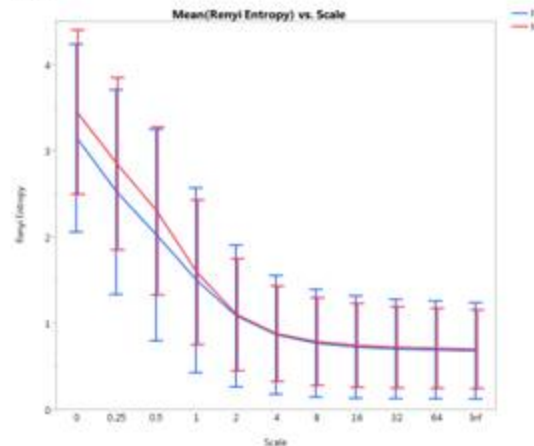
B.



C.



D.



**Figure 5S:  $\beta$ -diversity plots generated using weighted UniFrac distances.** A. Comparison of the two sample sites, dorsal (red) and plantar (blue); B. Comparisons between gender, female (red) and male (blue). The mean  $\beta$ -diversity was tested using permutation ANOVA and revealed a statistically significant difference by foot site ( $\text{Pr}( > F ) = < 0.001$ ) but not by gender ( $\text{Pr}( > F ) = 0.56$ ). C Comparison of the two sample sites, dorsal (red) and plantar (blue) excluding samples 3P & 6P; D. Comparisons between gender, female (red) and male (blue) excluding samples 3P & 6P. The mean  $\beta$ -diversity was tested using permutation ANOVA and revealed a statistically significant difference by foot site ( $\text{Pr}( > F ) = < 0.001$ ) but not by gender ( $\text{Pr}( > F ) = 0.62$ ).

