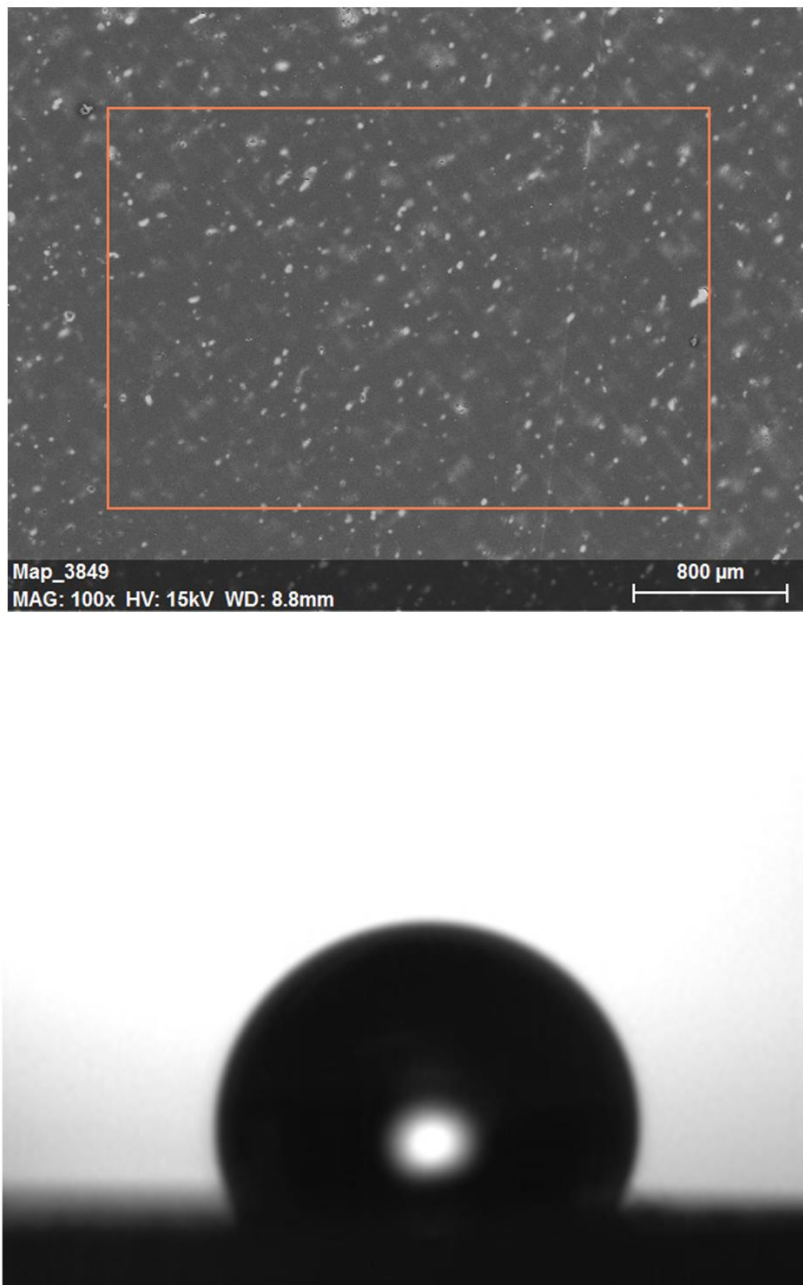
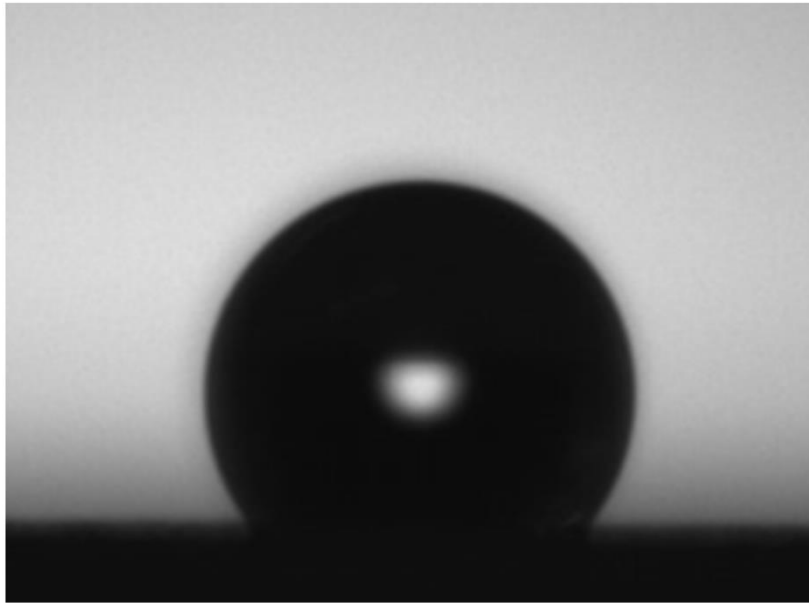
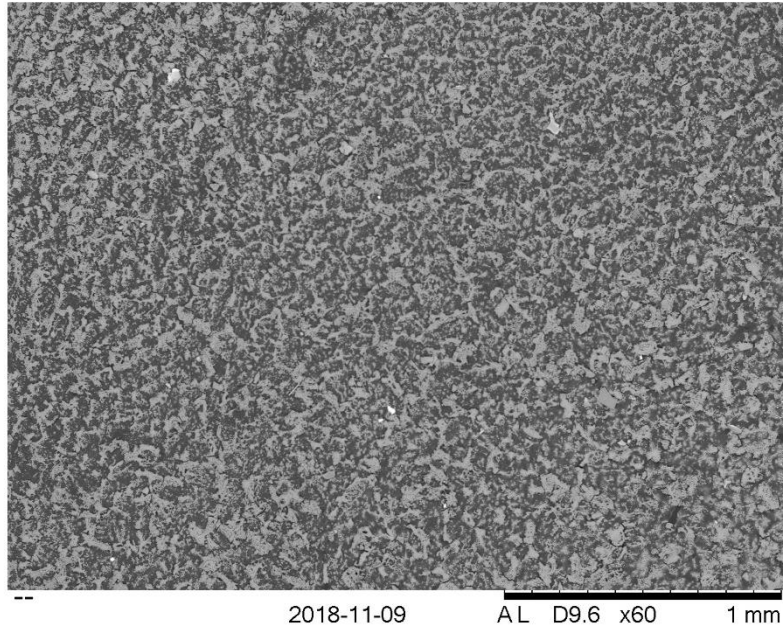


S2 Figure 6 a: SEM image and water contact angle of a non-treated printed and post-processed disk specimen.



S2 Figure 6 b: SEM image and water contact angle of a fluorosilane-coated printed and post-processed disk specimen.



S2 Figure 6 b: SEM image and water contact angle of a glass-coated printed and post-processed disk specimen.