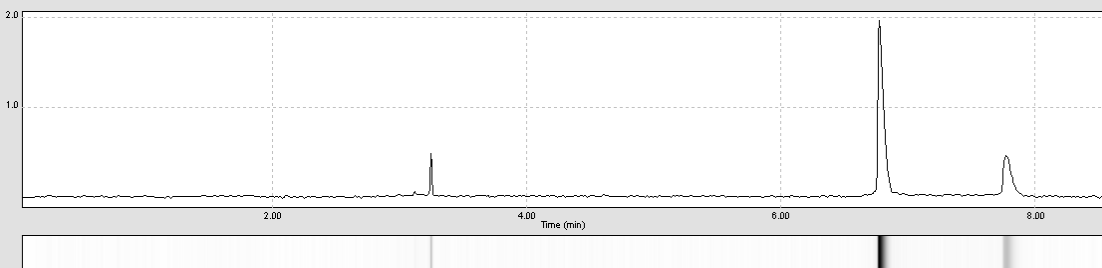
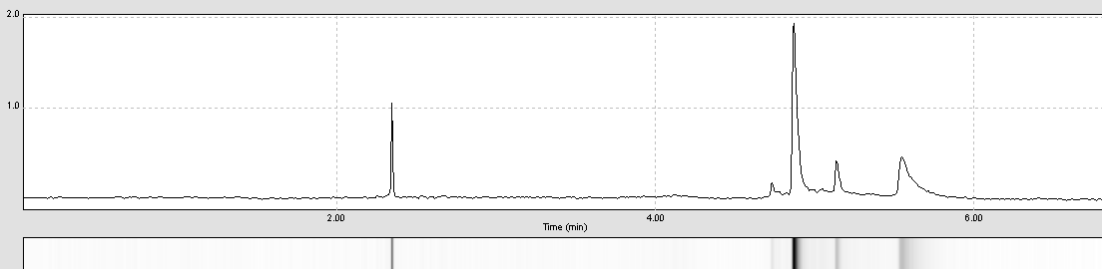


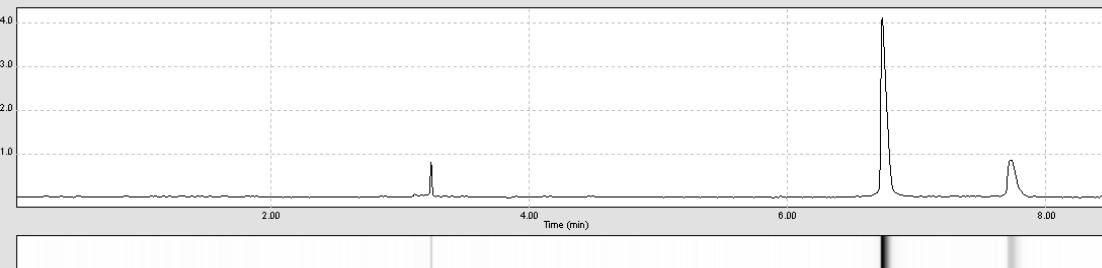
LCBs pair A-D: expected amplicon size - 1797 bp; obtained - 1799 bp (± 10 bp)



LCBs pair D-B: expected amplicon size - 1605 bp; obtained - 1608 bp (± 10 bp)



LCBs pair B-C: expected amplicon size - 1810 bp; obtained - 1813 bp (± 10 bp)



LCBs pair C-E: expected amplicon size - 1602 bp; obtained - 1610 bp (± 10 bp)

