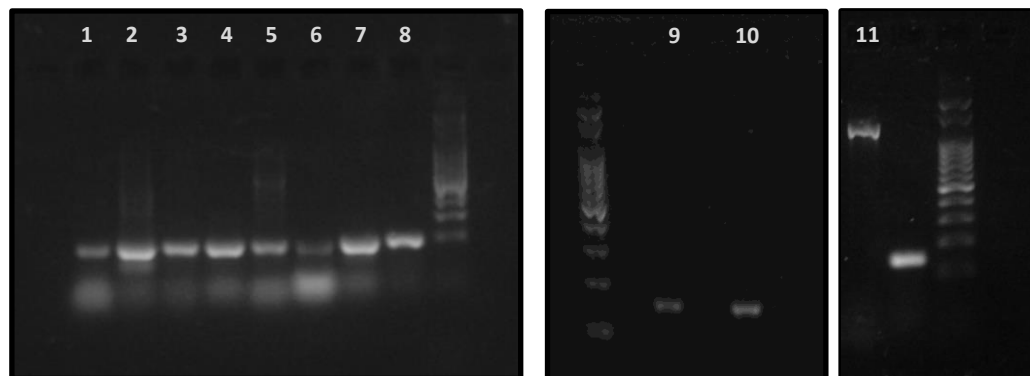


## Supplementary Figure 2

A

|    | Transcript_id       | Description                         | Primer sequence                                    | Amplicon expected size (pb) |
|----|---------------------|-------------------------------------|--|-----------------------------|
| 1  | comp103593_c0_seq1  | Alpha-tubulin                       | F_GCCTGATGTTCCGTGGTGAT<br>R_GTTGGGCACCACTGCGACAA   | 100                         |
| 2  | comp112022_c0_seq17 | Ubiquitin                           | F_AGCCACACTTGCCACAGTAA<br>R_AAGTTCAGAGGCTGAGGAAGGA | 100                         |
| 3  | comp22034_c0_seq1   | Plastocyanin                        | F_GGAAAGCAGCGTTGTCTTGA<br>R_GTCTTGCTCGGTGCTGATGA   | 100                         |
| 4  | comp67312_c0_seq1   | Metallothionein-like protein type 2 | F_TGGTGTTCACCCCAGAAG<br>R_GCAAGGATCACAGGTGCAGTT    | 100                         |
| 5  | comp108576_c2_seq1  | Major allergen                      | F_GGTGGTGTGGCAGCATTAA<br>R_AGTGGAACCTGCTTGCATCAAG  | 100                         |
| 6  | comp96468_c0_seq1   | Lipid transfer protein              | F_GGGATCAGGGCACTCAACAG<br>R_GGTTGATACCGCTGATGGATTT | 100                         |
| 7  | comp22041_c0_seq1   | Peroxidase                          | F_GCATAGACACCCCGGAGTT<br>R_GGATCCACCTCTGGGTACAAAC  | 100                         |
| 8  | comp72426_c0_seq1   | Oxygen-evolving enhancer protein 1  | F_GCATAGACACCCCGGAGTT<br>R_GGATCCACCTCTGGGTACAAAC  | 100                         |
| 9  | comp122133_c0_seq1  | Chalcon syntasa                     | F_GGGTGGGCAATCCAGAAGAT<br>R_AGATGGGCACTTGCCTGAAG   | 150                         |
| 10 | comp122412_c0_seq1  | 4-coumarate--CoA ligase             | F_GCTCTCGTCCCTGCGTGAT<br>R_CCGGCGAGTTCTGGAGTAAA    | 150                         |
| 11 | comp115046_c1_seq1  | Phenylalanine ammonia-lyase         | F_GGTAGCCACTTGATGAGGT<br>R_GCACTCTCGACCTCTTTTGG    | 1200                        |

B



C

|    | Description   | Query cover | E value    | Identity | Accession      |
|----|---|-------------|------------|----------|----------------|
| 1  | Alpha-tubulin [ <i>Populus alba</i> ]                           | 90%         | 2.4        | 100%     | AFR42124.1     |
| 2  | Ubiquitin [ <i>Gossypium hirsutum</i> ]                         | 91%         | 0.46       | 100%     | AAO92744.1     |
| 3  | Metallothionin 1 [ <i>Camellia sinensis</i> ]                   | 95%         | 3.4        | 100%     | ABD97257.1     |
| 4  | Plastocyanin, chloroplastic [ <i>Glycine soja</i> ]             | 95%         | 0.00000004 | 79%      | KHN33826.1     |
| 5  | Oxygen-evolving enhancer protein [ <i>Medicago truncatula</i> ] | 71%         | 0.24       | 88%      | XP_003611860.1 |
| 6  | Peroxidase [ <i>Populus tomentosa</i> ]                         | 95%         | 0.0001     | 95%      | AKE81099.1     |
| 7  | Lipid transfer protein-like [ <i>Arabidopsis thaliana</i> ]     | 92%         | 8.8        | 81%      | BAB09777.1     |
| 8  | Major allergen Pru ar 1-like [ <i>Nelumbo nucifera</i> ]        | 98%         | 7.2        | 72%      | XP_010245449.1 |
| 9  | 4-coumarate CoA ligase [ <i>Lonicera hypoglauca</i> ]           | 97%         | 3E-19      | 78%      | AGE10609.1     |
| 10 | Chalcone synthase [ <i>Morus alba</i> var. <i>multicaulis</i> ] | 98%         | 7E-25      | 98%      | AHL83549.1     |
| 11 | Phenylalanine ammonia-lyase [ <i>Perilla frutescens</i> ]       | 96%         | 0          | 89%      | AEZ67457.1     |