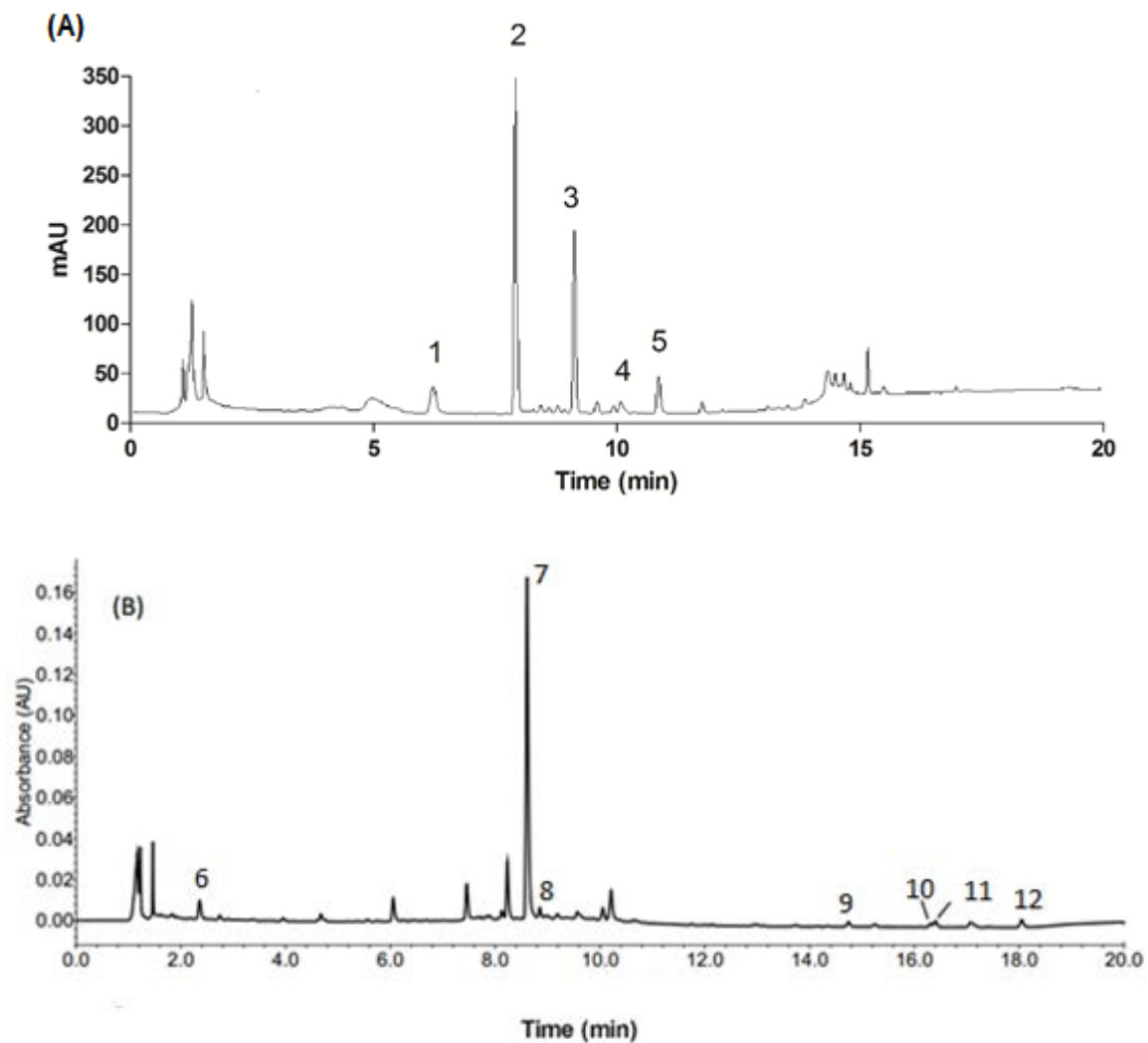


Additional file 1: Chemical fingerprint of raw herb extract of DS (A) and SQ (B) analysed by UPLC-PDA. (1) NR1, (2) Rg1, (3) Rb1, (4) Rg2, (5) Rd, (6) DSS, (7) SB, (8) SA, (9) DT, (10) CT, (11) T1, and (12) TIIA [1].



1. Zhou, X.; Razmovski-Naumovski, V.; Chan, K. A multivariate analysis on the comparison of raw notoginseng (Sanqi) and its granule products by thin-layer chromatography and ultra-performance liquid chromatography. *Chinese medicine* **2015**, *10*, (1), 13, doi: 10.1186/s13020-015-0040-2.

