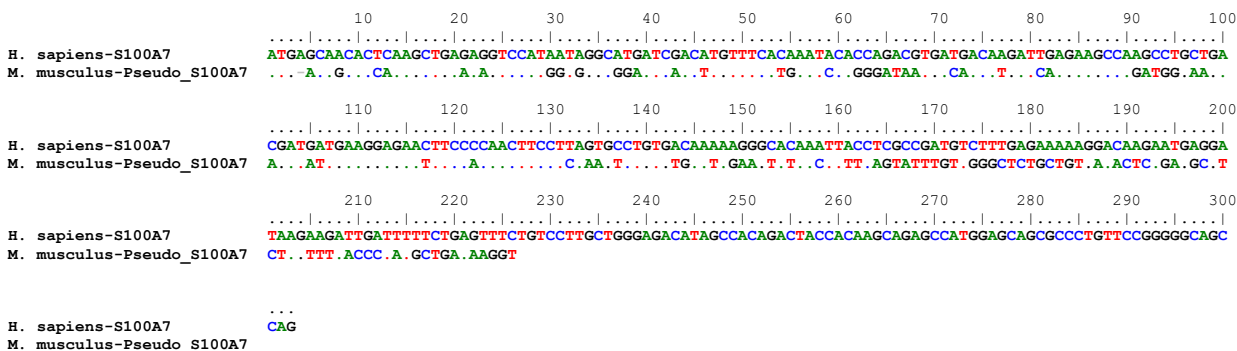
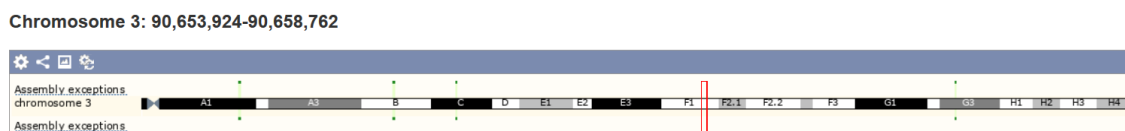


**Additional File 5. Search for the gene loss remnants of *S100A7* and *S100A15* from mouse and human, respectively.**

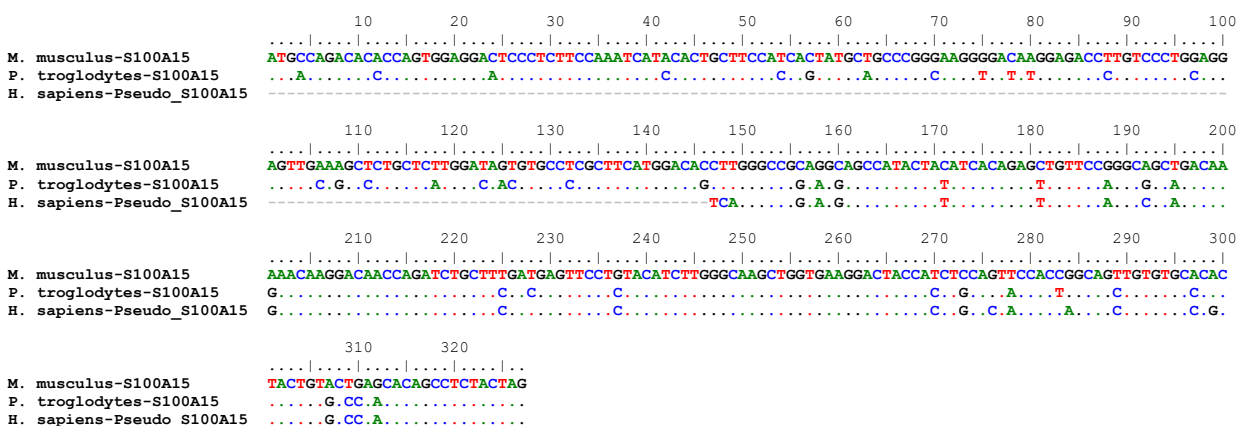
**Figure 1. Alignment of a partial sequences of *S100A7* from mouse.** The abbreviations correspond to the following species: H. sapiens - *Homo sapiens*; M. musculus - *Mus musculus*. Dots = identity with *H. sapiens* *S100A7* sequence.



**Figure 2. Genomic location of the partial *S100A7* sequence from mouse.** Data was obtained using *S100A7* coding sequence from human as a reference against Ensembl database.



**Figure 3. Alignment of a partial sequences of *S100A15* from human.** The abbreviations correspond to the following species: M. musculus - *Mus musculus*; P. troglodytes - *Pan troglodytes*; H. sapiens - *Homo sapiens*. Dots = identity with *M. musculus* *S100A15* sequence.



**Figure 4. Genomic location of the partial *S100A15* sequence from human.** Data was obtained using *S100A15* coding sequence from mouse as a reference against Ensembl database.

Chromosome 1: 153,396,582-153,396,765

