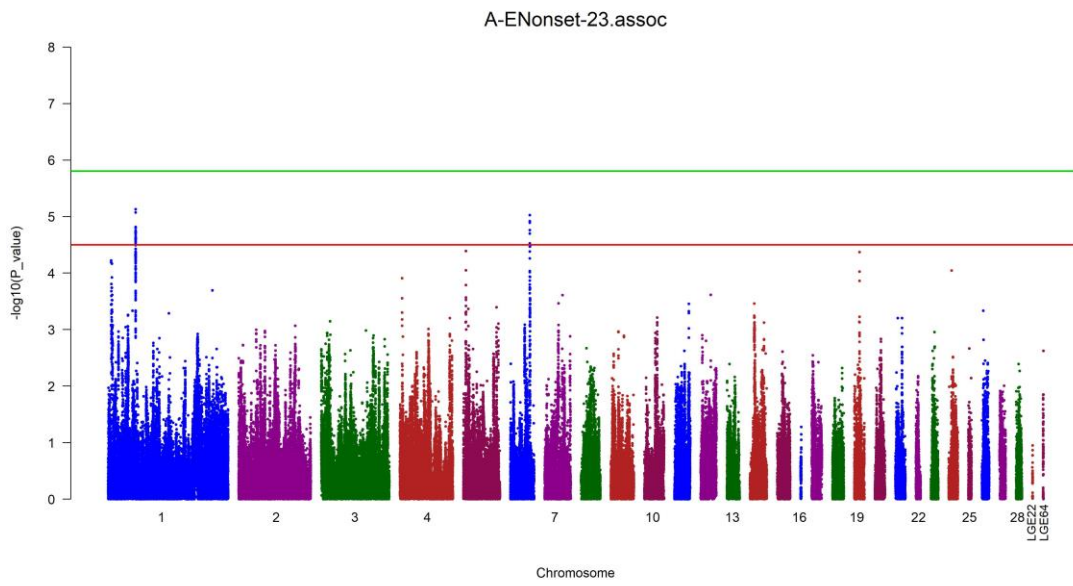
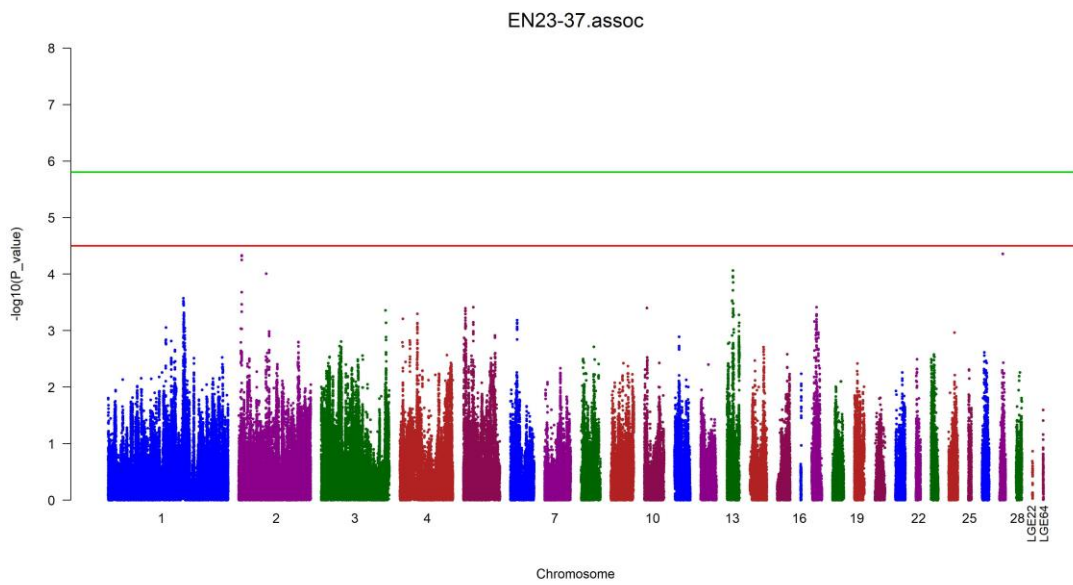


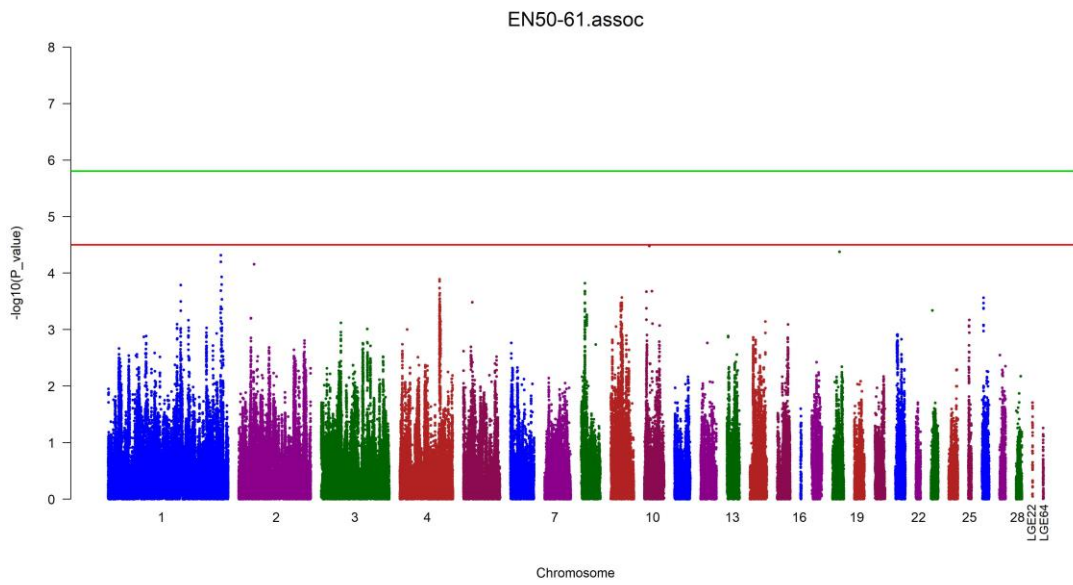
A. Genome-wide association study for EN1 (onset to 23 weeks).



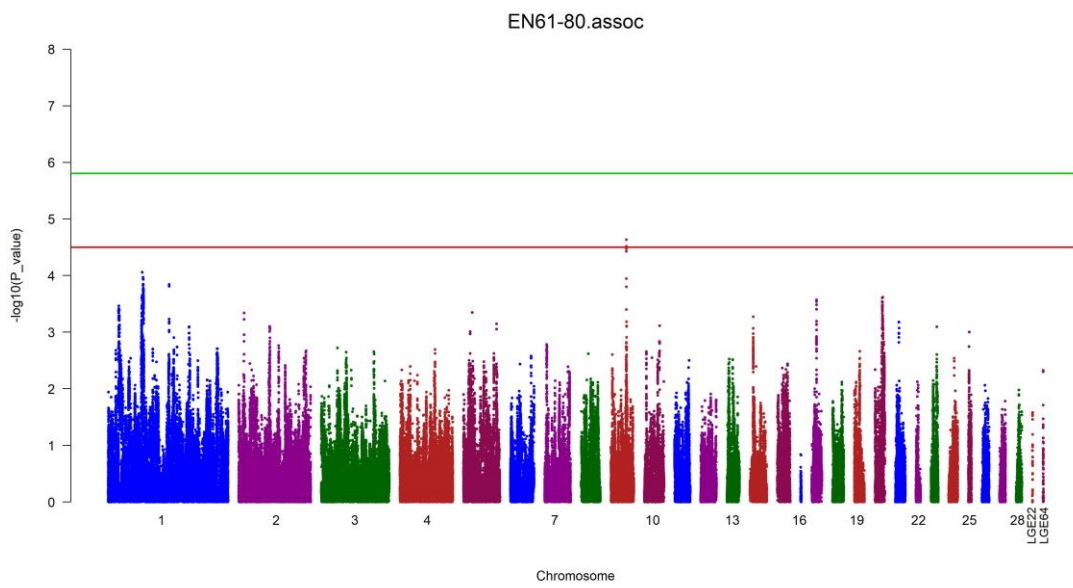
B. Genome-wide association study for EN2 (23 to 37 weeks).



C. Genome-wide association study for EN4 (50 to 61 weeks).



D. Genome-wide association study for EN5 (61 to 80 weeks).



E. Genome-wide association study for Total-EN (onset to 80 weeks).

EN_onset-80.assoc

