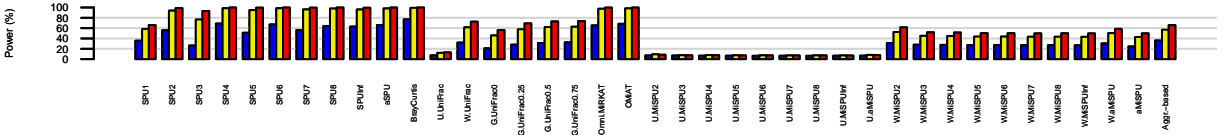
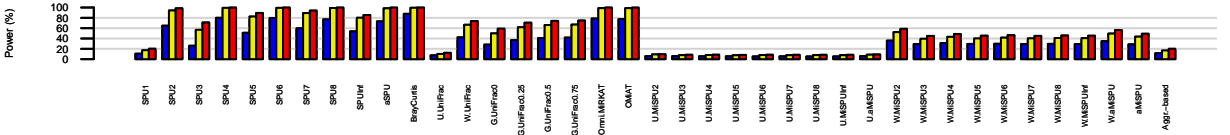


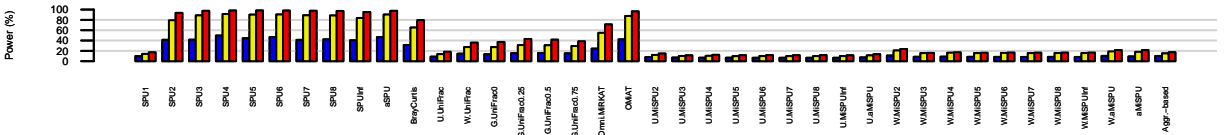
A. Positive effect: OTUs in upper 10% in abundance



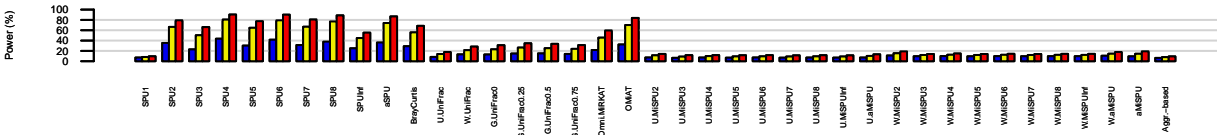
B. Mixed effect: OTUs in upper 10% in abundance



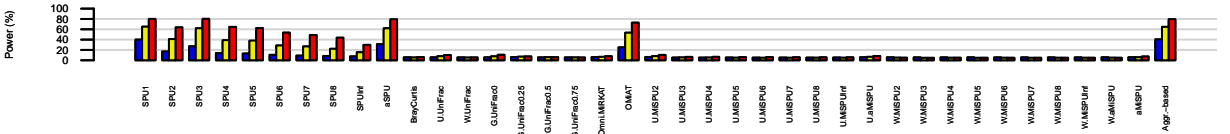
C. Positive effect: A random 10% of OTUs



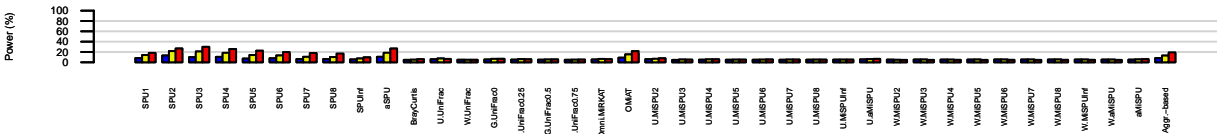
D. Mixed effect: A random 10% of OTUs



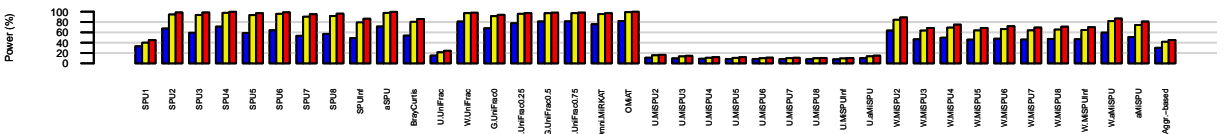
E. Positive effect: OTUs in lower 10% of abundance



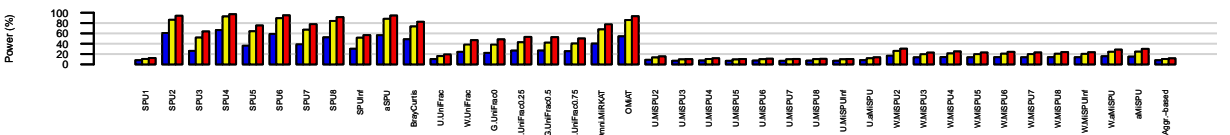
F. Mixed effect: OTUs in lower 10% of abundance



G. Positive effect: OTUs in the cluster



H. Mixed effect: OTUs in the cluster



■ β is sampled from Uni(0.1) for positive effect and from Uni(-1,1) for mixed effect
■ β is sampled from Uni(0.2) for positive effect and from Uni(-2,-2) for mixed effect
■ β is sampled from Uni(0.3) for positive effect and from Uni(-3,-3) for mixed effect