

Systematic Review of Clinician-Reported Barriers to Provision of Smoking Cessation Interventions in Hospital Inpatient Settings

AUTHOR(S)

Tom Sharpe, Ali Alsahlane, Ken D. Ward, Frank Doyle

CITATION

Sharpe, Tom; Alsahlane, Ali; Ward, Ken D.; Doyle, Frank (2018): Systematic Review of Clinician-Reported Barriers to Provision of Smoking Cessation Interventions in Hospital Inpatient Settings. figshare. Journal contribution. https://repository.rcsi.com/articles/Systematic_Review_of_Clinician-Reported_Barriers_to_Provision_of_Smoking_Cessation_Interventions_in_Hospital_Inpatient_Settings/1077144

LICENCE

CC BY-NC-SA 4.0

This work is made available under the above open licence by RCSI and has been printed from <https://repository.rcsi.com>. For more information please contact repository@rcsi.com

URL

https://repository.rcsi.com/articles/Systematic_Review_of_Clinician-Reported_Barriers_to_Provision_of_Smoking_Cessation_Interventions_in_Hospital_Inpatient_Settings/1077144/1

Systematic review of clinician-reported barriers to provision of smoking cessation interventions in hospital inpatient settings

Abstract:

Background: Although the hospital inpatient setting arguably provides an ideal opportunity to engage patients in smoking cessation interventions, this is done infrequently. We therefore aimed to systematically review the perceived barriers to the implementation of smoking cessation interventions in the hospital inpatient setting.

Methods: A systematic literature search was conducted specific to hospital-based healthcare workers' perceived barriers to implementing smoking cessation interventions. Reported barriers were categorised using the Capability, Opportunity and Motivation (COM-B) framework.

Results: 18 studies were selected for inclusion, which consisted of cross-sectional surveys and interviews. The most commonly identified barrier in Capability was lack of knowledge (56% of studies); in Opportunity, it was a lack of time (78%); while in Motivation, a lack of perceived patient motivation to quit smoking (44%). 17 other barriers were also endorsed, but less frequently.

Conclusion: Healthcare workers report a plethora of barriers to providing smoking cessation interventions in hospital settings, which cover all aspects of the COM-B framework. These impediments need to be addressed in a multidisciplinary approach, at clinical, educational and administrative levels, to improve intervention provision.

Keywords: "Smoking Cessation", "Brief Advice", "Hospital", "Barriers".

Introduction:

The World Health Organization identifies smoking as the leading cause of preventable death internationally, with 4.9 million deaths per year.¹ In 2012, the amount of healthcare expenditure due to smoking-attributable diseases totalled 5.7% of global health expenditure.² Worldwide, more than one billion people smoke tobacco, or identify as smokers.³ While this number is decreasing year-by-year, smoking-related illness remains a large proponent of respiratory and cardiac disease. Tobacco control should be at the forefront of every future nationwide healthcare policy. To this end, a 2012 Cochrane review, by Rigotti et al., demonstrated the effectiveness of brief smoking cessation interventions, on patients, when given by a healthcare professional.^{4,5} Hospitalised patients, in particular, are more receptive to intervention than the general population, especially those who have been admitted with tobacco-related disease.⁶ The inpatient hospital setting provides an optimal time for intervention, as healthcare workers are clearly able to identify patients who smoke tobacco.⁷ The inpatient setting provides other inherent incentives, such as increased patient motivation to quit, resources to manage withdrawal symptoms on-site and an ideal ability to facilitate follow-up with primary care for patients following smoking cessation interventions. Furthermore, it has its own unique features, separate to provider advice in other settings that are relevant to intervention, such as the short window of opportunity to intervene and oftentimes a lack of an established relationship with the patient. As such,

the inpatient setting provides a unique opportunity to provide cessation support, to avoid readmission and to reduce related mortality.^{8,9}

However, despite its proven effectiveness, various research studies have revealed low levels of cessation intervention being carried out by healthcare professionals in the inpatient setting.^{10, 11, 12} While different studies attribute this lack of engagement with provision of cessation advice to a variety of factors, no study has yet systematically reviewed these barriers or placed these determinants within the context of behaviour change theory.

We therefore aimed to systematically review studies which explore the barriers to implementation of smoking cessation interventions in a hospital inpatient setting. To provide further insight into these barriers, we report how often such barriers are reported, and we group the findings according to the COM-B model of behaviour; reflecting “Capability”, “Motivation” and “Opportunity”.¹³ This approach allows for more in-depth exploration of the barriers to provision of smoking cessation interventions for hospital inpatients.

Methods:

Protocol and registration: The systematic review was registered with PROSPERO (Protocol number: 42016042499). No protocol was published.

Eligibility Criteria: No restrictions were placed on study type. Any published research articles that reported barriers to the provision of smoking cessation advice in hospital settings were included. The inclusion criteria were studies based in the hospital inpatient setting, which detailed barriers to smoking cessation interventions and which were in English. Studies not in English, based outside of the hospital setting or unavailable as a full-text document were excluded.

Information sources: On the 4th of January 2017, an initial search strategy was developed using the databases OVID MEDLINE, OVID PsycINFO and Cinahl; three online databases. Google Scholar was used to find articles citing the included studies.

Search: Key words such as “physician role”, “counselling”, “intervention”, “smoking cessation”, “tobacco use cessation”, “barriers” and “factors” were used in the search strategy. Each of these search terms was entered into the search feature of OVID MEDLINE, OVID PsycINFO and Cinahl. For example, using OVID MEDLINE’s search engine, “physician role” OR “counselling” OR “intervention” was searched. Then “barriers” OR “factors” was searched. Lastly, “smoking cessation” OR “tobacco use cessation” was searched. To complete our search of this database, the limits from the three searches were entered into the search engine, using the qualifier “AND”. Following this, the results of this final search were transferred to Endnote, where they were compiled with the search results from the other two search engines. Any studies that featured the key terms and were available up to the 4th of January

2017 were included. The final search involved hand-searching the references and citing articles of the included studies.

Study selection: Studies were identified and compiled in an Endnote library. Duplicates were removed. Next, any research articles which did not meet the eligibility criteria according to title were detected and removed. These included papers not in the English language or those based outside of the hospital setting. After this, each of the abstracts were evaluated for relevance to the research topic.

Data collection process: A full-text copy of each research study was located. Two authors independently reviewed the articles and extracted the information. Any disagreements were discussed.

Data items: Any item which was reported as a barrier was recorded.

Risk of bias, summary measures, synthesis and additional analyses were not applicable to the present review.

Results:

Figure 1 is the study flowchart. The review yielded 18 research papers for final inclusion.

Figure 1: Barriers To Smoking Cessation Interventions Systematic Review - PRISMA 2009 Flow Diagram

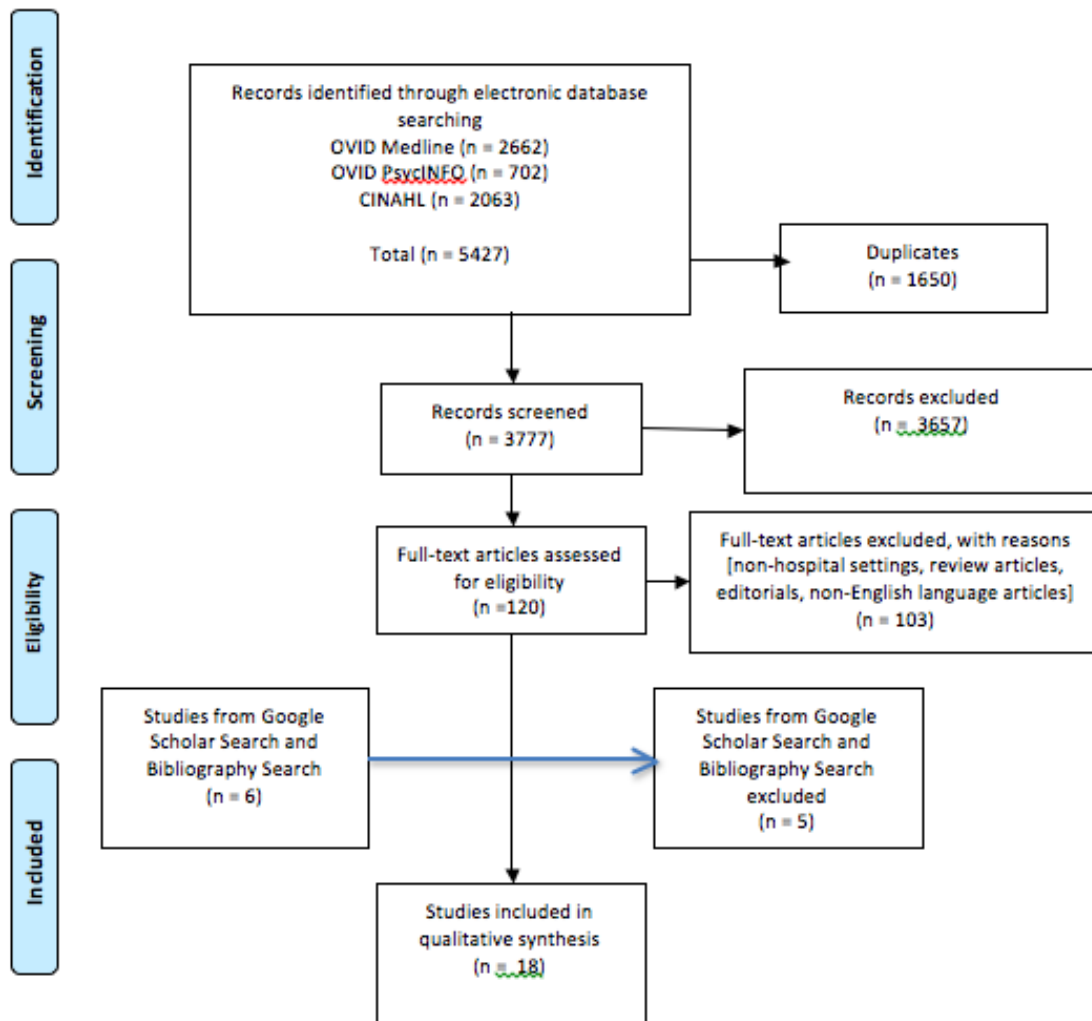


Table 1 lists an overview of the eighteen studies. The studies were carried out between 2001-2016 included hospitals in the US, Canada, England, Australia, Taiwan, Germany, Iceland, Scotland, China and the UAE. Eleven of the studies concerned nurses, while four studies specifically interviewed physicians. One study consisted of data from midwives and two studies assessed assorted healthcare professionals in the inpatient setting. Methodologies used ranged from self-completed questionnaires on healthcare worker practices to semi-structured interviews. Twelve studies were quantitative with six qualitative studies.

Table 2 details the twenty barriers found, under the headings of Capability, Opportunity and Motivation, including the number (%) of studies that identify each barrier.

The most common barrier were lack of time (78% of studies), lack of knowledge (regarding smoking cessation interventions; 56%), perceived lack of motivation to quit (44%) and lack of support (including from other

colleagues, the hospital and the wider healthcare system; 44%). Barriers reported reflected all three dimensions of the COM-B model. Seven barriers were reported by less than 20% of the studies.

Discussion:

This is the first systematic review to collate the healthcare professional reported barriers to the provision of smoking cessation advice in inpatient settings. Twenty barriers to smoking cessation interventions were identified in the 18 studies that were found, which reflected each dimension of the COM-B Model. The most commonly cited barriers were lack of time, knowledge, support and a perceived lack of patient motivation to quit. The findings are discussed subsequently as per the COM-B model.

Capability

In the area of Capability, most studies reported that clinicians lacked knowledge, skills and training to deliver smoking cessation advice. The most cited barrier was “Lack of knowledge”, cited in 56% of studies. The second most cited was a “Need for additional training”, cited in 39% of studies. Indeed, the finding that these attitudes were significantly less likely to provide cessation advice has repeatedly been shown in previous literature.^{14,15, 16} These findings highlight a clear need for enhancing clinicians’ self-efficacy to deliver such advice. Over a quarter of the publications reviewed acknowledge the problem of a “lack of skills” on the part of clinical practitioners to effectively promote smoking cessation interventions. This failing in communicative techniques is also evidenced by prior research on the subject, most notably in a 2013 Cochrane review by Carson et al, which shows that physicians who are trained in cessation delivery are more likely to use these skills and that their patients are more likely to quit smoking successfully.^{17, 18}

Interestingly, two separate publications in this review, acknowledged the negative impact that hospital facilities themselves can have on intervention effectiveness, encapsulated by the “absence of smoke-free hospital campus” in the inpatient setting. This concept is supported by previous research regarding patients’ smoking in a smoke-free hospital and this particular finding highlights the necessity of making the inpatient setting a tobacco-free zone.¹⁹ Overall, these findings not only match the capability dimension of COM-B, they also provide important evidence that these are subsumed within the policy context of the Behaviour Change Wheel, and that interventions to address these barriers will be rooted within an overall hospital or health services policy.

Opportunity

Most studies identified that a lack of time, support or resources were barriers to smoking cessation interventions. The most cited barrier was “Lack of time”, cited in 78% of studies, which was also the most cited barrier overall. The second most cited was a “Lack of support”, cited in 44% of studies. This perceived absence of adequate intervention support from colleagues hospital administration or from primary care physicians, could be seen as a policy issue, to be addressed. Perceived lack of professional support contributing to

an inability to deliver smoking cessation interventions has been identified in previous research and eight different papers here support this view.²⁰ The issue of time constraints being a leading obstacle to smoking cessation interventions has been well explored in previous literature and is supported by our findings here.^{21, 22} However, this review specifically highlights healthcare workers' difficulty with not possessing a clear hospital-directed mandate to intervene in smoking cessation. A heavy or overwhelming workload has been previously described by similar research.¹⁸ The managerial issue of sparse resources for smoking cessation interventions was identified in over a third of the publications reviewed. This widespread recognition was expected, given the number of previous publications that have referenced the issue.^{23, 24, 25}

It could be argued that a "lack of support", "lack of resources" and "absence of mandate to intervene" are barriers which are similar enough to be grouped as one heading, such as a "lack of structural support", but given how frequently each barrier was specifically referenced throughout the studies in the review, it was decided to cite each barrier individually, to provide maximum clarity for healthcare professionals. Similarly, we decided that the barrier of a "heavy or overwhelming workload" was conceptually different from a "lack of time", as the three papers, which referenced this barrier, cited it as a separate issue from the large workload. This allows us to highlight both of these issues as unique factors which need to be ameliorated to provide the best possible care in the inpatient setting.

Motivation

In the COM-B Model category of Motivation, the most cited barrier was a clinician-expressed belief in a "Lack of patient motivation", cited in 44% of studies. This had been identified by various publications as a substantial factor to poor provision of smoking cessation interventions and so, it is unsurprising that it was reported in the papers reviewed.^{9, 23, 26, 27} This perception stands in sharp contrast to patient reports and behaviour; in numerous studies, a majority of patients (typically around 70%) want to quit and most are willing to make a quit attempt. Consistent with this, cessation interventions that use proactive recruitment at the population level typically enrol a large percentage of eligible smokers.^{28, 29, 30} The second most cited barrier was a "Lack of confidence", cited in 38% of studies. This lack of clinical confidence in addressing patient's smoking practices is noteworthy as previous research had suggested that healthcare workers were largely confident and willing to raise the topic of smoking cessation with patients.^{23, 31, 32} Our review indicates that a large portion of healthcare workers still view themselves as lacking confidence in addressing this issue. Personal discomfort on the part of clinicians when broaching the subject of tobacco cessation interventions has been previously identified.³³ One study identified the barrier of smoking being seen as "a coping mechanism for patients" by healthcare workers, which has been similarly described in previous literature.³⁴ Prior research has demonstrated that providing training to physicians and other healthcare workers substantially boosts their efficacy, which then translates into improved cessation intervention delivery.¹⁸ It is possible that such attitudes could be addressed at an earlier stage, with students being trained to provide cessation counselling prior to qualification.³⁵

This attitude was seen as an altruistic act on the part of the healthcare professional and is interesting to note as it strays from the generally accepted view that all tobacco use, by inpatients, should be ended. These deficits could be ameliorated through implementation of targeted education and training programs for healthcare providers.

Not viewing smoking cessation intervention as a priority has been previously reported³⁶ with over a quarter of publications in the present review acknowledging this barrier. This attitude requires examination at a training and educational level to ensure adequate provision is made to aid patients in quitting smoking. The potential barrier of insufficient healthcare worker motivation or interest, which was described by four different publications, also has precedence in previous research.^{37, 38} This belief is heavily linked with the reported belief that healthcare workers require financial reward or career recognition to initiate smoking cessation interventions, which was also identified in four studies in our review, as a “lack of incentive”. This attitude runs contrary to the typically altruistic notion of healthcare workers, but it also has been cited in previous literature, especially in the outpatient setting.^{21, 28} Our review demonstrates that this perceived insubstantial incentive, for addressing smoking cessation, is equally present in the inpatient environment, albeit this may depend on the healthcare system in which professionals are employed.

Four publications reviewed cited the scepticism healthcare workers may have regarding smoking cessation intervention effectiveness. This was seen as a tangible obstacle to delivery of interventions and is another attitudinal belief identified by our review, which is congruent with previous research on the subject.³⁹ It is interesting to note that three of the reviewed studies detailed the negative impact a physician’s own smoking history could have on the success of cessation intervention. While healthcare worker tobacco use has been reported before³³, it is interesting that this personal practice would impact on providing optimal care for patients. A previous research study, in Syria, showed that physicians who smoke were less likely to deliver cessation interventions, support non-smoking policies and believe that smoking was harmful.⁴⁰ This suggests that to increase the effect this potential barrier has upon future interventions, healthcare workers should be mindful of not permitting their own personal tendencies and habits from negatively affecting patient care.

The one noted instance of “social pressure” being seen as a barrier to a healthcare worker providing smoking cessation intervention is unusual. Although there is precedence for it in the literature, it may be specific to the demographic of male physicians in China, where these studies were carried out.^{41, 42} Future research should investigate whether this barrier is encountered in other regions.

Finally, three studies expressed the belief that healthcare workers’ “negative past intervention experience” could impact the success of smoking cessation interventions. This viewpoint has been identified by previous research on the subject.²⁸ The fact that such a small portion of our studies reviewed identified

this (17%) suggests that it is perhaps not as pressing a failing as some of the more common barriers which are categorised under the banner of Motivation. Nevertheless, to achieve the optimum outcomes for smoking cessation interventions, each of the twenty barriers identified by this review must be considered as potential areas for improvement, in the inpatient setting.

An interesting point to note is viewing these various studies in the context of self-efficacy to deliver cessation interventions. Several of the barriers identified in the study detail a failing in healthcare professional efficacy, such as “lack of confidence”, “lack of healthcare worker interest or motivation” and “lack of incentive”. Negative past experiences likely reflect poor efficacy, due to awareness of one’s lack of expertise and/or lack of success in getting patients to quit, which makes the physician reluctant to intervene in the future. For healthcare workers to provide the optimum care for patients, it is crucial that each identifies the personal efficacy areas, in which they can improve, to correctly deliver clear and effective intervention advice.

Implications and limitations

These results are not only useful to practicing healthcare workers, but also for healthcare managers and educators, as they clearly set out the areas of inpatient care that could be addressed through extra training in providing smoking cessation interventions. In contrast to previous research which investigated perceived barriers among physicians¹¹, or nurses^{10, 17, 22}, this systematic review identifies barriers synonymous with all healthcare workers in the inpatient setting, including doctors, nursing staff, caregivers, midwives and counsellors. However, the limitation inherent in the study design is that by focusing specifically upon the inpatient setting, it is not possible to assess the barriers to providing smoking cessation services in the primary care setting or in community outreach programs. Notably, similar barriers have been reported in primary care (Vogt et al, 2005)⁴³. Like all systematic literature reviews, this research is also limited by the quality of the data reviewed. Another limitation is that through utilizing the COM-B model, there may be certain barriers that were outside of the scope of this paper. One study, by Goldstein et al, details particular efforts in smoking control in the hospital setting (implementing smoke-free policies in multiple hospitals and identifying smoking cessation programs available to healthcare employees, but it’s findings are outside of the framework of the COM-B model and, as such, are unsuitable for inclusion in our results.⁴⁴ A further limitation is that the current analysis does not provide any weighting to the studies, or indeed, to study quality. Future work could address these limitations. A strength of the study is the reporting of barriers within a behaviour change framework, that will guide future interventions. Implementation of smoking cessation interventions into inpatient settings, accounting for barriers as reported here, should be a priority.

Conclusion:

This review highlights the impediments, attitudes and beliefs that can act as barriers to the provision of smoking cessation, in the hospital inpatient setting.

These perceived barriers range from administrative issues of resource allocation, to clinical practitioners' ingrained beliefs, to aspects of social and professional discomfort. To address and ameliorate these barriers to the provision of smoking cessation interventions, changes need to be multidisciplinary and across the spectrum of hospital departments. For example, the time constraints that healthcare workers described in the review could be best solved at the managerial level, while patient resistance to treatment is easier to address in the clinical ward setting. **Of the variety of options for improving hospital management of tobacco cessation, one suggested solution is the implementation of "opt-out" programmes, which have been explored in several recent research papers (Faseru et al. [2017], Kotz [2017]). This practice involves healthcare professionals providing smoking-cessation treatment to every tobacco-smoking patient, regardless of their desire to quit. This practice of offering smoking cessation resources to every applicable inpatient may help to alleviate the burden on the cessation barriers identified in this review and further research studies could investigate this option, while targeting the noted barriers.** This systematic review serves to emphasize the need for further education and training of healthcare professionals, in the inpatient setting, to maximise the effectiveness of smoking cessation interventions and to minimise the occurrence of tobacco-related disease.

Table 1 – Overview of Studies

Author	Year	Sample	Methods	Reported Barriers
Beenstock, Jane et. al ⁴⁵	2012	1,358 Midwives in northeast England surveyed. 364 included in analysis.	Self-completed questionnaire on implementation difficulties of smoking cessation in pregnancy. Quantitative study.	Personal discomfort; Lack of knowledge; Lack of time; Lack of resources; Lack of Healthcare Worker interest or motivation and Absence of mandate to intervene.
Ceraso, Marion et. al ⁴⁶	2009	103 male physicians in China.	Self-completed questionnaire of smoking-related knowledge, attitudes, behaviours and patient practices. Quantitative study.	Physician smoking history; Social pressure and Need for additional training.
Chan, Sophia et. al ⁴⁷	2007	2,888 hospital nurses in China. 1,690 included in analysis.	Self-completed questionnaire, based on the 5 A's (Ask, Advise, Assess, Assist and Arrange). Quantitative study.	Lack of patient motivation; Heavy or overwhelming workload; Lack of time; Lack of resources; Lack of knowledge; Lack of skills; Cessation intervention not viewed as priority; Lack of incentive; Lack of confidence; Lack of support; Negative past intervention experience; Smoking viewed as coping mechanism for patients and Personal discomfort.
Duffy, Sonia et al ⁴⁸	2006	89 inpatient veterans and 108 staff caregivers in Michigan.	Questionnaire on smoking practices, cessation services and quit attempts. Quantitative study.	Personal discomfort; Lack of time; Lack of confidence; Need for additional training and Absence of smoke-free hospital campus.
Gomm, Murray et al	2002	196 nurses in Australia. 127	Self-completed questionnaire on cessation interventions, beliefs and	Need for additional training and Lack of confidence.

49		responses analysed.	practices. Quantitative study.	
Houghton, Chad et al ⁵⁰	2008	439 perioperative nurses in US.	Questionnaire on tobacco use intervention attitudes and beliefs. Quantitative study.	Lack of confidence; Healthcare Workers sceptical of interventions' effectiveness; Lack of knowledge; Lack of time and Personal discomfort.
Katz, David et al ⁵¹	2013	40 inpatient nurses at veterans' hospital in Michigan	Semi-structured interviews, regarding the 5A's implementation. Qualitative study.	Lack of time; Lack of support and Lack of patient motivation.
Katz, David et al ⁵²	2016	164 veterans' hospital nurses surveyed. 33 nurses interviewed.	Pre- and Post-intervention survey, along with Post-intervention semi-structured interviews. Qualitative study.	Lack of skills; Lack of patient motivation; Lack of time; Lack of resources; Absence of smoke-free hospital campus; Lack of confidence; Cessation intervention not viewed as priority; Healthcare Workers sceptical of interventions' effectiveness and Lack of support.
Lam, Tai Hing et al ⁵³	2010	2,869 HCPs in nine different hospitals in the Guangzhou region in China surveyed.	Self-completed questionnaire to investigate smoking cessation intervention practices. Quantitative study.	Lack of patient motivation; Heavy or overwhelming workload; Lack of time; Lack of resources; Lack of skills; Lack of knowledge; Lack of incentive; Negative past intervention experience; Lack of confidence; Lack of support and Personal discomfort.
Li, I-Chuan et al ⁵⁴	2014	16 nurse-counsellors in northern Taiwan.	Face-to-face interviews, with semi-structured, open-ended questions on smoking cessation interventions. Qualitative study.	Lack of support; Lack of time and Lack of resources.

McCarty, Maribet et al 55	2001	97 nurses in the Minnesota area (US).	Focus group interviews with staff nurses to explore reasons for low rate of smoking cessation advice. Qualitative study.	Need for additional training; Lack of knowledge; Healthcare Worker sceptical of interventions' effectiveness; Lack of support; Lack of time and Physician smoking history.
Raupach, Tobias et al 56	2012	10 nurses and 5 physicians interviewed for barrier data.	Prospective intervention study assessing effects of implementing "standard operating procedure" cessation counselling to patients on cardiology wards. Qualitative study.	Need for additional training; Lack of knowledge; Lack of skills; Lack of time; Lack of support; Cessation intervention not viewed as priority; Personal discomfort; Physician smoking history and Lack of patient motivation.
Raupach, Tobias et al 57	2011	77 physicians at Gottingen University Hospital, Germany.	Self-completed questionnaire to identify perceived barriers to smoking cessation interventions. Quantitative study.	Need for additional training; Lack of incentive; Lack of time; Lack of Healthcare Worker interest or motivation and Lack of responsibility.
Schultz, Annette et al 58	2006	214 nurses across two Western Canadian hospitals.	Self-completed questionnaire on perceived motivators and barriers to addressing tobacco reduction with patients. Quantitative study.	Lack of patient motivation; Unwillingness to add to patient stress; Personal discomfort; Cessation intervention not viewed as priority; No difference due to poor prognosis and Lack of knowledge.
Smith, Patricia et al 59	2009	35 physicians, across eight hospitals in Ontario, Canada.	Self-completed questionnaire on smoking cessation interventions. Quantitative study.	Lack of time; Lack of patient motivation; Heavy or overwhelming workload; Lack of resources; Negative past intervention experience; Absence of mandate to intervene; Lack of knowledge; Need

				for additional training; Personal discomfort; Cessation intervention not viewed as priority; Healthcare Worker sceptical of interventions' effectiveness; Lack of confidence; Lack of incentive and Lack of support.
Sreedharan, J et al ⁶⁰	2010	108 nurses in Gulf Medical College, UAE.	Self-completed questionnaire on attitude and practice towards participation in anti-tobacco activities. Quantitative study.	Lack of time; Lack of patient motivation and Lack of Healthcare Worker interest or motivation.
Svavarsdottir, Margret et al ⁶¹	2006	864 nurses in Iceland.	Self-completed questionnaire on smoking behaviours. Quantitative study.	Lack of time; Lack of knowledge; Need for additional training; Absence of mandate to intervene and Lack of Healthcare Worker interest or motivation.
Whyte, Rosemary et al ⁶²	2006	12 nurses in Glasgow, Scotland.	Semi-structured interviews, Non-participant observation and the use of radio-microphone to record nurse-patient interactions. Qualitative study.	Lack of skills and Lack of knowledge.

Table 2 – Smoking Cessation Intervention Barriers, using the COM-B Behaviour Change Model

Capability	Number (%) of studies citing barrier
Lack of knowledge ^{45 47 50 53 55 56 58 59 61 62}	10 (56%)
Need for additional training ^{46 49 55 56 57 59 61}	7 (39%)
Lack of skills (eg. Communication skills) ^{47 52 53 56 62}	5 (28%)
Absence of smoke-free hospital campus ^{48 52}	2 (11%)
Opportunity	Number (%) of studies citing barrier
Lack of time ^{45 47 48 50 51 52 53 54 55 56 57 59 60 61}	14 (78%)
Lack of support (eg. from colleagues/ hospital admin/ primary care) ^{47 51 52 53 54 55 56 59}	8 (44%)
Lack of resources ^{45 47 52 53 54 59}	6 (33%)
Absence of mandate to intervene ^{45 59 61}	3 (17%)
Heavy or overwhelming workload ^{47 53 59}	3 (17%)
Motivation	Number (%) of studies citing barrier
Lack of patient motivation (ie. reluctant to quit, lack of compliance) ^{47 51 52 53 56 58 59 60}	8 (44%)
Lack of confidence ^{47 48 49 50 52 53 59}	7 (39%)
Personal discomfort (eg. Healthcare Worker unwilling to upset patient, risk damage to doctor-patient relationship) ^{45 48 50 56 58 59}	6 (33%)
Cessation intervention not viewed as priority ^{47 52 56 58 59}	5 (28%)
Lack of Healthcare Worker interest or motivation ^{45 57 60 61}	4 (22%)
Healthcare Worker sceptical of interventions' effectiveness ^{50 52 55 59}	4 (22%)
Lack of incentive (eg. recognition/reward) ^{47 53 57 59}	4 (22%)
Physician smoking history ^{46 55 56}	3 (17%)
Negative past intervention experience ^{47 53 59}	3 (17%)
Social pressure ⁴⁶	1 (6%)
Smoking viewed as coping mechanism for patients ⁴⁷	1 (6%)

References:

- ¹ World Health Organization (2003) "An International Treaty for Tobacco Control." Available at: <http://www.who.int/features/2003/08/en/> [Cited 18/11/16]
- ² Goodchild M, Nargis N, Tursan d'Espaignet E. (2016) Global economic cost of smoking-attributable diseases. *Tob Control*. 2017 Jan 30. Pii: tobaccocontrol-2016-053305. DOI: 10.1136/tobaccocontrol-2016-053305
- ³ World Health Organization (2017) "Tobacco Fact Sheet" Available at: <http://www.who.int/mediacentre/factsheets/fs339/en/> [Cited 30/09/17]
- ⁴ Rigotti NA, Clair C, Munafo MR, Stead LF. (2012) Interventions for smoking cessation in hospitalised patients. *Cochrane Database Syst Rev*. 2012 May 16;(5):CD001837. DOI: 10.1002/14651858.CD001837.pub3
- ⁵ Smith PM, Reilly KR, Houston Miller N, et al. (2002) Application of a nurse-managed inpatient smoking cessation program. *Nicotine Tob Res* 2002;4:211-22. Retrieved from <https://www.ncbi.nlm.nih.gov/pubmed/12096707>
- ⁶ McBride CM, Emmons KM, Lipkus IM. (2003) Understanding the potential of teachable moments: the case of smoking cessation. *Health Educ Res* 2003;18:156-70. Retrieved from <https://www.ncbi.nlm.nih.gov/pubmed/12729175>
- ⁷ Raupach et al. (2012) "Structured smoking cessation training for health professionals on cardiology wards: a prospective study" *European Journal of Preventative Cardiology* DOI: 10.1177/2047487312462803
- ⁸ Lawson PJ and Flocke SA. (2009) Teachable moments for health behavior change: a concept analysis. *Patient Educ Couns* 2009; 76: 25–30. DOI: 10.1016/j.pec.2008.11.002
- ⁹ Mohiuddin SM, Mooss AN, Hunter CB, et al. (2007) Intensive smoking cessation intervention reduces mortality in high risk smokers with cardiovascular disease. *Chest* 2007; 131: 446–452 Retrieved from <https://www.ncbi.nlm.nih.gov/pubmed/17296646>
- ¹⁰ Svavarsdóttir MH, Hallgrímsdóttir G. (2008) Participation of Icelandic nurses in smoking cessation counselling. *Journal of Clinical Nursing*. 2008 May 1;17(10):1335-41. Retrieved from <https://www.ncbi.nlm.nih.gov/pubmed/17419789>
- ¹¹ Berlin I. (2008) Physicians' perceived barriers to promoting smoking cessation. *Journal of Smoking Cessation*. 2008 Dec 3; 2: 92-100. DOI: <https://doi.org/10.1375/jsc.3.2.92>
- ¹² Katz D, Weg MV, Fu S, Prochazka A, Grant K, Buchanan L, Tinkelman D, Reisinger HS, Brooks J, Hillis SL, Joseph A, Titler M. (2009) A before-after implementation trial of smoking cessation guidelines in hospitalized veterans. *Implementation Science*. 2009 September DOI:10.1186/1748-5908-4-58
- ¹³ Michie S, van Stralen MM, West R. (2011) The behaviour change wheel: a new method for characterising and designing behaviour change interventions.

Implementation Science. 2011 Apr 23;6(1):1 Retrieved from <https://www.ncbi.nlm.nih.gov/pmc/articles/PMC3096582/>

¹⁴ Preechawong S, Vathesathogkit K, Suwanratsamee S. (2011) Effects of tobacco cessation counseling training on Thai professional nurses' self-efficacy and cessation counselling practices. *Pacific Rim Int J Nurs Res* 2011 ; 15(1) 3-12 Retrieved from http://www.trc.or.th/trcresearch/subpage/RS/TC_2554_10.pdf

¹⁵ Siddiqi K, Dogar OF, Siddiqi N. (2013) Smoking cessation in long-term conditions: is there "an opportunity in every difficulty"? *International Journal of Population Research*. Volume 2013. <http://dx.doi.org/10.1155/2013/251048> Retrieved from <https://www.hindawi.com/journals/ijpr/2013/251048/>

¹⁶ Forman J, Harris JM, Lorencatto F, McEwen A, Duaso MJ. (2017) National survey of smoking and smoking cessation education within UK midwifery school curricula. *Nicotine Tob Re*. 2017 May 1;19(5):591-596 DOI: 10.1093/ntr/ntw230

¹⁷ Berland A, Whyte NB, Maxwell L. (1995) Hospital nurses and health promotion. *Can J Nurs Res*. 1995 Winter;27(4):13-31 Retrieved from <https://www.ncbi.nlm.nih.gov/pubmed/8697269>

¹⁸ Carson KV, Verbiest ME, Crone MR, Brinn MP, Esterman AJ, Assendelft WJ, Smith BJ. (2012) Training health professionals in smoking cessation. *Cochrane Database Syst Rev*. 2012 May 16;(5):CD000214 Retrieved from <https://www.ncbi.nlm.nih.gov/pubmed/22592671>

¹⁹ Rigotti NA, Arnsten JH, McKool KM, Wood-Reid KM, Pasternak RC, Singer DE. (2000) Smoking by patients in a smoke-free hospital: prevalence, predictors and implications. *Preventative Medicine* 2000 Aug;31(2 Pt 1):159-66 Retrieved from <https://www.ncbi.nlm.nih.gov/pubmed/10938217>

²⁰ Lala R, Csikar J, Douglas G, Muarry J. (2017) Factors that influence delivery of tobacco cessation support in general dental practice: a narrative review. *J Public Health Dent*. 2017 Dec;77(1):47-53. DOI: 10.1111/jphd.12170.

²¹ Brotons C, Bjorkelund C, Bulc M, Ciurana R, Godycki-Cwirko M, Jurgova E, et al. (2005) Prevention and health promotion in clinical practice: the views of general practitioners in Europe. *Preventative Medicine* 2005 May; 40(5):595-601 Retrieved from <https://www.ncbi.nlm.nih.gov/pubmed/15749144>

²² Twardella D, Brenner H. (2005) Lack of training as a central barrier to the promotion of smoking cessation: A survey among general practitioners in Germany. *European Journal of Public Health* 2005 Apr;15(2): 140-145 Retrieved from <https://www.ncbi.nlm.nih.gov/pubmed/15941758>

²³ Sarna L, Bialous SA, Wells M, Kotlerman J, Wewers ME, Froelicher ES. (2009) Frequency of nurses' smoking cessation interventions: report from a national survey. *Journal of Clinical Nursing* 2009; 18, 2066-2077 DOI: 10.1111/j.1365-2702.2009.02796.x

²⁴ Kanodra NM, Pope C, Halbert CH, Silvestri GA, Rice LJ, Tanner NT. (2016) Primary care provider and patient perspectives on lung cancer screening. A

qualitative study. *Ann Am Thorac Soc* 2016 Nov;13(11):1977-1982 Retrieved from <https://www.ncbi.nlm.nih.gov/pubmed/27676369>

²⁵ Earnshaw SR, Richter A, Sorensen SW, Hoerger TJ, Hicks KA, Engelgau M, Thompson T, Narayan KM, Williamson DF, Gregg E, Zhang P. (2002) Optimal allocation of resources across four interventions for type 2 diabetes. *Med Decis Making*. 2002 Sep-Oct;22(5 Suppl):S80-91 Retrieved from <https://www.ncbi.nlm.nih.gov/pubmed/12369234>

²⁶ Cabana MD, Rand CS, Powe NR, Wu AW, Wilson MH, Abboud PA, Rubin HR. (1999) Why don't physicians follow clinical practice guidelines? A framework for improvement. *Journal of American Medical Association* 1999 Oct 20;282(15):1458-65 Retrieved from <https://www.ncbi.nlm.nih.gov/pubmed/10535437>

²⁷ McLeod D, Somasundaram R, Howden-Chapman P, Dowell AC. (2000) Promotion of smoking cessation by New Zealand general practitioners: a description of current practice. *New Zealand Medical Journal* 2000 Nov 24;112(1122):480-5 Retrieved from <https://www.ncbi.nlm.nih.gov/pubmed/11198538>

²⁸ Fu SS, Van Ryn M, Sherman SE, Burgess DJ, Noorbaloochi S, Clothier B, Taylor BC, Schlude CM, Burke RS, Joseph AM. (2014) Proactive tobacco treatment and population-level cessation: a pragmatic randomized clinical trial. *JAMA Intern Med*. 2014 May;174(5):671-7 Retrieved from <https://www.ncbi.nlm.nih.gov/pubmed/24615217>

²⁹ Tzelepis F, Paul CL, Wiggers J, Walsh RA, Knight J, Duncan SL, Lecathelinais C, Girgis A, Daly J. (2011) A randomised controlled trial of proactive telephone counselling on cold-called smokers' cessation rates. *Tob Control* 2011 20: 40-46 Retrieved from <http://tobaccocontrol.bmj.com/content/20/1/40>

³⁰ Meyer C, Ulbricht S, Baumeister SE, Schumann A, Ruge J, Bischof G, Rumpf HJ, John U. (2008) Proactive interventions for smoking cessation in general medical practice: a quasi-randomized controlled trial to examine the efficacy of computer-tailored letters and physician-delivered brief advice. *Addiction*. 2008 Feb;103(2):294-304. Retrieved from <https://www.ncbi.nlm.nih.gov/pmc/articles/PMC2253708/>

³¹ Willaing I, Ladelund S. (2004) Smoking behaviour among hospital staff still influences attitudes and counselling on smoking. *Nicotine & Tobacco Research*. 2004 Apr;6(2):369-75 Retrieved from <https://www.ncbi.nlm.nih.gov/pubmed/15203810>

³² Sarna L, Wewers ME, Brown JK, Lillington L, Brecht ML. (2001) Barriers to tobacco cessation in clinical practice: report from a national survey of oncology nurses. *Nursing Outlook* 2001 Jul-Aug;49(4):166-72 Retrieved from <https://www.ncbi.nlm.nih.gov/pubmed/11514788>

³³ Pipe A, Sorensen M, Reid R. (2009) Physician smoking status, attitudes toward smoking, and cessation advice to patients: an international survey. *Patient Educ Couns* 2009 Jan;74(1):118-23 DOI: 10.1016/j.pec.2008.07.042

³⁴ Acquavita SP, Talks A, Fiser K. (2017) Facilitators and barriers to cigarette smoking while pregnant for women with substance use disorders. *Nicotine Tob Res*. 2017 May 1;19(5):555-561. DOI: 10.1093/ntr/ntw268

-
- ³⁵ Kumar A, Ward KD, Mellon L, Gunning M, Stynes S, Hickey A, Conroy R, Graduate Entry Programme 2014-2019, Cormican L, Sreenan S, Doyle F. (2016) Medical student intervention to promote effective nicotine dependence and tobacco healthcare: Graduate entry programme (MIND-THE-GAP): Feasibility randomised trial. Manuscript submitted for publication.
- ³⁶ Rice VH, Hartmann-Boyce J, Stead LF. (2013) Nursing interventions for smoking cessation. *Cochrane Database Syst Rev.* 2013 Aug 12;(8):CD001188. DOI: 10.1002/14651858.CD001188.pub4.
- ³⁷ Borrelli B, Hecht JP, Papandonatos GD, Emmons KM, Tatevosian LR, Abrams DB. (2001) Smoking-cessation counselling in the home. Attitudes, beliefs and behaviors of home healthcare nurses. *American Journal of Preventative Medicine.* 2001 Nov;21(4):272-7 Retrieved from <https://www.ncbi.nlm.nih.gov/pubmed/11701297>
- ³⁸ Hall S, Vogt F, Marteau TM. (2005) A short report: survey of practice nurses' attitudes towards giving smoking cessation advice. *Family Practice* 2005 Dec;22(6):614-6 Retrieved from <https://www.ncbi.nlm.nih.gov/pubmed/16055470>
- ³⁹ Tong EK, Strouse R, Hall J, Kovac M, Schroeder SA. (2010) National survey of U.S. health professionals' smoking prevalence, cessation practices, and beliefs. *Nicotine Tob Res.* 2010 Jul;12(7):724-33 DOI: 10.1093/ntr/ntq071
- ⁴⁰ Asfar T, Al-Ali R, Ward KD, Vander Weg MW, Maziak W. (2011) Are primary health care providers prepared to implement an anti-smoking program in Syria? *Patient Educ Couns.* 2011 Nov;85(2):201-5. Retrieved from <https://www.ncbi.nlm.nih.gov/pubmed/21168300>
- ⁴¹ Cheng IS, Ernster VL, He GQ. (2000) Tobacco smoking among 847 residents of East Beijing, People's Republic of China. *Berkeley (CA): University of California Press; 2000* Retrieved from <https://www.ncbi.nlm.nih.gov/pubmed/2278766>
- ⁴² Kohrman M. (2004) Should I quit? Tobacco, fraught identity, and the risks of governmentality in urban China. *Urban Anthropol* 2004;33(2-4):211-45 Retrieved from https://anthropology.stanford.edu/sites/default/files/kohrman_shouldiquit.pdf
- ⁴³ Vogt et al. (2005) General practitioner's and family physicians' negative beliefs and attitudes towards discussing smoking cessation with patients: A systematic review. *Addiction.* 2005;100:1423-31. DOI: 10.1111/j.1360-0443.2005.01221.x
- ⁴⁴ Goldstein et al. (1992) Hospital efforts in smoking control: Remaining barriers and challenges. *Journal of Family Practice.* 1992;34:729-34. Retrieved from <http://europepmc.org/abstract/med/1593247>
- ⁴⁵ Beenstock J, Sniehotta FF, White M, Bell Rm Milne EM, Araujo-Soares V. (2012) What helps and hinders midwives in engaging with pregnant women about stopping smoking? A cross-sectional survey of perceived implementation difficulties among midwives in the North East of England. *Implement Sci.* 2012 Apr 24;7:36 DOI: 10.1186/1748-5908-7-36 Retrieved from <https://www.ncbi.nlm.nih.gov/pubmed/22531641>

-
- ⁴⁶ Ceraso M, McElroy JA, Kuang X, Vila PM, Du X, Lu L, Ren H, Qian N, Jorenby DE, Fiore MC. (2009) Smoking, barriers to quitting, and smoking-related knowledge, attitudes, and patient practices among male physicians in China. *Prev Chronic Dis.* 2009 Jan;6(1):A06. Epub 2008 Dec 15 Retrieved from <https://www.ncbi.nlm.nih.gov/pubmed/19080012>
- ⁴⁷ Chan SS, Sarna L, Wong DC, Lam TH. (2007) Nurses' tobacco-related knowledge, attitudes, and practice in four major cities in China. *J Nurs Scholarsh.* 2007;39(1):46-53 Retrieved from <https://www.ncbi.nlm.nih.gov/pubmed/17393965>
- ⁴⁸ Duffy SA, Reeves P, Hermann C, Karvonen C, Smith P. (2008) In-hospital smoking cessation programs: what do VA patients and staff want and need? *Appl Nurs Res.* 2008 Nov;21(4):199-206 DOI: 10.1016/j.apnr.2006.11.002
- ⁴⁹ Gomm M, Lincoln P, Egeland P, Rosenberg M. (2002) Helping hospitalised clients quit smoking: a study of rural nursing practice and barriers. *Aust J Rural Health.* 2002 Feb;10(1):26-32 Retrieved from <http://onlinelibrary.wiley.com/doi/10.1111/j.1440-1584.2002.tb00005.x/abstract>
- ⁵⁰ Houghton CS, Marcukaitis AW, Shirk Marienau ME, Hooten M, Stevens SR, Warner DO. (2008) Tobacco intervention attitudes and practices among certified registered nurse anesthetists. *Nurs Res.* 2008 Mar-Apr;57(2):123-9. DOI: 10.1097/01.NNR.0000313481.39755.ea.
- ⁵¹ Katz DA, Holman J, Johnson S, Hillis SL, Ono S, Stewart K, Paez M, Fu S, Grant K, Buchanan L, Prochazka A, Battaglia C, Titler M, Vander Weg MW. (2013) Implementing smoking cessation guidelines for hospitalized veterans: effects on nurse attitudes and performance. *J Gen Intern Med.* 2013 Nov;28(11): 1420-9. DOI: 10.1007/s11606-013-2462-7. Epub 2013 May 7.
- ⁵² Katz DA, Stewart K, Paez M, Holman J, Adams SL, Vander Weg MW, Battaglia CT, Joseph AM, Titler MG, Ono S. (2016) "Let me get you a nicotine patch": Nurses' perceptions of implementing smoking cessation guidelines for hospitalized veterans. *Mil Med.* 2016 Apr;181(4):373-82. DOI: 10.7205/MILMED-D-15-00101.
- ⁵³ Lam TH, Jiang C, Chan YF, Chan SS. (2011) Smoking cessation intervention practices in chinese physicians: do gender and smoking status matter? *Health Soc Care Community.* 2011 Mar;19(2):126-37. DOI: 10.1111/j.1365-2524.2010.00952.x Epub 2010 Sep 9.
- ⁵⁴ Li IC, Lee SY, Chen CY, Jeng YQ, Chen YC. (2014) Facilitators and barriers to effective smoking cessation: counselling services for inpatients from nurse-counsellors' perspectives – a qualitative study. *Int J Environ Res Public Health.* 2014 May 6;11(5):4782-98. DOI: 10.3390/ijerph110504782.
- ⁵⁵ McCarty MC, Zander KM, Hennrikus DJ, Lando HA. (2001) Barriers among nurses to providing smoking cessation advice to hospitalized smokers. *Am J Health Promot.* 2001 Nov-Dec;16(2):85-7, ii. Retrieved from <http://journals.sagepub.com/doi/abs/10.4278/0890-1171-16.2.85?journalCode=ahpa>
- ⁵⁶ Raupach T, Falk J, Vangelis E, Schiekirka S, Rustler C, Grassi MC, Pipe A, West R. (2014) Structured smoking cessation training for health professionals on

cardiology wards: a prospective study. *Eur J Prev Cardiol.* 2014 Jul;21(7):915-22. DOI: 10.1177/2047487312462803. Epub 2012 Sep 24

⁵⁷ Raupach T, Merker J, Hasenfuss G, Andreas S, Pipe A. (2011) Knowledge gaps about smoking cessation in hospitalized patients and their doctors. *Eur J Cardiovasc Prev Rehabil.* 2011 Apr;18(2):334-41. DOI: 10.1177/1741826710389370. Epub 2011 Feb 11.

⁵⁸ Schultz AS, Johnson JL, Bottorff JL. (2006) Registered nurses' perspectives on tobacco reduction: views from Western Canada. *Can J Nurs Res.* 2006 Dec;38(4):192-211 Retrieved from <http://www.ingentaconnect.com/content/mcgill/cjnr/2006/00000038/00000004/art00014?crawler=true>

⁵⁹ Smith PM, Sellick SM, Brink P, Edwardson AD. (2009) Brief smoking cessation interventions by family physicians in northwestern Ontario rural hospitals. *Can J Rural Med.* 2009 Spring;14(2):47-53 Retrieved from <https://www.ncbi.nlm.nih.gov/pubmed/19379627>

⁶⁰ Sreedharan J, Muttappallymyalil J, Venkatramana M. (2010) Nurses' attitude and practice in providing tobacco cessation care to patients. *J Prev Med Hyg.* 2010 Jun;51(2):57-61. Retrieved from <https://www.ncbi.nlm.nih.gov/pubmed/21155406>

⁶¹ Svavarsdottir MH, Hallgrimsdottir G. (2008) Participation of Icelandic nurses in smoking cessation counselling. *J Clin Nurs.* 2008 May;17(10):1335-41. Epub 2007 Apr 5. Retrieved from <https://www.ncbi.nlm.nih.gov/pubmed/17419789>

⁶² Whyte RE, Watson HE, McIntosh J. (2006) Nurses' opportunistic interventions with patients in relation to smoking. *J Adv Nurs.* 2006 Sep;55(5):568-77. Retrieved from <https://www.ncbi.nlm.nih.gov/pubmed/16907788>