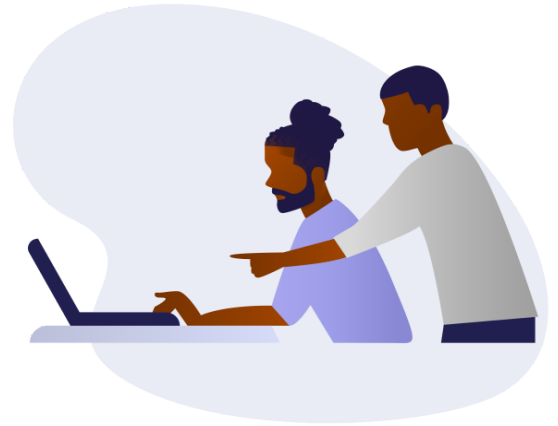


# Amacebo okufunda kwizixhobo zobuchwepheshe

Ukufunda kwizixhobo zobuchwepheshe yindlela ezisa amava amatsha kwisininzi sethu. Kuza kunyanzeleka ukuba sivelele indlela esifunda ngayo ngohlobo olwahlukileyo.

Singanamathandabuzo ngezinto ezilindelekileyo nokuba siza kuqhuba njani. Ngequbuliso sinexesha elingacwangciswa ngokucacileyo kwaye kungenzeka singaqiniseki ukuba siza kuqhubeka njani ngezifundo zethu. Sicebisa ukuba ulandele inkqubo yexesha lezifundo zakho elicwangcisiweyo ukufumana nokufunda izifundo zakho, imisebenzi ekufuneka yenziwe nekufuneka ingenisiwe efumaneka kwikhasi

le*RUconnected* kwisifundo ngasinye kumaxesha amiselweyo. Oku kuza kukunceda ukuba ucwangcise iintsuku zakho kwaye kukuthintele ukuba ungashiyeki emva emsebenzini wakho. Kananjalo, sinako ukuthabatha amanyathelo athile okuqinisekisa ukuba siyaphumelela ekufundeni kwizixhobo zobuchwepheshe. Nanga amacebo alishumi (10) okunceda ukuba uhlale unogqaliso kumsebenzi nokuba uphumelele ngeli xesha lokufudukela ekufundeni ngezixhobo zobuchwepheshe.



<p><b>Icebo lokuqala: Khuphela iApp ka<i>RUconnected</i> kwisixhobo sobuchwepheshe sokufundela</b></p>	<p>Khuphela iApp ka<i>RUconnected</i> ukuze uhlale uqhagamshelana noogxa bakho ofunda nabo kunye nabafundisi-ntsapho. Oku kuza kukunceda ukuba uhlale usemgceni nomsebenzi wakho nokulindelekileyo kuwe.</p>
<p><b>Icebo lesibini: Cingisisa ngendawo ofundela kuyo</b></p>	<p>Khetha indawo eqhelekileyo nothi uzive ukulungele ukufunda kuyo kwaye ukuba unako, uziqhelanise nokufundela kuloo ndawo. Ukuba ufundela kwindawo esetyenziswa nangabanye abantu, nceda ubazise. Ukuba unako ukunciphisa iziphazamiso kuloo ndawo, yenza njalo. Nceda uzame ukungenzi ezinye izinto ngeli xesha ufunda.</p>
<p><b>Icebo lesithathu: Gcina isicwangciso sokufunda</b></p>	<p>Umfundisi-ntsapho wenu uza kwabelana nani ngemisebenzi yesikolo kwizixhobo zobuchwepheshe. Zama ukusebenzisa ixesha ubuza kuya ngalo eklasini ukuqwalasela imisebenzi yesikolo. Fumana oogxa bakho abambalwa eniza kusebenzisana kwaye abaza kuncedisana ukuba ungaphambuki kwisicwangciso sakho sokufunda. Ngaloo ndlela, niza kukwazi ukuncedisana nithathe uxanduva</p>

	ngesicwangciso senu sokufunda kwaye ninako ukubuzana imibuzo xa kunyanzelekile.
<b>Icebo lesine: Bhala phantsi okufundileyo</b>	Ukuphinda-phinda ukubukela ividiyo eshicilelweyo, ukuphinda-phinda ukumamela iintetho ezishicilelweyo nokuba ne <i>Power Point slides</i> akuthethi ukuba akunangakubhali phantsi okufundileyo. Kungenjalo, uza kuphinda-phinda ukubukela, uphinda-phinde ukumamela okanye uphinda-phinde ukufunda kakhulu. Eli ayilocebo elibalaselayo lokufunda. Ukubhala phantsi ngesandla okufundileyo kuza kukunceda ukuba uqonde ngcono okufundileyo kwaye kuza kukunika ukuphumla ekujamelaneni nezobuchwepheshe. Misa okushicilelweyo kwaye uphinde ubuyele emva kuko xa kunyanzelekile.
<b>Icebo lesihlanu: Funda ii-imeyili nezibhengezo rhoqo</b>	Ukujonga i-imeyili yakho nezibhengezo zesifundo kubaluleke ngaphezulu xa kusetyenziswa izixhobo zobuchwepheshe njengendlela yokufunda. Yindlela engundoqo umfundisi-ntsapho wenu aza kunxulumana nani ngayo. Zama ukuzijonga ezi ndlela zonxibelelwano yonke imihla.
<b>Icebo lesithandathu: Nxulumana nabafundisi-ntsapho bakho xa kukhona isidingo</b>	Eklasini kulapho nijongeni ubuso ngobuso nomfundisi-ntsapho wenu, umfundisi-ntsapho wenu ulapha phambi kwenu kwaye unako ukuqinisekisa ukuba niyakuqonda oko akufundisayo. Oku akwenzeki xa nifundiswa kwizixhobo zobuchwepheshe. Yiyo loo nto kubalulekile ukuba uqhagamshelane nomfundisi-ntsapho wakho ngendlela yonxulumano ekhethwe nguye ukuba kukhona into ongayiqondiyo.
<b>Icebo lesixhenxe: Hlala uqhagamshelana noogxa bakho ofunda nabo</b>	Hlala unxibelelana noogxa bakho ofunda nabo usebenzise amakhasi engxoxo ku <i>RUconnected</i> okanye ezinye iindlela zonxibelelwano. Masincedane kwaye sixhasane kweli lixa.
<b>Icebo lesibhozo: Zilungiselele ukufunda kwi-intanethi, nangaphandle kwayo</b>	Cwangcisela ukufunda ngaphandle kwe-intanethi. Sebenzisa ixesha lakho ngokufanelekileyo xa uthe wakwazi ukufumana i-intanethi eyomeleleyo nethembakeleyo. Khuphela okanye gcina amaxwebhu okufunda oza kuwazisebenzisa xa uphumile kwi-intanethi. Unako nokugcina imisebenzi namaxwebhu okufunda akho esikolo kwiApp ka <i>RUconnected</i> ukuze ufunde xa ungekho kwi-intanethi.
<b>Icebo lesithoba: Cingela abanye abantu kwaye ukulungiselele ukutshintsha kwezinto</b>	Ukufunda ngokusebenzisa izixhobo zobuchwepheshe ngeli lixa akuyonto egqibeleleyo nefunwayo nangubani na. Yiba novelwano koogxa bakho nabafundisi-ntsapho bakho njengokuba bejamelene nesimo esiguquguqukayo. Zilungiselele ukutshintsha kwezinto. Nceda ucinge ukuba abafundisi-ntsapho benu bafumana ii-imeyili ezininzi, yiyo

	loo nto kufuneka ukuba kwiimbalelwano zakho uzazise nangegama, ucacise igama okanye inombolo yesifundo sakho, kwaye ube nomonde.
<b>Icebo leshumi: Cela uncedo</b>	Kuyaqondakala ukuba ungazibhaqa unokubhideka ngokufudukela ekufundeni ngezixhobo zobuchwepheshe phakathi kwisiqingatha sonyaka. Musa ukoyika ukucela uncedo. Sebenzisa inkxaso ekhoyo, iindlela zonxibelelwano kunye neeyure zokusebenza ozinikwe ngabahlohi benu.