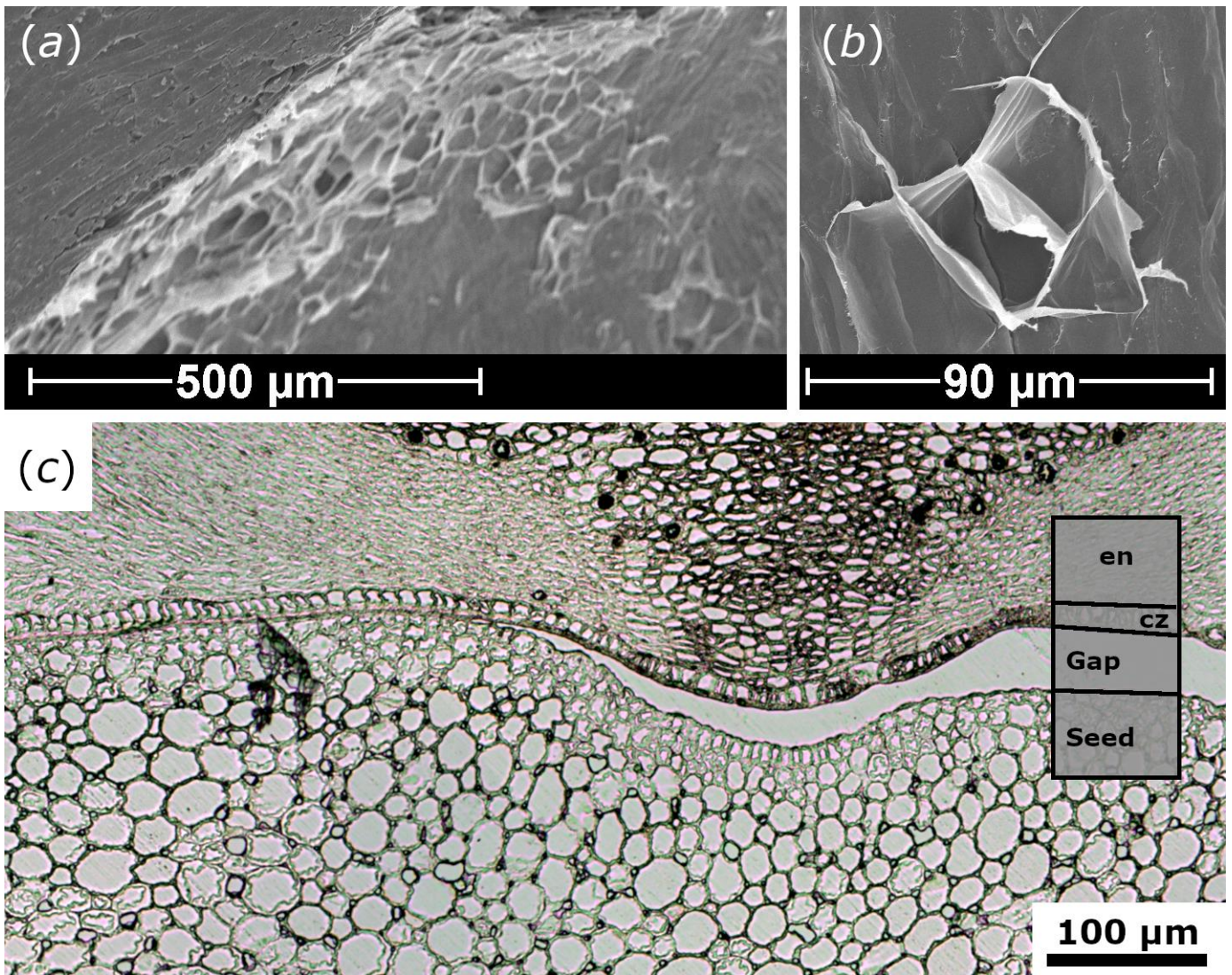


SUPPORTING INFORMATION FOR

**A seed flying like a bullet: Ballistic seed dispersal in Chinese witch-hazel
(*Hamamelis mollis* OLIV., Hamamelidaceae)**

Simon Poppinga, Anne-Sophie Böse, Robin Seidel, Linnea Hesse, Jochen Leupold,
Sandra Caliaro, Thomas Speck

Journal of the Royal Society Interface



Supplementary figure S1. Details of the connection zone between endocarp and seed. SEM figures (a) and (b) highlight the occurrence of comparatively large and continuous structural remnants (cf. figure 2d) of the connection zone on the endocarp surface after seed release. (c) LM figure (without staining) of a 4 µm thick semi-thin cross section of a mature fruit prior to seed release. The endocarp (en) and seed as well as the connection zone (cz) are well visible (see indications in the box on the right). The seed has partly detached from the endocarp surface and a gap has formed, leaving the connection zone attached to the endocarp.