

Electronic supplementary material

‘Actuarial senescence in a long-lived orchid challenges our current understanding of ageing’

Dahlgren *et al.* Submitted to *Proc R Soc B Biol Sci* 2016

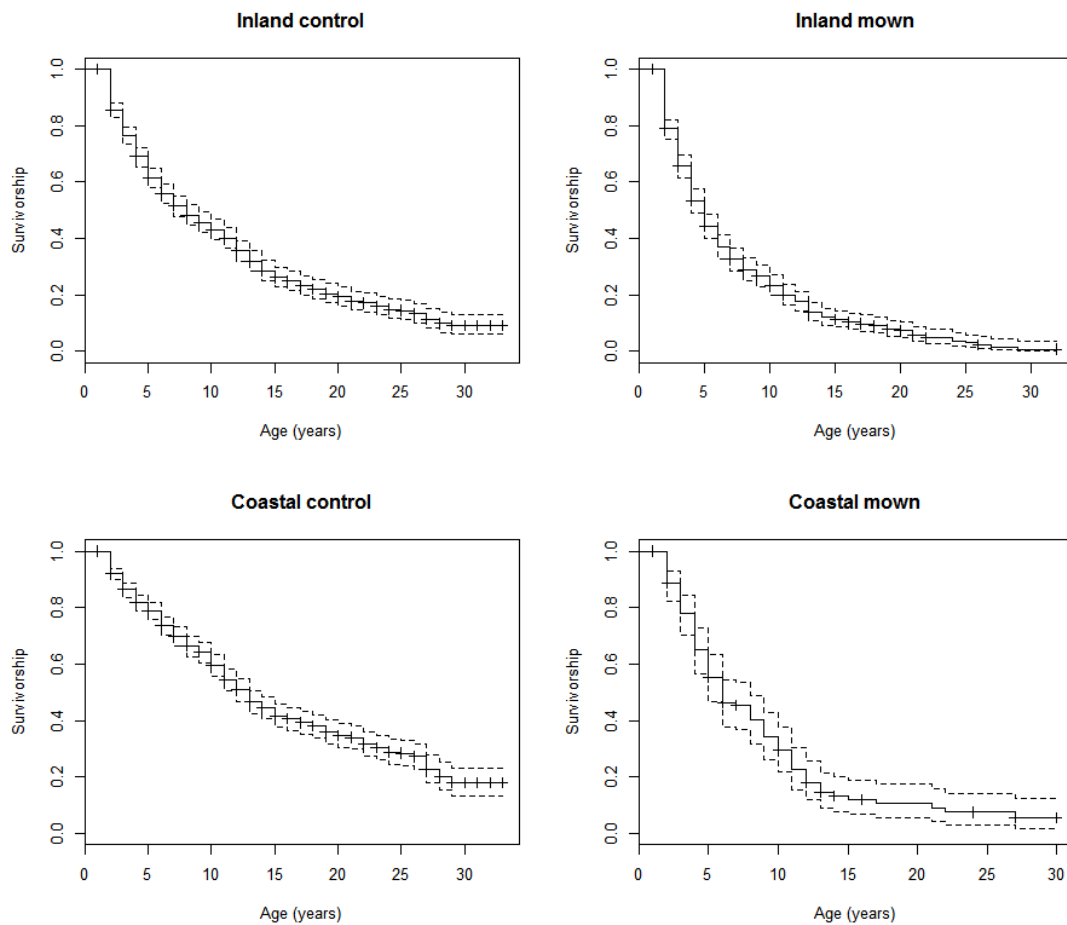


Figure S1. Plots of the Kaplan-Meier estimators of the survivorship curves.

Survival probability is calculated as the number of plants observed surviving to each age divided by the number of plants at risk of dying. Plants that were not followed until death are considered “censored” after they were last observed, and are not then counted in the denominator. Dashed lines are 95% confidence intervals.

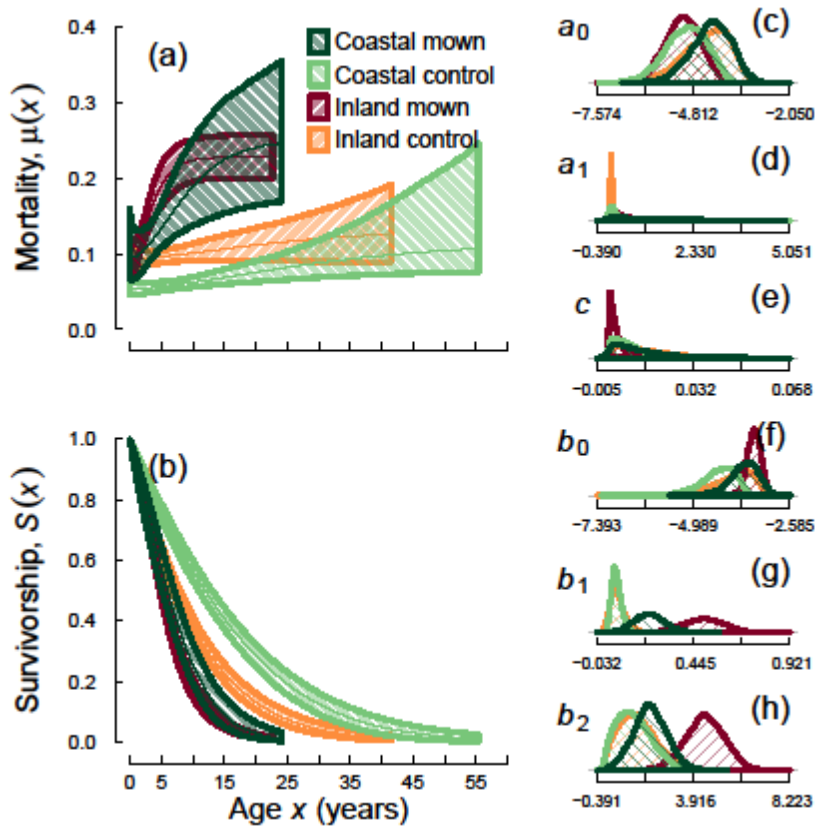


Figure S2. Mortality (a) and survivorship (b) over age since first reproduction, and parameter values (c-h) with 95% credible intervals of the second-best fitting mortality model (logistic including reproductive investment and no Makeham term). Mortality and survivorship are presented from the first reproductive event (age = 0) until the age where survivorship is $S(x) = 0.01$ (when the model predicts that 99% of the cohort is dead).

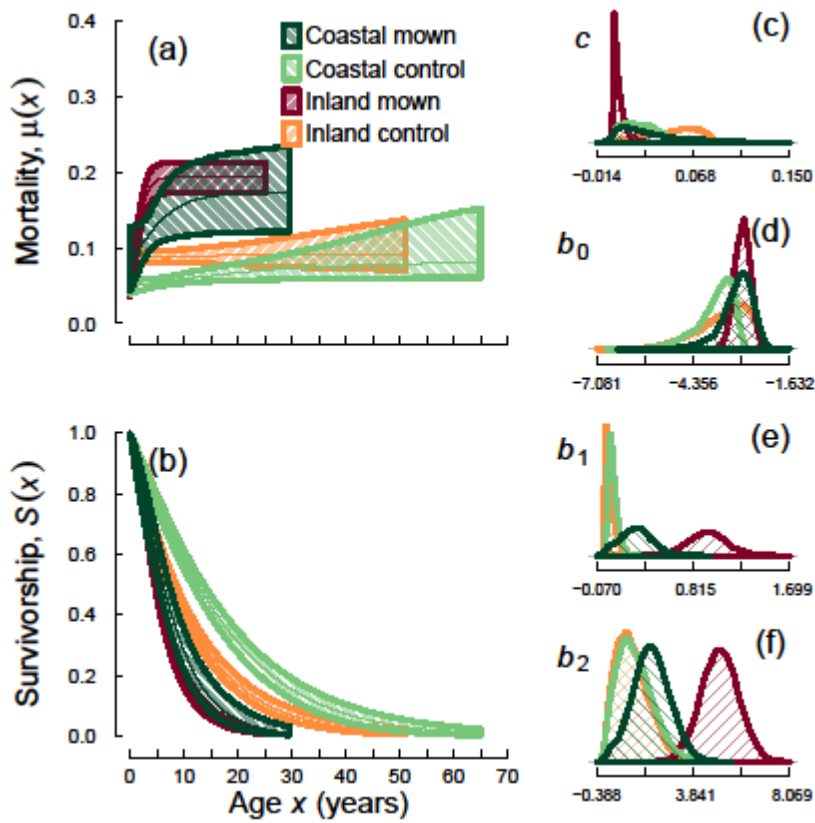


Figure S3. Mortality (a) and survivorship (b) over age since first reproduction, and parameter values (c-f) with 95% credible intervals of the best-fitting mortality model that did not include reproductive investment (the third-best fitting model overall; logistic with a Makeham term). Mortality and survivorship are presented from the first reproductive event (age = 0) until the age where survivorship is $S(x) = 0.01$ (when the model predicts that 99% of the cohort is dead).

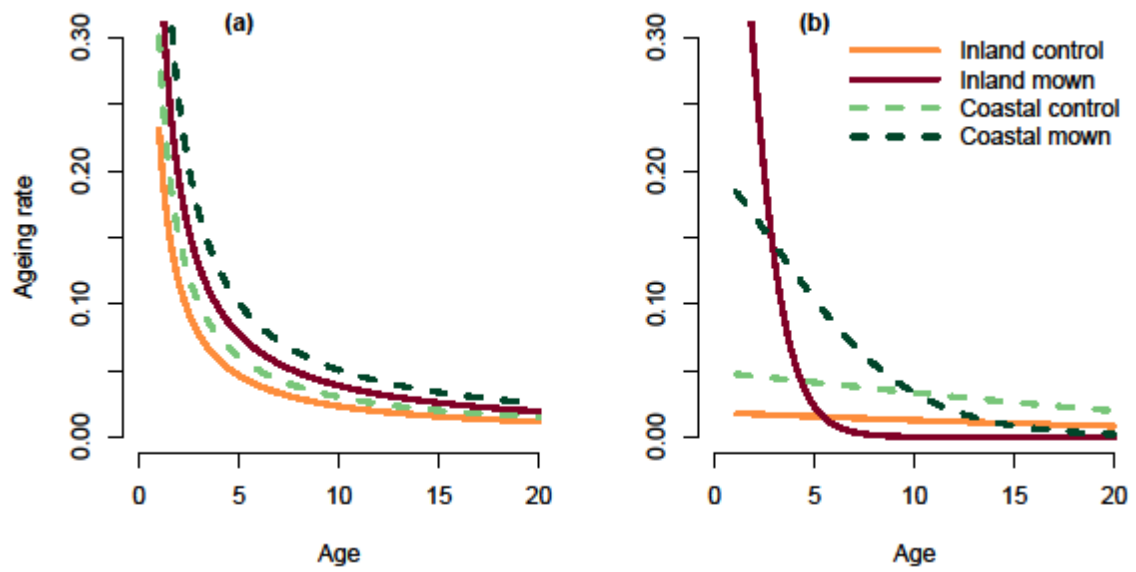


Figure S4. Predictions of senescence rates from the best-fitting Weibull model with reproductive investment accounted for (a; identical to fig. 4 in the manuscript), and predictions from the best-fitting logistic model excluding reproductive investment (b) (see figure S3).