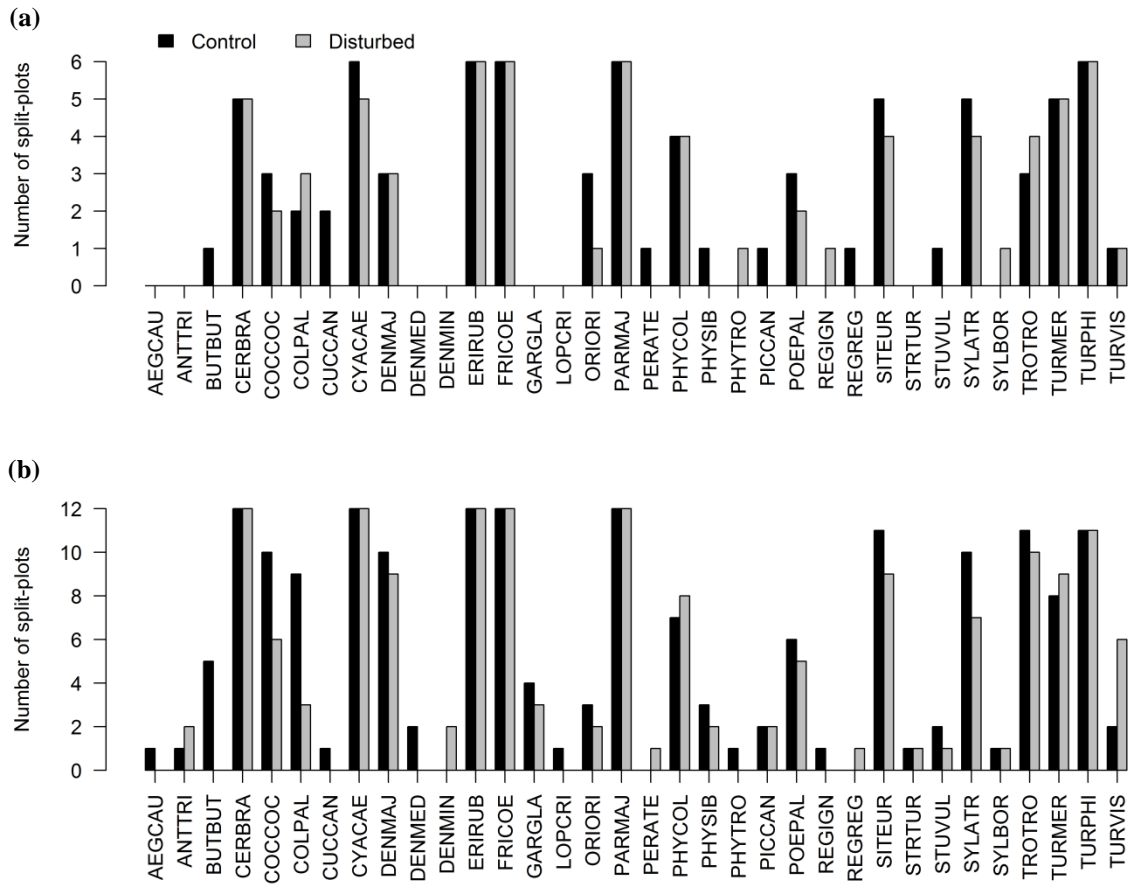


1 **Supporting Information for Bötsch et al.**

2



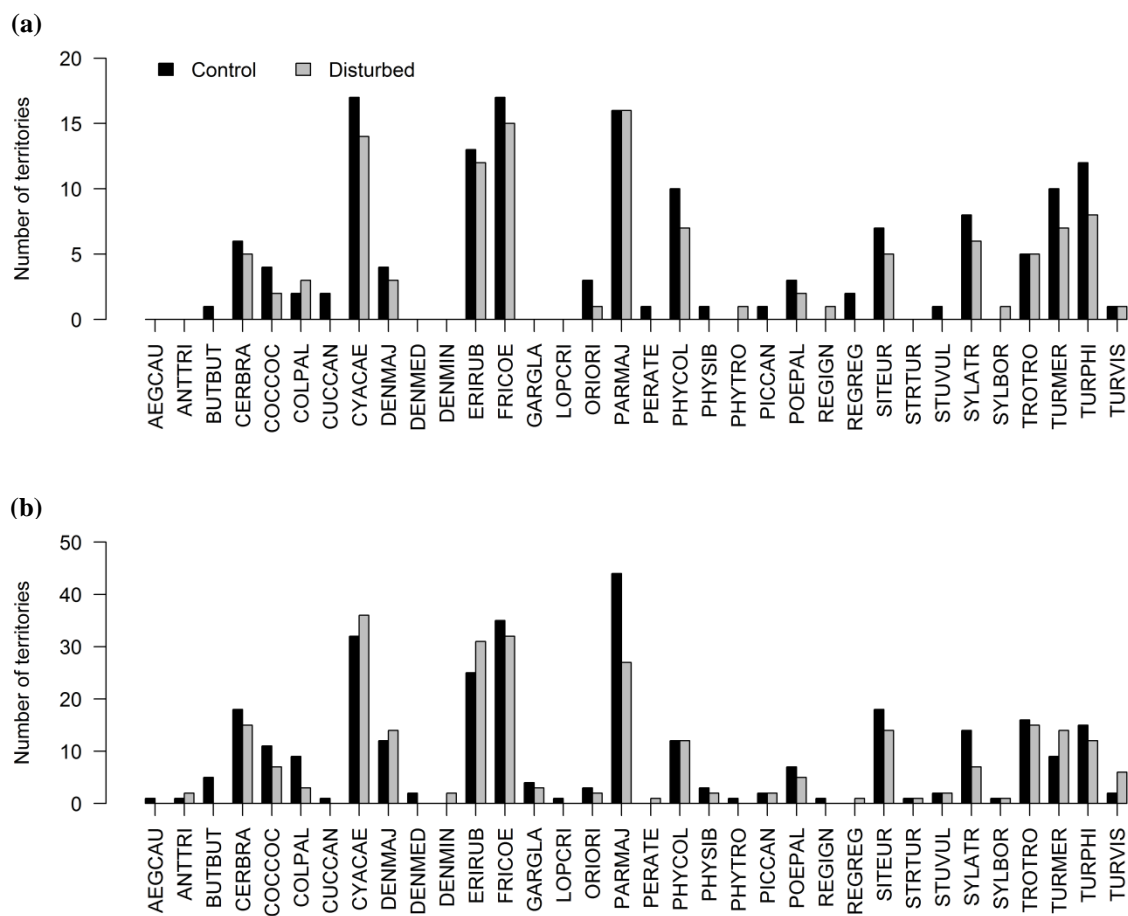
3

4 **Figure S1:** Number of split-plots in which each species was detected at least once during the

5 three breeding-bird censuses, separately for disturbed and control split-plots. In 2014 (a) a

6 species could be seen in a maximum of 6 split-plots while in 2015 (b) the maximum was 12.

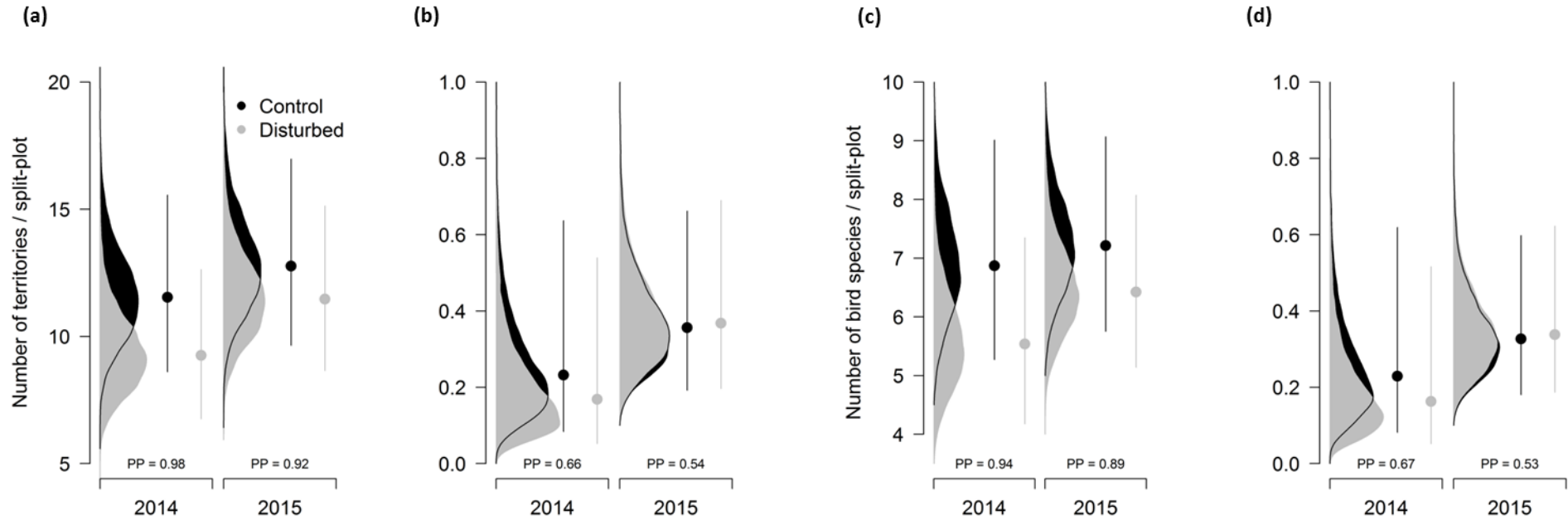
7 For species abbreviations see electronic supplementary material table S1.



8

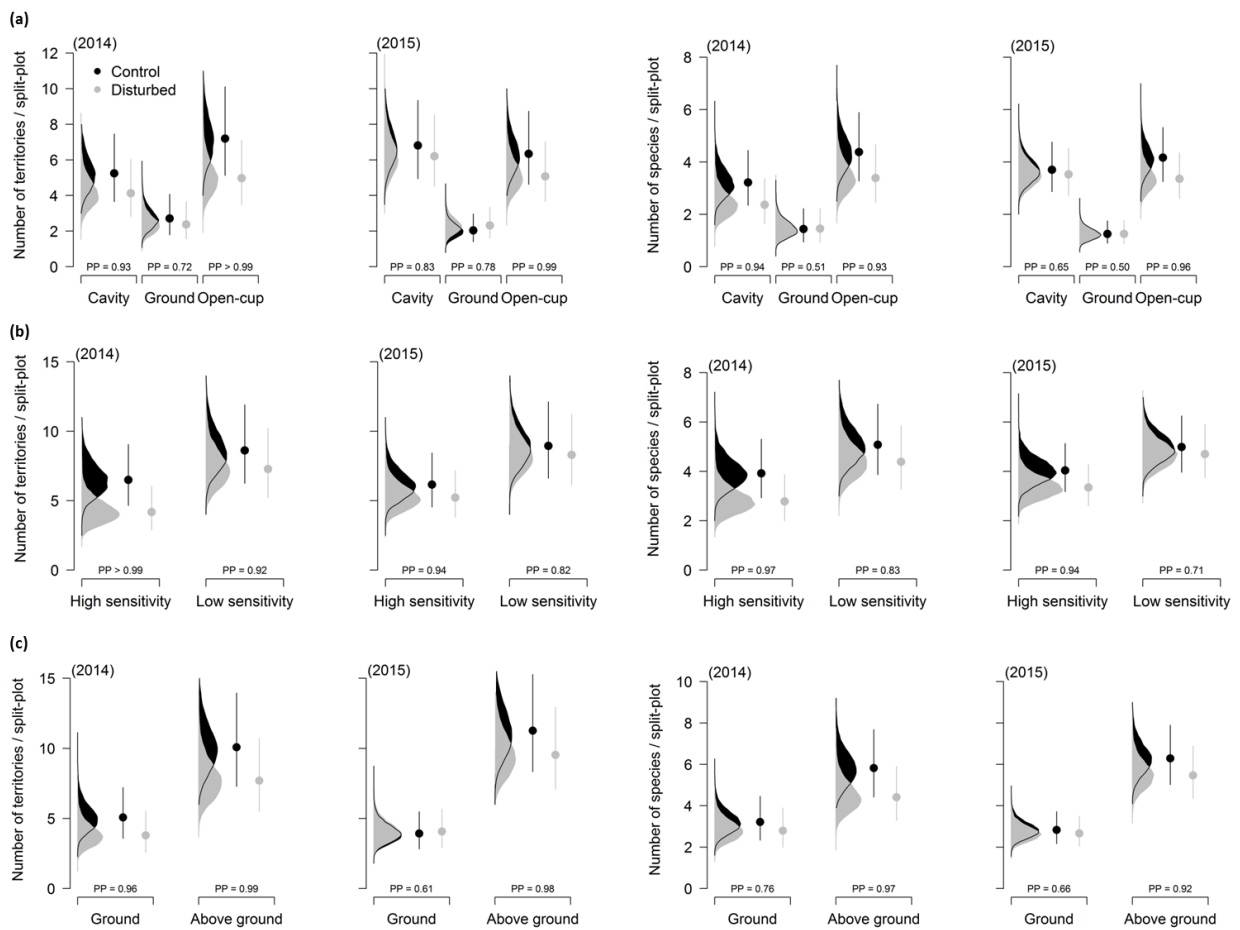
9 **Figure S2:** Number of territories per species for disturbed and control split-plots in the six  
 10 plots of 2014 (a) and in the 12 plots of 2015 (b). For each year, the maximum number of  
 11 territories per species detected in each split-plot out of the three censuses was taken and  
 12 summed over all split-plots. For species abbreviations see electronic supplementary material  
 13 table S1.

14



15

16 **Figure S3:** Effect of experimental human disturbance on the number of territories (a,b) and species richness (c,d) per split-plot (4.7 ha) according to  
 17 *year* and *migration type*: the graphs (a) and (c) include only the resident and short-distance migrant species, while the graphs (b) and (d) only the  
 18 long-distance migrants. Note the different y-axes. Represented are mean fitted values with 95% credible intervals (table 1) as well as the  
 19 corresponding posterior distributions. The posterior probability (PP) shows the strength of the difference between disturbed and control split-plots.



21

22 **Figure S4:** Effect of experimental human disturbance on the number of territories and species  
 23 richness per split-plot (4.7 ha) according to (a) nesting-guild (cavity, ground and open-cup  
 24 nesters), (b) sensitivity (based on flight initiation distance (FID); high = FID > median FID,  
 25 low = FID ≤ median FID), and (c) foraging guild (ground and above ground) in 2014 and  
 26 2015, respectively (only for resident and short distance migrants). Represented are mean fitted  
 27 values with 95% credible intervals (Electronic supplementary material table S2-S4) as well as  
 28 the corresponding posterior distributions and the posterior probability (PP) that the  
 29 differences between disturbed and control split-plots are different from zero.