

## Supplementary material for

# Stable, metastable and unstable cellulose solutions

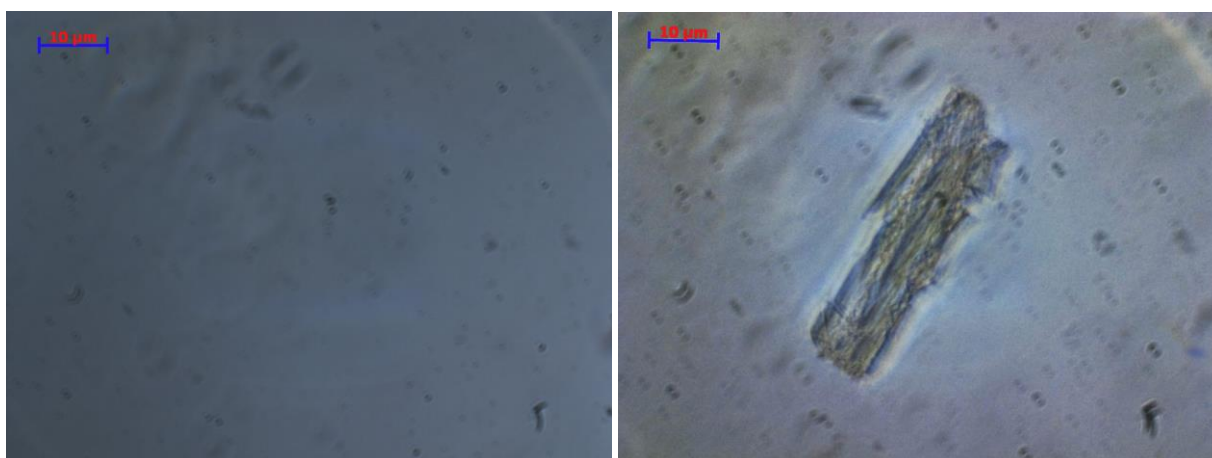
*Marta Gubitosi\**, Pegah Nosrati, Mona Koder Hamid, Stefan Kuczera, Manja A. Behrens,

*Eric G. Johansson, Ulf Olsson*

Physical Chemistry, Lund University, Box 124, SE-221 00 Lund, Sweden

[marta.gubitosi@fkem1.lu.se](mailto:marta.gubitosi@fkem1.lu.se)

*Light microscopy.* Solubility of MCC and regenerated cellulose in 40 wt% TBAH(aq) was investigated by light microscopy. Solutions were prepared accordingly to the previous sections descriptions in the concentration ranges 0.001-0.030 g/cm<sup>3</sup>. Solubility tests were performed using a Zeiss Axioplan microscope. A drop of cellulose solution (ca. 50 µl) was placed on a microscope slide and covered with a 24 x 40 mm cover glass. The images were recorded by a Zeiss Axiocam MRc camera connected to the microscope. Magnifications of 10 x and 100 x were used.



**Figure S1.** Light microscopy image of 0.002 (left panel) and 0.0025 g/cm<sup>3</sup> (right panel) regenerated cellulose (cellulose II) in 40 wt.% TBAH(aq) with a magnification of 100x.