

Low-Information Voting: Evidence from Instant-Runoff Elections

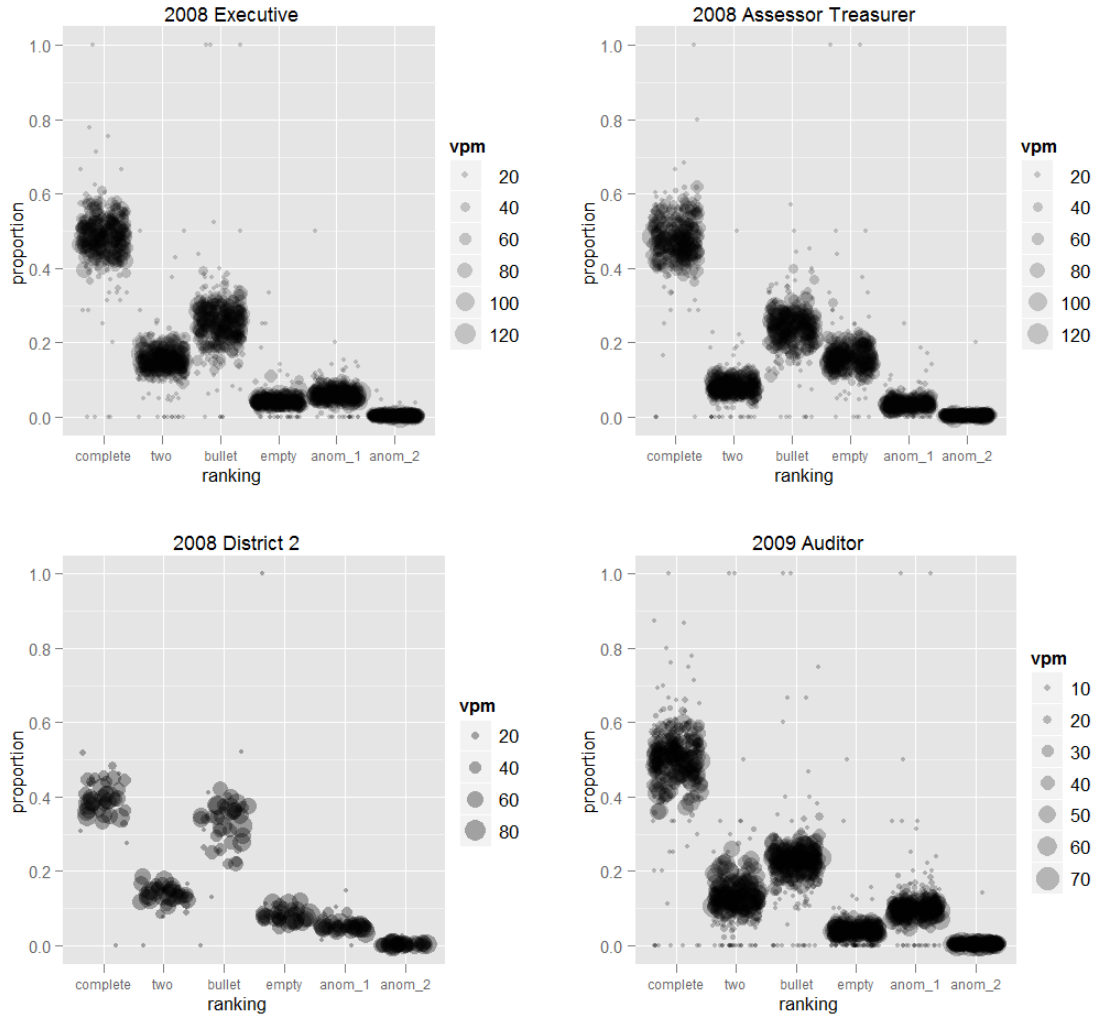
Online Appendix

A1 - Incidence of ranking types across precincts

Figure A1 gives the distribution of ranking types across precincts for the three IRV contests that took place in Pierce County, WA, in November 4, 2008, and one additional IRV contest that took place in November 3, 2009. Points in each plot represent precincts. Larger points correspond to precincts with greater number of voters per machine. For the purpose of making this figure, we grouped rankings into six categories: complete; only first two positions filled; only first position filled (i.e. bullet vote); with repeated candidate names (anomalous of type 1); and with filled position preceded by empty position higher up the ranking (anomalous of type 2).

The proportion of complete rankings varies considerably across precincts, usually within the 40% to 60% range. The incidence of bullet votes and empty rankings also varies markedly across precincts, as does the incidence of anomalous rankings of the first type (where the same candidate is selected for more than one position in the ranking). We did not find that anomalous rankings were concentrated within a small subset of precincts or geographic areas.

Figure A1 Incidence of ranking types across precincts



Note: Plots show the distribution of ranking types across Pierce County precincts for four different IRV contests. Points in each plot represent precincts. Point size is increasing in the number of voters per machine (vpm). Horizontal axes indicate ranking types and vertical axes indicate the proportion of ranking of each type within each precinct.

A2 - Dimensional Analysis: Explained Variation

Figure A2.a: Executive Contest

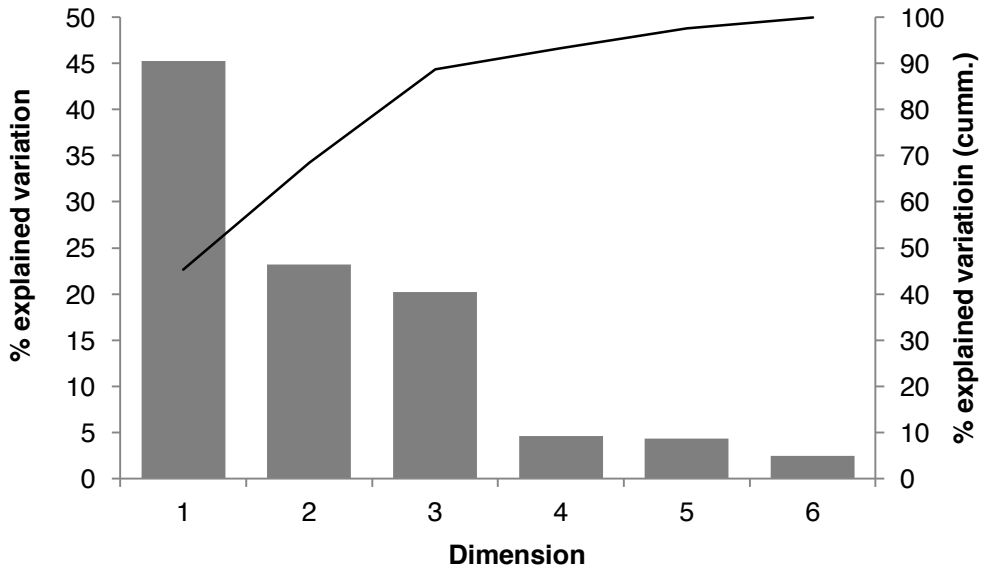


Figure A2.b: District 2 Contest

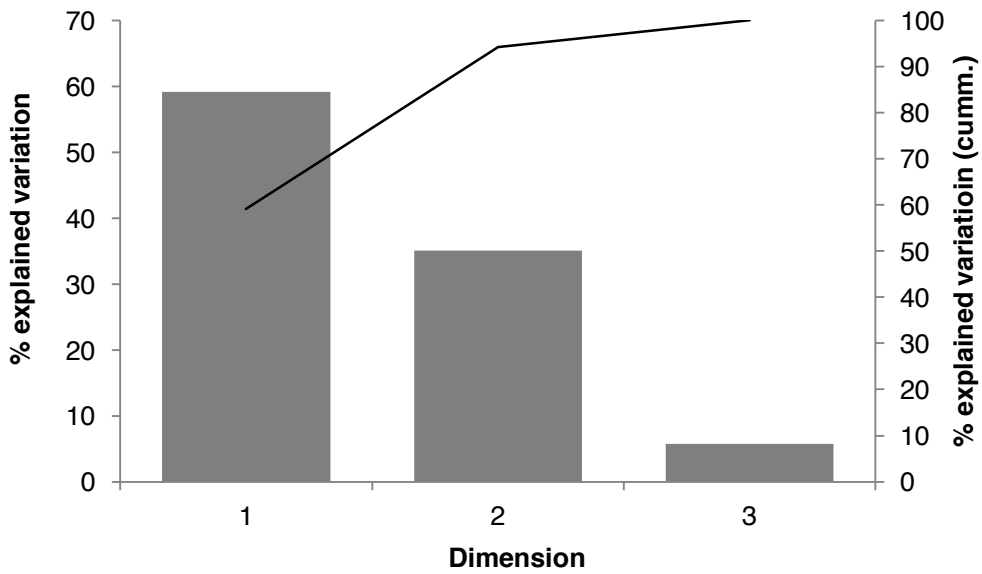


Figure A2.c: All 2008 Contests

