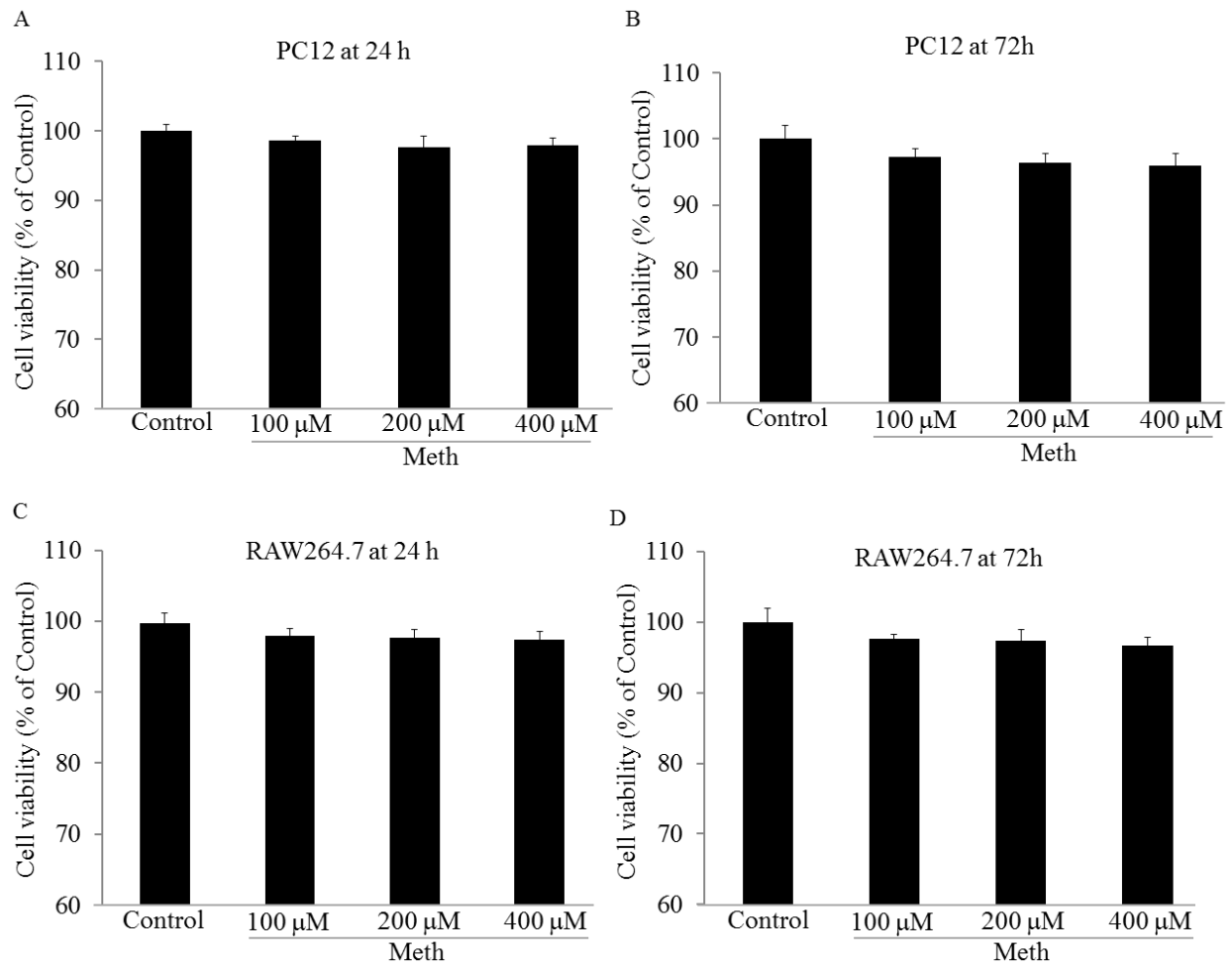
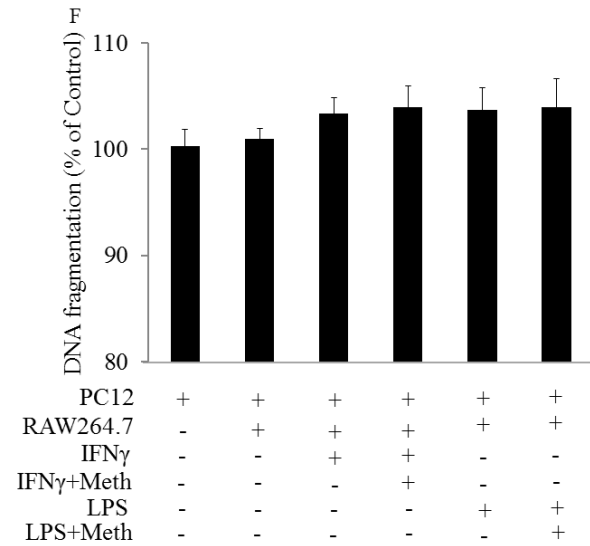
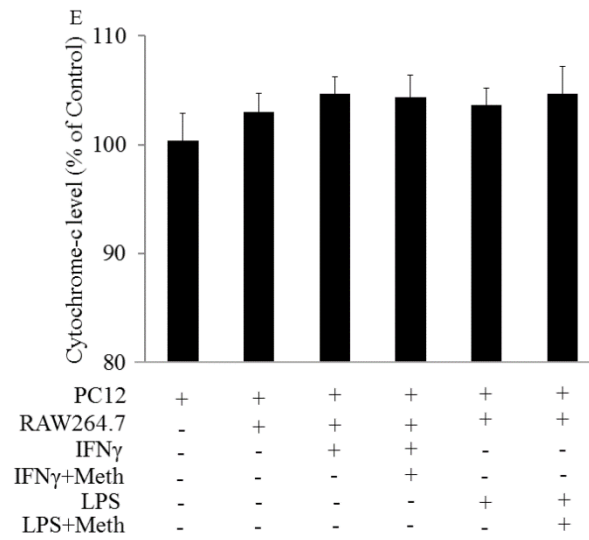
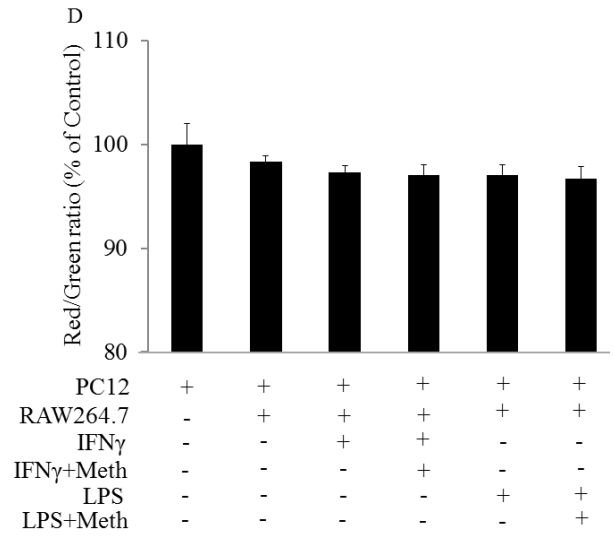
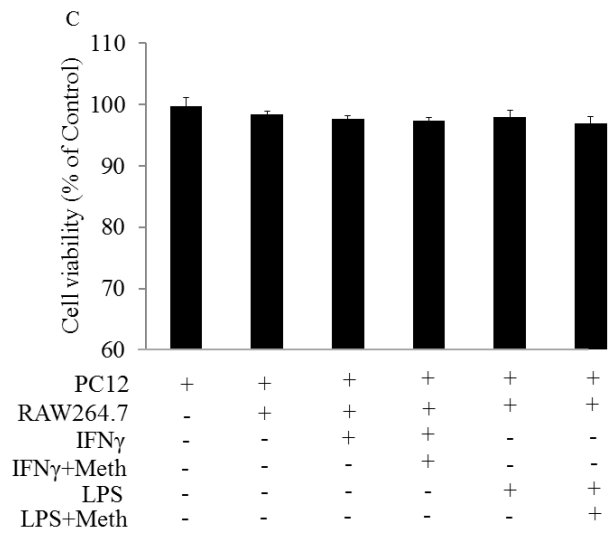
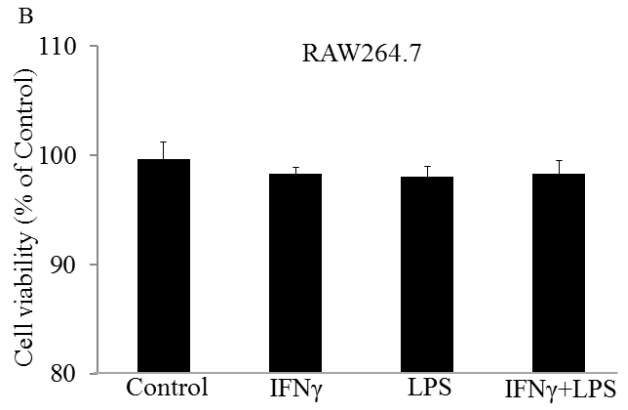
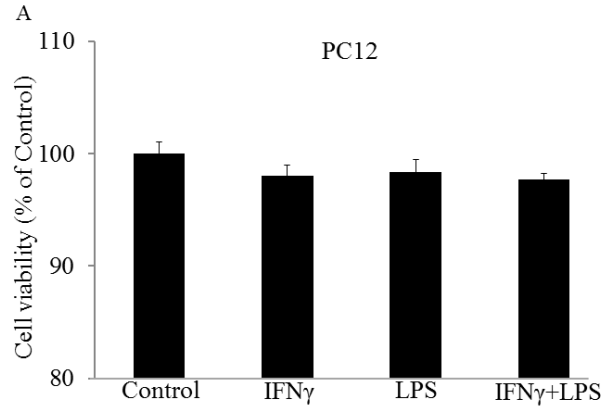


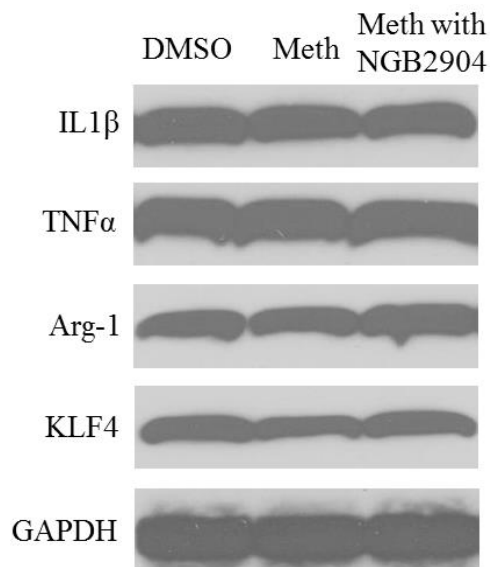
Supplementary figures



Supplementary Fig.1 PC12 or RAW264.7 cells were treated with Meth at the concentration of 100, 200, 400 μM . Cell viability was tested by MTT assay. Meth didn't induce significant cytotoxicity on PC12 cells after 24 h (A) and 72 h (B) treatment, as well as on RAW264.7 cells after 24 h (C) and 72 h (D) treatment. Samples were measured in triplicate and experiments were repeated three times.



Supplementary Fig.2 IFN γ (10 ng/mL) or LPS (100 ng/mL) or IFN γ plus LPS didn't cause toxicity on PC12 (A) and RAW264.7 (B) cells. IFN γ or LPS individually didn't change PC12 cell viability (C), mitochondrial membrane potential (D), cytochrome-c releasing (E) and DNA fragmentation (F). Meth (400 μ M) didn't enhance the effects of IFN γ or LPS. Samples were measured in triplicate and experiments were repeated three times.



Supplementary Fig.3 RAW264.7 cells were treated with Meth at 400 μ M, with or without NGB2904 (5 nM) for 48 h. RAW264.7 cells were collected to determine protein expression. Meth and Meth with NGB2904 did not change protein expression of IL1 β , TNF α , Arg-1 and KLF4. Experiments were repeated three times and a representative blot was displayed.