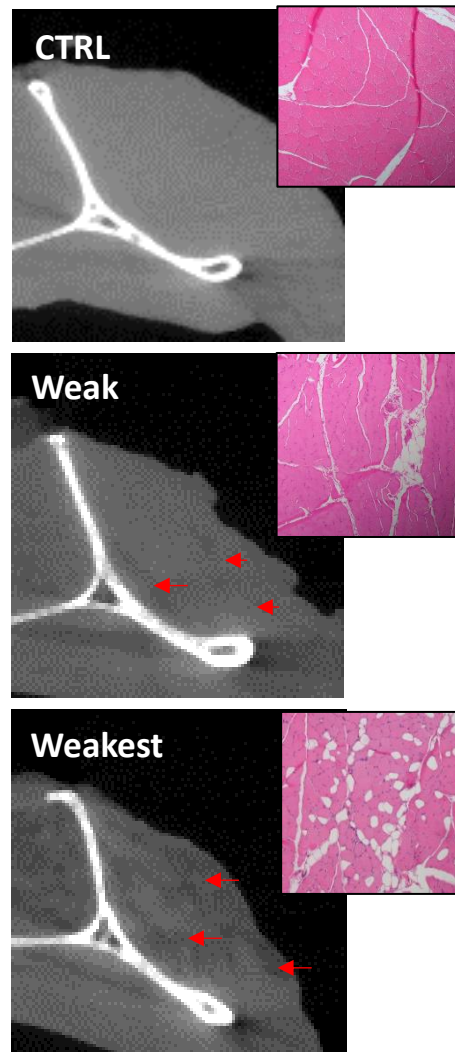


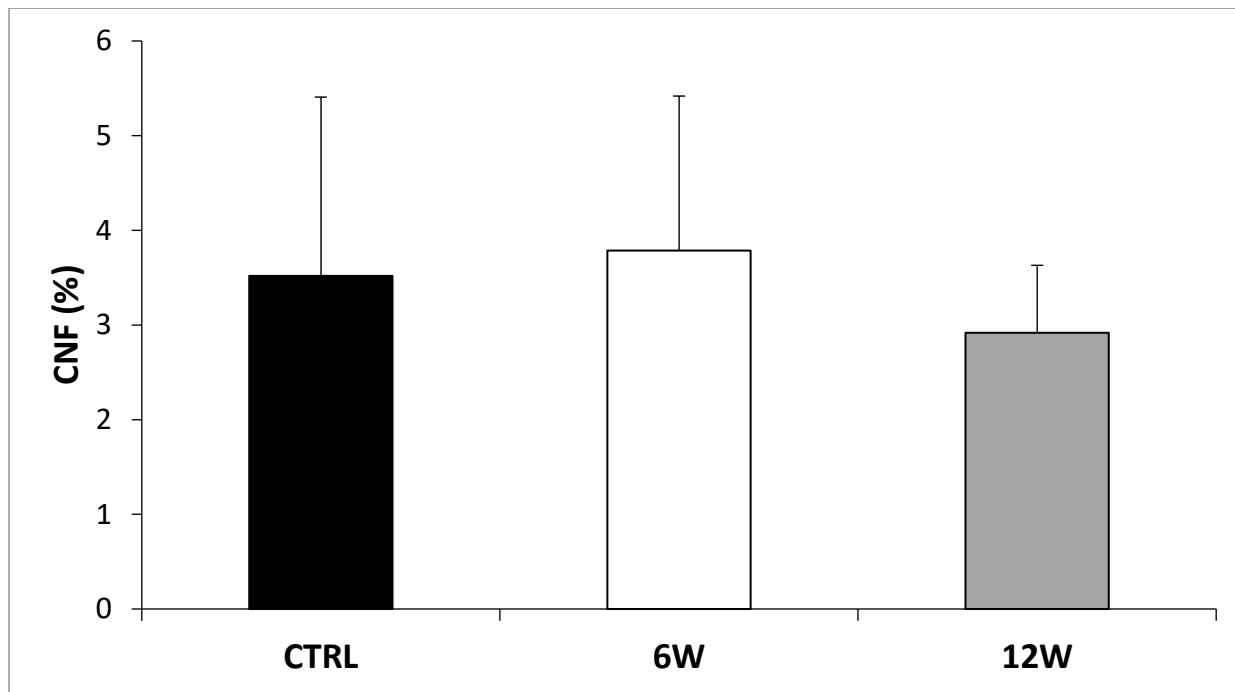
Appendix Figure A1: Imaging histological sections.

Stitched mosaic of entire muscle section stained with H&E at 6W (left) or with picrosirius red at 12W (right) imaged at 20x. Insets represent one field of view at 20x.



Appendix Figure A2: FI measured through CT.

Representative images of CT scans for control and tenotomized muscle with the corresponding H&E image (10x). Arrows point to hypodensities, which are indicative of FI. Scale bar represents 100 μm .



Appendix Figure A3: Centrally nucleated fibers.

The percentage of myofibers (out of ~300 myofibers per sample) with nuclei in the cytoplasm were quantified using H&E stained muscle cross sections. *CNF*, centrally nucleated fibers. All data are presented as mean \pm SD.