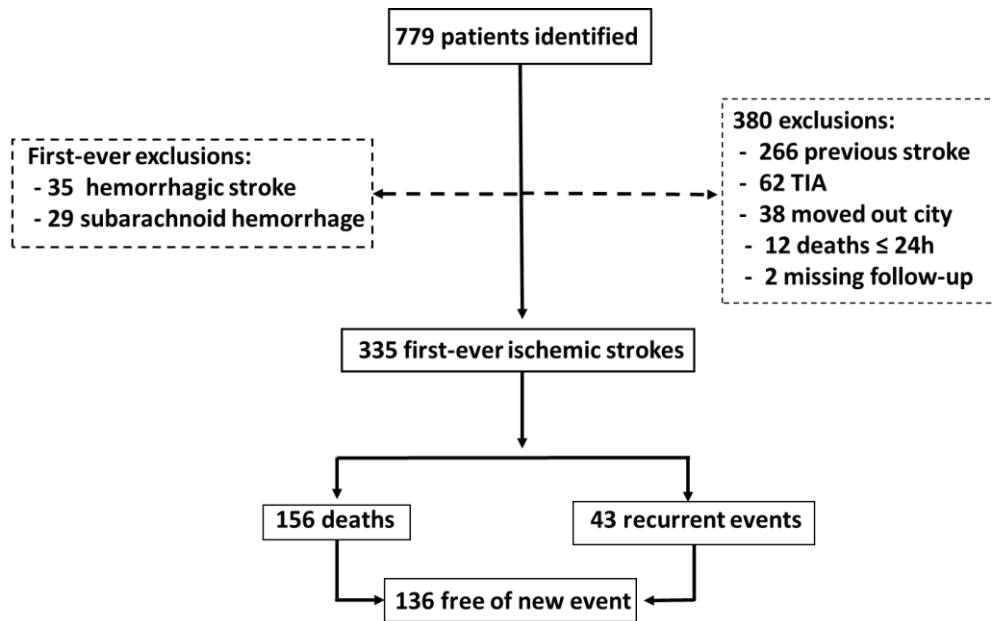


Supplemental data



**Figure S1** Flowchart of stroke recurrence or death over 5 years after first-ever ischemic stroke in 2010, Joinville, Brazil

## Supplemental data

**Table S1.** Kaplan–Meier estimates of probability of survival within defined time intervals after index stroke

	1 to 30 days	1 to 6 months	6 m to 1 year	1 to 2 years	2 to 3 years	3 to 4 years	4 to 5 years
Risk of death, %*	22.1	7.4	5.2	7.0	5.5	9.2	4.6
CI 95 %	18.1–26.5	4.8–10.9	2.9–8.5	4.2–10.7	3.1–9.1	5.8–13.6	2.2–8.3
Cumulative risk, %	22.1	27.8	31.6	36.4	39.9	45.4	47.9
CI 95%	18.1–26.5	23.5–32.5	27.0–36.4	31.6–41.3	35.0–44.8	40.4–50.4	44.9–54.9
N at risk	399	311	288	273	254	240	218
N of deaths	88	23	15	19	14	22	10
Cumulative deaths	88	111	126	145	159	181	191

\* Risk of death = (1-Kaplan–Meier estimate).

**Table S2.** Regression model incorporating long-term survivals with Weibull method for major stroke survival analysis

Parameter	Estimation	Standard error	95% IC		P-value
Intercepto	3.587	0.300	3.000	4.175	<.0001
PIH	-1.850	0.713	-3.248	-0.453	0.010
SAH	-1.875	0.767	-3.379	-0.372	0.015
Scale	2.872	0.204	2.499	3.302	
Weibull shape	0.348	0.025	0.303	0.400	

Reference: ischemic stroke

**Table S3.** Kaplan–Meier estimates of risk of recurrence of a first recurrent stroke within defined time intervals after first-ever stroke

	< 30 d	1 to 6 m	6 m - 12 m	1 to 2 y	2 to 3y	3 to 4y	4 to 5y
--	--------	----------	------------	----------	---------	---------	---------

Risk, %*	0.75	2.0	3.7	1.9	2.5	0.5	1.1
CI 95 %	0.16–2.2	0.9–4.0	2.0–6.2	0.8–3.9	1.2–4.7	0.07–2.0	0.3–2.9
Cumulative risk, %	0.75	2.8	6.3	8.0	10.3	10.8	11.8
CI 95%	0.16–2.2	1.4–4.9	4.1–9.9	5.5–11.1	7.5–13.7	7.9–14.2	8.8–14.4
At risk	399	391	377	370	361	359	355
First recurrent strokes, n	3	8	14	7	9	2	4
Cumulative first recurrent strokes, n	3	11	25	32	41	43	47

\* Risk of death = (1-Kaplan–Meier estimate).

**Table S4.** Death, disability (mRS >2), and stroke recurrence of IS who were thrombolysed or not

	Death (%)	Survival (%)	Disabled (as % of survivors)	Death or disability (%)	Recurrence (n/cumulative risk %)
<b>No IV thrombolysis (n=137)</b>					
1 mo	41 (30)	96 (70)	41 (43)	82 (60)	1 (0.7)
6 mo	54 (39)	83 (61)	28 (34)	82 (60)	6 (4)
1 y	60 (44)	77 (56)	27 (35)	87 (64)	8 (6)
2 y	70 (51)	67 (49)	22 (33)	92 (67)	10 (7)
3 y	75 (56)	62 (45)	21(34)	96 (70)	12 (9)
4 y	81 (59)	56 (41)	18 (32)	99 (72)	12 (9)
5 y	87 (64)	50 (36)	17 (34)	104 (76)	13 (9)
<b>IV thrombolysis (n=28)</b>					
1 mo	6 (21)	21 (75)	9 (43)	16 (57)	1 (4)
6 mo	6 (21)	22 (79)	9 (41)	15 (54)	2 (7)
1 y	6 (21)	22 (79)	9 (41)	15 (54)	2 (7)
2 y	9 (32)	19 (68)	6 (32)	15 (54)	2 (7)
3 y	11(44)	17 (61)	4 (24)	15 (54)	3 (11)
4 y	14 (50)	14 (50)	3 (21)	17 (61)	3 (11)
5 y	15 (54)	13 (46)	3 (23)	18 (64)	3 (11)

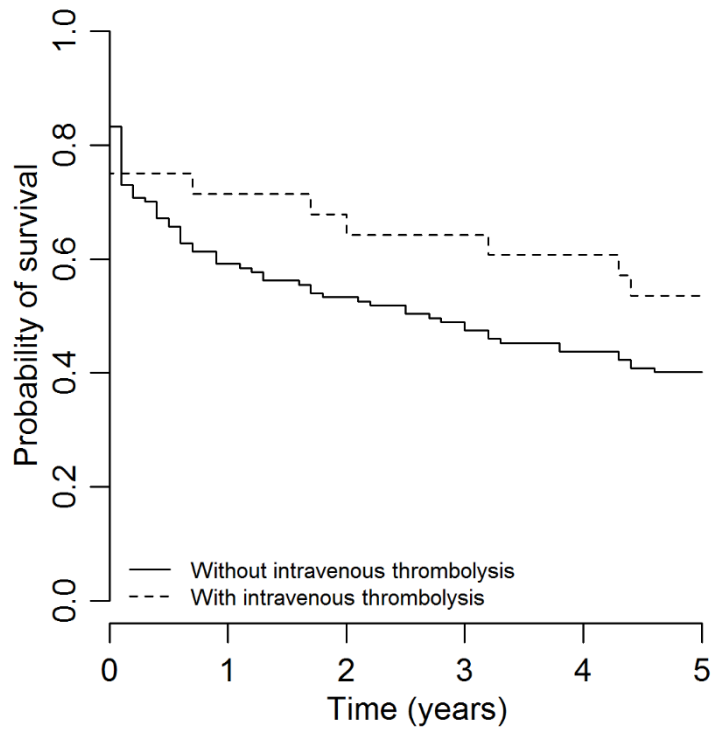


Figure S2 Kaplan-Meier curve parametric models assuming Weibull distribution showing the 5-year probability of survival after a first-ever stroke among IS with and without intravenous thrombolysis (tPA)