

Supplementary Material

The following section is online supplementary material and is not designed to be published in the paper. Rather this material will be held on a website and linked to in the paper. We provide the information here for ease of access only.

Table S1a:

Total Sample Correlations

Pearson Correlation	Polychoric Correlation			
	Country	Future	General	People
Country	1	0.195	0.229	0.179
Future	0.135	1	0.639	0.501
General	0.157	0.473	1	0.632
People	0.117	0.361	0.465	1

Table S1b:

Indigenous Sample Correlations

Pearson Correlation	Polychoric Correlation			
	Country	Future	General	People
Country	1	0.25	0.25	0.20
Future	0.18	1	0.61	0.49
General	0.18	0.47	1	0.61
People	0.13	0.36	0.45	1

Table S1c:

Non-Indigenous Sample Correlations

Pearson Correlation	Polychoric Correlation			
	Country	Future	General	People
Country	1	0.19	0.23	0.18
Future	0.13	1	0.64	0.50
General	0.16	0.47	1	0.63
People	0.12	0.36	0.47	1

Table S2
Parameter Estimates from Selected Models - Year-Fixed Effects

Model	Happiness with:			
	General	Future	People	Government
Random Effects (S.D. units)				
Individual	.583***	.527***	.545***	.581***
School	.087***	.091***	.083***	.105***
Fixed Effects				
Age	.000	.047***	.017***	.025***
Age ²	-.002***	-.004***	-.003***	.001*
Cohort Size	.014	.013	.020	-.039
Indigenous	-.082***	-.071**	-.057**	-.018
Indigenous x Age	.018***			.023*
Year-fixed effect	.078***	.059***	.092***	.138***
SD				
Indig x Year-fixed effect SD				.113***

Notes. * $p < .05$; ** $p < .01$; *** $p < .001$. Age is on a year metric. Cohort size is in 100,000 people units. Indigenous is dichotomous. Random effects are given in standard deviation units. All other effects are given in standard deviation units of wellbeing. The significance of SD of year-fixed effects estimated via the delta method.

Table S3
Parameter Estimates from Selected Models - Log Odds

Model	Happiness with:			
	General	Future	People	Government
Random Effects (S.D. units)				
Individual	1.530** *	1.265***	1.363***	1.591***
School	.251***	.233***	.229***	.309***
Year	.207***	.116***	.199***	.356***
Indigenous Year				.013***
Fixed Effects				
Age	-.003	.126***	.039***	-.073***
Age ²	-.007***	-.013***	-.009***	.023**
Cohort Size	.042	.060	.131*	-.045
Indigenous	-.260***	-.135*	-.170*	-.259*
Indigenous x Age	.042*			.516**

Notes. * $p < .05$; ** $p < .01$; *** $p < .001$. Age is on a year metric. Cohort size is in 100,000 people units. Random effects are given in standard deviation units. All other effects are given in standard deviation units of wellbeing.^a Significant in the regression model but only significant at $p < .10$ in the logistic regression model.

Table S4
Sample Size and Attrition Rates by Group, Year, and Cohort

cohort	year	Sample Size		Attrition Rate	
		non-Indigenous	Indigenous	non-Indigenous	Indigenous
1981	1997	9477	228	SP	SP
1981	1998	8962	204	0.05	0.11
1981	1999	8095	172	0.15	0.25
1981	2000	7282	147	0.23	0.36
1981	2001	6380	121	0.33	0.47
1981	2002	5673	100	0.4	0.56
1981	2003	4983	87	0.47	0.62
1981	2004	4339	72	0.54	0.68
1981	2005	3942	63	0.58	0.72
1981	2006	3641	61	0.62	0.73
1984	2000	8954	212	SP	SP
1984	2001	8252	188	0.08	0.11
1984	2002	7315	160	0.18	0.25
1984	2003	6532	125	0.27	0.41
1984	2004	5678	94	0.37	0.56
1984	2005	5091	83	0.43	0.61
1984	2006	4507	70	0.5	0.67
1984	2007	4016	62	0.55	0.71
1984	2008	3685	57	0.59	0.73
1984	2009	3438	50	0.62	0.76
1987	2003	9781	589	SP	SP
1987	2004	8887	491	0.09	0.17
1987	2005	8259	432	0.16	0.27
1987	2006	7385	336	0.24	0.43
1987	2007	6398	260	0.35	0.56
1987	2008	5851	223	0.4	0.62
1987	2009	5274	201	0.46	0.66
1987	2010	4731	172	0.52	0.71
1987	2011	4278	151	0.56	0.74
1987	2012	3825	120	0.61	0.8
1987	2013	3626	115	0.63	0.8
1990	2007	8835	518	SP	SP
1990	2008	7943	437	0.1	0.16
1990	2009	6950	349	0.21	0.33
1990	2010	6038	278	0.32	0.46
1990	2011	5199	221	0.41	0.57
1990	2012	4496	174	0.49	0.66
1990	2013	4078	145	0.54	0.7

Notes. SP = Starting point from which attrition rates are calculated.

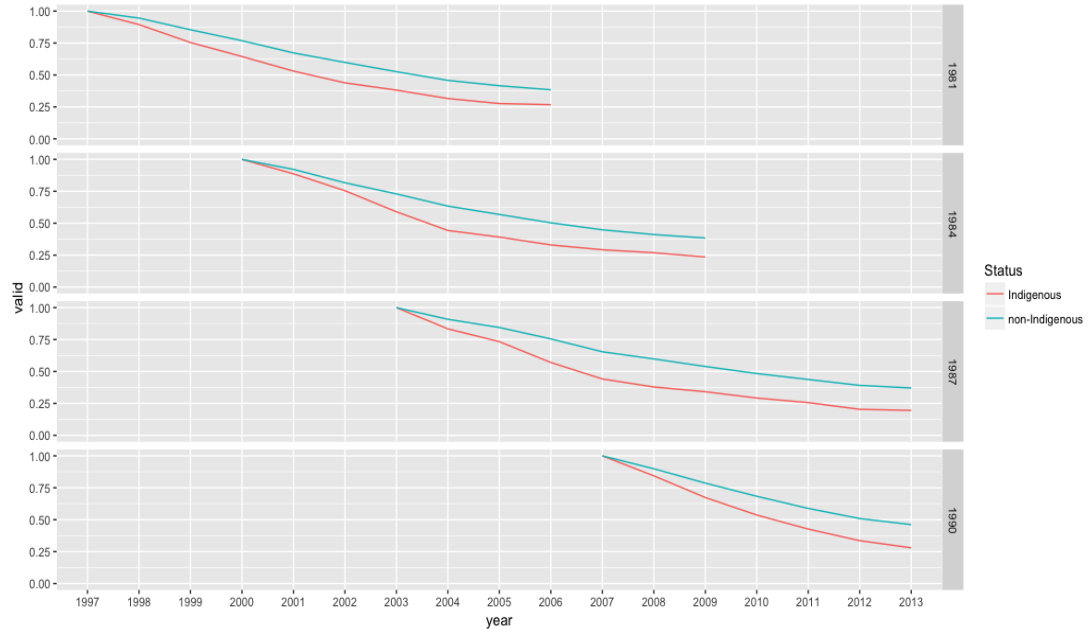


Figure S1. Attrition rates by group.