



Table 5. Immunoexpression of the EMT transcription factors, stratified according to the clinical stage of ovarian tumors ("other" corresponds to stage IB and higher clinical stages of ovarian tumors).

	Group	Arithmetic mean	Standard deviation	Minimum	Lower quartile	Median	Upper quartile	Maximum	Mann-Whitney U-test
TWIST 1	IA	0.86	2.75	0.00	0.00	0.00	0.00	12.00	Z=0.6918 p=0.4890
	other	1.15	2.64	0.00	0.00	0.00	0.00	9.00	
TWIST 2	IA	7.45	1.40	4.00	8.00	8.00	8.00	8.00	Z=0.8818 p=0.3779
	other	6.69	2.63	0.00	8.00	8.00	8.00	8.00	
SNAIL	IA	6.24	2.50	0.00	4.00	8.00	8.00	9.00	Z=0.2281 p=0.8195
	other	6.77	2.62	3.00	4.00	8.00	8.00	12.00	
SLUG	IA	10.66	2.18	4.00	8.00	12.00	12.00	12.00	Z=0.3782 p=0.7052
	other	10.92	2.10	6.00	12.00	12.00	12.00	12.00	
ZEB 1	IA	1.90	2.74	0.00	0.00	0.00	3.00	9.00	Z=0.7166 p=0.4736
	other	1.92	1.75	0.00	0.00	2.00	4.00	4.00	
ZEB 2	IA	0.00	0.00	0.00	0.00	0.00	0.00	0.00	-
	other	0.00	0.00	0.00	0.00	0.00	0.00	0.00	

Table 6. Immunoexpression of the EMT transcription factors, stratified according to the histological grade of ovarian tumors.

	Group	Arithmetic mean	Standard deviation	Minimum	Lower quartile	Median	Upper quartile	Maximum	Mann-Whitney U-test
TWIST 1	G1	2.63	4.93	0.00	0.00	0.00	2.25	12.00	Z=0.5749 p=0.5653
	G2	0.73	1.95	0.00	0.00	0.00	0.00	9.00	
TWIST 2	G1	7.38	1.77	3.00	8.00	8.00	8.00	8.00	Z=0.4898 p=0.6243
	G2	6.92	2.13	0.00	8.00	8.00	8.00	8.00	
SNAIL	G1	5.38	3.34	0.00	3.50	6.00	8.00	9.00	Z=0.4242 p=0.6714
	G2	6.27	2.15	2.00	4.00	8.00	8.00	8.00	
SLUG	G1	11.50	1.41	8.00	12.00	12.00	12.00	12.00	Z=1.1672 p=0.2431
	G2	10.42	2.37	4.00	8.00	12.00	12.00	12.00	
ZEB 1	G1	1.38	1.92	0.00	0.00	0.00	3.25	4.00	Z=0.4586 p=0.6465
	G2	1.96	2.46	0.00	0.00	2.00	3.00	9.00	
ZEB 2	G1	0.00	0.00	0.00	0.00	0.00	0.00	0.00	-
	G2	0.00	0.00	0.00	0.00	0.00	0.00	0.00	

Table 7. Relationship between the immunoexpression of TWIST 1 and survival

	Log-rank test	Wilcoxon-Breslow-Gehan test	Taron-Ware test
Chi <sup>2</sup>	0.4165	0.8223	0.6481
Df	1	1	1
P	0.5187	0.3645	0.4208

No statistically significant differences ( $p > 0.05$ ).

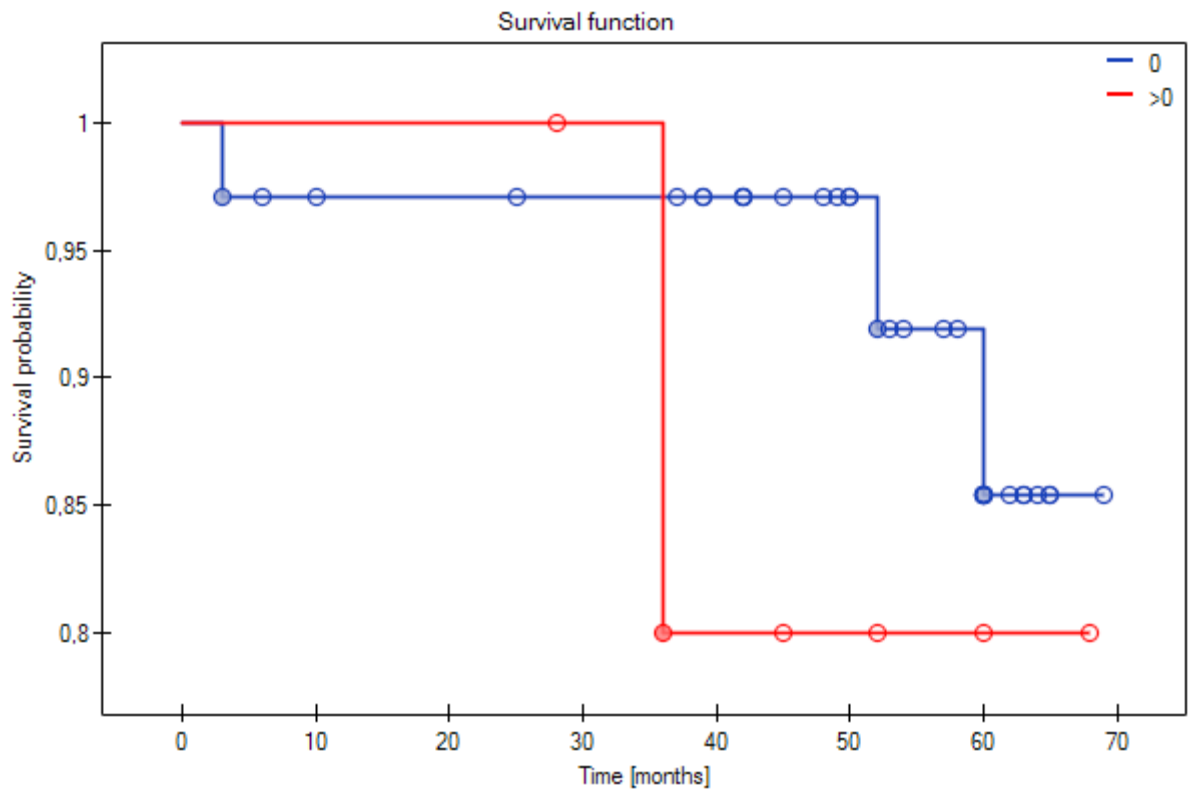


Figure 9. Relationship between the immunorexpression of TWIST 1 and survival

Table 8. Relationship between the immunorexpression of TWIST 2 and survival

	Log-rank test	Wilcoxon-Breslow-Gehan test	Taron-Ware test
Chi <sup>2</sup>	0.8073	0.7206	0.7813
Df	1	1	1
P	0.3689	0.3960	0.3768

No statistically significant differences ( $p > 0.05$ ).

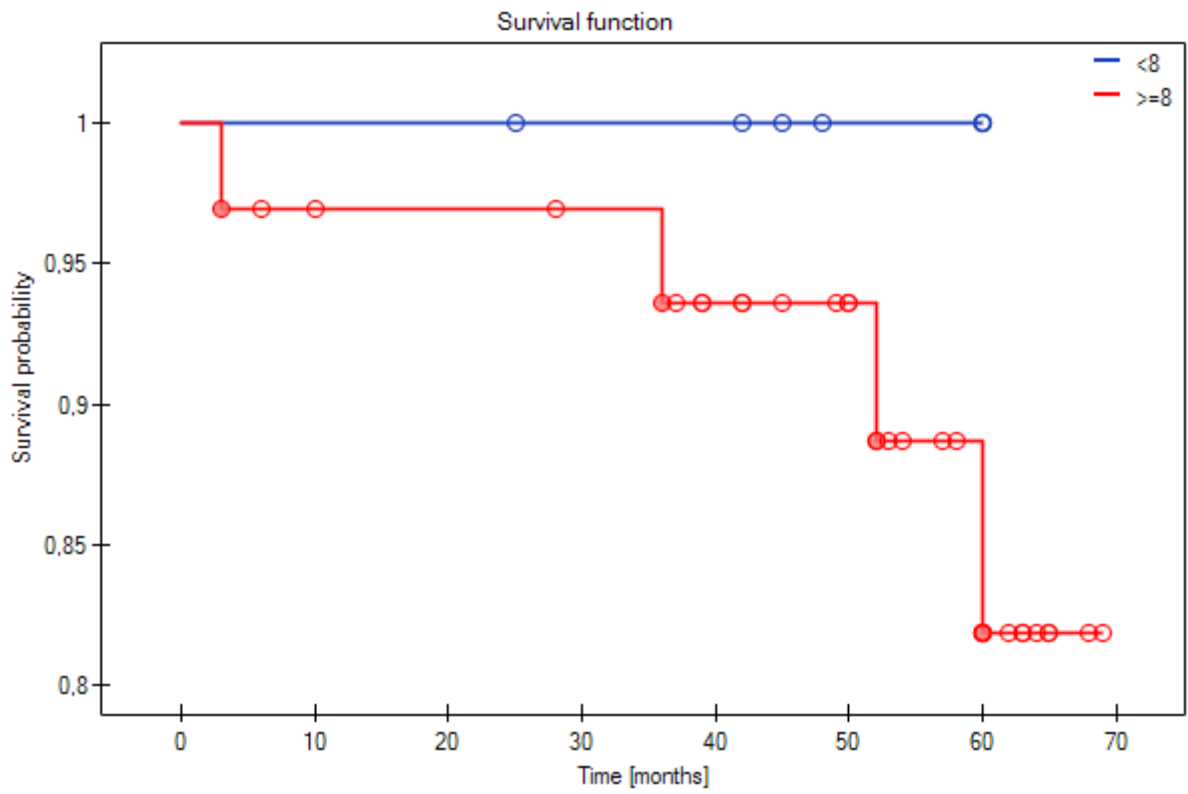


Figure 10. Relationship between the immunopositivity of TWIST 2 and survival

Table 9. Relationship between the immunopositivity of SNAIL and survival.

	Log-rank test	Wilcoxon-Breslow-Gehan test	Taron-Ware test
Chi <sup>2</sup>	0.4320	1.0490	0.7646
Df	1	1	1
P	0.5110	0.3057	0.3819

No statistically significant differences ( $p > 0.05$ ).

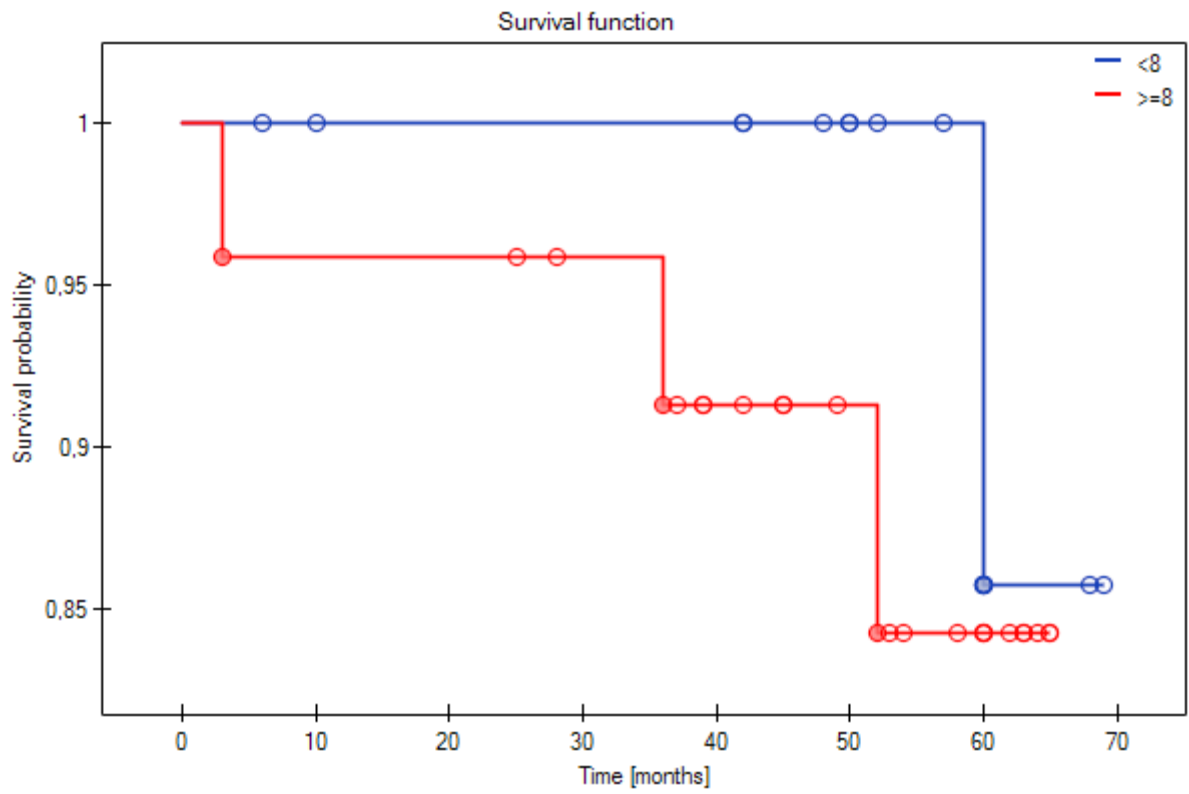


Figure 11. Relationship between the immunoexpression of SNAIL and survival.

Table 10. Relationship between the immunoexpression of SLUG and survival.

	Log-rank test	Wilcoxon-Breslow-Gehan test	Taron-Ware test
Chi <sup>2</sup>	1.5619	0.3048	0.7959
Df	1	1	1
P	0.2114	0.5809	0.3723

No statistically significant differences ( $p > 0.05$ ).

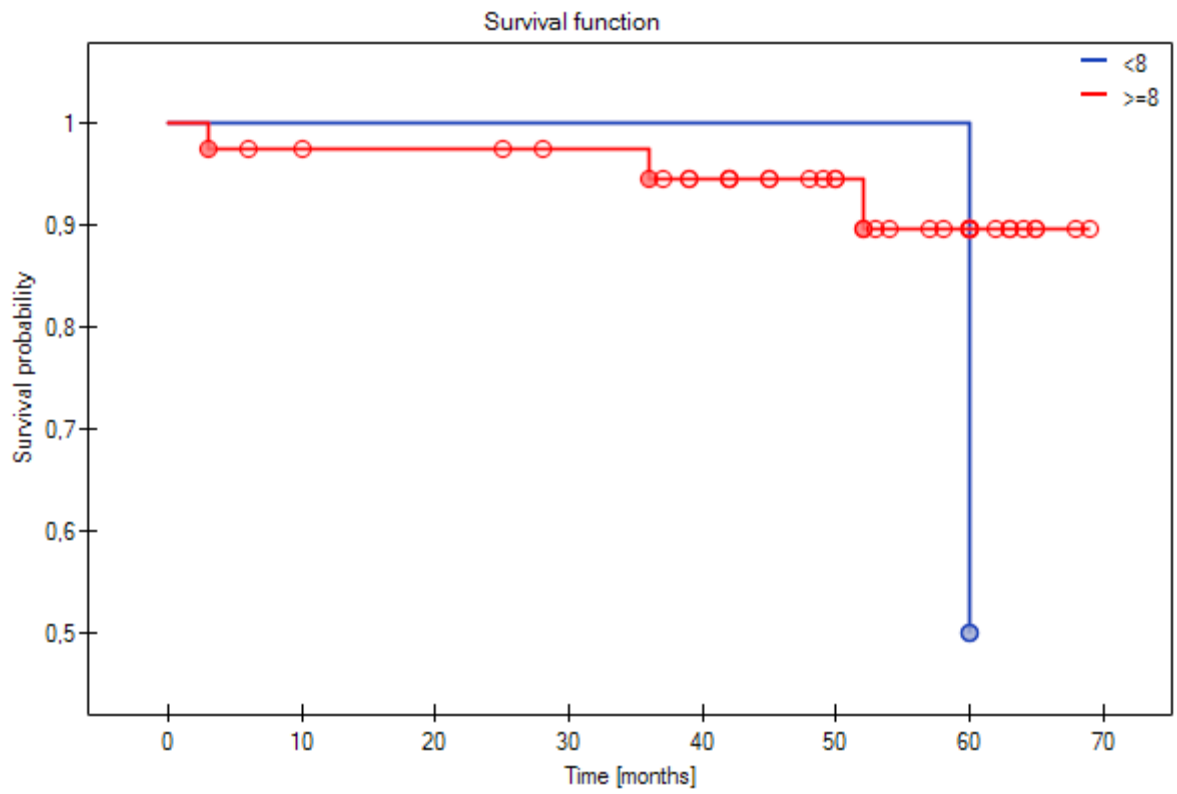


Figure 12. Relationship between the immunopositivity of SLUG and survival.

Table 11. Relationship between the immunopositivity of ZEB 1 and survival.

	Log-rank test	Wilcoxon-Breslow-Gehan test	Taron-Ware test
Chi <sup>2</sup>	0.8861	1.7090	1.3491
df	1	1	1
p	0.3465	0.1911	0.2454

No statistically significant differences ( $p > 0.05$ ).

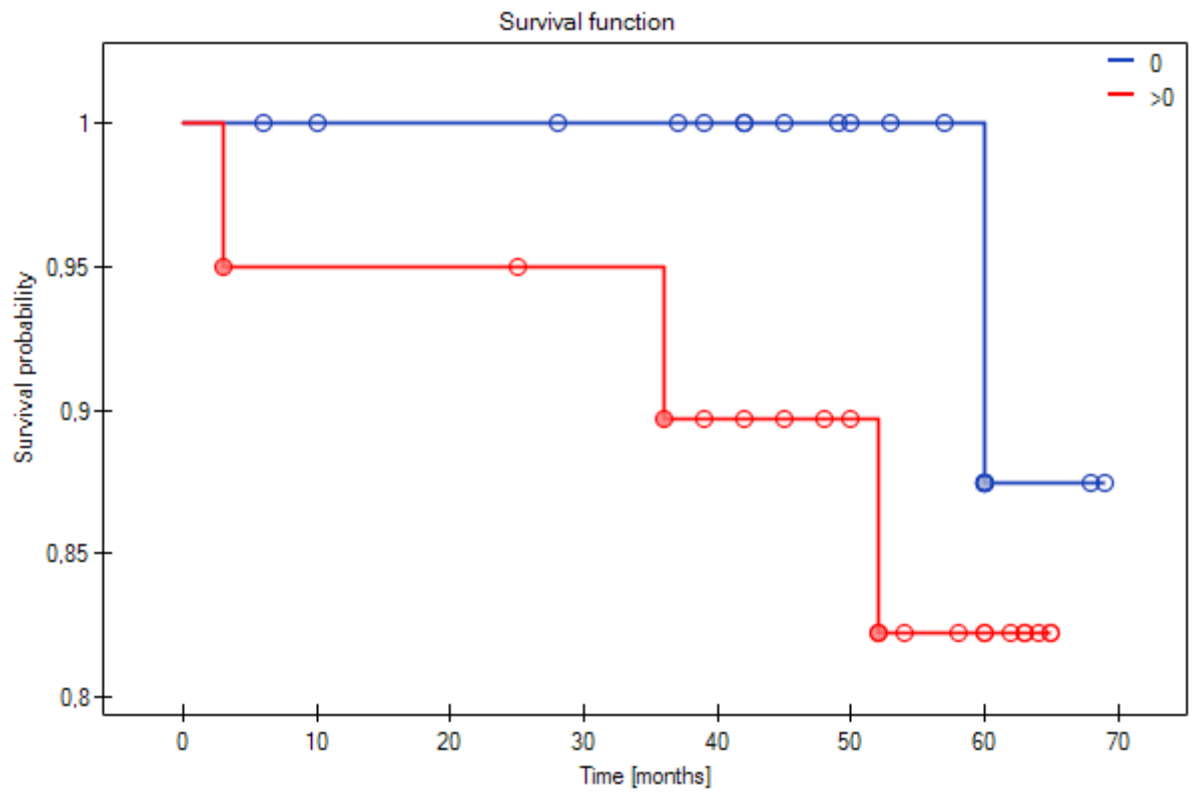


Figure 13. Relationship between the immunoexpression of ZEB 1 and survival.