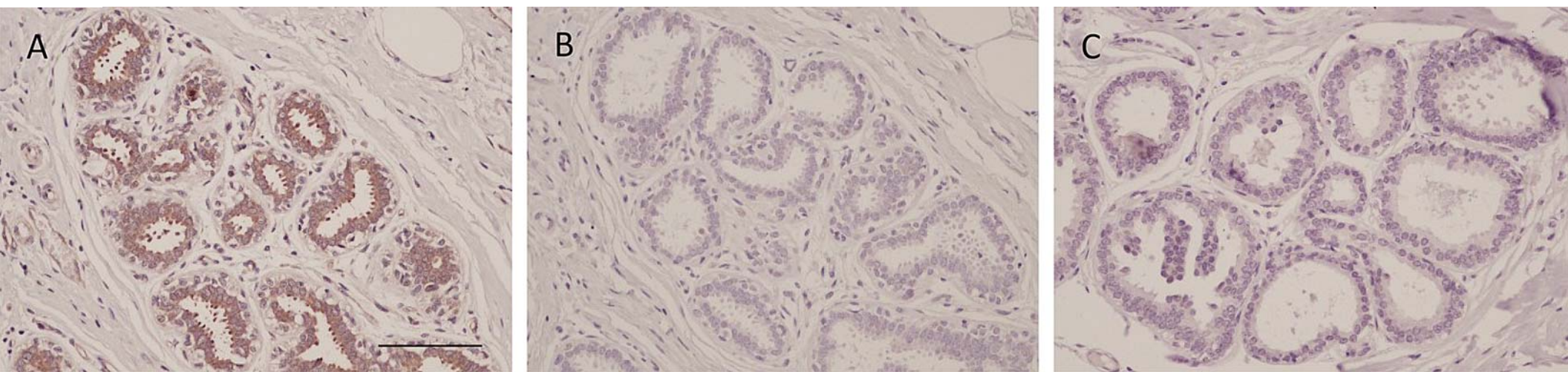


### **Supplementary figure legends**

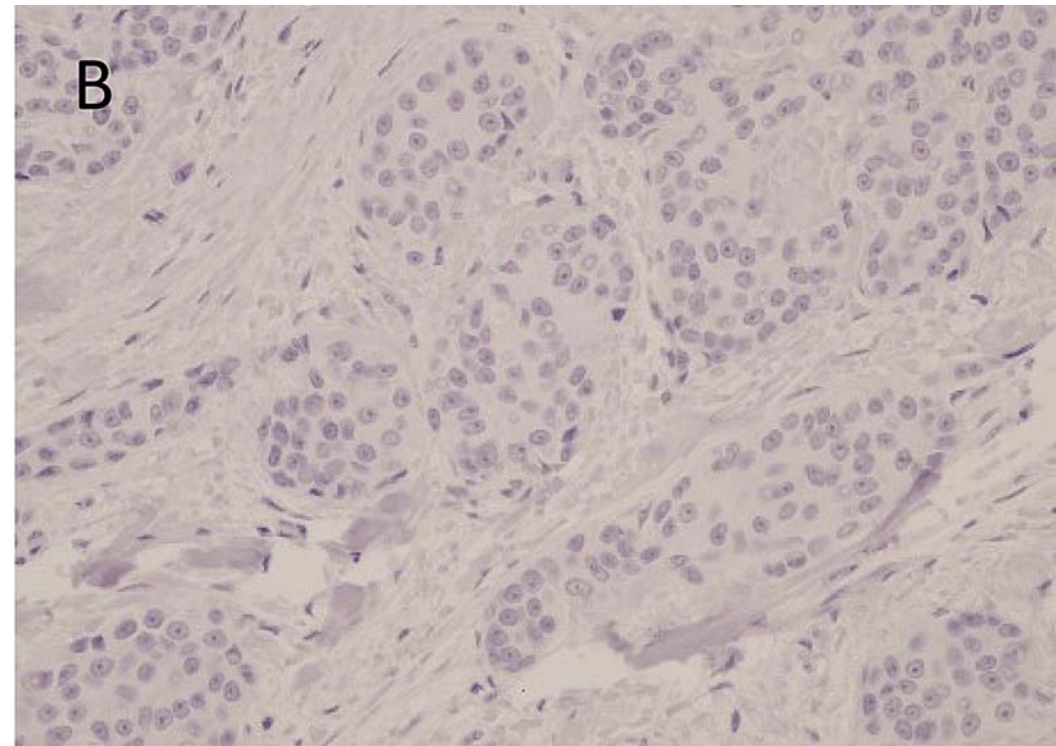
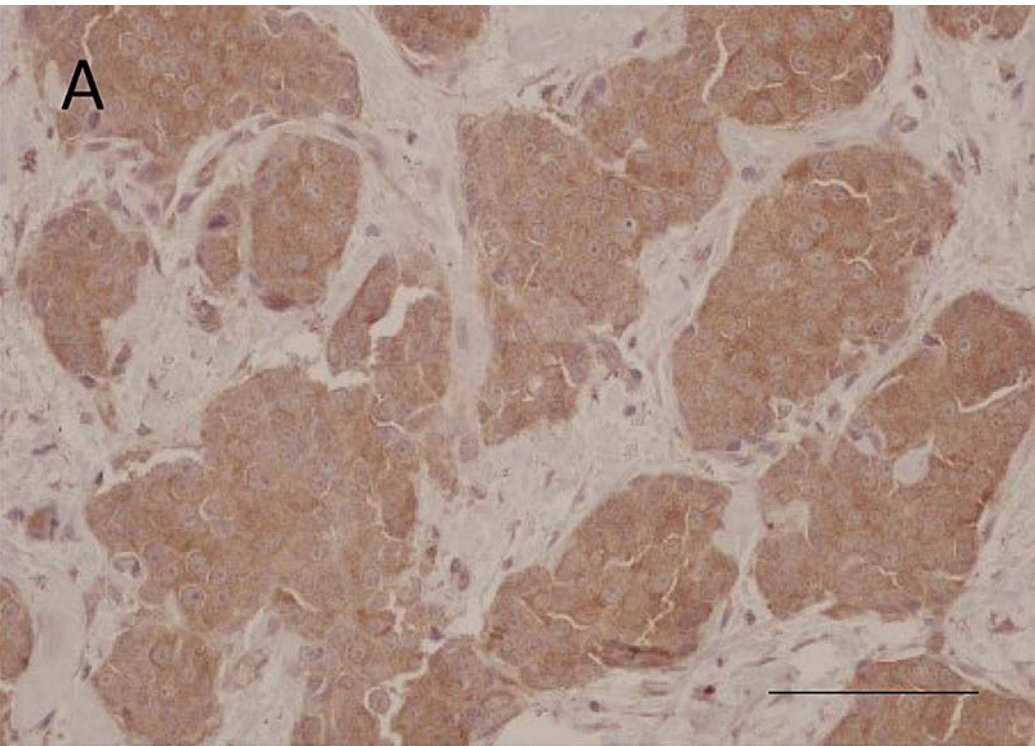
**Supplementary Figure 1:** A) FGD5 staining in the cytoplasm of glandular cells in a section from normal breast. B) Negative control, omitting the primary antibody in a section from normal breast. C) Isotype control, using a section from normal breast. Scale bar = 100  $\mu\text{m}$

**Supplementary Figure 2:** A) FGD5 staining in the cytoplasm of breast cancer cells B) Negative control, omitting the primary antibody in a section from the same tumour. Scale bar = 100  $\mu\text{m}$

**Supplementary Figure 3:** A) FGD5 staining in the cytoplasm of breast cancer cells. B) Isotype control (rabbit IgG, polyclonal), using a section from the same tumour. Scale bar = 100  $\mu\text{m}$

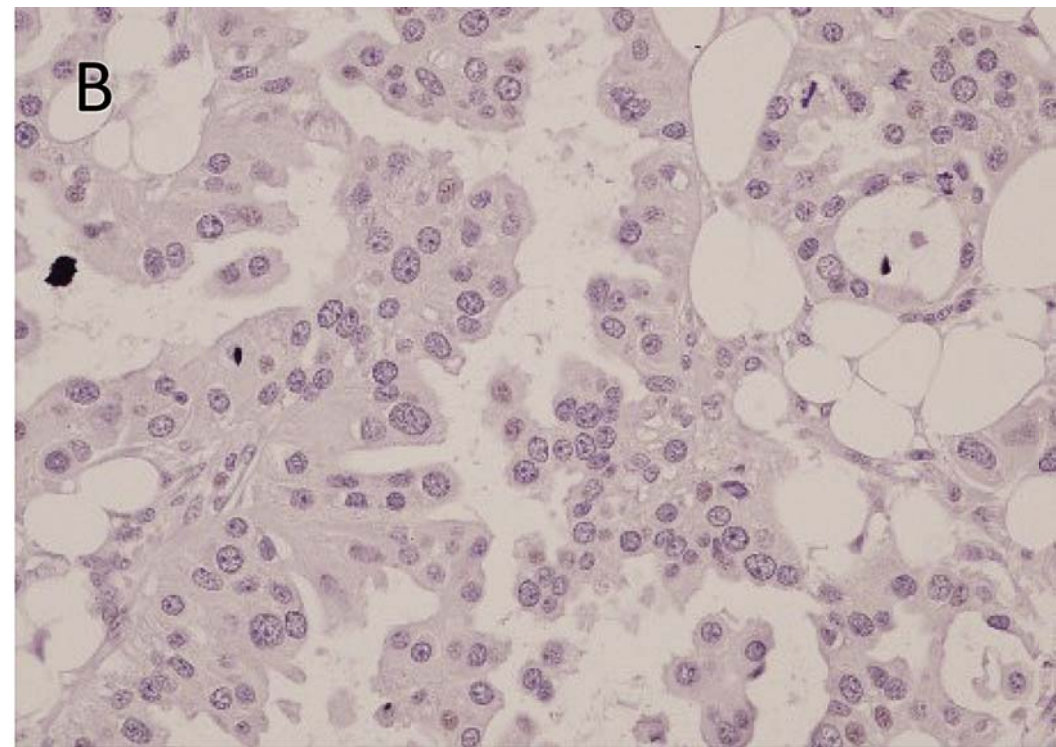
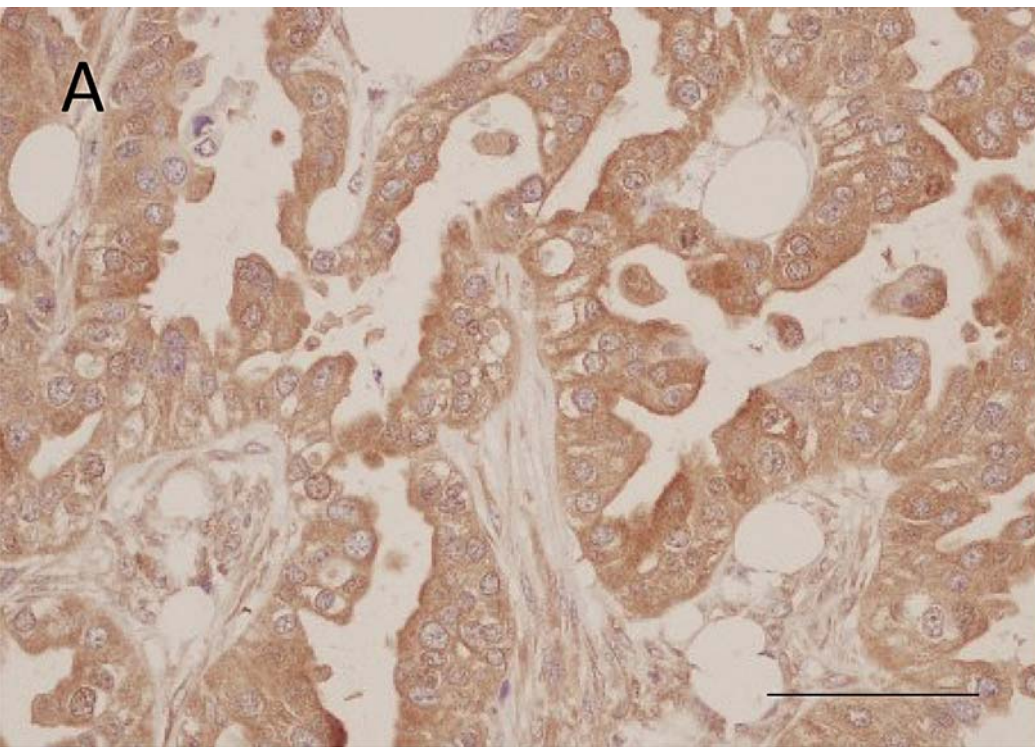


Supplementary Figure 1: A) FGD5 staining in the cytoplasm of glandular cells in a section from normal breast. B) Negative control, omitting the primary antibody in a section from normal breast. C) Isotype control, using a section from normal breast. Scale bar = 100  $\mu$ m



Supplementary Figure 2: A) FGD5 staining in the cytoplasm of breast cancer cells B) Negative control, omitting the primary antibody in a section from the same tumour. Scale bar = 100  $\mu$ m





Supplementary Figure 3: A) FGD5 staining in the cytoplasm of breast cancer cells. B) Isotype control (rabbit IgG, polyclonal), using a section from the same tumour. Scale bar = 100  $\mu$ m