

## Tables

**Supplementary Table 1** Excluded randomised controlled trials found from search strategy and reason.

No	Excluded randomised controlled trials found from search strategy	Reason
1.	Backward walking training to improve mobility in acute stroke: A pilot study <sup>1</sup>	Poster
2.	Effect of retro and forward walking on quadriceps muscle strength, pain, function, and mobility in patients with knee osteoarthritis: a protocol for a randomized controlled trial <sup>2</sup>	Protocol
3.	Effect of backward walking treadmill training on walking capacity after stroke: a randomized clinical trial <sup>3</sup>	Protocol
4.	Effectiveness of backward walking treadmill training in lower extremity function after stroke <sup>4</sup>	Chinese Language
5.	Forward and backward locomotion in individuals with dizziness <sup>5</sup>	Not gait impairment condition
6.	Warm-up reduces delayed onset muscle soreness but cool-down does not: a randomised controlled trial <sup>6</sup>	Healthy subjects

**Supplementary Table 2.** Summary of included studies (n = 21)

<b>Experimental group vs control group</b>	<b>Study/condition</b>	<b>Design</b>	<b>Participants</b>	<b>Intervention</b>	<b>Outcome measures</b>
<b>1. BW with CPT vs CPT</b>	<b>Rathi et al <sup>31</sup> (2017)</b> <b>Low back pain</b>	RCT	Exp: n= 15 Mean age 36.73 Con: n = 15 Mean age 34	Exp = Backward walking (BW) 10 min/session, 5 sessions/day x 4 weeks with conventional physiotherapy treatment (CPT) 10 min Con = CPT 10 min CPT = Heat therapy and strengthening exercises	NPRS Core muscle strength Follow-up = 4 weeks
	<b>Rangey et al <sup>27</sup> (2017)</b> <b>Knee osteoarthritis</b>	Quasi Exp study	Exp: n = 10 (4M, 6F) Mean age 53.4 ± 8.9 Con : n = 10 (1M, 9F) Mean age 49.0 ± 7.2	Exp = BW with CPT 20 min/session, 2 sessions/day x 2 weeks Con 1 = CPT 10 min/day x 2 weeks CPT = Heat therapy, strengthening and stretching exercises.	VAS WOMAC Follow-up = 2 weeks
	<b>Wadhwa et al <sup>24</sup> (2016)</b> <b>Knee osteoarthritis</b>	RCT	Exp: n = 17 (7 M, 10 F) Mean age 65.65 ± 4.26 Con: n = 15(6 M, 9 F) Mean age 67.59 ± 4.78	Exp = BW 10 min/session, 3 weeks with CPT Con = CPT 5 sessions hold/2 sessions of rest, 10 repetitions, 3 days/week for 3 weeks CPT = Heat therapy and strengthening exercises	NPRS WOMAC Follow-up = 3 weeks
	<b>Anadkat et al <sup>32</sup> (2015)</b> <b>Knee osteoarthritis</b>	RCT	Exp: n = 20 (8M, 12F) Mean age 51.30 ± 6.48 Con: n = 20 (11M, 9F) Mean age 49.95 ± 6.93	Exp = BW 10 min/session, 5 days/week (3 weeks) with CPT 20 min/day Con = CPT 20 min/day	VAS WOMAC Follow-up = 3 weeks

Author (Year)	Study Design	Participants (n, Age)	Intervention	Outcome Measures
<b>Manisha et al</b> <sup>25</sup> (2015) <b>Knee osteoarthritis</b>	RCT	Exp: n = 15 Con: n = 15 Age = 40 – 60	Exp = BW 10 min/session, 4 weeks with CPT Con = CPT 4 weeks CPT = Heat therapy and strengthening exercises	Step test WOMAC Follow-up = 4 weeks
<b>Rathi et al</b> <sup>23</sup> (2014) <b>Knee osteoarthritis</b>	RCT	Exp: n = 10 Mean age 53.9 ± 5.7 Con: n = 10 Mean age 53.2 ± 8.24	Exp = BW 10 min/session, 3 days/week (2 weeks) with CPT 20 min/day Con = CPT 20 min/day CPT = Heat therapy, strengthening and stretching exercises	NPRS Reduced WOMAC Quadriceps strength Follow-up = 2 weeks
<b>Gondhalekar et al</b> <sup>9</sup> (2013) <b>Knee osteoarthritis</b>	RCT	Exp: n = 15 (8M) Con: n = 15 (7M) Mean age 63.43 ± 6.202	Exp = BW 10 min/session, 3 sessions/day x 3 weeks with CPT Con = CPT 20 min/session, 2 sessions/day x 3 weeks CPT = Heat therapy and strengthening exercises.	VAS WOMAC Concentric strength of hip abductors and extensors, Follow-up = 3 weeks
<b>Khyatee et al</b> <sup>30</sup> (2013) <b>Knee pain</b>	RCT	Exp: n = 15 (9M, 6F) Mean age 38.8 ± 8.55 Con: n = 15 (7M, 8F) Mean age 36.6 ± 9.47	Exp = BW 2 to 2.5 km/hr for 5 min, 10 days with CPT Con = CPT 10 repetitions, 3 sets/day, 10 days CPT = Strengthening exercises	VAS Quadriceps strength Follow-up = 10 days

**2. BW with CPT including other gait training vs CPT including other gait training**

<b>Yong Kim et al<sup>28</sup> (2017)</b> <b>Stroke</b>	RCT	Exp: n = 17 Mean age 63.35 ± 7.27 Con: n = 17 Mean age 63.33 ± 11.60	Exp = BW with CPT 30 min, 3x/week, 3 weeks Con = CPT 30 min, 3x/week, 3 weeks CPT = functional mobility and strengthening exercises included with other gait training	Gait velocity Cadence Stride length Follow-up = 3 weeks
<b>El Aziz et al<sup>38</sup> (2017)</b> <b>Juvenile rheumatoid arthritis</b>	RCT	Exp: n = 15 (18G, 12B) Mean age 7.06 ± 1.24 Con : n = 15 Mean age 7.38 ± 1.18	Exp = BW 20 min, 3 sessions/week, 12 weeks with CPT 60 min 3 sessions/week, 12 weeks Con = CPT 60 min 3 sessions/week, 12 weeks CPT = stretching and strengthening exercises included with other gait training	Berg balance scale Overall stability Follow-up = 12 weeks
<b>El Basatiny et al<sup>39</sup> (2014)</b> <b>Cerebral palsy</b>	RCT	Exp: n = 15 (14G, 16B) Mean age 11.98 ± 1.21 Con: n = 15 Mean age 12.51 ± 1.27	Exp = BW 25 min, 3 sessions/week, 12 weeks with CPT 60 min 3 sessions/week, 12 weeks Con = CPT 60 min 3 sessions/week, 12 weeks CPT = training for postural stability stretching and strengthening exercises included with other gait training	Overall stability Follow-up = 12 weeks
<b>Khadilkar et al<sup>29</sup> (2011)</b> <b>Anterior cruciate ligament injury</b>	RCT	Exp: n = 15 Mean age 25.48 ± 4.43 Con: n = 15 Mean age 25.88 ± 3.47	Exp = BW 10 min/day with CPT Con = CPT 20 min/day, 4 weeks CPT = strengthening exercises included with other gait training	Quadriceps and hamstring strength Step length Stride length Cadence

					Follow-up = 4 weeks
	<b>Takami et al</b> <sup>11</sup> <b>(2010)</b> <b>Stroke</b>	RCT	Exp: n = 12 (6M), Mean age 66.1 ± 6.3, Hemiplegic side (right 7) Con: n = 12 (5M), Mean age 66.9 ± 10.6, Hemiplegic side (right 10)	Exp = Partial body weight supported BW training on treadmill with CPT Con = Partial body weight supported forward walking (FW) training on treadmill with CPT 30 min of CPT and 10 min of walking training - either backward or forward; total 40 min, 6 x/week (3weeks) CPT = functional mobility and strengthening exercises, included with gait training	Berg balance scale Velocity Cadence Step length Follow-up = 3 weeks
	<b>Yang et al</b> <sup>2</sup> <b>(2005)</b> <b>Stroke</b>	RCT	Exp: n = 13 (10M) Mean age 63.38 ± 7.7 Hemiplegic side (right 8) Con: n = 12 (9M) Mean age 63.42 ± 11.06 Hemiplegic side (right 8)	Exp = BW training for 30 min with CPT for 40 min, 3x/week (3 weeks). Con = CPT 40 min; 3x/week (3 weeks). CPT = functional mobility and strengthening exercises, included with other gait training	Velocity Cadence Stride length Follow-up = 3 weeks
<b>3. BW with CPT vs CPT with other gait /physiotherapy training</b>	<b>Rose et al</b> <sup>40</sup> <b>(2018)</b> <b>Stroke</b>	RCT	Exp: n = 10 (4M, 4F) Mean age 53.8 ± 12.1 Hemiplegic side (right 3, left 5) Con: n = 8 (2M, 6F) Mean age 66.6 ± 7.3 Hemiplegic side (right 3, left 5)	Exp = BW with CPT Con = CPT with standing balance training  CPT = other physiotherapy training	Berg balance scale Follow-up = 12 weeks

---

	<b>Abdel aziem and El Basatiny</b> <sup>37</sup> (2016) <b>Cerebral palsy</b>	RCT	Exp: n = 15 (14G, 16B) Mean age $11.63 \pm 1.40$ Con: n = 15 Mean age $11.46 \pm 1.43$	Exp = BW 25 min, 3 sessions/week, 12 weeks with CPT 60 min 3 sessions/week, 12 weeks Con = CPT 60 min, 3 sessions/week, 12 weeks CPT = training for postural stability stretching and strengthening exercises, included with other gait training	Step length Walking velocity Cadence Follow-up = 12 weeks
	<b>Walusiak et al</b> <sup>36</sup> (2008) <b>Senile osteoporosis</b>	RCT	Exp: n = 20 (F) Mean age $72.5 \pm 5.62$ Con: n = 17 (F) Mean age $72.7 \pm 6.08$	Exp = BW with CPT 10 min/session, 5 sessions/day x 3 weeks Con = CPT with gait training (FW) 10 min/session, 5 sessions/day x 3 weeks CPT = balance, strengthening and stretching exercises	Quadriceps strength Follow-up = 3 weeks
<b>4. BW vs other gait training</b>	<b>Grobbelaar et al</b> <sup>26</sup> (2017) <b>Parkinson's disease</b>	RCT	Exp: n = 16 Mean age $72 \pm 6$ Con: n = 15 Mean age $70 \pm 11$	Exp = BW Con = gait training (Forward walking) 45-60min, 3 sessions/week, 8 weeks	Gait speed Cadence Stride length Double limb support Follow-up = 8 weeks
	<b>Kim et al</b> <sup>35</sup> (2017) <b>Stroke</b>	RCT	Exp: n = 15 (11M, 4F), Mean age $48.27 \pm 16.05$ , Hemiplegic side (right 5) Con: n = 15 (7M, 8F), Mean age $50.73 \pm 13.50$ , Hemiplegic side (right 7)	Exp = Progressive body weight supported treadmill BW training 30min/day, 5x/week, 8 weeks Con = Progressive body weight supported treadmill FW training	Step length Stride length Single limb support Double limb support Step time Cadence

---

---

					Follow-up = 8 weeks
	<b>Kim et al</b> <sup>34</sup> <b>(2014)</b> <b>Stroke</b>	RCT	Exp: n = 12 (8M), Mean age 51.00 ± 14.60, Hemiplegic side (right 6) Con: n = 12 (8M), Mean age 52.75 ± 9.21, Hemiplegic side (right 6)	Exp = Progressive body weight supported treadmill BW training 30min/day, 6 weeks Con = Progressive body weight supported treadmill FW training	Step length Single limb support Step time Follow-up = 6 weeks
<b>5. BW vs no intervention</b>	<b>Zhang et al</b> <sup>33</sup> <b>(2014)</b> <b>Diabetic peripheral neuropathy</b>	RCT	Exp: n = 30 (16M), Mean age 52.7 ± 6.5 Con: n = 30 (16M), Mean age 52.7 ± 6.2	Exp = BW Con = No intervention	Plantar pressure Follow-up = 12 weeks

---

Exp = experimental group, Con = control group, M = male, F = female, n = number of participants, RCT = randomized control studies, BW = backward walking, FW = forward walking, CPT = conventional physiotherapy treatment, VAS = visual analogue scale, NPRS = numerical pain rating scale, WOMAC = Western Ontario and McMaster Universities Arthritis Index.

**Supplementary Table 3.** PEDro scale scores for included studies (n =21)

<b>Based on intervention</b>	<b>Study/condition</b>	<b>1.</b>	<b>2.</b>	<b>3.</b>	<b>4.</b>	<b>5.</b>	<b>6.</b>	<b>7.</b>	<b>8.</b>	<b>9.</b>	<b>10.</b>	<b>Total (0-10)</b>
<b>1. BW with CPT vs CPT</b>	<b>Rathi et al <sup>31</sup> (2017) LBP</b>	Y	N	Y	N	N	N	Y	N	Y	Y	5
	<b>Rangey et al <sup>27</sup> (2017) OA knee</b>	N	N	N	N	N	N	N	N	Y	Y	2
	<b>Wadhwa et al <sup>24</sup> (2016) OA knee</b>	Y	N	Y	N	N	N	Y	N	Y	Y	5
	<b>Anadkat et al <sup>32</sup> (2015) OA knee</b>	Y	Y	Y	N	N	N	Y	N	Y	Y	6
	<b>Manisha et al <sup>25</sup> (2015) OA knee</b>	Y	N	Y	N	N	N	Y	N	Y	Y	5
	<b>Rathi et al <sup>23</sup> (2014) OA knee</b>	Y	N	Y	N	N	N	Y	N	Y	Y	5
	<b>Gondhalekar et al <sup>9</sup> (2013) OA knee</b>	Y	N	Y	N	N	N	Y	N	Y	Y	5
<b>2. BW with CPT including other gait training vs CPT including other gait training</b>	<b>Khyatee et al <sup>30</sup> (2013) Knee pain</b>	Y	N	Y	N	N	N	Y	N	Y	Y	5
	<b>Yong Kim et al <sup>28</sup> (2017) Stroke</b>	Y	Y	Y	N	N	Y	N	N	Y	Y	6
	<b>El Aziz et al <sup>38</sup> (2017) JRA</b>	Y	Y	Y	N	N	N	Y	Y	Y	Y	7
	<b>El Basatiny et al <sup>39</sup> (2014) CP</b>	Y	Y	Y	N	N	Y	Y	N	N	Y	6
	<b>Khadilkar et al <sup>29</sup> (2011) ACL</b>	Y	N	Y	N	N	N	Y	N	Y	Y	5
	<b>Takami et al <sup>11</sup> (2010) Stroke</b>	Y	N	Y	N	N	N	N	N	Y	Y	4
	<b>Yang et al <sup>2</sup> (2005) Stroke</b>	Y	Y	Y	N	N	N	Y	N	Y	Y	6
<b>3. BW with CPT vs CPT with other gait / physiotherapy training</b>	<b>Rose et al <sup>40</sup> (2018) Stroke</b>	Y	N	Y	N	N	Y	N	N	Y	Y	5
	<b>Abdel aziem and El Basatiny <sup>37</sup> (2016) CP</b>	Y	Y	Y	N	N	Y	Y	N	Y	Y	7



<b>4.BW vs other gait training</b>	<b>Walusiak et al <sup>36</sup> (2008) Senile osteoporosis</b>	Y	N	Y	N	N	N	Y	N	Y	Y	5
	<b>Grobbelaar et al <sup>26</sup> (2017) PD</b>	Y	Y	Y	Y	N	N	Y	N	Y	Y	7
	<b>Kim et al <sup>35</sup> (2017) Stroke</b>	Y	Y	Y	Y	Y	N	Y	N	Y	Y	8
<b>5.BW vs no intervention</b>	<b>Kim et al <sup>34</sup> (2014) Stroke</b>	Y	N	Y	N	N	N	N	N	Y	Y	4
	<b>Zhang et al <sup>33</sup> (2014) DPN</b>	Y	N	Y	N	N	N	Y	Y	Y	Y	6

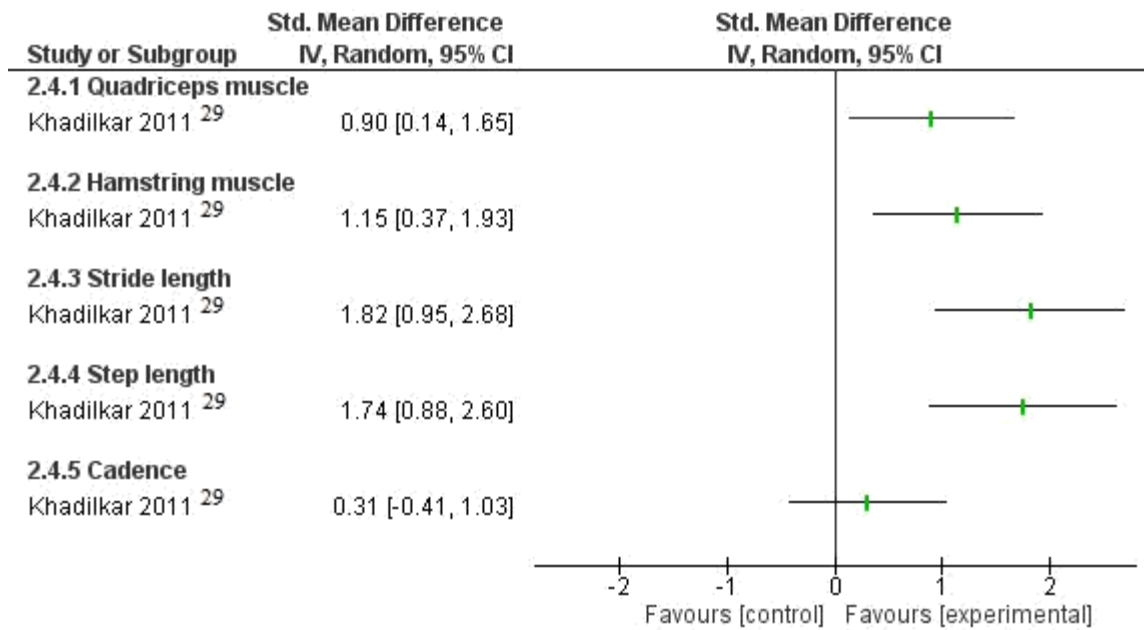
Y = yes; N = no; LBP = low back pain; OA = osteoarthritis; ACL = anterior cruciate ligament; PD = Parkinson's disease; CP = cerebral palsy; JRA = juvenile rheumatoid arthritis; DPN = diabetic peripheral neuropathy.

1. Random allocation, 2. Concealed allocation, 3. Baseline comparability, 4. Blind subjects, 5. Blind therapist, 6. Blind assessor, 7. Adequate follow-up, 8. Intention to treat, 9. Between-group comparison, 10. Point estimate and variability.

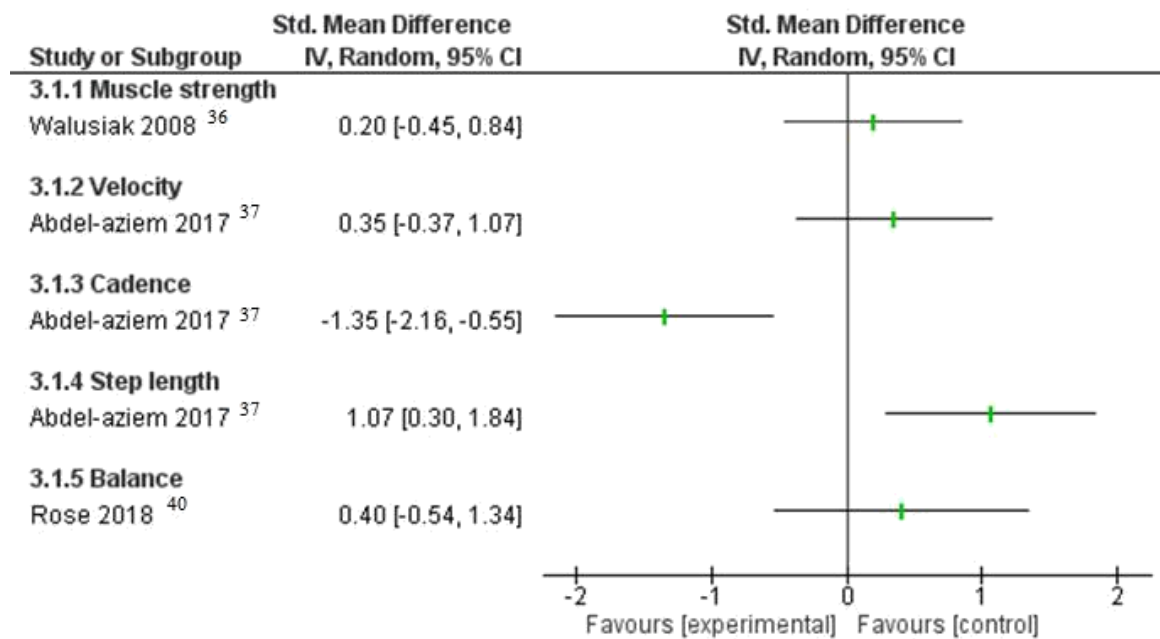
Search Name: march6 2018  
Date Run: 06/03/18 18:02:17.698  
Description:

ID	Search	Hits	
#1	walking:ti,ab,kw	(Word variations have been searched)	16075
#2	gait	5720	
#3	backward	1101	
#4	retro	239	
#5	#3 and #1	119	
#6	#3 and #2	95	
#7	#4 and #1	8	
#8	#4 and #2	6	
#9	#5 or #6 or #7 or #8	162	
#10	randomized controlled trial:pt		446152
#11	controlled clinical trial:pt		426735
#12	randomized:ti,ab,kw	521534	
#13	placebo:ti,ab	192876	
#14	randomly:ti,ab	169394	
#15	trial:ti	210354	
#16	#10 or #11 or #12 or #13 or #14 or #15		864497
#17	animals not humans	1310	
#18	#16 not #17	863621	
#19	#9 and #18 in Trials	118	

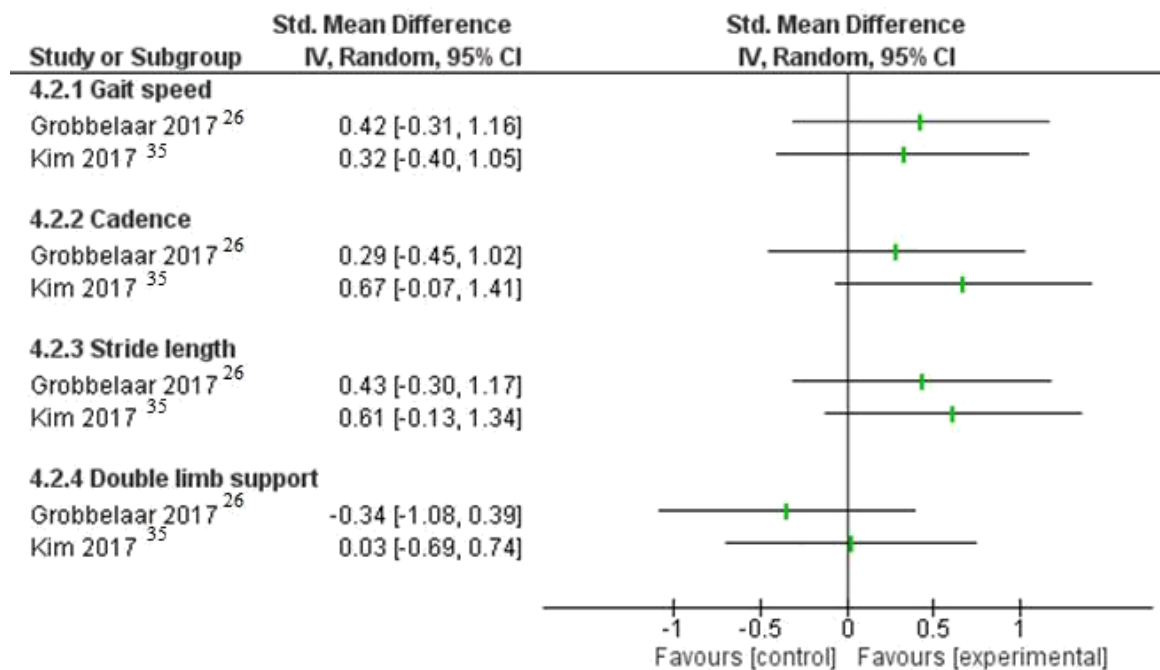
**Supplementary Figure 1.** Search strategy (eg: Cochrane library)



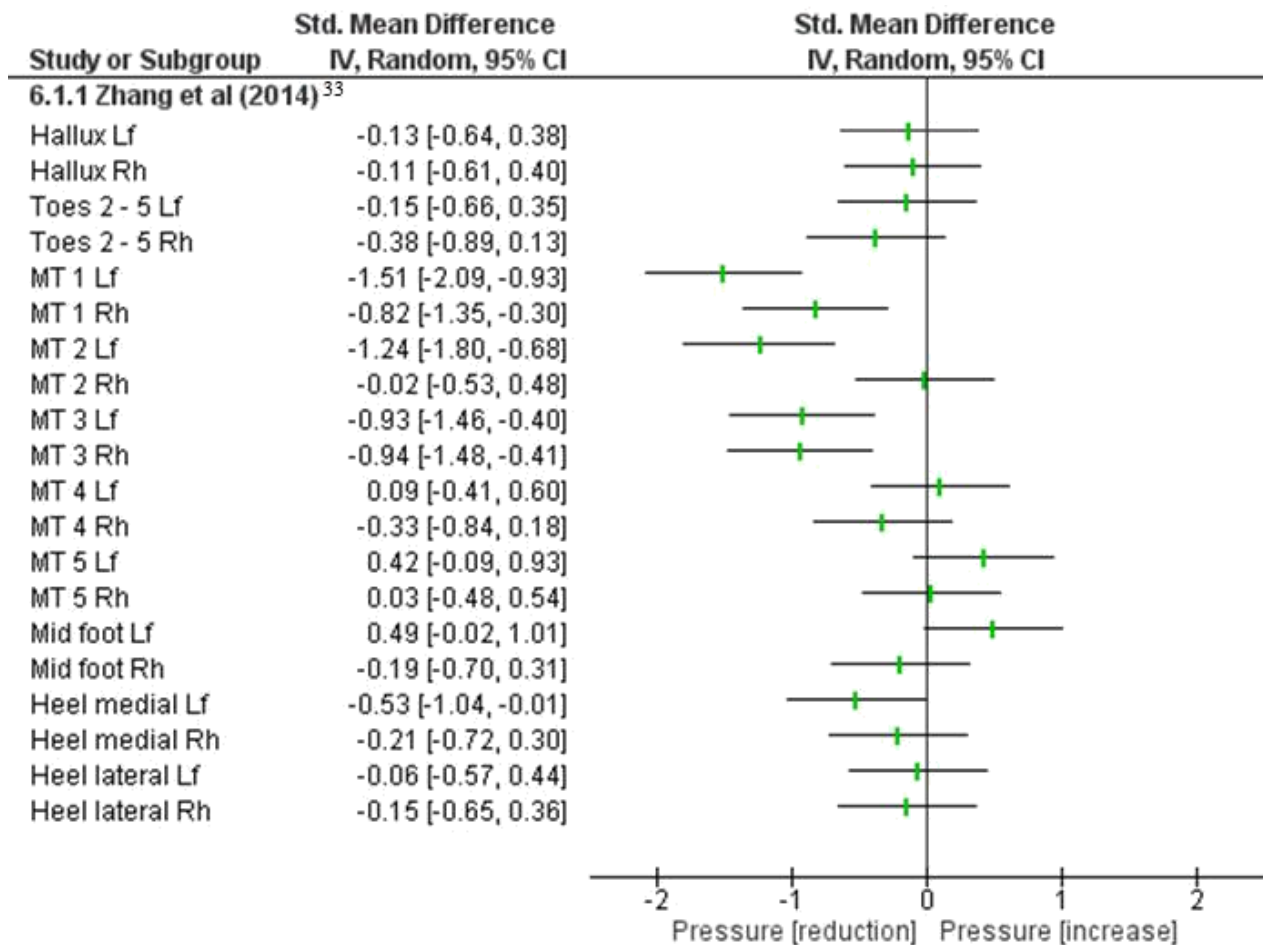
**Supplementary Figure 2.** Standardized Mean Difference (95% confidence interval) calculated from the one study for patients with anterior cruciate ligament injury who underwent backward walking with conventional physiotherapy treatment including other gait training vs conventional physiotherapy treatment including other gait training for muscular strength and gait parameters.



**Supplementary Figure 3.** Standardized Mean Difference (95% confidence interval) calculated for patients suffering from senile osteoporosis, cerebral palsy and stroke who underwent backward walking with conventional physiotherapy treatment *versus* conventional physiotherapy treatment with other gait/physiotherapy training. One study for muscle strength, one study for velocity, cadence and step length, and one study for balance.



**Supplementary Figure 4.** Standardized Mean Difference (95% confidence interval) calculated from the two studies of patients with Parkinson’s disease and who suffered stroke and who underwent backward walking vs other gait training for improving gait parameters



**Supplementary Figure 5.** Standardized Mean Difference (95% CI) calculated from the one study for patients with diabetic peripheral neuropathy who underwent backward walking vs no intervention to relieve plantar pressure.

## References:

1. Rose D, De Mark L. Backward walking training to improve mobility in acute stroke: A pilot study. *Arch Phys Med Rehabil* 2013; 94: e36.
2. Alghadir A, Anwer S. Effect of retro and forward walking on quadriceps muscle strength, pain, function, and mobility in patients with knee osteoarthritis: a protocol for a randomized controlled trial. *BMC Musculoskelet Disord* 2016; 17: 161.
3. Michaelsen SM, Ovando AC, Romaguera F, et al. Effect of backward walking treadmill training on walking capacity after stroke: a randomized clinical trial. *Int J Stroke* 2014; 9: 529–532.
4. Weng C, Wang J, Pan X, et al. Effectiveness of backward walking treadmill training in lower extremity function after stroke. *Zhonghua Yi Xue Za Zhi* 2006; 86: 2635–8.
5. Davalos-Bichara M, Zuniga MG, Agrawal Y, et al. Forward and backward locomotion in individuals with dizziness. *Gait Posture* 2014; 40: 499–503.
6. Law RYW, Herbert RD. Warm-up reduces delayed-onset muscle soreness but cool-down does not: a randomised controlled trial. *Aust J Physiother* 2007; 53: 91–95.