

Supplementary files

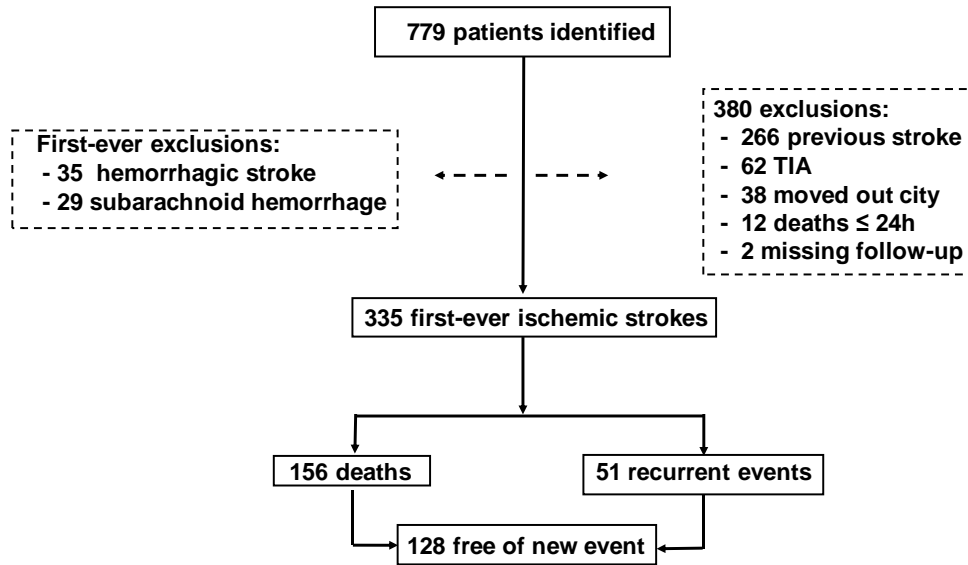


Figure S1 Flowchart of stroke recurrence or death over 5 years after first-ever ischemic stroke in 2010, Joinville, Brazil

| Table S1: Work-up diagnosis according to stroke subtypes | | | | | | | | |
|---|---------------------|------------------|----------------|-----------------|--------------------------------|--------------------------------|---------------------------------|-------------------------------|
| | Total 335 (100%) | SAD 113 (34%) | CE 91 (27%) | LAD 66 (20%) | UND _{INC} 44 (13%) | UND _{cryp} 14 (4%) | UND _{more} 1 (0.3%) | Other determined 6 (2%) |
| Brain CT | 335 (100%) | 113 (100%) | 91 (100%) | 66 (100%) | 44 (100%) | 14 (100%) | 1 (100%) | 6 (100%) |
| Brain MRI | 67 (20%) | 22 (19%) | 16 (18%) | 19 (29%) | 2 (5%) | 9 (64%) | 0 | 0 |
| ECG | 335 (100%) | 113 (100 %) | 91 (100%) | 66 (100%) | 44 (100%) | 14 (100%) | 1 (100%) | 6 (100%) |
| TTE | 254 (76%) | 98 (87%) | 74 (81%) | 56 (85%) | 12 (27%) | 12 (86%) | 1 (100%) | 6 (100%) |
| TEE | 37 (11%) | 9 (8%) | 9 (1%) | 13 (20%) | 0 | 3 (21%) | 0 | 0 |
| Holter-ECG monitoring | 4 (1%) | 1 (1%) | 3 (3%) | 0 | 0 | 0 | 0 | 0 |
| Carotid Doppler | 298 (89%) | 113 (100 %) | 91 (100%) | 66 (100%) | 13 (30%) | 14 (100%) | 1 (100%) | 6 (100%) |
| TCD | 136 (41%) | 57 (50 %) | 41 (45%) | 29 (49%) | 3 (7%) | 5 (36%) | 1 (100%) | 0 |
| MRA | 71 (21%) | 20 (18%) | 14 (15%) | 23 (35%) | 3 (7%) | 7 (50%) | 0 | 4 (67%) |

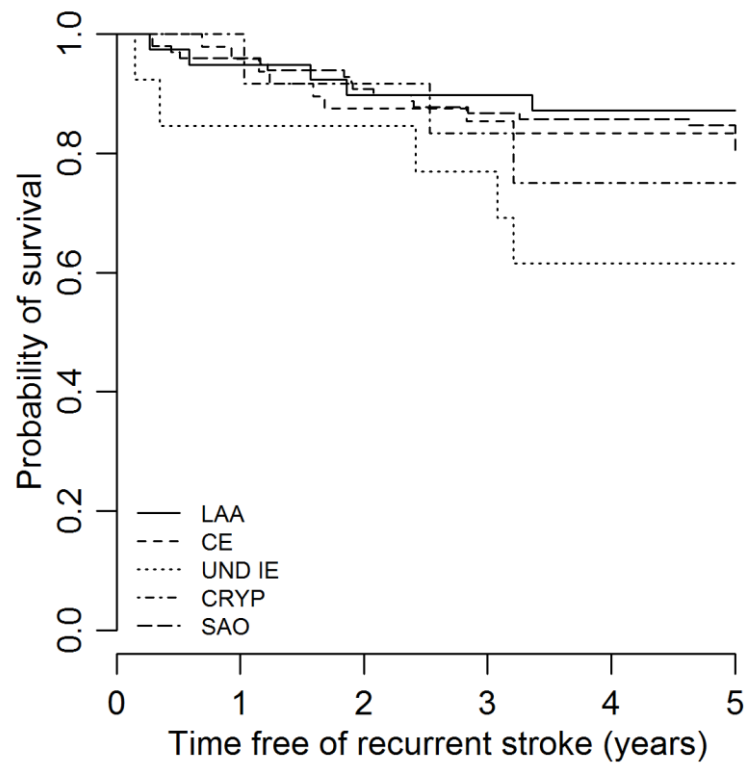


Figure S2 Kaplan-Meier survival curve showing the probability that, given survival, a patient with a ischemic stroke (IS) will remain free of a recurrent stroke, stratified by IS subtype (other determined IS not included).

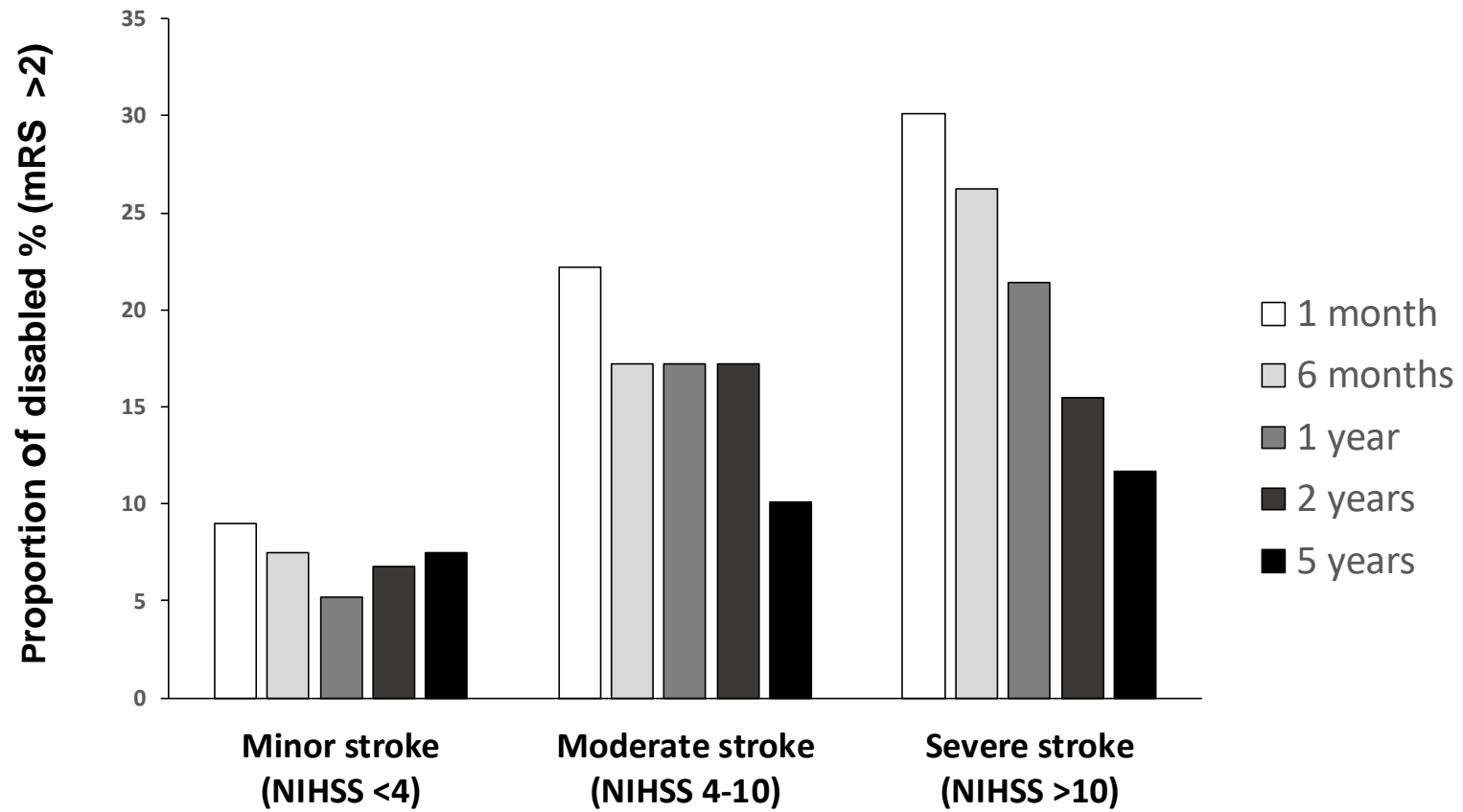


Figure S3. Rates of disability at follow-up by severity of index IS event.
 NIHSS : National Institute of Health Stroke Scale.

Table S2. Regression model incorporating long-term survival with the Weibull method for ischemic stroke subtypes survival analysis*

| Parameter | Estimation | Standard error | 95% IC | | p-value |
|---------------|------------|----------------|--------|--------|---------|
| Intercept | 5.283 | 0.581 | 4.145 | 6.422 | <0.0001 |
| LAD | -1.946 | 0.692 | -3.302 | -0.591 | 0.005 |
| CE | -3.073 | 0.636 | -4.319 | -1.827 | <0.0001 |
| UND -II | -4.905 | 0.718 | -6.312 | -3.499 | <0.0001 |
| CRYPT | -1.022 | 1.252 | -3.475 | 1.431 | 0.414 |
| Scale | 2.290 | 0.180 | 1.964 | 2.670 | |
| Weibull Shape | 0.437 | 0.034 | 0.375 | 0.509 | |

* Weibull method using small artery disease ischemic stroke as a reference. LLD: large artery disease; CE: cardioembolic; UND: undetermined due to incomplete investigation; CRYP: cryptogenic

Table S3. Regression model incorporating long-term recurrence for ischemic stroke subtypes *

| Parameter | Estimation | Standard error | 95% IC | | p-value |
|---------------|------------|----------------|--------|-------|----------|
| Intercept | 3.323 | 0.373 | 2.593 | 4.054 | < 0.0001 |
| LAD | 0.474 | 0.564 | -0.632 | 1.579 | 0.401 |
| CE | 0.151 | 0.470 | -0.770 | 1.072 | 0.748 |
| UND-II | -0.945 | 0.575 | -2.072 | 0.182 | 0.100 |
| CRYPT | -0.324 | 0.693 | -1.683 | 1.034 | 0.640 |
| Scale | 1.113 | 0.171 | 0.825 | 1.503 | |
| Weibull Shape | 0.898 | 0.138 | 0.665 | 1.213 | |

* Weibull method using small artery disease ischemic stroke as a reference. LLA: large artery disease; CE: cardioembolic; UND li: undetermined incomplete investigation; CRYP: cryptogenic

