

Analysis of recurrent vascular intervention

Recurrent vascular intervention was performed in 36 cases after bypass and in 34 cases after PTA. In patients unfit for bypass surgery, recurrent intervention was rarely performed. The type of recurrent vascular intervention is shown in table 1. Due to the small number in the subgroups, limb salvage analysis was only performed for the main groups in the study.

Type of intervention	BYPASS	PTA	PTA ONLY
THROMBECTOMY	7	0	0
BYPASS	7	7	0
OTHER OPEN SURGERY	2	1	0
THROMBOLYSIS	4	0	1
OTHER ENDOVASCULAR	13	21	1
HYBRID	3	3	0
TOTAL OPEN SURGERY	16	8	0
TOTAL ENDOVASCULAR	17	21	2
TOTAL	36	32	2

Tab. 1 Type of recurrent intervention depending on treatment group

Limb salvage in patients with recurrent intervention

Kaplan-Meier estimate for limb salvage at 5 years in patients with recurrent intervention was 62 % (SE = .09) after bypass surgery and 79 % (SE = .07) after PTA. There was no significant difference between the treatment groups ($p = .74$). After bypass surgery, limb salvage was better in cases with single intervention ($p = .03$), while there was no significant difference in the corresponding groups after PTA ($p = .70$).

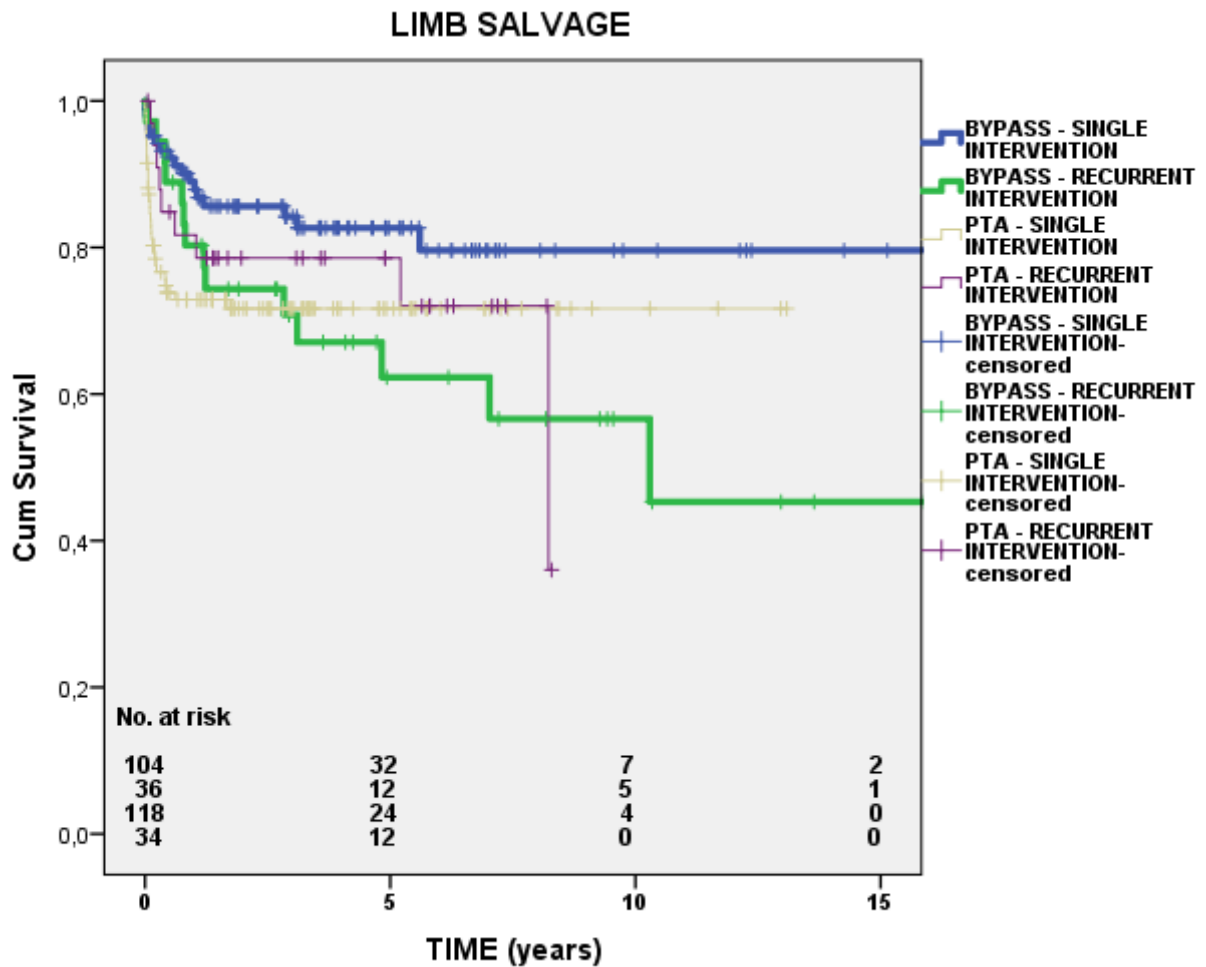


Fig. 1 Limb salvage in the treatment groups depending on recurrent intervention