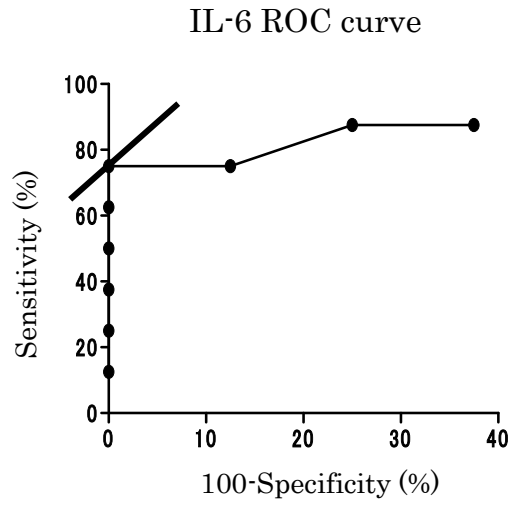
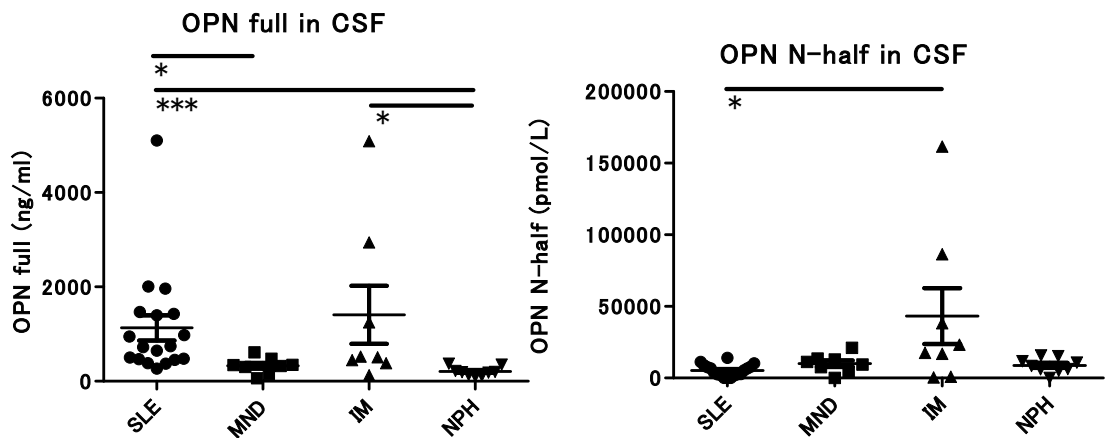


Suppl. Fig. 1



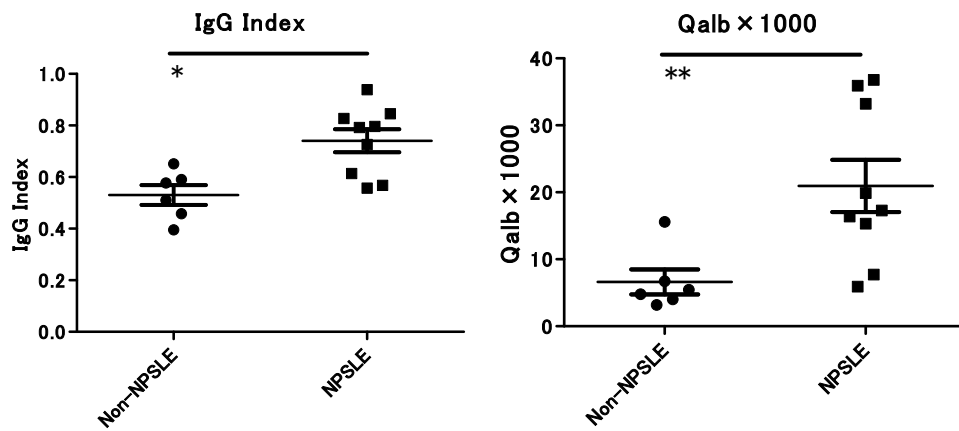
ROC curve with IL-6 in CSF to diagnose NPSLE. When the cut off value of OPN full in CSF was set as 74.9 pg/ml, sensitivity was 75.0% and specificity was 100% in the diagnosis of NPSLE. AUC: 0.89.

Suppl. Fig. 2



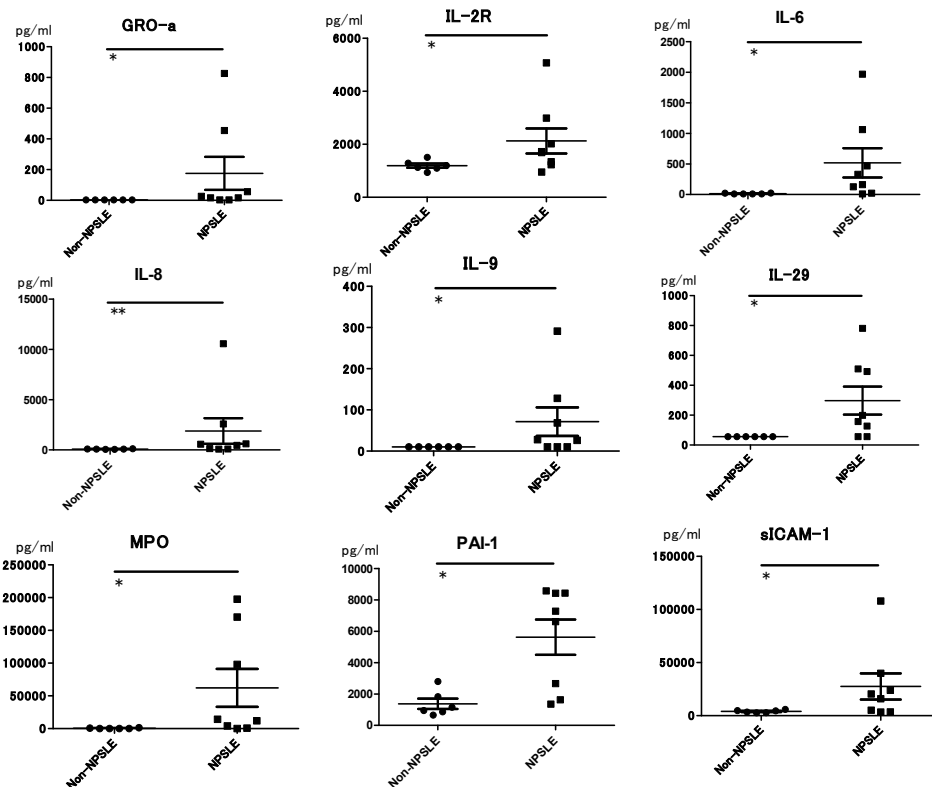
Concentration of OPN full and OPN N-half in CSF of SLE and other neurological diseases. * $p < 0.05$, *** $p < 0.001$ by Dunn's multiple comparison test. IM: infectious meningoencephalitis, MND: motor neuron disease, NPH: normal pressure hydrocephalus.

Suppl. Fig. 3



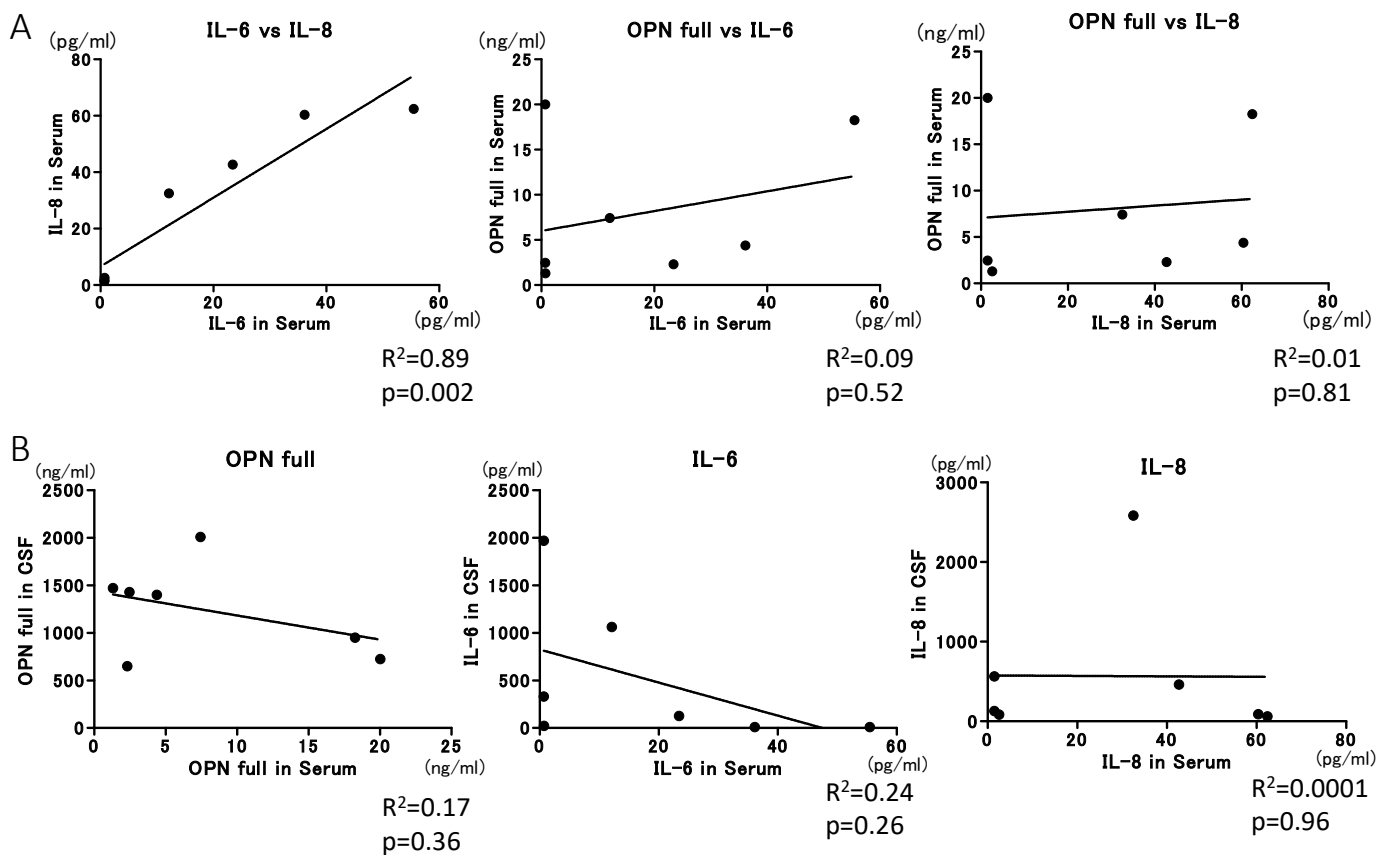
IgG index and Qalb in NPSLE. IgG index is calculated as $([CSF\ IgG] / [CSF\ Alb]) / ([Serum\ IgG] / [Serum\ Alb])$. Qalb is calculated as $([CSF\ Alb] / [Serum\ Alb])$. * $p < 0.05$, ** $p < 0.01$ by Mann-Whitney U test.

Suppl. Fig. 4



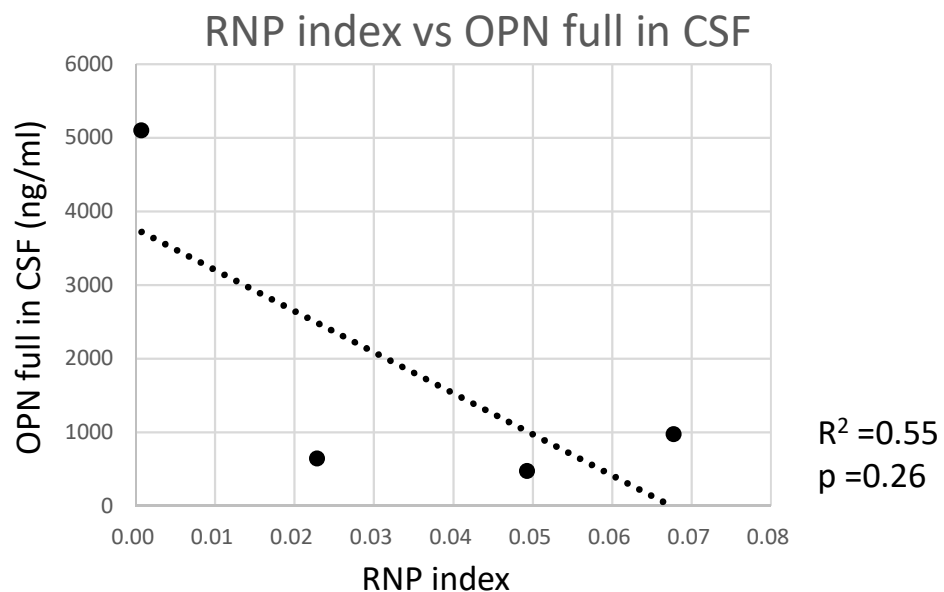
Cytokine and chemokine concentrations in CSF of non-NPSLE and NPSLE patients. In multiplex analysis, 41 of 67 molecules were measurable. Measurements of 9 molecules tended to be higher in NPSLE than in non-NPSLE patients. The p value for each Mann-Whitney U test (* $p < 0.05$, ** $p < 0.01$) is shown. However, significance could not be determined because the null hypothesis could not be rejected when Bonferroni's correction was performed for repeated testing of 41 measurable molecules. GRO-a: growth related oncogene-alpha, IL: interleukin, MPO: myeloperoxidase, PAI-1: plasminogen activator inhibitor-1, sICAM-1: soluble intercellular adhesion molecule-1.

Suppl. Fig. 5



A: Correlation of IL-6, IL-8, and OPN full in sera of NPSLE and non-NPSLE by a linear progression analysis. There was a correlation between serum IL-6 and IL-8. However, serum OPN full did not correlate with serum IL-6 or IL-8.
 B: Correlation of each cytokine level between serum and CSF. No significant correlations were found.

Suppl. Fig. 6



Correlation of OPN full in CSF with RNP index in NPSLE. In the present study, there were 4 patients whose anti-RNP antibody in CSF was positive. No significant correlation was found between OPN full in CSF and RNP index by a linear progression analysis. RNP index is calculated as $([\text{CSF anti-U1 RNP antibodies}]/[\text{serum anti-U1 RNP antibodies}])/([\text{CSF IgG}/\text{serum IgG}])$, according to the study by Sato et al²⁰.

Suppl. Table 1. Classification of NPSLE

NPSLE (N = 11)		ACR Classification of NPSLE*
No.1	Psychosis, Seizure disorders	
No.2	Acute confusional state, Demyelinating syndrome, Seizure disorders	
No.3	Cognitive dysfunction, Mood disorder	
No.4	Acute confusional state	
No.5	Demyelinating syndrome, Polyneuropathy	
No.6	Acute confusional state, Demyelinating syndrome	
No.7	Headache	
No.8	Acute confusional state, Psychosis, Seizure disorders	
No.9	Aseptic meningitis	
No.10	Demyelinating syndrome	
No.11	Acute confusional state, Psychosis	

*Arthritis Rheum. 1999; 42: 599-608.

Suppl. Table 2. Diagnosis of non-NPSLE

Non-NPSLE (N = 7)	Diagnosis	OPN measurement	Multiplex analysis
No. 1	Dizziness due to anemia	<input type="radio"/>	<input type="radio"/>
	Mononeuropathy due to cubital tunnel	<input type="radio"/>	<input type="radio"/>
No. 2	Depression	<input type="radio"/>	<input type="radio"/>
No. 3	Temporal lobe epilepsy	<input type="radio"/>	<input type="radio"/>
No. 4	Depression	<input type="radio"/>	
No. 5	Neurosis	<input type="radio"/>	<input type="radio"/>
No. 6	Steroid myopathy	<input type="radio"/>	<input type="radio"/>

Suppl. Table 3. Profiles of patients whose OPN, cytokine, and chemokine levels in the CSF were examined

	Non-NPSLE ¹⁾ (N = 6)	NPSLE (N = 8)
Age	47.2 ± 19.2	35.0 ± 15.0
Sex ratio (male : female)	0:6	1:7
Anti-dsDNA Ab (IU/L) (Min-max)	8.5 ± 14.1 (0 - 37)	62.5 ± 104.5 (0 - 300)
SLEDAI (Min-max)	2.3 ± 3.9 (0 - 10)	17.9 ± 6.0 (10 - 26)
PSL (mg/day)	8.8 ± 6.6	8.7 ± 4.7
Immunosuppressants	TAC:1	AZA:1 MZB:1 CyA + MZB:1

¹⁾SLE patients without NPSLE. Values are expressed as means ± SD and ranges (minimum to maximum). Ab: antibody, AZA: azathioprine, CyA: ciclosporin A, MZB: mizoribine, NPSLE: neuropsychiatric SLE, PSL: prednisolone, SLE: systemic lupus erythematosus, SLEDAI: SLE disease activity index, TAC: tacrolimus.