

Appendix Table A1. Summary of The Histological Assessment^a

Time point Treatment	Cellularity ^b %	Vascularity ^c bv/ low PF	Collagen fiber orientation ^d %	Total score ^e
2 weeks				
Control (n = 6)	556 ± 60.0	32.3 ± 8.7	30.0 ± 7.2	3.8 ± 0.4
FGF-2 (n = 6)	590 ± 57.1	30.6 ± 11.8	28.9 ± 7.6	3.7 ± 0.5
<i>P</i> value	.230	.872	.749	.631
6 weeks				
Control (n = 6)	379 ± 92.4	16.8 ± 3.8	50.7 ± 5.2	6.2 ± 1.2
FGF-2 (n = 6)	283 ± 27.5	18.9 ± 3.4	66.0 ± 6.0]*	6.8 ± 0.8
<i>P</i> value	.078	.200	.007	.262
12 weeks				
Control (n = 6)	308 ± 47.6]*	12.4 ± 3.2]*	54.3 ± 6.3]*	7.2 ± 0.8]*
FGF-2 (n = 6)	249 ± 19.2]*	7.6 ± 2.5]*	68.7 ± 6.8]*	9.3 ± 1.0]*
<i>P</i> value	.025	.010	.025	.004

^aAll values are the mean ± standard deviation.

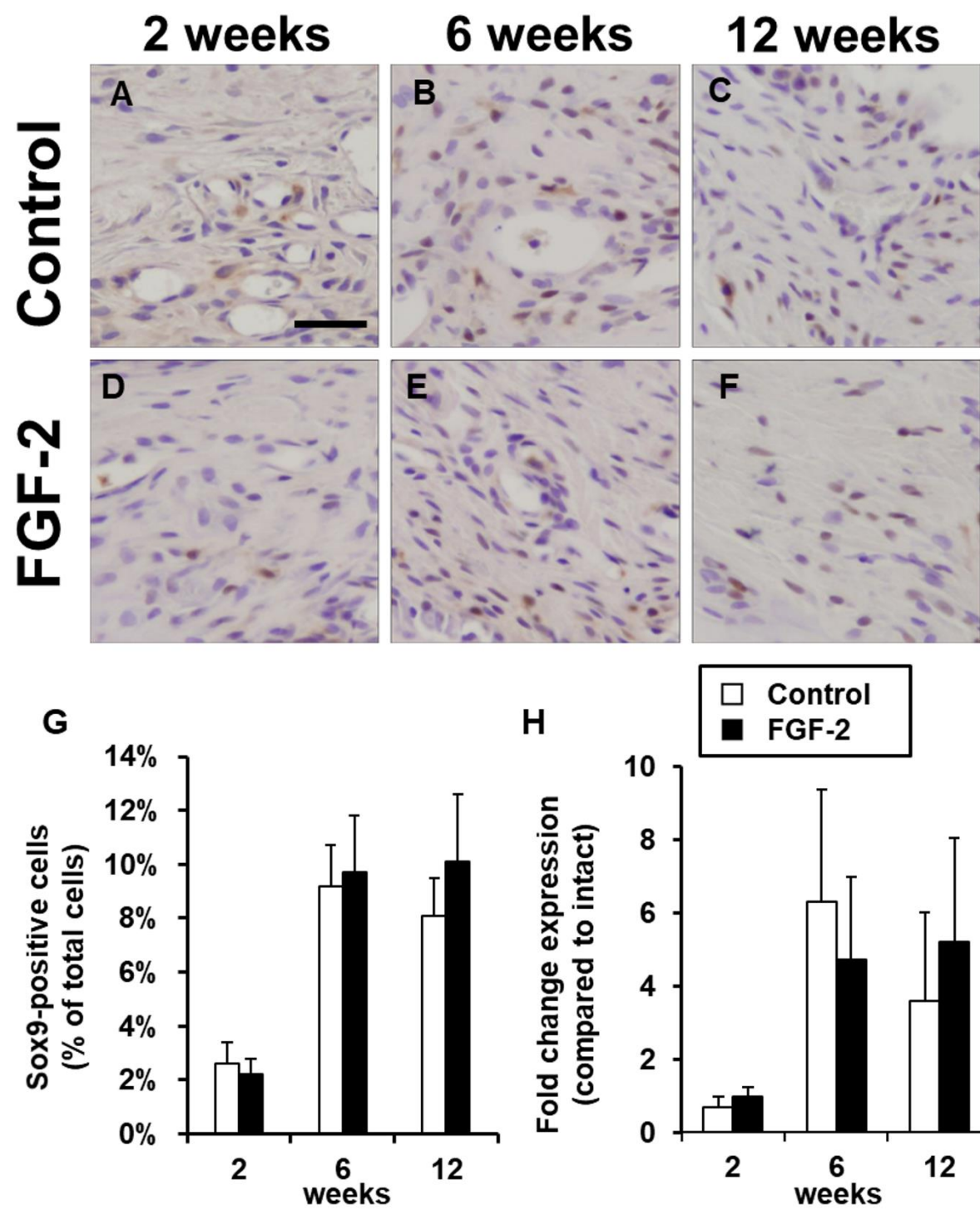
^bNumber of cells per region of interest from each section; percentages represent relative values compared to the values from normal tendon-to-bone sections (756 ± 40.0 cells/mm², n = 6), which were set to 100%.

^cNumber of blood vessels per low PF (100-fold magnification) from each section; bv, blood vessel; PF, power field.

^dGray scale per region of interest from each section as measured using Image J; percentages represent relative values compared to the values from normal tendon-to-bone sections (192.2 ± 17.5 gray scale, n = 6), which were set to 100%.

^eScores represent a total score of three parameters including cellularity, vascularity and collagen fiber orientation. A perfect score in this scoring system is 12 points.

*Significantly different between groups at the same time point (*P* < 0.05).



Appendix Figure A1. Immunostaining for Sox9 at 2, 6, and 12 weeks postoperation (A–C: control; D–F: FGF-2). Percentage of Sox9-positive cells in the region of interest at the insertion site (G). The sections were counterstained with hematoxylin. Bars, 50 μ m. Columns represent mean \pm one standard deviation.