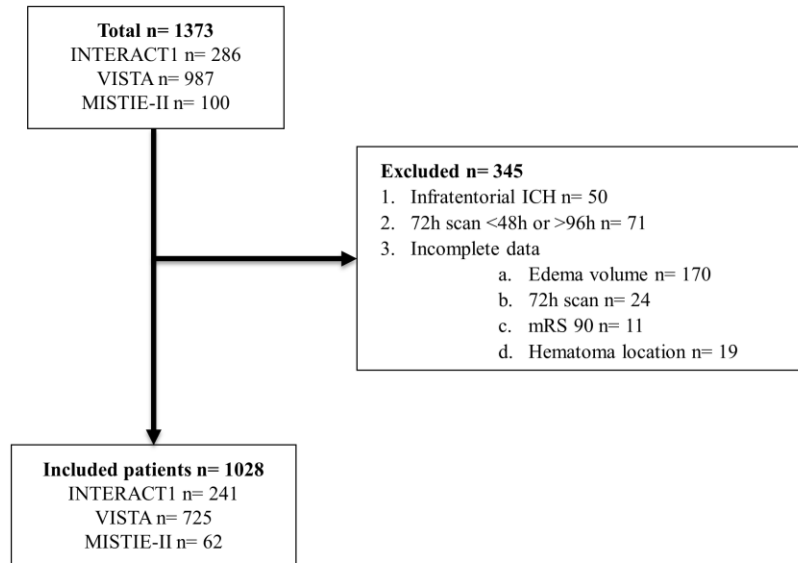
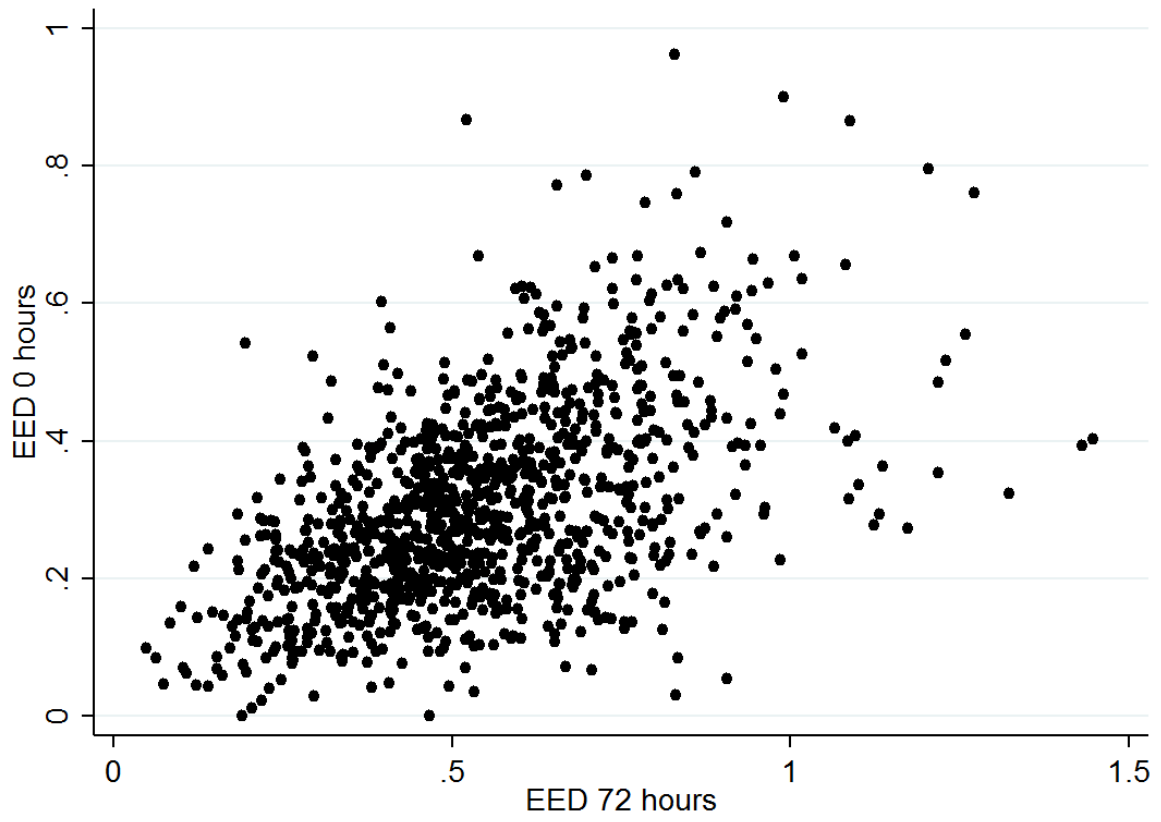


## Online Supplement

**Supplementary Figure I:** Flow diagram outlining patient exclusions.



**Supplementary Figure II:** scatterplot depicting the relationship between EED<sub>72</sub> and EED<sub>0</sub>. P= 0.53. *EED= oedema extension distance.*



**Supplementary Table I:** Results of testing for associations with mortality – Cox regression model. *EED*= oedema extension distance, *IVH*= intraventricular haemorrhage.

<b>Predictor variable</b>	<b>Hazard Ratio</b>	<b>Standard error</b>	<b>P value</b>	<b>Lower 95% CI</b>	<b>Higher 95% CI</b>
Age	1.04	0.01	<0.001	1.03	1.06
Male sex	1.72	0.36	0.009	1.14	2.60
Antiplatelet therapy	1.97	0.41	0.001	1.31	2.97
Presence of IVH at 72 hours	2.14	0.44	<0.001	1.43	3.20
EED <sub>72-0</sub>	2.21	1.02	0.085	0.90	5.47
Baseline haematoma volume	1.03	0.003	<0.001	1.02	1.03

**Supplementary Table II:** Sensitivity analysis of associations with mRS at 90d (ordinal regression model) in those without neurosurgical intervention. *EED*= oedema extension distance, *IVH*= intraventricular haemorrhage.

<b>Predictor variable</b>	<b>Odds Ratio</b>	<b>Standard error</b>	<b>P value</b>	<b>Lower 95% CI</b>	<b>Higher 95% CI</b>
Male sex	0.76	0.09	0.026	0.59	0.97
Age	1.05	0.006	<0.001	1.04	1.06
Diabetes	1.53	0.26	0.012	1.10	2.14
Antiplatelet therapy	1.61	0.30	0.011	1.11	2.32
Anticoagulation	2.30	0.82	0.019	1.15	4.63
Statin	0.68	0.14	0.065	0.45	1.02
Lobar haemorrhage	0.60	0.12	0.009	0.41	0.88
Haematoma volume 72 hours	1.05	0.004	<0.01	1.04	1.06
Presence of IVH at 72 hours	2.48	0.33	<0.001	1.91	3.22
EED <sub>72-0</sub>	1.95	0.69	0.060	0.97	3.92