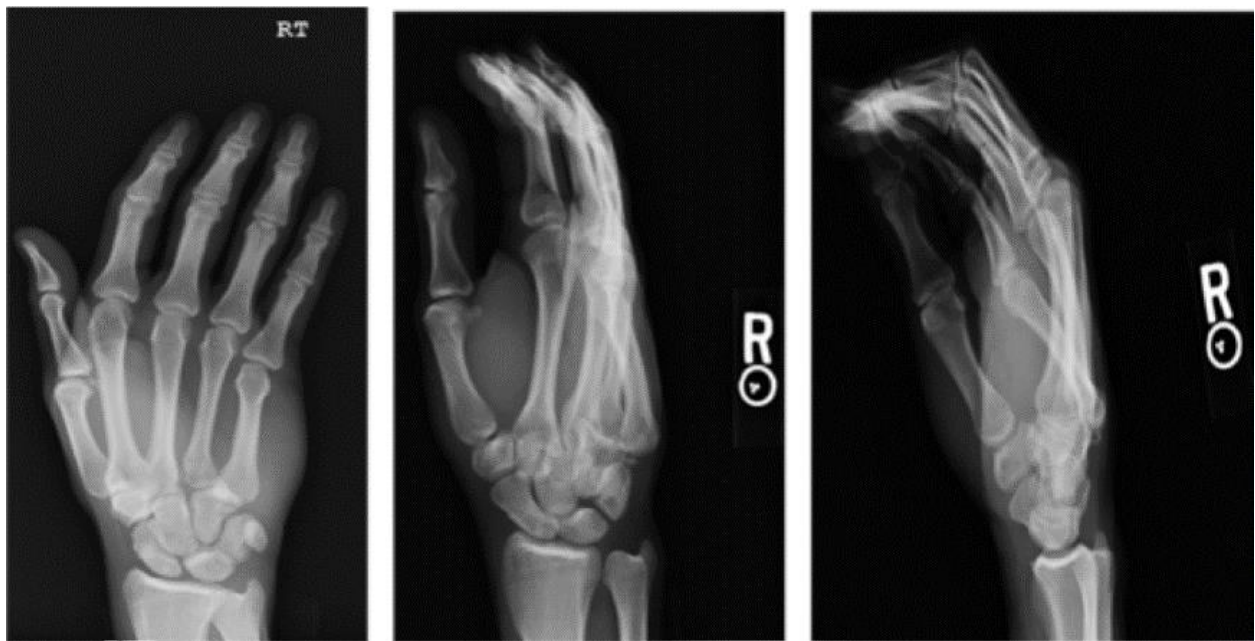


Supplemental Figures

AP, oblique and lateral radiographs showing the most common patterns of dislocation with percentage of injury



Supplemental Figure S1: 4th-5th CMC fracture dislocation (47%)



Supplemental Figure S2: 5th CMC fracture dislocation (27.7%)



Supplemental Figure S3: 2nd-5th CMC fracture dislocation (14.5%)