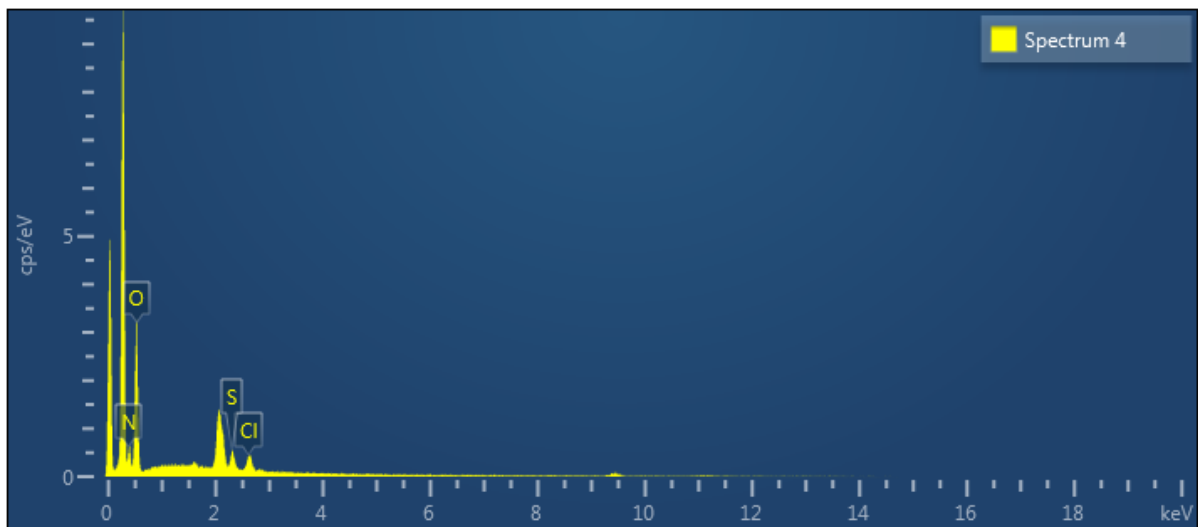
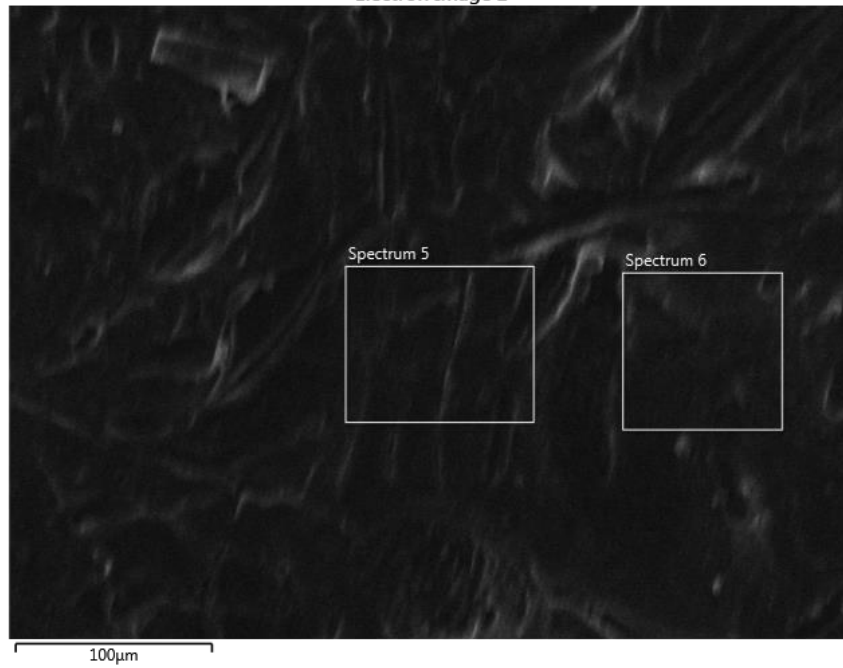


Appendix 1

Electron Image 2



Spectrum 4 Element	Line Type	Weight %	Weight % Sigma	Atomic %
C	K series	54.00	0.79	60.36
O	K series	30.72	0.57	25.78
N	K series	13.88	1.11	13.31
Cl	K series	0.73	0.04	0.28
S	K series	0.66	0.05	0.28
Total		100.00		100.00

Appendix 2

SEQ ID NO. 1: Hypothetical protein cypCar_00045321, partial [Cyprinus carpio]

1 MGFQGFQGHA GEPGEPGQAG AVGSRGPPGP PGKNGDDGNN GRPGKPGDRG
51 VPGAQGARGF PGTPLPLPMK GHRGYTGLDG RKGEFPAAGL KGENGAAGSN
101 GTFPQRGARG LPGERGRVGP SGPAGARGAD GNTGPAGPAG PLGAAGPPGF
151 PGAPGPKGEI GPAGPTGPPG PQGQRGEPGT NGAVGPVGGP GNPANGING
201 AKGAAGTPGV AGAPGFPGPR GGPQPQGPSG ASGPRGLAGD PGPVGVKQDA
251 GVKGEPGSSG PQGPPGPSGE EGKRGSTGEQ GPTGAVGLRG PRGMPPGARGA
301 TCTPGARGFP GDAGRAGEPG LVGARGLPFS PGSSGPPGKE GPFVGLPQDG
351 RSGPPGPTGP RQQPNIGFP GPKGASGEAG KPGEKGPSGP TGLRGLPGPD
401 GNNGPAGFVG LAGAPGEKGE QGPSGAPGFQ GLPGFAGFVG EAGKPGDRVS
451 IHGSDSTQLM QFLVHLHNTG CIVSCKSLQI FNISQQGIPG DQGVSGPAGV
501 KGERGNPGPA GASGAQGPFG ARGVAGTPGP DGNKGEFGAA GAAGAPGHQG
551 AAGMPGERGT AGTPGPKGEK GELGYRGLG NAGRDGARGA PGPSGPPGPA
601 GANGDKGETG SFGPPGPAGP RGSPGERGES GPAGPSGFAG PPGADGQTGQ
651 RGEKGPAGGK GDAGPPGPAG PVGNTGPLGA AGPAGPPGAR GDSGPPGLTG
701 FPAAGRVP GPAGIVGPP GLTGAPGKDG PRGARGDVGP AGPPGENGLI
751 GPPGLAGEKG SPGEAGPAGA PGSAGPQQQL GSQGFSGLPG SRGDRGLPGG
801 PGAVGEPGRV GPAGAPPRG PIGNIGMPGM TGPQGEAGRE GSPGNDGPPG
851 RPGAAGLKGD RGEPSGPGTA GPVGAPGPNP PSGAVGRPGN RGESEPSGSV
901 GPAGAVGARG APGPAGPRGE KGVAGDKGER GMKGLRGHPG LQGMPPGNH
951 SGDSGPAGIA GPAGPRGPAG PNGPPGKDG NGMPGAIGPP GHRGPPGHVG
1001 PSGPPGSPGL PGPAGPAGG YDTSGGYDEY RADQASLRK DYEVDATIKS
1051 LNTQIENLLS PEGSKKNPAR TCRDIRLSHP EWSSGFYWID PNQGCAMDAI
1101 KAYCDFSTGQ TCIHPHPESI PRKNWYRGSQ EKKHIWFGET INGGTEFGYN
1151 DETLSPQSMA TQLAFMRLLA NQAVQNITYH CKNSIAYMDA ENGNLKKAVL
1201 LQGSNDVELR AEGNSRFTFS VLEDGCS

SEQ ID NO. 2: Collagen type I alpha 2 [Carassius auratus]

1 MLSFVDTRIL LLLAVTSYLA SCQSGLRGPK GPRGERGPKG PDGKPGRPGH
51 PGFPPGPPGPP GLGGNFAAQY DGAKGPEPGP GPIGLMGPRG PSGPPGAPGP
101 QGFQGHAGEP GEPGQAGAVG SRGPPGPPGK NGDDGNNGRP GKPGDRGVPG
151 AQQARGFPPT PGLPGMKGHR GYTGLDGRKG ELGAAGLKGE NGAAGANGTP
201 GQRGARGLPG ERGRVGPSGP AGARGADGNT GPAGPAGPLG AAGPPGFPGA
251 PGPKGEIGAA GPTGPSGPQG QRGEPTNGA VGPAGPPGNP GANGINGAKG
301 AAGTPGVAGA PGFPGPRGGP GPQGPSGASG PRGLAGDPGP VGVKGDGSGVK
351 GEPGSSGPQG PPGPSGEEGK RGSTGEQGAT GPAGLRGPRG AAGTRGLPGM
401 AGRSGPMGMP GARGATGSPG ARGPPGDAGR AGEPLTGAR GLPGSPGSSG
451 PPGKEGVPVP SGQDGRSGPP GPTGPRGQPG NIGFPGPKGA TGEAGKPGEK
501 GPAGPTGLRG LPGPDGNGP AGPVGLAGAP GEKGEQGPSG APGFQGLPGP
551 AGFVGEAGKP GDRGIPGEQG ASGPAGVKGE RGGPGPAGAA GAQGPIGARG
601 PAGTPGPDGN KGEPGAAGAA GGPGHQGAAG MPGERGTAGT PGPKGEKGEQ
651 GYRGLEGNAG RDGARGAPGP SGPPGPAGAN GDKGETGSFG PPGPAGQRGT
701 PGERGESGPA GPSGFAGPPG ADGQTGQRGE KGPAGGKGDV GPPGPAGPAG
751 NTGPLGAAGP AGPPGARGDS GPPGLTGFPG AAGRVGPPGP AGIVGPSGPT
801 GAPGKDGPRG ARGDVGPAGP PGENGLIGPP GLAGEKGSFG EPGPQAGPFS
851 AGFQQQLGSQ GFNGLPGSRG DRGLPGGPGA VGEPRVGPA GAPGPRGPIG
901 NIGMPGMTGP QGEAGREGSP GNDGPPGRPG AAGLKGDRGE PGSAGPSGPA
951 GAPGPNGPSG AAGRPNRGE SGPSGSAGPA GAAGARGAPG PAGPRGEKGV
1001 AGDKGERGMK GLRGHPGLQG MPGPNGPSGD SGPAGIAGPA GPRGPAGPNG
1051 PPGKDGNSGM PGAIGPPGQR GPPGYVGPSG PPGSPGLPGP AGPAGGGYDT
1101 SGGYDEYRAD QGSLRAKDYE VDATIKSLNT QIENLLSPEG SKKNPARTCR
1151 DIRLSHPEWS SGFYWIDPNQ GCTMDAIKAY CDFSTGQTCI HPHPESIPRK
1201 NWRGSGQEKK HIWFGETING GTEFGYNDET LSPQSMATQL AFMRLLANQA

1251 VQNITYHCKN SIAYMDAENG NLKKAVLLQG SNDVELRAEG NSRFTFSVLE
1301 DGCSRHTGQW SKTVIEYRTN KPSRLPILDI APLDIGGADQ EFGLDIGPVC
1351 FK

SEQ ID NO. 3: Collagen type I alpha 1 [Ctenopharyngodon idella]

1 MFSFVDIRLA LLLSATVLLA RQGEDDRTG GSCTLDGQVY NDRDVWKPEP
51 CQICVCDSGT VMCDEVICED TTDCPNPVIP HDECCPVCPD DDFQEPSVEG
101 PRGTPGEKGD RGPAGPPGND GIPGQPGLPG PPGPPGPPGL GGNFSPQMSG
151 GFDEKSGGAM AVPGPMGPMG PRGPPGPPGT PGPQGFTGPP GEPGEAGAPG
201 PMGPRGAAGP PGKNGEDGES GKPRPGERG PPGPQGARGF PGTPLPLGIK
251 GHRFGSGLDG AKGDTGPSGP KGEAGAPGEN GTPGAMGPRG LPGERGRAGP
301 PGAAGARGND GAAGAAGPPG PTGPAGPPGF PGGPGAKGEV GFQGARGAEG
351 PQGARGEAGN PGPAGPAGPA GNNGADGAAG PKGSPGTPGI AGAPGFPGPR
401 GPPGPSGAAG APGPKGNTGE VGAPGAKGEA GAKGEAGAQG VQGPPGPPGE
451 EGKRGARGEPE GAAGGRGPPG ERGAPGARGF PGADGSAGPK GAPGERGGPG
501 VVGPKGATGE PGRNGEPGMP GSKGMTGSPG SPGPDGKTGP SGTTPGQDRP
551 GPPGPVGARG QPGVMGFPGP KGAAGEAGKP GERGVMAVG ATGAPGKDGD
601 VGAPGAPGPA GPAGERGEQG PAGPPGFQGL PGPQGATGEP GKSQEQQVPG
651 EAGAPGPAGS RGDGRFPGER GAPGPAGPAG ARGSPGSAGN DGAKGDAGAP
701 GAPGAQGPPG LQMPGERGA AGLPGLKGRD GDQAKGTDG APGKDGIRGM
751 TGFIGPPGPA GAPGDKGETG APGLVGPTGA RGPPGERGET GAPGPAGFAG
801 PPGADGLPGA KGEAGDNGAK GDAGSPGPAG ATGAPGPQGP VGATGPKGAR
851 GAAGPPGATG FPGAAGRVGP PGPAGNAGPP GPPGPGGKEG QKGNRGETGP
901 AGRTGEVGAP GPPGAPGEKG TPGAEGPTGP AGIPGPQGIA GQRGIVGLPG
951 QRGERGFPL PGPSGEPGKQ GPSGPSGERG PPGPMGPPGL AGPPGEPGRE
1001 GTPGNEGSAG RDGAPGPKGD RGETGAAGTP GAPGPPGAPG FVGPAGKTGD
1051 RGESGPAGPA GAAGPAGPRG PAGPAGARGD KGETGEAGER GMKGHRGFTG

1101 MQGPPGPPGP SGEPPGAGAS GPAGPRGPAG SSGPAGKDG M SGLPGPIGPP
 1151 GPRGRNGEIG PAGPPGAPGP PGPPGPSGGG FDIGFIAQPQ EKAPDPFRHF
 1201 RADDANVMRD RDLEVDTTLK SLSQQIESIM SPDGTKKNPA RTCRDLKMCH
 1251 PDWKSGEYWI DPDQGCNQDA IKVYCNMETG ETCVYPTST IPKKNWYTSK
 1301 NIKKHKHWF GEAMTDGFQF EYGSEGSKAE DVNIQLTFLR LMSTEASQNI
 1351 TYHCKNSIAY MDQASGNLKK ALLLQGSNEI EIRAEGNSRF TYSVTEDGCT
 1401 SHTGAWGKTV IDYKTTKTSR LPIIDIAPMD VGAPNQEFGI EVGPVCF L

SEQ ID NO. 4: collagen alpha-1(I) chain isoform X1 [Pygocentrus nattereri]

1 MFSFVDIRLA LLLSATVLLA RQGEDDRTG SSCTLDGQVY NDRDVWKPEP
 51 CQICVCDSGT VMCDEVICED TSDCANPIIP PDECCPICPD DEYQEPRVEG
 101 PKGMPGEKGD RGPAGPPGND GIPGQPGLPG PPGPPGPPGL GGNFSPQMSG
 151 GFDEKSGGMP IPGPMGPMGP RGPPGPAGIP GPQGFTGPPG EPGEAGAPGP
 201 MGPRGAAGPP GKNGEDGESG KPGRPGERGP PGPQGARGFP GTPGLPGIKG
 251 HRGFSGLDGA KDG GGPAGPK GEPGAAGENG TPGAMGPRGL PGERGRAGPP
 301 GAAGARGNDG AAGAAGPPGP TGPAGPPGFP GGP GAKGEVG AQGTRGAE GP
 351 QGARGE PGNP GPAGPAGPAG NNGADGAPGL KGAPGASGIA GAPGFP GPRG
 401 PPGAAGTPGA PGPKNTGEA GAPGAKGEAG VKGESGAPGV QGPPGPPGEE
 451 GKRGARGE PG AAGVRGPAGE RGAPGARGFP GADGAAGPRG APGERGGPGV
 501 VGAKGATGEP GRNGEPGMPG SKGMTGSPGS PPGDGKTGPA GAPGQDGRPG
 551 PPGPGGARGQ PGVMGFPGPK GAAGEAGKPG ERGVMGAIGV PGAPGKGDV
 601 GAPGAPGPAG PSGERGEQGP AGPPGFQGLP GPQATGEPG KSQE QGVPE
 651 AGAPGVAGSR GDRGFPGERG APGAAGPAGP RGS PGAAGND GAKGETGAAG
 701 APGAQGP PGL QGMPGERGAA GLPGLKDRG DQGAKGADGA AGKDGIRGMT
 751 GPIGPPGPAG AQGDKEPGA GGPVGTGAR GPPGERGETG APGPAGFAGP
 801 PGADGQP GAK GEPGDTGAKG DAGAPGAAGA TGAPGPQGPV GATGPKGARG
 851 AAGPPGATGF PGAAGRVGPP GPAGNSGPPG PPGPSGKEGP KGNRGETGSP

901 GRPGEIGAAG PPGPSGEKGT PGAEGAPGPS GIPGFQGIAG QRGIVGLPGQ
 951 RGERGFPLP GSSGEPKQKQ PGGPSGERGP PGPMGPPGLA GPPGEPGREG
 1001 TPGNEGAAGR DGAVGPKGDR GETGASGAPG APGPPGAPGP IGPAGKTGDR
 1051 GEAGPAGPAG ASGPAGPRGP AGPAGARGDK GETGEAGERG MKGHRGFTGM
 1101 QGFPPGPPGPS GESGPAGASG PAGPRGPAGS AGSPGKDGIS GLPGPIGPPG
 1151 PRGRTGEIGP AGPPGPPGPP GPPGPSGGGF DIGFIAQPQE KAPDPFRHFR
 1201 ADDANVMRDR DLEVDTTLKS LSQQIESIRS PDGTKKNPAR TCRDLKMCHP
 1251 DWKSGEYWID PDQGCNQDAI KVNCNMETGE TCVYPAQAEI PKNWYTSKN
 1301 IKEKKHVWFG EAMTDGFQFE YGGEESKAED VNIQLTFLRL MSTEQSNIT
 1351 YHCKNSIAYM DQATGNLKA LLLQGSNEIE IRAEGNSRFT YSVTEDGCTS
 1401 HTGAWGKTVI DYKTTKTSRL PIIDIAPMDV GAPNQEFQIE VGPVCFLL

SEQ ID NO. 5: hypothetical protein cypCar_00006571 [Cyprinus carpio]

1 MFSFVDIRLA LLLSATVLLA RGQGEDDRTG GSCTLDGQVY NDRDVWKPEP
 51 CQICVCDSTG VMCDEVICED TAHCSNPVIP HDECCPVCPCD DEFKEPGVEG
 101 PRGPAGEKGD RGLPGPPGND GIPGQPLPG PPGPPGPPGL GGNFSPQMSG
 151 GYDEKSGGAM AVPGPMGPMG PRGPPGPPGS SGPQGFTGPP GEPGEAGAPG
 201 PMGPRGAAGP PGKNGEDGES GKPRPGERG PPGAQGARGF PGTPGLPGIK
 251 GHRGFSGLDG AKGDTGPAGP KGEPPAPGEN GTPGAMGPRG LPGERGRAGP
 301 PGAAGARGND GAAGAAGPPG PTGPAGPSGF PGGPGAQGEV GAQGARGAEG
 351 PQGARGEFGN PGPAGAAGPA GNNGADGAPG LKGAPGAPGI AGAPGFPGPR
 401 GPSGPAGAAG APGPKGNTGE VGAPGAKGEA GAKGEAGAQQ VQGPFGPSGE
 451 EGKRGPRGEP GSAGARGPPG ERGAPGARGF PGADGSAGPK GATGERGGPG
 501 IVGPKGATGE PGRNGEPGMP GSKGMTGSPG SPGPDGKTGA TGTPGQDGRP
 551 GPPGPVVGARG QPGVMGFPPG KGAAGEAGKP GERGVMGALG ATGAPGKDGD
 601 VGAPGAPGPA GPTGERGEQG PAGPPGFQGL PGPQGATGEP GKSQEQQVPG
 651 EAGAPGPAGS RGDRTGPPGER GAPGPAGPAG ARGSPGSAGN DGAKGDAGAP

701 GAPGAQGPPG LQMPGERGA AGLPGLKGDR QMNRMAQILK TDNKFLSKGD
751 QGAKGTDGAP GKDGIKGMTG PIGPPGPAGA PGDKGETGAP GLVGPNGARG
801 PPGERGETGA PGPAGFAGPP GADGLPGAKG EPGDNGAKGD SGPPGPAGAT
851 GAPGPQGFVG STGPKGARGA AGPPGATGFP GAAGRVPVPPG PAGNAGPPGP
901 SGAPGKEGQK GNRGETGPSG RTGEIGAAGP PGAPGEKGTG GAEGPPGSAG
951 IPGPQGIAGQ RGIVGLPGQR GERGFPLPG QSKVGILCIN HGKAFIILFI
1001 MPFRESLANK DLLVPLVNVD LLDPWDPLDW LDLLVSLVVR ELQVMRVLDD
1051 VMVLLDQRVT VVRLALLALP VLLDLLVLLD PLALLERLVI VESLALLVLP
1101 VLLALLVPVD PLCNVFIQGP AGARGDRGET GEAGERGMKG HRGFTGMQGP
1151 PGPPGPSGEP GPAGASGPAG PRGPGGSSGA AGKDGMSGLP GFIGPPGPRG
1201 RNGEIGPAGP PGPPGLPGPP GPSGGGFDIG FIAQFVEKAP DFFRSYRADD
1251 ANVMRDRDLE VDTTLKSLSQ QIESIISPDG TKKNPARTCR DLKMCHPDWK
1301 SGHEYWIDPDQ GCNQDAIKVY CNMETGETCV YPAESSIPKK NWYTSKNIKE
1351 KKHVWFGEAM TDGFQSHSTA WGKTVIDYKT TKTSRLPIID IAPMDVGAPN
1401 QEFGIEVGPV CFL

Appendix 3

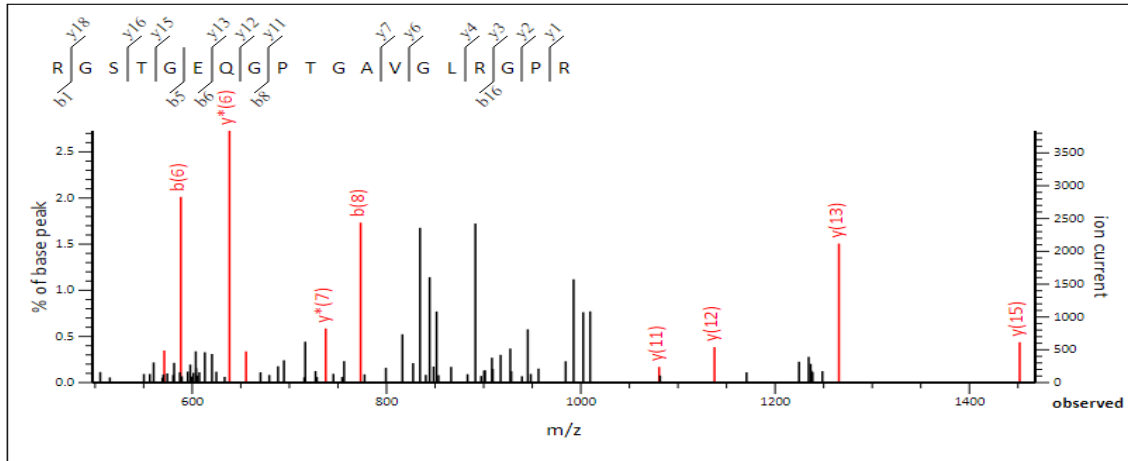
MS/MS fragmentation of identified typical peptide fragments in collagen (SEQ ID NO. 1)

MS/MS Fragmentation of RGSTGEQGPTGAVGLRGR

Found in **KTF73577.1** in **NCBIprot**, hypothetical protein cypCar_00045321, partial [Cyprinus carpio]

Match to Query 306: 1851.984372 from(618.335400,3+) intensity(248870.0000) index(58)

Data file 2019-0116_SampleC.pkl

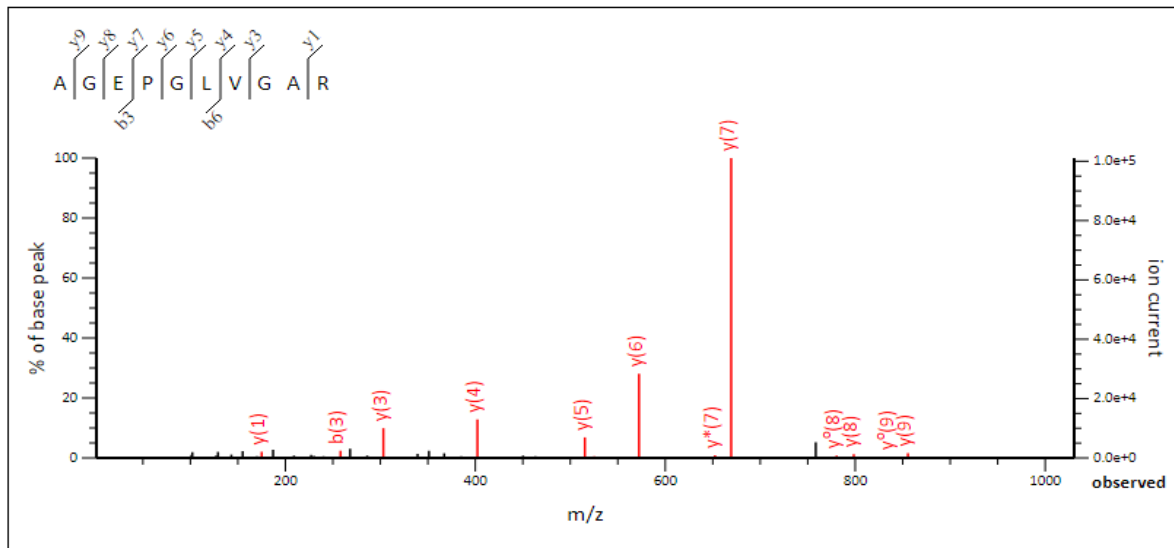


MS/MS Fragmentation of AGEPLVGAR

Found in **KTF73577.1** in **NCBIprot**, hypothetical protein cypCar_00045321, partial [Cyprinus carpio]

Match to Query 62: 925.501448 from(463.758000,2+) intensity(825753.9000) index(70)

Data file 2019-0116_SampleC.pkl

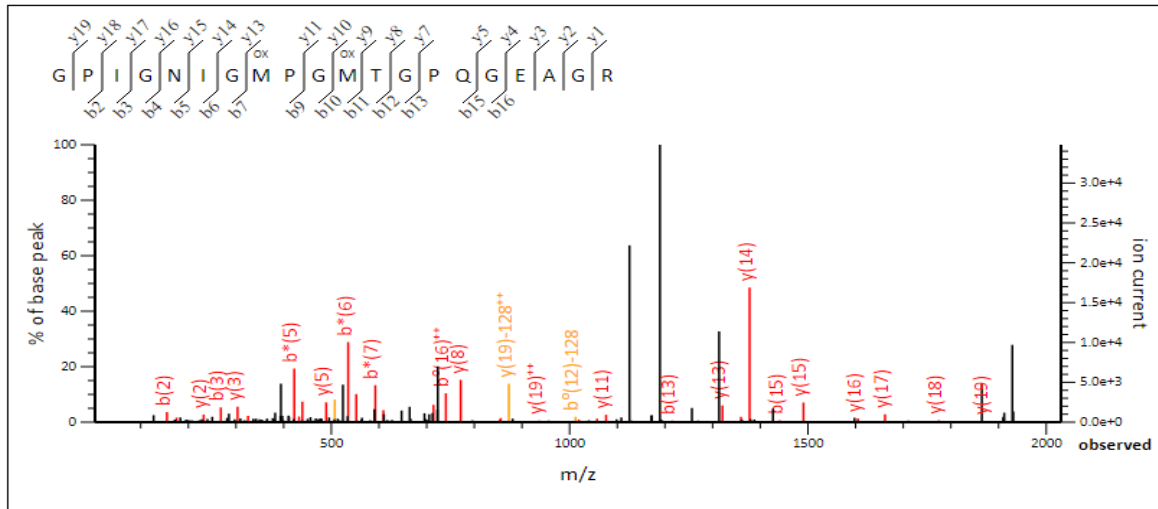


MS/MS Fragmentation of **GPIGNIGMPGMTGPQGEAGR**

Found in **KTF73577.1** in **NCBIprot**, hypothetical protein cypCar_00045321, partial [Cyprinus carpio]

Match to Query 326: 1927.891848 from(964.953200,2+) intensity(606425.1000) index(128)

Data file 2019-0116_SampleC.pkl

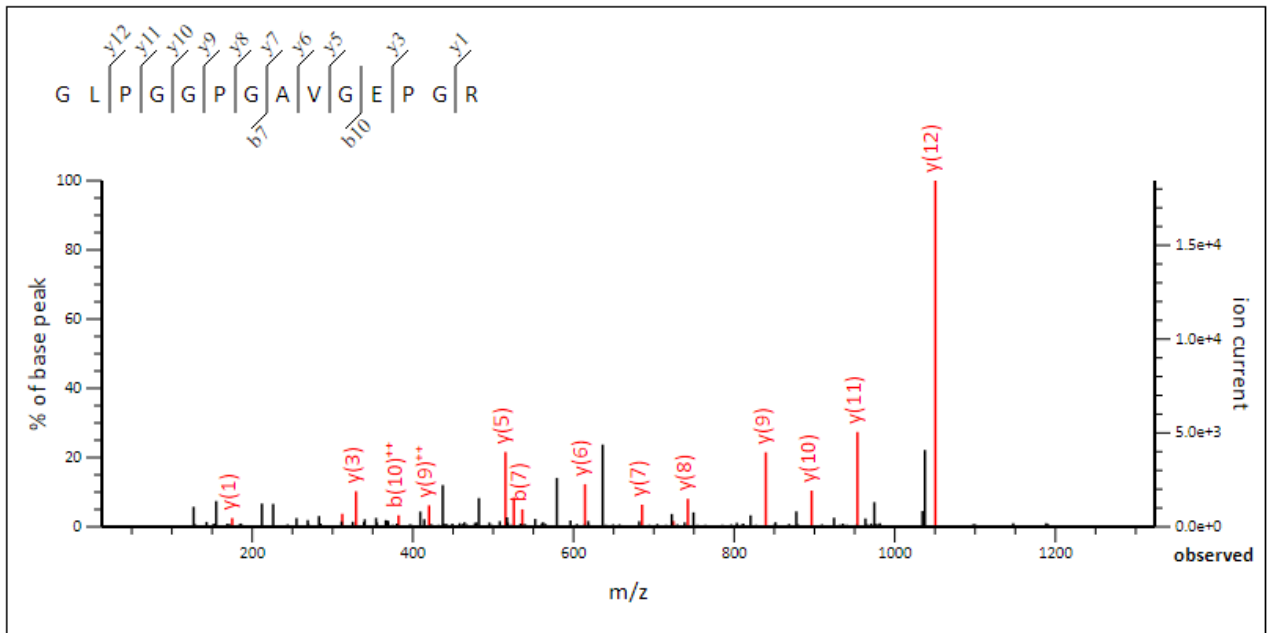


MS/MS Fragmentation of **GLPGGPGAVGEPGR**

Found in **KTF73577.1** in **NCBIprot**, hypothetical protein cypCar_00045321, partial [Cyprinus carpio]

Match to Query 139: 1219.636648 from(610.825600,2+) intensity(259267.2000) index(293)

Data file 2019-0116_SampleC.pkl



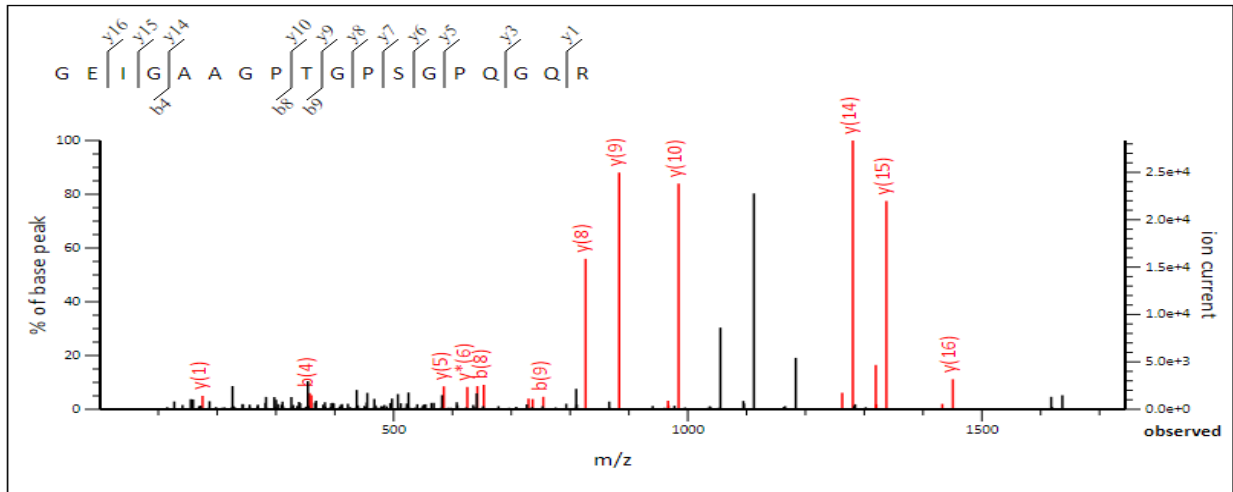
MS/MS fragmentation of identified typical peptide fragments in collagen (SEQ ID NO. 2)

MS/MS Fragmentation of **GEIGAAGPTGSPGPGQQR**

Found in **BAG72201.1** in **NCBIprot**, collagen type I alpha 2 [Carassius auratus]

Match to Query 268: 1635.795648 from(818.905100,2+) intensity(637146.9000) index(263)

Data file 2019-0116_SampleC.pkl

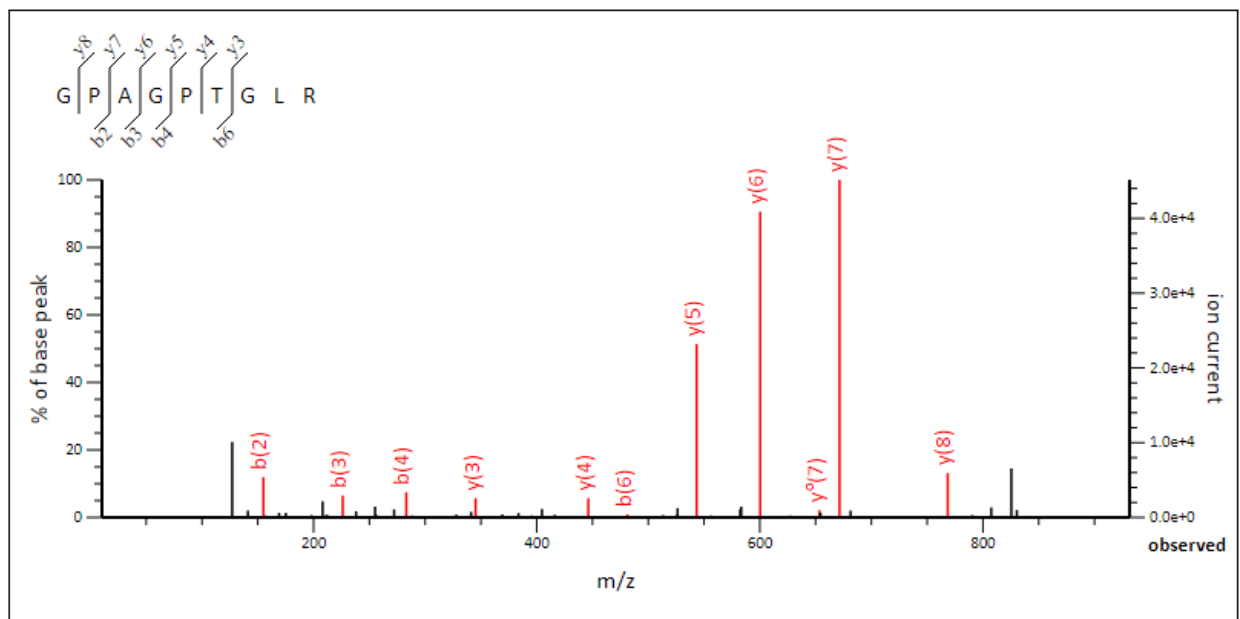


MS/MS Fragmentation of **GPAGPTGLR**

Found in **BAG72201.1** in **NCBIprot**, collagen type I alpha 2 [Carassius auratus]

Match to Query 41: 824.456248 from(413.235400,2+) intensity(722029.5000) index(50)

Data file 2019-0116_SampleC.pkl

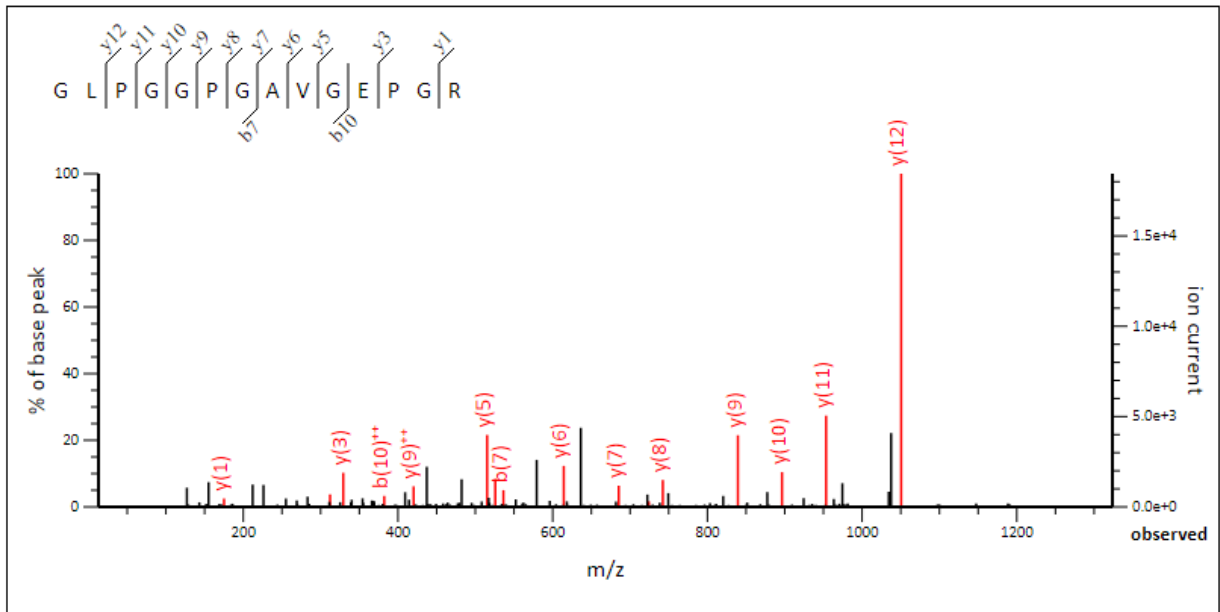


MS/MS Fragmentation of **GLPGGPGAVGEPGR**

Found in **BAG72201.1** in **NCBIprot**, collagen type I alpha 2 [Carassius auratus]

Match to Query 139: 1219.636648 from(610.825600,2+) intensity(259267.2000) index(293)

Data file 2019-0116_SampleC.pkl

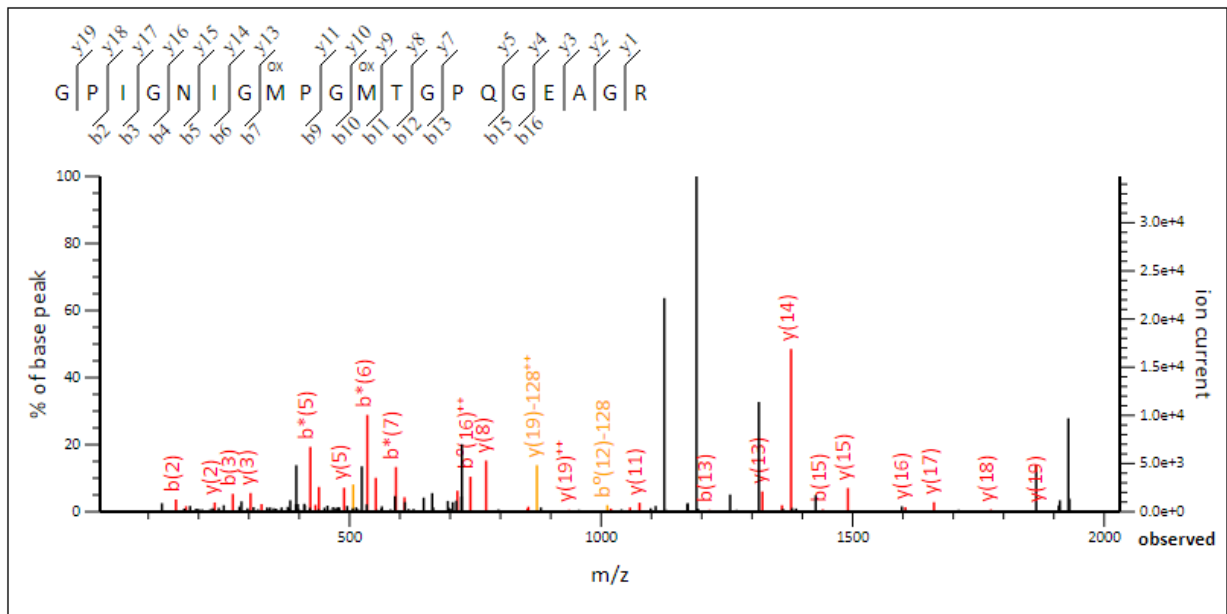


MS/MS Fragmentation of **GPIGNIGMPGMTGPQGEAGR**

Found in **BAG72201.1** in **NCBIprot**, collagen type I alpha 2 [Carassius auratus]

Match to Query 326: 1927.891848 from(964.953200,2+) intensity(606425.1000) index(128)

Data file 2019-0116_SampleC.pkl



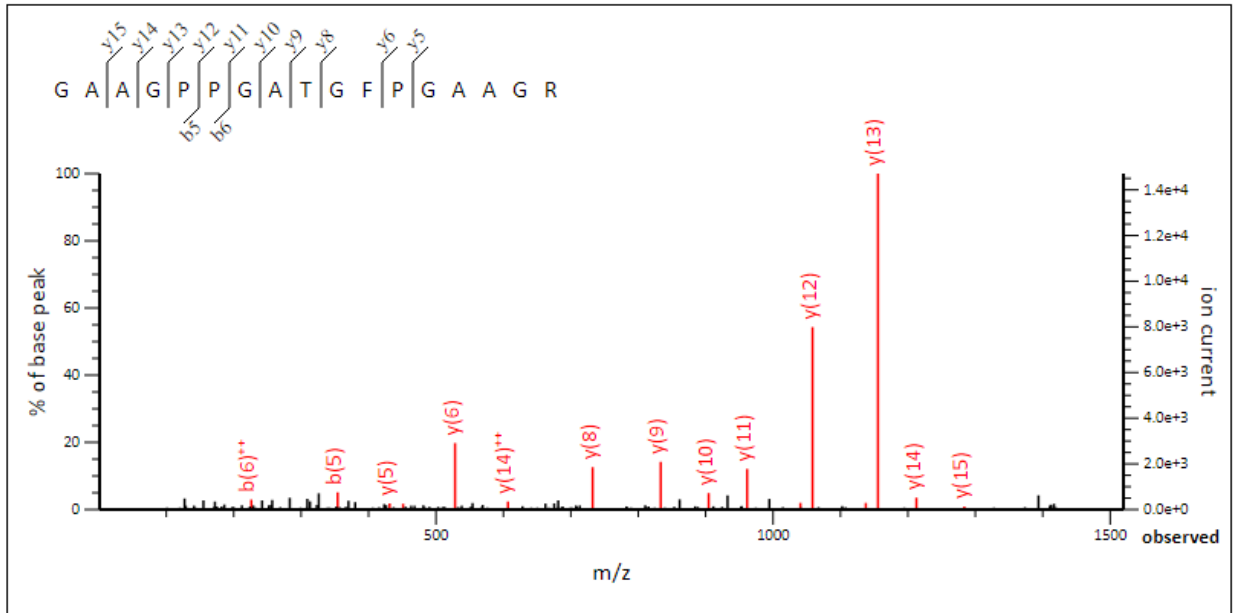
MS/MS fragmentation of identified typical peptide fragments in collagen (SEQ ID NO. 3)

MS/MS Fragmentation of **GAAGPPGATGFPGAAGR**

Found in **ADK35755.1** in **NCBIprot**, collagen type I alpha 1 [Ctenopharyngodon idella]

Match to Query 191: 1410.702048 from(706.358300,2+) intensity(299005.0000) index(471)

Data file 2019-0116_SampleC.pkl

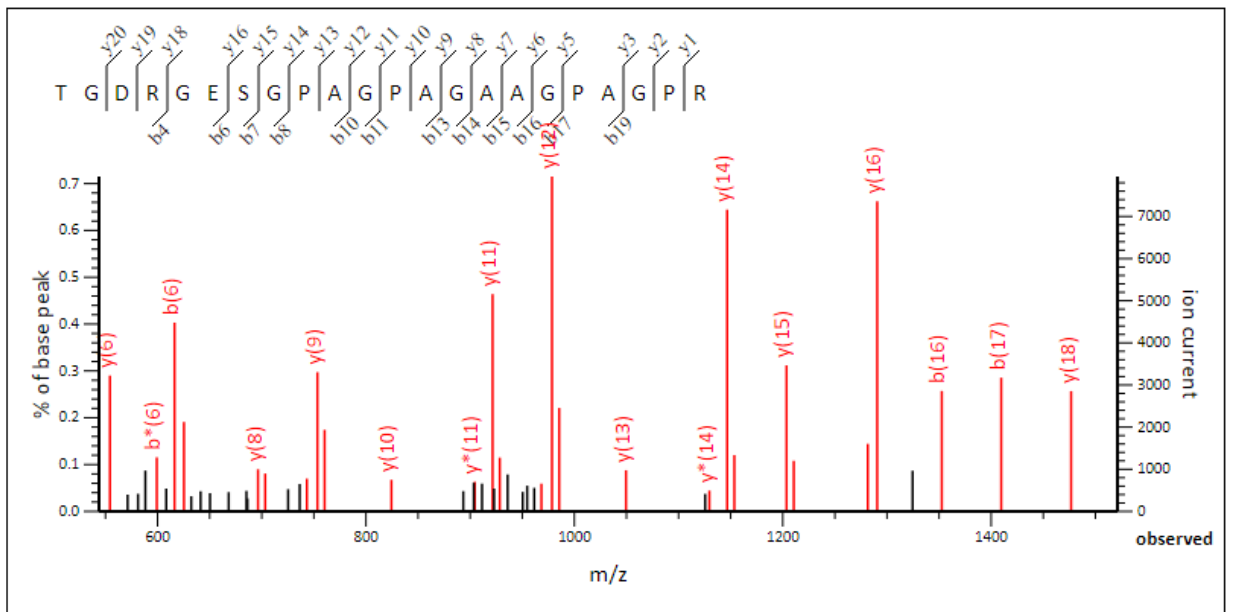


MS/MS Fragmentation of **TGDRGESGPAGAAGPAGR**

Found in **ADK35755.1** in **NCBIprot**, collagen type I alpha 1 [Ctenopharyngodon idella]

Match to Query 314: 1904.912248 from(953.463400,2+) intensity(3066728.2000) index(244)

Data file 2019-0116_SampleC.pkl

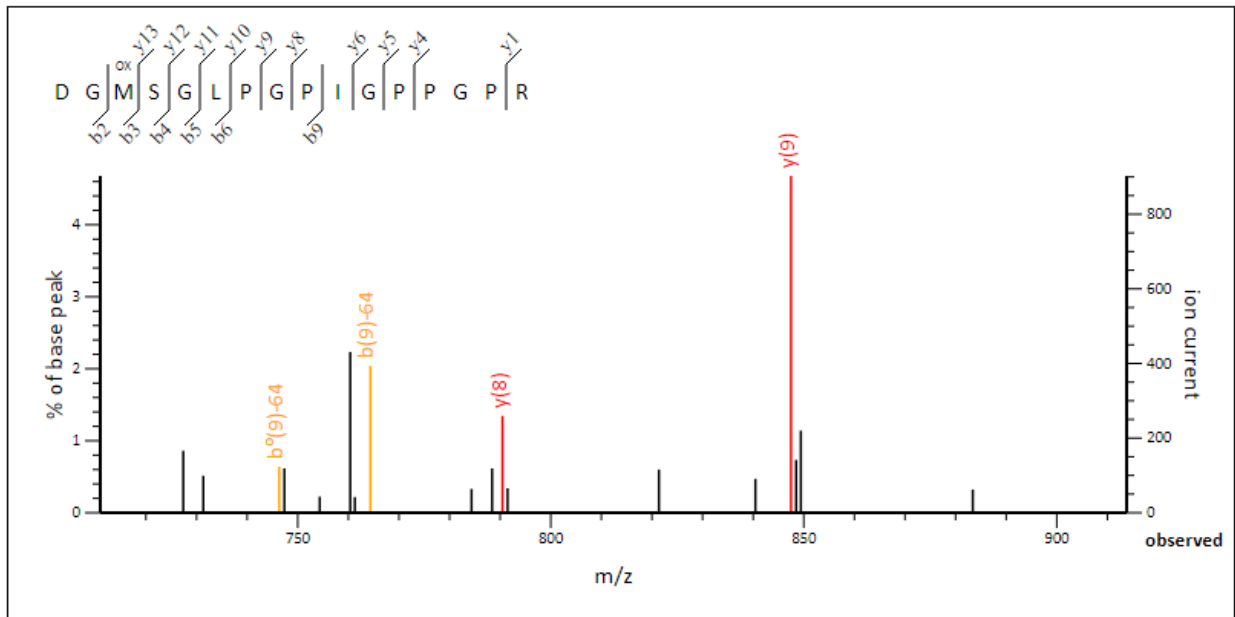


MS/MS Fragmentation of **DGMSGLPGIGPPGPR**

Found in **ADK35755.1** in **NCBIprot**, collagen type I alpha 1 [Ctenopharyngodon idella]

Match to Query 216: 1519.760448 from(760.887500,2+) intensity(65480.4000) index(336)

Data file 2019-0116_SampleC.pkl



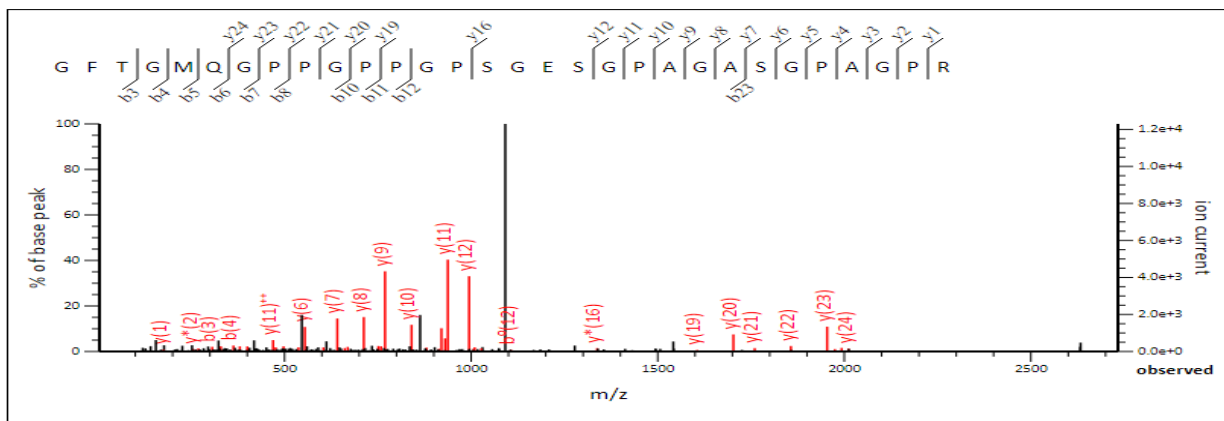
MS/MS fragmentation of identified typical peptide fragments in collagen (SEQ ID NO. 4)

MS/MS Fragmentation of **GFTGMQPPGPPGPPSGESGPAGASGPAGPR**

Found in **XP_017540674.1** in **NCBIprot**, PREDICTED: collagen alpha-1(I) chain isoform X1 [Pygocentrus nattereri]

Match to Query 448: 2631.228372 from(878.083400,3+) intensity(401541.0000) index(124)

Data file 2019-0116_SampleC.pkl

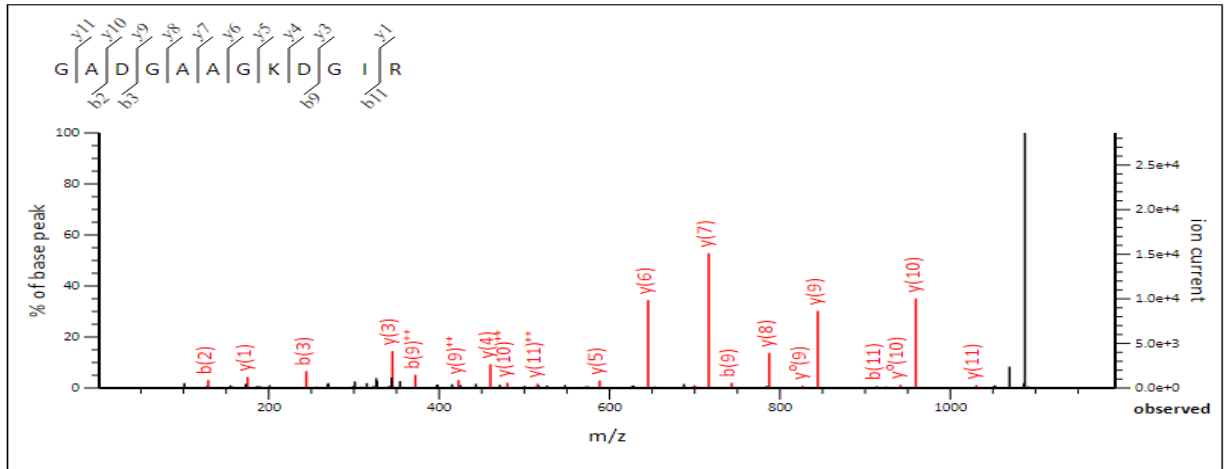


MS/MS Fragmentation of **GADGAAGKDGIR**

Found in **XP_017540674.1** in **NCBIprot**, PREDICTED: collagen alpha-1(I) chain isoform X1 [Pygocentrus nattereri]

Match to Query 97: 1086.552848 from(544.283700,2+) intensity(900638.9000) index(14)

Data file 2019-0116_SampleC.pkl

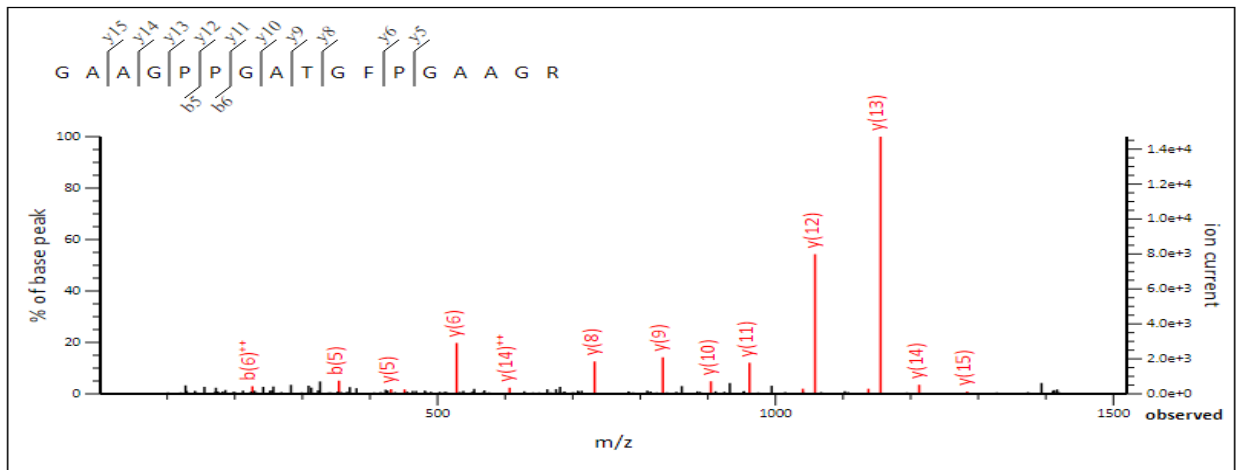


MS/MS Fragmentation of **GAAGPPGATGFPGAAGR**

Found in **XP_017540674.1** in **NCBIprot**, PREDICTED: collagen alpha-1(I) chain isoform X1 [Pygocentrus nattereri]

Match to Query 191: 1410.702048 from(706.358300,2+) intensity(299005.0000) index(471)

Data file 2019-0116_SampleC.pkl



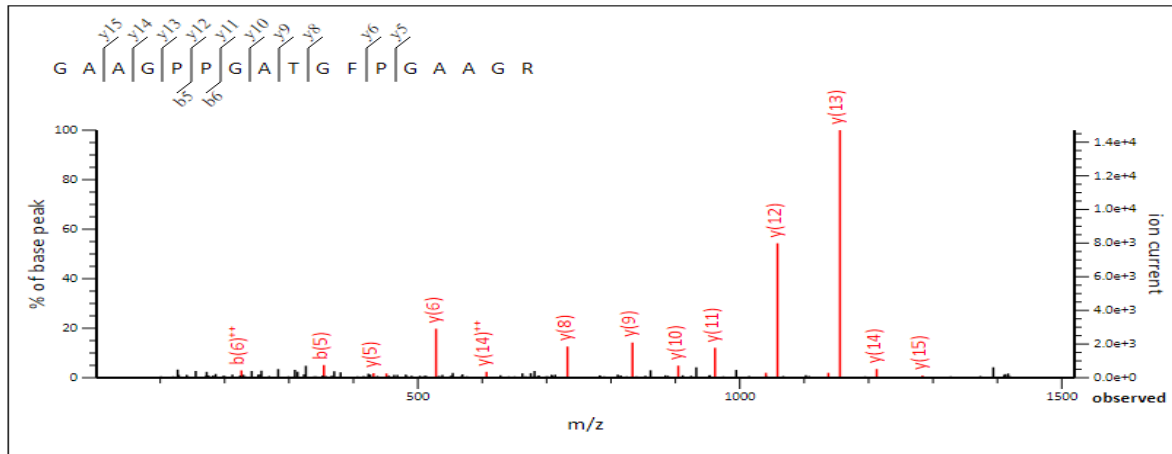
MS/MS fragmentation of identified typical peptide fragments in collagen (SEQ ID NO. 5)

MS/MS Fragmentation of **GAAGPPGATGFPGAAGR**

Found in **KTG43775.1** in **NCBIprot**, hypothetical protein cypCar_00006571 [Cyprinus carpio]

Match to Query 191: 1410.702048 from(706.358300,2+) intensity(299005.0000) index(471)

Data file 2019-0116_SampleC.pkl

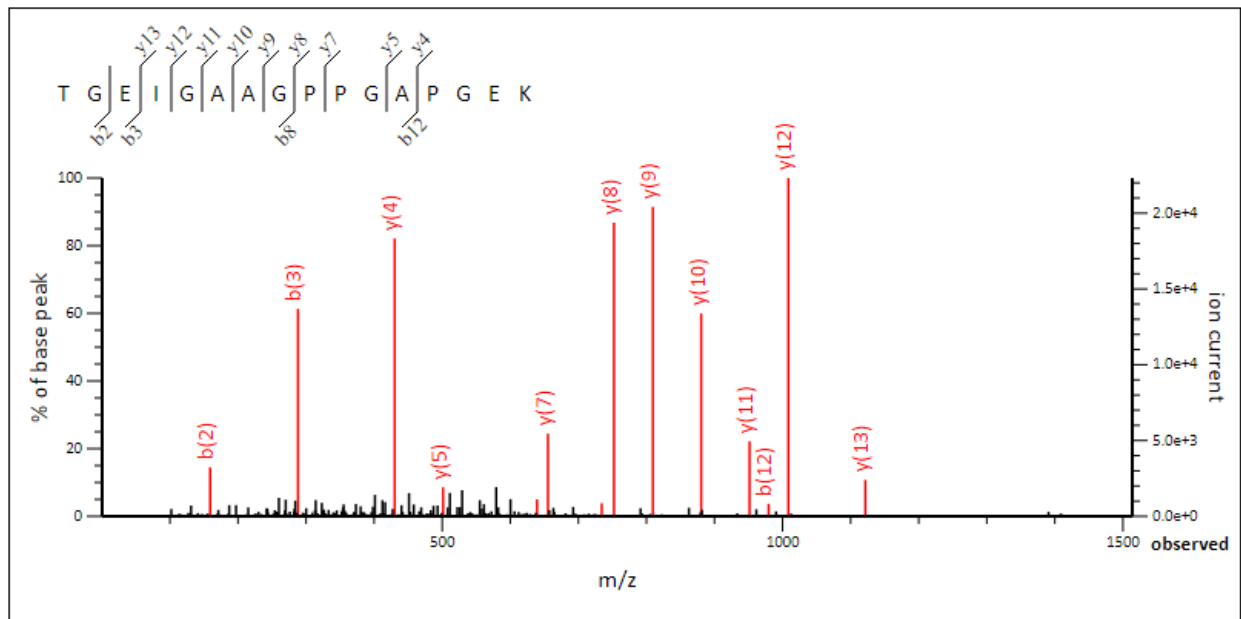


MS/MS Fragmentation of **TGEIGAAGPPGAPGKEK**

Found in **KTG43775.1** in **NCBIprot**, hypothetical protein cypCar_00006571 [Cyprinus carpio]

Match to Query 190: 1407.704848 from(704.859700,2+) intensity(1057856.9000) index(71)

Data file 2019-0116_SampleC.pkl



MS/MS Fragmentation of **DGMSGLPGIPPPGPR**

Found in **KTG43775.1** in **NCBIprot**, hypothetical protein cypCar_00006571 [Cyprinus carpio]

Match to Query 216: 1519.760448 from(760.887500,2+) intensity(65480.4000) index(336)

Data file 2019-0116_SampleC.pkl

