

**Supplementary Materials for  
“Time-to-event analysis when the event is defined on a finite  
time interval”**

Catherine Lee  
Division of Research,  
Kaiser Permanente, Oakland, California, U.S.A.  
*catherine.lee@kp.org*

Stephanie J. Lee  
Clinical Research Division,  
Fred Hutchinson Cancer Research Center, Seattle, WA

Sebastien Haneuse  
Department of Biostatistics,  
Harvard T. H. Chan School of Public Health, Boston, Massachusetts, U.S.A.

# Introduction

We present additional results that are beyond what could be presented in the main manuscript. This document is organized as follows:

**Appendix A:** Description of the CIBMTR HCT data referenced in Section 2 of the main manuscript

**Appendix B:** Components of marginal log-likelihood function referenced in Section 4.2 of the main manuscript

**Appendix C:** Expression for joint density of  $(T_1, T_2)$  referenced in Section 3.4 of the main manuscript

**Appendix D:** Equivalence between standard transition probability expressions from the multi-state model literature and absolute risk profile contributions calculated via integration over the joint density, referenced in Section 3.5 of the main manuscript

**Appendix E:** Simulation results corresponding to the ‘baseline’ scenario enumerated in Section 5.1 and additional data scenarios described in Section 5.2 of the main manuscript

**E.1** baseline scenario

**E.2** reducing sample size from  $n=5,000$  to  $n=1,000$

**E.3** administrative censoring via a censoring variable simulated from an Exponential distribution with mean 100

**E.4** administrative censoring solely of the terminal event at 365 days

**E.5** increasing the non-susceptibility fraction from 46% to 76%

**E.6** modification of  $\alpha_{23}$  and  $\kappa_{23}$  so that the hazard functions for the truncated and standard Weibull distributions are comparable on the interval  $(0, \tau)$

**E.7** baseline scenario without frailty term, i.e. Gamma frailty variance equal to zero

**Appendix F:** Additional results from the analysis of stem cell transplantation data in Section 6 of the main manuscript

**Appendix G:** Details regarding the included R code

## A Description of CIBMTR HCT data

Table A.1: Description of baseline characteristics of study population comprised of patients who underwent first HCT between 1999-2011 and distribution of observed outcomes (acute GVHD and/or death) by the end of 365 days post-transplantation.

|                   | <i>N</i> | %    | Observed outcome category, % |                                 |                          |                   |
|-------------------|----------|------|------------------------------|---------------------------------|--------------------------|-------------------|
|                   |          |      | Both acute GVHD & death      | Acute GVHD & censored for death | Death without acute GVHD | Censored for both |
| Total subjects    | 9651     |      | 11.0                         | 6.7                             | 28.7                     | 53.7              |
| Gender            |          |      |                              |                                 |                          |                   |
| Male              | 5366     | 55.6 | 11.7                         | 6.9                             | 28.3                     | 53.1              |
| Female            | 4285     | 44.4 | 10.1                         | 6.4                             | 29.2                     | 54.4              |
| Age, years        |          |      |                              |                                 |                          |                   |
| <10               | 653      | 6.8  | 5.7                          | 7.0                             | 21.6                     | 65.7              |
| 10-19             | 1162     | 12.0 | 8.5                          | 8.3                             | 21.8                     | 61.4              |
| 20-29             | 1572     | 16.3 | 11.3                         | 8.1                             | 25.9                     | 54.7              |
| 30-39             | 1581     | 16.4 | 11.6                         | 6.3                             | 26.5                     | 55.6              |
| 40-49             | 2095     | 21.7 | 11.4                         | 6.8                             | 29.6                     | 52.2              |
| 50-59             | 2008     | 20.8 | 12.6                         | 5.6                             | 35.2                     | 46.5              |
| 60+               | 580      | 6.0  | 11.9                         | 3.1                             | 38.1                     | 46.9              |
| Disease type      |          |      |                              |                                 |                          |                   |
| AML               | 4919     | 51.0 | 10.1                         | 6.1                             | 31.8                     | 52.0              |
| ALL               | 2071     | 21.5 | 10.4                         | 6.6                             | 29.3                     | 53.7              |
| CML               | 1525     | 15.8 | 12.9                         | 8.3                             | 18.0                     | 60.9              |
| MDS               | 1136     | 11.8 | 13.1                         | 7.1                             | 28.5                     | 51.2              |
| Disease status    |          |      |                              |                                 |                          |                   |
| Early             | 4873     | 50.5 | 9.0                          | 7.3                             | 21.1                     | 62.5              |
| Intermediate      | 2316     | 24.0 | 11.2                         | 7.0                             | 28.4                     | 53.5              |
| Advanced          | 2462     | 25.5 | 14.6                         | 5.1                             | 43.9                     | 36.4              |
| HLA compatibility |          |      |                              |                                 |                          |                   |
| Identical sibling | 3941     | 40.8 | 7.9                          | 5.7                             | 26.0                     | 60.4              |
| 8/8               | 4100     | 42.5 | 11.8                         | 7.3                             | 29.7                     | 51.1              |
| 7/8               | 1610     | 16.7 | 16.3                         | 7.5                             | 32.7                     | 43.5              |

## B Likelihood contributions and score equations

### B.1 Marginal likelihood contributions

Let  $\eta_\omega = X_\omega \beta_\omega$  and  $\Lambda_{\omega,0}(y) = \int_0^y \lambda_{\omega,0}(s) ds$ , for  $\omega \in \{14, 24, 23, 34\}$ .

$$\begin{aligned}
 f_1(y_1, y_2; X) &= \int_0^\infty f_1(y_1, y_2; X, \gamma) f_\gamma(\gamma) d\gamma \\
 &= \int_0^\infty [(1 - \pi) \cdot \gamma \cdot \lambda_{23,0}(y_1) e^{\eta_{23}} \cdot \exp\{-\gamma(\Lambda_{23,0}(y_1) e^{\eta_{23}} + \Lambda_{24,0}(y_1) e^{\eta_{24}})\} \cdot \\
 &\quad \gamma \cdot \lambda_{34,0}(y_2 - y_1) e^{\eta_{34}} \cdot \exp\{-\gamma \Lambda_{34,0}(y_2 - y_1) e^{\eta_{34}}\} \cdot \\
 &\quad [\Gamma(1/\theta)]^{-1} \theta^{-\frac{1}{\theta}} \gamma^{\frac{1}{\theta}-1} \exp\{-\gamma/\theta\}] d\gamma \\
 &= \frac{(1 - \pi) \cdot \lambda_{23,0}(y_1) e^{\eta_{23}} \cdot \lambda_{34,0}(y_2 - y_1) e^{\eta_{34}} \cdot (1 + \theta)}{[1 + \theta \{\Lambda_{23,0}(y_1) e^{\eta_{23}} + \Lambda_{24,0}(y_1) e^{\eta_{24}} + \Lambda_{34,0}(y_2 - y_1) e^{\eta_{34}}\}]^{1/\theta+2}}
 \end{aligned}$$

$$\begin{aligned}
 f_2(y_1, y_2; X) &= \int_0^\infty f_2(y_1, y_2; X, \gamma) f_\gamma(\gamma) d\gamma \\
 &= \int_0^\infty [(1 - \pi) \cdot \gamma \cdot \lambda_{23,0}(y_1) e^{\eta_{23}} \cdot \exp\{-\gamma(\Lambda_{23,0}(y_1) e^{\eta_{23}} + \Lambda_{24,0}(y_1) e^{\eta_{24}})\} \cdot \\
 &\quad \exp\{-\gamma \Lambda_{34,0}(y_2 - y_1) e^{\eta_{34}}\} \cdot [\Gamma(1/\theta)]^{-1} \theta^{-\frac{1}{\theta}} \gamma^{\frac{1}{\theta}-1} \exp\{-\gamma/\theta\}] d\gamma \\
 &= (1 - \pi) \cdot \lambda_{23,0}(y_1) e^{\eta_{23}} \cdot \\
 &\quad [1 + \theta \{\Lambda_{23,0}(y_1) e^{\eta_{23}} + \Lambda_{24,0}(y_1) e^{\eta_{24}} + \Lambda_{34,0}(y_2 - y_1) e^{\eta_{34}}\}]^{-1/\theta-1}
 \end{aligned}$$

$$\begin{aligned}
 f_3(y_1, y_2; X) &= \int_0^\infty f_3(y_1, y_2; X, \gamma) f_\gamma(\gamma) d\gamma \\
 &= \int_0^\infty [\pi \cdot \gamma \cdot \lambda_{14,0}(y_2) e^{\eta_{14}} \cdot \exp\{-\gamma \Lambda_{14,0}(y_2) e^{\eta_{14}}\} \cdot \\
 &\quad [\Gamma(1/\theta)]^{-1} \theta^{-\frac{1}{\theta}} \gamma^{\frac{1}{\theta}-1} \exp\{-\gamma/\theta\}] d\gamma \\
 &= \pi \cdot \lambda_{14,0}(y_2) e^{\eta_{14}} \cdot [\Gamma(1/\theta)]^{-1} \theta^{-\frac{1}{\theta}} \cdot \\
 &\quad \int_0^\infty \gamma^{1/\theta} \cdot \exp\left[-\gamma \left\{\frac{1}{\theta} + \Lambda_{14,0}(y_2) e^{\eta_{14}}\right\}\right] d\gamma \\
 &= \pi \cdot \lambda_{14,0}(y_2) e^{\eta_{14}} \{1 + \theta \cdot \Lambda_{14,0}(y_2) e^{\eta_{14}}\}^{-1/\theta-1}
 \end{aligned}$$

$$\begin{aligned}
 f_4(y_1, y_2; X) &= \int_0^\infty f_4(y_1, y_2; X, \gamma) f_\gamma(\gamma) d\gamma \\
 &= \int_0^\infty [\pi \cdot \gamma \cdot \lambda_{14,0}(y_2) e^{\eta_{14}} \cdot \exp\{-\gamma \Lambda_{14,0}(y_2) e^{\eta_{14}}\} + \\
 &\quad (1 - \pi) \cdot \gamma \cdot \lambda_{24,0}(y_2) e^{\eta_{24}} \cdot \exp\{-\gamma(\Lambda_{23,0}(y_2) e^{\eta_{23}} + \Lambda_{24,0}(y_2) e^{\eta_{24}})\}] \cdot f_\gamma(\gamma) d\gamma \\
 &= \int_0^\infty [\pi \cdot \gamma \cdot \lambda_{14,0}(y_2) e^{\eta_{14}} \cdot \exp\{-\gamma \Lambda_{14,0}(y_2) e^{\eta_{14}}\} + \\
 &\quad (1 - \pi) \cdot \gamma \cdot \lambda_{24,0}(y_2) e^{\eta_{24}} \cdot \exp\{-\gamma(\Lambda_{23,0}(y_2) e^{\eta_{23}} + \Lambda_{24,0}(y_2) e^{\eta_{24}})\}] \cdot \\
 &\quad [\Gamma(1/\theta)]^{-1} \theta^{-\frac{1}{\theta}} \gamma^{\frac{1}{\theta}-1} \exp\{-\gamma/\theta\}] d\gamma
 \end{aligned}$$

$$\begin{aligned}
&= \pi \cdot \lambda_{14,0}(y_2)e^{\eta_{14}} \{1 + \theta \cdot \Lambda_{14,0}(y_2)e^{\eta_{14}}\}^{-1/\theta-1} + \\
&\quad (1 - \pi) \cdot \lambda_{24,0}(y_2)e^{\eta_{24}} [1 + \theta \{\Lambda_{23,0}(y_2)e^{\eta_{23}} + \Lambda_{24,0}(y_2)e^{\eta_{24}}\}]^{-1/\theta-1}
\end{aligned}$$

$$\begin{aligned}
f_5(y_1, y_2; X) &= \int_0^\infty f_5(y_1, y_2; X, \gamma) \cdot f_\gamma(\gamma) d\gamma \\
&= \int_0^\infty \pi \exp\{-\gamma \cdot \Lambda_{14,0}(y_2)e^{\eta_{14}}\} \cdot [\Gamma(1/\theta)]^{-1} \theta^{-\frac{1}{\theta}} \gamma^{\frac{1}{\theta}-1} \exp\{-\gamma/\theta\} d\gamma \\
&= \pi [\Gamma(1/\theta)]^{-1} \theta^{-\frac{1}{\theta}} \int_0^\infty \gamma^{\frac{1}{\theta}-1} \exp\left[-\gamma \left\{\frac{1}{\theta} + \Lambda_{14,0}(y_2)e^{\eta_{14}}\right\}\right] d\gamma \\
&= \pi \{1 + \theta \cdot \Lambda_{14,0}(y_2)e^{\eta_{14}}\}^{-1/\theta}
\end{aligned}$$

$$\begin{aligned}
f_6(y_1, y_2; X) &= \int_0^\infty f_6(y_1, y_2; X, \gamma) f_\gamma(\gamma) d\gamma \\
&= \int_0^\infty [\pi \exp\{-\gamma \cdot \Lambda_{14,0}(y_2)e^{\eta_{14}}\} + \\
&\quad (1 - \pi) \cdot \exp\{-\gamma (\Lambda_{23,0}(y_2)e^{\eta_{23}} + \Lambda_{24,0}(y_2)e^{\eta_{24}})\}] \cdot f_\gamma(\gamma) d\gamma \\
&= \int_0^\infty [\pi \exp\{-\gamma \cdot \Lambda_{14,0}(y_2)e^{\eta_{14}}\} + \\
&\quad (1 - \pi) \cdot \exp\{-\gamma (\Lambda_{23,0}(y_2)e^{\eta_{23}} + \Lambda_{24,0}(y_2)e^{\eta_{24}})\}] \cdot \\
&\quad [\Gamma(1/\theta)]^{-1} \theta^{-\frac{1}{\theta}} \gamma^{\frac{1}{\theta}-1} \exp\{-\gamma/\theta\} d\gamma \\
&= \pi \{1 + \theta \cdot \Lambda_{14,0}(y_2)e^{\eta_{14}}\}^{-1/\theta} + (1 - \pi) [1 + \theta \{\Lambda_{23,0}(y_2)e^{\eta_{23}} + \Lambda_{24,0}(y_2)e^{\eta_{24}}\}]^{-1/\theta}
\end{aligned}$$

## C Joint density

As in the illness-death model with shared frailty, the transition hazards (6)-(9) determine the joint distribution of  $T_1$  and  $T_2$ . We denote the joint density on the observable region  $\mathcal{U} = (0 < T_1 < T_2) \cap (0 < T_1 < \tau)$ , by  $g_{\mathcal{U}}(t_1, t_2)$ , for  $t_1 > t_2$ . We assign the remaining probability mass along the line  $T_1 = \tau$ , with density denoted  $g_{T_1=\tau, T_2}(t_2)$ , representing subjects who never experience the non-terminal event  $T_1$ . This implies that the probability mass for non-susceptible patients ( $L = 1$ ) is distributed along the line  $T_1 = \tau$ . For patients who are susceptible ( $L = 0$ ), the set of possible transitions coincides with the standard illness-death model in Xu et al. (2010) [1] and the corresponding density expressions align with the joint density, which we denote by  $f$  and can be found in the Supplementary Materials of Lee et al (2016) [2].

We derive the joint density corresponding to the model in Section 3 for the semi-Markov model, where  $\Lambda_{\omega}(t) = \int_0^t \lambda_{\omega}(s) ds$ .

$$\begin{aligned}
 g(t_1, t_2 | \gamma) &= g(T_1 = t_1, T_2 = t_2 | \gamma) \\
 &= P(L = 1) \cdot g(t_1, t_2 | L = 1, \gamma) + P(L = 0) \cdot g(t_1, t_2 | L = 0, \gamma) \\
 &= \pi \cdot g(t_1, t_2 | L = 1, \gamma) + (1 - \pi) \cdot g(t_1, t_2 | L = 0, \gamma) \\
 &= \pi \cdot \lambda_{14}(t_2 | \gamma) \cdot \exp \{-\Lambda_{14}(t_2)\} \cdot 1(T_1 = \tau) + (1 - \pi) \cdot f(t_1, t_2 | \gamma) \\
 &= \pi \cdot \lambda_{14}(t_2 | \gamma) \cdot \exp \{-\Lambda_{14}(t_2)\} \cdot 1(T_1 = \tau) + \\
 &\quad (1 - \pi) \cdot [\lambda_{23}(t_1 | \gamma) \lambda_{34}(t_2 - t_1 | t_1, \gamma) \cdot \\
 &\quad \exp \left\{ -\Lambda_{23}(t_1 | \gamma) - \Lambda_{24}(t_1 | \gamma) - \int_0^{t_2 - t_1} \lambda_{34}(v | t_1, \gamma) dv \right\} \cdot 1(t_1 < t_2) + \\
 &\quad \lambda_{24}(t_2 | \gamma) \exp \{-\Lambda_{23}(t_2 | \gamma) - \Lambda_{34}(t_2 | \gamma)\} \cdot 1(T_1 = \tau)].
 \end{aligned}$$

Collecting like terms, we see that the probability density along the line  $T_1 = \tau$  is given by

$$g_{T_1=\tau, T_2}(t_2 | \gamma) = \pi \cdot \lambda_{14}(t_2 | \gamma) \cdot \exp \{-\Lambda_{14}(t_2)\} + (1 - \pi) \cdot \lambda_{24}(t_2 | \gamma) \exp \{-\Lambda_{23}(t_2 | \gamma) - \Lambda_{34}(t_2 | \gamma)\}$$

and the probability density over the region  $\mathcal{U}$  is given by

$$g_{\mathcal{U}}(t_1, t_2 | \gamma) = (1 - \pi) \cdot \lambda_{23}(t_1 | \gamma) \lambda_{34}(t_2 - t_1 | t_1, \gamma) \exp \left\{ -\Lambda_{23}(t_1 | \gamma) - \Lambda_{24}(t_1 | \gamma) - \int_0^{t_2 - t_1} \lambda_{34}(v | t_1, \gamma) dv \right\}.$$

## D Equivalence of absolute risk profiles and transition probabilities

Showing the equivalence of the transition probabilities presented in Putter et al. [3],  $P_{12}^0$ ,  $P_{13}^2$ ,  $P_{13}^1$  and  $P_{11}$ , and the absolute risk profiles presented in Section 3.5, which are calculated via integration of the joint density function. Note: The expressions in Putter et al. [3] are presented for the Markov model.

$$\text{Let } \Lambda_\omega(t) = \int_0^t \lambda_\omega(s) ds.$$

$$\begin{aligned} p_{\text{aGVHD only}}(t|\gamma) &= \int_t^\infty \int_0^t g_{\mathcal{U}}(u, v|\gamma) du dv \\ &= \int_t^\infty \int_0^t \lambda_1(u|\gamma) \cdot \lambda_3(v|\gamma) \exp\{-\Lambda_1(u|\gamma) - \Lambda_2(u|\gamma) - \Lambda_3(v|\gamma) + \Lambda_3(u|\gamma)\} du dv \\ &= \left[ \int_0^t \lambda_1(u|\gamma) \cdot \exp\{-\Lambda_1(u|\gamma) - \Lambda_2(u|\gamma) + \Lambda_3(u|\gamma)\} du \right] \left[ \int_t^\infty \lambda_3(v|\gamma) \exp\{-\Lambda_3(v|\gamma)\} dv \right] \\ &= \int_0^t \lambda_1(u|\gamma) \cdot \exp\{-\Lambda_1(u|\gamma) - \Lambda_2(u|\gamma) + \Lambda_3(u|\gamma)\} \cdot \exp\{-\Lambda_3(t|\gamma)\} du \\ &= P_{12}(0, t|\gamma) \\ &= \end{aligned}$$

$$\begin{aligned} p_{\text{aGVHD and death}}(t|\gamma) &= \int_0^t \int_u^t g_{\mathcal{U}}(u, v|\gamma) dv du \\ &= \int_0^t \int_u^t \lambda_1(u|\gamma) \cdot \lambda_3(v|\gamma) \exp\{-\Lambda_1(u|\gamma) - \Lambda_2(u|\gamma) - \Lambda_3(v|\gamma) + \Lambda_3(u|\gamma)\} dv du \\ &= \int_0^t \lambda_1(u|\gamma) \cdot \exp\{-\Lambda_1(u|\gamma) - \Lambda_2(u|\gamma)\} \cdot \left[ \int_u^t \lambda_3(v|\gamma) \cdot \exp\{-\Lambda_3(v|\gamma) + \Lambda_3(u|\gamma)\} dv \right] du \\ &= P_{13}^2(0, t|\gamma) \\ &= \end{aligned}$$

$$\begin{aligned} p_{\text{death only}}(t|\gamma) &= \int_0^t g_{T_1=\tau, T_2}(v|\gamma) dv \\ &= \int_0^t \lambda_2(v|\gamma) \cdot \exp\{-\Lambda_1(v|\gamma) - \Lambda_2(v|\gamma)\} dv \\ &= P_{13}^1(0, t|\gamma) \\ &= \end{aligned}$$

$$\begin{aligned} p_{\text{alive without aGVHD}}(t|\gamma) &= \int_t^\infty \int_u^\infty g_{\mathcal{U}}(u, v|\gamma) dv du + \int_t^\infty g_{T_1=\infty, T_2}(v|\gamma) dv \\ &= \int_t^\infty \int_u^\infty \lambda_1(u|\gamma) \cdot \lambda_3(v|\gamma) \exp\{-\Lambda_1(u|\gamma) - \Lambda_2(u|\gamma) - \Lambda_3(v|\gamma) + \Lambda_3(u|\gamma)\} dv du + \\ &\quad \int_t^\infty \lambda_2(v|\gamma) \cdot \exp\{-\Lambda_1(v|\gamma) - \Lambda_2(v|\gamma)\} dv \\ &= \int_t^\infty \lambda_1(u|\gamma) \cdot \exp\{-\Lambda_1(u|\gamma) - \Lambda_2(u|\gamma) + \Lambda_3(u|\gamma)\} \left[ \int_u^\infty \lambda_3(v|\gamma) \exp\{-\Lambda_3(v|\gamma)\} dv \right] du + \\ &\quad \int_t^\infty \lambda_2(v|\gamma) \cdot \exp\{-\Lambda_1(v|\gamma) - \Lambda_2(v|\gamma)\} dv \\ &= \int_t^\infty \lambda_1(u|\gamma) \cdot \exp\{-\Lambda_1(u|\gamma) - \Lambda_2(u|\gamma) + \Lambda_3(u|\gamma)\} \exp\{-\Lambda_3(u|\gamma)\} du + \end{aligned}$$

$$\begin{aligned}
& \int_t^\infty \lambda_2(v|\gamma) \cdot \exp\{-\Lambda_1(v|\gamma) - \Lambda_2(v|\gamma)\} dv \\
= & \int_t^\infty \lambda_1(u|\gamma) \cdot \exp\{-\Lambda_1(u|\gamma) - \Lambda_2(u|\gamma)\} du + \int_t^\infty \lambda_2(v|\gamma) \cdot \exp\{-\Lambda_1(v|\gamma) - \Lambda_2(v|\gamma)\} dv \\
= & \int_t^\infty (\lambda_1(u|\gamma) + \lambda_2(u|\gamma)) \cdot \exp\{-\Lambda_1(u|\gamma) - \Lambda_2(u|\gamma)\} du \\
= & \exp\{-\Lambda_1(t|\gamma) - \Lambda_2(t|\gamma)\} \\
= & P_{11}(0, t|\gamma)
\end{aligned}$$



## E Additional simulation results

### E.1 Baseline scenario

Table E.1: Empirical and analytical standard errors calculated using the standard deviations of the sampling distributions and means of the estimated analytical standard errors, based on 2,000 simulated datasets generated under the ‘baseline’ scenario with  $n=5,000$ .

|                                    | FI-ID $^\gamma$ |      | FI-ID |      | Conlon $^\gamma$ |      | Conlon |      | ID $^\gamma$ |      | Cure |      | MSM  |      |
|------------------------------------|-----------------|------|-------|------|------------------|------|--------|------|--------------|------|------|------|------|------|
|                                    | SD              | SE   | SD    | SE   | SD               | SE   | SD     | SE   | SD           | SE   | SD   | SE   | SD   | SE   |
| Non-susceptible fraction           |                 |      |       |      |                  |      |        |      |              |      |      |      |      |      |
| $\beta_{s,0}$                      | 0.05            | 0.05 | 0.05  | 0.05 | 0.75             | 0.05 | 0.05   | 0.05 |              |      | 0.05 | 0.05 |      |      |
| $\beta_{s,x}$                      | 0.06            | 0.06 | 0.06  | 0.06 | 0.56             | 0.06 | 0.06   | 0.07 |              |      | 0.07 | 0.07 |      |      |
| Non-susceptible: 1 $\rightarrow$ 4 |                 |      |       |      |                  |      |        |      |              |      |      |      |      |      |
| $\log(\kappa_{14})$                | 0.29            | 0.27 | 0.20  | 0.18 | 1.56             | 0.37 | 0.22   | 0.20 |              |      |      |      |      |      |
| $\log(\alpha_{14})$                | 0.03            | 0.03 | 0.03  | 0.02 | 0.13             | 0.04 | 0.03   | 0.02 |              |      |      |      |      |      |
| $\beta_{14,x}$                     | 0.05            | 0.05 | 0.05  | 0.04 | 1.32             | 0.06 | 0.05   | 0.05 |              |      |      |      |      |      |
| Susceptible: 2 $\rightarrow$ 4     |                 |      |       |      |                  |      |        |      |              |      |      |      |      |      |
| $\log(\kappa_{24})$                | 0.15            | 0.14 | 0.14  | 0.14 | 0.74             | 0.13 | 0.13   | 0.14 | 0.10         | 0.10 |      |      |      |      |
| $\log(\alpha_{24})$                | 0.03            | 0.03 | 0.03  | 0.03 | 0.43             | 0.03 | 0.03   | 0.03 | 0.04         | 0.03 |      |      |      |      |
| $\beta_{24,x}$                     | 0.08            | 0.08 | 0.09  | 0.08 | 0.60             | 0.08 | 0.08   | 0.08 | 0.06         | 0.05 |      |      | 0.04 | 0.04 |
| Susceptible: 2 $\rightarrow$ 3     |                 |      |       |      |                  |      |        |      |              |      |      |      |      |      |
| $\log(\kappa_{23})$                | 0.12            | 0.11 | 0.15  | 0.14 | 0.76             | 0.05 | 0.05   | 0.05 | 0.04         | 0.04 | 0.05 | 0.05 |      |      |
| $\log(\alpha_{23})$                | 0.03            | 0.03 | 0.03  | 0.03 | 0.64             | 0.02 | 0.02   | 0.02 | 0.04         | 0.03 | 0.02 | 0.02 |      |      |
| $\beta_{23,x}$                     | 0.06            | 0.06 | 0.06  | 0.06 | 2.90             | 0.06 | 0.06   | 0.06 | 0.06         | 0.05 | 0.06 | 0.06 | 0.05 | 0.05 |
| Susceptible: 3 $\rightarrow$ 4     |                 |      |       |      |                  |      |        |      |              |      |      |      |      |      |
| $\log(\kappa_{34})$                | 0.14            | 0.14 | 0.12  | 0.11 | 0.78             | 0.15 | 0.12   | 0.11 | 0.18         | 0.17 |      |      |      |      |
| $\log(\alpha_{34})$                | 0.02            | 0.02 | 0.02  | 0.02 | 0.24             | 0.02 | 0.02   | 0.02 | 0.03         | 0.02 |      |      |      |      |
| $\beta_{34,x}$                     | 0.06            | 0.05 | 0.05  | 0.05 | 1.23             | 0.05 | 0.05   | 0.05 | 0.06         | 0.06 |      |      | 0.05 | 0.05 |
| log-frailty variance               |                 |      |       |      |                  |      |        |      |              |      |      |      |      |      |
| $\log(\theta)$                     | 0.12            | 0.12 |       |      | 4.35             | 0.17 |        |      | 0.16         | 0.12 |      |      |      |      |

Table E.2: Coverage probabilities, based on 2,000 simulated datasets generated under the ‘baseline’ scenario with  $n=5,000$ .

|                                    | FI-ID $^\gamma$ | FI-ID | Conlon $^\gamma$ | Conlon |
|------------------------------------|-----------------|-------|------------------|--------|
| Non-susceptible fraction           |                 |       |                  |        |
| $\beta_{s,0}$                      | 0.94            | 0.44  | 0.46             | 0.95   |
| $\beta_{s,x}$                      | 0.95            | 0.95  | 0.91             | 0.90   |
| Non-susceptible: 1 $\rightarrow$ 4 |                 |       |                  |        |
| $\log(\kappa_{14})$                | 0.95            | 0.00  | 0.72             | 0.00   |
| $\log(\alpha_{14})$                | 0.94            | 0.00  | 0.76             | 0.00   |
| $\beta_{14,x}$                     | 0.95            | 0.75  | 0.87             | 0.92   |
| Susceptible: 2 $\rightarrow$ 4     |                 |       |                  |        |
| $\log(\kappa_{24})$                | 0.94            | 0.85  | 0.93             | 0.67   |
| $\log(\alpha_{24})$                | 0.95            | 0.09  | 0.86             | 0.08   |
| $\beta_{24,x}$                     | 0.94            | 0.74  | 0.95             | 0.90   |
| Susceptible: 2 $\rightarrow$ 3     |                 |       |                  |        |
| $\log(\kappa_{23})$                | 0.95            | 0.92  | 0.00             | 0.00   |
| $\log(\alpha_{23})$                | 0.95            | 0.54  | 0.03             | 0.30   |
| $\beta_{23,x}$                     | 0.95            | 0.94  | 0.95             | 0.96   |
| Susceptible: 3 $\rightarrow$ 4     |                 |       |                  |        |
| $\log(\kappa_{34})$                | 0.95            | 0.00  | 0.95             | 0.00   |
| $\log(\alpha_{34})$                | 0.95            | 0.00  | 0.96             | 0.00   |
| $\beta_{34,x}$                     | 0.94            | 0.92  | 0.94             | 0.92   |
| log-frailty variance               |                 |       |                  |        |
| $\log(\theta)$                     | 0.95            |       | 0.96             |        |

## E.2 Reducing sample size from $n=5,000$ to $n=1,000$

Table E.3: Mean point estimates, based on 2,000 simulated datasets generated under the ‘baseline’ scenario with  $n=1,000$ .

|                                    | Truth | FI-ID $^\gamma$ | FI-ID | Conlon $^\gamma$ | Conlon | ID $^\gamma$ | Cure  | MSM   |
|------------------------------------|-------|-----------------|-------|------------------|--------|--------------|-------|-------|
| Non-susceptible fraction           |       |                 |       |                  |        |              |       |       |
| $\beta_{s,0}$                      | -0.41 | -0.41           | -0.32 | -0.53            | -0.41  |              | 0.14  |       |
| $\beta_{s,x}$                      | 0.50  | 0.50            | 0.50  | 0.53             | 0.54   |              | 0.51  |       |
| Non-susceptible: 1 $\rightarrow$ 4 |       |                 |       |                  |        |              |       |       |
| $\log(\kappa_{14})$                | -8.52 | -8.55           | -7.13 | -9.13            | -7.49  |              |       |       |
| $\log(\alpha_{14})$                | 0.34  | 0.34            | 0.15  | 0.36             | 0.19   |              |       |       |
| $\beta_{14,x}$                     | 0.25  | 0.25            | 0.19  | 0.29             | 0.23   |              |       |       |
| Susceptible: 2 $\rightarrow$ 4     |       |                 |       |                  |        |              |       |       |
| $\log(\kappa_{24})$                | -5.30 | -5.33           | -5.23 | -5.26            | -5.12  | -5.37        |       |       |
| $\log(\alpha_{24})$                | 0.34  | 0.34            | 0.23  | 0.30             | 0.25   | 0.09         |       |       |
| $\beta_{24,x}$                     | 0.50  | 0.50            | 0.41  | 0.52             | 0.45   | -0.08        |       | 0.08  |
| Susceptible: 2 $\rightarrow$ 3     |       |                 |       |                  |        |              |       |       |
| $\log(\kappa_{23})$                | -2.16 | -2.21           | -2.41 | -1.80            | -1.77  | -1.98        | -1.50 |       |
| $\log(\alpha_{23})$                | -0.69 | -0.69           | -0.75 | -0.63            | -0.63  | -1.10        | -0.58 |       |
| $\beta_{23,x}$                     | 0.25  | 0.25            | 0.24  | 0.25             | 0.24   | -0.31        | 0.38  | -0.26 |
| Susceptible: 3 $\rightarrow$ 4     |       |                 |       |                  |        |              |       |       |
| $\log(\kappa_{34})$                | -6.21 | -6.25           | -5.70 | -6.26            | -5.70  | -7.04        |       |       |
| $\log(\alpha_{34})$                | 0.26  | 0.27            | 0.16  | 0.27             | 0.16   | 0.37         |       |       |
| $\beta_{34,x}$                     | 0.15  | 0.15            | 0.14  | 0.16             | 0.14   | 0.11         |       | 0.15  |
| log-frailty variance               |       |                 |       |                  |        |              |       |       |
| $\log(\theta)$                     | -1.71 | -1.79           |       | -2.06            |        | -0.52        |       |       |

Table E.4: Empirical and analytical standard errors calculated using the standard deviations of the sampling distributions and means of the estimated analytical standard errors, based on 2,000 simulated datasets generated under the ‘baseline’ scenario with  $n=1,000$ .

|                                    | FI-ID $^\gamma$ |      | FI-ID |      | Conlon $^\gamma$ |      | Conlon |      | ID $^\gamma$ |      | Cure |      | MSM  |      |
|------------------------------------|-----------------|------|-------|------|------------------|------|--------|------|--------------|------|------|------|------|------|
|                                    | SD              | SE   | SD    | SE   | SD               | SE   | SD     | SE   | SD           | SE   | SD   | SE   | SD   | SE   |
| Non-susceptible fraction           |                 |      |       |      |                  |      |        |      |              |      |      |      |      |      |
| $\beta_{s,0}$                      | 0.10            | 0.10 | 0.10  | 0.11 | 0.55             | 0.12 | 0.11   | 0.11 |              |      | 0.11 | 0.12 |      |      |
| $\beta_{s,x}$                      | 0.14            | 0.14 | 0.14  | 0.14 | 0.26             | 0.15 | 0.14   | 0.15 |              |      | 0.14 | 0.15 |      |      |
| Non-susceptible: 1 $\rightarrow$ 4 |                 |      |       |      |                  |      |        |      |              |      |      |      |      |      |
| $\log(\kappa_{14})$                | 0.63            | 0.62 | 0.47  | 0.42 | 1.65             | 0.84 | 0.52   | 0.46 |              |      |      |      |      |      |
| $\log(\alpha_{14})$                | 0.07            | 0.07 | 0.06  | 0.05 | 1.19             | 0.09 | 0.06   | 0.05 |              |      |      |      |      |      |
| $\beta_{14,x}$                     | 0.12            | 0.12 | 0.10  | 0.10 | 0.71             | 0.13 | 0.11   | 0.10 |              |      |      |      |      |      |
| Susceptible: 2 $\rightarrow$ 4     |                 |      |       |      |                  |      |        |      |              |      |      |      |      |      |
| $\log(\kappa_{24})$                | 0.32            | 0.31 | 0.31  | 0.32 | 0.64             | 0.30 | 0.30   | 0.31 | 0.24         | 0.23 |      |      |      |      |
| $\log(\alpha_{24})$                | 0.07            | 0.07 | 0.07  | 0.08 | 0.36             | 0.06 | 0.06   | 0.06 | 0.08         | 0.06 |      |      |      |      |
| $\beta_{24,x}$                     | 0.18            | 0.18 | 0.21  | 0.18 | 0.54             | 0.18 | 0.19   | 0.18 | 0.12         | 0.12 |      |      | 0.08 | 0.08 |
| Susceptible: 2 $\rightarrow$ 3     |                 |      |       |      |                  |      |        |      |              |      |      |      |      |      |
| $\log(\kappa_{23})$                | 0.31            | 0.30 | 0.68  | 0.85 | 0.58             | 0.11 | 0.10   | 0.11 | 0.08         | 0.10 | 0.12 | 0.12 |      |      |
| $\log(\alpha_{23})$                | 0.07            | 0.07 | 0.07  | 0.07 | 0.61             | 0.05 | 0.05   | 0.05 | 0.09         | 0.07 | 0.05 | 0.05 |      |      |
| $\beta_{23,x}$                     | 0.13            | 0.13 | 0.13  | 0.13 | 0.63             | 0.13 | 0.12   | 0.13 | 0.12         | 0.12 | 0.14 | 0.15 | 0.10 | 0.11 |
| Susceptible: 3 $\rightarrow$ 4     |                 |      |       |      |                  |      |        |      |              |      |      |      |      |      |
| $\log(\kappa_{34})$                | 0.31            | 0.31 | 0.27  | 0.26 | 1.11             | 0.33 | 0.27   | 0.26 | 0.42         | 0.37 |      |      |      |      |
| $\log(\alpha_{34})$                | 0.05            | 0.05 | 0.04  | 0.04 | 0.10             | 0.05 | 0.04   | 0.04 | 0.06         | 0.05 |      |      |      |      |
| $\beta_{34,x}$                     | 0.12            | 0.12 | 0.11  | 0.11 | 0.61             | 0.12 | 0.11   | 0.11 | 0.14         | 0.14 |      |      | 0.11 | 0.11 |
| log-frailty variance               |                 |      |       |      |                  |      |        |      |              |      |      |      |      |      |
| $\log(\theta)$                     | 0.37            | 0.35 |       |      | 3.99             | 0.66 |        |      | 0.38         | 0.29 |      |      |      |      |

Table E.5: Coverage probabilities, based on 2,000 simulated datasets generated under the ‘baseline’ scenario with  $n=1,000$ .

|                                    | FI-ID $^\gamma$ | FI-ID | Conlon $^\gamma$ | Conlon |
|------------------------------------|-----------------|-------|------------------|--------|
| Non-susceptible fraction           |                 |       |                  |        |
| $\beta_{s,0}$                      | 0.95            | 0.87  | 0.87             | 0.96   |
| $\beta_{s,x}$                      | 0.96            | 0.97  | 0.95             | 0.95   |
| Non-susceptible: 1 $\rightarrow$ 4 |                 |       |                  |        |
| $\log(\kappa_{14})$                | 0.94            | 0.12  | 0.93             | 0.40   |
| $\log(\alpha_{14})$                | 0.94            | 0.08  | 0.92             | 0.27   |
| $\beta_{14,x}$                     | 0.94            | 0.89  | 0.94             | 0.93   |
| Susceptible: 2 $\rightarrow$ 4     |                 |       |                  |        |
| $\log(\kappa_{24})$                | 0.95            | 0.94  | 0.95             | 0.90   |
| $\log(\alpha_{24})$                | 0.96            | 0.75  | 0.95             | 0.71   |
| $\beta_{24,x}$                     | 0.95            | 0.89  | 0.95             | 0.94   |
| Susceptible: 2 $\rightarrow$ 3     |                 |       |                  |        |
| $\log(\kappa_{23})$                | 0.95            | 0.98  | 0.10             | 0.05   |
| $\log(\alpha_{23})$                | 0.96            | 0.92  | 0.57             | 0.78   |
| $\beta_{23,x}$                     | 0.96            | 0.94  | 0.95             | 0.96   |
| Susceptible: 3 $\rightarrow$ 4     |                 |       |                  |        |
| $\log(\kappa_{34})$                | 0.95            | 0.47  | 0.95             | 0.47   |
| $\log(\alpha_{34})$                | 0.95            | 0.30  | 0.95             | 0.30   |
| $\beta_{34,x}$                     | 0.95            | 0.93  | 0.95             | 0.93   |
| log-frailty variance               |                 |       |                  |        |
| $\log(\theta)$                     | 0.97            |       | 0.97             |        |

### E.3 Administrative censoring via a censoring variable simulated from an Exponential distribution with mean 100

Table E.6: Mean point estimates, based on 2,000 simulated datasets of size  $n=5,000$  generated with administrative censoring via a censoring variable simulated from an Exponential distribution with mean 100.

|                                    | Truth | FI-ID $^\gamma$ | FI-ID | Conlon $^\gamma$ | Conlon | ID $^\gamma$ | Cure  | MSM   |
|------------------------------------|-------|-----------------|-------|------------------|--------|--------------|-------|-------|
| Non-susceptible fraction           |       |                 |       |                  |        |              |       |       |
| $\beta_{s,0}$                      | -0.41 | -0.40           | -0.31 | -0.60            | -0.52  |              | 0.12  |       |
| $\beta_{s,x}$                      | 0.50  | 0.50            | 0.48  | 0.57             | 0.56   |              | 0.51  |       |
| Non-susceptible: 1 $\rightarrow$ 4 |       |                 |       |                  |        |              |       |       |
| $\log(\kappa_{14})$                | -8.52 | -8.52           | -7.26 | -10.46           | -9.33  |              |       |       |
| $\log(\alpha_{14})$                | 0.34  | 0.33            | 0.17  | 0.52             | 0.40   |              |       |       |
| $\beta_{14,x}$                     | 0.25  | 0.26            | 0.17  | 0.47             | 0.40   |              |       |       |
| Susceptible: 2 $\rightarrow$ 4     |       |                 |       |                  |        |              |       |       |
| $\log(\kappa_{24})$                | -5.30 | -5.32           | -5.25 | -5.23            | -5.14  | -5.20        |       |       |
| $\log(\alpha_{24})$                | 0.34  | 0.34            | 0.26  | 0.29             | 0.25   | 0.26         |       |       |
| $\beta_{24,x}$                     | 0.50  | 0.50            | 0.43  | 0.52             | 0.49   | -0.05        |       | 0.08  |
| Susceptible: 2 $\rightarrow$ 3     |       |                 |       |                  |        |              |       |       |
| $\log(\kappa_{23})$                | -2.16 | -2.17           | -2.27 | -1.83            | -1.81  | -2.08        | -1.50 |       |
| $\log(\alpha_{23})$                | -0.69 | -0.69           | -0.74 | -0.64            | -0.67  | -0.64        | -0.59 |       |
| $\beta_{23,x}$                     | 0.25  | 0.25            | 0.23  | 0.24             | 0.24   | -0.18        | 0.37  | -0.26 |
| Susceptible: 3 $\rightarrow$ 4     |       |                 |       |                  |        |              |       |       |
| $\log(\kappa_{34})$                | -6.21 | -6.21           | -5.95 | -6.19            | -5.95  | -7.38        |       |       |
| $\log(\alpha_{34})$                | 0.26  | 0.26            | 0.21  | 0.25             | 0.21   | 0.40         |       |       |
| $\beta_{34,x}$                     | 0.15  | 0.15            | 0.14  | 0.15             | 0.14   | 0.03         |       | 0.14  |
| log-frailty variance               |       |                 |       |                  |        |              |       |       |
| $\log(\theta)$                     | -1.71 | -1.75           |       | -2.02            |        | 0.81         |       |       |

Table E.7: Empirical and analytical standard errors calculated using the standard deviations of the sampling distributions and means of the estimated analytical standard errors, based on 2,000 simulated datasets of size  $n=5,000$  generated with administrative censoring via a censoring variable simulated from an Exponential distribution with mean 100.

|                                    | FI-ID $^\gamma$ |      | FI-ID |      | Conlon $^\gamma$ |      | Conlon |      | ID $^\gamma$ |      | Cure |      | MSM  |      |
|------------------------------------|-----------------|------|-------|------|------------------|------|--------|------|--------------|------|------|------|------|------|
|                                    | SD              | SE   | SD    | SE   | SD               | SE   | SD     | SE   | SD           | SE   | SD   | SE   | SD   | SE   |
| Non-susceptible fraction           |                 |      |       |      |                  |      |        |      |              |      |      |      |      |      |
| $\beta_{s,0}$                      | 0.07            | 0.06 | 0.06  | 0.06 | 0.15             | 0.08 | 0.07   | 0.07 |              |      | 0.07 | 0.07 |      |      |
| $\beta_{s,x}$                      | 0.08            | 0.08 | 0.08  | 0.08 | 0.12             | 0.08 | 0.08   | 0.08 |              |      | 0.08 | 0.08 |      |      |
| Non-susceptible: 1 $\rightarrow$ 4 |                 |      |       |      |                  |      |        |      |              |      |      |      |      |      |
| $\log(\kappa_{14})$                | 0.91            | 0.87 | 0.67  | 0.69 | 1.17             | 1.22 | 0.98   | 0.99 |              |      |      |      |      |      |
| $\log(\alpha_{14})$                | 0.11            | 0.11 | 0.10  | 0.10 | 0.12             | 0.12 | 0.11   | 0.11 |              |      |      |      |      |      |
| $\beta_{14,x}$                     | 0.16            | 0.16 | 0.14  | 0.14 | 0.53             | 0.21 | 0.18   | 0.18 |              |      |      |      |      |      |
| Susceptible: 2 $\rightarrow$ 4     |                 |      |       |      |                  |      |        |      |              |      |      |      |      |      |
| $\log(\kappa_{24})$                | 0.15            | 0.15 | 0.15  | 0.16 | 0.14             | 0.14 | 0.14   | 0.14 | 0.11         | 0.12 |      |      |      |      |
| $\log(\alpha_{24})$                | 0.04            | 0.03 | 0.04  | 0.04 | 0.03             | 0.03 | 0.03   | 0.03 | 0.03         | 0.03 |      |      |      |      |
| $\beta_{24,x}$                     | 0.10            | 0.09 | 0.10  | 0.09 | 0.10             | 0.10 | 0.09   | 0.09 | 0.09         | 0.09 |      |      | 0.04 | 0.04 |
| Susceptible: 2 $\rightarrow$ 3     |                 |      |       |      |                  |      |        |      |              |      |      |      |      |      |
| $\log(\kappa_{23})$                | 0.14            | 0.13 | 0.18  | 0.17 | 0.06             | 0.05 | 0.05   | 0.05 | 0.05         | 0.05 | 0.06 | 0.06 |      |      |
| $\log(\alpha_{23})$                | 0.03            | 0.03 | 0.03  | 0.03 | 0.03             | 0.03 | 0.02   | 0.02 | 0.03         | 0.03 | 0.03 | 0.03 |      |      |
| $\beta_{23,x}$                     | 0.07            | 0.07 | 0.07  | 0.07 | 0.07             | 0.07 | 0.07   | 0.07 | 0.07         | 0.07 | 0.08 | 0.08 | 0.05 | 0.05 |
| Susceptible: 3 $\rightarrow$ 4     |                 |      |       |      |                  |      |        |      |              |      |      |      |      |      |
| $\log(\kappa_{34})$                | 0.18            | 0.18 | 0.16  | 0.17 | 0.19             | 0.19 | 0.16   | 0.17 | 0.21         | 0.20 |      |      |      |      |
| $\log(\alpha_{34})$                | 0.03            | 0.03 | 0.03  | 0.03 | 0.03             | 0.03 | 0.03   | 0.03 | 0.03         | 0.03 |      |      |      |      |
| $\beta_{34,x}$                     | 0.08            | 0.08 | 0.08  | 0.07 | 0.08             | 0.08 | 0.08   | 0.07 | 0.10         | 0.10 |      |      | 0.05 | 0.05 |
| log-frailty variance               |                 |      |       |      |                  |      |        |      |              |      |      |      |      |      |
| $\log(\theta)$                     | 0.23            | 0.23 |       |      | 0.67             | 0.67 |        |      | 0.07         | 0.07 |      |      |      |      |

Table E.8: Coverage probabilities, based on 2,000 simulated datasets of size  $n=5,000$  generated with administrative censoring via a censoring variable simulated from an Exponential distribution with mean 100.

|                                    | FI-ID $^\gamma$ | FI-ID | Conlon $^\gamma$ | Conlon |
|------------------------------------|-----------------|-------|------------------|--------|
| Non-susceptible fraction           |                 |       |                  |        |
| $\beta_{s,0}$                      | 0.95            | 0.63  | 0.34             | 0.66   |
| $\beta_{s,x}$                      | 0.95            | 0.94  | 0.86             | 0.89   |
| Non-susceptible: 1 $\rightarrow$ 4 |                 |       |                  |        |
| $\log(\kappa_{14})$                | 0.93            | 0.54  | 0.67             | 0.89   |
| $\log(\alpha_{14})$                | 0.94            | 0.62  | 0.66             | 0.89   |
| $\beta_{14,x}$                     | 0.95            | 0.90  | 0.82             | 0.89   |
| Susceptible: 2 $\rightarrow$ 4     |                 |       |                  |        |
| $\log(\kappa_{24})$                | 0.95            | 0.92  | 0.92             | 0.78   |
| $\log(\alpha_{24})$                | 0.95            | 0.45  | 0.72             | 0.17   |
| $\beta_{24,x}$                     | 0.95            | 0.87  | 0.94             | 0.95   |
| Susceptible: 2 $\rightarrow$ 3     |                 |       |                  |        |
| $\log(\kappa_{23})$                | 0.95            | 0.97  | 0.00             | 0.00   |
| $\log(\alpha_{23})$                | 0.95            | 0.71  | 0.50             | 0.83   |
| $\beta_{23,x}$                     | 0.94            | 0.93  | 0.95             | 0.94   |
| Susceptible: 3 $\rightarrow$ 4     |                 |       |                  |        |
| $\log(\kappa_{34})$                | 0.96            | 0.63  | 0.95             | 0.63   |
| $\log(\alpha_{34})$                | 0.96            | 0.56  | 0.95             | 0.56   |
| $\beta_{34,x}$                     | 0.95            | 0.94  | 0.95             | 0.94   |
| log-frailty variance               |                 |       |                  |        |
| $\log(\theta)$                     | 0.97            |       | 0.99             |        |

## E.4 Administrative censoring solely of the terminal event at 365 days

Table E.9: Mean point estimates, based on 2,000 simulated datasets of size  $n=5,000$  with administrative censoring solely of the terminal event at 365 days post-transplantation. For the proposed finite interval illness-death model with frailty using B-spline parameterized baseline hazard functions (FI-ID $^{\gamma}_{BS}$ ), we made the following specifications: for all transitions we placed two internal knots at the 33rd and 67th percentiles of the observed event times; we used quadratic B-splines for the 1 $\rightarrow$ 4 and 3 $\rightarrow$ 4 transitions and cubic B-splines for the 2 $\rightarrow$ 4 and 2 $\rightarrow$ 3 transitions.

|                                    | Truth | FI-ID $^{\gamma}_{WB}$ | FI-ID $^{\gamma}_{BS}$ | FI-ID | Conlon $^{\gamma}$ | Conlon | ID $^{\gamma}$ | Cure  | MSM   |
|------------------------------------|-------|------------------------|------------------------|-------|--------------------|--------|----------------|-------|-------|
| Non-susceptible fraction           |       |                        |                        |       |                    |        |                |       |       |
| $\beta_{s,0}$                      | -0.41 | -0.41                  | -0.38                  | -0.34 | -0.54              | -0.48  |                | 0.14  |       |
| $\beta_{s,x}$                      | 0.50  | 0.50                   | 0.49                   | 0.50  | 0.54               | 0.53   |                | 0.50  |       |
| Non-susceptible: 1 $\rightarrow$ 4 |       |                        |                        |       |                    |        |                |       |       |
| $\log(\kappa_{14})$                | -8.52 | -8.51                  |                        | -7.53 | -9.66              | -8.78  |                |       |       |
| $\log(\alpha_{14})$                | 0.34  | 0.33                   |                        | 0.21  | 0.45               | 0.35   |                |       |       |
| $\beta_{14,x}$                     | 0.25  | 0.25                   | 0.23                   | 0.21  | 0.33               | 0.29   |                |       |       |
| Susceptible: 2 $\rightarrow$ 4     |       |                        |                        |       |                    |        |                |       |       |
| $\log(\kappa_{24})$                | -5.30 | -5.30                  |                        | -5.16 | -5.24              | -5.10  | -5.50          |       |       |
| $\log(\alpha_{24})$                | 0.34  | 0.34                   |                        | 0.23  | 0.31               | 0.25   | 0.32           |       |       |
| $\beta_{24,x}$                     | 0.50  | 0.50                   | 0.48                   | 0.41  | 0.49               | 0.46   | -0.03          |       | -0.05 |
| Susceptible: 2 $\rightarrow$ 3     |       |                        |                        |       |                    |        |                |       |       |
| $\log(\kappa_{23})$                | -2.16 | -2.17                  |                        | -2.38 | -1.80              | -1.79  | -2.02          | -1.50 |       |
| $\log(\alpha_{23})$                | -0.69 | -0.69                  |                        | -0.76 | -0.62              | -0.66  | -0.71          | -0.58 |       |
| $\beta_{23,x}$                     | 0.25  | 0.25                   | 0.25                   | 0.23  | 0.22               | 0.22   | -0.23          | 0.38  | -0.26 |
| Susceptible: 3 $\rightarrow$ 4     |       |                        |                        |       |                    |        |                |       |       |
| $\log(\kappa_{34})$                | -6.21 | -6.22                  |                        | -5.79 | -6.18              | -5.79  | -7.87          |       |       |
| $\log(\alpha_{34})$                | 0.26  | 0.26                   |                        | 0.18  | 0.25               | 0.18   | 0.48           |       |       |
| $\beta_{34,x}$                     | 0.15  | 0.15                   | 0.15                   | 0.14  | 0.15               | 0.14   | 0.01           |       | 0.14  |
| log-frailty variance               |       |                        |                        |       |                    |        |                |       |       |
| $\log(\theta)$                     | -1.71 | -1.73                  | -1.78                  |       | -1.89              |        | 0.80           |       |       |

Table E.10: Empirical and analytical standard errors calculated using the standard deviations of the sampling distributions and means of the estimated analytical standard errors, based on 2,000 simulated datasets of size  $n=5,000$  with administrative censoring solely of the terminal event at 365 days post-transplantation. For the proposed finite interval illness-death model with frailty using B-spline parameterized baseline hazard functions (FI-ID $^{\gamma}_{BS}$ ), we made the following specifications: for all transitions we placed two internal knots at the 33rd and 67th percentiles of the observed event times; we used quadratic B-splines for the 1 $\rightarrow$ 4 and 3 $\rightarrow$ 4 transitions and cubic B-splines for the 2 $\rightarrow$ 4 and 2 $\rightarrow$ 3 transitions.

|                                    | FI-ID $^{\gamma}_{WB}$ |      | FI-ID $^{\gamma}_{BS}$ |      | FI-ID |      | Conlon $^{\gamma}$ |      | Conlon |      | ID $^{\gamma}$ |      | Cure |      | MSM  |      |
|------------------------------------|------------------------|------|------------------------|------|-------|------|--------------------|------|--------|------|----------------|------|------|------|------|------|
|                                    | SD                     | SE   | SD                     | SE   | SD    | SE   | SD                 | SE   | SD     | SE   | SD             | SE   | SD   | SE   | SD   | SE   |
| Non-susceptible fraction           |                        |      |                        |      |       |      |                    |      |        |      |                |      |      |      |      |      |
| $\beta_{s,0}$                      | 0.05                   | 0.05 | 0.08                   | 0.06 | 0.05  | 0.05 | 0.05               | 0.05 | 0.05   | 0.05 |                |      | 0.05 | 0.05 |      |      |
| $\beta_{s,x}$                      | 0.06                   | 0.06 | 0.07                   | 0.07 | 0.06  | 0.06 | 0.06               | 0.06 | 0.06   | 0.06 |                |      | 0.07 | 0.07 |      |      |
| Non-susceptible: 1 $\rightarrow$ 4 |                        |      |                        |      |       |      |                    |      |        |      |                |      |      |      |      |      |
| $\log(\kappa_{14})$                | 0.43                   | 0.42 |                        |      | 0.37  | 0.37 | 0.52               | 0.55 | 0.44   | 0.47 |                |      |      |      |      |      |
| $\log(\alpha_{14})$                | 0.05                   | 0.05 |                        |      | 0.05  | 0.05 | 0.05               | 0.06 | 0.05   | 0.05 |                |      |      |      |      |      |
| $\beta_{14,x}$                     | 0.07                   | 0.07 | 0.07                   | 0.07 | 0.06  | 0.06 | 0.07               | 0.07 | 0.07   | 0.07 |                |      |      |      |      |      |
| Susceptible: 2 $\rightarrow$ 4     |                        |      |                        |      |       |      |                    |      |        |      |                |      |      |      |      |      |
| $\log(\kappa_{24})$                | 0.15                   | 0.14 |                        |      | 0.13  | 0.13 | 0.13               | 0.13 | 0.13   | 0.13 | 0.11           | 0.11 |      |      |      |      |
| $\log(\alpha_{24})$                | 0.03                   | 0.03 |                        |      | 0.03  | 0.03 | 0.03               | 0.03 | 0.02   | 0.03 | 0.02           | 0.02 |      |      |      |      |
| $\beta_{24,x}$                     | 0.08                   | 0.08 | 0.09                   | 0.08 | 0.09  | 0.08 | 0.08               | 0.08 | 0.08   | 0.08 | 0.08           | 0.08 |      |      | 0.04 | 0.04 |
| Susceptible: 2 $\rightarrow$ 3     |                        |      |                        |      |       |      |                    |      |        |      |                |      |      |      |      |      |
| $\log(\kappa_{23})$                | 0.12                   | 0.11 |                        |      | 0.17  | 0.16 | 0.05               | 0.05 | 0.05   | 0.05 | 0.05           | 0.05 | 0.05 | 0.05 |      |      |
| $\log(\alpha_{23})$                | 0.03                   | 0.03 |                        |      | 0.03  | 0.03 | 0.02               | 0.02 | 0.02   | 0.02 | 0.03           | 0.03 | 0.02 | 0.02 |      |      |
| $\beta_{23,x}$                     | 0.06                   | 0.06 | 0.07                   | 0.06 | 0.06  | 0.06 | 0.06               | 0.06 | 0.05   | 0.06 | 0.07           | 0.07 | 0.06 | 0.06 | 0.05 | 0.05 |
| Susceptible: 3 $\rightarrow$ 4     |                        |      |                        |      |       |      |                    |      |        |      |                |      |      |      |      |      |
| $\log(\kappa_{34})$                | 0.14                   | 0.14 |                        |      | 0.12  | 0.12 | 0.14               | 0.15 | 0.12   | 0.12 | 0.17           | 0.16 |      |      |      |      |
| $\log(\alpha_{34})$                | 0.02                   | 0.02 |                        |      | 0.02  | 0.02 | 0.02               | 0.02 | 0.02   | 0.02 | 0.02           | 0.02 |      |      |      |      |
| $\beta_{34,x}$                     | 0.06                   | 0.05 | 0.05                   | 0.05 | 0.05  | 0.05 | 0.06               | 0.05 | 0.05   | 0.05 | 0.08           | 0.08 |      |      | 0.05 | 0.05 |
| log-frailty variance               |                        |      |                        |      |       |      |                    |      |        |      |                |      |      |      |      |      |
| $\log(\theta)$                     | 0.14                   | 0.14 | 0.22                   | 0.21 |       |      | 0.23               | 0.24 |        |      | 0.05           | 0.05 |      |      |      |      |

Table E.11: Coverage probabilities, based on 2,000 simulated datasets of size  $n=5,000$  with administrative censoring solely of the terminal event at 365 days post-transplantation.

|                                    | FI-ID $^{\gamma}_{WB}$ | FI-ID $^{\gamma}_{BS}$ | FI-ID | Conlon $^{\gamma}$ | Conlon |
|------------------------------------|------------------------|------------------------|-------|--------------------|--------|
| Non-susceptible fraction           |                        |                        |       |                    |        |
| $\beta_{s,0}$                      | 0.95                   | 0.85                   | 0.69  | 0.32               | 0.74   |
| $\beta_{s,x}$                      | 0.95                   | 0.93                   | 0.95  | 0.91               | 0.91   |
| Non-susceptible: 1 $\rightarrow$ 4 |                        |                        |       |                    |        |
| $\log(\kappa_{14})$                | 0.95                   |                        | 0.24  | 0.46               | 0.93   |
| $\log(\alpha_{14})$                | 0.94                   |                        | 0.23  | 0.49               | 0.95   |
| $\beta_{14,x}$                     | 0.95                   | 0.94                   | 0.87  | 0.80               | 0.92   |
| Susceptible: 2 $\rightarrow$ 4     |                        |                        |       |                    |        |
| $\log(\kappa_{24})$                | 0.94                   |                        | 0.81  | 0.92               | 0.63   |
| $\log(\alpha_{24})$                | 0.95                   |                        | 0.08  | 0.82               | 0.06   |
| $\beta_{24,x}$                     | 0.95                   | 0.95                   | 0.76  | 0.94               | 0.91   |
| Susceptible: 2 $\rightarrow$ 3     |                        |                        |       |                    |        |
| $\log(\kappa_{23})$                | 0.95                   |                        | 0.88  | 0.00               | 0.00   |
| $\log(\alpha_{23})$                | 0.95                   |                        | 0.46  | 0.12               | 0.62   |
| $\beta_{23,x}$                     | 0.95                   | 0.91                   | 0.93  | 0.93               | 0.91   |
| Susceptible: 3 $\rightarrow$ 4     |                        |                        |       |                    |        |
| $\log(\kappa_{34})$                | 0.95                   |                        | 0.07  | 0.95               | 0.07   |
| $\log(\alpha_{34})$                | 0.95                   |                        | 0.01  | 0.94               | 0.01   |
| $\beta_{34,x}$                     | 0.94                   | 0.95                   | 0.93  | 0.94               | 0.93   |
| log-frailty variance               |                        |                        |       |                    |        |
| $\log(\theta)$                     | 0.96                   | 0.96                   |       | 0.96               |        |



## E.5 Increasing the non-susceptibility fraction from 46% to 76%

Table E.12: Mean point estimates, based on 2,000 simulated datasets of size  $n=5,000$  generated by increasing the non-susceptibility fraction from 46% to 76%.

|                                    | Truth | FI-ID $^\gamma$ | FI-ID | Conlon $^\gamma$ | Conlon | ID $^\gamma$ | Cure  | MSM   |
|------------------------------------|-------|-----------------|-------|------------------|--------|--------------|-------|-------|
| Non-susceptible fraction           |       |                 |       |                  |        |              |       |       |
| $\beta_{s,0}$                      | 0.84  | 0.84            | 0.96  | 0.74             | 0.91   |              | 1.15  |       |
| $\beta_{s,x}$                      | 0.50  | 0.50            | 0.54  | 0.53             | 0.56   |              | 0.61  |       |
| Non-susceptible: 1 $\rightarrow$ 4 |       |                 |       |                  |        |              |       |       |
| $\log(\kappa_{14})$                | -8.52 | -8.50           | -7.23 | -8.86            | -7.34  |              |       |       |
| $\log(\alpha_{14})$                | 0.34  | 0.33            | 0.16  | 0.37             | 0.18   |              |       |       |
| $\beta_{14,x}$                     | 0.25  | 0.25            | 0.21  | 0.28             | 0.22   |              |       |       |
| Susceptible: 2 $\rightarrow$ 4     |       |                 |       |                  |        |              |       |       |
| $\log(\kappa_{24})$                | -5.30 | -5.31           | -5.31 | -5.33            | -5.19  | -6.44        |       |       |
| $\log(\alpha_{24})$                | 0.34  | 0.34            | 0.21  | 0.32             | 0.25   | 0.08         |       |       |
| $\beta_{24,x}$                     | 0.50  | 0.50            | 0.33  | 0.52             | 0.41   | 0.14         |       | 0.15  |
| Susceptible: 2 $\rightarrow$ 3     |       |                 |       |                  |        |              |       |       |
| $\log(\kappa_{23})$                | -2.16 | -2.18           | -2.09 | -1.83            | -1.73  | -2.76        | -1.45 |       |
| $\log(\alpha_{23})$                | -0.69 | -0.69           | -0.72 | -0.62            | -0.63  | -1.45        | -0.58 |       |
| $\beta_{23,x}$                     | 0.25  | 0.25            | 0.30  | 0.23             | 0.30   | -0.39        | 0.37  | -0.40 |
| Susceptible: 3 $\rightarrow$ 4     |       |                 |       |                  |        |              |       |       |
| $\log(\kappa_{34})$                | -6.21 | -6.22           | -5.67 | -6.26            | -5.67  | -5.91        |       |       |
| $\log(\alpha_{34})$                | 0.26  | 0.26            | 0.15  | 0.27             | 0.15   | 0.20         |       |       |
| $\beta_{34,x}$                     | 0.15  | 0.15            | 0.14  | 0.15             | 0.14   | 0.14         |       | 0.14  |
| log-frailty variance               |       |                 |       |                  |        |              |       |       |
| $\log(\theta)$                     | -1.71 | -1.74           |       | -1.68            |        | -2.97        |       |       |

Table E.13: Empirical and analytical standard errors calculated using the standard deviations of the sampling distributions and means of the estimated analytical standard errors, based on 2,000 simulated datasets of size  $n=5,000$  generated by increasing the non-susceptibility fraction from 46% to 76%.

|                                    | FI-ID $^\gamma$ |      | FI-ID |      | Conlon $^\gamma$ |      | Conlon |      | ID $^\gamma$ |      | Cure |      | MSM  |      |
|------------------------------------|-----------------|------|-------|------|------------------|------|--------|------|--------------|------|------|------|------|------|
|                                    | SD              | SE   | SD    | SE   | SD               | SE   | SD     | SE   | SD           | SE   | SD   | SE   | SD   | SE   |
| Non-susceptible fraction           |                 |      |       |      |                  |      |        |      |              |      |      |      |      |      |
| $\beta_{s,0}$                      | 0.05            | 0.05 | 0.05  | 0.05 | 0.06             | 0.06 | 0.06   | 0.06 |              |      | 1.08 | 0.05 |      |      |
| $\beta_{s,x}$                      | 0.08            | 0.08 | 0.08  | 0.08 | 0.08             | 0.08 | 0.08   | 0.08 |              |      | 0.89 | 0.08 |      |      |
| Non-susceptible: 1 $\rightarrow$ 4 |                 |      |       |      |                  |      |        |      |              |      |      |      |      |      |
| $\log(\kappa_{14})$                | 0.24            | 0.24 | 0.16  | 0.14 | 0.33             | 0.33 | 0.17   | 0.15 |              |      |      |      |      |      |
| $\log(\alpha_{14})$                | 0.03            | 0.03 | 0.02  | 0.02 | 0.04             | 0.04 | 0.02   | 0.02 |              |      |      |      |      |      |
| $\beta_{14,x}$                     | 0.04            | 0.04 | 0.04  | 0.03 | 0.04             | 0.27 | 0.04   | 0.03 |              |      |      |      |      |      |
| Susceptible: 2 $\rightarrow$ 4     |                 |      |       |      |                  |      |        |      |              |      |      |      |      |      |
| $\log(\kappa_{24})$                | 0.22            | 0.22 | 0.25  | 0.26 | 0.26             | 0.80 | 0.24   | 0.24 | 0.11         | 0.10 |      |      |      |      |
| $\log(\alpha_{24})$                | 0.05            | 0.05 | 0.06  | 0.06 | 0.13             | 0.63 | 0.04   | 0.05 | 0.02         | 0.02 |      |      |      |      |
| $\beta_{24,x}$                     | 0.12            | 0.12 | 0.19  | 0.16 | 0.14             | 0.31 | 0.15   | 0.15 | 0.03         | 0.03 |      |      | 0.03 | 0.03 |
| Susceptible: 2 $\rightarrow$ 3     |                 |      |       |      |                  |      |        |      |              |      |      |      |      |      |
| $\log(\kappa_{23})$                | 0.18            | 0.17 | 0.18  | 0.17 | 0.08             | 0.73 | 0.08   | 0.07 | 0.05         | 0.06 | 0.21 | 0.07 |      |      |
| $\log(\alpha_{23})$                | 0.04            | 0.05 | 0.04  | 0.05 | 0.04             | 0.03 | 0.03   | 0.03 | 0.02         | 0.03 | 0.06 | 0.03 |      |      |
| $\beta_{23,x}$                     | 0.10            | 0.10 | 0.10  | 0.10 | 0.10             | 0.75 | 0.10   | 0.10 | 0.07         | 0.07 | 0.22 | 0.09 | 0.07 | 0.07 |
| Susceptible: 3 $\rightarrow$ 4     |                 |      |       |      |                  |      |        |      |              |      |      |      |      |      |
| $\log(\kappa_{34})$                | 0.19            | 0.19 | 0.17  | 0.17 | 0.20             | 0.86 | 0.17   | 0.17 | 0.19         | 0.19 |      |      |      |      |
| $\log(\alpha_{34})$                | 0.03            | 0.03 | 0.03  | 0.03 | 0.03             | 0.03 | 0.03   | 0.03 | 0.03         | 0.03 |      |      |      |      |
| $\beta_{34,x}$                     | 0.08            | 0.08 | 0.08  | 0.07 | 0.09             | 0.88 | 0.08   | 0.07 | 0.08         | 0.07 |      |      | 0.07 | 0.07 |
| log-frailty variance               |                 |      |       |      |                  |      |        |      |              |      |      |      |      |      |
| $\log(\theta)$                     | 0.16            | 0.16 |       |      | 0.92             | 0.19 |        |      | 1.02         | 0.54 |      |      |      |      |

Table E.14: Coverage probabilities, based on 2,000 simulated datasets of size  $n=5,000$  generated by increasing the non-susceptibility fraction from 46% to 76%.

|                          | FI-ID <sup>γ</sup> | FI-ID | Conlon <sup>γ</sup> | Conlon |
|--------------------------|--------------------|-------|---------------------|--------|
| Non-susceptible fraction |                    |       |                     |        |
| $\beta_{s,0}$            | 0.95               | 0.37  | 0.63                | 0.81   |
| $\beta_{s,x}$            | 0.95               | 0.93  | 0.93                | 0.90   |
| Non-susceptible: 1 → 4   |                    |       |                     |        |
| $\log(\kappa_{14})$      | 0.95               | 0.00  | 0.85                | 0.00   |
| $\log(\alpha_{14})$      | 0.95               | 0.00  | 0.85                | 0.00   |
| $\beta_{14,x}$           | 0.95               | 0.76  | 0.92                | 0.83   |
| Susceptible: 2 → 4       |                    |       |                     |        |
| $\log(\kappa_{24})$      | 0.94               | 0.96  | 0.95                | 0.92   |
| $\log(\alpha_{24})$      | 0.95               | 0.47  | 0.95                | 0.54   |
| $\beta_{24,x}$           | 0.95               | 0.79  | 0.95                | 0.90   |
| Susceptible: 2 → 3       |                    |       |                     |        |
| $\log(\kappa_{23})$      | 0.95               | 0.87  | 0.01                | 0.00   |
| $\log(\alpha_{23})$      | 0.95               | 0.93  | 0.43                | 0.49   |
| $\beta_{23,x}$           | 0.95               | 0.91  | 0.95                | 0.94   |
| Susceptible: 3 → 4       |                    |       |                     |        |
| $\log(\kappa_{34})$      | 0.95               | 0.12  | 0.94                | 0.12   |
| $\log(\alpha_{34})$      | 0.95               | 0.02  | 0.94                | 0.02   |
| $\beta_{34,x}$           | 0.95               | 0.93  | 0.95                | 0.93   |
| log-frailty variance     |                    |       |                     |        |
| $\log(\theta)$           | 0.96               |       | 0.91                |        |

## E.6 Truncated and standard Weibull distributions align on $(0, \tau)$

Table E.15: Mean point estimates, based on 2,000 simulated datasets of size  $n=5,000$  under the modification of  $\alpha_{23}$  and  $\kappa_{23}$  so that the hazard functions for the truncated and standard Weibull distributions are comparable on the interval  $(0, \tau)$ .

|                                    | Truth | FI-ID $^\gamma$ | FI-ID | Conlon $^\gamma$ | Conlon | ID $^\gamma$ | Cure  | MSM   |
|------------------------------------|-------|-----------------|-------|------------------|--------|--------------|-------|-------|
| Non-susceptible fraction           |       |                 |       |                  |        |              |       |       |
| $\beta_{s,0}$                      | -0.41 | -0.41           | -0.35 | -0.38            | -0.34  |              | 0.51  |       |
| $\beta_{s,x}$                      | 0.50  | 0.50            | 0.51  | 0.50             | 0.51   |              | 0.66  |       |
| Non-susceptible: 1 $\rightarrow$ 4 |       |                 |       |                  |        |              |       |       |
| $\log(\kappa_{14})$                | -8.52 | -8.51           | -7.28 | -8.22            | -7.21  |              |       |       |
| $\log(\alpha_{14})$                | 0.34  | 0.34            | 0.17  | 0.30             | 0.16   |              |       |       |
| $\beta_{14,x}$                     | 0.25  | 0.25            | 0.21  | 0.24             | 0.20   |              |       |       |
| Susceptible: 2 $\rightarrow$ 4     |       |                 |       |                  |        |              |       |       |
| $\log(\kappa_{24})$                | -5.30 | -5.30           | -5.08 | -5.29            | -5.04  | -6.05        |       |       |
| $\log(\alpha_{24})$                | 0.34  | 0.34            | 0.24  | 0.35             | 0.27   | 0.40         |       |       |
| $\beta_{24,x}$                     | 0.50  | 0.50            | 0.45  | 0.49             | 0.46   | 0.02         |       | 0.10  |
| Susceptible: 2 $\rightarrow$ 3     |       |                 |       |                  |        |              |       |       |
| $\log(\kappa_{23})$                | -7.13 | -7.14           | -6.70 | -7.17            | -6.78  | -4.49        | -6.18 |       |
| $\log(\alpha_{23})$                | 0.64  | 0.64            | 0.55  | 0.65             | 0.57   | -0.05        | 0.54  |       |
| $\beta_{23,x}$                     | 0.25  | 0.25            | 0.22  | 0.25             | 0.23   | -0.45        | 0.38  | -0.46 |
| Susceptible: 3 $\rightarrow$ 4     |       |                 |       |                  |        |              |       |       |
| $\log(\kappa_{34})$                | -6.21 | -6.23           | -5.70 | -6.16            | -5.70  | -7.73        |       |       |
| $\log(\alpha_{34})$                | 0.26  | 0.26            | 0.15  | 0.25             | 0.15   | 0.48         |       |       |
| $\beta_{34,x}$                     | 0.15  | 0.15            | 0.13  | 0.15             | 0.13   | -0.01        |       | 0.13  |
| log-frailty variance               |       |                 |       |                  |        |              |       |       |
| $\log(\theta)$                     | -1.71 | -1.73           |       | -1.90            |        | 0.58         |       |       |

Table E.16: Empirical and analytical standard errors calculated using the standard deviations of the sampling distributions and means of the estimated analytical standard errors, based on 2,000 simulated datasets of size  $n=5,000$  under the modification of  $\alpha_{23}$  and  $\kappa_{23}$  so that the hazard functions for the truncated and standard Weibull distributions are comparable on the interval  $(0, \tau)$ .

|                                    | FI-ID $^\gamma$ |      | FI-ID |      | Conlon $^\gamma$ |      | Conlon |      | ID $^\gamma$ |      | Cure |      | MSM  |      |
|------------------------------------|-----------------|------|-------|------|------------------|------|--------|------|--------------|------|------|------|------|------|
|                                    | SD              | SE   | SD    | SE   | SD               | SE   | SD     | SE   | SD           | SE   | SD   | SE   | SD   | SE   |
| Non-susceptible fraction           |                 |      |       |      |                  |      |        |      |              |      |      |      |      |      |
| $\beta_{s,0}$                      | 0.05            | 0.05 | 0.05  | 0.05 | 0.05             | 0.05 | 0.05   | 0.05 |              |      | 0.05 | 0.05 |      |      |
| $\beta_{s,x}$                      | 0.06            | 0.06 | 0.06  | 0.06 | 0.06             | 0.06 | 0.06   | 0.06 |              |      | 0.07 | 0.07 |      |      |
| Non-susceptible: 1 $\rightarrow$ 4 |                 |      |       |      |                  |      |        |      |              |      |      |      |      |      |
| $\log(\kappa_{14})$                | 0.27            | 0.27 | 0.20  | 0.19 | 0.26             | 0.26 | 0.20   | 0.19 |              |      |      |      |      |      |
| $\log(\alpha_{14})$                | 0.03            | 0.03 | 0.03  | 0.02 | 0.03             | 0.03 | 0.03   | 0.02 |              |      |      |      |      |      |
| $\beta_{14,x}$                     | 0.05            | 0.05 | 0.05  | 0.04 | 0.05             | 0.05 | 0.05   | 0.04 |              |      |      |      |      |      |
| Susceptible: 2 $\rightarrow$ 4     |                 |      |       |      |                  |      |        |      |              |      |      |      |      |      |
| $\log(\kappa_{24})$                | 0.13            | 0.12 | 0.10  | 0.11 | 0.12             | 0.12 | 0.11   | 0.11 | 0.25         | 0.16 |      |      |      |      |
| $\log(\alpha_{24})$                | 0.03            | 0.03 | 0.03  | 0.03 | 0.02             | 0.02 | 0.02   | 0.02 | 0.06         | 0.04 |      |      |      |      |
| $\beta_{24,x}$                     | 0.06            | 0.06 | 0.06  | 0.06 | 0.06             | 0.06 | 0.06   | 0.06 | 0.08         | 0.07 |      |      | 0.03 | 0.03 |
| Susceptible: 2 $\rightarrow$ 3     |                 |      |       |      |                  |      |        |      |              |      |      |      |      |      |
| $\log(\kappa_{23})$                | 0.18            | 0.17 | 0.15  | 0.16 | 0.17             | 0.17 | 0.15   | 0.15 | 0.17         | 0.13 | 0.15 | 0.15 |      |      |
| $\log(\alpha_{23})$                | 0.03            | 0.03 | 0.03  | 0.03 | 0.03             | 0.03 | 0.02   | 0.02 | 0.07         | 0.04 | 0.02 | 0.02 |      |      |
| $\beta_{23,x}$                     | 0.07            | 0.08 | 0.07  | 0.07 | 0.07             | 0.07 | 0.07   | 0.07 | 0.08         | 0.08 | 0.07 | 0.06 | 0.06 | 0.06 |
| Susceptible: 3 $\rightarrow$ 4     |                 |      |       |      |                  |      |        |      |              |      |      |      |      |      |
| $\log(\kappa_{34})$                | 0.16            | 0.16 | 0.14  | 0.14 | 0.16             | 0.16 | 0.14   | 0.14 | 0.21         | 0.19 |      |      |      |      |
| $\log(\alpha_{34})$                | 0.02            | 0.02 | 0.02  | 0.02 | 0.02             | 0.03 | 0.02   | 0.02 | 0.03         | 0.02 |      |      |      |      |
| $\beta_{34,x}$                     | 0.07            | 0.07 | 0.07  | 0.06 | 0.07             | 0.07 | 0.07   | 0.06 | 0.10         | 0.09 |      |      | 0.06 | 0.06 |
| log-frailty variance               |                 |      |       |      |                  |      |        |      |              |      |      |      |      |      |
| $\log(\theta)$                     | 0.13            | 0.13 |       |      | 0.15             | 0.16 |        |      | 0.11         | 0.07 |      |      |      |      |

Table E.17: Coverage probabilities, based on 2,000 simulated datasets of size  $n=5,000$  under the modification of  $\alpha_{23}$  and  $\kappa_{23}$  so that the hazard functions for the truncated and standard Weibull distributions are comparable on the interval  $(0, \tau)$ .

|                                    | FI-ID $^\gamma$ | FI-ID | Conlon $^\gamma$ | Conlon |
|------------------------------------|-----------------|-------|------------------|--------|
| Non-susceptible fraction           |                 |       |                  |        |
| $\beta_{s,0}$                      | 0.95            | 0.78  | 0.91             | 0.70   |
| $\beta_{s,x}$                      | 0.95            | 0.95  | 0.95             | 0.95   |
| Non-susceptible: 1 $\rightarrow$ 4 |                 |       |                  |        |
| $\log(\kappa_{14})$                | 0.95            | 0.00  | 0.79             | 0.00   |
| $\log(\alpha_{14})$                | 0.95            | 0.00  | 0.79             | 0.00   |
| $\beta_{14,x}$                     | 0.95            | 0.82  | 0.94             | 0.80   |
| Susceptible: 2 $\rightarrow$ 4     |                 |       |                  |        |
| $\log(\kappa_{24})$                | 0.94            | 0.46  | 0.95             | 0.35   |
| $\log(\alpha_{24})$                | 0.94            | 0.02  | 0.92             | 0.12   |
| $\beta_{24,x}$                     | 0.95            | 0.81  | 0.95             | 0.88   |
| Susceptible: 2 $\rightarrow$ 3     |                 |       |                  |        |
| $\log(\kappa_{23})$                | 0.95            | 0.22  | 0.94             | 0.37   |
| $\log(\alpha_{23})$                | 0.95            | 0.04  | 0.94             | 0.15   |
| $\beta_{23,x}$                     | 0.96            | 0.92  | 0.96             | 0.94   |
| Susceptible: 3 $\rightarrow$ 4     |                 |       |                  |        |
| $\log(\kappa_{34})$                | 0.95            | 0.06  | 0.94             | 0.06   |
| $\log(\alpha_{34})$                | 0.95            | 0.00  | 0.93             | 0.00   |
| $\beta_{34,x}$                     | 0.95            | 0.91  | 0.95             | 0.91   |
| log-frailty variance               |                 |       |                  |        |
| $\log(\theta)$                     | 0.95            |       | 0.84             |        |

## E.7 Baseline scenario without frailty, i.e. Gamma frailty variance equal to zero

Table E.18: Mean point estimates, based on 2,000 simulated datasets of size  $n=5,000$  under the modification of no frailty.

|                                    | Truth | FI-ID | Conlon | ID    | Cure  | MSM   |
|------------------------------------|-------|-------|--------|-------|-------|-------|
| Non-susceptible fraction           |       |       |        |       |       |       |
| $\beta_{s,0}$                      | -0.41 | -0.41 | -0.46  |       | 0.18  |       |
| $\beta_{s,x}$                      | 0.50  | 0.50  | 0.52   |       | 0.45  |       |
| Non-susceptible: 1 $\rightarrow$ 4 |       |       |        |       |       |       |
| $\log(\kappa_{14})$                | -8.52 | -8.53 | -8.84  |       |       |       |
| $\log(\alpha_{14})$                | 0.34  | 0.34  | 0.37   |       |       |       |
| $\beta_{14,x}$                     | 0.25  | 0.25  | 0.27   |       |       |       |
| Susceptible: 2 $\rightarrow$ 4     |       |       |        |       |       |       |
| $\log(\kappa_{24})$                | -5.30 | -5.31 | -5.26  | -4.92 |       |       |
| $\log(\alpha_{24})$                | 0.34  | 0.34  | 0.33   | -0.13 |       |       |
| $\beta_{24,x}$                     | 0.50  | 0.50  | 0.50   | 0.06  |       | 0.10  |
| Susceptible: 2 $\rightarrow$ 3     |       |       |        |       |       |       |
| $\log(\kappa_{23})$                | -2.16 | -2.16 | -1.77  | -1.97 | -1.47 |       |
| $\log(\alpha_{23})$                | -0.69 | -0.69 | -0.60  | -1.32 | -0.51 |       |
| $\beta_{23,x}$                     | 0.25  | 0.25  | 0.23   | -0.28 | 0.35  | -0.25 |
| Susceptible: 3 $\rightarrow$ 4     |       |       |        |       |       |       |
| $\log(\kappa_{34})$                | -6.21 | -6.22 | -6.22  | -6.22 |       |       |
| $\log(\alpha_{34})$                | 0.26  | 0.26  | 0.26   | 0.26  |       |       |
| $\beta_{34,x}$                     | 0.15  | 0.15  | 0.15   | 0.15  |       | 0.17  |

Table E.19: Empirical and analytical standard errors calculated using the standard deviations of the sampling distributions and means of the estimated analytical standard errors, based on 2,000 simulated datasets of size  $n=5,000$  under the modification of no frailty.

|                                    | FI-ID |      | Conlon |      | ID   |      | Cure |      | MSM  |      |
|------------------------------------|-------|------|--------|------|------|------|------|------|------|------|
|                                    | SD    | SE   | SD     | SE   | SD   | SE   | SD   | SE   | SD   | SE   |
| Non-susceptible fraction           |       |      |        |      |      |      |      |      |      |      |
| $\beta_{s,0}$                      | 0.05  | 0.04 | 0.05   | 0.05 |      |      | 0.05 | 0.05 |      |      |
| $\beta_{s,x}$                      | 0.06  | 0.06 | 0.06   | 0.06 |      |      | 0.06 | 0.06 |      |      |
| Non-susceptible: 1 $\rightarrow$ 4 |       |      |        |      |      |      |      |      |      |      |
| $\log(\kappa_{14})$                | 0.21  | 0.20 | 0.22   | 0.22 |      |      |      |      |      |      |
| $\log(\alpha_{14})$                | 0.02  | 0.02 | 0.02   | 0.02 |      |      |      |      |      |      |
| $\beta_{14,x}$                     | 0.04  | 0.04 | 0.05   | 0.04 |      |      |      |      |      |      |
| Susceptible: 2 $\rightarrow$ 4     |       |      |        |      |      |      |      |      |      |      |
| $\log(\kappa_{24})$                | 0.13  | 0.14 | 0.13   | 0.13 | 0.08 | 0.08 |      |      |      |      |
| $\log(\alpha_{24})$                | 0.03  | 0.03 | 0.02   | 0.03 | 0.01 | 0.01 |      |      |      |      |
| $\beta_{24,x}$                     | 0.08  | 0.08 | 0.08   | 0.08 | 0.03 | 0.04 |      |      | 0.04 | 0.04 |
| Susceptible: 2 $\rightarrow$ 3     |       |      |        |      |      |      |      |      |      |      |
| $\log(\kappa_{23})$                | 0.10  | 0.10 | 0.05   | 0.05 | 0.03 | 0.04 | 0.05 | 0.05 |      |      |
| $\log(\alpha_{23})$                | 0.03  | 0.03 | 0.02   | 0.02 | 0.01 | 0.02 | 0.02 | 0.02 |      |      |
| $\beta_{23,x}$                     | 0.05  | 0.05 | 0.05   | 0.05 | 0.05 | 0.05 | 0.05 | 0.06 | 0.05 | 0.05 |
| Susceptible: 3 $\rightarrow$ 4     |       |      |        |      |      |      |      |      |      |      |
| $\log(\kappa_{34})$                | 0.12  | 0.12 | 0.12   | 0.12 | 0.12 | 0.12 |      |      |      |      |
| $\log(\alpha_{34})$                | 0.02  | 0.02 | 0.02   | 0.02 | 0.02 | 0.02 |      |      |      |      |
| $\beta_{34,x}$                     | 0.05  | 0.05 | 0.05   | 0.05 | 0.05 | 0.05 |      |      | 0.05 | 0.05 |

Table E.20: Coverage probabilities, based on 2,000 simulated datasets of size  $n=5,000$  under the modification of no frailty.

|                                    | FI-ID | Conlon |
|------------------------------------|-------|--------|
| Non-susceptible fraction           |       |        |
| $\beta_{s,0}$                      | 0.95  | 0.78   |
| $\beta_{s,x}$                      | 0.95  | 0.94   |
| Non-susceptible: 1 $\rightarrow$ 4 |       |        |
| $\log(\kappa_{14})$                | 0.94  | 0.71   |
| $\log(\alpha_{14})$                | 0.94  | 0.71   |
| $\beta_{14,x}$                     | 0.95  | 0.93   |
| Susceptible: 2 $\rightarrow$ 4     |       |        |
| $\log(\kappa_{24})$                | 0.96  | 0.95   |
| $\log(\alpha_{24})$                | 0.95  | 0.95   |
| $\beta_{24,x}$                     | 0.95  | 0.95   |
| Susceptible: 2 $\rightarrow$ 3     |       |        |
| $\log(\kappa_{23})$                | 0.95  | 0      |
| $\log(\alpha_{23})$                | 0.96  | 0.01   |
| $\beta_{23,x}$                     | 0.95  | 0.93   |
| Susceptible: 3 $\rightarrow$ 4     |       |        |
| $\log(\kappa_{34})$                | 0.96  | 0.96   |
| $\log(\alpha_{34})$                | 0.96  | 0.96   |
| $\beta_{34,x}$                     | 0.94  | 0.94   |

## F Additional results from the analysis of stem cell transplantation data

Table F.1: Distribution of events for CIBMTR HCT data ( $n=9,651$ )

|  | $n$  | %    |
|--|------|------|
| Acute GVHD, death within 100 days of transplantation     | 502  | 5.2  |
| Acute GVHD, death 100 days post-transplantation          | 556  | 5.8  |
| Acute GVHD, censored before 100 days                     | 1    | 0.0  |
| Acute GVHD, censored after 100 days post-transplantation | 643  | 6.7  |
| Death within 100 days without acute GVHD                 | 983  | 10.2 |
| Death after 100 days, without acute GVHD                 | 1786 | 18.5 |
| Censored after 100 days, without either                  | 5159 | 53.5 |
| Censored within 100 days, without either                 | 21   | 0.2  |

Table F.2: Estimates and standard errors for Weibull parameters from analyses of the CIBMTR HCT data ( $n=9,651$ ) including: the proposed finite interval illness-death model with frailty (FI-ID $^\gamma$ ); the cure fraction illness-death model of Conlon et al. (2014) with an additional frailty (Conlon $^\gamma$ ); the illness-death model with frailty (ID $^\gamma$ ); and the cure fraction model for acute GVHD.

|                     | FI-ID $^\gamma$ |      | Conlon $^\gamma$ |      | ID $^\gamma$ |      | Cure  |      |
|---------------------|-----------------|------|------------------|------|--------------|------|-------|------|
|                     | Est             | SE   | Est              | SE   | Est          | SE   | Est   | SE   |
| Weibull parameters  |                 |      |                  |      |              |      |       |      |
| $\log(\kappa_{14})$ | -7.98           | 0.18 | -7.56            | 0.17 |              |      |       |      |
| $\log(\alpha_{14})$ | 0.14            | 0.03 | 0.08             | 0.03 |              |      |       |      |
| $\log(\kappa_{24})$ | -16.16          | 0.03 | -11.76           | 0.95 | -7.43        | 0.17 |       |      |
| $\log(\alpha_{24})$ | 0.80            | 0.02 | 0.73             | 0.08 | 0.32         | 0.03 |       |      |
| $\log(\kappa_{23})$ | -6.83           | 0.18 | -6.58            | 0.18 | -14.14       | 0.27 | -5.93 | 0.13 |
| $\log(\alpha_{23})$ | 0.66            | 0.02 | 0.62             | 0.03 | 1.05         | 0.02 | 0.48  | 0.02 |
| $\log(\kappa_{34})$ | -5.44           | 0.16 | -5.33            | 0.15 | -7.91        | 0.19 |       |      |
| $\log(\alpha_{34})$ | -0.10           | 0.03 | -0.13            | 0.03 | 0.07         | 0.03 |       |      |

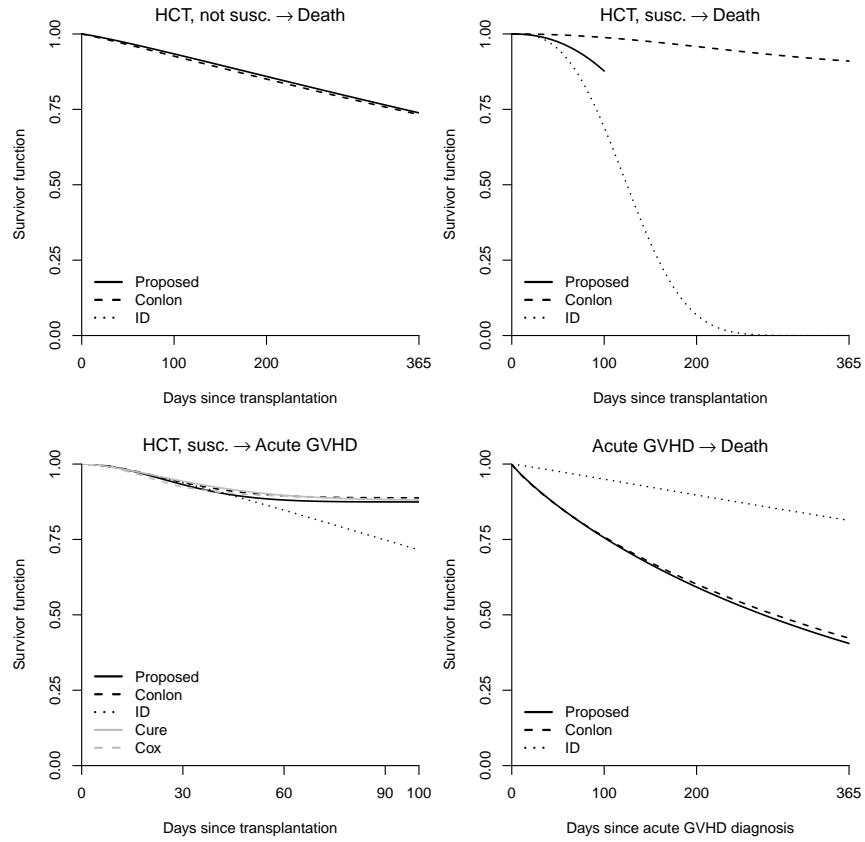


Figure F.1: Estimated baseline survivor functions from the CIBMTR HCT data for four transitions, based on: the proposed finite interval illness-death model with frailty (FI-ID $\gamma$ ); the cure fraction illness-death model of Conlon et al. (2014) with an additional frailty (Conlon $\gamma$ ); the illness-death model with frailty (ID $\gamma$ ); the cure fraction model for acute GVHD; and the Cox model for acute GVHD. The marginal baseline survivor functions (with respect to the frailty,  $\gamma$ ) are shown for models FI-ID $\gamma$  and Conlon $\gamma$  for the ‘HCT, susc.  $\rightarrow$  Death’ and ‘HCT, susc.  $\rightarrow$  Acute GVHD’ transitions.



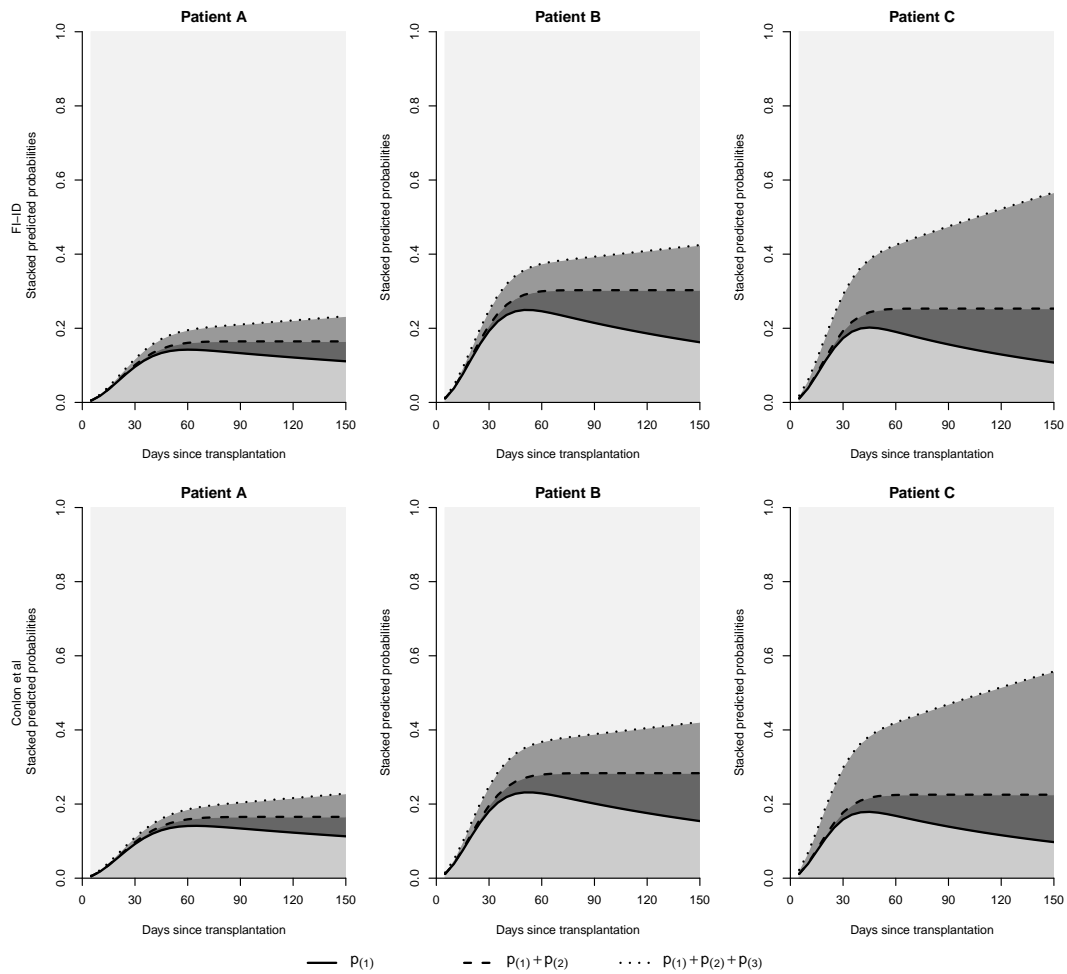


Figure F.2: Estimated absolute risk profiles calculated for the first 150 post-transplantation corresponding to three patients (A, B, C) based on proposed finite-interval illness-death model with frailty (FI-ID<sup>γ</sup>) in the first row, and the cure fraction illness-death model of Conlon et al. (2014) with an additional frailty (Conlon<sup>γ</sup>) in the second row.



## G Sample R code

All statistical analyses were conducted in R [4]. In our implementation of the proposed finite interval illness-death model with both Weibull or truncated Weibull baseline hazard functions as well as B-spline parameterizations, separately, we make use of the `optim` function in the `stats` package for quasi-Newton non-linear optimization of the log-likelihood. To obtain starting values for the non-linear optimization, for the proposed model with Weibull and truncated Weibull baseline hazard, we utilized: the `weibreg` function in the `eha` package for univariate Weibull regression [5]; and `FreqID_HReg` function in the `SemiCompRisks` package [6] to fit an illness-death model with shared frailty. For the proposed model with B-spline parameterized baseline hazard functions, we used: the `bSpline` function in the `splines2` package [7]; the `coxph` function in the `survival` package [8]; and the `numdiff` function in the `pracma` [9] package for numerical differentiation.

We provide R script and functions to run the proposed finite interval illness-death model with Weibull and truncated Weibull and B-spline baseline hazard parameterizations; please see files: `sim-script-SemiCompRisksv3_1.R` and `sim-functions-SemiCompRisksv3_1.R`.

## References

- [1] Xu J, Kalbfleisch J and Tai B. Statistical analysis of illness-death processes and semicompeting risks data. *Biometrics* 2010; 66(3): 716–725.
- [2] Lee KH, Dominici F, Schrag D et al. Hierarchical models for semicompeting risks data with application to quality of end-of-life care for pancreatic cancer. *Journal of the American Statistical Association* 2016; 111(515): 1075–1095.
- [3] Putter H, Fiocco M and Geskus R. Tutorial in biostatistics: competing risks and multi-state models. *Stat Med* 2007; 26(11): 2389–2430.
- [4] R Core Team. R: A language and environment for statistical computing, 2017. URL <https://www.R-project.org/>.
- [5] Brostrom G. eha: Event history analysis, 2016. URL <http://CRAN.R-project.org/package=eha>. R package version 2.4-4.
- [6] Lee K, Lee C, Alvares D et al. SemiCompRisks: Hierarchical models for parametric and semi-parametric analyses of semi-competing risks data, 2019. URL <http://CRAN.R-project.org/package=SemiCompRisks>. R package version 3.3.
- [7] Wenjie W and Jun Y. *splines2: Regression Spline Functions and Classes Too*, 2017. URL <https://CRAN.R-project.org/package=splines2>. R package version 0.2.5.
- [8] Therneau T. *A Package for Survival Analysis in S*, 2015. URL <https://CRAN.R-project.org/package=survival>. R package version 2.38.
- [9] Borchers H. *pracma: Practical Numerical Math Functions*, 2019. URL <https://CRAN.R-project.org/package=pracma>. R package version 2.2.5.