

Appendix Table A1: Association of Concussions with Previous Injury History

| | Controls | Single Concussion | Multiple Concussions | p-value |
|------------------------------------|----------|-------------------|----------------------|---------|
| Athletes with Previous LE Injuries | 22 | 25 | 31 | 0.172 |
| Number of Previous LE Injuries | 47 | 67 | 45 | 0.896 |

* *P-values were calculated using chi-square and ANOVA.*

LE: Lower extremity

Appendix Table A2: Odds of Sustaining Lower Extremity Injury After Concussion 2

| | 90 Days | | 365 Days | | Entire Study | |
|--------------------------------|---------|---------|----------|---------|--------------|---------|
| | OR | p-value | OR | p-value | OR | p-value |
| Single vs No Concussions | 1.000 | 1.000 | 1.100 | 0.827 | 0.920 | 0.838 |
| Multiple vs No Concussions | 1.599 | 0.108 | 1.308 | 0.208 | 0.959 | 0.838 |
| Multiple vs Single Concussions | 2.557 | 0.108 | 1.556 | 0.296 | 1.000 | 1.000 |

* Odds ratios and p-values calculated using univariate logistic regression.

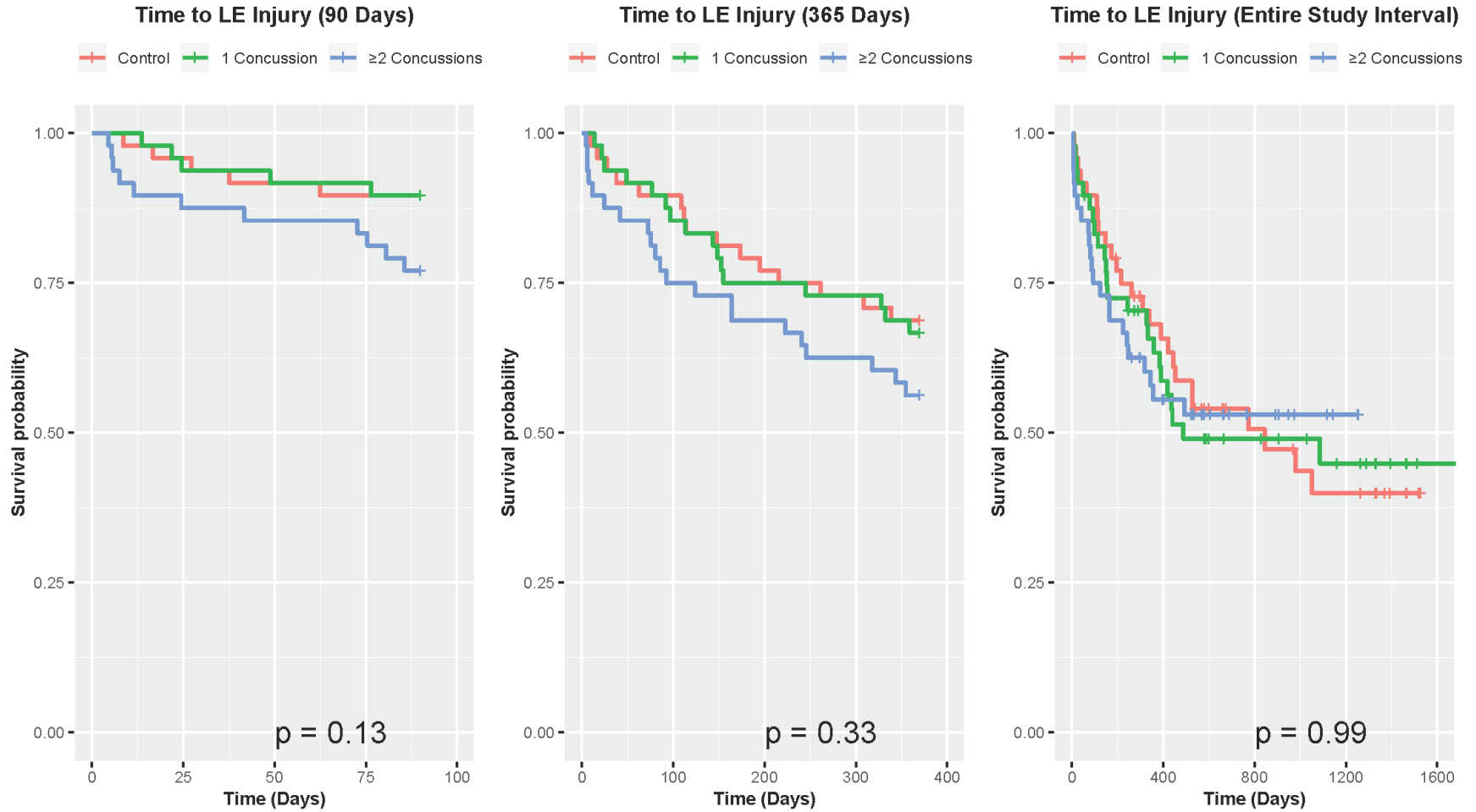
OR: Odds ratio

Appendix Table A3: Cox-Proportional Hazards Model for Previous Lower Extremity Injury

| | | 90 Days | | 365 Days | | Entire Study | |
|----------------|--------------------------------|---------|---------|--------------|--------------|--------------|--------------|
| | | HR | p-value | HR | p-value | HR | p-value |
| Model 1 | | | | | | | |
| | Previous LE Injury | 1.123 | 0.803 | 1.711 | 0.052 | 1.566 | 0.049 |
| | Number of Concussions | 1.512 | 0.154 | 1.502 | 0.015 | 1.353 | 0.029 |
| Model 2 | | | | | | | |
| | Number of Previous LE Injuries | 0.980 | 0.895 | 1.077 | 0.318 | 1.074 | 0.297 |
| | Number of Concussions | 1.528 | 0.138 | 1.591 | 0.006 | 1.425 | 0.010 |

**Bolded values indicate statistical significance at $p < 0.05$*

HR: Hazard ratio; **LE:** Lower Extremity



Appendix Figure A1. Time to lower extremity injury beginning from return to play from concussion #2.