

Supplementary figures and tables

A Composition of immigrant GPs in Norway, 2002-2016

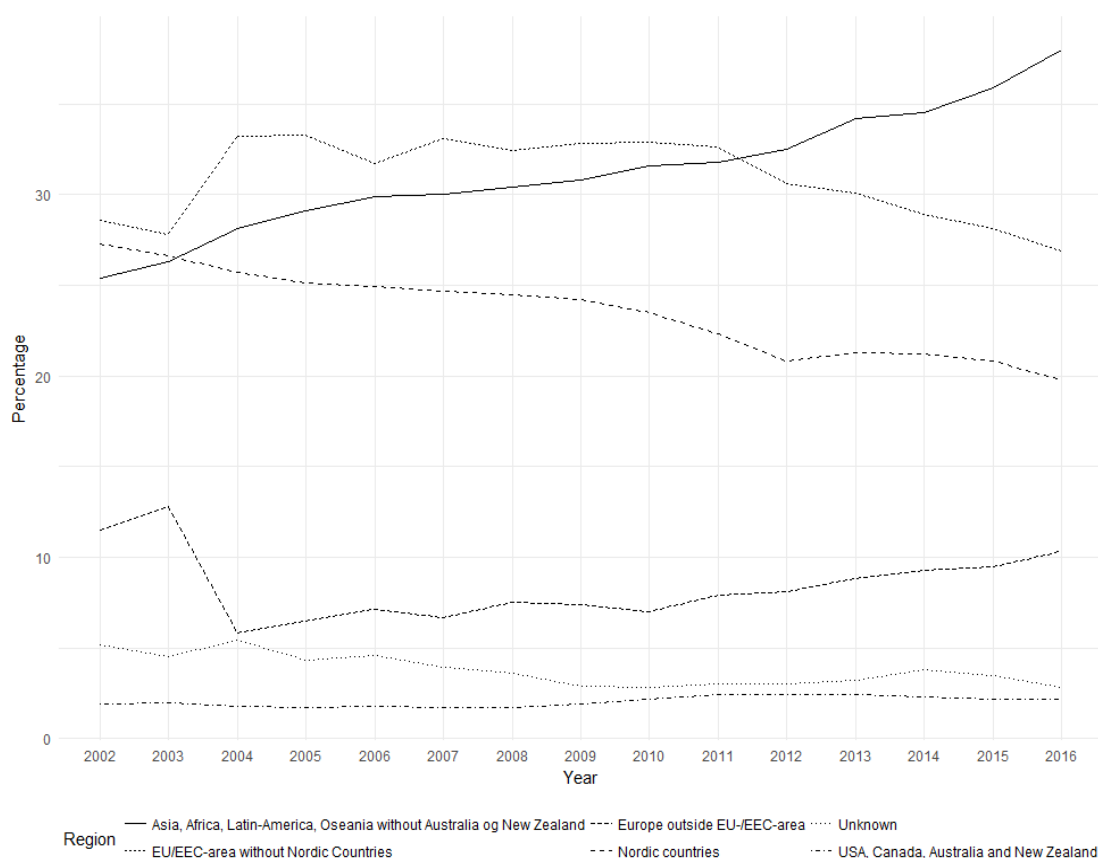


Figure 1: Share of immigrant GPs by region of origin, 2002-2016, data from Statistics Norway. Source: <https://data.ssb.no/api/v0/no/table/07386/>

B Occupations included in the survey

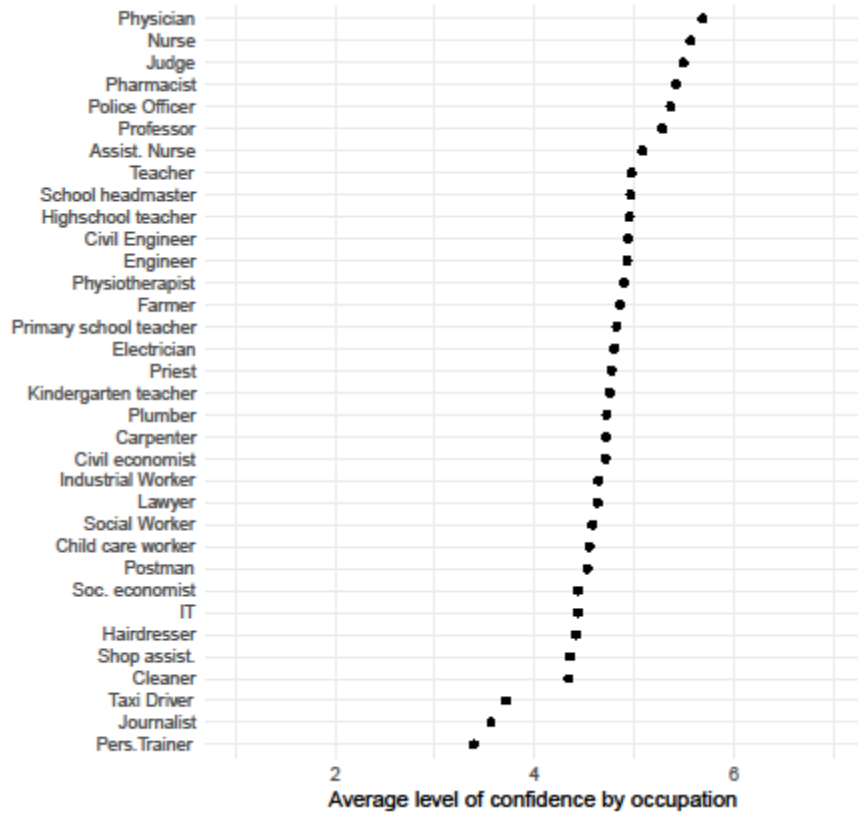


Figure 2: Average level of confidence for occupations included in the survey. (N=4006)

C Mean scores per group for each treatment

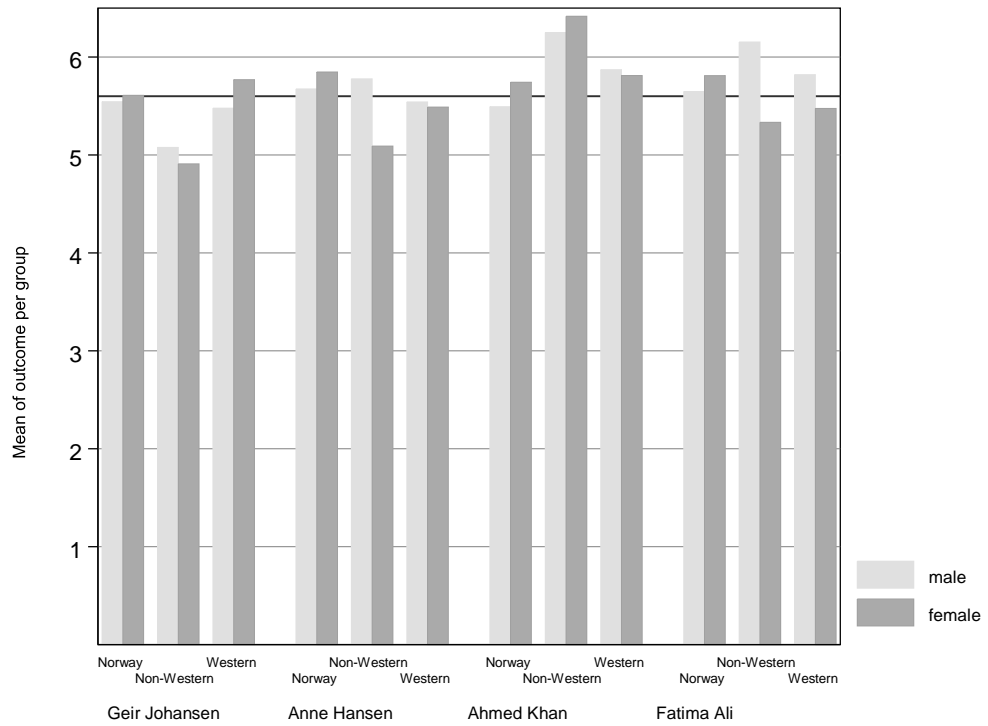


Figure 3: Mean scores for each subgroup on the outcome variable. The thick black line indicates the mean for the entire sample.

D Regression table with all coefficients.

Table 1: Regression results of treatments upon confidence in GPs. Standard errors in parentheses.

	Confidence in GP	
	(1)	(2)
Anne	0.168*** (0.054)	0.168*** (0.054)
Ahm	0.076 (0.053)	0.070 (0.053)
ed	0.154*** (0.053)	0.160*** (0.053)
Highschool		0.099 (0.062)
Higher		0.266*** (0.068)
education Self-		-0.255** (0.111)
employed		-0.337*** (0.073)
Unemployed		0.341*** (0.091)
Student		-0.076 (0.065)
Income 20.000 - 29.999		0.072 (0.082)
Income 30.000 - 39.999		0.019 (0.080)
Income 40.000 - 49.999		0.008 (0.082)
Income 50.000 - 59.999		-0.095 (0.089)
Income 60.000 - 69.999		-0.162 (0.105)
Income 70.000 - 79.999		0.032 (0.121)
Income 80.000 - 99.999		-0.118 (0.124)
Income Over		-0.065 (0.137)
100.000 Income:		-0.267*** (0.091)
Less central municipality		0.010 (0.115)
Somewhat central		0.084 (0.091)
Most central		0.080 (0.084)
Unknow		0.304 (0.331)
Agcohort		0.058*** (0.018)
Constant	5.567*** (0.039)	5.224*** (0.149)
Fixed effects?	No	Yes: County
Observations	3,857	3,828
R ²	0.003	0.035
Adjusted R ²	0.002	0.024
Residual Std.	1.158 (df = 3853)	1.144 (df = 3786)
Error F Statistic	4.178*** (df = 3; 3853)	3.313*** (df = 41; 3786)

Note:

*p<0.1; **p<0.05; ***p<0.01

Reference levels omitted.

E Predicted levels of confidence by gender

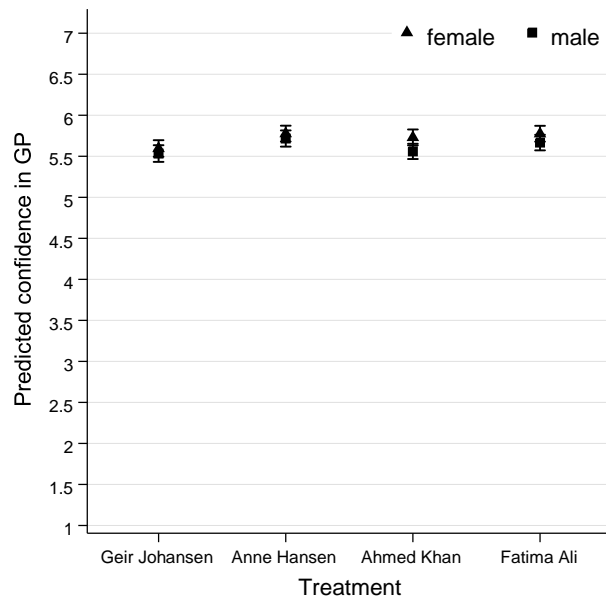


Figure 4: Predicted levels of confidence for all treatments with symmetrical 95% confidence intervals estimated from the model with controls. Baseline category: Geir

The results show no significant difference between female and male respondents in terms of their average trust in the assigned GPs.

F Predicted levels of confidence by ethnicity

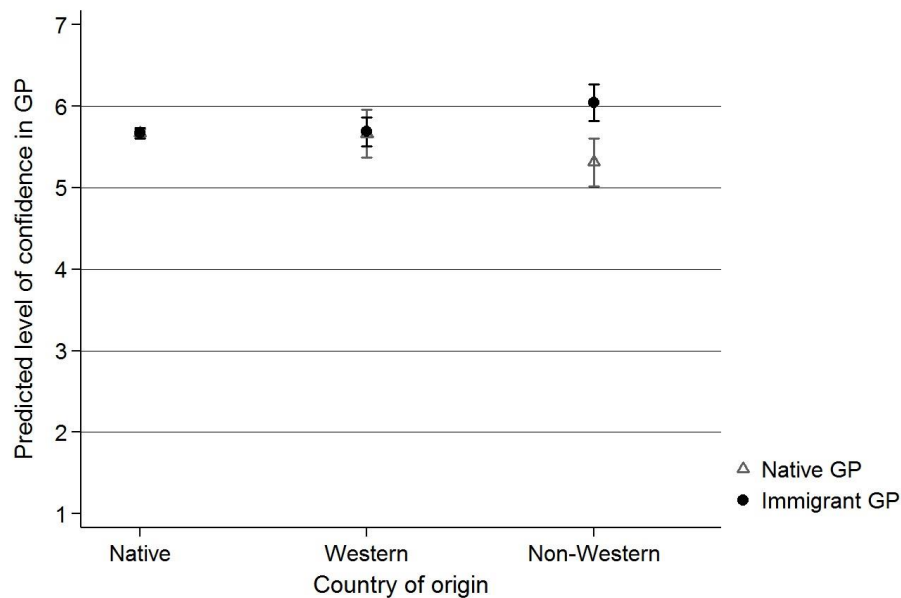


Figure 5: Predicted level of confidence in general practitioners for Norwegians, Western and non-Western immigrants with 95% confidence intervals.

The results show that on Norwegians have on average comparable levels of trust in immigrant/Non-Western GP compared to native GPs. The Western group of respondents are equally trustworthy of non-Western (Fatima and Ahmed) and Norwegian GPs (Anne and Geir). The non-Western group has on average significantly more trust in Non-Western GPs, compared to Norwegian GPs.

G Interaction between treatments and region of origin with Geir and Non-Western immigrants as reference categories.

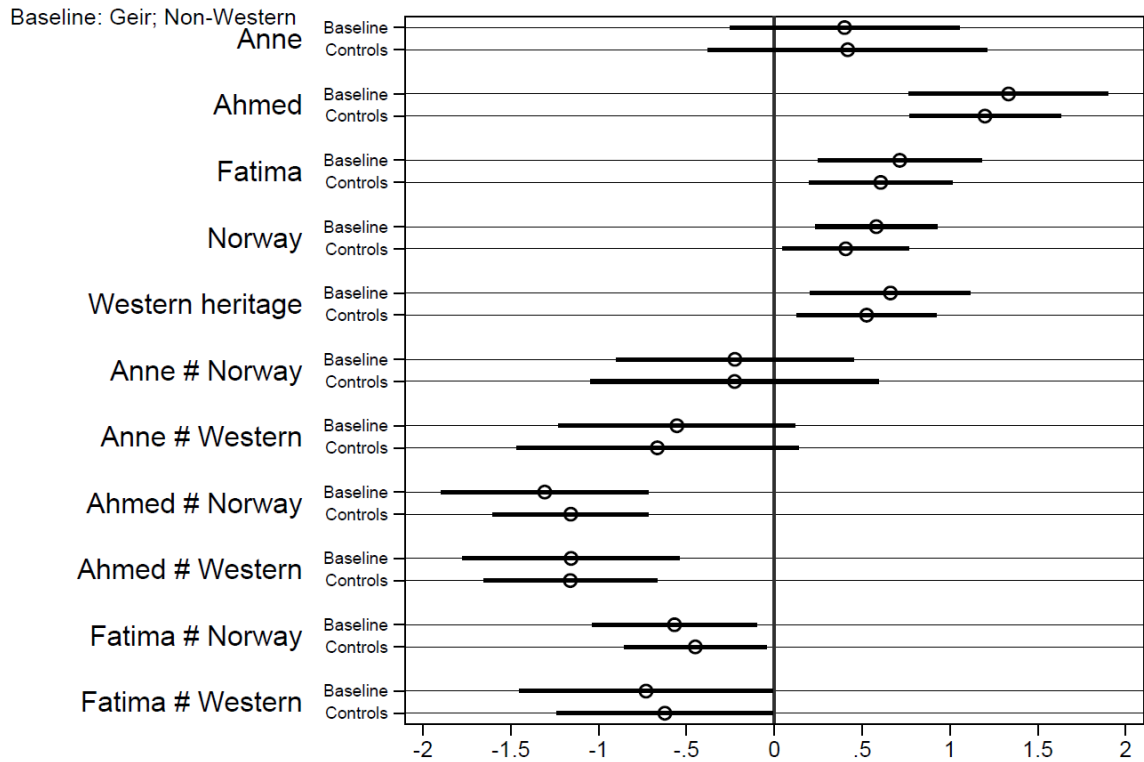


Figure 6: Coefficients with 95% confidence interval based on model with Geir and Non-Western heritage as baseline (analogous to Main Text Table 2, model 5).

Figure 6 illustrates the interaction between the treatments and the geographic origin of the respondents. The reference category in Figure 6 is composed of Non-Western respondents who were allocated Geir (Norwegian GP). The findings illustrate that, non-Western immigrants have, on average, more trust in Ahmed and Fatima, than Geir. However, respondents with a non-Western background do not significantly trust Anne more than Geir.

H Post-treatment trust in GPs

Table 2: Regression results with the post-treatment trust in GPs.

	Post-treatment trust in GPs				
	Model 1	Model 2	Model 3	Model 4	Model 5
Anne	0.045 (0.055)	0.035 (0.055)	0.061 (0.078)	0.061 (0.058)	0.083* (0.048)
Ahmed	0.041 (0.054)	0.037 (0.054)	-0.009 (0.075)	0.059 (0.057)	0.068 (0.047)
Fatima	-0.006 (0.054)	-0.013 (0.054)	-0.009 (0.076)	0.015 (0.057)	0.018 (0.047)
Female		-0.018 (0.041)	-0.005 (0.079)	0.014 (0.038)	-0.107*** (0.034)
Non-Western		-0.235* (0.123)	-0.212* (0.122)	-0.239 (0.242)	-0.066 (0.200)
Western		0.115 (0.074)	0.114 (0.073)	0.328** (0.154)	0.339*** (0.128)
Anne:female			-0.032 (0.110)		
Ahmed:female			0.104 (0.108)		
Fatima:female			0.006 (0.108)		
Trust in doctors					0.637*** (0.015)
Anne: Non-Western				-0.339 (0.358)	-0.201 (0.294)
Ahmed: Non-Western				0.010 (0.349)	-0.018 (0.287)
Fatima: Non-Western				0.317 (0.328)	0.270 (0.270)
Anne: Western				-0.141 (0.214)	-0.245 (0.177)
Ahmed: Western				-0.256 (0.213)	-0.341* (0.177)
Fatima: Western				-0.407** (0.205)	-0.383** (0.171)
Constant	5.056*** (0.039)	5.058*** (0.116)	5.056*** (0.056)	5.033*** (0.045)	1.375*** (0.146)
Fixed effects?	No	No	No	Yes	
N	3967	3953	3967	3967	3933
R-squared	0.01	0.01	0.01	0.01	0.34

*** p < .01; ** p < .05; * p < .1

I Descriptive table across assigned case mean values

Table 3: Descriptive table across assigned case mean values (standard deviation in parentheses). T-test results ($p < 0.05$) in relationship to Geir.

Treatment	Trust Score	Male	Education	Immigrant	% sample receiving treat.	Don't know %
Geir	5.57	0.50	1.90	0.10	23	0.5
Lehmann	(1.06)	(0.50)	(1.21)	(0.30)		
Anne Hansen	5.74*	0.49	1.87	0.10	24	0.9
	(1.01)	(0.50)	(1.21)	(0.29)		
Ahmed Khan	5.64	0.52	1.83	0.09	25	0.7
	(1.29)	(0.50)	(1.22)	(0.28)		
Fatima Ali	5.72*	0.50	1.85	0.11	25	0.8
	(1.22)	(0.50)	(1.20)	(0.31)		

* $p < 0.05$