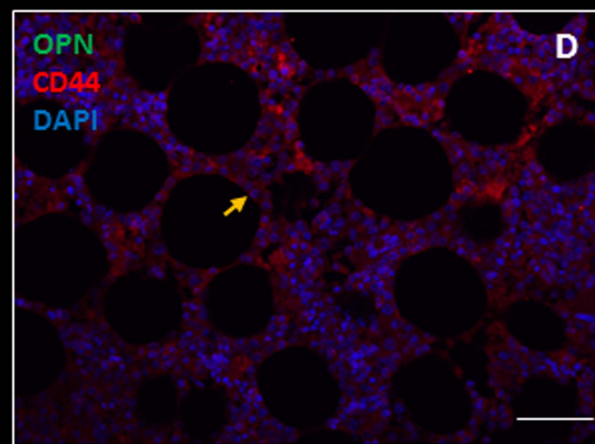
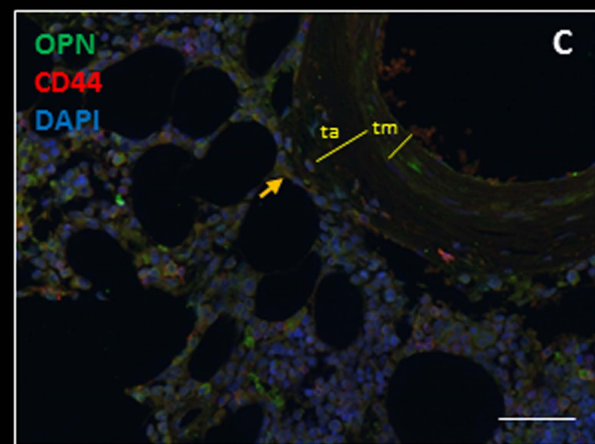
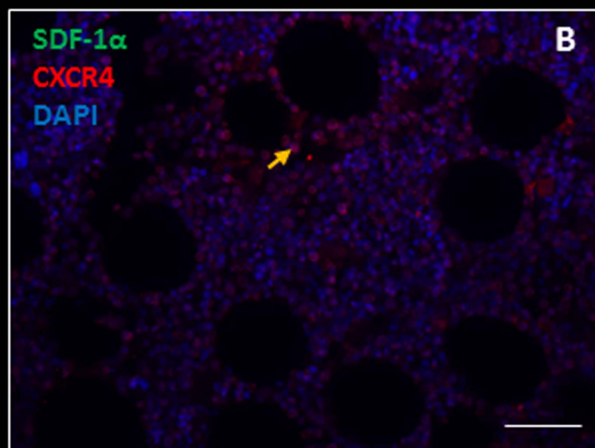
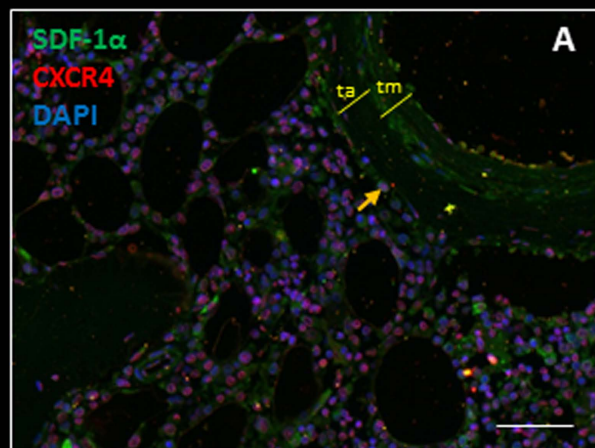
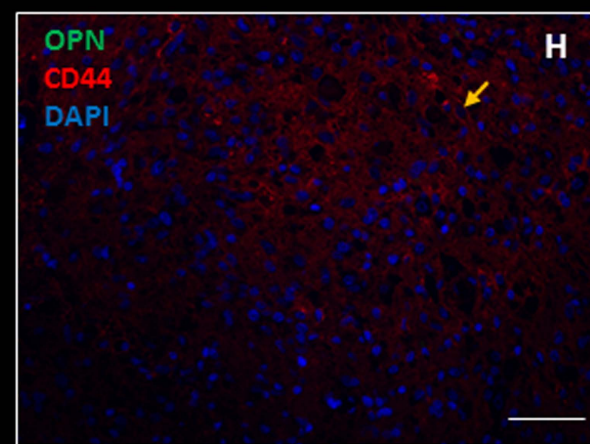
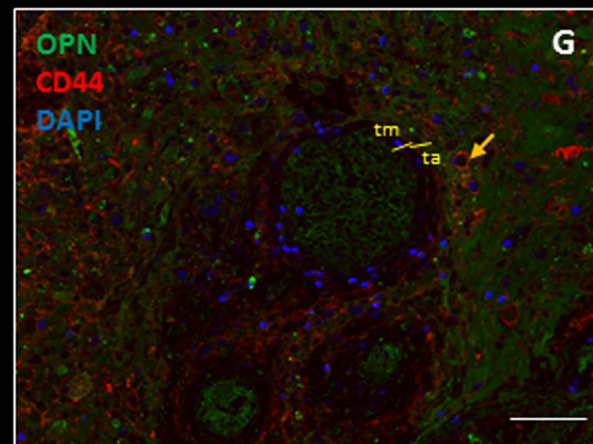
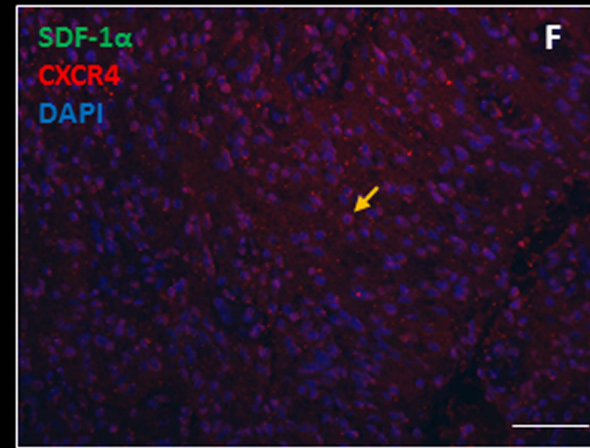
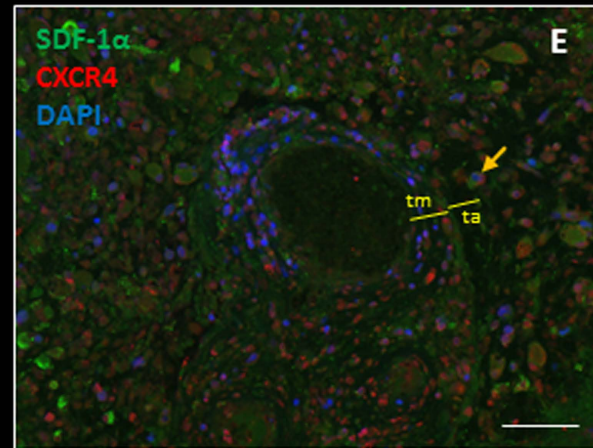


Supplementary Figure 1. Fluorescence immunohistochemical staining showing the expression of chemoattractants SDF-1 α and OPN and their receptors CXCR4 and CD44, respectively, in bone marrow (**A-D**) and in glioblastoma (**E-H**). SDF-1 α and OPN and their receptors CXCR4 and CD44 are abundantly expressed in peri-arteriolar HSC niches in bone marrow and in peri-arteriolar GSC niches in glioblastoma (**A, E**). The receptors CXCR4 and CD44 are expressed throughout bone marrow and glioblastoma tumors (**B, D, F, H**), whereas the chemoattractants SDF-1 α and OPN are preferentially expressed in niches (**A, C, E, G**). DAPI is used for nuclear counterstaining. Abbreviations: CXCR4, C-X-C receptor type 4; GSC, glioblastoma stem cell; HSC, hematopoietic stem cell; SDF-1 α , stromal-derived factor-1 α ; OPN, osteopontin; ta, tunica adventitia; tm, tunica media. Scale bar = 100 μ m.

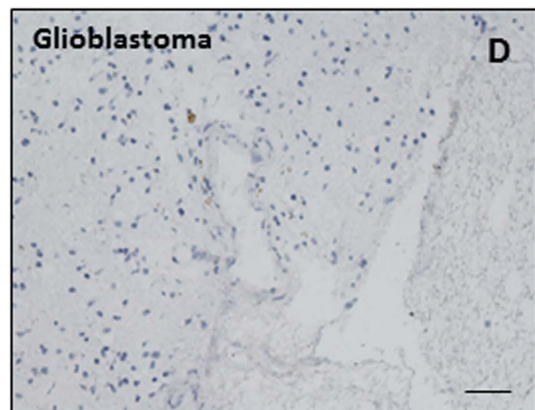
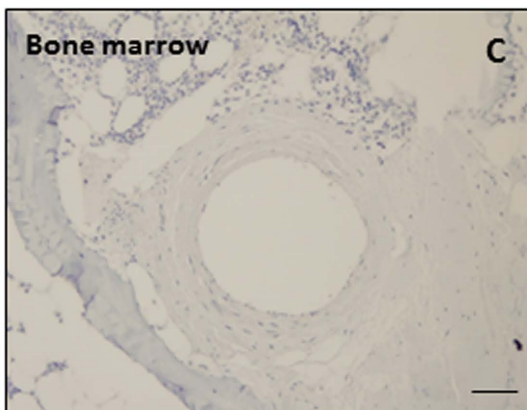
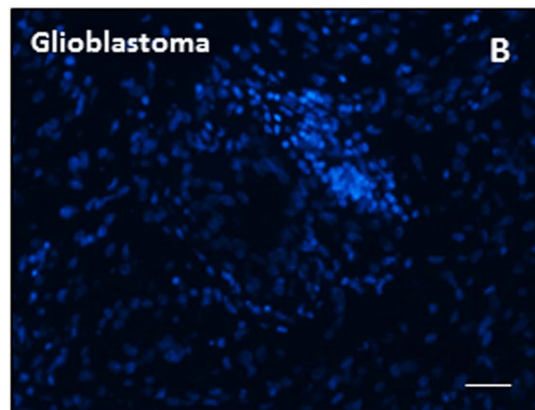
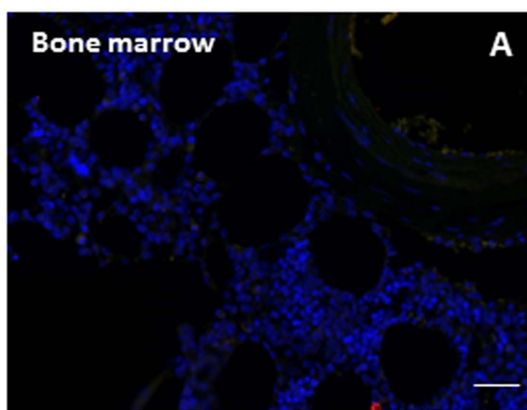


Bone marrow



Glioblastoma

Supplementary Figure 2. Negative control incubations of human bone marrow (**A**) and human glioblastoma (**B**) paraffin sections in the absence of primary antibodies and in the presence of Alexa Fluor 546-conjugated secondary goat anti-mouse antibodies (red) and Alexa Fluor 488-conjugated secondary goat anti-rabbit antibodies (green). DAPI is used for nuclear counterstaining. Negative control incubations of human bone marrow (**C**) and human glioblastoma (**D**) paraffin sections in the absence of primary antibodies and in the presence of HRP-conjugated secondary antibodies with DAB as chromogen. Cell nuclei are counterstained in blue-purple with hematoxylin. Scale bar = 100 μm .



Supplementary Figure 2