

When Civilians are Attacked: Gender Equality and Terrorist Targeting

Online Supplementary Material

Laura Huber
Ph.D Candidate
Emory University

February 12, 2019

Dependent Variable Coding Scheme

The following types of targets were coded as “civilian-oriented.” The description of “target type” comes from the GTD Codebook.

- **BUSINESS** - Businesses are defined as individuals or organizations engaged in commercial or mercantile activity as a means of livelihood. Any attack on a business or private citizens patronizing a business such as a restaurant, gas station, music store, bar, caf, etc. This includes attacks carried out against corporate offices or employees of firms like mining companies, or oil corporations. Furthermore, includes attacks conducted on business people or corporate officers. Included in this value as well are hospitals and chambers of commerce and cooperatives. Does not include attacks carried out in public or quasipublic areas such as business district or commercial area, or generic businessrelated individuals such as businessmen (these attacks are captured under Private Citizens and Property)
- **ABORTION RELATED** - Attacks on abortion clinics, employees, patrons, or security personnel stationed at clinics.
- **AIRPORTS AIRCRAFT** - An attack that was carried out either against an aircraft or against an airport. Attacks against airline employees while on board are also included in this value. Includes attacks conducted against airport business offices and executives. Military aircraft are not included.
- **EDUCATIONAL INSTITUTION** - Attacks against schools, teachers, or guards protecting school sites. Includes attacks against university professors, teaching staff and school buses. Moreover, includes attacks against religious schools in this value. As noted below in the Private Citizens and Property value, the GTD has several attacks against students. If attacks involving students are not expressly against a school, university or other educational institution or are carried out in an educational setting, they are coded as private citizens and property. Excludes attacks against military schools (attacks on military schools are coded as Military, see below).
- **JOURNALISTS & MEDIA** - Includes, attacks on reporters, news assistants, photographers, publishers, as well as attacks on media headquarters and offices. Attacks on transmission facilities such as antennae or transmission towers, or broadcast infrastructure are coded as Telecommunications, see below.
- **MARITIME (INCLUDES PORTS AND MARITIME FACILITIES)** - Includes civilian maritime: attacks against fishing ships, oil tankers, ferries, yachts, etc. (Attacks on fishermen are coded as Private Citizens and Property, see below).
- **NGO** - Includes attacks on offices and employees of nongovernmental organizations (NGOs). NGOs here include large multinational nongovernmental organizations such as the Red Cross and Doctors without Borders, as well as domestic organizations. Does not include labor unions, social clubs, student groups, and other nonNGO (such cases are coded as Private Citizens and Property, see below)
- **PRIVATE CITIZENS & PROPERTY** - This value includes attacks on individuals, the public in general or attacks in public areas including markets, commercial streets, busy intersections and pedestrian malls. Also includes ambiguous cases where the target/victim was a named individual, or where the target/victim of an attack could be

identified by name, age, occupation, gender or nationality. This value also includes ceremonial events, such as weddings and funerals. The GTD contains a number of attacks against students. If these attacks are not expressly against a school, university or other educational institution or are not carried out in an educational setting, these attacks are coded using this value. Also, includes incidents involving political supporters as private citizens and property, provided that these supporters are not part of a government-sponsored event. Finally, this value includes police informers. Does not include attacks causing civilian casualties in businesses such as restaurants, cafes or movie theaters (these categories are coded as Business see above).

- RELIGIOUS FIGURES/INSTITUTIONS - This value includes attacks on religious leaders, (Imams, priests, bishops, etc.), religious institutions (mosques, churches), religious places or objects (shrines, relics, etc.). This value also includes attacks on organizations that are affiliated with religious entities that are not NGOs, businesses or schools. Attacks on religious pilgrims are considered Private Citizens and Property; attacks on missionaries are considered religious figures.
- TRANSPORTATION (OTHER THAN AVIATION) - Attacks on public transportation systems are included in this value. This can include efforts to assault public buses, minibuses, trains, metro/subways, highways (if the highway itself is the target of the attack), bridges, roads, etc. The GTD contains a number of attacks on generic terms such as cars or vehicles. These attacks are assumed to be against Private Citizens and Property unless shown to be against public transportation systems. In this regard, buses are assumed to be public transportation unless otherwise noted.
- TOURISTS - This value includes the targeting of tour buses, tourists, or tours. Tourists are persons who travel primarily for the purposes of leisure or amusement. Government tourist offices are included in this value. The attack must clearly target tourists, not just an assault on a business or transportation system used by tourists. Travel agencies are coded as business targets.

The following types of targets were coded as “government-oriented.” The description of “target type” comes from the GTD Codebook.

- GOVERNMENT (GENERAL) - Any attack on a government building; government member, former members, including members of political parties in official capacities, their convoys, or events sponsored by political parties; political movements; or a government sponsored institution where the attack is expressly carried out to harm the government. This value includes attacks on judges, public attorneys (e.g., prosecutors), courts and court systems, politicians, royalty, head of state, government employees (unless police or military), election-related attacks, or intelligence agencies and spies. This value does not include attacks on political candidates for office or members of political parties that do not hold an elected office (these attacks are captured in Private Citizens and Property).
- POLICE - This value includes attacks on members of the police force or police installations; this includes police boxes, patrols headquarters, academies, cars, checkpoints, etc. Includes attacks against jails or prison facilities, or jail or prison staff or guards.
- MILITARY - Includes attacks against military units, patrols, barracks, convoys, jeeps,

and aircraft. Also includes attacks on recruiting sites, and soldiers engaged in internal policing functions such as at checkpoints and in antinarcotics activities. This category also includes peacekeeping units that conduct military operations (e.g., AMISOM) Excludes attacks against nonstate militias and guerrillas, these types of attacks are coded as Terrorist/Nonstate Militias see below.

- **GOVERNMENT (DIPLOMATIC)** - Attacks carried out against foreign missions, including embassies, consulates, etc. This value includes cultural centers that have diplomatic functions, and attacks against diplomatic staff and their families (when the relationship is relevant to the motive of the attack) and property. The United Nations is a diplomatic target.
- **FOOD OR WATER SUPPLY** - Attacks on food or water supplies or reserves are included in this value. This generally includes attacks aimed at the infrastructure related to food and water for human consumption.
- **TELECOMMUNICATION** - This includes attacks on facilities and infrastructure for the transmission of information. More specifically this value includes things like cell phone towers, telephone booths, television transmitters, radio, and microwave towers.
- **TERRORISTS/NONSTATE MILITIAS** - Terrorists or members of identified terrorist groups within the GTD are included in this value. Membership is broadly defined and includes informants for terrorist groups, but excludes former or surrendered terrorists. This value also includes cases involving the targeting of militias and guerillas.
- **UTILITIES** - This value pertains to facilities for the transmission or generation of energy. For example, power lines, oil pipelines, electrical transformers, high tension lines, gas and electric substations, are all included in this value. This value also includes lampposts or street lights. Attacks on officers, employees or facilities of utility companies excluding the type of facilities above are coded as business.
- **VIOLENT POLITICAL PARTIES** - This value pertains to entities that are both political parties (and thus, coded as government in this coding scheme) and terrorists. It is operationally defined as groups that engage in electoral politics and appear as Perpetrators in the GTD.

The following types of targets were excluded from the coding due to ambiguity.

- **OTHER** - This value includes acts of terrorism committed against targets which do not fit into other categories. Some examples include ambulances, firefighters, refugee camps, and international demilitarized zones.
- **UNKNOWN** - The target type cannot be determined from the available information.

Control Variable Information

First, to control for the capacity of the state, the one-year lagged measure of a state's material capabilities, *CINC* from Stinger, Bremley, and Stucker (1972). *CINC* is a composite measure of a state's military expenditure, military personnel, energy consumption, iron and steel production, urban population, and total population. States with higher capacity are more likely to successfully prevent and punish terrorist attacks and may also have higher levels of gender equality.

Additionally, to control for the influence of political and civil rights on both terrorism and gender equality, two measures from Freedom House are used. Political and civil freedoms and liberties may affect terrorism in several ways savun2009, chenoweth2010. As states become more democratic and free, they may decrease the likelihood of terrorism by providing more opportunities for nonviolent resolution and political participation by otherwise marginalized and dissatisfied groups younas2015. However, greater political freedom may also promote terrorism by allowing more opportunities and resources for political mobilization, which can decrease the costs of engaging in terrorism li2005. Further, gender equality, democracy, and political freedoms are mutually reinforcing hudson2013sex. To account for the influence of political institutions, two variables, *Political Rights* and *Civil Liberties*, lagged by one year are included in all models. Both variables are measured on a seven point scale where higher values indicate lower institutional quality.

Moreover, a control for the wealth of the state, the one year lagged Gross Domestic Product, *GDP*, is included. While the empirical relationship between terrorism and state wealth is mixed, higher state wealth may increase the opportunity cost of terrorism and increase state capacity to counter and defeat terrorist groups. Additionally, as state wealth increases, gender equality also increases hudson2013sex. *GDP* is gathered from the World Bank and log transformed.

Further, a control for the state *Population*, lagged by one year and log-transformed is included since larger states have demonstrated an increased propensity to conflict due to the greater mobilization potential of the population harris2016. Additionally, the occurrence of terrorism varies across time as different periods have seen fluctuating levels of terrorism and have also seen terrorism employed for different purposes, which may influence whether civilian or government targets are selected.

Moreover, gender equality also changes over time with it increasing in the last several decades. Specifically, enderssandler1999 demonstrated that terrorism has greatly reduced since the end of the Cold War and the end of the Cold War has seen the rise of women's rights movements globally. Therefore, a dichotomous indicator of whether the state-year occurs during the Cold War or afterwards is included. *Cold War* is coded as 1 if the state-year falls between 1970 and 1991.

Further, to control for a possible increase in civilian-focused terrorist attacks during war in which the government's military and security forces may be mobilized, making them riskier to target, while civilians are relatively more vulnerable to attack, a dichotomous control for whether the state is experiencing either an interstate or intrastate war is included. Further, conflict has been linked to changes in women's rights. On one hand, war may increase economic opportunity for women goldstein2003war. However, war may also have a negative influence of women's rights since women often suffer from economic and social displacement. Inter- or intra-state wars were coded according to the Correlates of War sarkeeswayman2010 and the reiterstamhorowitzforth datasets.

Also, the presence of a large youth population in a state may increase its likelihood of

experiencing terrorist attacks. Youth, especially young men, have been shown to have low opportunity costs due to their lowered skill set and decreased family ties, which may increase the probability of terrorism goldstone2002. Additionally, thayer2010 demonstrate that large numbers of unmarried, young men can increase the likelihood of violence and can lower the opportunity cost of terrorism. To control for the presence of youth bulges, an indicator of the proportion of the population between the ages of 15 and 24 are included.

Muslim Majority is a dichotomous indicator of whether the majority of the state’s population was Muslim in the state-year. Due to some forms of traditional Islam, Muslim majority populations may react differently to rising gender equality than non-Muslim states.

Further, to account for other types of terrorism which may occur simultaneously with civilian-oriented terrorism, a count of the number of total attacks made in the previous year is included in each model. As the number of total attacks within a country increases, terrorist groups may turn increasingly to civilian targets in addition to government targets as the intensity of the conflict and competition between terrorist organizations rises chenoweth2010. Additionally, the number of total attacks may also influence gender equality within the state if it is a symptom of larger conflict goldstein2003war.

Finally, when *Secondary Ratio* is the independent variable, a lagged control for the total population’s secondary school ratio is included to account for the rising female attendance that may occur simultaneously with a more general pattern of increasing education rates within the country.

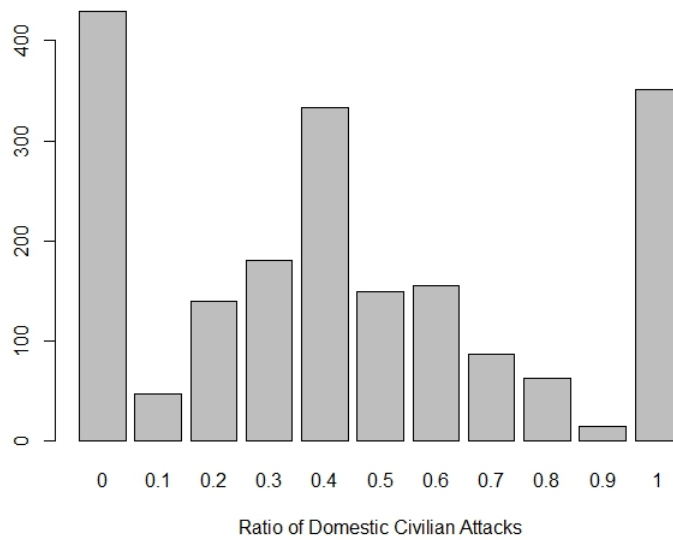
Table 1: Cross-National Summary Statistics

Statistic	N	Mean	St. Dev.	Min	Max
Proportion Civilian Attacks	5,786	0.161	0.302	0.000	1.000
Fertility	5,637	4.227	2.055	1.076	8.713
Secondary Ratio	3,504	0.860	0.270	0.000	3.022
Legislature Female	4,087	10.631	8.839	0.000	48.800
Gender Quota	5,521	0.046	0.209	0	1
National Capabilities	5,571	0.007	0.020	0.00001	0.181
Civil Liberties	5,274	4.075	1.906	1	7
Political Rights	5,274	4.093	2.211	1	7
GDP, Logged	5,058	23.183	2.245	17.419	30.260
Population, Logged	5,634	15.889	1.597	11.604	20.994
War	5,568	0.124	0.329	0	1
Youth Bulge	3,963	1.046	0.290	0.433	2.024
Muslim Majority	5,735	0.244	0.429	0	1
Cold War	5,738	0.541	0.498	0	1
Total Terror Attacks	5,586	7.681	33.063	0	517

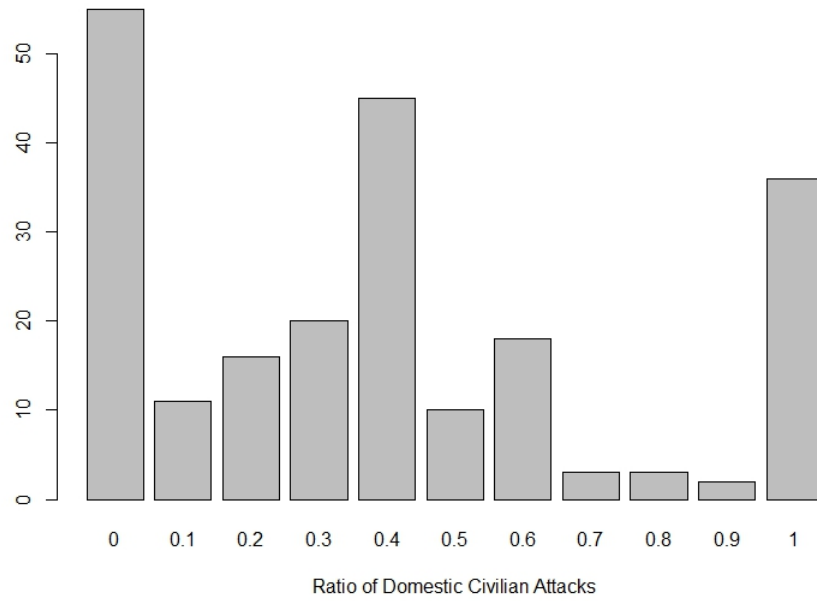
Table 2: Summary Statistics: India's Women's Reservation Sub-national Data

Statistic	N	Mean	St. Dev.	Min	Max
Civilian Attacks	387	3.406	9.771	0	73
Women Reservation Years	389	4.075	5.032	0	21
Government Attacks	387	4.704	13.602	0	97
Population	391	55,368,089.000	37,469,125.000	4,636,842.000	196,032,260.000
GDP	374	79,203,221.000	59,296,228.000	6,078,741.000	369,187,578.000
Insurgency	391	0.143	0.351	0	1
Number of Elections	378	1.275	2.114	0	16

Ratio of Attacks Against Civilian-Oriented Targets (Country-Year)



Ratio of Attacks Against Civilian-Oriented Targets in India (State-Year)



Number of Domestic Civilian Attacks Per Country Year

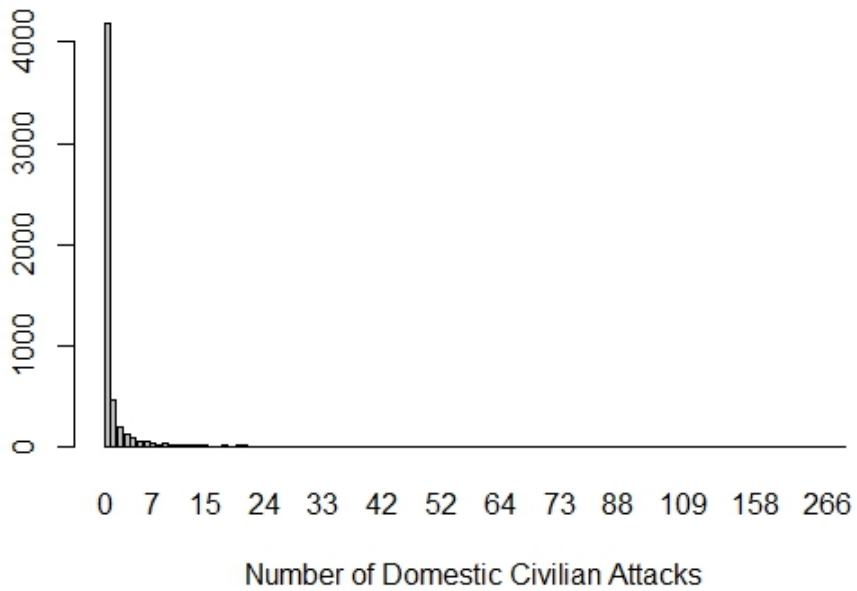


Table 3: Endogeneity Tests: Proportion Civilian Attacks and Gender Equality, One Year

	<i>Dependent variable:</i>			
	Fertility	Secondary Ratio	Legislature Percent	Gender Quota
	(1)	(2)	(3)	(4)
Proportion Civilian	0.08 (0.07)	0.02 (0.01)	-2.62*** (0.45)	0.01 (0.01)
Civil Liberties	0.07** (0.03)	0.0002 (0.01)	-0.97*** (0.20)	0.01 (0.01)
Political Rights	0.06** (0.03)	-0.01* (0.005)	0.87*** (0.15)	-0.02*** (0.01)
GDP	-0.46*** (0.03)	0.08*** (0.004)	1.12*** (0.14)	-0.01*** (0.004)
CINC	-7.92*** (1.40)	0.09 (0.25)	-28.11** (13.36)	-2.32*** (0.22)
Population	0.34*** (0.03)	-0.09*** (0.005)	-0.49*** (0.18)	0.06*** (0.01)
War	0.17** (0.08)	-0.01 (0.01)	0.40 (0.45)	-0.07*** (0.01)
Youth Bulge	3.18*** (0.13)	0.10*** (0.02)	-3.36*** (0.71)	0.09*** (0.02)
Muslim Majority	0.11* (0.06)	-0.09*** (0.01)	-4.81*** (0.32)	0.08*** (0.01)
Cold War	0.58*** (0.07)	-0.08*** (0.01)	-2.90*** (0.29)	-0.07*** (0.01)
Total Attacks, Lagged	-0.002*** (0.001)	0.001*** (0.0001)	-0.01*** (0.004)	-0.0001 (0.0001)
Constant	4.82*** (0.45)	0.43*** (0.08)	-1.24 (2.38)	-0.63*** (0.07)

Note:

*p<0.1; **p<0.05; ***p<0.01
 Logistic Regression
 State-Clustered Standard Errors

Number of Domestic Civilian Attacks in India Per State Year

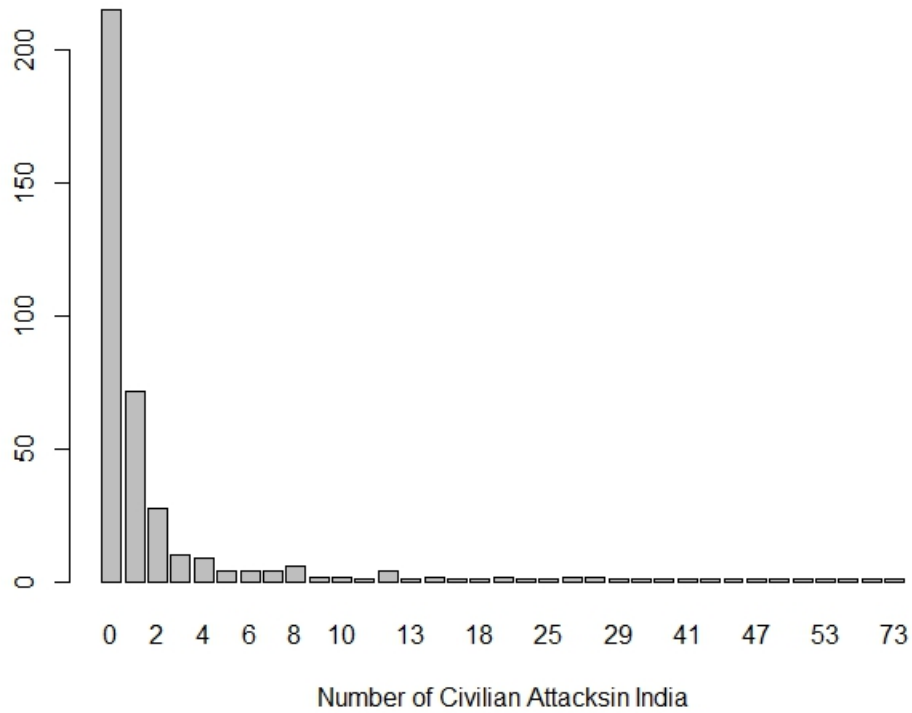


Table 4: Marginal Effects of Table 2

	Model 4	Model 5	Model 6
Fertility	.031*** (0.004)		
Secondary Female		0.03*** (0.004)	
Legislature Percent			0.003*** (0.0007)
Gender Quota			-0.03** (0.01)
Civil Liberties	-0.03*** (0.005)	-0.03*** (0.005)	-0.03*** (0.005)
Political Rights	0.01** (0.003)	0.008** (0.003)	0.006 (0.004)
GDP	0.02*** (0.005)	0.02*** (0.005)	0.02*** (0.004)
Cinc	-1.17*** (0.27)	-1.17*** (0.27)	-0.93*** (0.33)
Population	-0.02*** (0.005)	-0.02*** (0.005)	-0.01* (0.006)
War	-0.03*** (0.007)	-0.03*** (0.007)	-0.02*** (0.008)
Youth Bulge	-0.14*** (0.03)	0.14*** (0.03)	-0.01 (0.03)
Muslim Majority	0.07*** (0.01)	0.07*** (0.01)	0.09*** (0.03)
Cold War	-0.05*** (0.007)	-0.05*** (0.006)	-0.02*** (0.008)
Total Attacks	0.0001*** (0.00003)	0.0001*** (0.00003)	0.0001*** (0.00003)
Proportion Civilian Attacks, Lagged	0.24*** (0.01)	0.24*** (0.01)	0.24*** (0.01)

Table 5: Marginal Effects of Table 4

	Model 10	Model 11
Reservation Years	0.01** (0.004)	0.01** (0.004)
Population	0.00** (0.00)	0.00** (0.00)
GDP	-0.00 (0.00)	-0.00 (0.00)
Insurgency	-0.04 (0.03)	-0.04 (0.03)
Number of Elections	0.02** (0.01)	0.02** (0.01)
Total Attacks	-0.0002 (0.0003)	-0.0003 (0.0003)
Proportion Civilian Attacks, Lagged		0.03 (0.05)

Table 6: Cross-National Robustness Checks: Government Ideology Models

	<i>Dependent variable:</i>		
	Proportion Civilian Attacks		
	(1)	(2)	(3)
Fertility	0.19*** (0.03)		
Secondary Ratio		-0.12 (0.31)	
Legislature Female			0.01* (0.005)
Gender Quota			-0.50*** (0.17)
Leftist Government	-0.07* (0.04)	0.08 (0.06)	-0.06 (0.04)
Civil Liberties	0.09** (0.04)	0.20*** (0.06)	0.09** (0.04)
Political Rights	-0.12*** (0.02)	-0.39*** (0.05)	-0.16*** (0.02)
GDP	0.16*** (0.04)	-0.19*** (0.05)	0.04 (0.03)
CINC	4.22** (1.93)	6.26** (2.90)	6.62*** (2.39)
Population	-0.22*** (0.05)	-0.02 (0.07)	-0.16*** (0.05)
War	-0.22*** (0.06)	-0.18** (0.08)	-0.18*** (0.06)
Youth Bulge	-0.89*** (0.19)	-0.46 (0.35)	-0.61*** (0.18)
Muslim Majority	0.26*** (0.06)	0.47*** (0.16)	0.42*** (0.06)
Cold War	-0.03 (0.04)	-0.15** (0.07)	0.02 (0.06)
Total Attacks, Lagged	0.001** (0.0002)	-0.0001 (0.0005)	0.0004* (0.0002)
Total Secondary		0.01*** (0.003)	
Proportion Civilian, Lagged	0.35*** (0.08)	0.15 (0.12)	0.46*** (0.09)
Constant	-0.09 (0.64)	5.25*** (0.73)	2.00*** (0.65)

Note:

*p<0.1; **p<0.05; ***p<0.01

Table 7: Cross-National Robustness Checks: Government Ideology and Government Divided Models

	<i>Dependent variable:</i>			
	Proportion Civilian Attacks			
	(1)	(2)	(3)	(4)
Fertility	0.191*** (0.028)			
Maternal Mortality		0.001** (0.0003)		
Secondary Ratio			-0.190 (0.302)	
Legislature Female				0.008* (0.005)
Gender Quota				-0.500*** (0.173)
Leftist Government	-0.071* (0.040)	-0.059 (0.050)	0.115* (0.060)	-0.064 (0.043)
Government Fractionalization	0.005 (0.079)	0.075 (0.091)	0.359*** (0.121)	-0.036 (0.078)
Civil Liberties	0.092** (0.037)	0.211*** (0.036)	0.209*** (0.054)	0.093** (0.042)
Political Rights	-0.129*** (0.023)	-0.132*** (0.022)	-0.386*** (0.047)	-0.155*** (0.024)
GDP	0.160*** (0.037)	0.162*** (0.048)	-0.216*** (0.052)	0.039 (0.033)
CINC	4.235** (2.021)	2.238 (2.310)	4.009 (2.684)	6.845*** (2.525)
Population	-0.221*** (0.047)	-0.217*** (0.055)	0.014 (0.065)	-0.163*** (0.050)
War	-0.222*** (0.057)	-0.391*** (0.062)	-0.184** (0.080)	-0.182*** (0.056)
Youth Bulge	-0.887*** (0.193)	-0.872*** (0.246)	-0.732** (0.324)	-0.583*** (0.191)
Muslim Majority	0.252*** (0.063)	0.287*** (0.060)	0.567*** (0.156)	0.411*** (0.066)
Cold War	-0.031 (0.046)	-0.030 (0.066)	-0.081 (0.072)	0.011 (0.055)
Total Attacks, Lagged	0.001** (0.0002)	0.001*** (0.0003)	0.0003 (0.0005)	0.0004* (0.0002)
Total Secondary			0.009*** (0.003)	
Proportion Civilian, Lagged	0.356*** (0.085)	0.504*** (0.094)	0.111 (0.113)	0.456*** (0.088)
Constant	-0.169 (0.656)	-0.272 (0.819)	5.464*** (0.716)	2.025*** (0.664)

Note:

*p<0.1; **p<0.05; ***p<0.01

Table 8: Cross-National Robustness Checks: Government Ideology (Left, Right, and Center) and Government Divided Models

	<i>Dependent variable:</i>			
	Proportion Civilian Attacks			
	(1)	(2)	(3)	(4)
Fertility	0.19*** (0.03)			
MaternalMortalitylag1		0.001* (0.0004)		
Secondary Ratio			-0.32 (0.31)	
Legislature Female				0.01 (0.005)
Gender Quota				-0.53*** (0.17)
Center Government	-0.05 (0.06)	0.07 (0.09)	0.04 (0.09)	0.01 (0.06)
Right Government	0.03 (0.06)	0.16* (0.09)	-0.12 (0.09)	0.11* (0.06)
Government Fractionalization	0.01 (0.08)	0.13 (0.09)	0.40*** (0.11)	-0.01 (0.08)
Civil Liberties	0.09** (0.04)	0.20*** (0.04)	0.20*** (0.06)	0.10** (0.04)
Political Rights	-0.13*** (0.02)	-0.13*** (0.02)	-0.39*** (0.05)	-0.15*** (0.02)
GDP	0.16*** (0.04)	0.14*** (0.05)	-0.20*** (0.05)	0.03 (0.03)
CINC	3.66 (2.38)	-1.08 (3.01)	5.85** (2.70)	4.36 (2.84)
Population	-0.21*** (0.05)	-0.16*** (0.06)	-0.03 (0.07)	-0.13** (0.05)
War	-0.22*** (0.06)	-0.38*** (0.06)	-0.16** (0.08)	-0.19*** (0.06)
Youth Bulge	-0.90*** (0.20)	-0.83*** (0.25)	-0.56* (0.32)	-0.63*** (0.20)
Muslim Majority	0.24*** (0.07)	0.22*** (0.08)	0.58*** (0.15)	0.35*** (0.07)
Cold War	-0.03 (0.05)	-0.04 (0.07)	-0.07 (0.07)	0.01 (0.05)
Total Attacks, Lagged	0.001** (0.0002)	0.001*** (0.0003)	0.0002 (0.0004)	0.0004* (0.0002)
Total Secondary			0.01*** (0.003)	
Proportion Civilian, Lagged	0.35*** (0.09)	0.48*** (0.09)	0.10 (0.11)	0.43*** (0.09)
Constant	-0.24 (0.68)	-0.86 (0.85)	5.79*** (0.76)	1.55** (0.70)

Table 9: Cross-National Robustness Check: Full Independent Variables Model

	<i>Dependent variable:</i>
Fertility	0.106*** (0.025)
Secondary Female	-0.203* (0.115)
Female Legislature	0.004 (0.003)
Gender Quota	-0.273*** (0.078)
Civil Liberties	0.014 (0.029)
Political Rights	-0.018 (0.022)
GDP	0.170*** (0.021)
CINC	-7.974*** (1.795)
Population	-0.070** (0.028)
War	-0.072* (0.041)
Youth Bulge	-0.468*** (0.155)
Muslim Majority	0.179*** (0.064)
Cold War	-0.085** (0.043)
Total Attacks, lagged	0.0001 (0.0002)
Ratio Civilian Attacks, lagged	0.770*** (0.081)
Constant	-3.066*** (0.443)

Note:

*p<0.1; **p<0.05; ***p<0.01

Table 10: Cross-national Robustness Check: Country Fixed Effects

	<i>Dependent variable:</i>		
	Proportion Civilian Attacks		
	(1)	(2)	(3)
Fertility	0.241*** (0.069)		
Secondary Ratio		2.885*** (0.519)	
Legislature Female			0.025*** (0.004)
Gender Quota			-0.255*** (0.091)
Civil Liberties	0.003 (0.024)	0.298*** (0.046)	0.047* (0.024)
Political Rights	0.053*** (0.014)	-0.095** (0.039)	0.024 (0.015)
GDP	-0.070 (0.044)	-0.039 (0.061)	-0.126*** (0.049)
CINC	-5.157** (2.206)	-23.094** (8.989)	4.837 (5.302)
Population	1.535*** (0.257)	1.285*** (0.341)	0.646*** (0.200)
War	-0.131*** (0.037)	-0.011 (0.058)	-0.093** (0.041)
Youth Bulge	-0.065 (0.175)	0.262 (0.339)	0.249 (0.193)
Muslim Majority	-0.013 (0.182)		1.561*** (0.277)
Cold War	-0.017 (0.042)		0.062 (0.044)
Total Attacks, Lagged	0.001*** (0.0001)	0.002*** (0.0004)	0.0004** (0.0002)
Total Secondary Ratio		-0.020*** (0.003)	
Ratio Civilian, Lagged	0.520*** (0.070)	0.095 (0.107)	0.483*** (0.069)
Constant	-23.838*** (4.310)	-21.196*** (5.375)	-7.382** (3.197)
Country Fixed Effects	X	X	X

*Note:**p<0.1; **p<0.05; ***p<0.01
Logistic Regression

Table 11: Cross-national Robustness Check: Country-Year Fixed Effects

	<i>Dependent variable:</i>		
	Proportion Civilian Attacks		
	(1)	(2)	(3)
Fertility	0.226*** (0.065)		
Secondary Ratio		0.967*** (0.344)	
Legislature Female			0.026*** (0.004)
Gender Quota			-0.532*** (0.096)
Civil Liberties	-0.0003 (0.021)	0.210*** (0.033)	0.053** (0.023)
Political Rights	0.036** (0.014)	-0.074*** (0.028)	0.010 (0.015)
GDP	-0.103* (0.055)	0.075 (0.095)	-0.089 (0.061)
CINC	-4.582** (2.283)	10.745 (6.983)	-0.645 (4.985)
Population	1.551*** (0.285)	0.211 (0.423)	1.339*** (0.235)
War	-0.103*** (0.037)	0.093* (0.050)	-0.058 (0.041)
Youth Bulge	0.096 (0.179)	0.035 (0.331)	0.433** (0.201)
Muslim Majority	-0.128 (0.182)	-1.411 (1.295)	1.372*** (0.277)
Total Attacks, Lagged	0.001*** (0.0001)	0.001*** (0.0003)	0.001*** (0.0002)
Total Secondary Ratio		-0.028*** (0.003)	
Ratio Civilian, Lagged	0.535*** (0.064)	0.060 (0.087)	0.491*** (0.065)
Constant	-23.347*** (5.258)	-4.909 (7.442)	-20.237*** (4.457)
Country Fixed Effects	X	X	X
Year Fixed Effects	X	X	X

*Note:**p<0.1; **p<0.05; ***p<0.01
Logistic Regression

Table 12: Cross-national Robustness Check: Israel Palestine Control

	<i>Dependent variable:</i>		
	Proportion Civilian Attacks		
Fertility	0.118*** (0.017)		
Secondary Ratio		-0.349*** (0.114)	
Legislature Female			0.013*** (0.003)
Gender Quota			-0.171*** (0.063)
Civil Liberties	-0.134*** (0.020)	0.083** (0.034)	-0.113*** (0.022)
Political Rights	0.042*** (0.013)	-0.030 (0.022)	0.035** (0.016)
GDP	0.071*** (0.019)	0.102*** (0.027)	0.052*** (0.018)
CINC	-5.930*** (1.107)	-16.826*** (2.087)	-5.654*** (1.353)
Population	-0.024 (0.022)	0.095*** (0.037)	0.008 (0.024)
War	-0.114*** (0.031)	0.005 (0.053)	-0.105*** (0.033)
Youth Bulge	-0.570*** (0.127)	-0.922*** (0.226)	-0.098 (0.112)
Muslim Majority	0.294*** (0.039)		0.359*** (0.042)
Cold War	-0.209*** (0.027)	-0.144*** (0.044)	-0.083** (0.033)
Total Attacks, Lagged	0.001*** (0.0001)	0.0003 (0.0004)	0.001*** (0.0001)
Total Secondary		-0.006*** (0.002)	
Proportion Civilian, Lagged	0.914*** (0.062)	0.729*** (0.103)	0.908*** (0.064)
Israel/Palestine Dummy	0.610*** (0.064)	1.705*** (0.174)	0.717*** (0.067)
Constant	-1.295*** (0.358)	-3.083*** (0.609)	-1.706*** (0.372)

Note:

*p<0.1; **p<0.05; ***p<0.01

Logistic Regression

State-Clustered Standard Errors

Table 13: Cross-national Robustness Check: Physical Integrity Rights Control

	<i>Dependent variable:</i>		
	Proportion Civilian Attacks		
	(1)	(2)	(3)
Fertility	0.118*** (0.021)		
Secondary Ratio		-0.460*** (0.155)	
Legislature Female			0.014*** (0.003)
Gender Quota			-0.178*** (0.065)
Civil Liberties	-0.123*** (0.022)	0.106*** (0.041)	-0.080*** (0.023)
Political Rights	0.046*** (0.014)	-0.070*** (0.025)	0.030* (0.018)
GDP	0.080*** (0.020)	0.086*** (0.028)	0.045** (0.018)
CINC	-4.351*** (1.234)	-13.448*** (2.286)	-4.790*** (1.438)
Population	-0.045* (0.024)	0.042 (0.045)	0.010 (0.025)
War	-0.094** (0.037)	-0.098* (0.058)	-0.079** (0.037)
Youth Bulge	-0.519*** (0.153)	-0.816*** (0.255)	-0.075 (0.127)
Muslim Majority	0.266*** (0.042)	0.115 (0.074)	0.265*** (0.044)
Cold War	-0.231*** (0.028)	-0.239*** (0.052)	-0.121*** (0.034)
Total Attacks, Lagged	0.001*** (0.0001)	0.001** (0.0004)	0.001*** (0.0001)
Total Secondary		-0.0004 (0.002)	
Proportion Civilian, Lagged	0.983*** (0.066)	0.983*** (0.119)	0.987*** (0.066)
Physical Integrity Rights	0.033*** (0.010)	0.005 (0.020)	0.054*** (0.010)
Constant	-1.379*** (0.432)	-2.161*** (0.705)	-1.862*** (0.450)

Note:

*p<0.1; **p<0.05; ***p<0.01

Logistic Regression

State-Clustered Standard Errors

Table 14: Cross-national Robustness Check: 2 Year Lags

	<i>Dependent variable:</i>		
	Proportion Civilian Attacks		
	(1)	(2)	(3)
Fertility, 2 year lag	0.127*** (0.017)		
Secondary Ratio, 2 year lag		-0.556*** (0.143)	
Legislature Female, 2 year lag			0.015*** (0.003)
Gender Quota, 2 year lag			-0.246*** (0.068)
Civil Liberties	-0.135*** (0.021)	0.137*** (0.035)	-0.114*** (0.023)
Political Rights	0.035** (0.013)	-0.075*** (0.023)	0.020 (0.016)
GDP	0.088*** (0.019)	0.123*** (0.028)	0.033* (0.019)
CINC	-4.813*** (1.107)	-14.696*** (2.352)	-4.935*** (1.367)
Population	-0.065*** (0.022)	0.032 (0.039)	-0.004 (0.024)
War	-0.117*** (0.031)	-0.093 (0.063)	-0.140*** (0.034)
Youth Bulge	-0.572*** (0.127)	-0.764*** (0.216)	-0.173 (0.114)
Muslim Majority	0.289*** (0.039)	-0.012 (0.075)	0.425*** (0.044)
Cold War	-0.227*** (0.027)	-0.228*** (0.048)	-0.101*** (0.033)
Total Attacks, Lagged	0.001*** (0.0001)	0.0003 (0.0003)	0.0004*** (0.0001)
Total Secondary		-0.002 (0.002)	
Proportion Civilian, Lagged	0.971*** (0.061)	0.872*** (0.111)	0.965*** (0.065)
Constant	-1.018*** (0.360)	-2.726*** (0.606)	-0.893** (0.370)

Note:

*p<0.1; **p<0.05; ***p<0.01

Logistic Regression

State-Clustered Standard Errors

Table 15: Cross-national Robustness Check: 5 Year Lag

	<i>Dependent variable:</i>		
	Proportion Civilian Attacks		
	(1)	(2)	(3)
Fertility, 5 year lag	0.127*** (0.017)		
Secondary Ratio, 5 year lag		-0.556*** (0.143)	
Legislature Female, 5 year lag			0.015*** (0.003)
Gender Quota, 5 year lag			-0.246*** (0.068)
Civil Liberties	-0.135*** (0.021)	0.137*** (0.035)	-0.114*** (0.023)
Political Rights	0.035** (0.013)	-0.075*** (0.023)	0.020 (0.016)
GDP	0.088*** (0.019)	0.123*** (0.028)	0.033* (0.019)
CINC	-4.813*** (1.107)	-14.696*** (2.352)	-4.935*** (1.367)
Population	-0.065*** (0.022)	0.032 (0.039)	-0.004 (0.024)
War	-0.117*** (0.031)	-0.093 (0.063)	-0.140*** (0.034)
Youth Bulge	-0.572*** (0.127)	-0.764*** (0.216)	-0.173 (0.114)
Muslim Majority	0.289*** (0.039)	-0.012 (0.075)	0.425*** (0.044)
Cold War	-0.227*** (0.027)	-0.228*** (0.048)	-0.101*** (0.033)
Total Attacks, Lagged	0.001*** (0.0001)	0.0003 (0.0003)	0.0004*** (0.0001)
Total Secondary		-0.002 (0.002)	
Proportion Civilian, Lagged	0.971*** (0.061)	0.872*** (0.111)	0.965*** (0.065)
Constant	-1.018*** (0.360)	-2.726*** (0.606)	-0.893** (0.370)

Note:

*p<0.1; **p<0.05; ***p<0.01
 Logistic Regression
 State-Clustered Standard Errors

Table 16: Cross-national Robustness Check: Number of Ethnic Group Control

	<i>Dependent variable:</i>		
	Proportion Civilian Attacks		
	(1)	(2)	(3)
Fertility	0.120*** (0.019)		
Secondary Ratio		-0.309** (0.145)	
Legislature Female			0.019*** (0.004)
Gender Quota			-0.056 (0.077)
Civil Liberties	-0.118*** (0.022)	0.082** (0.038)	-0.101*** (0.024)
Political Rights	0.014 (0.014)	-0.023 (0.025)	0.010 (0.016)
GDP	0.072*** (0.022)	0.112*** (0.032)	0.071*** (0.020)
CINC	-4.172** (1.654)	-20.552*** (2.828)	-2.503 (2.046)
Population	-0.035 (0.025)	0.114** (0.045)	-0.045* (0.026)
War	-0.064* (0.036)	0.033 (0.062)	-0.054 (0.037)
Youth Bulge	-0.553*** (0.145)	-1.139*** (0.232)	0.020 (0.123)
Muslim Majority	0.290*** (0.045)	0.168** (0.076)	0.413*** (0.049)
Cold War	-0.183*** (0.030)	-0.093* (0.048)	-0.059 (0.037)
Total Attacks, Lagged	0.0003** (0.0001)	0.0005 (0.0004)	0.0003** (0.0001)
Total Secondary		-0.006*** (0.002)	
Proportion Civilian, Lagged	0.991*** (0.069)	0.763*** (0.117)	0.982*** (0.073)
Number Ethnic Groups	-0.007** (0.004)	0.002 (0.007)	-0.005 (0.004)
Constant	-1.141*** (0.428)	-3.534*** (0.662)	-1.455*** (0.445)

Note:

*p<0.1; **p<0.05; ***p<0.01

Logistic Regression

State-Clustered Standard Errors

Table 17: Cross-national Robustness Check: Ethnic Fractionalization Control

	<i>Dependent variable:</i>		
	Proportion Civilian Attacks		
	(1)	(2)	(3)
Fertility	0.107*** (0.020)		
Secondary Ratio		0.025 (0.151)	
Legislature Female			0.019*** (0.004)
Gender Quota			0.009 (0.073)
Civil Liberties	-0.123*** (0.022)	0.095*** (0.035)	-0.105*** (0.024)
Political Rights	0.013 (0.013)	-0.034 (0.023)	-0.007 (0.016)
GDP	0.078*** (0.021)	0.155*** (0.030)	0.089*** (0.020)
CINC	-6.126*** (1.220)	-18.674*** (2.195)	-4.295*** (1.554)
Population	-0.055** (0.025)	0.025 (0.042)	-0.086*** (0.025)
War	-0.052 (0.037)	0.063 (0.060)	-0.011 (0.039)
Youth Bulge	-0.503*** (0.143)	-1.267*** (0.219)	0.036 (0.122)
Muslim Majority	0.310*** (0.045)	0.290*** (0.075)	0.454*** (0.048)
Cold War	-0.180*** (0.031)	-0.039 (0.047)	-0.063* (0.038)
Total Attacks, Lagged	0.0003** (0.0001)	0.0004 (0.0004)	0.0002 (0.0002)
Total Secondary		-0.007*** (0.002)	
Proportion Civilian, Lagged	0.993*** (0.069)	0.667*** (0.112)	0.963*** (0.073)
Ethno-Linguistic Fractionalization	0.150*** (0.054)	0.575*** (0.101)	0.326*** (0.062)
Constant	-1.026** (0.399)	-3.426*** (0.634)	-1.314*** (0.421)

Note:

*p<0.1; **p<0.05; ***p<0.01

Logistic Regression
State-Clustered Standard Errors

Table 18: Cross-national Robustness Check: Polity 2

	<i>Dependent variable:</i>		
	Proportion Civilian Attacks		
	(1)	(2)	(3)
Fertility	0.105*** (0.027)		
Secondary Ratio		-1.520*** (0.174)	
Legislature Female			0.030*** (0.004)
Gender Quota			-0.260*** (0.075)
Polity 2	-0.005 (0.004)	0.006 (0.008)	-0.004 (0.005)
GDP	0.065** (0.032)	0.110*** (0.037)	0.034 (0.027)
CINC	-6.048*** (1.419)	-16.452*** (2.518)	-7.116*** (1.816)
Population	-0.021 (0.032)	-0.033 (0.047)	0.038 (0.033)
War	-0.187*** (0.050)	-0.200*** (0.066)	-0.257*** (0.047)
Youth Bulge	-0.429** (0.176)	-0.939*** (0.308)	-0.096 (0.141)
Muslim Majority	0.145*** (0.054)	0.078 (0.083)	0.283*** (0.056)
Cold War	-0.303*** (0.037)	-0.681*** (0.075)	-0.183*** (0.040)
Total Attacks, Lagged	0.001*** (0.0002)	0.002*** (0.001)	0.001*** (0.0002)
Total Secondary		-0.003* (0.002)	
Proportion Civilian, Lagged	1.243*** (0.083)	2.014*** (0.142)	1.183*** (0.082)
Constant	-1.741*** (0.490)	-0.207 (0.522)	-2.238*** (0.478)

Note:

*p<0.1; **p<0.05; ***p<0.01

Logistic Regression

State-Clustered Standard Errors

Table 19: Cross-national Robustness Check: Decade Dummies

	<i>Dependent variable:</i>		
	Proportion Civilian Attacks		
	(1)	(2)	(3)
Fertility	0.118*** (0.018)		
Secondary Ratio		-0.355*** (0.129)	
Legislature Female			0.012*** (0.003)
Gender Quota			-0.160** (0.063)
Civil Liberties	-0.106*** (0.020)	0.137*** (0.037)	-0.094*** (0.022)
Political Rights	0.019 (0.013)	-0.084*** (0.025)	0.016 (0.016)
GDP	0.091*** (0.019)	0.141*** (0.028)	0.078*** (0.017)
CINC	-5.047*** (1.078)	-12.833*** (2.174)	-4.036*** (1.317)
Population	-0.067*** (0.022)	-0.010 (0.041)	-0.051** (0.023)
War	-0.098*** (0.031)	0.017 (0.052)	-0.088*** (0.032)
Youth Bulge	-0.571*** (0.125)	-0.716*** (0.205)	-0.059 (0.110)
Muslim Majority	0.315*** (0.043)	0.163** (0.070)	0.377*** (0.045)
Total Attacks, Lagged	0.0004*** (0.0001)	0.0004 (0.0004)	0.0004*** (0.0001)
Total Secondary Ratio		-0.003 (0.002)	
Proportion Civilian, Lagged	0.970*** (0.062)	0.867*** (0.107)	0.972*** (0.064)
1980s	-0.250*** (0.037)	-0.200*** (0.067)	-0.122*** (0.045)
1990s	-0.163*** (0.035)	-0.226*** (0.063)	-0.135*** (0.037)
Constant	-1.049*** (0.367)	-2.674*** (0.598)	-1.331*** (0.372)

Note:

*p<0.1; **p<0.05; ***p<0.01

Logistic Regression
State-Clustered Standard Errors

Table 20: Cross-national Robustness Check: Oil Rents Control

	<i>Dependent variable:</i>		
	Proportion Civilian Attacks		
	(1)	(2)	(3)
Fertility	0.089*** (0.019)		
Secondary Ratio		-0.399*** (0.150)	
Legislature Female			0.011*** (0.003)
Gender Quota			-0.185** (0.073)
Civil Liberties	-0.120*** (0.023)	0.100** (0.040)	-0.104*** (0.026)
Political Rights	0.015 (0.016)	-0.067** (0.029)	0.010 (0.020)
GDP	0.104*** (0.021)	0.119*** (0.032)	0.086*** (0.021)
CINC	-5.690*** (1.274)	-13.639*** (2.464)	-4.917*** (1.546)
Population	-0.056** (0.025)	0.023 (0.043)	-0.041 (0.028)
War	-0.074** (0.035)	-0.027 (0.061)	-0.057 (0.038)
Youth Bulge	-0.480*** (0.149)	-0.665*** (0.247)	-0.125 (0.130)
Muslim Majority	0.335*** (0.046)	0.113 (0.081)	0.391*** (0.049)
Cold War	-0.147*** (0.031)	-0.202*** (0.055)	-0.063* (0.038)
Total Attacks, Lagged	0.001*** (0.0001)	0.001* (0.0004)	0.0004*** (0.0002)
Total Secondary Ratio		-0.002 (0.002)	
Proportion Civilian, Lagged	0.932*** (0.071)	0.965*** (0.123)	0.945*** (0.075)
Oil Rents	0.004* (0.002)	-0.002 (0.002)	0.004** (0.002)
Constant	-1.578*** (0.417)	-2.785*** (0.718)	-1.666*** (0.430)

Note:

*p<0.1; **p<0.05; ***p<0.01

Logistic Regression

State-Clustered Standard Errors

Table 21: Cross-National Robustness Check: Sabrina Karim and Daniel Hill Women's Rights Measure

	<i>Dependent variable:</i>		
	(1)	(2)	(3)
Women's Rights	0.27*** (0.03)		
Women's Political Inclusion		-0.12*** (0.02)	
Women's Security			-0.26*** (0.04)
Civil Liberties	-0.07*** (0.02)	-0.14*** (0.02)	-0.15*** (0.02)
Political Rights	0.05*** (0.02)	0.05*** (0.02)	0.04*** (0.01)
GDP	0.05** (0.02)	0.11*** (0.02)	0.14*** (0.02)
CINC	-3.08*** (1.19)	-5.36*** (1.16)	-5.08*** (1.10)
Population	-0.05** (0.02)	-0.09*** (0.02)	-0.11*** (0.02)
War	-0.14*** (0.03)	-0.09*** (0.03)	-0.09*** (0.03)
Youth Bulge	0.31** (0.12)	-0.08 (0.12)	-0.44*** (0.13)
Muslim Majority	0.26*** (0.04)	0.28*** (0.05)	0.37*** (0.04)
Cold War	-0.13*** (0.03)	-0.23*** (0.03)	-0.22*** (0.03)
Total Attacks, lagged	0.001*** (0.0001)	0.001*** (0.0001)	0.001*** (0.0001)
Constant	-0.75** (0.36)	-0.79** (0.38)	-0.73* (0.38)

Note: *p<0.1; **p<0.05; ***p<0.01

Table 22: Cross-National Robustness Check: Alternative Independent Variables

	<i>Dependent variable:</i>	
	(1)	(2)
Maternal Mortality	0.001*** (0.0001)	
School Enrollment Gender Parity		-0.89*** (0.23)
Civil Liberties	0.03 (0.03)	0.10*** (0.03)
Political Rights	0.002 (0.02)	-0.06*** (0.02)
GDP	0.25*** (0.02)	0.13*** (0.03)
CINC	-6.41*** (1.48)	-15.33*** (2.06)
Population	-0.20*** (0.03)	-0.0004 (0.04)
War	-0.13*** (0.04)	-0.02 (0.05)
Youth Bulge	0.04 (0.15)	-0.85*** (0.21)
Muslim Majority	0.10** (0.04)	0.07 (0.07)
Cold War	-0.07 (0.05)	-0.17*** (0.04)
Total Secondary		-0.003* (0.002)
Total Attacks, lagged	0.001*** (0.0002)	0.001 (0.0004)
Ratio Civilian Attacks, lagged	1.01*** (0.07)	1.02*** (0.10)
Constant	-3.43*** (0.44)	-1.88*** (0.58)

Note: *p<0.1; **p<0.05; ***p<0.01

Table 23: Cross-National Robustness Checks: Interactions

Fertility	0.181*** (0.020)			
Ratio Secondary		-1.172*** (0.143)		
Legislature Female			0.015*** (0.003)	0.012*** (0.003)
Gender Quota			0.377*** (0.083)	-0.157 (0.106)
Muslim Majority	0.860*** (0.089)	-1.652*** (0.175)	0.432*** (0.052)	0.353*** (0.043)
Civil Liberties	-0.140*** (0.020)	0.136*** (0.033)	-0.103*** (0.023)	-0.110*** (0.023)
Political Liberties	0.032** (0.013)	-0.116*** (0.021)	0.020 (0.017)	0.023 (0.017)
GDP	0.083*** (0.019)	0.123*** (0.026)	0.063*** (0.017)	0.069*** (0.018)
CINC	-5.464*** (1.092)	-15.000*** (2.149)	-3.817*** (1.374)	-3.899*** (1.388)
Population	-0.052** (0.021)	-0.021 (0.038)	-0.039* (0.023)	-0.046* (0.024)
War	-0.152*** (0.030)	-0.097* (0.051)	-0.120*** (0.034)	-0.100*** (0.033)
Cold War	-0.232*** (0.026)	-0.225*** (0.043)	-0.071** (0.034)	-0.101*** (0.034)
Youth Bulge	-0.767*** (0.132)	-0.819*** (0.207)	-0.126 (0.111)	-0.052 (0.114)
Total Attacks, Lagged	0.001*** (0.0001)	0.001 (0.0003)	0.001*** (0.0001)	0.0004*** (0.0001)
Total Secondary		-0.004** (0.001)		
Proportion Civilian, Lagged	0.923*** (0.060)	0.950*** (0.103)	0.970*** (0.063)	0.987*** (0.064)
Fertility*Muslim Majority	-0.134*** (0.020)			
Ratio Secondary*Muslim Majority		2.109*** (0.223)		
Legislature Percent*Muslim Majority			0.005 (0.006)	
Gender Quota*Muslim Majority			-0.795*** (0.121)	
Legislature Percent*Gender Quota				0.001 (0.006)
Constant	-1.043*** (0.363)	-0.990** (0.501)	-1.198*** (0.362)	-1.234*** (0.370)

Note:

*p<0.1; **p<0.05; ***p<0.01

State-Clustered Standard Errors and Logistic Regression

Table 24: Cross-National Negative Binomial: Secondary School Ratios

	<i>Dependent variable:</i>		
	Civilian Attacks	Non-Civilian Attacks	Total Attacks
	(1)	(2)	(3)
Secondary Female	1.53** (0.63)	2.01*** (0.60)	1.62*** (0.58)
CINC	49.33*** (18.18)	78.69*** (14.14)	77.44*** (14.71)
Civil Liberties	0.03 (0.08)	-0.08 (0.08)	0.01 (0.07)
Political Rights	0.08 (0.06)	0.16*** (0.06)	0.12** (0.06)
GDP	-0.56*** (0.14)	-0.51*** (0.14)	-0.55*** (0.13)
Population	0.10 (0.48)	-0.94* (0.48)	-0.61 (0.43)
War	0.45*** (0.15)	0.32** (0.14)	0.35** (0.14)
Youth Bulge	1.86*** (0.52)	1.84*** (0.53)	1.85*** (0.47)
Muslim Majority	1.38* (0.73)	0.22 (0.56)	0.43 (0.56)
Cold War	-0.31** (0.14)	-0.28** (0.14)	-0.39*** (0.13)
Civilian Attacks, lagged	0.03*** (0.002)		
Non-Civilian Attacks, lagged		0.02*** (0.002)	
Total Attacks, lagged			0.01*** (0.001)
Constant	9.46 (7.89)	23.52*** (8.04)	21.06*** (7.18)
State Fixed Effects	X	X	X
Observations	2,481	2,481	2,481
Log Likelihood	-3,222.64	-3,274.99	-4,256.91
θ	0.55*** (0.03)	0.61*** (0.03)	0.53*** (0.03)
Akaike Inf. Crit.	6,769.29	6,873.98	8,837.82

Note:

*p<0.1; **p<0.05; ***p<0.01

Table 25: Cross-National Negative Binomial: Women's Legislative Representation

	<i>Dependent variable:</i>		
	Civilian Attacks	Non-Civilian Attacks	Total Attacks
	(1)	(2)	(3)
Female Legislature	-0.04*** (0.01)	-0.04*** (0.01)	-0.04*** (0.01)
Gender Quota	0.23 (0.18)	0.05 (0.18)	0.14 (0.17)
CINC	35.32** (15.28)	43.67*** (12.56)	43.01*** (12.52)
Civil Liberties	0.01 (0.06)	-0.04 (0.06)	0.01 (0.06)
Political Rights	0.08* (0.05)	0.11** (0.05)	0.07 (0.05)
GDP	-0.43*** (0.11)	-0.43*** (0.11)	-0.45*** (0.11)
Population	-0.41 (0.39)	-1.13*** (0.39)	-0.80** (0.35)
War	0.65*** (0.12)	0.56*** (0.12)	0.60*** (0.11)
Youth Bulge	0.87** (0.44)	0.59 (0.44)	1.00** (0.40)
Muslim Majority	2.58*** (0.97)	0.94 (0.63)	1.32** (0.62)
Cold War	-0.35*** (0.12)	-0.51*** (0.12)	-0.51*** (0.11)
Total Attacks, lagged	0.01*** (0.002)	0.02*** (0.003)	0.01*** (0.001)
Civilian Attacks, lagged	0.01*** (0.005)		
Non-Civilian Attacks, lagged		-0.01* (0.005)	
Constant	17.78*** (6.65)	28.92*** (6.73)	25.11*** (6.03)
State Fixed Effects	X	X	X
Observations	3,314	3,314	3,314
Log Likelihood	-4,418.56	-4,623.08	-5,902.47
θ	0.56*** (0.03)	0.56*** (0.03)	0.53*** (0.02)
Akaike Inf. Crit.	9,171.11	9,580.16	12,136.93

Note:

*p<0.1; **p<0.05; ***p<0.01

Table 26: Sub-National Robustness Checks: Additional Controls

	<i>Dependent variable:</i>					
	Proportion Civilian Attacks					
	(1)	(2)	(3)	(4)	(5)	(6)
Reservation Years	-0.04** (0.02)	-0.05*** (0.02)	-0.04** (0.02)	-0.04** (0.02)	-0.08*** (0.03)	-0.04** (0.02)
Population	0.00** (0.00)	0.00*** (0.00)	0.00** (0.00)	0.00 (0.00)	-0.00 (0.00)	0.00** (0.00)
GDP	-0.00 (0.00)	-0.00*** (0.00)	-0.00*** (0.00)	0.00 (0.00)	0.00 (0.00)	-0.00 (0.00)
Insurgency	-0.16 (0.12)	-0.18 (0.12)	-0.26** (0.10)	-0.15 (0.12)	-0.56*** (0.14)	-0.16 (0.12)
Number of Elections	0.09** (0.04)	0.15*** (0.05)	0.18*** (0.05)	0.09* (0.05)	0.06 (0.06)	0.09** (0.04)
Total Attacks	-0.001 (0.001)	-0.001 (0.001)	0.001 (0.001)	-0.0005 (0.001)	-0.002 (0.002)	-0.001 (0.001)
Proportion Civilian Attacks, lagged	0.14 (0.21)	0.10 (0.21)	-0.13 (0.20)	0.06 (0.22)	0.87*** (0.32)	0.14 (0.21)
Percent Female Pop		4.74** (1.90)				
Murder Rate			-7.96*** (1.44)			
Percent Rural				1.94** (0.86)		
Murders					-0.0001 (0.001)	
Constant	-0.22 (0.14)	-4.49*** (1.71)	0.33** (0.15)	-1.77*** (0.67)	-0.05 (0.19)	-0.22 (0.14)

Note:

*p<0.1; **p<0.05; ***p<0.01
Logistic Regression
State-clustered Standard Errors

Table 27: Sub-national Negative Binomial Robustness Check: State-Year Fixed Effects

	<i>Dependent variable:</i>		
	Number of Civilian Attacks		
	(1)	(2)	(3)
Reservation Years	-0.11*** (0.02)	-0.08*** (0.02)	-0.19*** (0.03)
Number of Non-civilian Attacks, Lagged	0.07*** (0.01)	0.05*** (0.01)	0.06*** (0.01)
Number of Civilian Attacks, Lagged	0.02* (0.01)	0.01 (0.01)	0.02** (0.01)
Country Fixed Effects		X	
State Fixed Effects			X
Constant	0.30** (0.12)	0.25 (0.29)	0.08 (0.37)
Observations	366	366	366
Log Likelihood	-591.86	-541.12	-566.49
θ	0.57*** (0.07)	1.16*** (0.19)	0.76*** (0.10)
Akaike Inf. Crit.	1,191.72	1,122.24	1,182.99

Note:

*p<0.1; **p<0.05; ***p<0.01
 Negative Binomial Regression
 State-clustered Standard Errors

Table 28: Sub-national Negative Binomial Robustness Check: Additional Controls

	<i>Dependent variable:</i>		
	Number of Civilian Attacks		
	(1)	(2)	(3)
Reservation Years	-0.094** (0.039)	-0.075** (0.034)	-0.079** (0.037)
Number Attacks Noncivilian	0.047*** (0.007)	0.048*** (0.007)	0.047*** (0.007)
Population	-0.00000* (0.00000)	-0.00000 (0.00000)	-0.00000 (0.00000)
GDP	0.000 (0.000)	0.000 (0.000)	0.000 (0.000)
Insurgency	0.523 (0.351)	0.503 (0.338)	0.493 (0.335)
Number of Elections	0.124 (0.098)	0.055 (0.078)	0.052 (0.077)
Number of Civilian Attacks, Lagged	0.003 (0.010)	0.003 (0.011)	0.003 (0.010)
Percent Female	24.024 (19.167)		
Murder Rate		-2.051 (7.387)	
Percent Rural			-2.265 (5.396)
State Fixed Effects	X	X	X

Note:

*p<0.1; **p<0.05; ***p<0.01
 Negative Binomial Regression
 State-clustered Standard Errors

Table 29: Alternate DV: Water and Food Coded as Civilian

	<i>Dependent variable:</i>					
	Proportion Civilian Attacks					
	(1)	(2)	(3)	(4)	(5)	(6)
Fertility	0.17*** (0.04)			0.11*** (0.04)		
Secondary Ratio		-0.55** (0.28)			-0.56** (0.26)	
Legislature Female			0.02*** (0.01)			0.01** (0.01)
Gender Quota			-0.21 (0.14)			-0.16 (0.13)
Civil Liberties	-0.17*** (0.05)	0.17* (0.09)	-0.15*** (0.05)	-0.14*** (0.04)	0.11 (0.08)	-0.11** (0.05)
Political Rights	0.05* (0.03)	-0.09 (0.06)	0.05 (0.04)	0.03 (0.03)	-0.05 (0.05)	0.02 (0.04)
GDP	0.14*** (0.04)	0.19*** (0.08)	0.11*** (0.04)	0.08** (0.04)	0.13* (0.07)	0.07* (0.04)
CINC	-4.99** (2.38)	-18.49*** (5.02)	-4.31 (2.76)	-5.06** (2.47)	-16.35*** (5.16)	-4.66 (2.87)
Population	-0.09* (0.05)	0.05 (0.10)	-0.06 (0.05)	-0.05 (0.05)	0.07 (0.09)	-0.03 (0.05)
War	-0.11 (0.07)	0.08 (0.13)	-0.11 (0.07)	-0.10 (0.07)	0.001 (0.12)	-0.08 (0.07)
Youth Bulge	-0.61** (0.31)	-0.62 (0.58)	0.04 (0.26)	-0.44 (0.27)	-0.42 (0.52)	-0.02 (0.23)
Muslim Majority	0.35*** (0.09)		0.45*** (0.10)	0.28*** (0.08)		0.34*** (0.09)
Cold War	-0.26*** (0.06)		-0.10 (0.08)	-0.20*** (0.06)		-0.09 (0.07)
Total Attacks	0.001*** (0.0002)	0.0001 (0.001)	0.001*** (0.0003)	0.001*** (0.0002)	0.0002 (0.001)	0.001** (0.0002)
Total Secondary Ratio		-0.002 (0.005)			0.0004 (0.004)	
Proportion Civilian				1.26*** (0.14)	1.32*** (0.28)	1.30*** (0.14)
Constant	-1.36 (0.84)	-4.77*** (1.73)	-1.65** (0.83)	-1.48* (0.78)	-4.55*** (1.63)	-1.77** (0.78)

Note:

*p<0.1; **p<0.05; ***p<0.01
Logistic Regression
State-clustered Standard Errors

Table 30: Alternate DV: Food and Water Coded as Civilian

	<i>Dependent variable:</i>	
	Proportion Civilian Attacks	
	(1)	(2)
Reservation Years	−0.060*** (0.023)	−0.036** (0.018)
Population	0.000* (0.000)	0.000** (0.000)
GDP	−0.000 (0.000)	−0.000 (0.000)
Insurgency	−0.159 (0.150)	−0.145 (0.118)
Number of Elections	0.154*** (0.052)	0.094** (0.046)
totalattackslag	−0.001 (0.001)	
Total Attacks		−0.001 (0.001)
Proportion Civilian		−0.001 (0.001)
Constant	−0.166 (0.130)	−0.184* (0.106)

Note: *p<0.1; **p<0.05; ***p<0.01
 Logistic Regression
 State-clustered Standard Errors

Table 31: Alternate DV: Telecommuniccations Coded as Civilian

	<i>Dependent variable:</i>					
	Proportion Civilian Attacks					
	(1)	(2)	(3)	(4)	(5)	(6)
Fertility	0.16*** (0.04)			0.11*** (0.04)		
Secondary Ratio		-0.54** (0.27)			-0.57** (0.25)	
Legislature Female			0.02*** (0.01)			0.01** (0.01)
Gender Quota			-0.21 (0.14)			-0.16 (0.13)
Civil Liberties	-0.17*** (0.05)	0.17* (0.09)	-0.15*** (0.05)	-0.13*** (0.04)	0.11 (0.08)	-0.12** (0.05)
Political Rights	0.05 (0.03)	-0.09 (0.06)	0.04 (0.04)	0.03 (0.03)	-0.06 (0.05)	0.02 (0.03)
GDP	0.13*** (0.04)	0.20*** (0.07)	0.11*** (0.04)	0.09** (0.04)	0.14** (0.07)	0.07* (0.04)
CINC	-4.42* (2.37)	-17.47*** (4.96)	-4.03 (2.74)	-4.53* (2.44)	-15.77*** (5.13)	-4.39 (2.83)
Population	-0.10** (0.05)	0.03 (0.10)	-0.07 (0.05)	-0.06 (0.05)	0.05 (0.09)	-0.04 (0.05)
War	-0.10 (0.07)	0.09 (0.13)	-0.10 (0.07)	-0.09 (0.07)	0.02 (0.12)	-0.07 (0.07)
Youth Bulge	-0.58** (0.30)	-0.49 (0.51)	0.07 (0.25)	-0.41 (0.26)	-0.31 (0.47)	0.02 (0.22)
Muslim Majority	0.35*** (0.09)		0.45*** (0.09)	0.28*** (0.08)		0.34*** (0.08)
Cold War	-0.25*** (0.06)		-0.11 (0.07)	-0.20*** (0.06)		-0.09 (0.07)
Total Attacks	0.001*** (0.0002)	0.0000 (0.001)	0.001** (0.0003)	0.001*** (0.0002)	0.0002 (0.001)	0.001** (0.0003)
Total Secondary Ratio		-0.002 (0.005)			0.001 (0.004)	
Proportion Civilian				1.22*** (0.13)	1.22*** (0.26)	1.25*** (0.13)
Constant	-1.05 (0.83)	-4.57*** (1.70)	-1.47* (0.82)	-1.26 (0.77)	-4.46*** (1.62)	-1.67** (0.78)

Note:

*p<0.1; **p<0.05; ***p<0.01
Logistic Regression
State-clustered Standard Errors

Table 32: Alternate DV: Telecommunications

	<i>Dependent variable:</i>	
	Proportion Civilian Attacks	
	(1)	(2)
Reservation Years	-0.049** (0.021)	-0.029* (0.017)
Population	0.000* (0.000)	0.000** (0.000)
GDP	-0.000 (0.000)	-0.000 (0.000)
Insurgency	-0.122 (0.146)	-0.116 (0.116)
Number of Elections	0.142*** (0.049)	0.084* (0.044)
totalattackslag	-0.002 (0.001)	
Total Attacks		-0.001 (0.001)
Proportion Civilian		-0.001 (0.001)
Constant	-0.174 (0.130)	-0.187* (0.106)

Note: *p<0.1; **p<0.05; ***p<0.01
 Logistic Regression
 State-clustered Standard Errors

Table 33: Alternate DV: Transportation Coded as Civilian

	<i>Dependent variable:</i>					
	Proportion Civilian Attacks					
	(1)	(2)	(3)	(4)	(5)	(6)
Fertility	0.12*** (0.04)			0.07* (0.04)		
Secondary Ratio		0.004 (0.27)			-0.13 (0.24)	
Legislature Female			0.02** (0.01)			0.01 (0.01)
Gender Quota			-0.34** (0.15)			-0.24* (0.13)
Civil Liberties	-0.06 (0.05)	0.26*** (0.10)	-0.04 (0.05)	-0.05 (0.05)	0.19** (0.09)	-0.03 (0.05)
Political Rights	0.02 (0.03)	-0.12* (0.06)	-0.01 (0.04)	0.001 (0.03)	-0.10 (0.06)	-0.02 (0.04)
GDP	0.10** (0.04)	0.17** (0.07)	0.07 (0.04)	0.05 (0.04)	0.13** (0.06)	0.04 (0.04)
CINC	1.94 (2.89)	-0.39 (5.25)	0.73 (3.01)	1.05 (2.57)	-0.45 (4.99)	0.35 (2.71)
Population	-0.10* (0.05)	-0.06 (0.10)	-0.04 (0.06)	-0.06 (0.05)	-0.04 (0.10)	-0.02 (0.05)
War	-0.15** (0.08)	0.05 (0.12)	-0.15* (0.08)	-0.12* (0.07)	0.01 (0.12)	-0.11 (0.07)
Youth Bulge	-0.64** (0.31)	-0.13 (0.62)	-0.13 (0.26)	-0.43 (0.27)	-0.03 (0.53)	-0.13 (0.22)
Muslim Majority	0.27*** (0.09)		0.42*** (0.10)	0.22** (0.09)		0.29*** (0.09)
Cold War	-0.13** (0.06)		-0.04 (0.08)	-0.13** (0.06)		-0.06 (0.08)
Total Attacks	0.001** (0.0002)	-0.001 (0.001)	0.0003 (0.0003)	0.0005** (0.0002)	-0.001 (0.001)	0.0003 (0.0003)
Total Secondary Ratio		0.0002 (0.004)			0.001 (0.004)	
Proportion Civilian				1.41*** (0.15)	1.20*** (0.31)	1.49*** (0.15)
Constant	-0.18 (0.93)	-3.41* (1.81)	-0.77 (0.90)	-0.50 (0.83)	-3.28* (1.67)	-0.95 (0.80)

Note:

*p<0.1; **p<0.05; ***p<0.01
 Logistic Regression
 State-clustered Standard Errors

Table 34: Alternate DV: Transportation Coded as Civilian

	<i>Dependent variable:</i>	
	Proportion Civilian Attacks	
	(1)	(2)
Reservation Years	-0.102*** (0.027)	-0.063*** (0.023)
Population	0.000 (0.000)	0.000 (0.000)
GDP	0.000 (0.000)	0.000 (0.000)
Insurgency	-0.280* (0.167)	-0.249* (0.130)
Number of Elections	0.264*** (0.075)	0.130* (0.072)
totalattackslag	-0.001 (0.002)	
Total Attacks		-0.001 (0.001)
Proportion Civilian		-0.001** (0.001)
Constant	0.023 (0.130)	0.007 (0.102)

Note: *p<0.1; **p<0.05; ***p<0.01
 Logistic Regression
 State-clustered Standard Errors

Table 35: Alternate DV: Utilities Coded as Civilian

	<i>Dependent variable:</i>					
	Proportion Civilian Attacks					
	(1)	(2)	(3)	(4)	(5)	(6)
Fertility	0.10** (0.04)			0.06 (0.04)		
Secondary Ratio		0.11 (0.30)			-0.04 (0.27)	
Legislature Female			0.04*** (0.01)			0.03*** (0.01)
Gender Quota			-0.29** (0.14)			-0.22* (0.13)
Civil Liberties	-0.07 (0.06)	0.23** (0.09)	-0.002 (0.06)	-0.04 (0.05)	0.19** (0.09)	0.01 (0.06)
Political Rights	0.03 (0.04)	-0.11* (0.07)	-0.03 (0.05)	0.02 (0.04)	-0.09 (0.07)	-0.04 (0.05)
GDP	0.19*** (0.05)	0.16* (0.08)	0.17*** (0.05)	0.13*** (0.04)	0.10 (0.08)	0.12*** (0.04)
CINC	0.49 (3.03)	-2.27 (5.66)	0.52 (3.59)	-0.93 (2.97)	-3.30 (6.31)	-1.14 (3.53)
Population	-0.32*** (0.06)	-0.26** (0.11)	-0.29*** (0.07)	-0.22*** (0.05)	-0.18* (0.10)	-0.20*** (0.06)
War	0.18** (0.08)	0.07 (0.14)	0.30*** (0.08)	0.13* (0.07)	-0.01 (0.13)	0.23*** (0.08)
Youth Bulge	0.29 (0.32)	-0.05 (0.60)	0.68** (0.32)	0.23 (0.29)	0.08 (0.52)	0.46* (0.28)
Muslim Majority	0.01 (0.10)		0.17* (0.10)	0.002 (0.09)		0.11 (0.09)
Cold War	-0.03 (0.08)		0.18** (0.08)	-0.01 (0.07)		0.16** (0.07)
Total Attacks	0.0005 (0.0003)	0.002 (0.001)	0.0000 (0.0003)	0.0002 (0.0003)	0.001 (0.001)	-0.0001 (0.0003)
Total Secondary Ratio		0.001 (0.01)			0.004 (0.01)	
Proportion Civilian				1.31*** (0.16)	1.29*** (0.27)	1.25*** (0.15)
Constant	0.22 (1.07)	0.01 (1.56)	-0.38 (0.97)	-0.43 (0.90)	-0.77 (1.45)	-0.97 (0.86)

Note:

*p<0.1; **p<0.05; ***p<0.01
 Logistic Regression
 State-clustered Standard Errors

Table 36: Alternate DV: Utilities Coded as Civilian

	<i>Dependent variable:</i>	
	Proportion Civilian Attacks	
	(1)	(2)
Reservation Years	-0.059** (0.025)	-0.037** (0.019)
Population	0.000 (0.000)	0.000* (0.000)
GDP	-0.000 (0.000)	-0.000 (0.000)
Insurgency	-0.227 (0.158)	-0.215* (0.123)
Number of Elections	0.149*** (0.054)	0.087* (0.046)
totalattackslag	-0.002 (0.001)	
Total Attacks		-0.001 (0.001)
Proportion Civilian		-0.001 (0.001)
Constant	-0.047 (0.141)	-0.074 (0.113)

Note: *p<0.1; **p<0.05; ***p<0.01
 Logistic Regression
 State-clustered Standard Errors

Table 37: Alternate DV: Private Citizens Coded as Non-Civilian

	<i>Dependent variable:</i>					
	Proportion Civilian Attacks					
	(1)	(2)	(3)	(4)	(5)	(6)
Fertility	0.03 (0.04)			-0.005 (0.04)		
Secondary Ratio		-0.84*** (0.31)			-0.65* (0.34)	
Legislature Female			-0.01* (0.01)			-0.01 (0.01)
Gender Quota			-0.44** (0.19)			-0.38** (0.17)
Civil Liberties	-0.04 (0.05)	0.10 (0.10)	-0.10** (0.05)	-0.01 (0.05)	0.09 (0.10)	-0.07 (0.05)
Political Rights	-0.07* (0.04)	-0.13** (0.06)	-0.06 (0.04)	-0.07* (0.04)	-0.13* (0.07)	-0.06 (0.04)
GDP	0.14*** (0.04)	0.26*** (0.06)	0.18*** (0.04)	0.08* (0.04)	0.17*** (0.06)	0.12*** (0.04)
CINC	-11.61*** (2.97)	-18.57*** (5.52)	-12.59*** (3.23)	-10.48*** (2.60)	-15.62*** (4.88)	-11.03*** (2.91)
Population	-0.06 (0.06)	-0.12 (0.10)	-0.06 (0.06)	-0.002 (0.05)	-0.04 (0.10)	-0.02 (0.05)
War	0.09 (0.10)	-0.03 (0.14)	0.06 (0.09)	0.04 (0.09)	-0.11 (0.15)	0.04 (0.09)
Youth Bulge	-0.70** (0.30)	-1.00** (0.49)	-0.26 (0.23)	-0.47* (0.27)	-0.66 (0.46)	-0.19 (0.22)
Muslim Majority	0.25** (0.12)		0.38*** (0.11)	0.15 (0.11)		0.26** (0.10)
Cold War	0.39*** (0.08)		0.27*** (0.08)	0.33*** (0.07)		0.23*** (0.07)
Total Attacks	-0.0002 (0.0005)	0.002* (0.001)	0.0001 (0.0004)	-0.0002 (0.0004)	0.001 (0.001)	0.0000 (0.0004)
Total Secondary Ratio		-0.003 (0.004)			-0.001 (0.004)	
Proportion Civilian				1.63*** (0.17)	1.29*** (0.31)	1.48*** (0.17)
Constant	-2.70*** (0.88)	-3.29** (1.62)	-3.71*** (0.82)	-2.85*** (0.82)	-3.42** (1.59)	-3.67*** (0.79)

Note:

*p<0.1; **p<0.05; ***p<0.01
Logistic Regression
State-clustered Standard Errors

Table 38: Alternate DV: Private Citizens as Non-civilian

	<i>Dependent variable:</i>	
	Proportion Civilian Attacks	
	(1)	(2)
Reservation Years	-0.128*** (0.034)	-0.063** (0.028)
Population	-0.000* (0.000)	-0.000 (0.000)
GDP	0.000*** (0.000)	0.000*** (0.000)
Insurgency	0.171 (0.166)	0.114 (0.129)
Number of Elections	-0.013 (0.095)	-0.065 (0.069)
totalattackslag	-0.001 (0.002)	
Total Attacks		-0.002 (0.001)
Proportion Civilian		0.006 (0.004)
Constant	-1.951*** (0.182)	-1.896*** (0.129)

Note: *p<0.1; **p<0.05; ***p<0.01
 Logistic Regression
 State-clustered Standard Errors

Table 39: Alternate DV: Media Recoded as Non-civilian

	<i>Dependent variable:</i>					
	Proportion Civilian Attacks					
	(1)	(2)	(3)	(4)	(5)	(6)
Fertility	0.17*** (0.04)			0.12*** (0.04)		
Secondary Ratio		-0.54* (0.28)			-0.55** (0.26)	
Legislature Female			0.02*** (0.01)			0.01** (0.01)
Gender Quota			-0.13 (0.14)			-0.10 (0.14)
Civil Liberties	-0.16*** (0.05)	0.14 (0.09)	-0.14*** (0.05)	-0.13*** (0.04)	0.08 (0.09)	-0.11** (0.05)
Political Rights	0.05 (0.03)	-0.08 (0.06)	0.04 (0.04)	0.04 (0.03)	-0.04 (0.05)	0.02 (0.04)
GDP	0.13*** (0.04)	0.15** (0.08)	0.10** (0.04)	0.09** (0.04)	0.12 (0.08)	0.07* (0.04)
CINC	-5.45** (2.41)	-18.44*** (5.14)	-4.74* (2.79)	-5.41** (2.48)	-16.22*** (5.23)	-4.97* (2.89)
Population	-0.07 (0.05)	0.09 (0.10)	-0.03 (0.06)	-0.03 (0.05)	0.09 (0.09)	-0.01 (0.05)
War	-0.12 (0.07)	0.05 (0.13)	-0.10 (0.07)	-0.10 (0.07)	0.01 (0.13)	-0.07 (0.07)
Youth Bulge	-0.75** (0.31)	-0.82 (0.60)	-0.09 (0.26)	-0.53* (0.28)	-0.51 (0.56)	-0.08 (0.24)
Muslim Majority	0.35*** (0.09)		0.43*** (0.10)	0.28*** (0.09)		0.32*** (0.09)
Cold War	-0.26*** (0.06)		-0.09 (0.08)	-0.21*** (0.06)		-0.07 (0.07)
Total Attacks	0.001*** (0.0002)	0.0001 (0.001)	0.001*** (0.0003)	0.001*** (0.0002)	0.0002 (0.001)	0.001** (0.0003)
Total Secondary Ratio		-0.003 (0.005)			-0.0000 (0.005)	
Proportion Civilian				1.19*** (0.14)	1.25*** (0.28)	1.23*** (0.14)
Constant	-1.68** (0.80)	-4.31** (1.87)	-1.97** (0.81)	-1.81** (0.77)	-4.37** (1.83)	-2.11*** (0.78)

Note:

*p<0.1; **p<0.05; ***p<0.01
Logistic Regression
State-clustered Standard Errors

Table 40: Recoded DV: Media Recoded as Non-Civilian

	<i>Dependent variable:</i>	
	Proportion Civilian Attacks	
	(1)	(2)
Reservation Years	-0.048** (0.024)	-0.026 (0.018)
Population	0.000** (0.000)	0.000*** (0.000)
GDP	-0.000 (0.000)	-0.000* (0.000)
sup Insurgency	-0.130 (0.160)	-0.116 (0.126)
Number of Elections	0.161*** (0.054)	0.096** (0.047)
totalattackslag	-0.002 (0.001)	
Total Attacks		-0.002 (0.001)
Proportion Civilian		-0.001 (0.001)
Constant	-0.219 (0.134)	-0.241** (0.112)

Note:

*p<0.1; **p<0.05; ***p<0.01
 Logistic Regression
 State-clustered Standard Errors