

SUPPLEMENTARY MATERIAL

Phytochemical investigation of the needles of *Abies nebrodensis* (Lojac.) Mattei

Rosario Schicchi,^a Anna Geraci,^b Sergio Rosselli,^{*a} Alberto Spinella,^c Antonella Maggio,^b and Maurizio Bruno^b

^a *Department of Agricultural and Forest Sciences (SAF), University of Palermo, Viale delle Scienze, Parco d'Orleans II, IT-90128 Palermo, Italy*

^b *Department of Biological, Chemical and Pharmaceutical Sciences and Technologies (STEBICEF), University of Palermo, Italy*

^c *Advanced Technologies Network Center, Viale delle Scienze, I-90128 Palermo, Italy*

Abies nebrodensis (Lojac.) Mattei (Pinaceae) is a species living in a very small population only in a confined area of Sicily. In this study the dichloromethane extract of the leaves was analyzed. Apart from three already known metabolites namely dehydroabietic acid; maltol; and rheosmin, previously detected in other species of *Abies*, a lanostane derivative was isolated. Its chemical structure was elucidated by means of extensive spectroscopic methods.

Keywords: *Abies nebrodensis*; Lanostane; Dehydroabietic acid; Maltol; Rheosmin

Content

- Figure S1.** Structure and selected ROESY correlations for **1**
- Figure S2.** IR spectrum of compound **1**
- Figure S3.** HR-Mass spectrum of compound **1**
- Figure S4.** ^1H NMR spectrum of **1** recorded in CDCl_3 at 400 MHz
- Figure S5.** ^{13}C NMR spectrum of **1** recorded in CDCl_3 at 100 MHz
- Figure S6.** DEPT spectrum of **1** recorded in CDCl_3
- Figure S7.** HSQC spectrum of **1** recorded in CDCl_3
- Figure S8.** HMBC spectrum of **1** recorded in CDCl_3
- Figure S9.** HSQC-TOCSY spectrum of **1** recorded in CDCl_3
- Figure S10.** ROESY spectrum of **1** recorded in CDCl_3

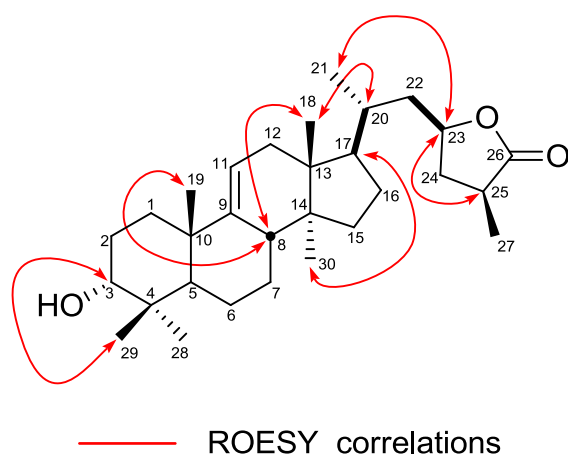


Figure S1. Structure and selected ROESY correlations for **1**

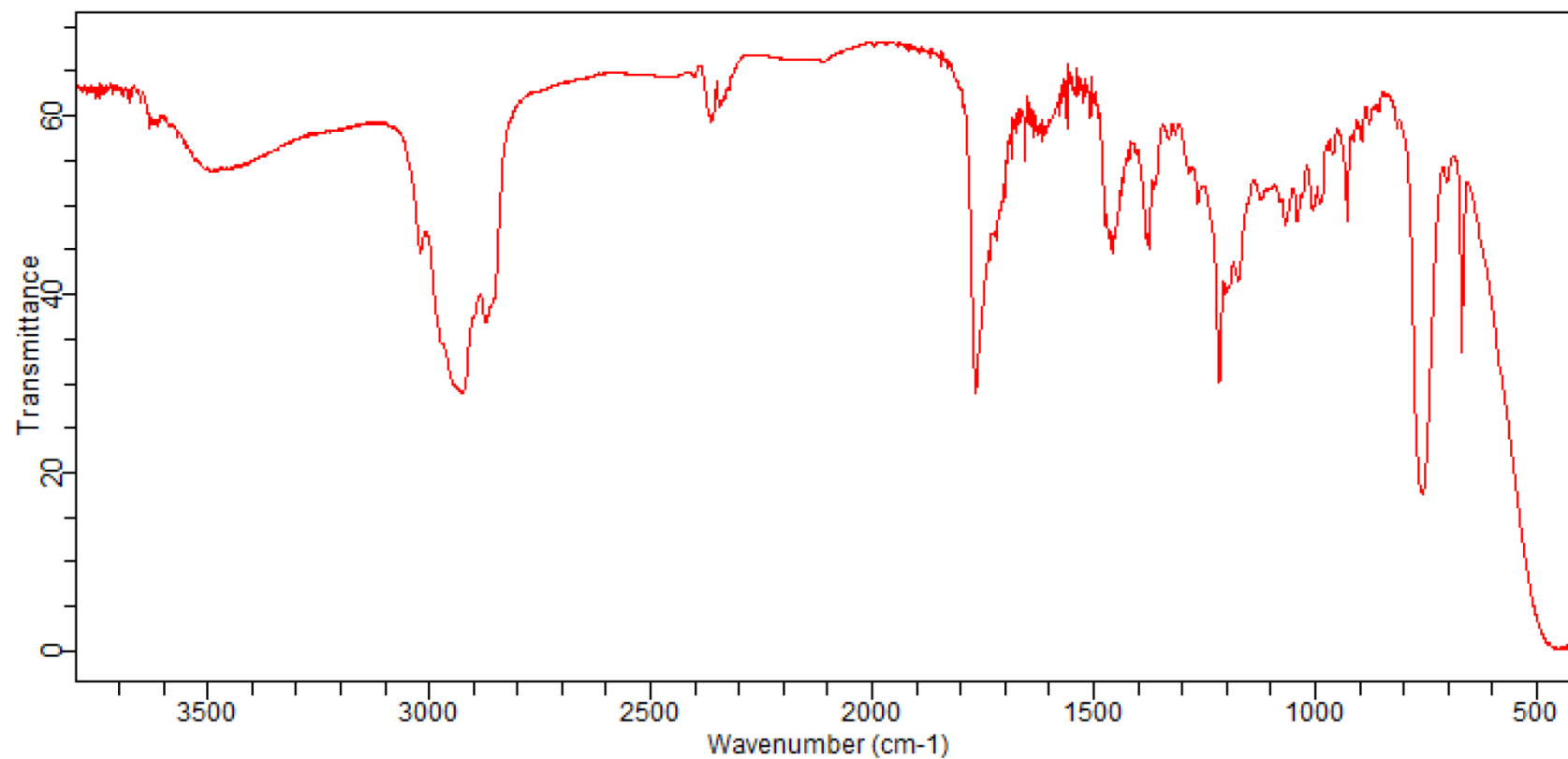


Figure S2. IR spectrum of compound **1**

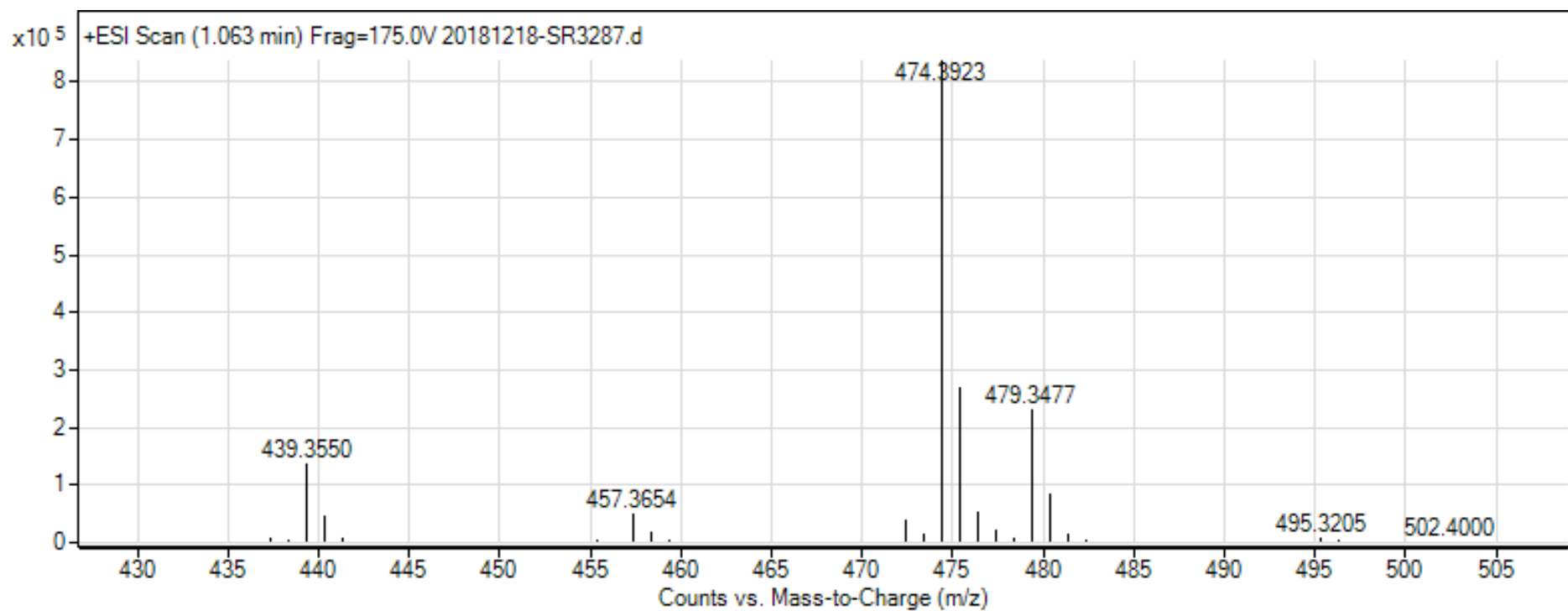


Figure S3. HR-Mass spectrum of compound **1**

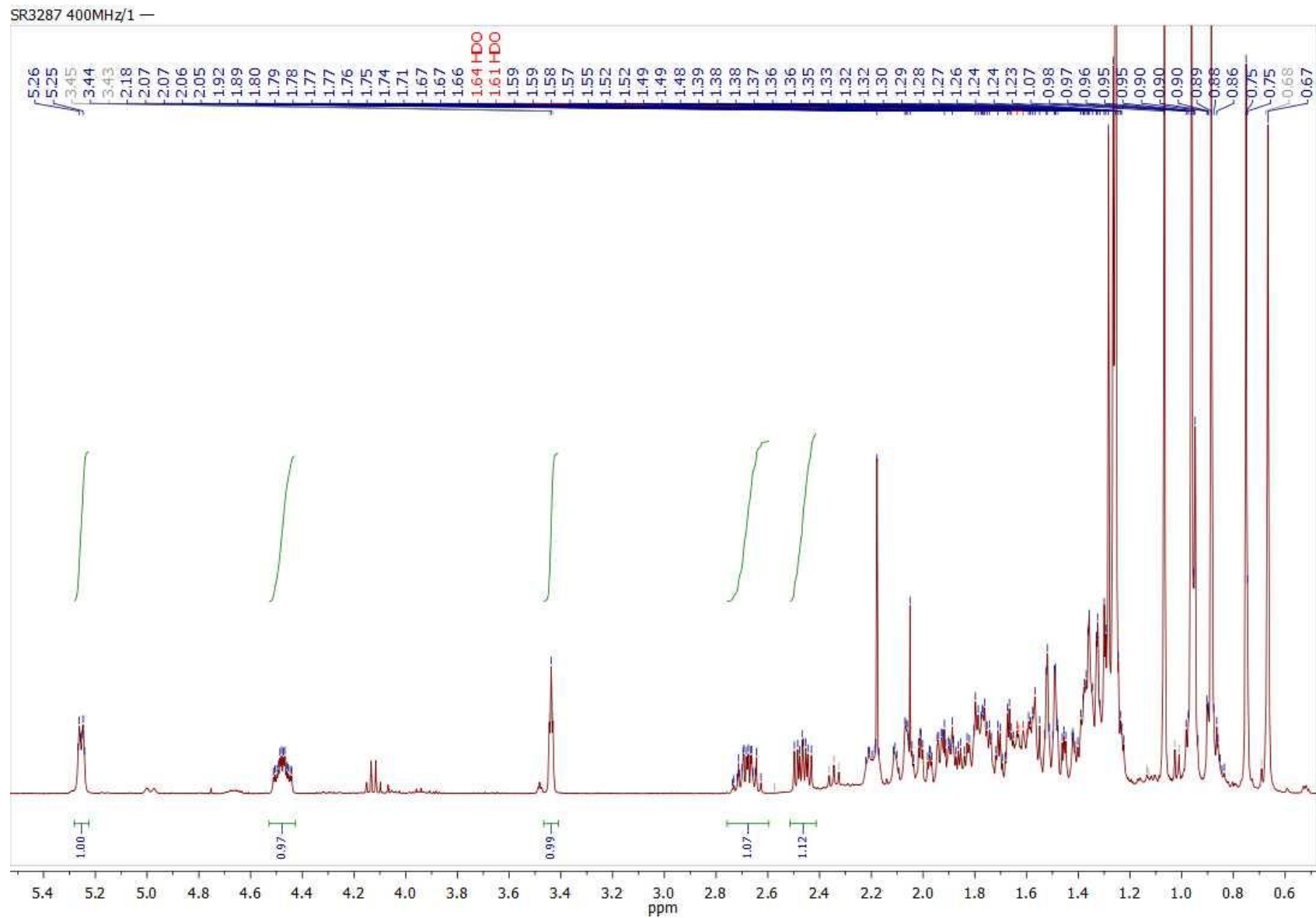


Figure S4. ^1H NMR spectrum of **1** recorded in CDCl_3 at 400 MHz

SR3287 400MHz/2 — carbonio disaccoppiato

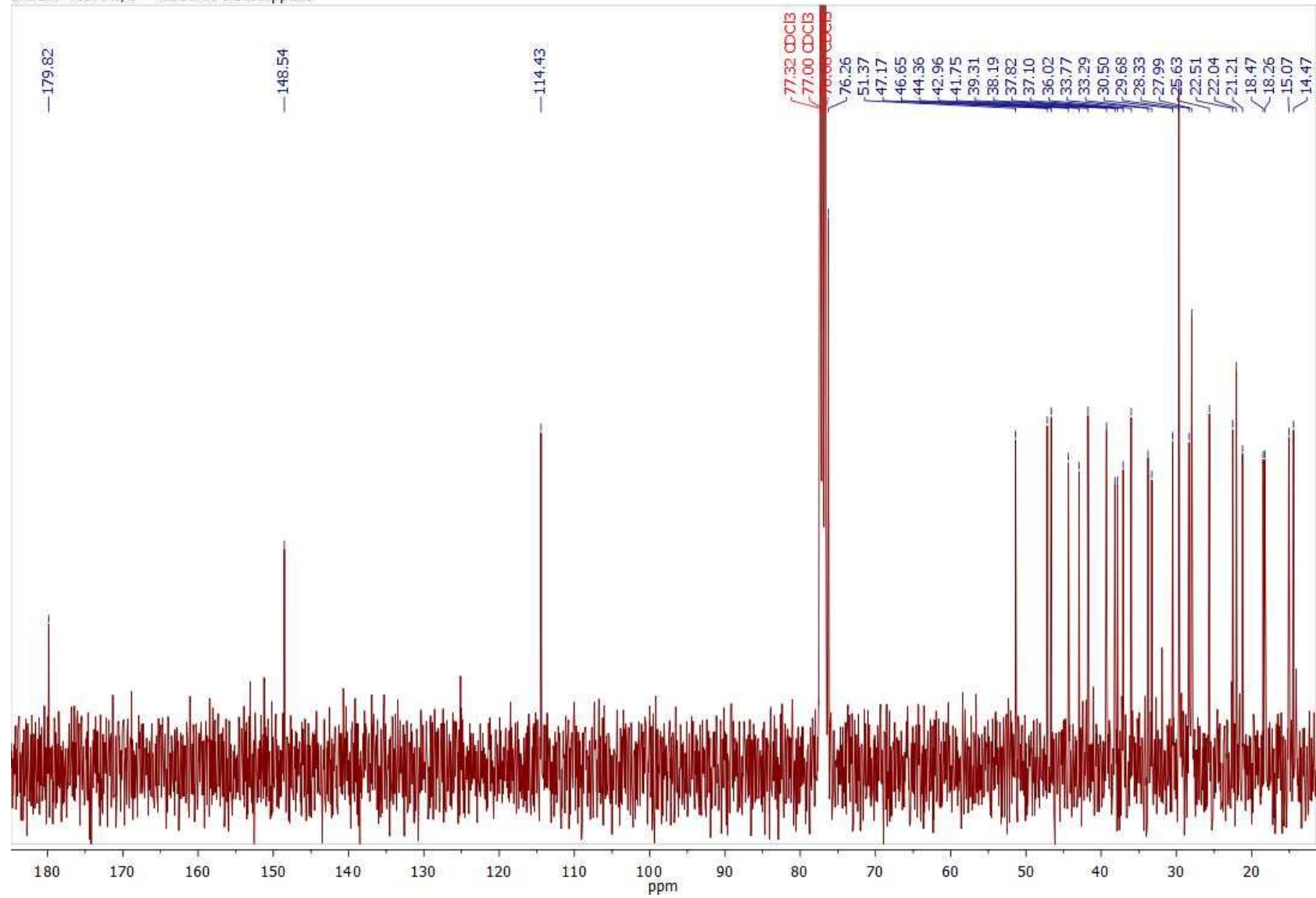


Figure S5. ^{13}C NMR spectrum of **1** recorded in CDCl_3 at 100 MHz

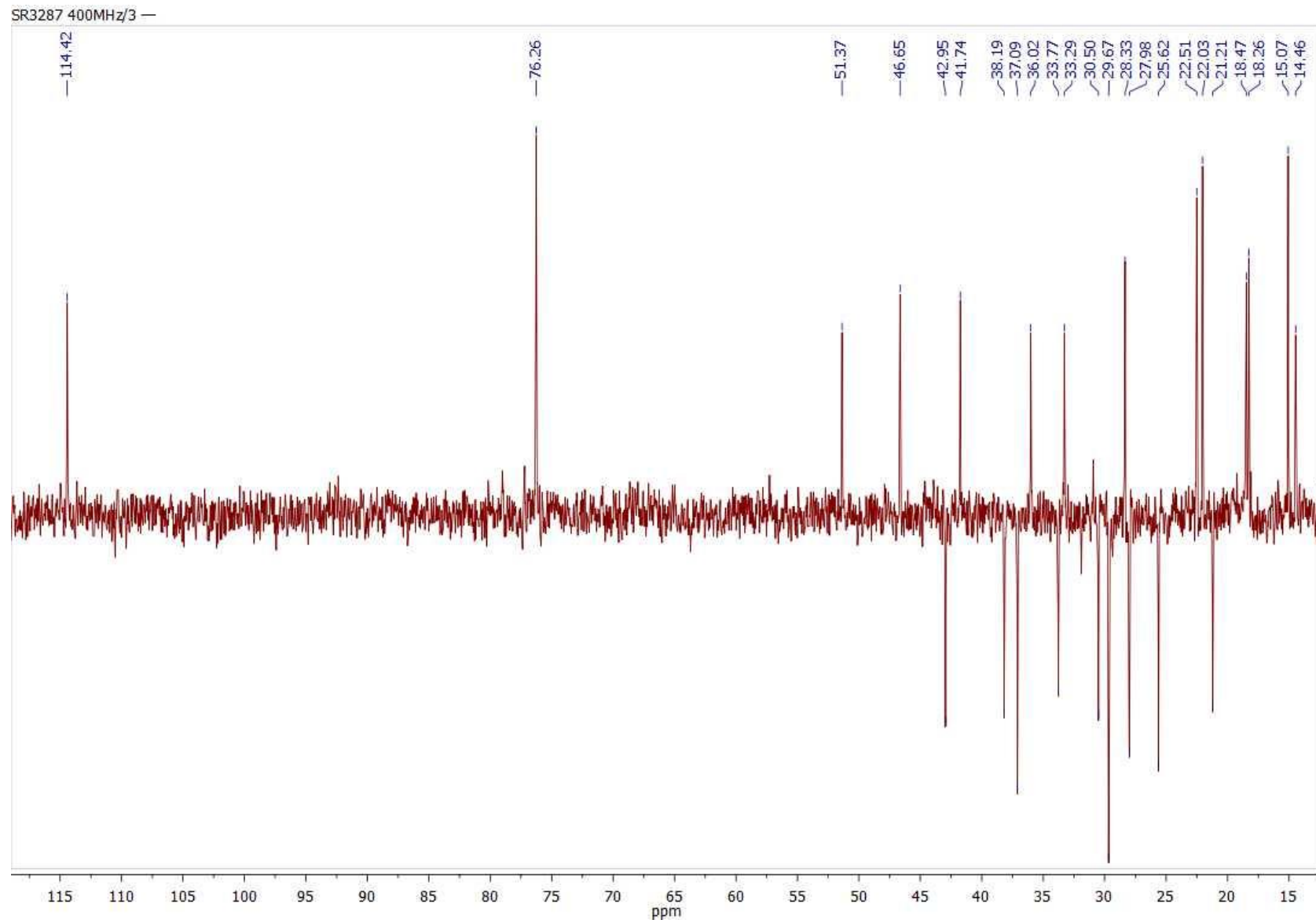


Figure S6. DEPT spectrum of **1** recorded in CDCl_3

SR3287 400MHz/4 — HSQC

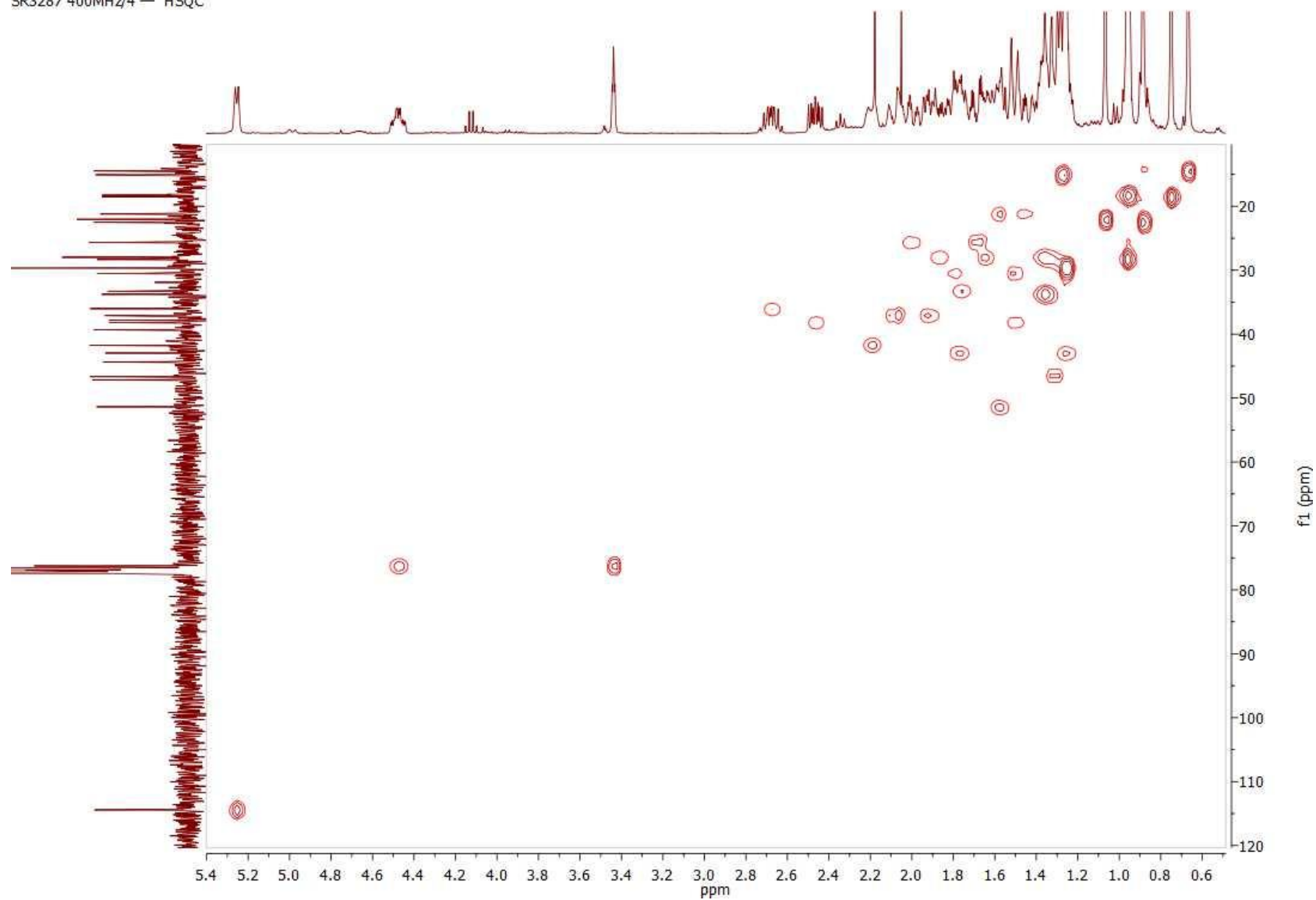


Figure S7. HSQC spectrum of **1** recorded in CDCl_3

SR3287 400MHz/5 — HMBC

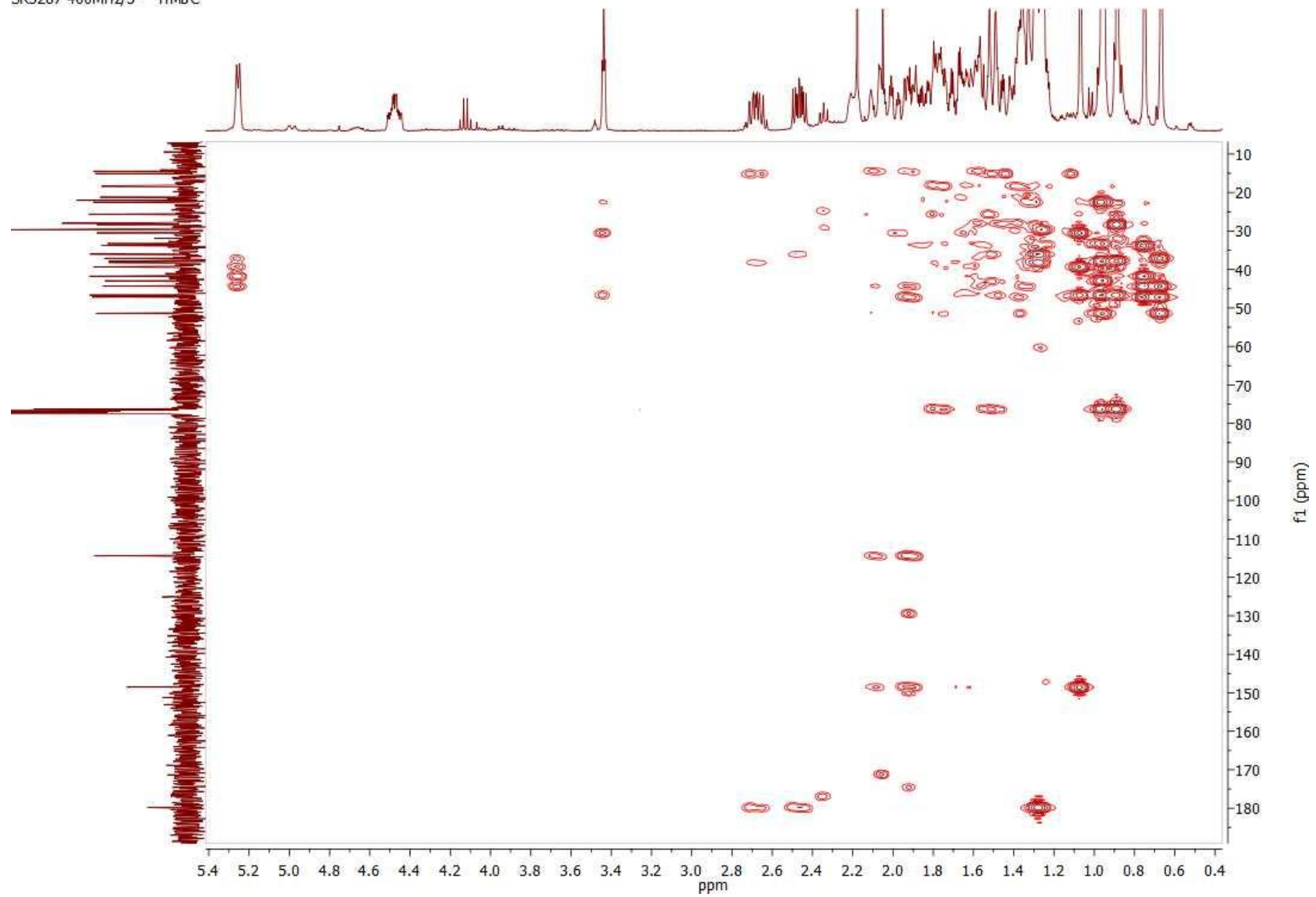


Figure S8. HMBC spectrum of **1** recorded in CDCl_3

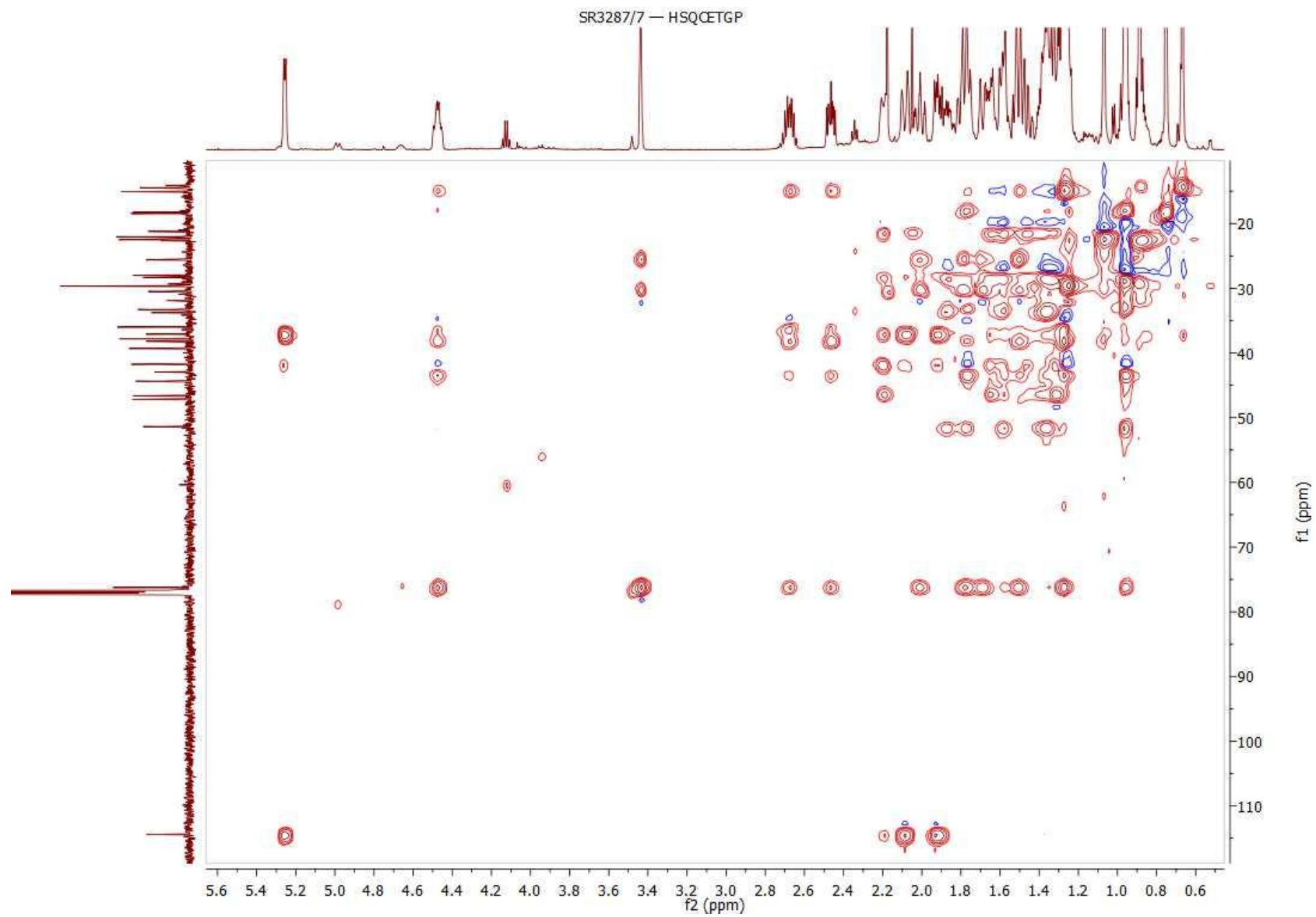


Figure S9. HSQC-TOCSY spectrum of **1** recorded in CDCl₃

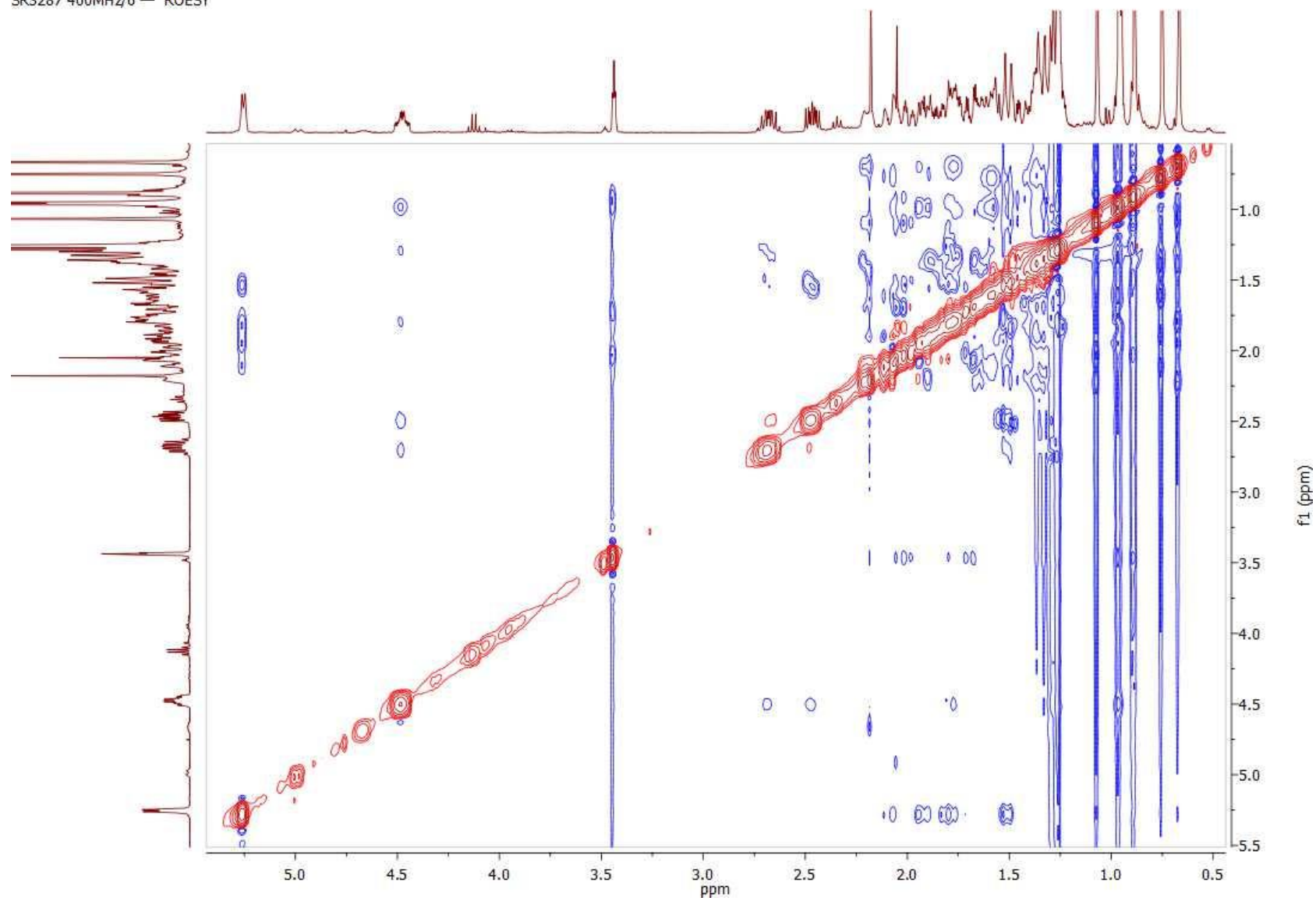


Figure S10. ROESY spectrum of **1** recorded in CDCl_3