

Population	#Events	%Total
■ All Events	10,000	100.0
☒ Propidium iodide	69	0.7
☒ Alexa Fluor 488	1,129	11.3
☒ Q1	0	0.0
☒ Necrotic cells	66	0.7
☒ Viable cells	8,792	87.9
☒ Apoptotic cells	1,142	11.4

Fig1. Apoptotic and necrotic cells via flow cytometer after 48 h incubation with Naked ASH2L siRNA (2,85 µg)

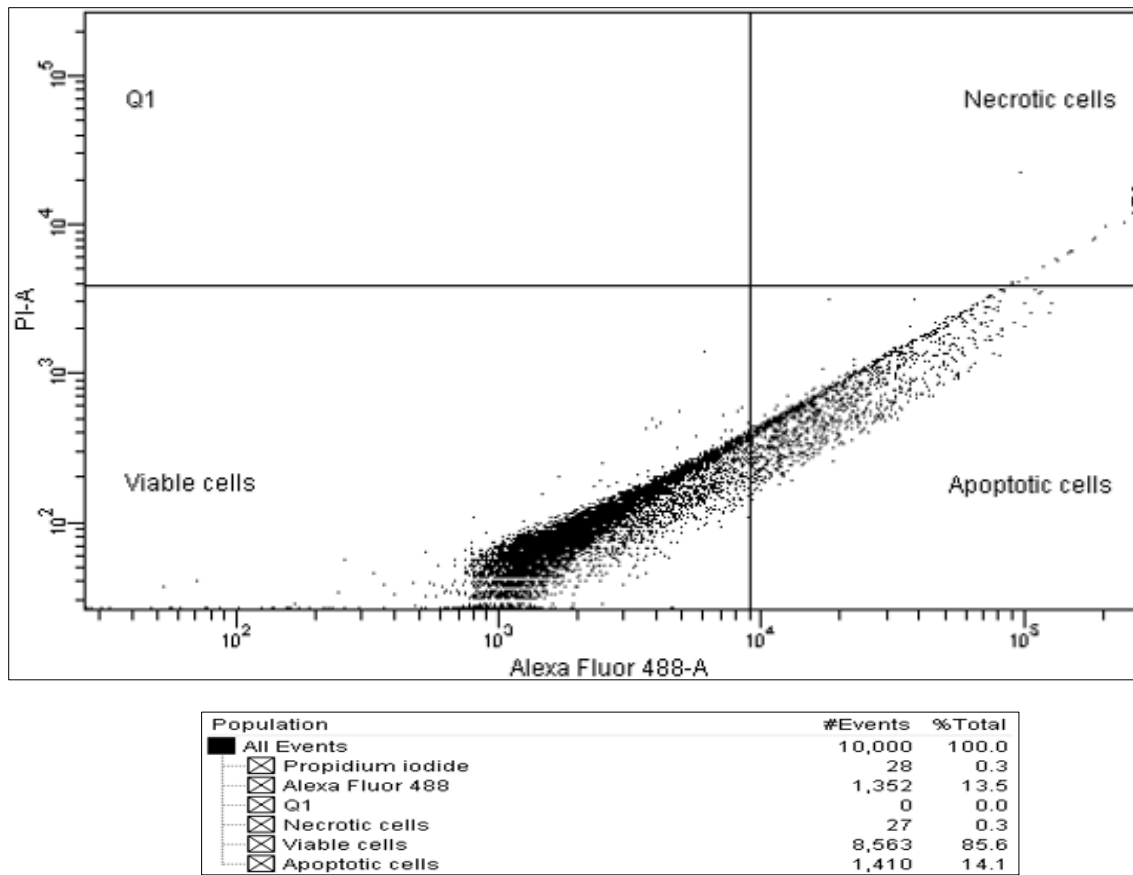
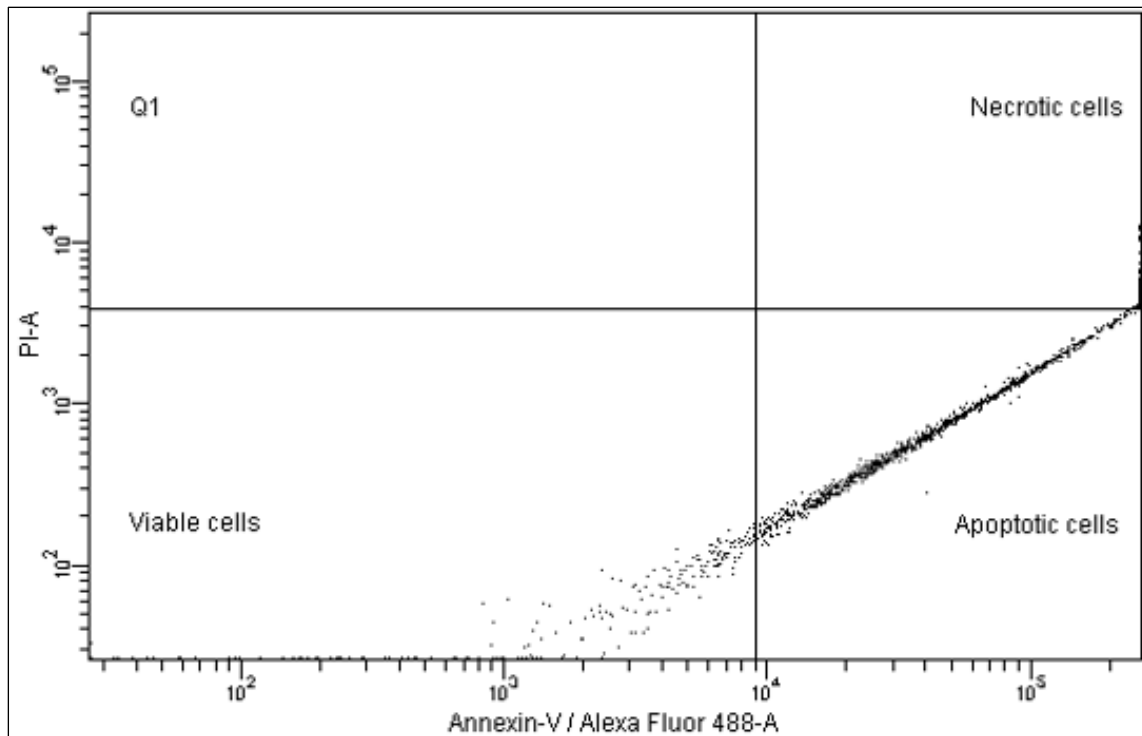
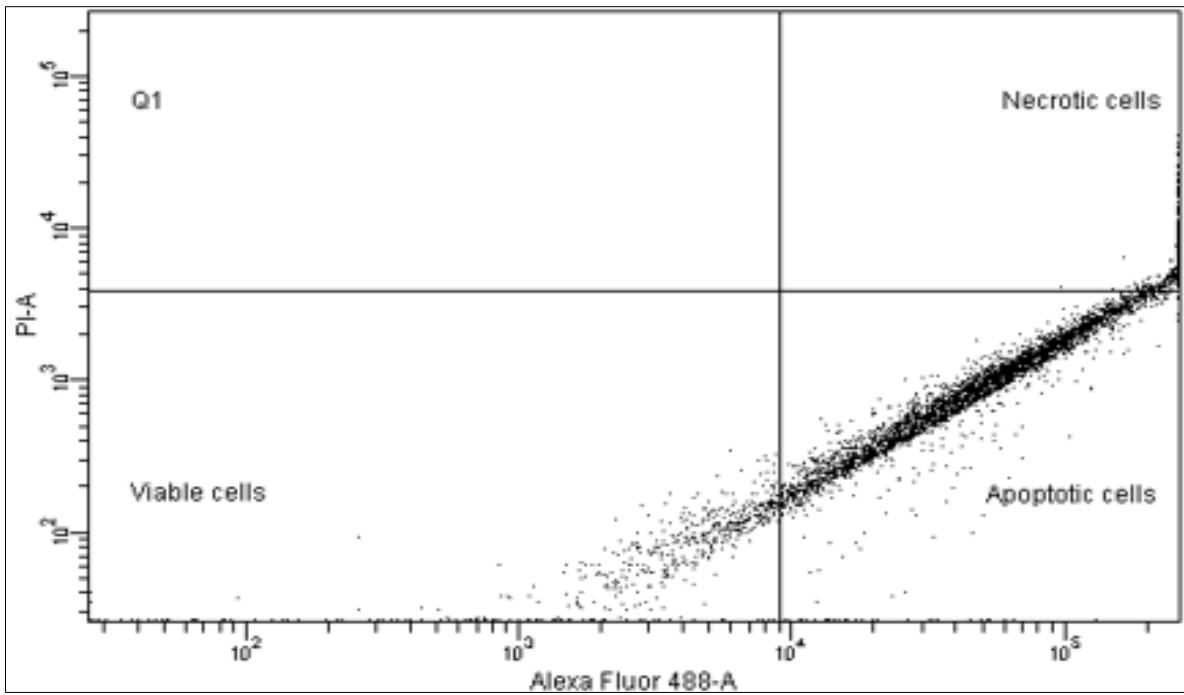


Fig2. Apoptotic and necrotic cells via flow cytometer after 48 h incubation with Naked ASH2L siRNA (5,7 µg)



Population	#Events	%Total
■ All Events	1,419	100.0
☒ Propidium iodide	60	4.2
☒ Alexa Fluor 488	1,102	77.7
☒ Q1	0	0.0
☒ Necrotic cells	60	4.2
☒ Viable cells	249	17.5
☒ Apoptotic cells	1,110	78.2

Fig3. Apoptotic and necrotic cells via flow cytometer after 48 h incubation with ASH2L siRNA-NPs (2,85 µg)



Population	#Events	%Total
■ All Events	5,039	100.0
☒ Propidium iodide	413	8.2
☒ Alexa Fluor 488	3,955	78.5
☒ Q1	0	0.0
☒ Necrotic cells	403	8.0
☒ Viable cells	746	14.8
☒ Apoptotic cells	3,890	77.2

Fig4. Apoptotic and necrotic cells via flow cytometer after 48 h incubation with ASH2L siRNA NPs (5,7 µg)

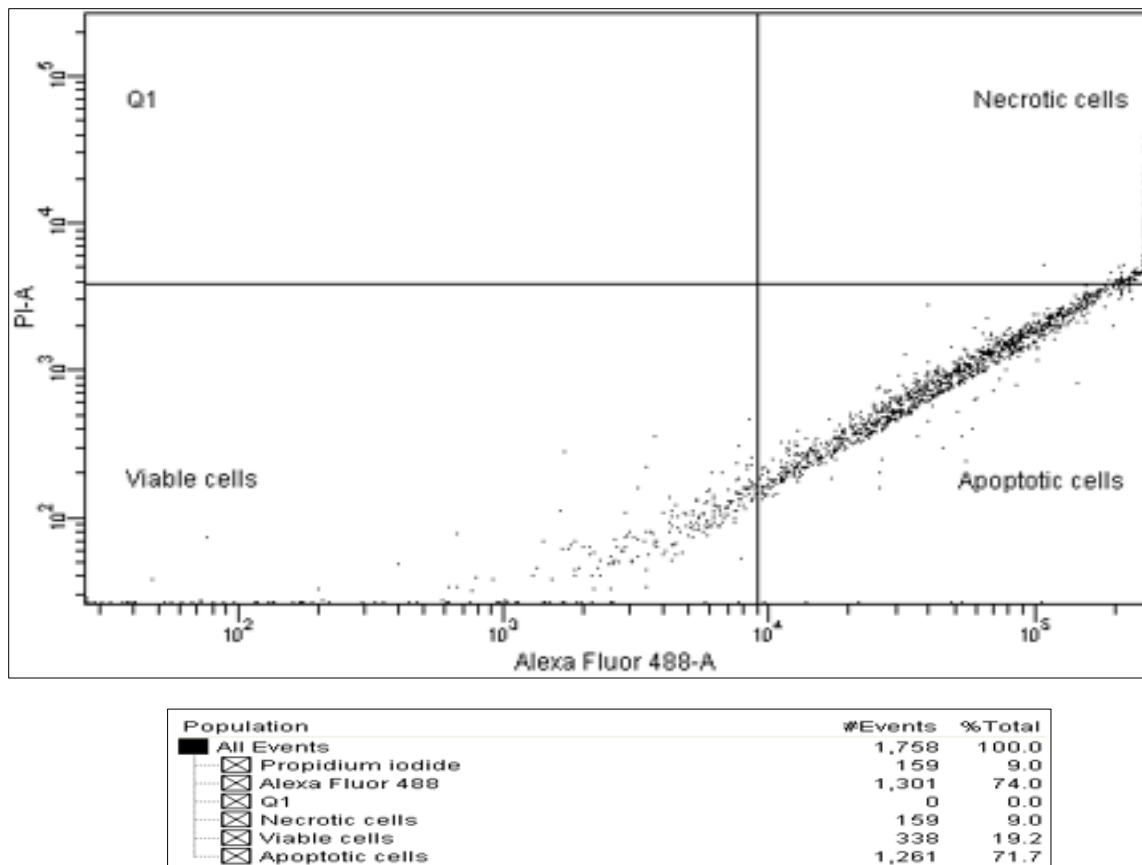
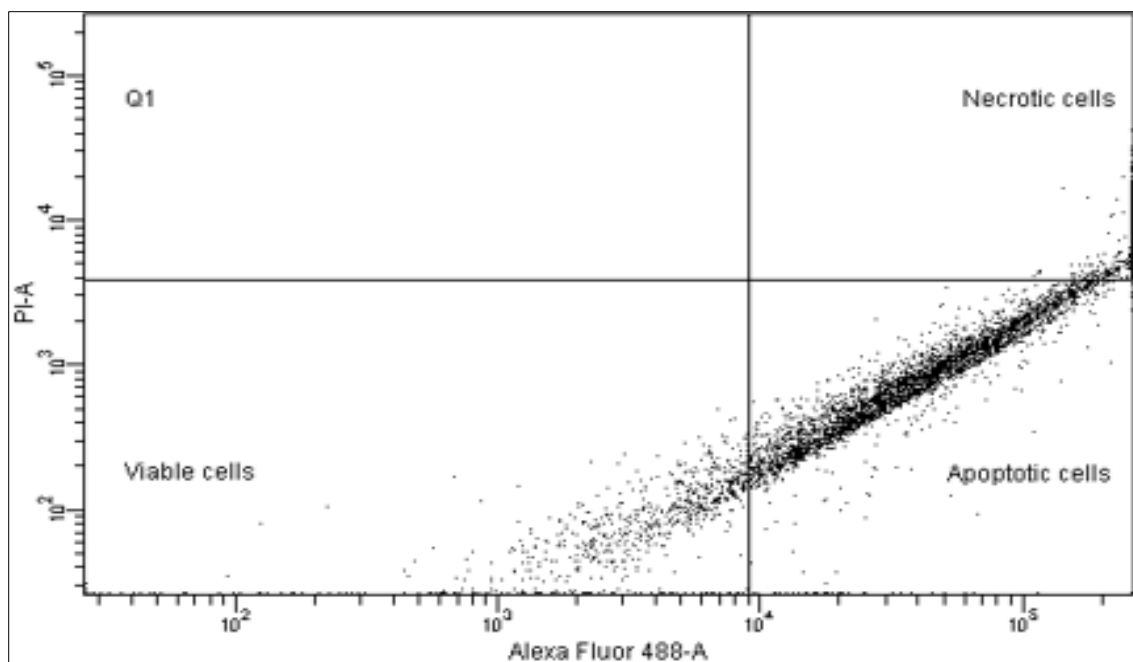
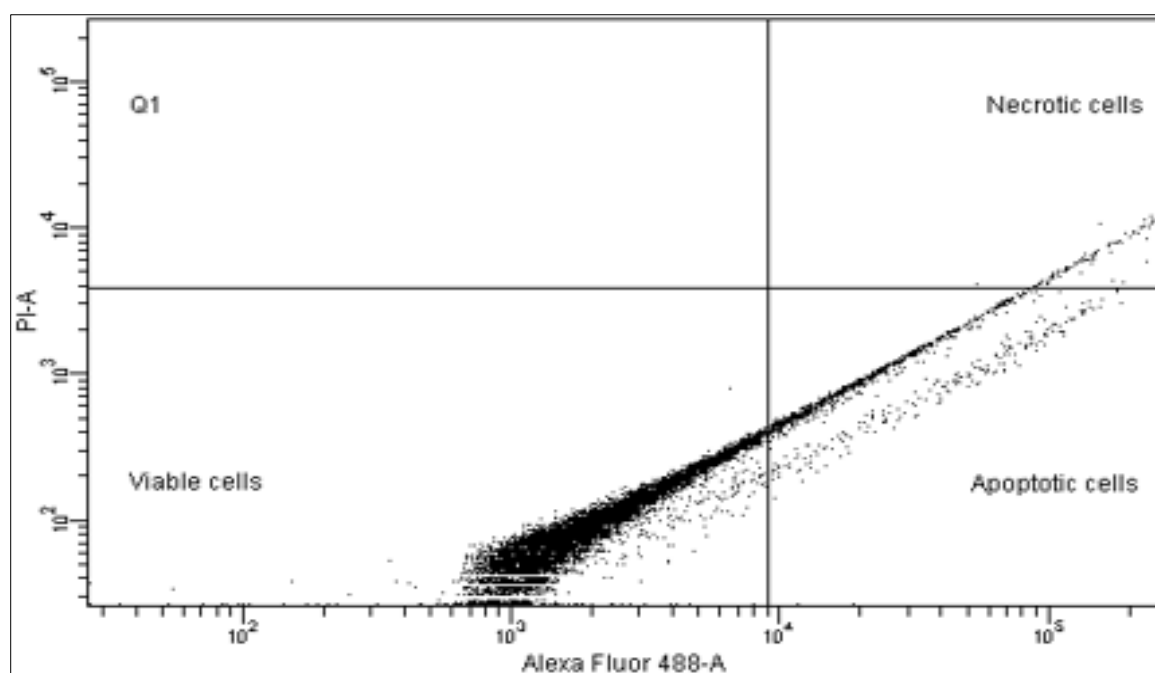


Fig5. Apoptotic and necrotic cells via flow cytometer after 48 h incubation with HiPerFect ASH2L siRNA (2,85 µg)



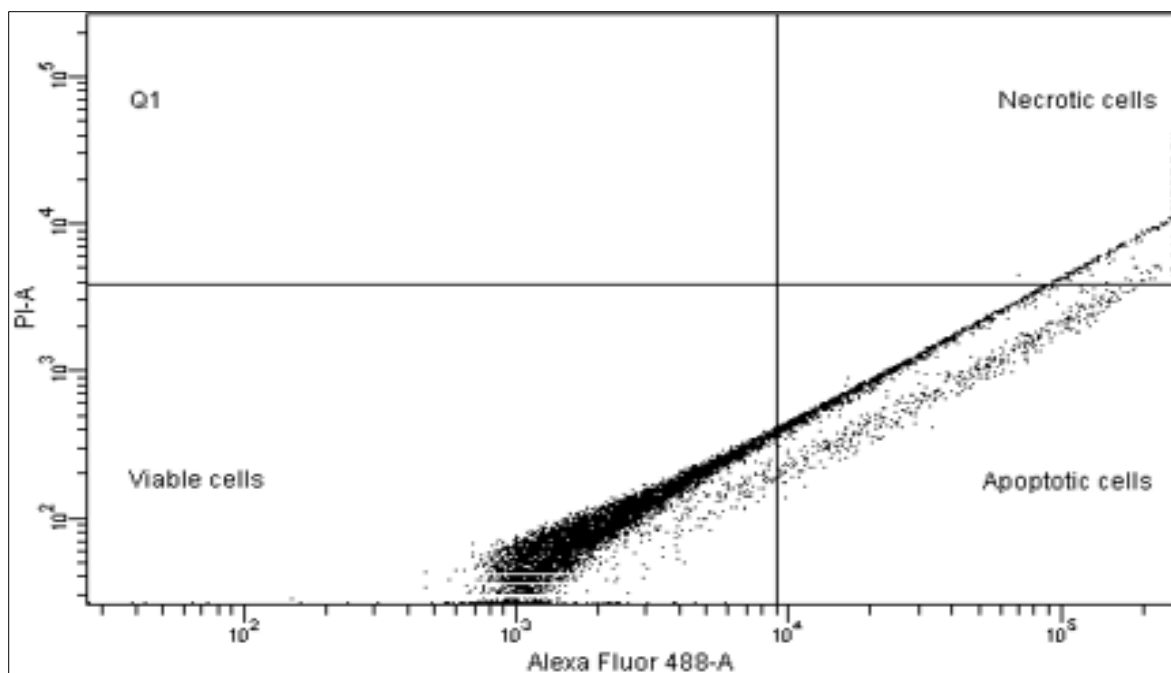
Population	#Events	%Total
■ All Events	5,021	100.0
▣ Propidium iodide	338	6.7
▣ Alexa Fluor 488	3,904	77.8
▣ Q1	0	0.0
▣ Necrotic cells	332	6.6
▣ Viable cells	856	17.0
▣ Apoptotic cells	3,833	76.3

Fig6. Apoptotic and necrotic cells via flow cytometer after 48 h incubation with HiPerFect ASH2L siRNA (5,7 µg)



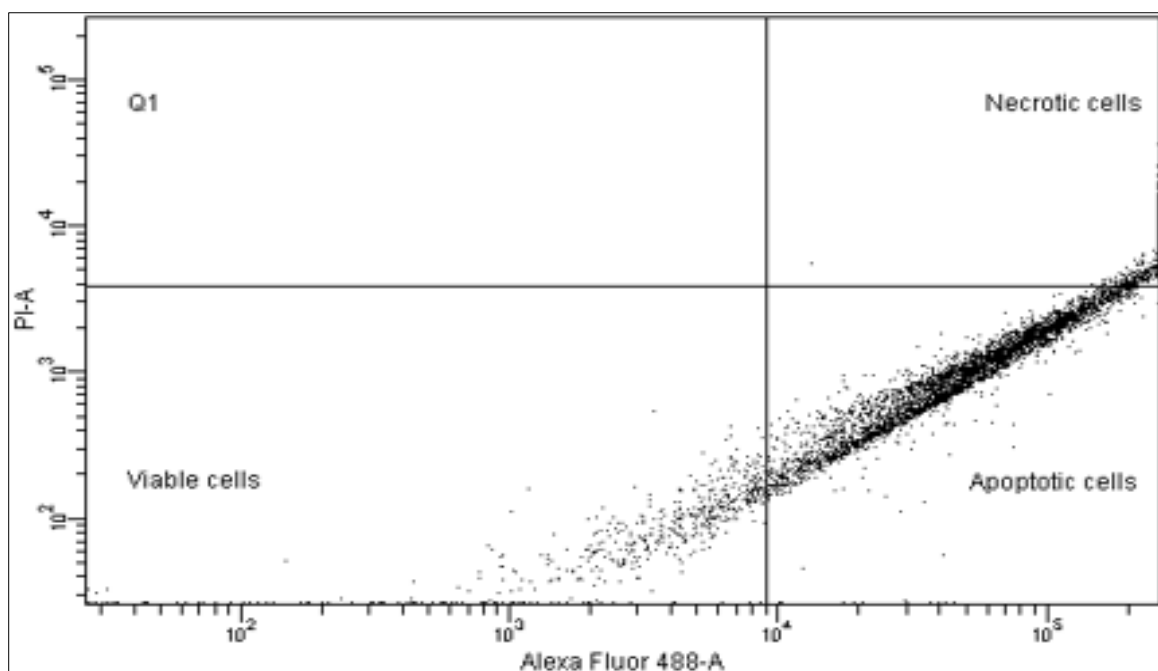
Population	#Events	%Total
All Events	10,000	100.0
Propidium iodide	142	1.4
Alexa Fluor 488	1,190	11.9
Q1	0	0.0
Necrotic cells	141	1.4
Viable cells	8,710	87.1
Apoptotic cells	1,149	11.5

Fig7. Apoptotic and necrotic cells via flow cytometer after 48 h incubation with Naked CK2 siRNA (2,85 µg)



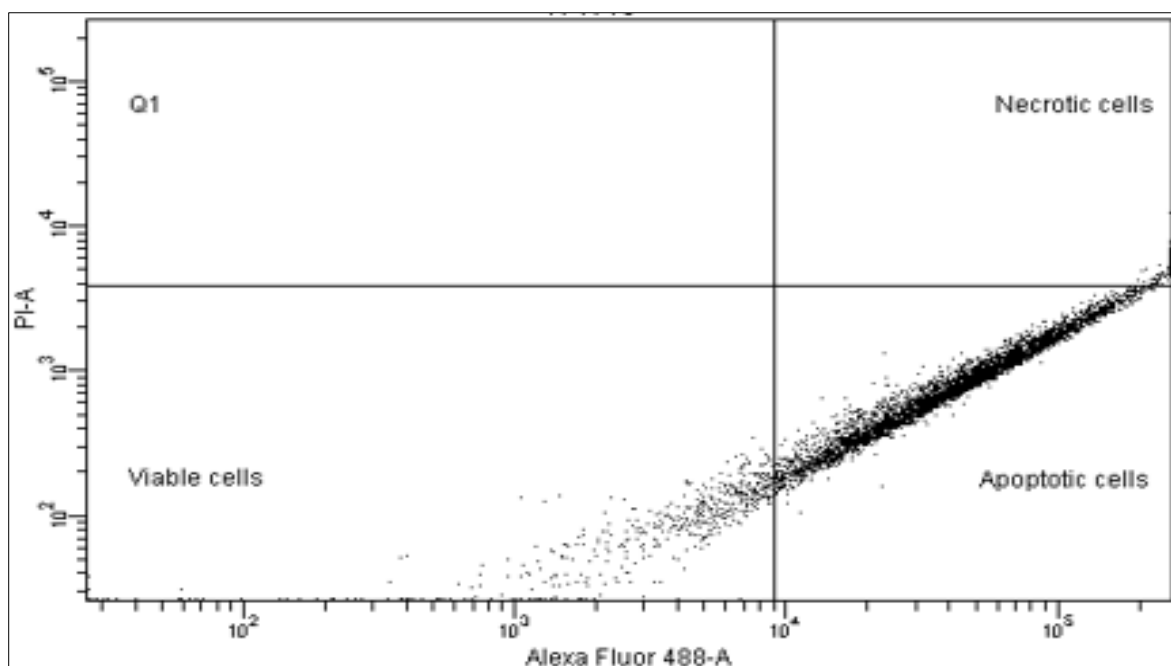
Population	#Events	%Total
■ All Events	10,000	100.0
☒ Propidium iodide	230	2.3
☒ Alexa Fluor 488	1,867	18.7
☒ Q1	0	0.0
☒ Necrotic cells	222	2.2
☒ Viable cells	8,004	80.0
☒ Apoptotic cells	1,774	17.7

Fig8. Apoptotic and necrotic cells via flow cytometer after 48 h incubation with Naked CK2 siRNA (5,7 µg)



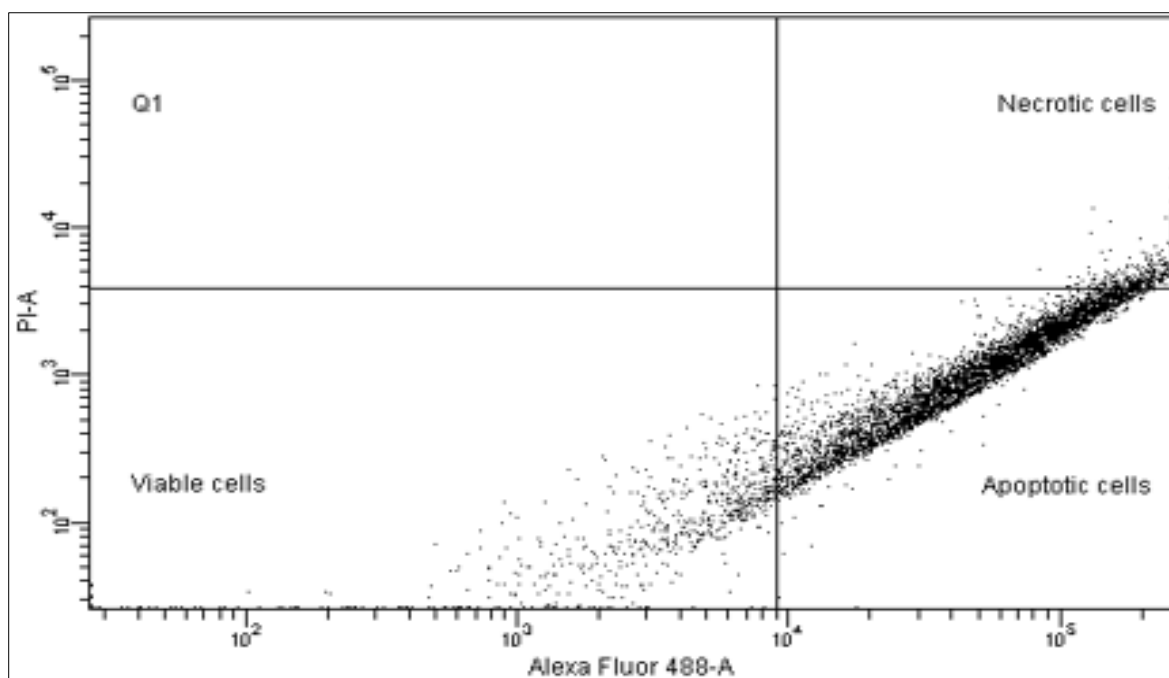
Population	#Events	%Total
■ All Events	5,064	100.0
▣ Propidium iodide	553	10.9
▣ Alexa Fluor 488	4,039	79.8
▣ Q1	0	0.0
▣ Necrotic cells	545	10.8
▣ Viable cells	624	12.3
▣ Apoptotic cells	3,895	76.9

Fig9. Apoptotic and necrotic cells via flow cytometer after 48 h incubation with CK2 siRNA NPs (2,85 µg)



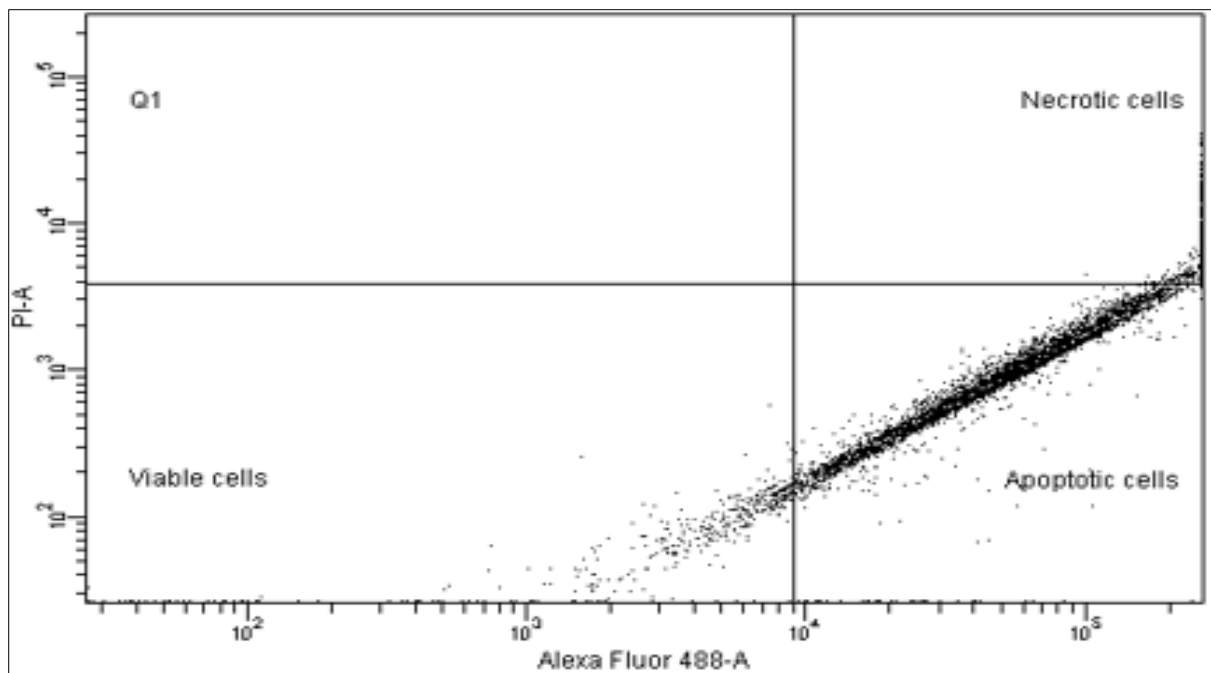
Population	#Events	%Total
All Events	5,038	100.0
Propidium iodide	83	1.6
Alexa Fluor 488	4,404	87.4
Q1	0	0.0
Necrotic cells	77	1.5
Viable cells	562	11.2
Apoptotic cells	4,399	87.3

Fig10. Apoptotic and necrotic cells via flow cytometer after 48 h incubation with CK2 siRNA NPs (5,7 μg)



Population	#Events	%Total
■ All Events	6,101	100.0
▣ Propidium iodide	483	7.9
▣ Alexa Fluor 488	5,092	83.5
▣ Q1	0	0.0
▣ Necrotic cells	472	7.7
▣ Viable cells	801	13.1
▣ Apoptotic cells	4,828	79.1

Fig11. Apoptotic and necrotic cells via flow cytometer after 48 h incubation with HiPerFect CK2 siRNA (2,85 µg)



Population	#Events	%Total
■ All Events	5,015	100.0
▣ Propidium iodide	387	7.7
▣ Alexa Fluor 488	4,188	83.5
▣ Q1	0	0.0
▣ Necrotic cells	379	7.6
▣ Viable cells	517	10.3
▣ Apoptotic cells	4,119	82.1

Fig12. Apoptotic and necrotic cells via flow cytometer after 48 h incubation with HiPerFect CK2 siRNA (5,7 µg)