

Supplemental information

Characterization of osthénol metabolism in vivo and its pharmacokinetics

Pil Joung Cho^a, Su Min Choi^a, Younah Kim^a, Doo Hyun Lee^a, Ye Eun Noh^a, Sujeong Kim^a, Ju Hyun Kim^b, Taeho Lee^{a#} and Sangkyu Lee^{a,*}

^aBK21 Plus KNU Multi-Omics-based Creative Drug Research Team, College of Pharmacy, Research Institute of Pharmaceutical Sciences, Kyungpook National University, Daegu 41566, Republic of Korea

^b College of Pharmacy, Yeungnam University, Gyeongsan 38541, Republic of Korea

Running title: Determination of osthénol and its conjugates in mouse plasma

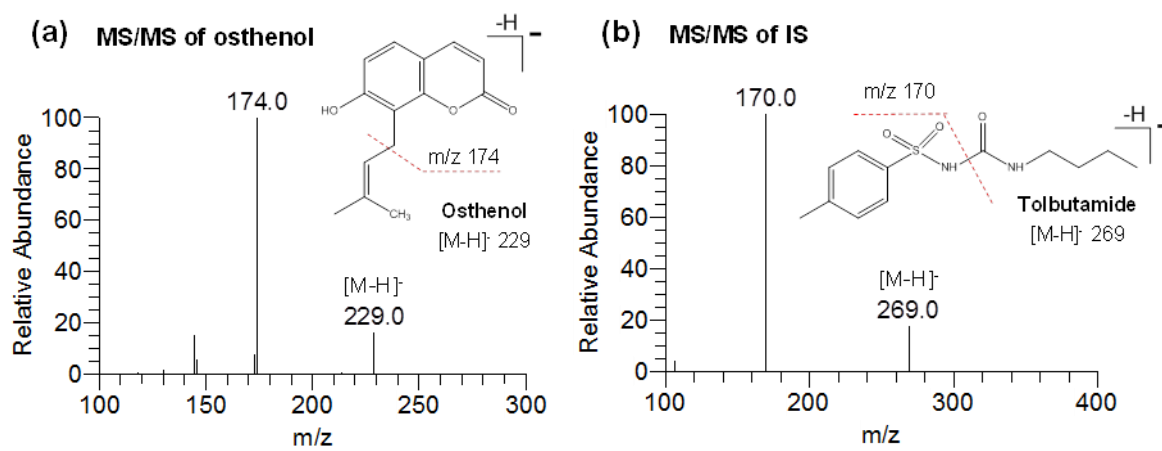
*Correspondence: Sangkyu Lee, Ph.D., Associate Professor, College of Pharmacy, Research Institute of Pharmaceutical Sciences, Kyungpook National University, 80 Daehak-ro, Buk-gu 41566, Republic of Korea. Tel.: +82-53-950-8571; Fax: +82-53-950-8557; E-mail: sangkyu@knu.ac.kr

#**Co-Correspondence:** Taeho Lee, Ph.D., Associate Professor, College of Pharmacy, Research Institute of Pharmaceutical Sciences, Kyungpook National University, 80 Daehak-ro, Buk-gu 41566, Republic of Korea. Tel.: +82-53-950-8573; Fax: +82-53-950-8557; E-mail: tlee@knu.ac.kr

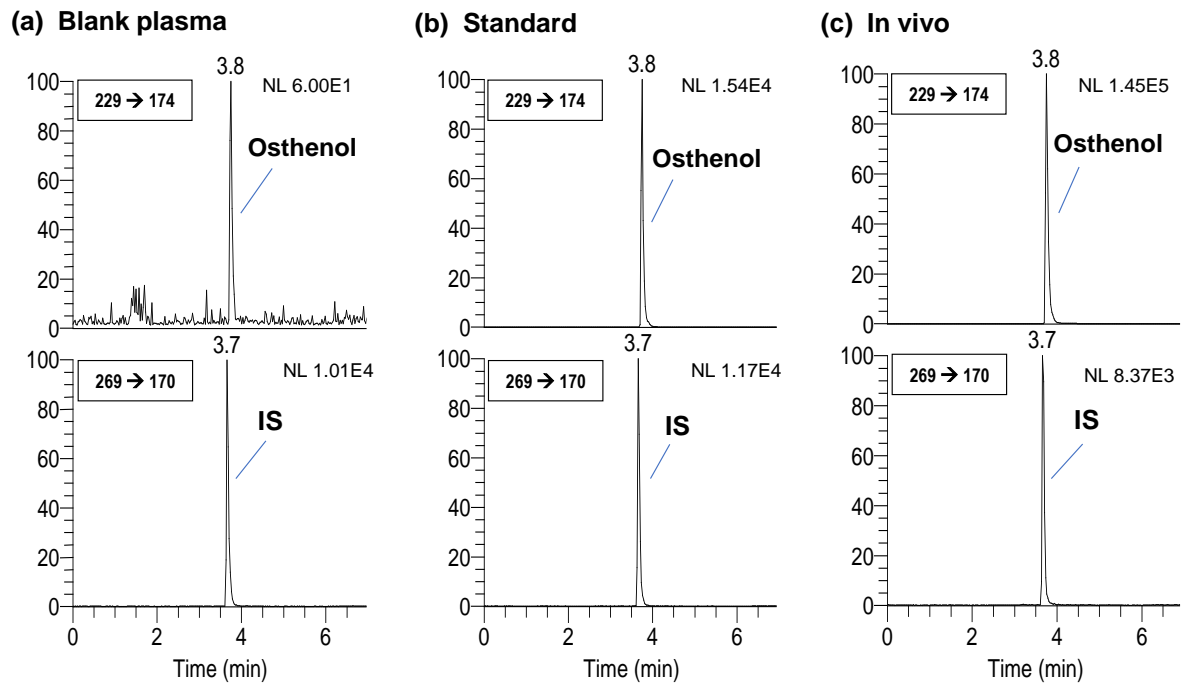
Supplemental Table 1. Summary of the inter-day as well as intra-day RSD and accuracy of osthénol measurements in male ICR mouse plasma

Theoretical concentration (µg/mL)	Intra-day			Inter-day		
	Concentration observed (µg/mL)	RSD (%)	Accuracy (%)	Concentration observed (µg/mL)	RSD (%)	Accuracy (%)
0.05	0.06 ± 0.002	8.5	86.8	0.05 ± 0.0003	1.5	93.7
0.1	0.09 ± 0.002	6.8	111.8	0.09 ± 0.0008	2.2	109.9
1	0.9 ± 0.016	4.1	110.8	0.9 ± 0.005	1.1	103.7

Values represent the means ± SDs of five determinations.

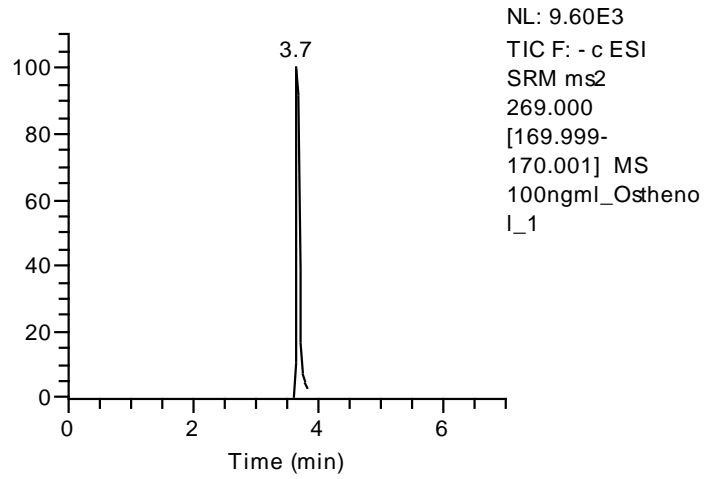


Supplemental Figure 1. Product ion mass spectra of osthenol (a) and tolbutamide (IS) (b).

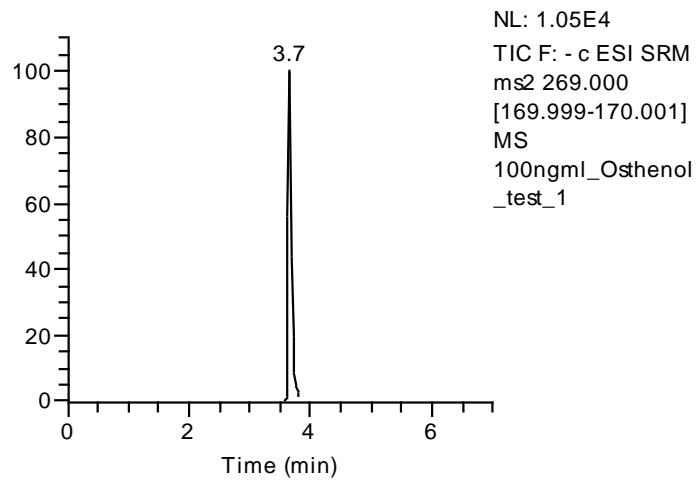


Supplemental Figure 2. Representative MRM chromatograms of osthénol and tolbutamide (IS) in blank mouse plasma (a), blank mouse plasma spiked with 1 $\mu\text{g/mL}$ of osthénol (b) and mouse plasma sample obtained 10 min following intravenous administration of 5 mg/kg.

(a) 0 day



(b) After 7 day



Supplemental Figure 3. Representative MRM chromatograms of 100 ng/ml of osthenol at 0 days (A) and after 7 day (B) in mouse plasma sample.