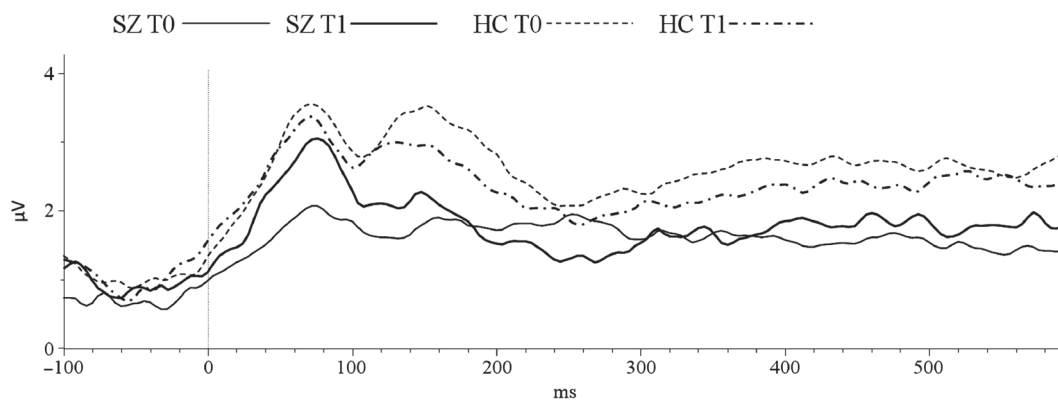


*Supplementary material for Stroth D. et al. 2015. Training of Affect Recognition impacts electrophysiological correlates of facial affect recognition in schizophrenia: Analyses of fixation-locked potentials. The World of Biol Psychiatry, 16:411–421.*



Supplementary Figure 1. Depicts the global field power of the fixation-locked potentials in schizophrenia patients (SZ) and healthy controls (HC) at baseline (T0) and retest (T1). Waveforms reveal two main components at 60 and 150 ms, respectively.