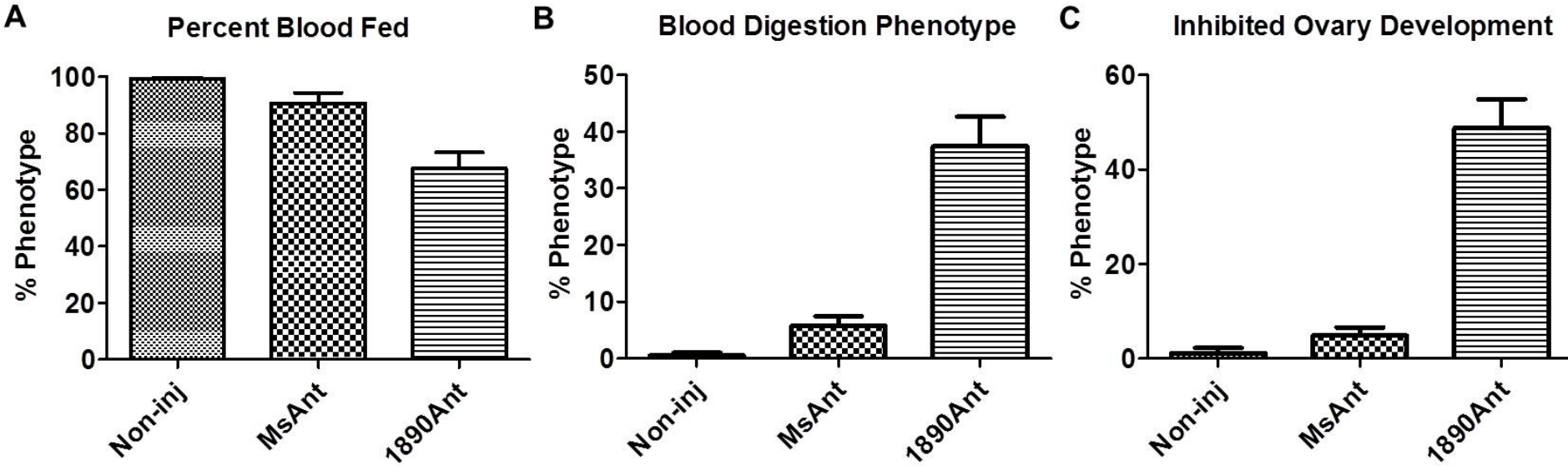
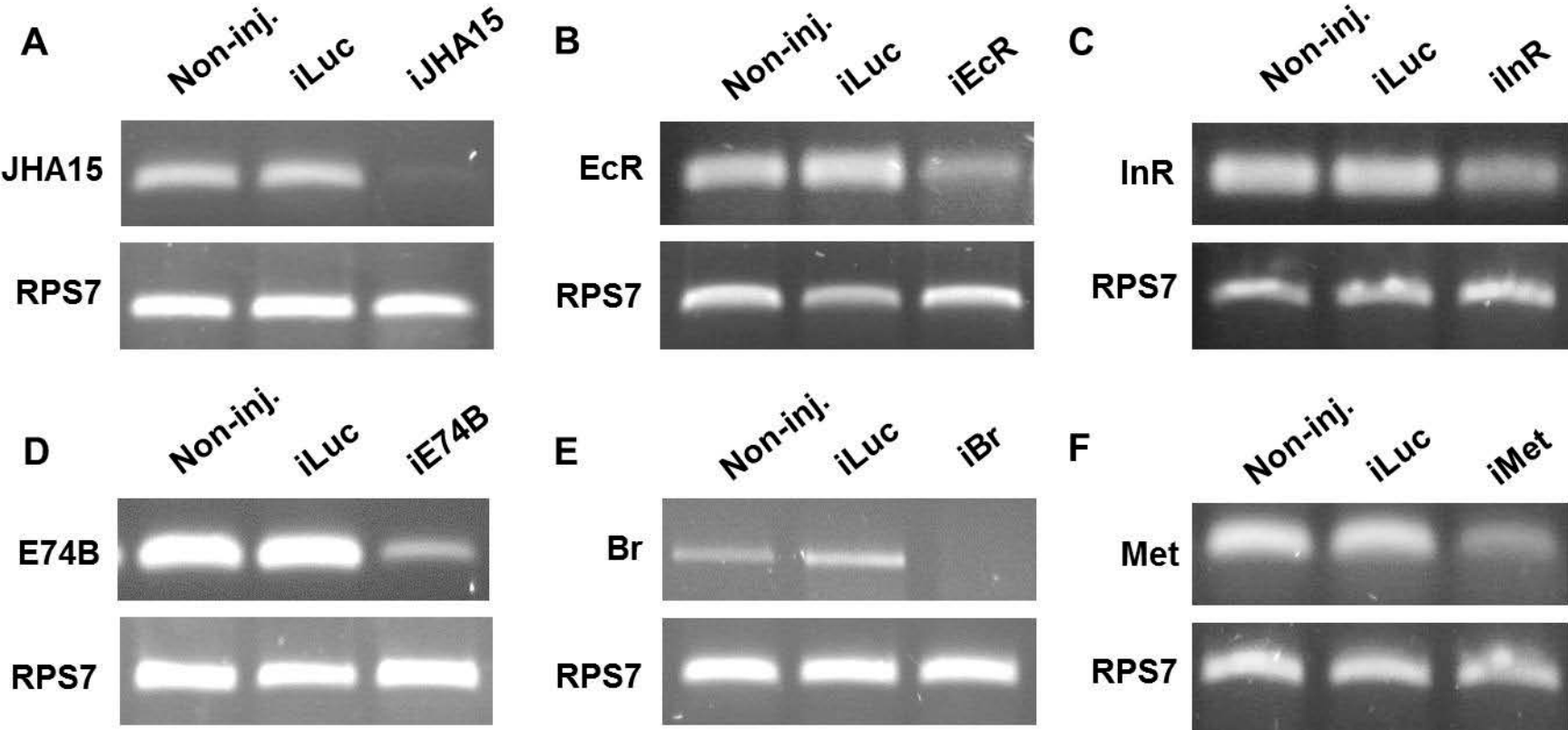


Supplemental Figure 1



miR-1890 depletion results in impaired in blood digestion and egg development. (A) Percentage of female mosquitoes injected with 1890Ant that blood fed compared to MsAnt-treated and non-injected controls. (B) Percentage of female mosquitoes injected with 1890Ant displaying the blood digestion phenotype compared to MsAnt-treated and non-injected controls. (C) Percentage of female mosquitoes injected with 1890Ant displaying the ovary development phenotype compared to MsAnt-treated and non-injected controls.

Supplemental Figure 2



Confirmation of gene knockdowns by dsRNA via semi-quantitative RT-PCR. (A) JHA15 (B) Ecdysone Receptor (EcR) (C) Insulin Receptor (InR) (D) E74B (E) Broad (Br) (A-E) Knockdown confirmation in female mosquitoes 24 h post blood meal. (F) Knockdown of Methoprene Tolerant (Met) in non-blood fed female mosquitoes. (A-F) RNAi for Luciferase (iLuc) served as a control. S7 Ribosomal Protein (RPS7) was used as a loading control.