

To appear in the *Journal of Applied Statistics*
Vol. 00, No. 00, Month 20XX, 1–1

Supplemental online material for “Joint analysis of longitudinal data and competing terminal events in the presence of dependent observational times: application to chronic kidney disease”

(Received 00 Month 20XX; accepted 00 Month 20XX)

This material continues and extends the Mathematical Appendix.

1. The GFR measurements trajectories of all patients with or without diabetes

Figure 1 shows the patterns of eGFR measurements trajectories of all patients in more detail. Comparing left and right panels, it does not have significant difference but the patients with diabetes have shorter follow-up times than those without diabetes.

2. Assessing the adequacy of the proposed model for death

Figure 2 graphically evaluates appropriateness of the fitted model for death. It shows the Kaplan-Meier survival curve of $\{(r_{2i}, \Delta_i I(\delta_i = 2)), i = 1, \dots, n\}$ by a solid curve and the assumed survival function of an extreme value random variable by a dashed one.

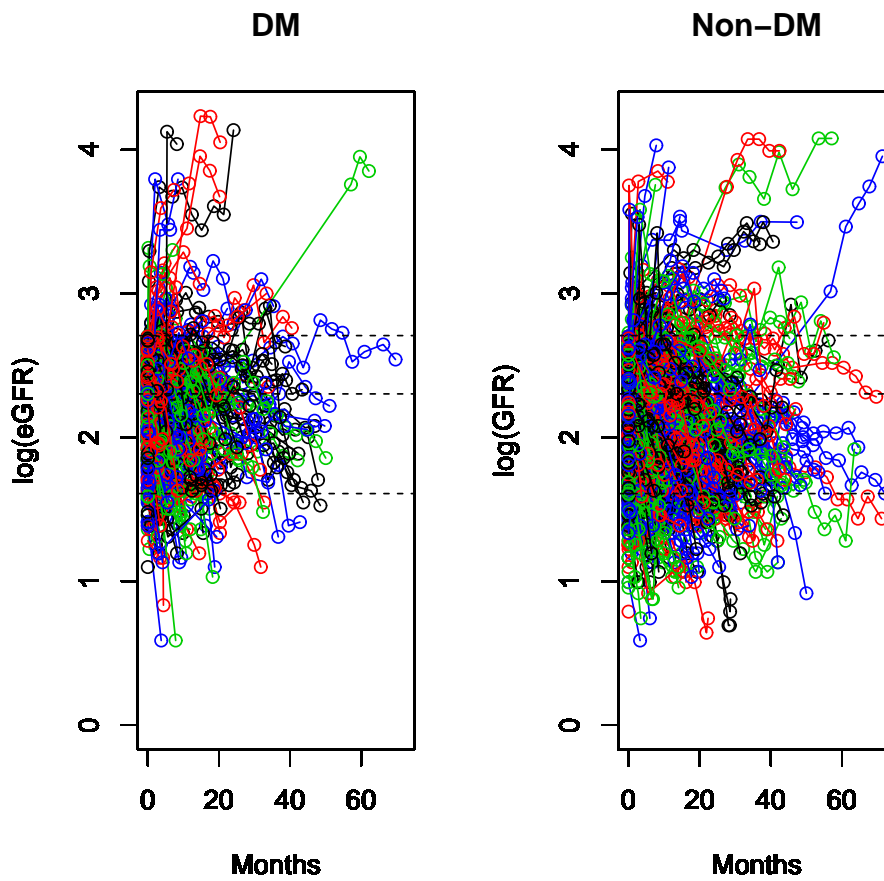


Figure 1. The eGFR measurements trajectories of all patients with or without diabetes. The left and right panels correspond to the diabetic and non-diabetic patients, respectively. Three horizontal dashed lines locate at $\log(15)$, $\log(10)$ and $\log(5)$.

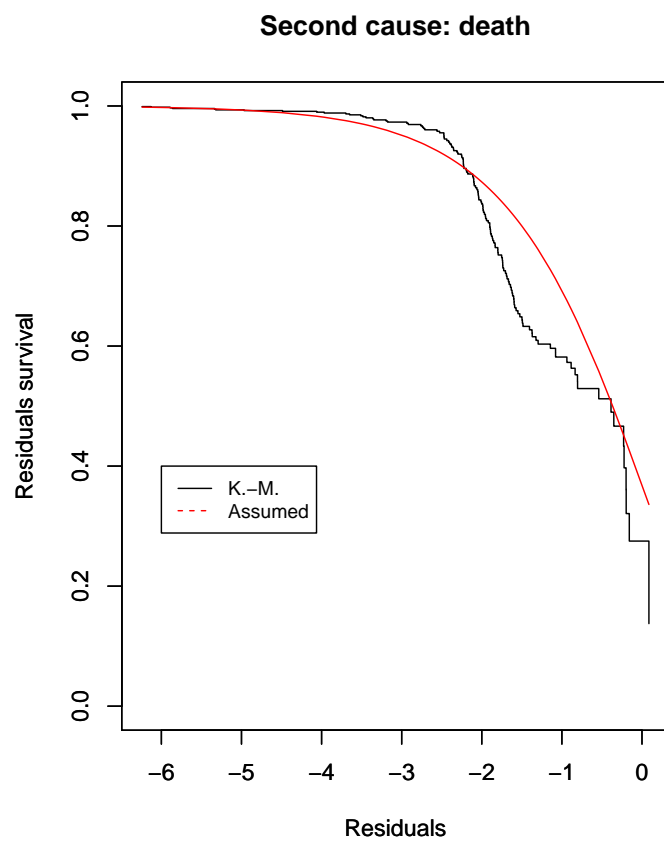


Figure 2. Assessing the goodness of fit of model (4) (i.e., model (7)) of second cause.