

Table A1. Growth of the PRD (1979-2010)

Year	Permanent population (million)	Employed persons (million)	Industrial output value (RMB billion)	GDP (RMB billion)	GDP per capita (RMB yuan)	FDI actually utilized (USD billion)	Export (USD billion)
1979	18	9	14	11	621	0.04*	0.49
2010	56	34	7210	3767	67132	18	432
% to the national total (2010)	4.1	4.5	10.3	9.3	223.8	17	27.4

Notes: ‘GDP per capita’ is calculated by the authors based on ‘GDP’ and ‘Permanent population’; ‘% to the national total (2010)’ is calculated based on the regional and the national values; indices in 1979 are calculated by adding up values of individual cities.

* No data for Zhongshan and Jiangmen.

Source: GSB 1999, 2011; NBS 2011.

Table A2. Growth of employment in six producer service sectors in Guangdong (2003-2010)

Items	2003	2004	2005	2006	2007	2008	2009	2010
Employment in six sectors (10000 persons)	241	277	306	336	373	399	424	465
Share of six sectors in total service employment (%)	19.8	20.8	20.4	20.7	21.8	22.3	22.9	23.8
Share of six sectors in total employment (%)	5.5	5.9	6.1	6.4	6.9	7.2	7.5	8.1

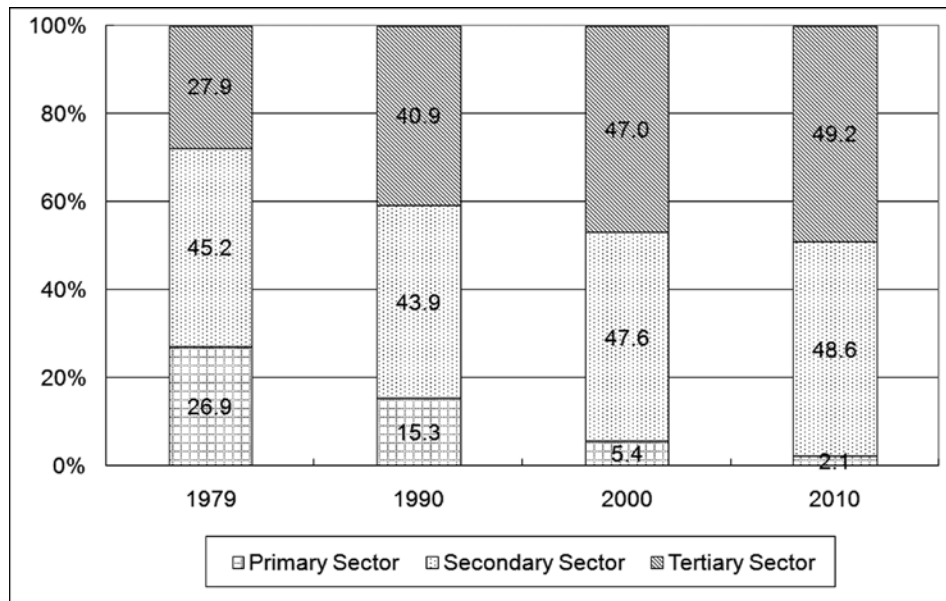
Source: GSB (2004-2011).

Table A3. FDI actually realized in six producer service sectors in Guangdong (2006-2010)

Items	2006	2007	2008	2009	2010	2006-2010
FDI actually realized in six sectors (USD billion)	2.83	5.11	5.44	5.27	5.68	24.33
Share of six sectors in total FDI in services (%)	80	82	76	70	71	75
Share of six sectors in total FDI (%)	19	30	28	27	28	27

Source: GSB (2004-2011).

Figure A1. Changes of the composition of GDP in the PRD (1979-2010)



Source: CHENG et al. 2004; GSB 2011.

Figure A2. Top five connected national cities of different cities in the PRD

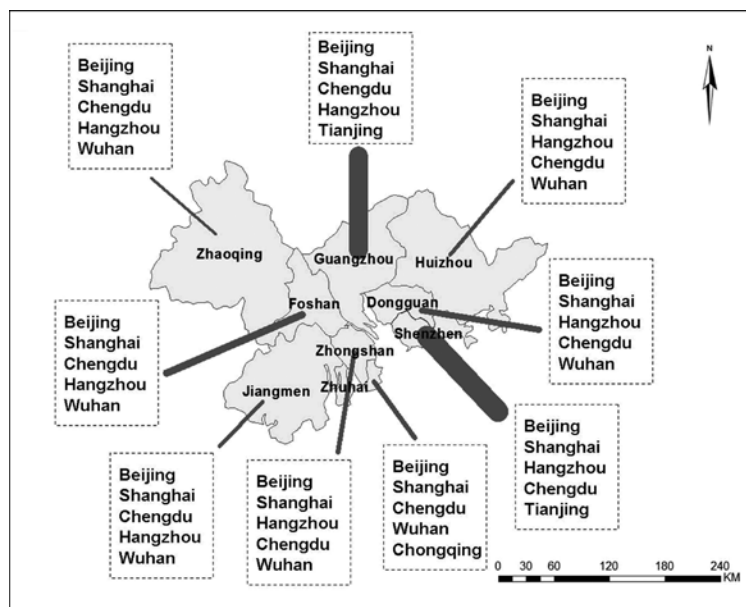


Figure A3. Top five connected global cities of different cities in the PRD

