

Supplemental Materials

Kaplan-Meier curves for overall survival (OS) are shown in Supplementary Figure 1. After adjusting for baseline characteristics, no significant difference in the risk of death was found between the two treatment groups in the overall results (HR = 1.02, 95% CI 0.61 – 1.71, p = 0.945, Supplementary Table 1) or when stratified by treatment line (Supplementary Table 2).

Supplemental Table 1. Unadjusted and Adjusted Hazards Ratios Comparing Everolimus-Based Therapy vs. Endocrine Monotherapy (Overall Survival)

Everolimus-based therapy vs. Endocrine monotherapy ¹	Overall survival		
	HR	95% CI	p-value
Unadjusted	1.15	(0.71,1.85)	0.5743
Multivariable-adjusted²	1.02	(0.61,1.71)	0.9448

*P < 0.05

Notes:

[1] Endocrine monotherapy was the reference group.

[2] The model adjusted for the following variables: age, line of therapy, adjusted CCI, sites of metastatic disease, ECOG performance status, and prior chemotherapy in the mBC setting assessed at the index therapy initiation date, as well as insurance plan type, race, disease status, and months from initiation of the last adjuvant endocrine therapy to the first stage IV mBC diagnosis assessed at mBC diagnosis.

Supplemental Table 2. Hazards Ratios Comparing Everolimus-Based Therapy vs. Endocrine Monotherapy Stratified by Line (Overall Survival)

Everolimus-based therapy vs. Endocrine monotherapy ¹	Overall survival		
	HR	95% CI	P-value
Unadjusted			
Line of therapy 1	0.90	(0.42,1.90)	0.775
Line of therapy 2	1.69	(0.69,4.17)	0.252
Line of therapy 3+	1.13	(0.44,2.86)	0.804
Multivariable-adjusted²			
Line of therapy 1	0.69	(0.29,1.62)	0.396
Line of therapy 2	1.62	(0.64,4.09)	0.309
Line of therapy 3+	1.04	(0.40,2.69)	0.939

*P < 0.05

Notes:

[1] Endocrine monotherapy was the reference group.

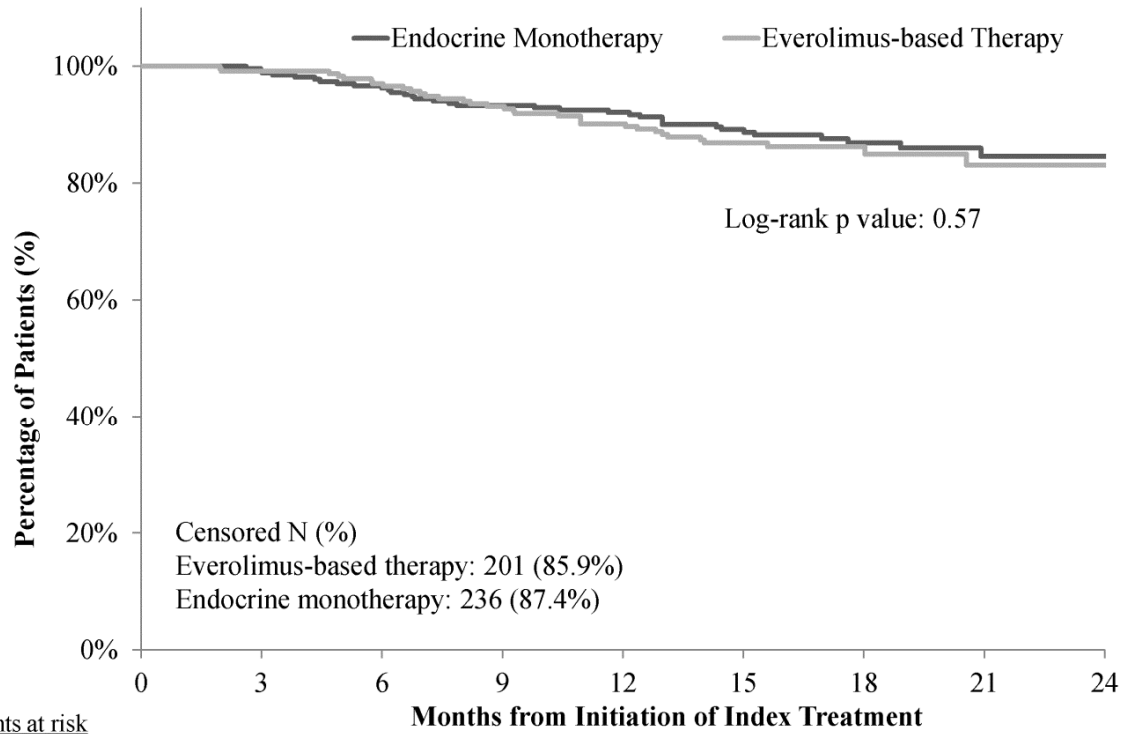
[2] The model adjusted for the following variables: age, line of therapy, adjusted CCI, sites of metastatic disease, ECOG performance status, and prior chemotherapy in the mBC setting assessed at the index therapy initiation date, as well as insurance plan type, race, disease status, and months from initiation of the last adjuvant endocrine therapy to the first stage IV mBC diagnosis assessed at mBC diagnosis.

**performance
status at index
therapy initiation
(ECOG 0)**

ECOG 1	1.1 1	(0.79,1 .55)	0.5 53		1.3 8	(0.96,1. 97)	0.0 80		1. 27	(0.73, 2.22)	0.3 93
ECOG 2	1.5 8	(0.96,2 .59)	0.0 71		1.7 6	(1.04,2. 98)	0.0 35	*	1. 63	(0.67, 3.98)	0.2 86
ECOG 3	19. 45	(8.76,4 3.16)	0.0 00	*	23. 13	(10.22,5 2.34)	0.0 00	*	0. 00	(0.00,.)	0.9 84
None	1.3 3	(0.86,2 .06)	0.1 96		1.5 7	(1.00,2. 48)	0.0 53		1. 74	(0.89, 3.42)	0.1 05
Previous chemotherapy in mBC setting	0.7 1	(0.47,1 .08)	0.1 14		0.9 0	(0.58,1. 39)	0.6 46		N/ A	N/A	N/ A
Duration from initiation of the last adjuvant endocrine therapy to mBC diagnosis	0.9 9	(0.99,1 .00)	0.0 40	*	1.0 0	(0.99,1. 00)	0.5 03		1. 00	(0.99, 1.01)	0.9 01

*P < 0.05

Supplemental Figure 1: Comparison of Overall Survival between Everolimus-Based Therapy and Endocrine Monotherapy



<u>Patients at risk</u>		Months from Initiation of Index Treatment								
	0	3	6	9	12	15	18	21	24	
Everolimus-based Therapy	234	232	227	218	211	173	133	44	44	
Endocrine Monotherapy	270	267	260	247	237	199	125	94	61	