

1 **Title:**

2 Estimation of tibiofemoral static zero position during dynamic drop landing

3

4 **Authors' Names and Affiliations:**

5 Hirofumi Ida

6 Affiliation 1: Department of Human System Science, Tokyo Institute of Technology

7 Affiliation 2: Human Media Research Center, Kanagawa Institute of Technology

8

9 Yasuharu Nagano

10 Affiliation: Department of Health and Sports, Niigata University of Health and Welfare

11

12 Masami Akai

13 Affiliation: National Rehabilitation Center for Persons with Disabilities

14

15 Motonobu Ishii

16 Affiliation: Department of Human System Science, Tokyo Institute of Technology

17

18 Toru Fukubayashi

19 Affiliation: Faculty of Sport Sciences, Waseda University

20

21 **Corresponding Author:**

22 Hirofumi Ida

23 Postal address: 345 East Ohio Street Apt#2411, Chicago, IL 60611, USA (Home)

24 Phone: +1-312-607-7215

25 Fax: +1-312-329-1549

26 E-mail: hiroida@me.com

27 **Keywords (5/5):**

28 Knee secondary motion; *in vivo* motion analysis; ACL injury; coupled motion; motion envelope

29

30 **Abstract (248/250 words):**

31 The aim of this study was to assess the *in vivo* knee secondary motions intrinsic to flexion in isolation
32 from actual displacements during a landing activity. For this purpose a “static zero position”, which
33 denotes the normal tibiofemoral position to the static flexion angle, was introduced to describe the
34 intrinsic secondary motion. The three-dimensional motion data of the healthy knee were collected for 13
35 male and 13 female young adults by using an auto motion analysis system and point cluster technique.
36 First, the relationship between flexion and secondary motion in the static state was determined during a
37 single-leg quasistatic squat. The static zero position during a single-leg drop landing was then calculated
38 by substituting the flexion angle into the flexion-secondary relational expression obtained. The results
39 showed that after the foot-ground contact, the estimated static zero positions shifted monotonically in
40 valgus, internal rotation, and anterior translation in the case of both the male and female groups. For the
41 time-course change, noticeable differences between the actual displacement and estimated static zero
42 position were found from the foot-ground contact up to 25 ms after the contact for the valgus/varus and
43 external/internal rotation, and between 20 and 35 ms after the contact for the anterior/posterior translation.
44 In summary, the static zero position demonstrated relatively modest but not negligible shift in comparison
45 with the actual displacement. The intrinsic tibiofemoral motion, or baseline shift, would be worth taking
46 into account when examining the fundamental function and injury mechanics of knee during an impulsive
47 activity.

48

49

50 **Main Text:**

51 **Introduction**

52 In the tibiofemoral joint, an involuntary axial rotation occurs as the knee flexes or extends. This is
53 known as a “screw-home movement” (SHM) and was first demonstrated using a cadaver specimen ¹⁻⁴. The
54 SHM describes the coupled property in which the tibia automatically rotates externally relative to the
55 femur during passive extension of the knee, and the reverse occurs during knee flexion. Regardless of
56 whether this property is coupled, the rotational motions, *i.e.*, valgus/varus and external/internal rotation,
57 and the translational motions, *i.e.*, lateral/medial translation, anterior/posterior translation, and
58 superior/inferior translation, have been investigated as the knee motions that are intrinsic to flexion,
59 recently termed secondary motions ^{5,6}. As reported previously, application of minimal resistance to the
60 motion of a cadaver knee model by using a rig showed that all of the secondary motions were coupled to
61 passive flexion ⁷. The geometric structure of the femoral epicondyle and mechanical stress of ligaments
62 have been considered anatomical determinants of the coupled motion ⁸⁻¹⁰. In contrast, several studies have
63 described the secondary motion as it lies within a relatively wide range called the envelope of passive
64 flexion ¹¹. Although the notion of coupled motion and that of the envelope conceptually oppose one
65 another, both of these ideas share the view that the motion path is highly sensitive to the external load ⁷.
66 Numerous studies have assessed secondary motion, because it is closely linked to the fundamental knee
67 function in terms of mobility, stiffness, and stability ¹². However, at present, *in vivo* behaviors of these
68 secondary motions remain poorly understood owing to not only the technical difficulty of measurement
69 but also the multifold effects of possible neuromuscular control depending on the type of motor activity.

70
71 The behavior of secondary motion can be analyzed on the basis of three-dimensional (3D) measurement.
72 *In vivo* 6-degree-of-freedom (6DOF) motion of the tibiofemoral joint, sometimes with the patella, has
73 been evaluated to study the function of the living knee by using various apparatuses and devices:
74 computerized electrogoniometers ¹³, intracortical traction marker pins fixed on the bone ¹⁴, clusters of skin
75 marker sets attached to a body segment ⁵, and image matching with 3D bone models and projected images

76 ¹⁵⁻¹⁸. These studies attempted to reveal the typical kinematic patterns of healthy or injured knees during
77 gross motor activities such as gait, lunge, and squat. Nevertheless, little is known about the nature of
78 secondary motion during high-impact activities such as drop landing. The investigation of these strenuous
79 motions will lead to better understandings of the knee function to control an impulsive activity.

80
81 The analysis of 3D motion has also been adopted in studies of injury mechanisms, *e.g.*, identification of
82 the kinematic risk factors for noncontact anterior cruciate ligament (ACL) injury. Several previous studies
83 have examined the rotational and translational displacements of the tibiofemoral joint during risk motions,
84 such as drop landing or cutting, and have shown that the valgus and external/internal rotation of the tibia
85 at slight knee flexion were kinematic risk factors for ACL injury ¹⁹⁻²¹. The kinematic data obtained,
86 however, could not be separated into intrinsic motion under static conditions, such as quiet weight-bearing,
87 and extrinsic motion due to dynamic effects, such as landing impact or rapid muscle contraction. It has
88 been shown that the knee frontal plane angle during several landing tasks, *i.e.*, stepping down, single-leg
89 landing and drop vertical jumping, were substantially different from that during static standing ²². The
90 findings of this previous study also suggested that neuromuscular mechanisms contribute to the consistent
91 control across these dynamic activities. Examination of the discrepancies between the static and dynamic
92 effects by using a 3D analysis might provide further insight into the injury mechanism. For this purpose,
93 an effective approach would be to separate the intrinsic secondary motion in a static state from the net
94 displacements during an impulsive activity.

95
96 The objective of this study was to assess the static secondary motions of the healthy knee intrinsic to
97 flexion in isolation from the total displacements during a dynamic landing activity. The authors introduced
98 the notion of “static zero position” that represents the normal position of the tibiofemoral joint in a state of
99 static equilibrium. If the static zero position shifts with the knee flexion angle as typically demonstrated by
100 the SHM, it is regarded as a baseline shift in the tibia-femur relative motion. A comparison between the
101 actual displacement and estimated static zero position during a gross motor activity could provide

102 knowledge about not only fundamental knee motor function but also knee injury mechanism.

103

104 **Materials and Methods**

105 Thirteen healthy male young adults, mean age 23.2 years (range 20-27), and 13 healthy female
106 counterparts, mean age 22.8 years (range 18-27), participated in this study. Informed consent was obtained
107 from the subjects, and the study was approved by an ethics committee of the National Rehabilitation
108 Center for Persons with Disabilities. The right knee was studied if a history of leg injury was absent;
109 otherwise, the left knee was chosen for testing. Twelve right and 1 left knee for the male subjects, and 11
110 right and 2 left knees for the female subjects were investigated. Because complete data were not obtained
111 for 2 female subjects after the estimation of the static zero position was started, these 2 subjects were
112 excluded from all of the subsequent analyses. Numerous studies have shown significant sex-based
113 influences on knee kinematics, thus the assessments of the static zero position were basically performed
114 separately for the male and female groups.

115

116 In this study, a point cluster technique (PCT) that outputs the *in vivo* 6DOF rotational and translational
117 displacements of the tibiofemoral joint was used to collect the 3D kinematic data^{23,24}. The PCT has been
118 used to estimate ACL strain²⁵, identify the kinematic risk factors for ACL injury,^{19,20} compare the
119 rotational stability between single- and double-bundle ACL reconstructions²⁶, and calculate the knee joint
120 moment²⁷. Among the 6DOF data, the present study examined the valgus/varus, external/internal rotation,
121 and anterior/posterior translation that were discussed in a relevant previous study⁵.

122

123 The subjects were asked to perform 3 motor tasks barefoot: quiet standing, single-leg quasistatic squat,
124 and single-leg drop landing. First, the subjects were instructed to maintain a quiet upright standing stance
125 with their feet shoulder-width apart for 1 s, as the rest position trial of the PCT procedure. Second,
126 single-leg quasistatic squat was performed 3 times with their foot in the neutral position; the test knee was
127 slowly flexed over 5 s from full extension to deep flexion (Fig. 1), simulating the motion of the

128 subsequent drop landing task. A fluoroscopic study has shown that a slow squatting motion is likely to
129 produce equivalent knee kinematics compared to a series of completely static squats ¹⁸. Finally, the
130 subjects executed the single-leg drop landing 3 times in neutral foot position from a 30-cm-high platform
131 to a 30-cm forward landing point with their hands on their hips.

132
133 The 3D coordinate data of the 3 motor tasks were collected using a 6-camera retroreflective auto
134 motion capture system (Hawk Digital RealTime System, Motion Analysis, Inc., Santa Rosa, CA, USA) at
135 a sampling rate of 200 Hz. The vertical ground reaction force was also monitored using a force platform
136 (9287A, Kistler Japan Co., Ltd., Tokyo, Japan) at a sampling rate of 1 kHz during quasistatic squat and
137 drop landing. The force platform was synchronized with the auto motion capture system.

138
139 The arrangement of skin markers attached to the test leg followed the empirical pattern of our PCT
140 procedure (Fig. 1). In total, 24 markers included 10 and 6 on the thigh and shank segments, respectively,
141 as a cluster marker set, and markers on the great trochanter (1), the lateral and medial epicondyles of the
142 femur (2), the lateral and medial edges of the tibia plateau (2), the lateral (fibula) and medial malleoli (2),
143 and the fifth metatarsophalangeal joint (1) as bone landmarks.

144
145 For the rest position trial, the PCT algorithm carried out a principal axis transformation on the
146 assumption that each cluster marker had a unit mass, and the cluster coordinate system obtained was
147 transformed to a bone coordinate system fixed on the bone landmarks ²³. A bone coordinate system was
148 also derived for each frame of quasistatic squat and drop landing with optimized masses. The
149 displacements of the tibiofemoral joint were defined with the vector projection onto a joint coordinate
150 system ²⁸. This approach has the advantage of reporting the rotational and translational displacements in
151 clinical terminology ²⁹. First, the longitudinal axis of the shank was chosen as the superior(+)/inferior(-)
152 axis (e_3 in Grood & Suntay). The anterior(+)/posterior(-) axis (e_2) was then obtained by computing the
153 cross product of the superior/inferior axis and a tentative transverse axis from the medial to lateral

154 epicondyle of the femur. Finally, the lateral(+)/medial(-) axis (e_1) was determined as the cross product of
155 the anterior/posterior axis and superior/inferior axis. All the displacements were described as the tibial
156 displacement relative to the femur.

157
158 The estimation accuracy of our PCT algorithm was assessed using a dummy leg model for which the
159 thigh and shank segments were shaped out of Styrofoam, and an aluminum precision stage was installed
160 as the knee joint. The installed precision stages were the gonio stage, rotation stage, and XY stage, which
161 is equivalent to valgus/varus, external/internal rotation, and anterior/posterior translation, respectively. The
162 minimum scales of these stages were 0.1 deg, 0.08 deg, and 0.01 mm, respectively. The root mean square
163 errors between the stage scales and values calculated by PCT were 0.079 deg for valgus of 0 to 12 deg,
164 0.24 deg for rotation of 0 to 12 deg, and 0.38 mm for anterior translation of 0 to 12 mm²⁴.

165
166 For each secondary motion, the average curve of the 3 quasistatic squatting trials within the individual
167 subject was plotted versus the flexion angle. This averaged curve was considered the static
168 flexion-secondary relation ($f_{\text{flexion-secondary}}$) that converted the flexion angle (θ_{static}) into one of the secondary
169 motion (α_{static}), assuming a static equilibrium state under the weight-bearing condition:

170
171
$$\alpha_{\text{static}} = f_{\text{flexion-secondary}}(\theta_{\text{static}})$$

172
173 where the conversion relation was determined for every 1 degree of the flexion angle. One of the static
174 zero position during the drop landing ($\alpha_{\text{static zero position}}$) was estimated by substituting the flexion angle (θ_{drop}
175 landing) during the task into the static flexion-secondary relations obtained above:

176
177
$$\alpha_{\text{static zero position}} = f_{\text{flexion-secondary}}(\theta_{\text{drop landing}})$$

178

179 The flexion angle ($\theta_{\text{drop landing}}$) was substituted for every 1 frame (5 ms) of the motion capture data from
180 the foot-ground contact ($T = 0$) to 80 ms after the contact.

181
182 Statistical tests were performed using statistical software (SPSS 17.0, SPSS Japan Inc., Tokyo, Japan).
183 Independent samples t -test was conducted to test the difference between the male and female groups for
184 the vertical ground reaction force and the actual displacement of the secondary motion during the drop
185 landing. Cohen's d was also used to estimate effect size of the difference. The significance level was set at
186 alpha = 0.05. The difference between the actual displacement and estimated static zero position within
187 each sex group was tested using paired samples t -test for every 1 frame in a time-course curve. For these
188 frame-by-frame multiple comparisons (total, 17 frames), a Bonferroni correction was used to avoid
189 inflation of the alpha level ($0.05/17 = 0.0029$)

190

191 **Results**

192 Figure 2 shows typical data of the knee flexion angle and vertical ground reaction force during
193 quasistatic squat. The vertical ground reaction force was almost constant, or had no typical trend, over the
194 task duration. These were observed for all subjects and indicated that all of them successfully performed
195 the quasistatic squat as required. Therefore, quasistatic squat was regarded as the static state sequence at
196 the corresponding flexion angle; *i.e.*, no dynamic effect on the secondary motion was observed.

197

198 Figure 3 shows the typical secondary motion curve plotted versus the flexion angle during quasistatic
199 squat. These secondary motions were similar in time-course tendency among the 3 trials for an individual
200 subject, while remarkable variation was observed among the subjects by visual inspection. Among the
201 male subjects ($n = 13$), 9 showed valgus, 12 showed internal rotation, and 11 showed anterior translation of
202 the tibia as the knee flexed; the remaining subjects were opposite. Similarly, among the female subjects (n
203 = 11; 2 others had been excluded), 10 showed valgus, 8 showed internal rotation, and 11 showed anterior
204 translation of the tibia. It should be noted that the position was defined relative to the neutral tibia-femur

205 position derived from the rest position trial (quiet standing).

206

207 During drop landing, the vertical ground reaction force showed a peak of mean 362%BW (*SD* 61) at *T*
208 = 38.8 ms (*SD* 11.6) and 327%BW (*SD* 48) at *T* = 47.3 ms (*SD* 8.8) for the male and females groups,
209 respectively. No significant differences were observed between the sex groups with regard to normalized
210 peak value ($t(22) = 1.55, P = 0.135, d = 0.66$), and peak time ($t(22) = 1.98, P = 0.060, d = 0.85$).

211

212 The solid line in Figure 4 shows the actual displacement of secondary motion from the foot-ground
213 contact to 80 ms after the contact during drop landing. The position of the secondary motion at the
214 foot-ground contact is shown in Table 1. None of these landing positions showed significant differences
215 between the male and female groups. In addition, the value and time of typical peaks are shown in Table 2.
216 The valgus peak time was significantly earlier in the male group than in the female group, but the other
217 peak values and peak times did not show any significant differences between the sex groups.

218

219 In addition to the actual displacement, the estimated static zero position during the drop landing is
220 shown in Figure 4. The estimated static zero position at the foot-ground contact was valgus, internally
221 rotated, and anterior translated position in the mean value for both the male and female groups. Thereafter,
222 the estimated static zero position shifted monotonically in valgus, internal rotation, and anterior translation
223 for both the sex groups. The *P* value of Student's *t*-tests between the actual displacement and estimated
224 static zero position is shown for every 1 frame at the bottom of each graph. Low *P* values (< 0.0029 with
225 Bonferroni correction) were mainly found in $T \leq 25$ ms for the valgus/varus and external/internal rotation,
226 and between $T = 20$ and 35 ms for the anterior/posterior translation (filled circles in Fig. 4).

227

228 Discussion

229 This study examined the actual rotational and translational displacements of the tibiofemoral joint
230 during a drop landing task compared with the shift of the static zero position in which the knee was

231 assumed to be in static equilibrium. The static zero position was estimated by an extrapolative substitution
232 of the flexion angle into flexion-secondary relations derived from quasistatic weight-bearing squat. This
233 procedure allowed direct comparisons between the static (intrinsic) and dynamic (extrinsic) effects on the
234 joint motion (Fig. 4). The results of this study have 2 potential contributions in clinical practice. First, they
235 deepen the knowledge of the function of knee secondary motion during an impulsive activity aside from
236 the SHM. Second, they offer suggestions about the kinematic mechanism of knee injury.

237

238 Previous studies showed that secondary motion was coupled to knee flexion when static weight-bearing
239 tasks were performed by healthy subjects^{15, 17} and ACL-deficient subjects¹⁶, although the kinematic
240 pattern significantly changed depending on whether the subjects were healthy. In general, quantitative
241 comparisons with other reports might elicit misunderstanding about joint kinematics because of
242 differences in motor tasks and definitions of coordinate systems¹⁷. However, the secondary motion plotted
243 versus the flexion angle during quasistatic squat (Fig. 3) qualitatively agreed with the conventions of
244 kinematic pattern, *i.e.*, valgus, internal rotation of the tibia (as the SHM describes), and anterior translation
245 of the tibia. High repeatability in the time-course trend among 3 trials for each subject supported the
246 coupled property of secondary motion. On the other hand, apparently large variability between subjects
247 did not contradict the *in vitro* result that the shape of the coupled path varies between knees⁷. Furthermore,
248 the fact that not all male subjects and not all female subjects showed the same displacement pattern for
249 each secondary motion, except for the anterior translation in the female group, also supported the result of
250 the *in vitro* study.

251

252 Meanwhile, a previous study has shown that during the stance phase of walking there are substantial
253 offsets in the secondary external/internal rotation and anterior/posterior translation at identical flexion
254 angles⁵. The findings of this previous study suggested that the secondary motions possibly occur within a
255 range of motion envelope during a dynamic weight-bearing activity such as walking. This previous study
256 also showed that the secondary motions during a non-weight-bearing active leg extension-and-flexion

257 cycle task had no such offsets but followed the same pathways for both of the reciprocating phases. In the
258 current study, discrepancies between the actual displacement and estimated static zero position were
259 observed during the drop landing (Fig. 4). These discrepancies could be attributed to the broadened
260 motion within an envelope due to the dynamic weight-acceptance control during landing activity. The
261 envelope appeared depending on the external load, muscular activation, and type of gross activity as well
262 as the knee flexion angle, and the boundaries of this envelope would be determined by passive bone and
263 soft tissue structures ⁵.

264
265 Interestingly, even at the foot-ground contact, the actual displacement and estimated static zero position
266 were different from each other in valgus/varus and external/internal rotation in the male group and in
267 external/internal rotation in the female group (see *P* value at *T* = 0 in Fig. 4). This might have been caused
268 by a preparatory muscle contraction before foot-ground contact. Many studies have shown that the
269 intensive muscle contraction of the quadriceps occurred in the pre-contact phase ^{30,31}. However, the
270 anterior/posterior translation at the foot-ground contact, which could be directly related to the preparatory
271 quadriceps contraction, showed no differences between the actual displacement and estimated static zero
272 position for both the male and female groups. This suggests that other complicating factors, such as the
273 presence of a ground reaction force or the hamstrings/quadriceps ratio, masked the effect of quadriceps
274 contraction on anterior translation.

275
276 A kinematic mechanism of ACL injury has been estimated with 3D motion analysis *in vivo* ^{19,20,22}. For
277 example, internal tibial rotation combined with valgus rotation of the knee has been proposed as the injury
278 mechanism during a single limb drop landing. However, the measured displacement of secondary motion
279 thus far has not separated the motion induced by a dynamic effect from that induced by a static effect.
280 Because in some cases, the secondary motion was intrinsically coupled to flexion in static weight-bearing
281 activity ¹⁷, not only the quality of overall displacement but also the quantity of net displacement should be
282 evaluated to discuss the risky kinematics. One way to obtain the net displacement is to subtract the

283 estimated static zero position from the actual displacement.

284

285 The result of actual valgus, internal rotation, and anterior translation displacement during drop landing
286 supports the findings of several studies^{19,21}; in contrast, slight varus has been reported in a study using
287 biplane fluoroscopy³². In all secondary motions, the actual displacement changed drastically, while the
288 estimated static zero position changed monotonically and moderately after the foot-ground contact. An *in*
289 *vivo* case study showed that the ACL strain peaked around the peak of ground reaction force³³. In this
290 study, the vertical ground reaction force of the male group peaked at mean $T = 38.8$ ms (SD 11.6) during
291 drop landing. For the valgus/varus and external/internal rotation, wide gaps (low P value) between the
292 actual displacement and estimated static zero position were observed at an earlier phase than the peak time
293 of the vertical ground reaction force, typically at $T \leq 25$ ms (Fig. 4). The anterior translation, however,
294 showed such a gap from $T = 25$ to 35 ms that it was relatively close to the reaction force peak. In
295 particular, a steep peak of the anterior translation was also observed in this duration. These results suggest
296 that the vertical ground reaction force can be more strongly related to the anterior translation of the tibia
297 than the other secondary motions. Similar patterns were also observed in the female group, although the
298 peak time of the vertical ground reaction force, mean $T = 47.3$ ms (SD 8.8), approached significance later
299 than it did that in the male group ($P = 0.060$).

300

301 The procedure of estimating the static zero position can also be applied to activities under
302 non-weight-bearing conditions. The coupled property was also reported for the non-weight-bearing task of
303 leg extension on a chair⁵. A pilot study insisted that the timing of the peak ACL strain was estimated at 55
304 ms prior to the foot-ground contact during a jump landing²⁵. Examination of the differences between
305 static and dynamic conditions might also serve as the basis for future studies on non-weight-bearing
306 activities.

307

308 The limitation of this study was the task-dependency of the measured activities. The quasistatic squat

309 performed by the subjects was exclusively the static simulation of the single-leg drop landing used in this
310 study; thus, the other dynamic task, such as cutting or double-leg landing, may need another quasistatic
311 task to obtain intended flexion-secondary motion expressions. On the other hand, in terms of control of the
312 ground reaction force, it must be taken into account that quasistatic squat was an activity bearing constant
313 weight (body weight), while drop landing was performed under an inconsistent ground reaction force. For
314 strict simulation of the drop landing situation, the ground reaction force should also be duplicated. In
315 addition, although this study showed the anterior/posterior translation as Dyrby and Andriacchi (2004) did,
316 this parameter might potentially have a large error ⁶. Finally, the change in the shape of the thigh and
317 shank muscles might contaminate the data of the secondary motions.

318
319 In conclusion, for the knee secondary motion, the actual displacement and estimated static zero position
320 during drop landing differ from each other both in temporal pattern and in absolute amplitude. Although
321 the shift of the static zero position was relatively modest as compared with the actual displacement, it
322 appeared not to be negligible in magnitude. The discrepancies between static and dynamic effects can be
323 attributed to the conceptually contradicting nature, *i.e.*, coupled and envelope.

324

325 **Acknowledgements**

326 This work was supported by Grant-in-Aid of Japan Society for the Promotion of Science (KAKENHI
327 19650179 and KAKENHI 22240070).

328

329 **References**

- 330 1. Hallen LG, Lindahl O. The "screw-home" movement in the knee-joint. Acta Orthop Scand.
331 1966;37: 97-106.
- 332 2. Markolf KL, Mensch JS, Amstutz HC. Stiffness and laxity of the knee--the contributions of the
333 supporting structures. A quantitative in vitro study. J Bone Joint Surg Am. 1976;58: 583-94.
- 334 3. Shoemaker SC, Adams D, Daniel DM, Woo SL. Quadriceps/anterior cruciate graft interaction.

335 An in vitro study of joint kinematics and anterior cruciate ligament graft tension. Clin Orthop Relat Res.
336 1993;294: 379-90.

337 4. Trent PS, Walker PS, Wolf B. Ligament length patterns, strength, and rotational axes of the
338 knee joint. Clin Orthop Relat Res. 1976;117: 263-70.

339 5. Dyrby CO, Andriacchi TP. Secondary motions of the knee during weight bearing and
340 non-weight bearing activities. J Orthop Res. 2004;22: 794-800.

341 6. Wang H, Zheng NN. Knee joint secondary motion accuracy improved by quaternion-based
342 optimizer with bony landmark constraints. J Biomech Eng. 2010;132: 124502.

343 7. Wilson DR, Feikes JD, Zavatsky AB, O'Connor JJ. The components of passive knee movement
344 are coupled to flexion angle. J Biomech. 2000;33: 465-73.

345 8. Bailey H. Physical signs in clinical surgery. Bristol: John Wright & Sons Ltd., 1960.

346 9. Fukubayashi T, Torzilli PA, Sherman MF, Warren RF. An in vitro biomechanical evaluation of
347 anterior-posterior motion of the knee. Tibial displacement, rotation, and torque. J Bone Joint Surg Am.
348 1982;64: 258-64.

349 10. Wilson DR, Feikes JD, O'Connor JJ. Ligaments and articular contact guide passive knee
350 flexion. J Biomech. 1998;31: 1127-36.

351 11. Blankevoort L, Huijskes R, de Lange A. The envelope of passive knee joint motion. J Biomech.
352 1988;21: 705-20.

353 12. Solomonow M, Krogsgaard M. Sensorimotor control of knee stability. A review. Scand J Med
354 Sci Sports. 2001;11: 64-80.

355 13. Li XM, Liu B, Deng B, Zhang SM. Normal six-degree-of-freedom motions of knee joint during
356 level walking. J Biomech Eng. 1996;118: 258-61.

357 14. Lafortune MA, Cavanagh PR, Sommer HJ, 3rd, Kalenak A. Three-dimensional kinematics of
358 the human knee during walking. J Biomech. 1992;25: 347-57.

359 15. Asano T, Akagi M, Tanaka K, Tamura J, Nakamura T. In vivo three-dimensional knee
360 kinematics using a biplanar image-matching technique. Clin Orthop Relat Res. 2001;388: 157-66.

- 361 16. Defrate LE, Papannagari R, Gill TJ, Moses JM, Pathare NP, Li G. The 6 degrees of freedom
362 kinematics of the knee after anterior cruciate ligament deficiency: an in vivo imaging analysis. *Am J*
363 *Sports Med.* 2006;34: 1240-6.
- 364 17. Li G, Papannagari R, Nha KW, Defrate LE, Gill TJ, Rubash HE. The coupled motion of the
365 femur and patella during in vivo weightbearing knee flexion. *J Biomech Eng.* 2007;129: 937-43.
- 366 18. Mu S, Moro-Oka T, Johal P, Hamai S, Freeman MA, Banks SA. Comparison of static and
367 dynamic knee kinematics during squatting. *Clin Biomech.* 2011;26: 106-8.
- 368 19. Nagano Y, Ida H, Akai M, Fukubayashi T. Gender differences in knee kinematics and muscle
369 activity during single limb drop landing. *Knee.* 2007;14: 218-23.
- 370 20. Nagano Y, Ida H, Akai M, Fukubayashi T. Biomechanical characteristics of the knee joint in
371 female athletes during tasks associated with anterior cruciate ligament injury. *Knee.* 2009;16: 153-8.
- 372 21. Olsen OE, Myklebust G, Engebretsen L, Bahr R. Injury mechanisms for anterior cruciate
373 ligament injuries in team handball: a systematic video analysis. *Am J Sports Med.* 2004;32: 1002-12.
- 374 22. Harty CM, DuPont CE, Chmielewski TL, Mizner RL. Intertask comparison of frontal plane
375 knee position and moment in female athletes during three distinct movement tasks. *Scand J Med Sci*
376 *Sports.* 2011;21: 98-105.
- 377 23. Andriacchi TP, Alexander EJ, Toney MK, Dyrby C, Sum J. A point cluster method for in vivo
378 motion analysis: applied to a study of knee kinematics. *J Biomech Eng.* 1998;120: 743-9.
- 379 24. Ida H, Nagano Y, Fukubayashi T, Akai M. Measurement of in vivo motion of the knee:
380 assessment and application of the point cluster technique. *SICE Annual Conference Okayama, 2005:* p.
381 1255-58.
- 382 25. Taylor KA, Terry ME, Utturkar GM, Spritzer CE, Queen RM, Irribarra LA, et al. Measurement
383 of in vivo anterior cruciate ligament strain during dynamic jump landing. *J Biomech.* 2011;44: 365-71.
- 384 26. Misonoo G, Kanamori A, Ida H, Miyakawa S, Ochiai N. Evaluation of tibial rotational stability
385 of single-bundle vs. anatomical double-bundle anterior cruciate ligament reconstruction during a
386 high-demand activity - A quasi-randomized trial. *Knee.* 2011.

387 27. Ishii H, Nagano Y, Ida H, Fukubayashi T, Maruyama T. Knee kinematics and kinetics during
388 shuttle run cutting: comparison of the assessments performed with and without the point cluster technique.
389 J Biomech. 2011;44: 1999-2003.

390 28. Grood ES, Suntay WJ. A joint coordinate system for the clinical description of
391 three-dimensional motions: application to the knee. J Biomech Eng. 1983;105: 136-44.

392 29. Wu G, Siegler S, Allard P, Kirtley C, Leardini A, Rosenbaum D, et al. ISB recommendation on
393 definitions of joint coordinate system of various joints for the reporting of human joint motion--part I:
394 ankle, hip, and spine. International Society of Biomechanics. J Biomech. 2002;35: 543-8.

395 30. Chappell JD, Creighton RA, Giuliani C, Yu B, Garrett WE. Kinematics and electromyography
396 of landing preparation in vertical stop-jump: risks for noncontact anterior cruciate ligament injury. Am J
397 Sports Med. 2007;35: 235-41.

398 31. Zazulak BT, Ponce PL, Straub SJ, Medvecky MJ, Avedisian L, Hewett TE. Gender comparison
399 of hip muscle activity during single-leg landing. J Orthop Sports Phys Ther. 2005;35: 292-9.

400 32. Myers CA, Torry MR, Peterson DS, Shelburne KB, Giphart JE, Krong JP, et al. Measurements
401 of tibiofemoral kinematics during soft and stiff drop landings using biplane fluoroscopy. Am J Sports Med.
402 2011;39: 1714-22.

403 33. Cerulli G, Benoit DL, Lamontagne M, Caraffa A, Liti A. In vivo anterior cruciate ligament
404 strain behaviour during a rapid deceleration movement: case report. Knee Surg Sports Traumatol Arthrosc.
405 2003;11: 307-11.

406

407

408

409 **Table Titles:**

410 Table 1. Position of secondary motion at foot-ground contact during drop landing

411 Table 2. Peak value and peak time of secondary motion during drop landing

412

413 **Figure Legends:**

414 Figure 1. Single-leg quasistatic squat.

415 Figure 2. Typical flexion angle and vertical ground reaction force during quasistatic squat (male subject
416 #08).

417 Figure 3. Typical phase plot of secondary motion versus the flexion angle during quasistatic squat (a-c:
418 male subject #08, d-f: female subject #09).

419 Figure 4. Mean time-course change (error bar: *SD*) of actual displacement (solid line) and estimated static
420 zero position (dotted line) during drop landing for male (a-c) and female (d-f) subjects, and *P* value (right
421 axis) at each frame. Filled circle (•) indicates significant difference with Bonferroni correction ($P <$
422 $0.05/17(\text{frames}) = 0.0029$).

423

Table 1. Position of secondary motion at foot-ground contact during drop landing

	Male		Female		<i>P</i>	<i>d</i>
	<i>M</i>	<i>SD</i>	<i>M</i>	<i>SD</i>		
Valgus(+)/varus(-) (deg)	-2.3	5.5	0.8	5.4	0.180	0.59
External(+)/internal(-) rotation (deg)	-0.6	7.0	-2.6	6.5	0.368	0.39
Anterior(+)/posterior(-) translation (cm)	0.51	0.61	0.24	0.75	0.349	0.41

Table 2. Peak value and peak time of secondary motion during drop landing

	Male		Female		<i>P</i>	<i>d</i>
	<i>M</i>	<i>SD</i>	<i>M</i>	<i>SD</i>		
Varus peak value (deg)	-1.6	1.3	-3.1	3.6	0.210	0.61
Varus peak time (ms)	23.1	4.3	27.3	9.3	0.192	0.62
Valgus peak value (deg)	7.5	3.2	11.1	5.5	0.060	0.85
Valgus peak time (ms)*	56.5	12.6	70.9	6.6	0.003	1.45
Internal rotation peak value (deg)	-15.9	5.3	-14.8	6.6	0.641	0.20
Internal rotation peak time (ms)	56.2	15.0	55.5	7.6	0.885	0.06
Anterior translation peak value (cm)	0.76	0.32	0.84	0.40	0.581	0.24
Anterior translation peak time (ms)	29.2	5.7	29.1	6.6	0.956	0.02

*: $P < 0.05$

Figure(s)
[Click here to download high resolution image](#)



Figure 1

Figure(s)
[Click here to download high resolution image](#)

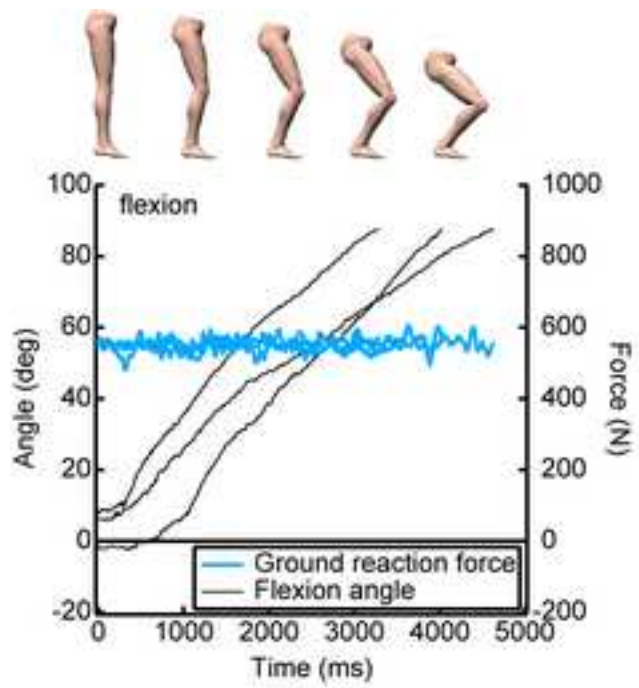


Figure 2

Figure(s)

[Click here to download high resolution image](#)

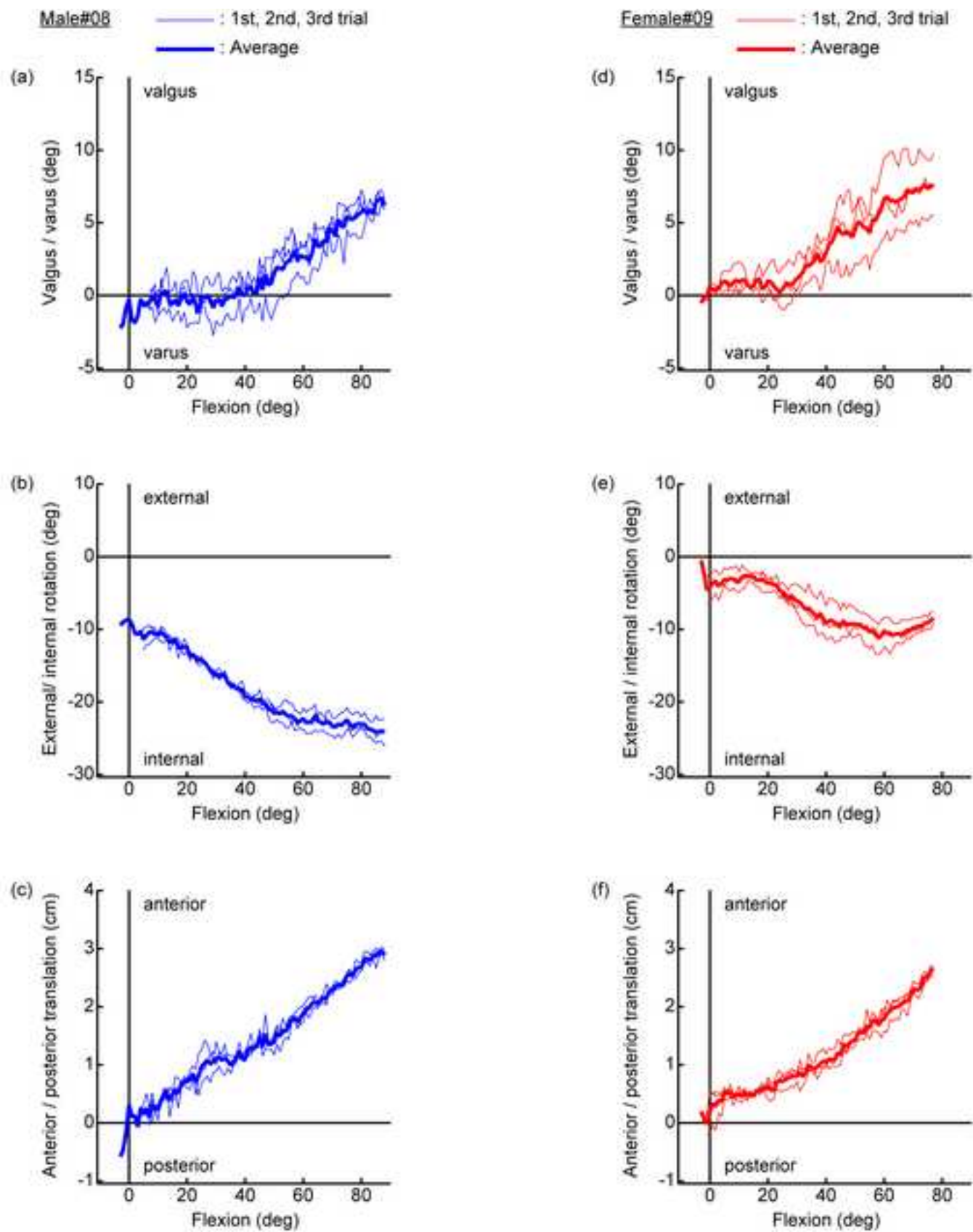


Figure 3

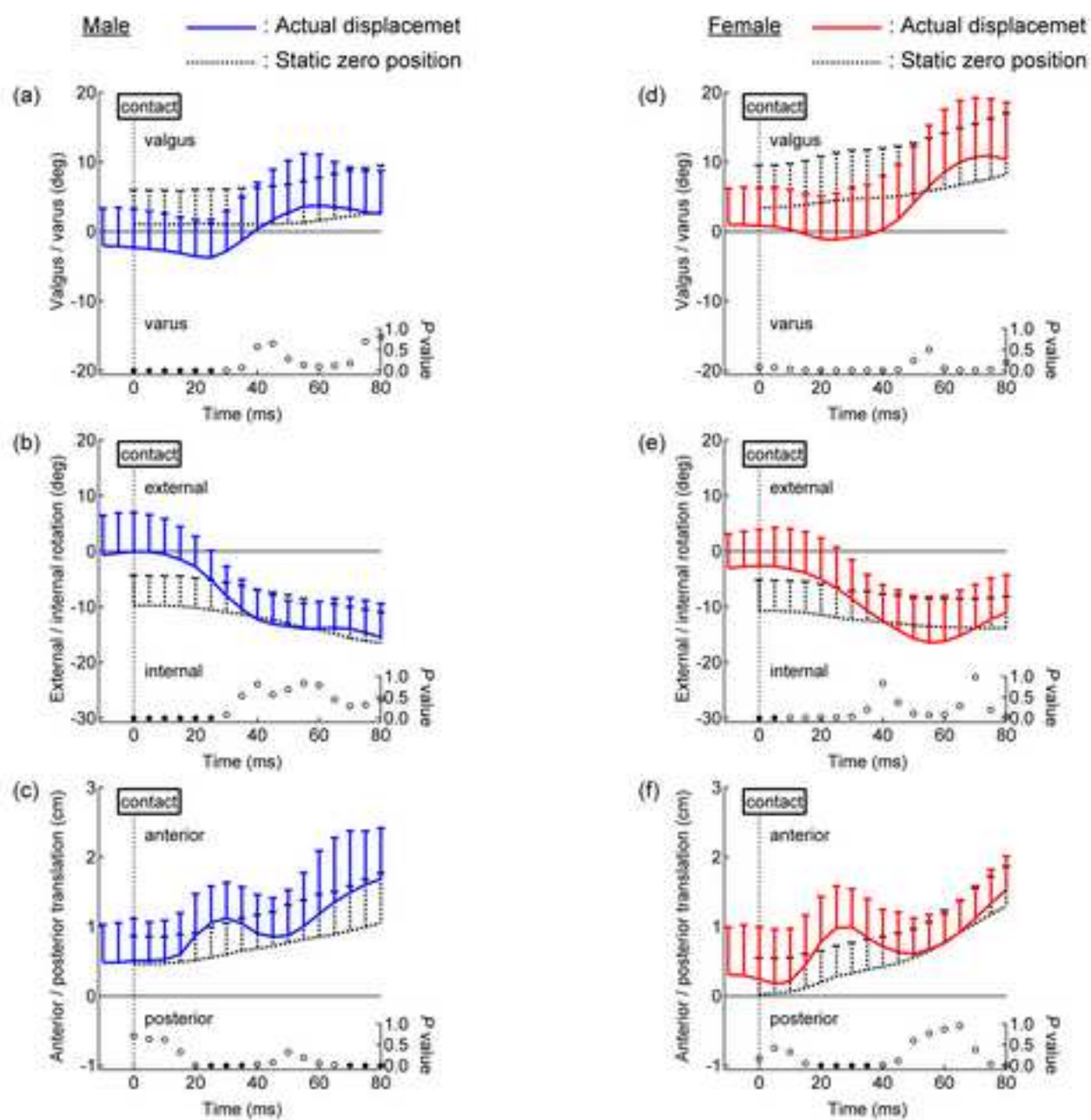


Figure 4