

## Spatiotemporal Distributions of Migratory Birds: Patchy Models with Delay\*

Stephen A. Gourley<sup>†</sup>, Rongsong Liu<sup>‡</sup>, and Jianhong Wu<sup>§</sup>

**Abstract.** We derive and analyze a mathematical model for the spatiotemporal distribution of a migratory bird species. The birds have specific sites for breeding and winter feeding, and usually several stopover sites along the migration route, and therefore a patch model is the natural choice. However, we also model the journeys of the birds along the flyways, and this is achieved using a continuous space model of reaction-advection type. In this way proper account is taken of flight times and in-flight mortalities which may vary from sector to sector, and this information is featured in the ordinary differential equations for the populations on the patches through the values of the time delays and the model coefficients. The seasonality of the phenomenon is accommodated by having periodic migration and birth rates. The central result of the paper is a very general theorem on the threshold dynamics, obtained using recent results on discrete monotone dynamical systems, for birth functions which are subhomogeneous. For such functions, depending on the spectral radius of a certain operator, either there is a globally attracting periodic solution, or the bird population becomes extinct. Evaluation of the spectral radius is difficult, so we also present, for the particular case of just one stopover site on the migration route, a verifiable sufficient condition for extinction or survival in the form of an attractive periodic solution. This threshold is illustrated numerically using data from the U.S. Geological Survey on the bar-headed goose and its migration to India from its main breeding sites around Lake Qinghai and Mongolia.

**Key words.** migratory bird, cyclic feedback, delay, periodic system, threshold dynamics, Floquet multiplier, monotone dynamical system

**AMS subject classifications.** 34D23, 34K13, 34K25, 34K60, 92D25

**DOI.** 10.1137/090767261

**1. Introduction.** Seasonal bird migration is a major biological phenomenon, with billions of birds extending over distances from the Arctic to the Antarctic using eight broad overlapping corridors during annual cycles. A typical migration process involves different phases based on the consequences of biological activities and seasonality, such as wintering, spring migration, breeding, maturation, and autumn migration. Migration routes are “interrupted” by major nodes, the so-called stopovers, which provide the resting locations between the flights for refueling and for recovering from climatic and physiological stress [1, 4, 9].

Describing the spatiotemporal patterns of migratory birds along a typical migration route is of critical importance for the management of relevant ecosystems and of great interest for

---

\*Received by the editors August 5, 2009; accepted for publication (in revised form) by C. Chavez March 30, 2010; published electronically June 3, 2010. This work was supported in part by CRC, GEOIDE, MITACS, NSERC, and start-up funds from EPSCoR at the University of Wyoming.

<http://www.siam.org/journals/siads/9-2/76726.html>

<sup>†</sup>Corresponding author. Department of Mathematics, University of Surrey, Guildford, Surrey GU2 7XH, UK ([s.gourley@surrey.ac.uk](mailto:s.gourley@surrey.ac.uk)).

<sup>‡</sup>Department of Mathematics and Department of Zoology & Physiology, University of Wyoming, Laramie, WY 82071 ([rliu1@uwyo.edu](mailto:rliu1@uwyo.edu)).

<sup>§</sup>Centre for Disease Modeling, York Institute for Health Research, Laboratory for Industrial and Applied Mathematics, York University, Toronto, ON, M3J 1P3, Canada ([wujh@yorku.ca](mailto:wujh@yorku.ca)).

the control of diseases involving both migratory and domestic birds. This is particularly so in dealing with the rapid and persistent highly pathogenic avian influenza H5N1 spread between continents and frequent worldwide outbreaks in poultry, wild birds, and humans [10]. As the role of migratory birds in this global H5N1 spread has been the focus for debate in the academic and public health communities, comparing the stable spatiotemporal patterns with the global surveillance of migratory birds should provide some insights behind the global transmission dynamics of avian influenza. An initial step towards this comparison is a qualitative analysis of the spatial distribution of migratory birds in an annual cycle under a wide range of assumptions about the breeding, feeding, and migration, all of which are highly seasonal.

The purpose of this work is to formulate a patch model to describe the temporal evolution of the migratory birds within each stopover and to provide some qualitative analysis of the long term dynamics of such a model. For the sake of simplicity, we will consider a one-dimensional migration route with multiple stopovers, and the proposed model then takes the form of a periodic system of delay differential equations with multiple delays which account for the time needed for migratory birds to fly from one stopover to the next (section 2). The threshold dynamics of the model will be established using some recent results on discrete monotone dynamical systems, and the threshold parameter will be linked to the spectral radius of the Poincaré map by the classical Krein–Rutman theorem (section 3). Calculation of this threshold parameter is challenging; however, estimating this parameter from model coefficients is possible in some representative cases (section 4). We also provide, in section 5, some numerical simulations to illustrate this threshold dynamics and to depict the stable spatiotemporal patterns of bird populations among the stopovers.

Our conclusions about the threshold dynamics relies on applications of the Krein–Rutman theorem for strictly positive compact linear operators and some general results for strongly monotone dynamical systems with subhomogeneous nonlinearities. It is interesting to note, in section 2, that the associated discrete maps (dynamical systems) do not have the required strong monotonicity in the usual phase space of a system of delay differential equations and that this lack of strong monotonicity arises very naturally from the seasonality of the bird migration. This motivates us to introduce a quotient space of the usual phase space by a closed subspace that is determined by the migration patterns of birds.

**2. Model formulation.** Migration routes are often one-dimensional, as they tend to be funnelled into narrow pathways, often following coastlines or mountain ranges. The flocks are often long but relatively narrow, which increases the justification for using a one-dimensional model. We further assume that the routes taken on outward and return migrations are the same, and we defer to the final section for some discussions about how the model can be adapted for the case with different outward and return routes.

The success of a migration often depends on the availability of key food resources at certain stopover sites. Birds may stop at such sites for a few days before continuing. At such sites they may be vulnerable to predation or to parasites or pathogens, so we will include mortality at stopover sites, all forms of mortality being lumped together.

To formulate the model, we assume that migration occurs along a one-dimensional continuum (the migration route), which could be a curve. Let  $x$  denote the arc length along the continuum, and let  $x_1 = 0$  be the summer breeding site,  $x_n$  be the winter feeding location, and  $x_i$ ,  $i = 2, 3, \dots, n - 1$ , be the stopover locations where birds stop for short periods to feed.

Let  $l_i$  be the distance along the curved path (arc length) between the locations  $x_i$  and  $x_{i+1}$  and  $U_i$  be the mean flight velocity between these two locations, so that the time taken to fly between  $x_i$  and  $x_{i+1}$  will be

$$\tau_i = l_i/U_i.$$

We use  $\mu_i(t)$  (with a single subscript) to denote the per capita mortality at the location  $x_i$ , and we denote by  $\mu_{i,i+1}(t)$  the average per capita mortality in transit between the location  $x_i$  and the next location  $x_{i+1}$  on the outward migration. For the return migration, we have the mortality  $\mu_{i+1,i}(t)$  (not necessarily the same as  $\mu_{i,i+1}(t)$ ) for the journey between  $x_{i+1}$  and  $x_i$ . These in-flight mortalities account for the fact that even when in flight birds may be subject to predation (for example, by predatory birds), or they may die due to other causes, and the risks associated with the outward and return migrations may be different. Let  $d_{i,j}(t)$  account for migration into or out of each patch, so that those of the form  $d_{i,i+1}(t)$  are associated with outward migration and those of the form  $d_{i+1,i}(t)$  are associated with return migration.

Let  $S_i(t)$  be the number of birds at location  $x_i$ , and let  $b(S_1(t), t)$  be the birth rate function, which appears only in the  $S_1$  equation, since we assume births occur only at the breeding site  $x_1$ . Then, for the outward migration (the one that occurs after breeding), the model is

$$\begin{aligned} S'_1(t) &= b(S_1(t), t) - d_{1,2}(t)S_1(t) - \mu_1(t)S_1(t), \\ S'_2(t) &= \alpha_{1,2}(t)d_{1,2}(t - \tau_1)S_1(t - \tau_1) - d_{2,3}(t)S_2(t) - \mu_2(t)S_2(t), \\ &\vdots \\ S'_n(t) &= \alpha_{n-1,n}(t)d_{n-1,n}(t - \tau_{n-1})S_{n-1}(t - \tau_{n-1}) - \mu_n(t)S_n(t), \end{aligned} \tag{2.1}$$

where

$$\alpha_{i-1,i}(t) = \exp\left(-\frac{1}{U_{i-1}} \int_{x_{i-1}}^{x_i} \mu_{i-1,i}\left(t - \frac{x_i - u}{U_{i-1}}\right) du\right), \quad i = 2, \dots, n.$$

Similarly, for the return migration, from the winter feeding site  $x_n$  to the summer breeding site  $x_1$ , the model is

$$\begin{aligned} S'_1(t) &= b(S_1(t), t) + \alpha_{2,1}(t)d_{2,1}(t - \tau_1)S_2(t - \tau_1) - \mu_1(t)S_1(t), \\ &\vdots \\ S'_i(t) &= \alpha_{i+1,i}(t)d_{i+1,i}(t - \tau_i)S_{i+1}(t - \tau_i) - d_{i,i-1}(t)S_i(t) - \mu_i(t)S_i(t), \\ &\vdots \\ S'_n(t) &= -d_{n,n-1}(t)S_n(t) - \mu_n(t)S_n(t), \end{aligned} \tag{2.2}$$

with

$$\alpha_{i+1,i}(t) = \exp\left(-\frac{1}{U_i} \int_{x_i}^{x_{i+1}} \mu_{i+1,i}\left(t - \frac{u - x_i}{U_i}\right) du\right), \quad i = 1, \dots, n - 1.$$

The number of birds in the air is taken care of in this model by the time delay terms which model the time of flight between one location and the next. For example, in the outward migration (model (2.1)), birds migrate from location  $x_1$  (the breeding site) at a rate  $d_{1,2}(t)S_1(t)$ . The (curvilinear) flight distance to  $x_2$  is  $l_1$ , so this stage of the migration takes time  $l_1/U_1 = \tau_1$ , and therefore the rate of arrival of these birds at location  $x_2$  is  $d_{1,2}(t - \tau_1)S_1(t - \tau_1)$  after

correction for mortality during the flight. The per capita mortality for this sector of the migration is  $\mu_{1,2}(t)$ , and this leads to a survival probability for the sector of  $\alpha_{1,2}(t)$ , as we shall show.

These ideas are put onto a more rigorous mathematical footing as follows, but first we need to clarify a mathematically subtle point. Although  $x$  is a continuum, each stopover location  $x_i$  is to be regarded as a patch that can accommodate a finite number of individuals (it is helpful to think of each  $x_i$  not only as a point on the continuum  $x$  but also as a label for a small but finite area adjacent to the continuum at that particular point, perhaps like service stations adjacent to a freeway).

We now derive the expression shown for the first term in the right-hand side of the  $S_2$  equation in system (2.1); this derivation will also be needed later in counting the total number of birds, both within patches and in transits. The first term in the right-hand side of the  $S_2$  equation in system (2.1) is the flux into patch  $x_2$ . Now, along the route between  $x_1$  and  $x_2$  (we write  $x \in (x_1, x_2)$ , but we remind the reader that the route could be curved), the population of birds is described by a density function  $s(t, x)$  obeying the advection equation

$$\frac{\partial s(t, x)}{\partial t} = -U_1 \frac{\partial s(t, x)}{\partial x} - \mu_{1,2}(t)s(t, x),$$

and the flux at any point  $x \in (x_1, x_2)$  is  $U_1 s(t, x)$ . Now, the flux at  $x_1$ , which is the rate of leaving patch  $x_1$ , is  $d_{1,2}(t)S_1(t)$ . The flux at  $x_2$  (the rate of arriving into patch  $x_2$ ) is  $U_1 s(t, x_2)$ , which needs to be computed. If we define

$$s_\xi(x) = s(\xi + x/U_1, x),$$

then  $s_\xi(x)$  obeys

$$\frac{ds_\xi(x)}{dx} = -\frac{\mu_{1,2}(\xi + x/U_1)}{U_1} s_\xi(x).$$

Integrating from  $x_1$  to  $x_2$ , and remembering that all distances are curvilinear distances from some reference point on the flight path, so that  $l_1 = x_2 - x_1$ , we obtain

$$s_\xi(x_2) = s_\xi(x_1) \exp\left(-\frac{1}{U_1} \int_{x_1}^{x_2} \mu_{1,2}\left(\xi + \frac{u}{U_1}\right) du\right).$$

Setting  $\xi = t - x_2/U_1$  and remembering that  $l_1/U_1 = \tau_1$ , we have

$$s(t, x_2) = s(t - \tau_1, x_1) \exp\left(-\frac{1}{U_1} \int_{x_1}^{x_2} \mu_{1,2}\left(t - \frac{x_2 - u}{U_1}\right) du\right).$$

The flux into patch  $x_2$  is  $U_1 s(t, x_2)$  and is given by

$$\begin{aligned} U_1 s(t, x_2) &= U_1 s(t - \tau_1, x_1) \exp\left(-\frac{1}{U_1} \int_{x_1}^{x_2} \mu_{1,2}\left(t - \frac{x_2 - u}{U_1}\right) du\right) \\ &= (\text{flux at } x_1 \text{ at time } t - \tau_1) \exp\left(-\frac{1}{U_1} \int_{x_1}^{x_2} \mu_{1,2}\left(t - \frac{x_2 - u}{U_1}\right) du\right) \\ &= d_{1,2}(t - \tau_1) S_1(t - \tau_1) \exp\left(-\frac{1}{U_1} \int_{x_1}^{x_2} \mu_{1,2}\left(t - \frac{x_2 - u}{U_1}\right) du\right), \end{aligned}$$

which justifies the first term in the right-hand side of the  $S_2$  equation in (2.1).

The modeling of the outward and return migrations (systems (2.1) and (2.2)) can be combined into the following single system, valid at all times:

$$\begin{aligned}
 S'_1(t) &= b(S_1(t), t) + \alpha_{2,1}(t)d_{2,1}(t - \tau_1)S_2(t - \tau_1) \\
 &\quad - d_{1,2}(t)S_1(t) - \mu_1(t)S_1(t), \\
 &\quad \vdots \\
 (2.3) \quad S'_i(t) &= \alpha_{i-1,i}(t)d_{i-1,i}(t - \tau_{i-1})S_{i-1}(t - \tau_{i-1}) - d_{i,i+1}(t)S_i(t) \\
 &\quad + \alpha_{i+1,i}(t)d_{i+1,i}(t - \tau_i)S_{i+1}(t - \tau_i) - d_{i,i-1}(t)S_i(t) - \mu_i(t)S_i(t), \\
 &\quad \vdots \\
 S'_n(t) &= \alpha_{n-1,n}(t)d_{n-1,n}(t - \tau_{n-1})S_{n-1}(t - \tau_{n-1}) \\
 &\quad - d_{n,n-1}(t)S_n(t) - \mu_n(t)S_n(t).
 \end{aligned}$$

This combined system can be obtained by assuming the functions  $d_{i,i+1}(t)$  and  $d_{i+1,i}(t)$  to be zero at the time  $t$  when there is no migration from  $x_i$  to  $x_{i+1}$  or from  $x_{i+1}$  to  $x_i$ . More precisely, all of these functions are zero at nonmigratory times of year, those of the form  $d_{i,i+1}(t)$  model the outward migration and are therefore zero at all times of the year when there is no outward migration, and those of the form  $d_{i+1,i}(t)$  are zero except for the times when return migration takes place.

Unless otherwise stated, in the remainder of this paper we shall assume the following holds:

- (H1) All functions  $\mu_i(t)$ ,  $\mu_{i,i+1}(t)$ ,  $\mu_{i+1,i}(t)$ ,  $d_{i,i+1}(t)$ ,  $d_{i+1,i}(t)$ , and  $b(S_1, t)$  are nonnegative continuous functions of their arguments and are periodic with respect to the time variable  $t$  with the period  $T > 0$ . The functions  $\mu_i(t)$ ,  $\mu_{i,i+1}(t)$ ,  $\mu_{i+1,i}(t)$ ,  $d_{i,i+1}(t)$ , and  $d_{i+1,i}(t)$  are not identically zero.  $b(0, t) = 0$ ,  $b(S_1, t) \geq 0$  for all  $S_1 > 0$  and  $t \in \mathbb{R}$ , and  $b(S_1, t) \not\equiv 0$ .

System (2.3) can be written in the following form:

$$\begin{aligned}
 (2.4) \quad S'_i(t) &= f_i(t, S_1(t), \dots, S_n(t), S_1(t - \tau_1), S_2(t - \tau_2), S_2(t - \tau_1), \\
 &\quad S_3(t - \tau_3), S_3(t - \tau_2), \dots, S_{n-1}(t - \tau_{n-1}), S_{n-1}(t - \tau_{n-2}), \\
 &\quad S_n(t - \tau_{n-1})), \quad i = 1, 2, \dots, n,
 \end{aligned}$$

for  $t > 0$ . The initial data are

$$\begin{aligned}
 (2.5) \quad S_1(\theta) &= S_1^0(\theta) \geq 0, & \theta \in [-\tau_1, 0]; \\
 S_2(\theta) &= S_2^0(\theta) \geq 0, & \theta \in [-\max(\tau_1, \tau_2), 0]; \\
 S_3(\theta) &= S_3^0(\theta) \geq 0, & \theta \in [-\max(\tau_2, \tau_3), 0]; \\
 &\quad \vdots \\
 S_{n-1}(\theta) &= S_{n-1}^0(\theta) \geq 0, & \theta \in [-\max(\tau_{n-2}, \tau_{n-1}), 0]; \\
 S_n(\theta) &= S_n^0(\theta) \geq 0, & \theta \in [-\tau_{n-1}, 0].
 \end{aligned}$$

It should be noted that the variables  $S_2, S_3, \dots, S_{n-1}$  each appear as both undelayed and delayed variables, with precisely two delays involved for each of these variables. This is because

$i = 2, 3, \dots, n-1$  refer to stopover locations and birds may arrive at such locations from either side according to which migration is in progress; for example, the delayed occurrences of  $S_2$  are  $S_2(t - \tau_2)$  and  $S_2(t - \tau_1)$ . The first of these relates to outward migration from the site  $x_2$  on to  $x_3$ , which has journey time  $\tau_2$ , and the second relates to return migration from  $x_2$  to  $x_1$ , which has journey time  $\tau_1$ . The delayed occurrences of  $S_1$  and  $S_n$  each involve just one delay because these are the populations at the breeding and feeding locations  $x_1$  and  $x_n$ . Migration to or from these sites can be only to or from  $x_2$  and  $x_{n-1}$ , respectively.

For the study of system (2.3), with initial conditions (2.5), a natural choice for the state space is

$$(2.6) \quad Y = \prod_{i=1}^n C[I_i, \mathbb{R}],$$

with

$$(2.7) \quad \begin{aligned} C[I_1, \mathbb{R}] &= C([-\tau_1, 0], \mathbb{R}); \\ C[I_2, \mathbb{R}] &= C([-\max(\tau_1, \tau_2), 0], \mathbb{R}); \\ C[I_3, \mathbb{R}] &= C([-\max(\tau_2, \tau_3), 0], \mathbb{R}); \\ &\vdots \\ C[I_{n-1}, \mathbb{R}] &= C([-\max(\tau_{n-2}, \tau_{n-1}), 0], \mathbb{R}); \\ C[I_n, \mathbb{R}] &= C([-\tau_{n-1}, 0], \mathbb{R}), \end{aligned}$$

which is a Banach space when equipped with the norm

$$\|S\| = \max_{i=1, \dots, n} \left( \max_{s \in I_i} |S_i(s)| \right),$$

with the  $I_i$  defined in (2.7).

As we illustrate below, it is necessary to introduce the subspace

$$\begin{aligned} M := \{ \phi \in Y : \phi_i(0) &= 0 \text{ for } i = 1, \dots, n; \\ d_{i,i+1}(\theta_i)\phi_i(\theta_i) &= 0 \text{ for } i = 1, \dots, n-1, \theta_i \in [-\tau_i, 0]; \\ d_{i,i-1}(\theta_i)\phi_i(\theta_i) &= 0 \text{ for } i = 2, \dots, n, \theta_i \in [-\tau_{i-1}, 0] \}. \end{aligned}$$

This subspace, determined by the migration patterns, is a closed subspace of  $Y$ . It is basically the set of all initial conditions for which the solution of (2.3) remains identically zero for all  $t > 0$ .

We start with the following result on positivity.

**Proposition 2.1.** *For the system (2.3), with initial conditions (2.5), we have that  $S_i(t) \geq 0$  for all  $t > 0$  and for all  $i = 1, 2, \dots, n$ . There exists  $t^* > 0$  such that if  $(S_1^0, \dots, S_n^0) \notin M$ , then each  $S_i(t) > 0$  for all  $t \geq t^*$ .*

*Proof.* The nonnegativity of each  $S_i(t)$  follows immediately from Theorem 5.2.1 on page 81 of Smith [7]. Next note that, since the delayed terms in the right-hand side of system (2.3) all have nonnegative coefficients, a comparison theorem applies (for example, Theorem 5.1.1 on page 78 of [7]). Using these facts, it is easily seen that each variable remains strictly positive

if it ever becomes so. For example, in the case of  $S_1$ , it follows from  $S_1'(t) \geq -(d_{1,2}(t) + \mu_1(t))S_1(t)$ .

To complete the proof, it is therefore necessary to establish that there exists  $t^* > 0$  such that if  $(S_1^0, \dots, S_n^0) \notin M$ , then at least one component of  $S = (S_1, S_2, \dots, S_n)$  becomes strictly positive, and that once this happens all other components eventually become strictly positive. Suppose that  $(S_1^0, \dots, S_n^0) \notin M$ . We treat in detail the possibility that there exists  $\theta_1 \in [-\tau_1, 0]$  such that  $d_{1,2}(\theta_1)S_1^0(\theta_1) > 0$ . Let  $t_1 = \theta_1 + \tau_1$ . Either  $S_2(t_1) > 0$  or  $S_2(t_1) = 0$ . In the latter case, the  $i = 2$  equation of (2.3) gives

$$S_2'(t_1) \geq \alpha_{1,2}(t_1)d_{1,2}(\theta_1)S_1^0(\theta_1) > 0.$$

Thus  $S_2(t) > 0$  for all  $t > t_1$ . Since  $d_{2,3}(t)$  is periodic and not identically zero, there exists a subsequent time between  $t_1 + \tau_2$  and  $t_1 + \tau_2 + T$  at which  $d_{2,3}(t - \tau_2)S_2(t - \tau_2) > 0$ , and therefore  $S_3(t)$  becomes strictly positive and remains so for  $t \geq t_1 + \tau_2 + T$ . We eventually conclude the same for  $S_4, S_5, \dots, S_n$  for  $t \geq t_1 + 2T + \tau_2 + \tau_3, t \geq t_1 + 3T + \tau_2 + \tau_3 + \tau_4, \dots, t \geq t_1 + (n - 2)T + \tau_2 + \dots + \tau_{n-1}$ . In principle,  $S_1(t)$  could still be zero at this time, but  $S_1(t)$  will also eventually become strictly positive through the presence of the  $S_2$  term in the  $S_1$  equation when return migration is in progress (see the first equation of (2.2)) for  $t \geq nT + \sum_{i=1}^n \tau_i := t^*$ . Other cases can be dealt with in a similar fashion. ■

As the case considered in detail in the above proof shows, one way to ensure that all patches eventually become occupied is to have  $d_{1,2}(\theta)S_1^0(\theta) \neq 0$  (but not simply  $S_1^0(\theta) \neq 0$ ). This works by ensuring that some individuals are present at location  $x_1$  in the outward migration season. The condition of nonmembership of  $M$  is more general because it allows the possibility of initially introducing individuals at other patches.

Two solutions of system (2.3) corresponding to initial data  $\phi, \psi \in Y$  will remain identical to each other for all future times  $t \geq 0$  if  $\phi - \psi \in M$ . To see this, consider two solutions  $S = (S_1, S_2, \dots, S_n)$  and  $\tilde{S} = (\tilde{S}_1, \tilde{S}_2, \dots, \tilde{S}_n)$  of (2.3) starting, respectively, from initial data  $\phi, \psi \in Y$  such that  $\phi - \psi \in M$ . Then  $Z := S - \tilde{S}$  is initially in  $M$ . We claim that  $Z \equiv 0$  for all  $t > 0$ . Since all terms of system (2.3) are linear except for the  $b(S_1(t), t)$  term, it is easily seen that  $Z = (Z_1, Z_2, \dots, Z_n)$  satisfies a system exactly like (2.3) but with the  $b(S_1(t), t)$  term replaced by  $(\partial b(\zeta(t), t)/\partial S_1)Z_1(t)$ , where  $\zeta(t)$  is a function which arises through an application of the mean value theorem. From the structure of this system and the fact that  $Z$  starts in  $M$ , it is clear that indeed  $Z \equiv 0$  for all  $t > 0$  as claimed.

It is natural to consider the quotient space  $X = Y/M$  consisting of the equivalence classes

$$[\phi] = \{\phi + \psi; \psi \in M\} \quad \text{for any } \phi \in Y.$$

The importance of considering such a quotient space will become clear in the next section, when a certain notion of strong monotonicity of solutions is required. In particular, we have in Proposition 2.1 that  $S_i(t) \geq 0$  for all  $t \geq 0$  at  $i = 1, \dots, n$  as long as  $S^0 = (S_1^0, \dots, S_n^0)$  satisfies  $S_i^0(0) \geq 0$  for  $1 \leq i \leq n$ ;  $S_i^0(\theta_i) \geq 0$ , provided  $d_{i,i+1}(\theta_i) \neq 0$  for  $1 \leq i \leq n - 1$  and  $\theta_i \in [-\tau_i, 0]$ ; and  $S_i^0(\theta_i) \geq 0$  if  $d_{i-1,i}(\theta_i) \neq 0$  for  $2 \leq i \leq n$ ,  $\theta_i \in [-\tau_{i-1}, 0]$ . Furthermore,  $S_i(t) > 0$  for all  $t \geq nT + \sum_{i=1}^n \tau_i$  if  $S_0 \notin M$ .

The next result establishes the boundedness of solutions. We note that this result does not need the periodicity of the model coefficients.

**Proposition 2.2.** *In system (2.3), with initial conditions (2.5), suppose that  $b_{\text{sup}} < \infty$ , where  $b_{\text{sup}} = \sup_{S_1 \geq 0, t \geq 0} b(S_1, t)$ . Then, if  $S_{\text{tot}}(t)$  is the total number of birds,*

$$(2.8) \quad \limsup_{t \rightarrow \infty} S_{\text{tot}}(t) \leq b_{\text{sup}}/\mu,$$

where

$$(2.9) \quad \mu = \min_{t \in \mathbb{R}} (\mu_1(t), \dots, \mu_n(t), \mu_{1,2}(t), \dots, \mu_{n-1,n}(t), \mu_{2,1}(t), \dots, \mu_{n,n-1}(t)).$$

Hence also  $\limsup_{t \rightarrow \infty} S_i(t) \leq b_{\text{sup}}/\mu$  for each  $i = 1, 2, \dots, n$ .

*Proof.* The stated conditions are sufficient for the nonnegativity of each  $S_i(t)$ ,  $t > 0$ , which is needed for this proof. At times when the outward migration is in progress, the total number of birds  $S_{\text{tot}}(t)$  is given by

$$(2.10) \quad S_{\text{tot}}(t) = \sum_{i=1}^n S_i(t) + \sum_{i=1}^{n-1} \int_{x_i}^{x_{i+1}} s_i(t, x) dx,$$

where  $s_i(t, x)$ ,  $i = 1, 2, \dots, n-1$ , is the airborne density between  $x_i$  and  $x_{i+1}$ , which for the outward migration is determined by

$$\frac{\partial s_i(t, x)}{\partial t} = -U_i \frac{\partial s_i(t, x)}{\partial x} - \mu_{i,i+1}(t) s_i(t, x).$$

Note that

$$\begin{aligned} \frac{dS_{\text{tot}}(t)}{dt} &= \sum_{i=1}^n \frac{dS_i(t)}{dt} + \sum_{i=1}^{n-1} \int_{x_i}^{x_{i+1}} \left( -U_i \frac{\partial s_i(t, x)}{\partial x} - \mu_{i,i+1}(t) s_i(t, x) \right) dx \\ &= \sum_{i=1}^n \frac{dS_i(t)}{dt} - \sum_{i=1}^{n-1} \mu_{i,i+1}(t) \int_{x_i}^{x_{i+1}} s_i(t, x) dx \\ &\quad + \sum_{i=1}^{n-1} \{d_{i,i+1}(t) S_i(t) - \alpha_{i,i+1}(t) d_{i,i+1}(t - \tau_i) S_i(t - \tau_i)\} \\ &= b(S_1(t), t) - \sum_{i=1}^n \mu_i(t) S_i(t) - \sum_{i=1}^{n-1} \mu_{i,i+1}(t) \int_{x_i}^{x_{i+1}} s_i(t, x) dx \\ &\leq b(S_1(t), t) - \mu S_{\text{tot}}(t) \\ &\leq b_{\text{sup}} - \mu S_{\text{tot}}(t) \end{aligned}$$

using (2.1). While this analysis is valid only at times when the outward migration is in progress, similar ideas lead us to conclude that, in fact,

$$(2.11) \quad \frac{dS_{\text{tot}}(t)}{dt} \leq b_{\text{sup}} - \mu S_{\text{tot}}(t)$$

at all times, with  $\mu$  given by (2.9), and this leads to (2.8). Note that  $S_{\text{tot}}(t)$ , though always equal to the total number of birds, is given by expression (2.10) only when outward migration is in progress. ■



**3. Threshold dynamics.** Let  $X$  be a real Banach space, and let  $C \subset X$  be a *cone*, that is, a nonempty closed subset of  $X$  with the properties (i)  $\lambda C \subset C$  for any nonnegative  $\lambda$ , (ii)  $C + C \subset C$ , and (iii)  $C \cap (-C) = \{0\}$ . A *total cone* is a cone with the additional property that  $\overline{C - C} = X$ , where  $C - C = \{u - v : u, v \in C\}$ . A cone induces a partial ordering on a Banach space. We say that  $x \leq y$  if and only if  $y - x \in C$ . We define  $x < y$  to mean that  $x \leq y$  and  $x \neq y$ , and we say that  $x \ll y$  if and only if  $y - x \in \text{int } C$ , the interior of  $C$ .

An operator  $G : X \rightarrow X$  is said to be *positive* if  $G(C) \subset C$  (i.e.,  $Gu \geq 0$  when  $u \geq 0$ ) and *strongly positive* if  $G(C \setminus \{0\}) \subset \text{int } C$  (i.e.,  $Gu \gg 0$  when  $u > 0$ ).

The following version of the Krein–Rutman theorem combines the relevant parts of the two versions to be found on pages 226 and 228 of Deimling [3].

**Theorem 3.1 (Krein–Rutman theorem).** *Let  $X$  be a Banach space,  $C \subset X$  be a total cone, and  $G : X \rightarrow X$  be a compact linear operator that is positive. Suppose that the spectral radius  $\rho(G)$  of  $G$  satisfies  $\rho(G) > 0$ . Then  $\rho(G)$  is an eigenvalue of  $G$  with an eigenvector  $u \in C \setminus \{0\}$  (i.e.,  $u > 0$ ). Moreover, if  $G$  is strongly positive, then  $\rho(G)$  is a simple eigenvalue,  $u \in \text{int } C$  (i.e.,  $u \gg 0$ ), and there is no other eigenvalue with a positive eigenvector.*

To state and prove our main result, we recall that a natural phase space for system (2.3) is the Banach space  $Y$ . However, the consideration of a solution to eventually become positive for any nontrivial initial data leads to the introduction of the closed subspace  $M$ , which yields the quotient space  $X = Y/M$ . It is natural to introduce the cone  $C \subset X$  as the set of the equivalence classes  $[\phi]$  so that  $\phi \in Y$  and

$$\begin{aligned} \phi_i(0) &\geq 0 \quad \text{for } 1 \leq i \leq n; \\ \phi_i(\theta_i) &\geq 0 \quad \text{if } d_{i,i+1}(\theta_i) \neq 0 \quad \text{for } 1 \leq i \leq n - 1, \theta_i \in [-\tau_i, 0]; \\ \phi_i(\theta_i) &\geq 0 \quad \text{if } d_{i,i-1}(\theta_i) \neq 0 \quad \text{for } 2 \leq i \leq n, \theta_i \in [-\tau_{i-1}, 0]. \end{aligned}$$

As noted earlier, the solution starting from  $\psi \in [\phi]$  coincides with the solution starting from  $\phi$ , so we can just talk about the solution starting from a given initial equivalence class. In particular, corresponding to a given initial datum  $S^0 = (S_1^0, S_2^0, \dots, S_n^0)$  satisfying (2.5), there is one and only one solution of (2.3)  $S = (S_1, S_2, \dots, S_n)$  that is defined and nonnegative for all future times  $t \geq 0$ . Furthermore, this is also the unique solution of (2.3) through any initial value  $\tilde{S}^0 \in [S^0]$ . Therefore, we can define the map  $S_t : X \rightarrow X$  by  $S_t([S^0]) = [S_t]$ , where  $S_t \in Y$  is given by  $(S_t)_i(\theta_i) = S_i(t + \theta_i)$  for  $\theta_i \in I_i$ ,  $1 \leq i \leq n$ . In particular, we define the operator  $F : X \rightarrow X$  by  $F([S^0]) = [S_T]$ . In what follows, we will work on a representation of this operator, so we will write

$$F(S^0) = S_T,$$

so that  $S_T$  is the element of  $X$  whose  $i$ th component is the function with values  $S_i(T + \theta)$ ,  $\theta \in I_i$ , and  $S(t) = (S_1(t), S_2(t), \dots, S_n(t))$  is the solution of (2.3) corresponding to the initial datum  $S^0 = (S_1^0, S_2^0, \dots, S_n^0)$ . Thus  $F(S^0)$  is essentially the state of the solution of (2.3) at time  $t = T$  corresponding to the use of  $S^0$  as the initial datum. A fixed point of  $F$  corresponds to a periodic solution of (2.3) of period  $T$ .

We can now state the main threshold dynamics result, as long as the birth function  $b(S_1, t)$  is subhomogeneous in  $S_1$ .

**Theorem 3.2.** *In system (2.3), suppose (H1) holds,  $b_{\text{sup}} < \infty$ , and  $\lambda b(S_1, t) < b(\lambda S_1, t)$  when  $\lambda \in (0, 1)$  and  $S_1 > 0$ . Then either of the following holds:*

- (i) every solution of (2.3), subject to (2.5), tends to zero as  $t \rightarrow \infty$ , or
- (ii) (2.3) has a  $T$ -periodic solution which is strictly positive (componentwise) at all times, and this solution attracts all solutions with initial data which satisfy (2.5) and are not in the subspace  $M$ ;
- (iii) conclusion (i) (resp., (ii)) holds if the spectral radius of  $DF(0)$  is strictly less (resp., larger) than 1, where  $F$  is the aforementioned operator which maps the initial datum to the state at time  $T$ .

*Proof.* The proof will be via the use of Theorem 2.3.4 on page 48 of Zhao [11].

Recall that  $C$  is the positive cone of  $X$  and has a nonempty interior. Clearly  $F : C \rightarrow C$ ; this follows from the nonnegativity of solutions (Proposition 2.1). Note also that  $F(0) = 0$  because the solution of (2.3) corresponding to zero initial data is the zero solution. Next we shall show that  $F$  is *strictly subhomogeneous*, i.e., that  $F(\lambda S) > \lambda F(S)$  for any  $S \in C$  with  $S \gg 0$  and  $\lambda \in (0, 1)$ . Now,  $S \gg 0$  means that  $S \in \text{int } C$  and therefore that

$$(3.1) \quad \inf_{i=1, \dots, n} \left\{ \inf_{s \in J_i} S_i(s) \right\} > 0,$$

where

$$\begin{aligned} J_1 &= \{s = 0, \text{ or } s \in [-\tau_1, 0] \text{ and } d_{1,2}(s) \neq 0\}; \\ J_i &= \{s = 0, \text{ or } s \in [-\tau_i, 0] \text{ and } d_{i,i+1}(s) \neq 0; \text{ or } s \in [-\tau_{i-1}, 0], d_{i,i-1}(s) \neq 0\}, \\ &\quad 2 \leq i \leq n-1; \\ J_n &= \{s = 0, \text{ or } s \in [-\tau_{n-1}, 0] \text{ and } d_{n,n-1}(s) \neq 0\}. \end{aligned}$$

Verifying  $F(\lambda S) > \lambda F(S)$  necessitates verifying that, for initial data satisfying (3.1), the solution  $S(t; \lambda)$  of

$$(3.2) \quad \begin{aligned} S'_i(t; \lambda) &= f_i(t, S_1(t; \lambda), \dots, S_n(t; \lambda), S_1(t - \tau_1; \lambda), S_2(t - \tau_2; \lambda), S_2(t - \tau_1; \lambda), \\ &\quad S_3(t - \tau_3; \lambda), S_3(t - \tau_2; \lambda), \dots, S_{n-1}(t - \tau_{n-1}; \lambda), S_{n-1}(t - \tau_{n-2}; \lambda), \\ &\quad S_n(t - \tau_{n-1}; \lambda)), \quad i = 1, 2, \dots, n, \\ S_i(s; \lambda) &= \lambda S_i^0(s), \quad s \in I_i, \quad i = 1, 2, \dots, n, \end{aligned}$$

with the  $f_i$  defined by (2.3), satisfies

$$(3.3) \quad \begin{aligned} S_i(T + \theta; \lambda) &\geq \lambda S_i(T + \theta) \quad \text{for all } \theta \in I_i \text{ and each } i \\ &\quad \text{and} \\ \exists i \text{ such that } S_i(T + \theta; \lambda) &\neq \lambda S_i(T + \theta), \quad \theta \in J_i, \end{aligned}$$

where  $S(t)$  satisfies

$$(3.4) \quad \begin{aligned} S'_i(t) &= f_i(t, S_1(t), \dots, S_n(t), S_1(t - \tau_1), S_2(t - \tau_2), S_2(t - \tau_1), \\ &\quad S_3(t - \tau_3), S_3(t - \tau_2), \dots, S_{n-1}(t - \tau_{n-1}), S_{n-1}(t - \tau_{n-2}), \\ &\quad S_n(t - \tau_{n-1})), \quad i = 1, 2, \dots, n, \\ S_i(s) &= S_i^0(s), \quad s \in I_i, \quad i = 1, 2, \dots, n. \end{aligned}$$

We will multiply (3.4) by  $\lambda$  and subtract the result from (3.2), and then we will introduce  $w(t) = S(t; \lambda) - \lambda S(t)$ . This gives  $w_i(s) \equiv 0$  for  $s \in I_i$  and, for  $t > 0$  and  $i = 1$ ,

$$\begin{aligned}
 (3.5) \quad w'_1(t) &= b(S_1(t; \lambda), t) - \lambda b(S_1(t), t) + \alpha_{2,1}(t)d_{2,1}(t - \tau_1)w_2(t - \tau_1) \\
 &\quad - d_{1,2}(t)w_1(t) - \mu_1(t)w_1(t) \\
 &\geq b(S_1(t; \lambda), t) - b(\lambda S_1(t), t) + \alpha_{2,1}(t)d_{2,1}(t - \tau_1)w_2(t - \tau_1) \\
 &\quad - d_{1,2}(t)w_1(t) - \mu_1(t)w_1(t) \\
 &= \left( \int_0^1 \partial b(\lambda S_1(t) + \xi w_1(t), t) / \partial S_1 d\xi \right) w_1(t) - d_{1,2}(t)w_1(t) - \mu_1(t)w_1(t) \\
 &\quad + \alpha_{2,1}(t)d_{2,1}(t - \tau_1)w_2(t - \tau_1).
 \end{aligned}$$

For  $t > 0$  and  $i \geq 2$ , we find that  $w_i(t)$  satisfies an equation having exactly the same structure as the  $i$ th equation of (2.3), with  $w_i$  in place of  $S_i$ , since the  $i$ th equation of (2.3) is linear when  $i \geq 2$ .

Since the delay terms all have nonnegative coefficients, a comparison theorem is applicable to the system of differential equations (inequality in the case of  $w_1$ ) for  $w_1, \dots, w_n$  and it follows from Theorem 5.2.1 on page 81 of Smith [7] that  $w_i(t) \geq 0$  for  $t \geq 0$  and all  $i$  and therefore in particular that the first statement of (3.3) holds.

We will verify the second statement of (3.3) by showing that, in fact, it holds for  $i = 1$ . Suppose, for a contradiction, that  $S_1(T + \theta; \lambda) \equiv \lambda S_1(T + \theta)$  for all  $\theta \in [-\tau_1, 0]$ . Then it would follow that  $w_1(t) \equiv 0$  on  $[T - \tau_1, T]$  and, from (3.5), that

$$\underbrace{b(\lambda S_1(t), t) - \lambda b(S_1(t), t)}_{\geq 0} + \underbrace{\alpha_{2,1}(t)}_{> 0} \underbrace{d_{2,1}(t - l_1/U_1)w_2(t - l_1/U_1)}_{\geq 0} = 0$$

for all  $t \in [T - \tau_1, T]$ . But then  $b(\lambda S_1(t), t) \equiv \lambda b(S_1(t), t)$  on this interval, which in turn implies that  $S_1(t) \equiv 0$  on  $[T - \tau_1, T]$ . But this is impossible because in the verification of strict subhomogeneity we need only consider initial data  $S \gg 0$ . For such initial data,  $S_1(0) > 0$ , which implies that  $S_1(t) > 0$  for all  $t > 0$ , giving a contradiction. We have, therefore, shown that  $F$  is strictly subhomogeneous.

Next we shall prove that  $F^N$  is *strongly monotone* for some suitably large integer  $N$ . To do so involves showing that  $F^N$  is monotone and, additionally, that  $F^N([\mathcal{S}^0]) \ll F^N([\mathcal{T}^0])$  whenever  $[\mathcal{S}^0] < [\mathcal{T}^0]$ . Let  $\mathcal{S}(t)$  and  $\mathcal{T}(t)$  be the solutions of (2.3) satisfying the initial data  $\mathcal{S} = \mathcal{S}^0 \in X$ ,  $\mathcal{T} = \mathcal{T}^0 \in X$ , with  $\mathcal{S}^0$  and  $\mathcal{T}^0$  such that  $[\mathcal{S}^0] \leq [\mathcal{T}^0]$ . Let  $\mathcal{Y} = \mathcal{T} - \mathcal{S}$ .

For  $t > 0$ , the differential equations satisfied by the components  $\mathcal{Y}_i$  of  $\mathcal{Y}$  are of course obtained from (2.3). For  $i = 2, 3, \dots, n$ ,  $\mathcal{Y}_i$  satisfies the  $i$ th equation of (2.3), with  $\mathcal{Y}_i$  in place of  $S_i$ . For  $i = 1$ , we have from an argument similar to that of (3.5) that

$$\begin{aligned}
 (3.6) \quad \mathcal{Y}'_1(t) &= \left( \int_0^1 \partial b(S_1(t) + \xi \mathcal{Y}_1(t), t) / \partial S_1 d\xi \right) \mathcal{Y}_1(t) - d_{1,2}(t)\mathcal{Y}_1(t) \\
 &\quad + \alpha_{2,1}(t)d_{2,1}(t - \tau_1)\mathcal{Y}_2(t - \tau_1) - \mu_1(t)\mathcal{Y}_1(t).
 \end{aligned}$$

As  $[\mathcal{S}^0] \leq [\mathcal{T}^0]$ , we have  $\mathcal{Y}_i^0(0) \geq 0$  for  $1 \leq i \leq n$ ;  $\mathcal{Y}_i^0(\theta_i) \geq 0$  for  $1 \leq i \leq n - 1$  and  $\theta_i \in [-\tau_i, 0]$ ; and  $\mathcal{Y}_i^0(\theta_i) \geq 0$  if  $d_{i-1,i}(\theta_i) \neq 0$  for  $2 \leq i \leq n$  and  $\theta_i \in [-\tau_{i-1}, 0]$ . Therefore, using the

same argument as for Proposition 2.1 (see the paragraphs preceding Proposition 2.2), we have  $\mathcal{Y}_i(t) \geq 0$  for all  $t \geq 0$ . This shows the monotonicity of  $F^N$ . To establish the strong monotonicity, we assume  $[\mathcal{S}^0] < [\mathcal{T}^0]$ . Then  $\mathcal{Y}^0 = \mathcal{S}^0 - \mathcal{T}^0 \notin M$ . Hence,  $\mathcal{Y}_i(t) > 0$  for all  $t \geq nT + \sum_{i=1}^n \tau_i$ . This implies  $\min_{\theta_i \in I_i} \mathcal{Y}_i(NT + \theta_i) > 0$ , and hence  $F^N([\mathcal{S}^0]) \ll F^N([\mathcal{T}^0])$  for the minimal integer  $N$  such that  $NT \geq nT + \sum_{i=1}^n \tau_i + \max_{1 \leq i \leq n} \tau_i$ .

Thus,  $G := F^N$  is the operator that we work with at this stage. However, a fixed point of  $F^N$  assures us only of the existence of a periodic solution of (2.3) of period  $NT$  rather than  $T$ , but this issue will be dealt with later. Let us confirm that  $F^2$  is strictly subhomogeneous (that the same is true for  $F^N$  can be shown similarly). It is necessary to show that  $F^2(\lambda S) > \lambda F^2(S)$  when  $S \gg 0$  and  $\lambda \in (0, 1)$ . Now,  $F(\lambda S) > \lambda F(S)$ . The above arguments on monotonicity confirm that  $F$  itself is monotone, though not necessarily strongly so. Therefore,  $F^2(\lambda S) \geq F(\lambda F(S))$ . It is easily shown that  $F(S) \gg 0$  when  $S \gg 0$ . Therefore, by strict subhomogeneity of  $F$ ,  $F(\lambda F(S)) > \lambda F(F(S))$ . Hence  $F^2(\lambda S) > \lambda F^2(S)$ .

It is also necessary to verify a hypothesis on the Fréchet derivative  $DF(0)$  (or  $DF^N(0)$  if necessary), namely, that it must be compact and strongly positive. This derivative is the linear operator which maps  $S^0$  to  $S_T$  (or  $S_{NT}$  in the case of  $F^N$ ) as determined by the linearization of (2.3) at its zero solution. To show strong positivity, it is necessary to show that  $S_T$  (or  $S_{NT}$ ) is in  $\text{int } C$  whenever  $S^0 > 0$ . This has effectively been done already because it amounts to the study of a linear system like the system of equations satisfied by the  $\mathcal{Y}_i$ , the  $i = 1$  equation resembling (3.6) but with  $\partial b(0, t)/\partial S_1$  in place of  $\int_0^1 \partial b(S_1(t) + \xi \mathcal{Y}_1(t), t)/\partial S_1 d\xi$ . The issues are the same, and strong positivity can be shown for  $DF^N(0)$ , with the same  $N$  as that required for strong monotonicity.

We may now apply Theorem 2.3.4 in [11] to the operator  $F^N$  at this stage. Letting  $\rho(DF^N(0))$  denote the spectral radius of  $DF^N(0)$ , we conclude that if  $\rho(DF^N(0)) \leq 1$ , then every positive orbit of  $F^N$  in  $C$  converges to 0, and if  $\rho(DF^N(0)) > 1$ , then there exists a unique fixed point  $S^* \gg 0$  of  $F^N$  in  $C$  such that every positive orbit of  $F^N$  in  $C \setminus \{0\}$  converges to  $S^*$ . A fixed point of  $F^N$  corresponds to a periodic solution of (2.3) of period  $NT$ . The statements of the theorem follow if we can show that the solution we have found in the case  $\rho(DF^N(0)) > 1$  has period  $T$  as well as  $NT$ . Note that  $\rho(DF^N(0)) = \rho((DF(0))^N) = (\rho(DF(0)))^N$ , so  $\rho(DF(0)) > 1$ . Moreover,  $DF(0)$  is a positive operator, though not necessarily a strongly positive one. Letting  $\rho_* = \rho(DF(0))$ , we find from Theorem 3.1 that there exists a function  $S_{\text{ev}} > 0$  such that  $DF(0)S_{\text{ev}} = \rho_* S_{\text{ev}}$ . Next we claim that, in fact,  $S_{\text{ev}} \gg 0$ . This follows from the fact that  $S_{\text{ev}}$  will also satisfy  $DF^N(0)S_{\text{ev}} = \rho_*^N S_{\text{ev}}$  and therefore is a positive eigenvector of  $DF^N(0)$  corresponding to  $\rho_*^N$ . But  $DF^N(0)$  is a *strongly* positive operator, so the second part of Theorem 3.1 now applies, with its statement about uniqueness, and informs us that  $S_{\text{ev}} \gg 0$ .

From Taylor's theorem in Banach spaces,

$$F(S) = F(0) + \int_0^1 DF(\xi S) d\xi S.$$

In our case, and as applied to  $\delta S_{\text{ev}}$ , where  $\delta > 0$  is a small number, this gives

$$F(\delta S_{\text{ev}}) = \int_0^1 DF(\xi \delta S_{\text{ev}}) d\xi \delta S_{\text{ev}}.$$

Therefore,

$$\begin{aligned} F(\delta S_{ev}) - \delta S_{ev} &= \int_0^1 DF(\xi \delta S_{ev}) d\xi \delta S_{ev} - \delta S_{ev} \\ &= \left( \int_0^1 DF(\xi \delta S_{ev}) d\xi - DF(0) \right) \delta S_{ev} + DF(0) \delta S_{ev} - \delta S_{ev} \\ &= \left( \int_0^1 DF(\xi \delta S_{ev}) d\xi - DF(0) \right) \delta S_{ev} + (\rho_* - 1) \delta S_{ev} \end{aligned}$$

so that

$$\frac{1}{\delta} (F(\delta S_{ev}) - \delta S_{ev}) = \left( \int_0^1 DF(\xi \delta S_{ev}) d\xi - DF(0) \right) S_{ev} + (\rho_* - 1) S_{ev}.$$

Since  $\rho_* > 1$ , the right-hand side of the above expression is in  $\text{int } C$  when  $\delta = 0$ , and therefore remains in  $\text{int } C$  when  $\delta > 0$  is sufficiently small, by continuity. Therefore, for sufficiently small  $\delta > 0$ ,  $F(\delta S_{ev}) \gg \delta S_{ev}$ .

We now define a sequence  $S^{(k)} \in X$  by  $S^{(0)} = \delta S_{ev}$  and  $S^{(k+1)} = F(S^{(k)})$ ,  $k = 0, 1, 2, \dots$ . We have already established that  $S^{(1)} > S^{(0)}$ , and we claim that  $S^{(k+1)} \geq S^{(k)}$  for each integer  $k \geq 1$ . If this is true for a particular  $k$ , then it is also true for the next  $k$ , since  $S^{(k+2)} = F(S^{(k+1)}) \geq F(S^{(k)}) = S^{(k+1)}$  (using that  $F$  is monotone), so our claim follows by induction. The monotonicity and boundedness of  $\{S^{(k)}\}_{k=1}^\infty$  in  $X$  implies the monotonicity and boundedness of  $\{S_i^{(k)}(\theta)\}_{k=1}^\infty$  in  $\mathbb{R}$ , for each fixed  $\theta \in I_i$  and each fixed  $i = 1, 2, \dots, n$ , so that there exists a function  $S^{**} \in X$  with  $S_i^{(k)}(\theta) \rightarrow S_i^{**}(\theta)$  as  $k \rightarrow \infty$ , with  $\theta \in I_i$  and  $i = 1, 2, \dots, n$ . Note that  $S^{**}$  is a fixed point of  $F$  and therefore has period  $T$ . Moreover, the  $T$ -periodic solution  $S^{**}$  is not the trivial solution, since the above monotone iteration starts with  $\delta S_{ev} \gg 0$ . It remains to show that  $S^{**} = S^*$ , but this is obviously so because any subsequence of  $\{S^{(k)}\}$  must also converge to  $S^{**}$ , and so in particular this is true of the subsequence consisting of every  $N$ th term. This subsequence is precisely the iterates of  $F^N$ , which converge to  $S^*$ . Thus  $S^{**} = S^*$ . ■

**4. Threshold parameter estimation.** It remains to calculate the spectral radius of  $DF(0)$ . Calculating this radius in a closed form involving the model parameters seems to be a challenging task, so we turn to a qualitatively equivalent issue when this radius is less than or larger than 1. In this section, we consider the case where  $n = 3$ , so the linearization of model (2.3) at the zero solution takes the form

$$\begin{aligned} (4.1) \quad S'_1(t) &= b(t)S_1(t) + \alpha_{2,1}(t)d_{2,1}(t - \tau_1)S_2(t - \tau_1) - d_{1,2}(t)S_1(t) - \mu_1(t)S_1(t), \\ S'_2(t) &= \alpha_{1,2}(t)d_{1,2}(t - \tau_1)S_1(t - \tau_1) - d_{2,3}(t)S_2(t) \\ &\quad + \alpha_{3,2}(t)d_{3,2}(t - \tau_2)S_3(t - \tau_2) - d_{2,1}(t)S_2(t) - \mu_2(t)S_2(t), \\ S'_3(t) &= \alpha_{2,3}(t)d_{2,3}(t - \tau_2)S_2(t - \tau_2) - d_{3,2}(t)S_3(t) - \mu_3(t)S_3(t), \end{aligned}$$

with

$$b(t) = \frac{\partial}{\partial S} b(S, t)|_{S=0}.$$

The Floquet multiplier theory and the Krein–Rutman theory combined imply that if  $\exp\{\lambda T\}$  is the spectral radius of  $DF(0)$ , then there exist positive  $T$ -periodic functions  $p_i(t)$ ,  $i = 1, 2, 3$ , such that  $S = (S_1(t), S_2(t), S_3(t))$ , with  $S_i(t) = \exp\{\lambda t\}p_i(t)$ , solves (4.1). Therefore, we get

$$\begin{aligned}
 p_1'(t) &= -\lambda p_1(t) + b(t)p_1(t) + \alpha_{2,1}(t)d_{2,1}^\lambda(t - \tau_1)p_2(t - \tau_1) \\
 &\quad - d_{1,2}(t)p_1(t) - \mu_1(t)p_1(t), \\
 p_2'(t) &= -\lambda p_2(t) + \alpha_{1,2}(t)d_{1,2}^\lambda(t - \tau_1)p_1(t - \tau_1) - d_{2,3}(t)p_2(t) \\
 &\quad + \alpha_{3,2}(t)d_{3,2}^\lambda(t - \tau_2)p_3(t - \tau_2) - d_{2,1}(t)p_2(t) - \mu_2(t)p_2(t), \\
 p_3'(t) &= -\lambda p_3(t) + \alpha_{2,3}(t)d_{2,3}^\lambda(t - \tau_2)p_2(t - \tau_2) \\
 &\quad - d_{3,2}(t)p_3(t) - \mu_3(t)p_3(t),
 \end{aligned}
 \tag{4.2}$$

with

$$\begin{aligned}
 d_{1,2}^\lambda(t) &= \exp\{-\lambda\tau_1\}d_{1,2}(t), & d_{2,1}^\lambda(t) &= \exp\{-\lambda\tau_1\}d_{2,1}(t), \\
 d_{3,2}^\lambda(t) &= \exp\{-\lambda\tau_2\}d_{3,2}(t), & d_{2,3}^\lambda(t) &= \exp\{-\lambda\tau_2\}d_{2,3}(t).
 \end{aligned}$$

Let

$$X_1(t, s) = \exp\left\{\int_s^t [b(z) - \mu_1(z) - d_{1,2}(z)] dz\right\};
 \tag{4.3}$$

$$X_2(t, s) = \exp\left\{\int_s^t [-\mu_2(z) - d_{2,3}(z) - d_{2,1}(z)] dz\right\};
 \tag{4.4}$$

$$X_3(t, s) = \exp\left\{\int_s^t [-\mu_3(z) - d_{3,2}(z)] dz\right\},
 \tag{4.5}$$

and let

$$X_i^\lambda(t, s) = e^{-\lambda(t-s)}X_i(t, s), \quad i = 1, 2, 3,$$

for all  $t, s \in \mathbb{R}$ . Then we have

$$X_i(t + T, s + T) = X_i(t, s).
 \tag{4.6}$$

Solving the first and third equations of (4.2), we obtain

$$p_1(t) = X_1^\lambda(t, 0)p_1(0) + \int_0^t X_1^\lambda(t, z_1)\alpha_{2,1}(z_1)d_{2,1}^\lambda(z_1 - \tau_1)p_2(z_1 - \tau_1) dz_1$$

and

$$p_3(t) = X_3^\lambda(t, 0)p_3(0) + \int_0^t X_3^\lambda(t, z_3)\alpha_{2,3}(z_3)d_{2,3}^\lambda(z_3 - \tau_2)p_2(z_3 - \tau_2) dz_3.$$

Solving the second equation of (4.2) gives

$$\begin{aligned}
 p_2(t) &= X_2^\lambda(t, 0)p_2(0) + \int_0^t X_2^\lambda(t, z_2)\alpha_{1,2}(z_2)d_{1,2}^\lambda(z_2 - \tau_1)p_1(z_2 - \tau_1) dz_2 \\
 &\quad + \int_0^t X_2^\lambda(t, z_2)\alpha_{3,2}(z_2)d_{3,2}^\lambda(z_2 - \tau_2)p_3(z_2 - \tau_2) dz_2.
 \end{aligned}$$

Consequently, we obtain an integral equation for  $p_2(t)$ :

$$\begin{aligned}
 (4.7) \quad p_2(t) &= X_2^\lambda(t, 0)p_2(0) \\
 &+ \int_0^t X_2^\lambda(t, z_2)\alpha_{1,2}(z_2)d_{1,2}^\lambda(z_2 - \tau_1)X_1^\lambda(z_2 - \tau_1, 0) dz_2 p_1(0) \\
 &+ \int_0^t X_2^\lambda(t, z_2)\alpha_{3,2}(z_2)d_{3,2}^\lambda(z_2 - \tau_2)X_3^\lambda(z_2 - \tau_2, 0) dz_2 p_3(0) \\
 &+ \int_0^t X_2^\lambda(t, z_2)\alpha_{1,2}(z_2) \int_0^{z_2-\tau_1} X_1^\lambda(z_2 - \tau_1, z_1) \\
 &\quad \times d_{1,2}^\lambda(z_2 - \tau_1)\alpha_{2,1}(z_1)d_{2,1}^\lambda(z_1 - \tau_1)p_2(z_1 - \tau_1) dz_1 dz_2 \\
 &+ \int_0^t X_2^\lambda(t, z_2)\alpha_{3,2}(z_2) \int_0^{z_2-\tau_2} X_3^\lambda(z_2 - \tau_2, z_3) \\
 &\quad \times d_{3,2}^\lambda(z_2 - \tau_2)\alpha_{2,3}(z_3)d_{2,3}^\lambda(z_3 - \tau_2)p_2(z_3 - \tau_2) dz_3 dz_2.
 \end{aligned}$$

Equation (4.7) enables us to formally define a function  $Q(t)$ , which turns out to be useful for estimating the spectral radius of  $DF(0)$ . Here we treat only the case when  $n = 3$ , but the general strategy of obtaining an integral equation for one of the  $p_i(t)$ , and deriving a function  $Q(t)$  from it, should be applicable for other  $n$  as well. For  $n = 3$ , a function  $Q(t)$  associated with (4.7) is defined to be the right-hand side of (4.7) with (i) the first three terms deleted, (ii) the lower limits on all integrals replaced by  $-\infty$ , (iii) all  $\lambda$  superscripts removed, and (iv) the terms  $p_2(z_1 - \tau_1)$  and  $p_2(z_3 - \tau_2)$  removed. This results in the function  $Q(t)$  defined below.

**Theorem 4.1.** *Let  $n = 3$ , and let*

$$\begin{aligned}
 Q(t) &:= \int_{-\infty}^t X_2(t, z_2)\alpha_{1,2}(z_2) \int_{-\infty}^{z_2-\tau_1} X_1(z_2 - \tau_1, z_1)d_{1,2}(z_2 - \tau_1)\alpha_{2,1}(z_1)d_{2,1}(z_1 - \tau_1) dz_1 dz_2 \\
 &+ \int_{-\infty}^t X_2(t, z_2)\alpha_{3,2}(z_2) \int_{-\infty}^{z_2-\tau_2} X_3(z_2 - \tau_2, z_3)d_{3,2}(z_2 - \tau_2)\alpha_{2,3}(z_3)d_{2,3}(z_3 - \tau_2) dz_3 dz_2,
 \end{aligned}$$

where the  $X_i(t, s)$  are defined in (4.3), (4.4), and (4.5). Then we have the following:

- (i) If  $\int_0^T b(t) dt > \int_0^T [\mu_1(t) + d_{1,2}(t)] dt$ , then the spectral radius of  $DF(0)$  strictly exceeds 1.
- (ii) If  $\int_0^T b(t) dt < \int_0^T [\mu_1(t) + d_{1,2}(t)] dt$ , then  $Q(t)$  is a well-defined continuous nonnegative  $T$ -periodic function. In this case, the spectral radius of  $DF(0)$  is strictly larger (resp., less) than 1 if  $\min_{t \in [0, T]} Q(t) > 1$  (resp.,  $\max_{t \in [0, T]} Q(t) < 1$ ).

*Proof.* (i) comes easily from a standard comparison argument, since

$$S'_1(t) \geq [b(t) - d_{1,2}(t) - \mu_1(t)]S_1(t).$$

To prove (ii), we first note that if  $\int_0^T b(t) dt < \int_0^T [\mu_1(t) + d_{1,2}(t)] dt$ , then  $Q(t)$  is a well-defined continuous nonnegative  $T$ -periodic function. We first prove by contradiction that if  $\max_{t \in [0, T]} Q(t) < 1$ , then the spectral radius  $\exp(\lambda T)$  of  $DF(0)$  is less than 1. Suppose that this is false; then  $\lambda > 0$ . Therefore, using  $t + kT$  instead of  $t$  for any positive integer  $k$  in (4.7), we get

$$\begin{aligned}
(4.8) \quad p_2(t+kT) &= X_2^\lambda(t+kT, 0)p_2(0) \\
&+ \int_0^{t+kT} X_2^\lambda(t+kT, z_2)\alpha_{1,2}(z_2)d_{1,2}^\lambda(z_2-\tau_1)X_1^\lambda(z_2-\tau_1, 0) dz_2 p_1(0) \\
&+ \int_0^{t+kT} X_2^\lambda(t+kT, z_2)\alpha_{3,2}(z_2)d_{3,2}^\lambda(z_2-\tau_2)X_3^\lambda(z_2-\tau_2, 0) dz_2 p_3(0) \\
&+ \int_0^{t+kT} X_2^\lambda(t+kT, z_2)\alpha_{1,2}(z_2) \int_0^{z_2-\tau_1} X_1^\lambda(z_2-\tau_1, z_1) \\
&\quad \times d_{1,2}^\lambda(z_2-\tau_1)\alpha_{2,1}(z_1)d_{2,1}^\lambda(z_1-\tau_1)p_2(z_1-\tau_1) dz_1 dz_2 \\
&+ \int_0^{t+kT} X_2^\lambda(t+kT, z_2)\alpha_{3,2}(z_2) \int_0^{z_2-\tau_2} X_3^\lambda(z_2-\tau_2, z_3) \\
&\quad \times d_{3,2}^\lambda(z_2-\tau_2)\alpha_{2,3}(z_3)d_{2,3}^\lambda(z_3-\tau_2)p_2(z_3-\tau_2) dz_3 dz_2.
\end{aligned}$$

Using changes of variables and the periodicity of  $p_2(t)$ ,  $\alpha_{i-1,i}(t)$ ,  $\alpha_{i+1,i}(t)$ ,  $d_{ij}(t)$ , and  $d_{ij}^\lambda(t)$ , we get

$$\begin{aligned}
p_2(t) &= X_2^\lambda(t+kT, 0)p_2(0) \\
&+ \int_{-kT}^t X_2^\lambda(kT+t, kT+z_2)\alpha_{1,2}(z_2)d_{1,2}^\lambda(z_2-\tau_1)X_1^\lambda(kT+z_2-\tau_1, 0) dz_2 p_1(0) \\
&+ \int_{-kT}^t X_2^\lambda(kT+t, kT+z_2)\alpha_{3,2}(z_2)d_{3,2}^\lambda(z_2-\tau_2)X_3^\lambda(kT+z_2-\tau_2, 0) dz_2 p_3(0) \\
&+ \int_{-kT}^t X_2^\lambda(kT+t, kT+z_2)\alpha_{1,2}(z_2) \int_0^{kT+z_2-\tau_1} X_1^\lambda(kT+z_2-\tau_1, z_1) \\
&\quad \times d_{1,2}^\lambda(z_2-\tau_1)\alpha_{2,1}(z_1)d_{2,1}^\lambda(z_1-\tau_1)p_2(z_1-\tau_1) dz_1 dz_2 \\
&+ \int_{-kT}^t X_2^\lambda(kT+t, kT+z_2)\alpha_{3,2}(z_2) \int_0^{kT+z_2-\tau_2} X_3^\lambda(kT+z_2-\tau_2, z_3) \\
&\quad \times d_{3,2}^\lambda(z_2-\tau_2)\alpha_{2,3}(z_3)d_{2,3}^\lambda(z_3-\tau_2)p_2(z_3-\tau_2) dz_3 dz_2
\end{aligned}$$

so that

$$\begin{aligned}
(4.9) \quad p_2(t) &= X_2^\lambda(t+kT, 0)p_2(0) \\
&+ \int_{-kT}^t X_2^\lambda(kT+t, kT+z_2)\alpha_{1,2}(z_2)d_{1,2}^\lambda(z_2-\tau_1)X_1^\lambda(kT+z_2-\tau_1, 0) dz_2 p_1(0) \\
&+ \int_{-kT}^t X_2^\lambda(kT+t, kT+z_2)\alpha_{3,2}(z_2)d_{3,2}^\lambda(z_2-\tau_2)X_3^\lambda(kT+z_2-\tau_2, 0) dz_2 p_3(0) \\
&+ \int_{-kT}^t X_2^\lambda(kT+t, kT+z_2)\alpha_{1,2}(z_2) \int_{-kT}^{z_2-\tau_1} X_1^\lambda(kT+z_2-\tau_1, kT+z_1) \\
&\quad \times d_{1,2}^\lambda(z_2-\tau_1)\alpha_{2,1}(z_1)d_{2,1}^\lambda(z_1-\tau_1)p_2(z_1-\tau_1) dz_1 dz_2 \\
&+ \int_{-kT}^t X_2^\lambda(kT+t, kT+z_2)\alpha_{3,2}(z_2) \int_{-kT}^{z_2-\tau_2} X_3^\lambda(kT+z_2-\tau_2, kT+z_3) \\
&\quad \times d_{3,2}^\lambda(z_2-\tau_2)\alpha_{2,3}(z_3)d_{2,3}^\lambda(z_3-\tau_2)p_2(z_3-\tau_2) dz_3 dz_2.
\end{aligned}$$



Next we will show that for each fixed  $t$  the first three terms in the above expression all tend to zero as  $k \rightarrow \infty$ . We concentrate on the second term; the others can be treated similarly. The second term, if constants are omitted, is

$$\int_{-kT}^t X_2^\lambda(kT + t, kT + z_2) \alpha_{1,2}(z_2) d_{1,2}^\lambda(z_2 - \tau_1) X_1^\lambda(kT + z_2 - \tau_1, 0) dz_2,$$

which, using the definitions of  $X_i^\lambda(t, s)$  and  $d_{i,j}^\lambda(t)$  and the periodicity (4.6), equals

$$e^{-\lambda\tau_1} \int_{-kT}^t e^{-\lambda(t-z_2)} X_2(t, z_2) \alpha_{1,2}(z_2) d_{1,2}(z_2 - \tau_1) e^{-\lambda(kT+z_2-\tau_1)} X_1(kT + z_2 - \tau_1, 0) dz_2,$$

which, after obvious simplification, can be bounded by

$$(4.10) \quad G_k(t) := e^{-\lambda t} e^{-\lambda kT} \max_{t \in [0, T]} \alpha_{1,2}(t) \max_{t \in [0, T]} d_{1,2}(t) \int_{-kT}^t X_1(kT + z_2 - \tau_1, 0) dz_2,$$

where we have used  $X_2(t, z_2) \leq 1$ , since  $z_2 \leq t$ . Now

$$(4.11) \quad \int_{mT}^{(m+1)T} b(t) dt < \int_{mT}^{(m+1)T} [\mu_1(t) + d_{1,2}(t)] dt$$

for each integer  $m$  by hypothesis and using the periodicity of the integrands. Also note that  $z_2 \in [-kT, t]$ . Therefore,

$$\begin{aligned} X_1(kT + z_2 - \tau_1, 0) &= \exp \left\{ \int_0^{kT+z_2-\tau_1} [b(z) - \mu_1(z) - d_{1,2}(z)] dz \right\} \\ &= \exp \left\{ \int_0^{kT+z_2} - \int_{kT+z_2-\tau_1}^{kT+z_2} [b(z) - \mu_1(z) - d_{1,2}(z)] dz \right\}. \end{aligned}$$

Now

$$\exp \left\{ - \int_{kT+z_2-\tau_1}^{kT+z_2} [b(z) - \mu_1(z) - d_{1,2}(z)] dz \right\} \leq \exp \left( \tau_1 \max_{z \in [0, T]} |b(z) - \mu_1(z) - d_{1,2}(z)| \right).$$

Also, if we let  $M$  (depending on  $k$  and  $z_2$ ) denote the integer such that

$$MT \leq kT + z_2 < (M + 1)T,$$

then

$$\begin{aligned} &\exp \left\{ \int_0^{kT+z_2} [b(z) - \mu_1(z) - d_{1,2}(z)] dz \right\} \\ &= \exp \left\{ \int_0^{MT} + \int_{MT}^{kT+z_2} [b(z) - \mu_1(z) - d_{1,2}(z)] dz \right\} \\ &\leq \exp \left\{ \int_{MT}^{kT+z_2} [b(z) - \mu_1(z) - d_{1,2}(z)] dz \right\} \\ &\leq \exp \left( T \max_{z \in [0, T]} |b(z) - \mu_1(z) - d_{1,2}(z)| \right) \end{aligned}$$

using (4.11) and periodicity. It follows that

$$X_1(kT + z_2 - \tau_1, 0) \leq \exp \left( (T + \tau_1) \max_{z \in [0, T]} |b(z) - \mu_1(z) - d_{1,2}(z)| \right)$$

so that  $X_1(kT + z_2 - \tau_1, 0)$  is bounded independently of  $k$  and  $z_2$ . We need to show that  $G_k(t) \rightarrow 0$  as  $k \rightarrow \infty$  for each fixed  $t$ , where  $G_k(t)$  is defined by (4.10). But, in light of the above analysis, we now see that

$$0 \leq G_k(t) \leq (\text{constant}) e^{-\lambda t} (t + kT) e^{-\lambda kT} \max_{t \in [0, T]} \alpha_{1,2}(t) \max_{t \in [0, T]} d_{1,2}(t).$$

Hence  $G_k(t) \rightarrow 0$  as  $k \rightarrow \infty$ , since  $\lambda > 0$ .

Letting  $k \rightarrow \infty$  in (4.9) and knowing that the first three terms go to zero, we obtain

$$\begin{aligned} p_2(t) &\leq \int_{-\infty}^t X_2(t, z_2) \alpha_{1,2}(z_2) \int_{-\infty}^{z_2 - \tau_1} X_1(z_2 - \tau_1, z_1) \\ &\quad \times d_{1,2}(z_2 - \tau_1) \alpha_{2,1}(z_1) d_{2,1}(z_1 - \tau_1) p_2(z_1 - \tau_1) dz_1 dz_2 \\ &+ \int_{-\infty}^t X_2(t, z_2) \alpha_{3,2}(z_2) \int_{-\infty}^{z_2 - \tau_2} X_3(z_2 - \tau_2, z_3) \\ &\quad \times d_{3,2}(z_2 - \tau_2) \alpha_{2,3}(z_3) d_{2,3}(z_3 - \tau_2) p_2(z_3 - \tau_2) dz_3 dz_2. \end{aligned}$$

Therefore,

$$\begin{aligned} p_2(t) &\leq \int_{-\infty}^t X_2(t, z_2) \alpha_{1,2}(z_2) \int_{-\infty}^{z_2 - \tau_1} X_1(z_2 - \tau_1, z_1) \\ &\quad \times d_{1,2}(z_2 - \tau_1) \alpha_{2,1}(z_1) d_{2,1}(z_1 - \tau_1) dz_1 dz_2 \max_{s \in [0, T]} p_2(s) \\ &+ \int_{-\infty}^t X_2(t, z_2) \alpha_{3,2}(z_2) \int_{-\infty}^{z_2 - \tau_2} X_3(z_2 - \tau_2, z_3) \\ &\quad \times d_{3,2}(z_2 - \tau_2) \alpha_{2,3}(z_3) d_{2,3}(z_3 - \tau_2) dz_3 dz_2 \max_{s \in [0, T]} p_2(s) \end{aligned}$$

so that, for all  $t$ ,

$$p_2(t) \leq Q(t) \max_{s \in [0, T]} p_2(s),$$

and therefore there exists a  $t$  with  $Q(t) \geq 1$ , which contradicts  $\max_{t \in [0, T]} Q(t) < 1$ .

Similarly, we get a contradiction if  $\int_0^T b(t) dt < \int_0^T [\mu_1(t) + d_{1,2}(t)] dt$  and if  $\min_{t \in [0, T]} Q(t) > 1$  by considering  $\min_{t \in [0, T]} p_2(t)$ , which is a positive constant, since  $p_2$  is strictly positive. This completes the proof.

Calculating  $Q(t)$  is still a highly nontrivial task. However, in the simplest case, where all periodic coefficients are constants and the birth function  $b(S_1, t)$  becomes  $b(S_1)$ , we obtain a necessary and sufficient condition for the extinction or survival of the bird species. Namely, in the case  $b < \mu_1 + d_{1,2}$ , where  $b = \partial b(S) / \partial S|_{S=0}$ , we have

$$Q = \left[ \frac{\alpha_{1,2} \alpha_{2,1} d_{1,2} d_{2,1}}{\mu_1 + d_{1,2} - b} + \frac{\alpha_{3,2} \alpha_{2,3} d_{3,2} d_{2,3}}{\mu_3 + d_{3,2}} \right] \frac{1}{\mu_2 + d_{2,3} + d_{2,1}}.$$

Therefore, the bird species does not become extinct if and only if

$$(4.12) \quad \frac{\alpha_{1,2}\alpha_{2,1}d_{1,2}d_{2,1}}{\mu_1 + d_{1,2} - b} + \frac{\alpha_{3,2}\alpha_{2,3}d_{3,2}d_{2,3}}{\mu_3 + d_{3,2}} > \mu_2 + d_{2,3} + d_{2,1}.$$

This inequality can be rewritten in the form

$$(4.13) \quad b + \alpha_{1,2}d_{1,2} \frac{d_{2,1}}{\mu_2 + d_{2,1} + d_{2,3}(1 - \alpha_{2,3}\alpha_{3,2}d_{3,2}/(\mu_3 + d_{3,2}))} \alpha_{2,1} > \mu_1 + d_{1,2}.$$

The implication of this is that, for the bird species to survive, the birth rate in the breeding patch  $x_1$  plus the rate of return to patch  $x_1$  of birds which left it the previous summer and survived a full year cycle of migration must be larger than the total of the death rate  $\mu_1$  at  $x_1$  and the migration rate  $d_{1,2}$  from patch  $x_1$  to the stopover patch  $x_2$ . In (4.13), the ratio with a numerator of  $d_{2,1}$  is the rate of departure from  $x_2$  back to  $x_1$  of those birds which made it to  $x_2$  on their outward migration and have since been at  $x_3$  during the winter. The terms in the denominator of that fraction account for the natural death at  $x_2$ , the migration rate from  $x_2$  to  $x_1$ , and what we could call the *effective* migration rate from  $x_2$  to  $x_3$ . A portion of the birds which left the stopover patch  $x_2$  in the fall migration (with rate  $d_{2,3}$ ) will not make it back to  $x_2$  in the spring, because they will die at  $x_3$  or in transit. The quantity  $1 - \alpha_{2,3}\alpha_{3,2}d_{3,2}/(\mu_3 + d_{3,2})$  is the fraction that do make the journey from  $x_2$  back to  $x_2$ .

**5. Simulations and discussions.** Migratory birds typically breed in the summer in the northern part of their migratory route and initiate their southward migration route in the fall until reaching their warmer wintering grounds, where they feed during the winter. They initiate a northward migration, returning to their breeding location in the spring. The spring and fall migration routes, which in reality are not necessarily the same, each involve a number of stopovers. The case when  $n = 3$  captures the essential feature of this migration pattern so that, in addition to the summer breeding site  $x_1$  and the wintering location  $x_3$ , we lump together all stopovers as a single site denoted by  $x_2$ . If  $n = 3$  and all periodic coefficients are constants, inequality (4.12) provides the condition for survival of the birds and encapsulates the role of all parameters, including, via  $\alpha_{1,2}$ ,  $\alpha_{2,1}$ ,  $\alpha_{2,3}$ , and  $\alpha_{3,2}$ , the in-flight mortalities, distances, and mean flight velocities. Note that if  $\mu_1 > b$ , then (4.12) is automatically violated, since its left-hand side is less than  $d_{2,1} + d_{2,3}$  (recall that the  $\alpha$  parameters are all bounded by 1), so extinction is the outcome in this case. This is not surprising, since births occur only in the breeding patch at  $x_1$ . Survival is therefore possible only if  $\mu_1 < b$  and (4.12) holds. Even in this case, note that (4.12) is violated if  $d_{2,3}$  is sufficiently large, since the coefficient of  $d_{2,3}$  in the left-hand side is less than 1. This requires more interpretation and discussion but can be understood as follows. The right-hand side of (4.12) is the per capita rate of departure from the stopover patch at  $x_2$ , whether by migration or death. The second term in the left-hand side is the per capita rate of arrival back at  $x_2$  of birds returning from the wintering location  $x_3$ . These birds were at  $x_2$  previously, but some will have died at  $x_3$  or during the flight. The term is therefore  $d_{2,3}$  multiplied by the probabilities of surviving the flight from  $x_2$  to  $x_3$ , of not dying at  $x_3$ , and of surviving the flight from  $x_3$  back to  $x_2$ . These probabilities are  $\alpha_{2,3}$ ,  $d_{3,2}/(\mu_3 + d_{3,2})$ , and  $\alpha_{3,2}$ , respectively. The prediction of extinction for sufficiently large  $d_{2,3}$ , all other things being equal, would seem to suggest that it is better for

a bird at the stopover location  $x_2$  on its outward migration to simply retrace its steps and go directly back to  $x_1$ , rather than continue to  $x_3$ , at which location there is a possibility of death but not of producing offspring. Here we remind the reader that (4.12) relates only to the autonomous (nonperiodic) version of the model when  $n = 3$ . It is only in the autonomous case, and not for realistically chosen periodic parameters, that a bird could fly from  $x_1$  to  $x_2$  and then straight back to  $x_1$ . In nature, each bird would attempt to complete the full migration circuit. These observations highlight the importance of the fact that migration is a periodic phenomenon and that therefore the migration rates should not be constants but realistically chosen periodic functions. Each should be zero at certain times of the year, and such that a bird at  $x_2$  can fly on to  $x_3$  only in the outward migration season, and back to  $x_1$  only in the return season, and not given the choice, as the autonomous model implies. Condition (4.12) is, however, sharp if migration is temporally homogeneous.

We carried out some numerical simulations to illustrate the threshold dynamics by using some data from the U.S. Geological Survey [8], which tracked three of a dozen bar-headed geese using satellites. Bar-headed geese can fly up to 50,000 km from northern Mongolia to India during their migration cycle. The flocks follow various routes, but their major stopover locations seem to be common, and both the spring and fall migrations involve between five and six stopovers for the tracked bar-headed geese traveling from Mongolia to India. In our simulations, we use a single patch to denote the collection of these stopovers. The birth function was chosen as  $b(S_1, t) = rS_1(1 - S_1/K)$ . Solutions always remain below  $K$ . The other parameter values were taken from Bourouiba and Wu [2], Javed et al. [5], and Prins and van Wieren [6]. We divide each year into the periods  $(0, T_1)$ ,  $(T_1, T_2)$ ,  $(T_2, T_3)$ , and  $(T_3, 365)$ , with time measured in days, and define May 1 to be the beginning of each year. The breeding season is from time  $t = 0$  to  $t = T_1 = 138$ . The outward migration (fall migration) is from time  $T_1$  to  $T_2$ , where  $T_2 - T_1 = 61$  days. From time  $T_2$  to  $T_3$ , birds stay at a winter feeding patch. From time  $t = T_3$  to  $t = 365$ , inward migration (spring migration) is in progress. The parameters associated with the birth function were taken as  $r = 0.005$  and  $K = 60,000$ . The mortality rates in the first (summer breeding) patch, the second (stopover) patch, and the third (winter feeding) patch were taken as  $\mu_1 = 0.00088$ ,  $\mu_2 = 0.00088$ , and  $\mu_3 = 0.001$ . We chose the migration rates for outward migration to be  $d_{i,i+1}(t) = 0.3$ ,  $i = 1, 2$ , when  $t \bmod 365 \in (T_1, T_2)$  and zero at other times. For return migration,  $d_{i+1,i}(t) = 0.3$ ,  $i = 1, 2$ , when  $t \bmod 365 \in (T_3, 365)$  and is zero at other times. The values of the in-flight mortalities  $\mu_{i-1,i}$  and  $\mu_{i+1,i}$  were 0.002. For the flight times  $\tau_i = l_i/U_i$ , we chose  $\tau_i = 5$  for each  $i$ . These values enter the model through the  $\alpha$  parameters  $\alpha_{12} = \alpha_{23} = \alpha_{32} = \alpha_{21} = 0.99$ .

Figure 1 shows a periodic solution of a period of one year, reflecting the one-year periodicity of the migration rates. In the plots, only birds occupying patches are counted, but even the total bird population, including those in the air, may oscillate, as there is no single equation governing the total number of birds. In another simulation, the result of which is shown in Figure 2, the death rate on the summer breeding patch has been increased tenfold with other parameters remaining the same. The result is that the bird population goes to extinction. Other simulations suggest that it is necessary only to increase this death parameter between fourfold and fivefold to realize extinction rather than a positive periodic solution, but extinction occurs very slowly unless the parameter is increased considerably more.

In this paper, we have concentrated solely on the issue of the mathematical modeling of

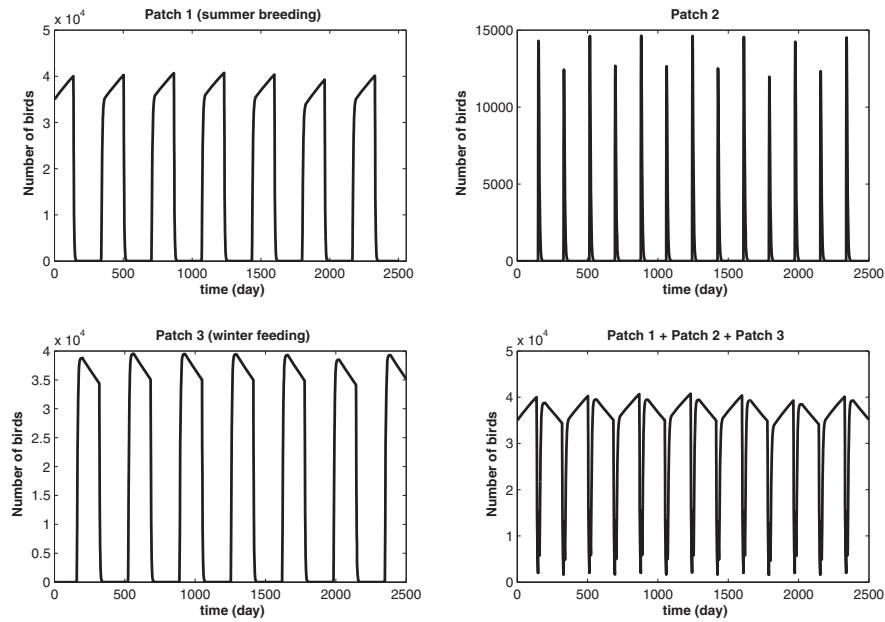


Figure 1. A stable and globally attractive positive periodic solution of a period of one year, reflecting the one-year periodicity of migration and birth rates.

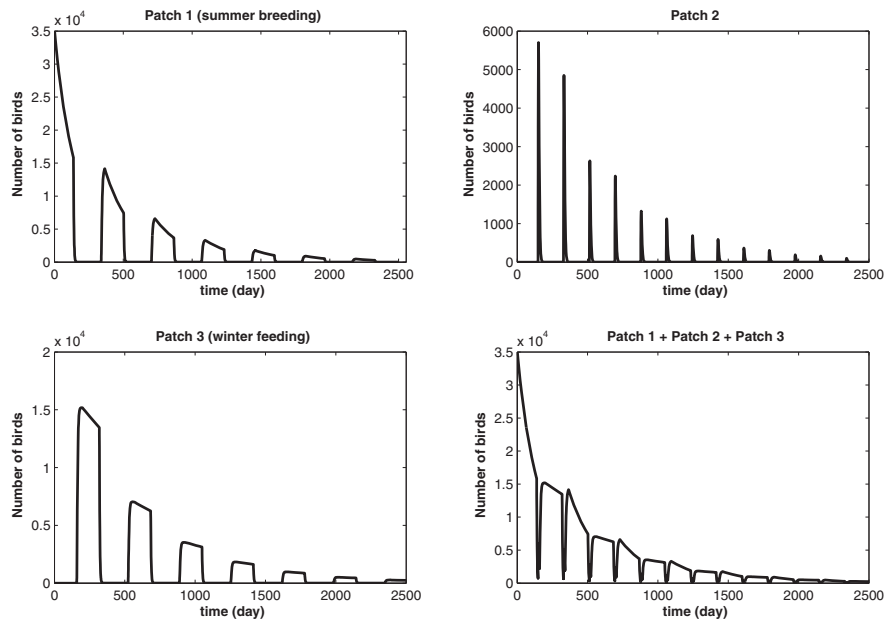


Figure 2. Increasing the death rate tenfold on the first patch (summer breeding) and keeping the other parameters the same as in Figure 1. The bird population dies out regardless of the initial conditions.

the bird migration phenomenon and in particular on how to correctly deal with the flying times between stopovers and the issue of in-flight mortality. Our longer term goal is to understand the possible role of migratory birds in the spread of H5N1 between continents. In further papers presently in preparation, we are further developing our modeling methodology to include the interaction of migratory birds with nonmigratory species and especially with poultry. Some migratory bird species follow different routes for outward and return journeys and therefore incur different local conditions, such as density of poultry farms and different local control strategies for H5N1 control, and we think it is especially important to compare the impact of the outward and return journeys on disease transmission.

**Acknowledgment.** We are grateful to the referees for their constructive and helpful comments.

#### REFERENCES

- [1] H. BLOKPOEL AND W. J. RICHARDSON, *Weather and spring migration of snow geese across southern Manitoba*, *Oikos*, 30 (1978), pp. 350–363.
- [2] L. BOUROUBA AND J. WU, *Spatial Dynamics of Seasonal Bird Migration in Context of H5N1*, preprint.
- [3] K. DEIMLING, *Nonlinear Functional Analysis*, Springer-Verlag, Berlin, 1985.
- [4] B. S. EBBINGE AND B. SPAANS, *The importance of body reserves accumulated in spring staging areas in the temperate zone for breeding in dark-bellied brent geese Branta b. bernicla in the high Arctic*, *J. Avian Biol.*, 26 (1995), pp. 105–113.
- [5] S. JAVED, J. Y. TAKEKAWA, D. C. DOUGLAS, A. R. RAHMANI, Y. KANAI, M. NAGENDRAN, B. C. CHOUDHURY, AND S. SHARMA, *Tracking the spring migration of a barheaded goose (Anser indicus) across the Himalaya with satellite telemetry*, *Global Environ. Res.*, 4 (2000), pp. 195–205.
- [6] H. H. T. PRINS AND S. E. VAN WIEREN, *Number, population structure and habitat use of bar-headed geese Anser indicus in Ladakh (India) during the brood-rearing period*, *Acta Zoolog. Sin.*, 50 (2004), pp. 738–744.
- [7] H. L. SMITH, *Monotone Dynamical Systems. An Introduction to the Theory of Competitive and Cooperative Systems*, Math. Surveys Monogr. 41, AMS, Providence, RI, 1995.
- [8] U. S. GEOLOGICAL SURVEY, *Bar-Headed Goose 2008 Migration Map*, Department of the Interior, Western Ecological Research Center, Sacramento, CA, 2009.
- [9] T. P. WEBER AND N. I. STILIANAKIS, *Ecologic immunology of avian influenza (H5N1) in migratory birds*, *Emerg. Infect. Dis.*, 13 (2007), pp. 1139–1143.
- [10] WORLD HEALTH ORGANIZATION, *Cumulative Number of Confirmed Human Cases of Avian Influenza A/(H5N1) Reported to WHO*, [http://www.who.int/csr/disease/avian\\_influenza/country/cases\\_table\\_2008\\_09\\_10/en/index.html](http://www.who.int/csr/disease/avian_influenza/country/cases_table_2008_09_10/en/index.html) (2008).
- [11] X.-Q. ZHAO, *Dynamical Systems in Population Biology*, CMS Books Math./Ouvrages Math. SMC 16, Springer-Verlag, New York, 2003.