

REPORT ON B&H MINE DUMP SAMPLES, SOUTH PASS DISTRICT, WYOMING

by

W. Dan Hausel
1983

Several grab samples of scorodite-stained quartz vein were collected from the B&H Mine (Figure 1). These samples were sent to the assayer as a composite sample and assayed for precious metals. Sample no. SPBH-1-83 ran 0.16 ounces per ton silver with no detectable gold (Figure 2).

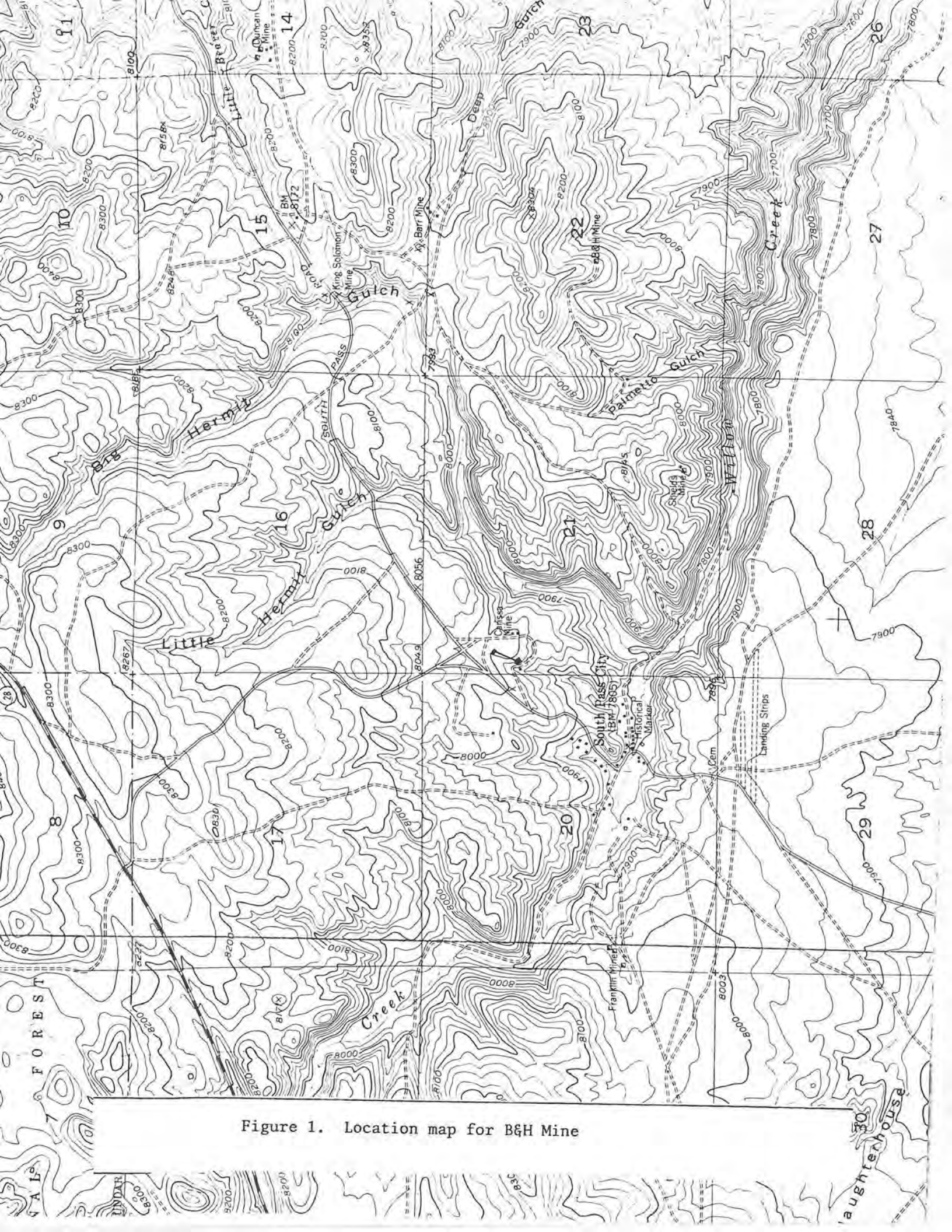


Figure 1. Location map for B&H Mine



WYOMING ANALYTICAL LABORATORIES, INC.

Box 934 • 605 South Adams

(307) 742-7995

LARAMIE, WYOMING 82070

Dan Hausel
Wyoming Geological Survey
Box 3008, University Station
Laramie, WY 82071

Request No.: 1866
Date: December 14, 1983

REPORT OF ANALYSIS

Lab No.	Customer ID		Gold	Silver
A2151	#SP 3-83 10/28/83	oz/ton	<0.01	0.04
A2152	#SP 5-83 10/28/83	oz/ton	<0.01	0.03
A2153	#SPBH-1-83 B & H Mine 10/28/83	oz/ton	<0.01	0.16
A2154	#SPCS-2-83 Curie Shields 10/28/83	oz/ton	<0.01	<0.01
A2155	#SPDB-4-83 Doc Barr 10/28/83	oz/ton	<0.01	<0.01
A2156	#SPDM-6-83 Diana Mine 10/28/83	oz/ton	<0.01	<0.01

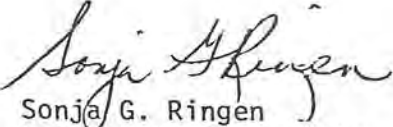

Sonja G. Ringen
Laboratory Supervisor

Figure 2. Assay report on sample #SPBH-1-83