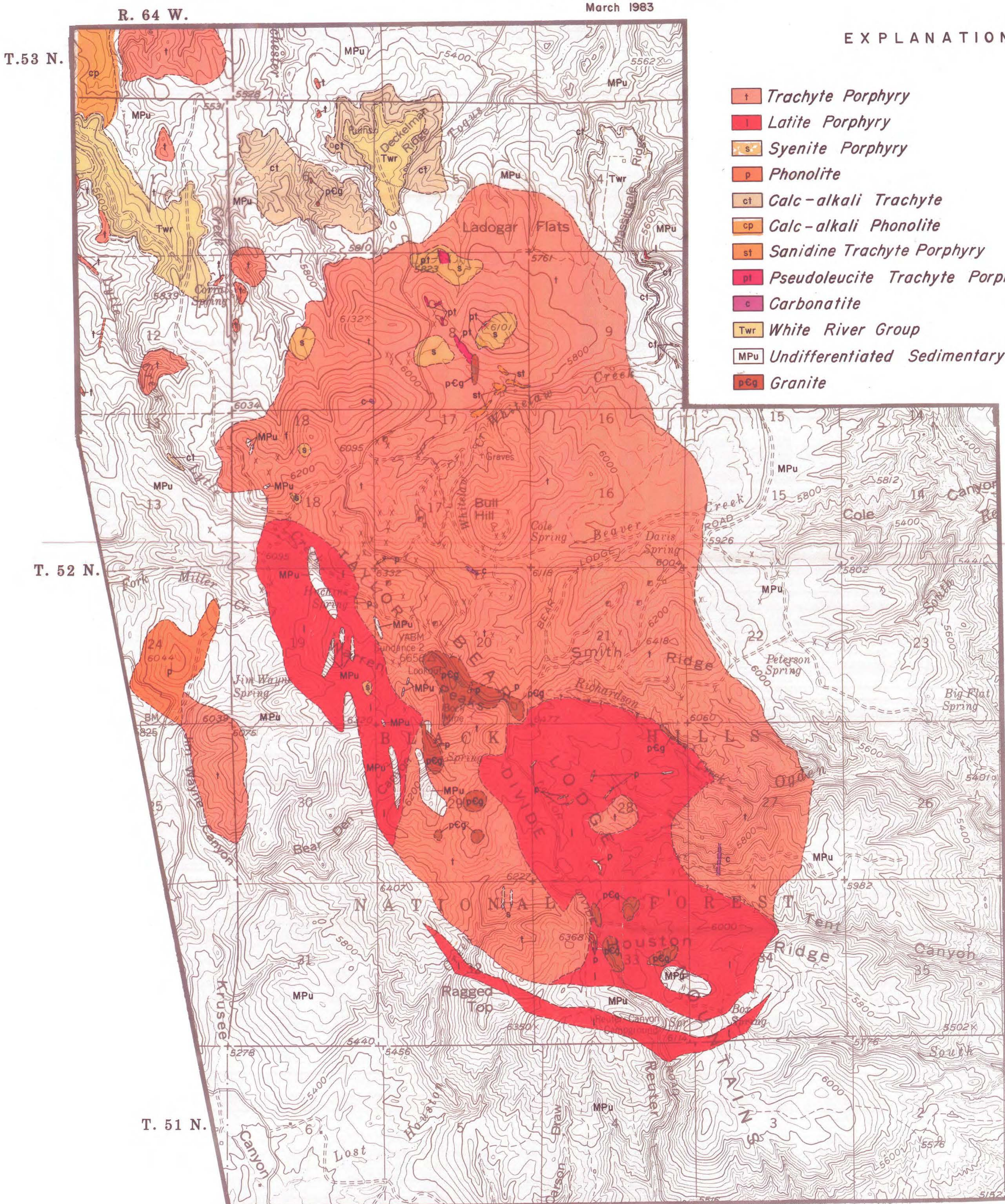


**BEDROCK GEOLOGIC MAP OF THE ALKALINE COMPLEX
OF THE BEAR LODGE MOUNTAINS, CROOK COUNTY, WYOMING**

compiled by Ray E. Harris

March 1983



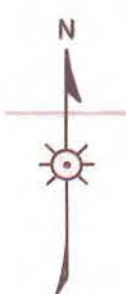
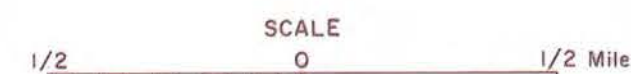
EXPLANATION

- Trachyte Porphyry*
- Latite Porphyry*
- Syenite Porphyry*
- Phonolite*
- Calc-alkali Trachyte*
- Calc-alkali Phonolite*
- Sanidine Trachyte Porphyry*
- Pseudoleucite Trachyte Porphyry*
- Carbonatite*
- White River Group*
- Undifferentiated Sedimentary Rocks*
- Granite*

TERTIARY
IGNEOUS
ROCKS

TERTIARY
MESOZOIC &
PALEOZOIC

PRECAMBRIAN



SOURCES:

- Harris, R.E., 1982, unpublished mapping, Wyoming Geological Survey
- Jenner, Gordon, 1982, Personal Communication
- Morgan, A.M., 1936, *Geologic Map of Crook County, Wyoming*, Wyoming Geological Survey County Map Series I:253,440
- O'Toole, F.S., 1981, *Petrology of the Cenozoic phonolites and related rocks of the Houston Creek Area, Bear Lodge Mountains, Wyoming* unpublished M.S. thesis, University of North Dakota
- White, S.F., 1976, *Petrology of the Cenozoic igneous rocks of the Lytle Creek Area, Bear Lodge Mountains, Wyoming*, unpublished M.S. thesis, University of North Dakota
- Wilkinson, M., 1982, *Petrology and alteration in the core of the Bear Lodge Tertiary intrusive complex, Bear Lodge Mountains, Crook County, Wyoming*, unpublished M.S. thesis, University of North Dakota

This map has not been reviewed for conformity with the editorial standards of the Geological Survey of Wyoming