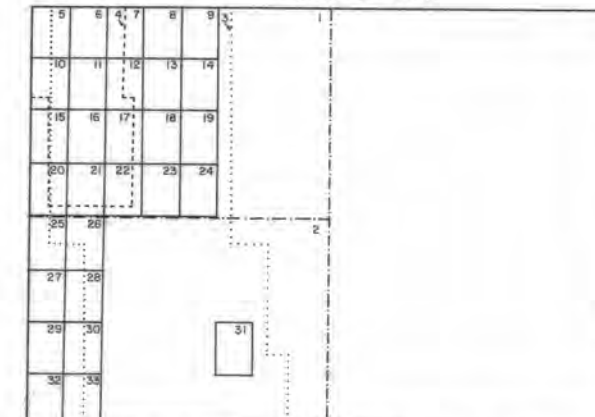


EXPLANATION

Baked or fused rock (also known as clinker or scoria). Rock baked or melted by naturally-ignited coal beds. Used as aggregate and ornamental stone.

SOURCES OF DATA



1. Kent, B.H. and Berlage, L.J., 1980, Geologic map of the Reclus 1° x 1/2° Quadrangle, Campbell and Crook Counties, Wyoming; U.S. Geological Survey Coal Investigations Map C-81-D, scale 1:100,000.
2. Reheis, M.C., 1982, Geologic map of the Gillette 30' x 60' Quadrangle, Campbell and Crook Counties, Wyoming; U.S. Geological Survey Miscellaneous Field Studies Map MF-1387, scale 1:100,000.
3. Schell, E.M. and Mawol, G.D., 1972, Reconnaissance map showing some coal and clinker beds in the Fort Union and Wasatch Formations in the eastern Powder River Basin, Campbell and Converse Counties, Wyoming; U.S. Geological Survey Open-file Report 72-329, scale 1:63,360.
4. Olive, W.W., 1957, The Spotted Horse coal field, Sheridan and Campbell Counties, Wyoming; U.S. Geological Survey Bulletin 1050, 83p.
5. Intrasearch, Inc., 1978, Coal resource occurrence and coal development potential maps of the Black Draw Quadrangle, Campbell County, Wyoming; U.S. Geological Survey Open-file Report 78-65, scale 1:24,000.
6. Intrasearch, Inc., 1978, Coal resource occurrence and coal development potential maps of the Dead Horse Lake Quadrangle, Campbell County, Wyoming; U.S. Geological Survey Open-file Report 78-66, scale 1:24,000.
7. Intrasearch, Inc., 1978, Coal resource occurrence and coal development potential maps of the Corral Creek Quadrangle, Campbell County, Wyoming; U.S. Geological Survey Open-file Report 78-67, scale 1:24,000.
8. Intrasearch, Inc., 1978, Coal resource occurrence and coal development potential maps of the Homestead Draw Quadrangle, Campbell County, Wyoming; U.S. Geological Survey Open-file Report 78-829, scale 1:24,000.
9. Intrasearch, Inc., 1978, Coal resource occurrence and coal development potential maps of the Rocky Butte Quadrangle, Campbell County, Wyoming; U.S. Geological Survey Open-file Report 78-830, scale 1:24,000.
10. Intrasearch, Inc., 1978, Coal resource occurrence and coal development potential maps of the Kline Draw Quadrangle, Campbell County, Wyoming; U.S. Geological Survey Open-file Report 78-831, scale 1:24,000.
11. Intrasearch, Inc., 1978, Coal resource occurrence and coal development potential maps of the Reservoir Creek Quadrangle, Campbell County, Wyoming; U.S. Geological Survey Open-file Report 78-832, scale 1:24,000.
12. Intrasearch, Inc., 1978, Coal resource occurrence and coal development potential maps of the Homestead Draw Southwest Quadrangle, Campbell County, Wyoming; U.S. Geological Survey Open-file Report 78-855, scale 1:24,000.
13. Intrasearch, Inc., 1979, Coal resource occurrence and coal development potential maps of the White Tail Butte Quadrangle, Campbell County, Wyoming; U.S. Geological Survey Open-file Report 79-21, scale 1:24,000.
14. Intrasearch, Inc., 1979, Coal resource occurrence and coal development potential maps of the Rocky Butte Southwest Quadrangle, Campbell County, Wyoming; U.S. Geological Survey Open-file Report 79-22, scale 1:24,000.
15. Intrasearch, Inc., 1979, Coal resource occurrence and coal development potential maps of the Lorey Draw Quadrangle, Campbell County, Wyoming; U.S. Geological Survey Open-file Report 79-23, scale 1:24,000.
16. Intrasearch, Inc., 1979, Coal resource occurrence and coal development potential maps of the Spotted Horse Quadrangle, Campbell County, Wyoming; U.S. Geological Survey Open-file Report 79-24, scale 1:24,000.
17. Intrasearch, Inc., 1979, Coal resource occurrence and coal development potential maps of the Reclus Quadrangle, Campbell County, Wyoming; U.S. Geological Survey Open-file Report 79-25, scale 1:24,000.
18. Intrasearch, Inc., 1979, Coal resource occurrence and coal development potential maps of the Pitch Draw Quadrangle, Campbell County, Wyoming; U.S. Geological Survey Open-file Report 79-26, scale 1:24,000.
19. Intrasearch, Inc., 1979, Coal resource occurrence and coal development potential maps of the Oliver Draw Quadrangle, Campbell County, Wyoming; U.S. Geological Survey Open-file Report 79-27, scale 1:24,000.
20. Intrasearch, Inc., 1979, Coal resource occurrence and coal development potential maps of the Croton Quadrangle, Campbell County, Wyoming; U.S. Geological Survey Open-file Report 79-28, scale 1:24,000.
21. Intrasearch, Inc., 1979, Coal resource occurrence and coal development potential maps of the Truman Draw Quadrangle, Campbell County, Wyoming; U.S. Geological Survey Open-file Report 79-29, scale 1:24,000.
22. Intrasearch, Inc., 1979, Coal resource occurrence and coal development potential maps of the Wildcat Quadrangle, Campbell County, Wyoming; U.S. Geological Survey Open-file Report 79-30, scale 1:24,000.
23. Intrasearch, Inc., 1979, Coal resource occurrence and coal development potential maps of the Calf Creek Quadrangle, Campbell County, Wyoming; U.S. Geological Survey Open-file Report 79-31, scale 1:24,000.
24. Intrasearch, Inc., 1979, Coal resource occurrence and coal development potential maps of the Weston Southwest Quadrangle, Campbell County, Wyoming; U.S. Geological Survey Open-file Report 79-32, scale 1:24,000.
25. Intrasearch, Inc., 1979, Coal resource occurrence and coal development potential maps of the Echsta Quadrangle, Campbell County, Wyoming; U.S. Geological Survey Open-file Report 79-33, scale 1:24,000.
26. Intrasearch, Inc., 1979, Coal resource occurrence and coal development potential maps of the Twentymile Butte Quadrangle, Campbell County, Wyoming; U.S. Geological Survey Open-file Report 79-34, scale 1:24,000.
27. Intrasearch, Inc., 1979, Coal resource occurrence and coal development potential maps of the Carr Draw Quadrangle, Campbell County, Wyoming; U.S. Geological Survey Open-file Report 79-38, scale 1:24,000.
28. Intrasearch, Inc., 1979, Coal resource occurrence and coal development potential maps of the Jeffers Draw Quadrangle, Campbell County, Wyoming; U.S. Geological Survey Open-file Report 79-39, scale 1:24,000.
29. Intrasearch, Inc., 1979, Coal resource occurrence and coal development potential maps of the Morgan Draw Quadrangle, Campbell County, Wyoming; U.S. Geological Survey Open-file Report 79-44, scale 1:24,000.
30. Intrasearch, Inc., 1979, Coal resource occurrence and coal development potential maps of the Scott Dam Quadrangle, Campbell County, Wyoming; U.S. Geological Survey Open-file Report 79-45, scale 1:24,000.
31. Intrasearch, Inc., 1979, Coal resource occurrence and coal development potential maps of the Coyote Draw Quadrangle, Campbell County, Wyoming; U.S. Geological Survey Open-file Report 79-49, scale 1:24,000.
32. Intrasearch, Inc., 1979, Coal resource occurrence and coal development potential maps of the Bogie Draw Quadrangle, Campbell County, Wyoming; U.S. Geological Survey Open-file Report 79-50, scale 1:24,000.
33. Intrasearch, Inc., 1979, Coal resource occurrence and coal development potential maps of the Double Tanks Quadrangle, Campbell County, Wyoming; U.S. Geological Survey Open-file Report 79-51, scale 1:24,000.



Baked and Fused Rock (Clinker) within the Gillette  
 1° by 2° Topographic Map Area  
 by  
 John E. Meyer, 1985

This map has not been reviewed for conformity with the editorial standards of the Geological Survey of Wyoming.